

DYMO Reinstalling LabelWriter on Windows Instructions

[Home](#) » [DYMO](#) » DYMO Reinstalling LabelWriter on Windows Instructions 



Reinstalling LabelWriter on Windows Instructions Manual

Contents

- [1 Reinstalling LabelWriter on Windows](#)
- [2 Documents / Resources](#)
- [3 Related Posts](#)

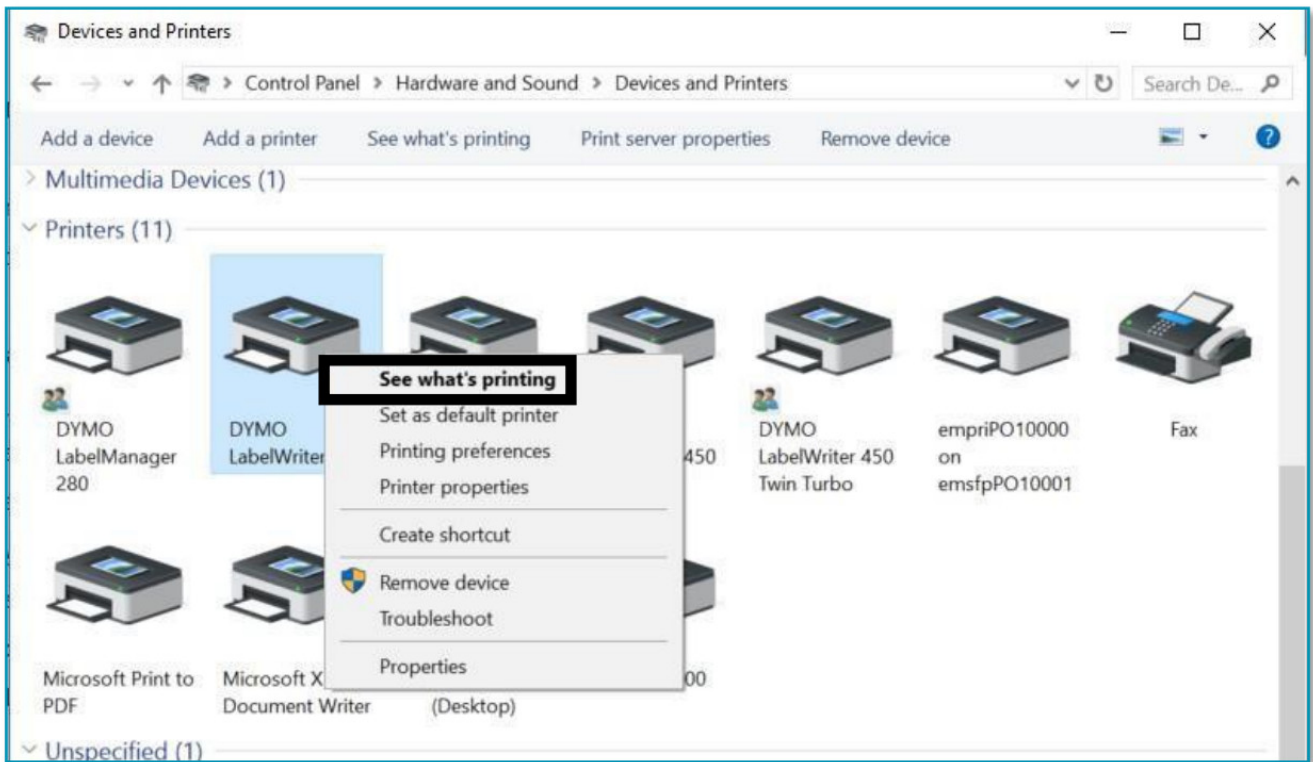
Reinstalling LabelWriter on Windows

This guide is a solution for the following issues:

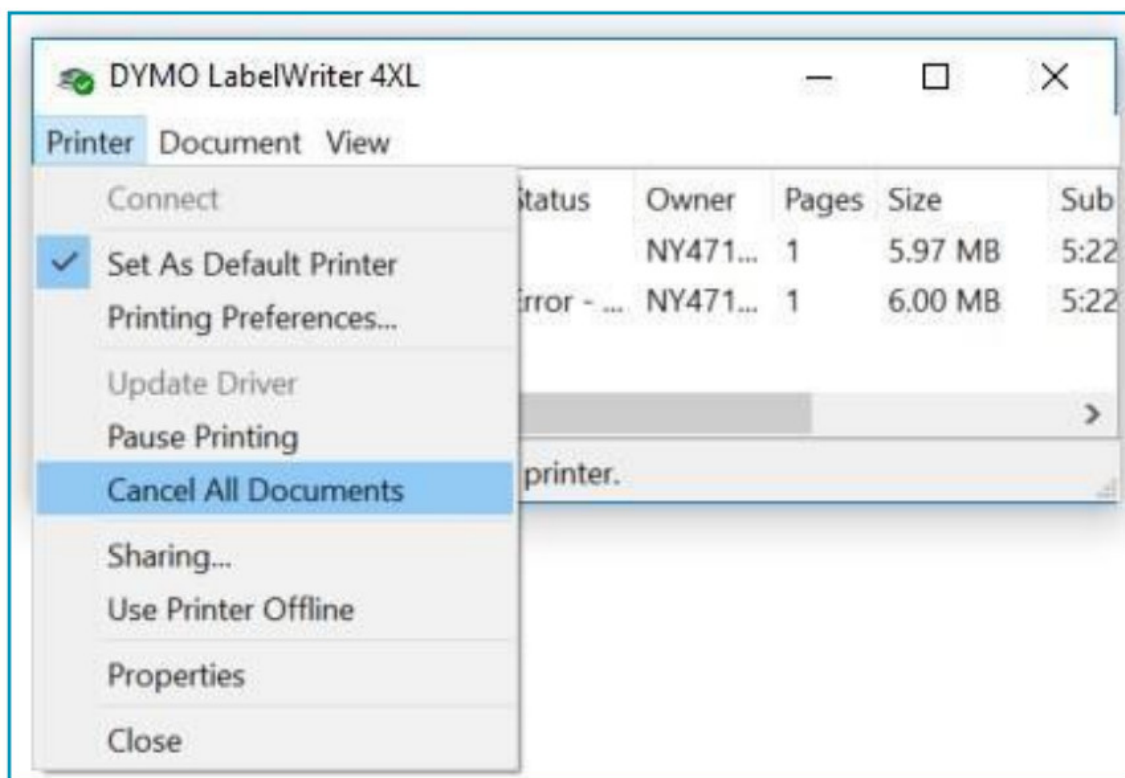
- Error – Printing' message.
- LabelWriter not printing.
- 'Error – Out of Paper' message. – Other driver-related issues.


Please follow the steps below to reinstall your LabelWriter:

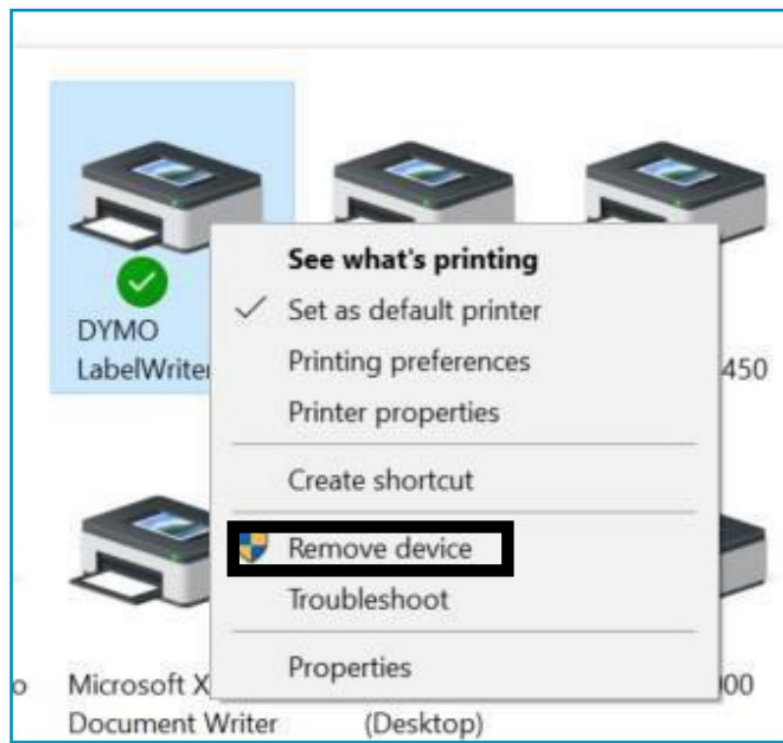
1. Remove both the power and the USB cable from the back of your LabelWriter.
2. Remove the labels from the feed path (use the black release lever located on the left-hand side).
3. Go to Control Panel\Hardware and Sound\Devices and Printers.



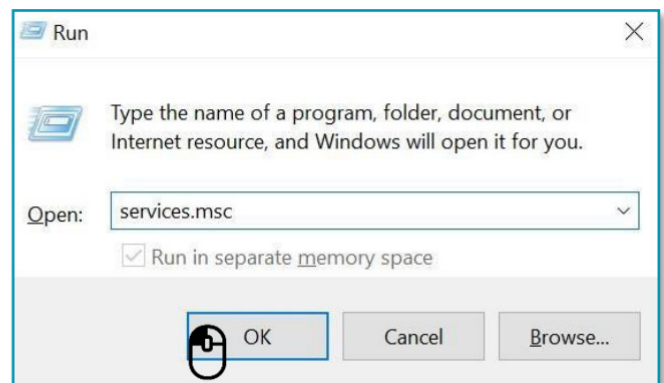
4. Right-click on LabelWriter and select See what's printing.
5. If there is anything in the queue cancel it by selecting 'Cancel All Documents' in the 'Printer' tab or right-click on each document and select 'Cancel'.




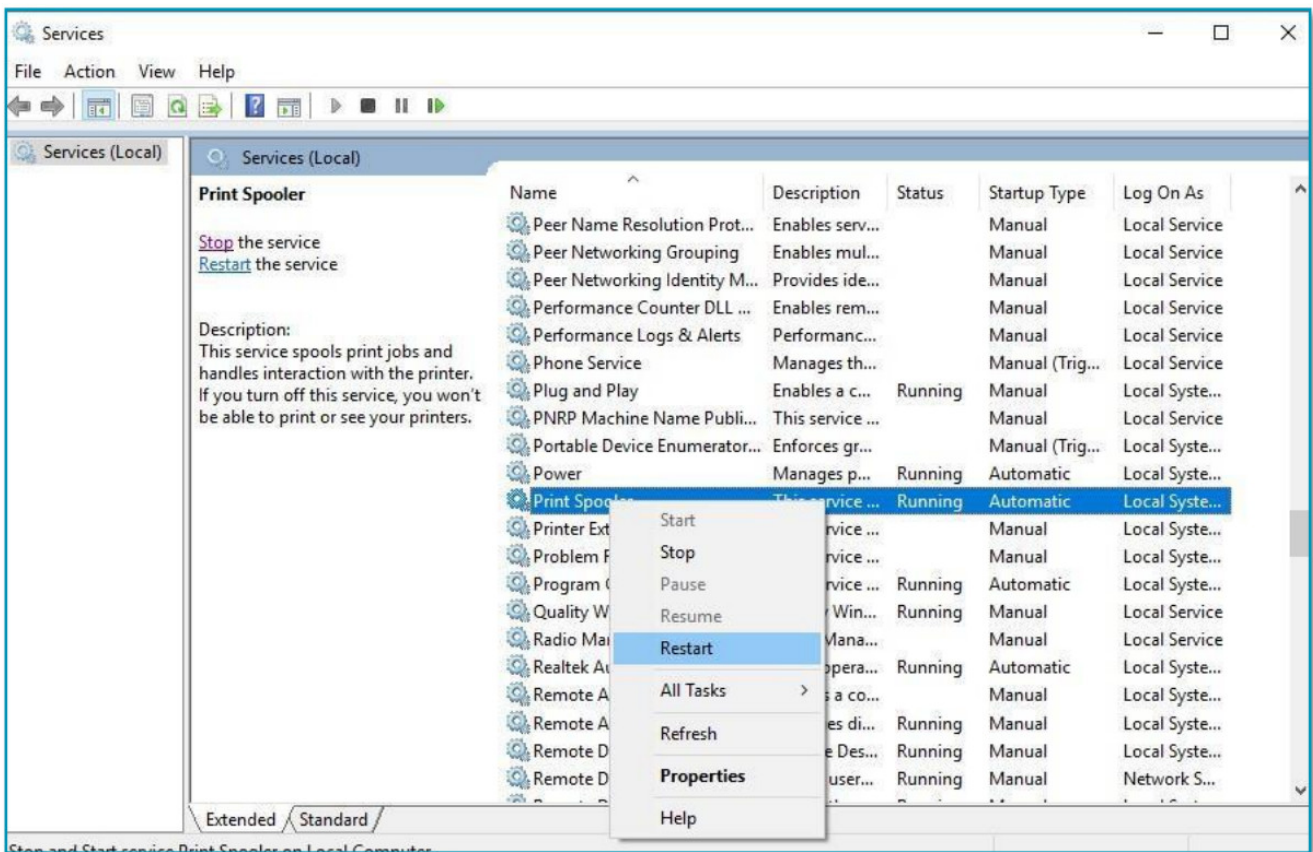
6.  Remove LabelWriter from Devices and Printers (Right-click on the LabelWriter listed under the printer heading and select Remove Device). Administrator rights are required.



7. Press the Windows key + R and type in services.MSC and press Enter or type 'Services' in Windows search.

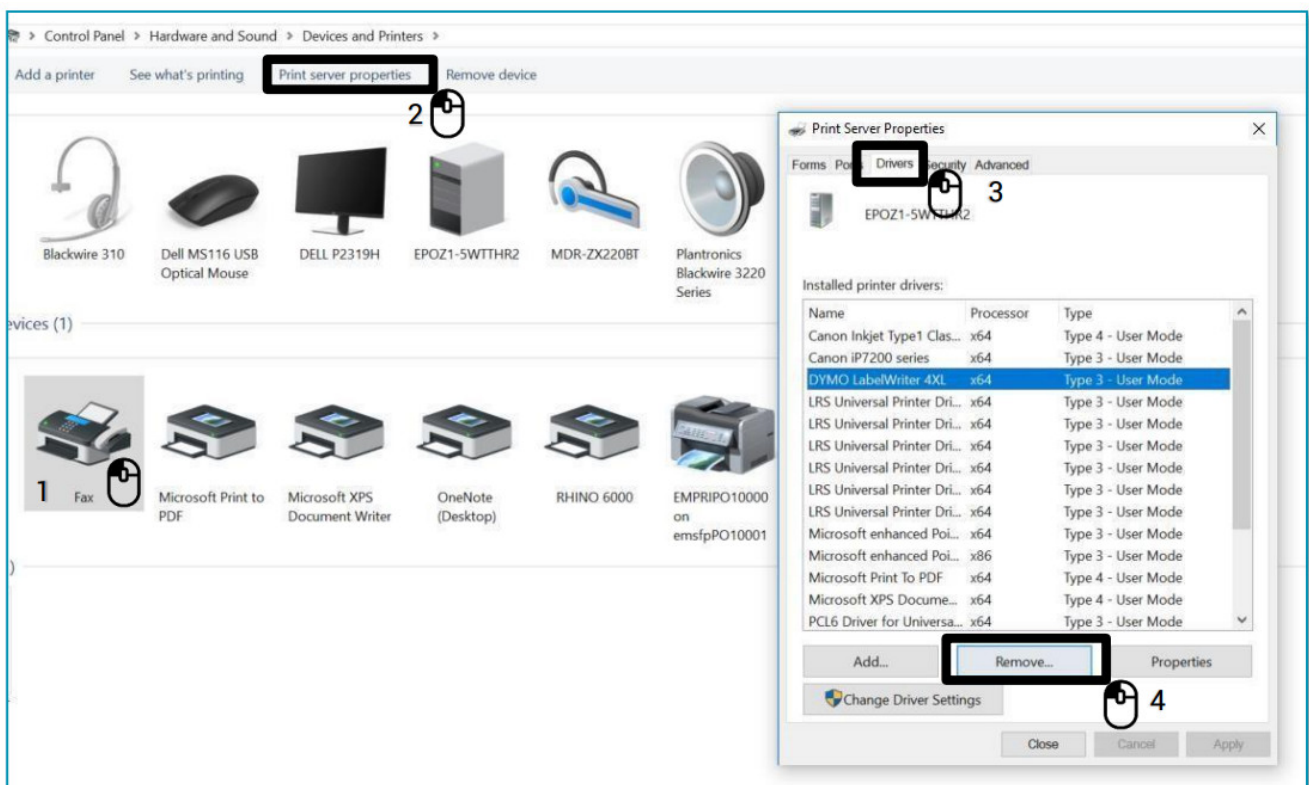


8.  Go to Services right-click on Print Spooler and select Restart.



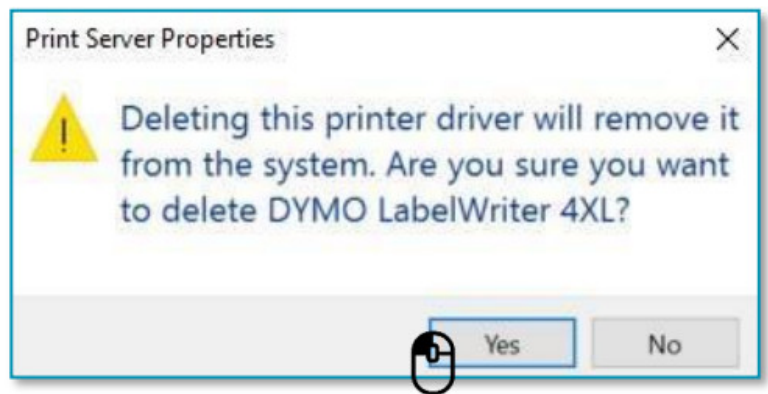
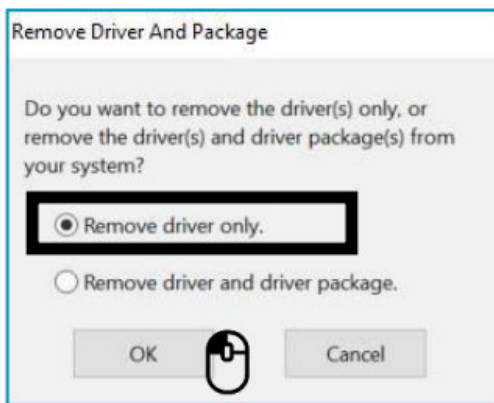
9. Go to Control Panel\Hardware and Sound\Devices and Printers Left-Click once on any printer on the list and select Print server properties.

10. Go to Drivers Tab and select LabelWriter. Remove it using the Remove button at the bottom of the window.

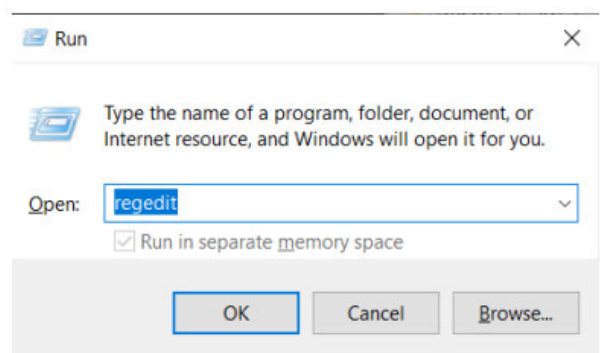


11. Select 'Remove driver only.' in the pop-up window and select 'OK'. Confirm deleting the drivers by selecting 'Yes'.

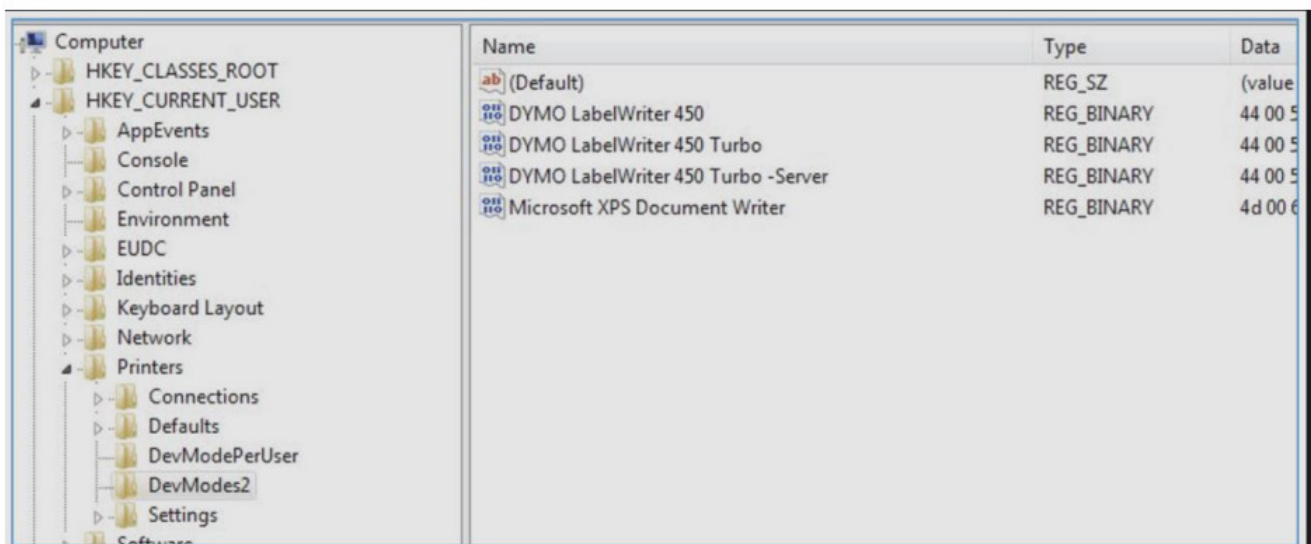
Important: The next steps will involve removing Windows registry keys. Please be extra careful with it as removing an incorrect registry key might damage your operating system. If you don't feel comfortable with carrying out these steps, please don't do them.



12. Press the Windows key + R and type in 'Regedit'.

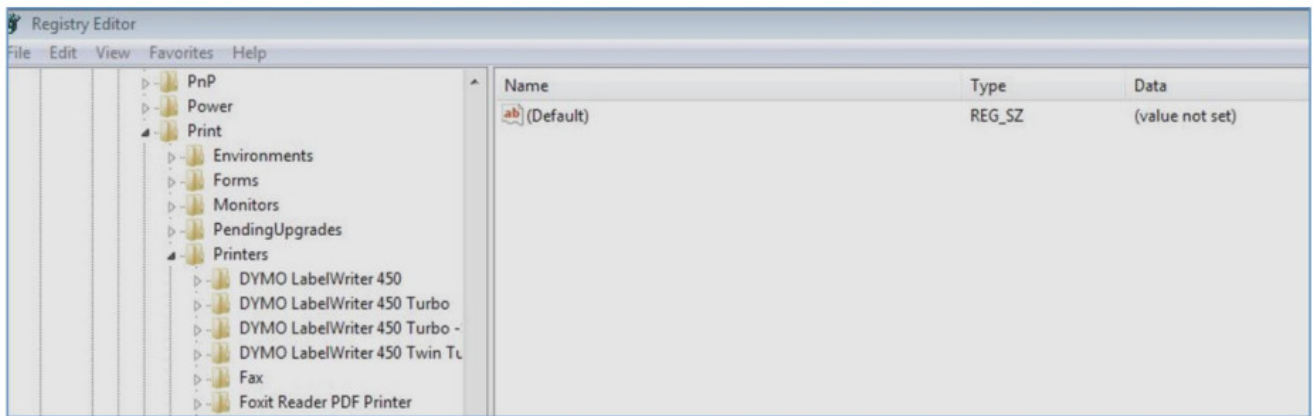


13. Go to HKEY_CURRENT_USER\Printers, in this folder will be 4 to 6 folders (Connections, Defaults, DevModePerUser, etc.) Do not delete these folders. Instead, left-click on each of these folders, and some of them may contain entries for the DYMO LabelWriter on the right-hand side:



14. Highlight the DYMO LabelWriter entries on the right-hand side, right-click, and select delete. Only delete the DYMO LabelWriters from this list. It will confirm that you want to delete these items, select Yes, and they should disappear. Once you've checked the remaining folders for DYMO LabelWriters move to the next registry location below.

15. Go to HKEY_LOCAL_MACHINE\SYSTEM\CurrentControlSet\Control\Print\Printers, under the Printers folder, are folders of different printer models installed:



16. Right-click on each DYMO LabelWriter folder on the left-hand side, and select delete, it will confirm that you want to delete these items, select yes. Delete the DYMO LabelWriter folders until no more DYMO LabelWriters remain on this list.
17. Re-insert the labels into the feed path. Please see the guide:
How to load a label roll in a DYMO LabelWriter.
18. Re-attach the USB cable (ensure that it is connected to the computer).
19. LabelWriter should be ready to use.



Documents / Resources

	<p>DYMO Reinstalling LabelWriter on Windows [pdf] Instructions Reinstalling LabelWriter on Windows, LabelWriter on Windows, Reinstalling on Windows, on Windows</p>
--	---