



Dwason MC227 LED Wireless Mouse User Manual

[Home](#) » [Dwason](#) » Dwason MC227 LED Wireless Mouse User Manual 

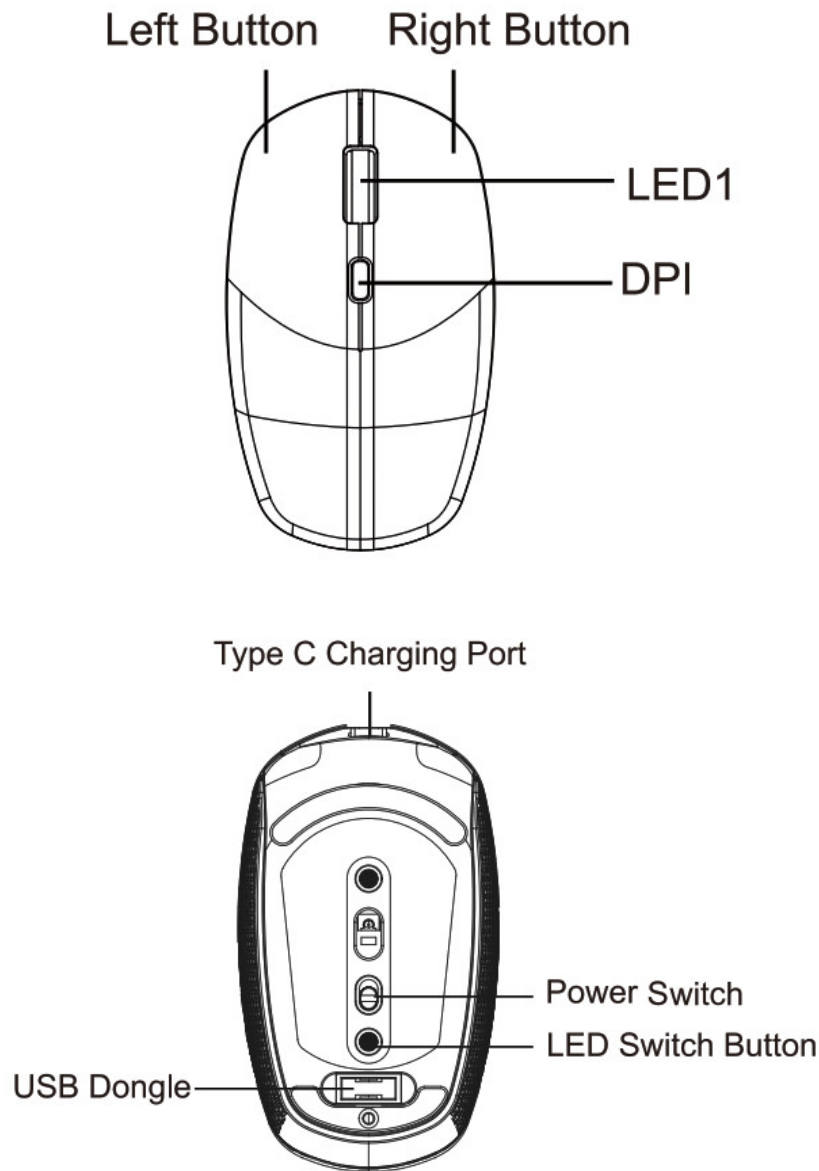
User Manual
Model: MC227

Contents

- [1 Package includes](#)
- [2 Product Specifications](#)
- [3 2.4G Wireless Mode Connection](#)
- [4 LED Indicator Light](#)
- [5 Note](#)
- [6 Documents / Resources](#)
- [7 Related Posts](#)

Package includes

- LED Wireless Mouse
- Product Manual
- Type-c Charging Cable
- 2.4G Receiver
- USB-C Adapter



LED Indicator Light:

Charging: When charging, LED 1 red light will stay on and will turn off after fully charged Low Power Indicator. LED1 red light flashes slowly

Switch backlight effect buttons:

Click the LED Switch Button to switch 15 different lighting effects, Turn off the backlight Please press the backlight switch first, then press and hold the backlight switch for 3 seconds Turn on the backlight: Please press and hold the backlight switch for 3 seconds.

Product Specifications

DPI: 1000/1500/2000

Weight: 70g

Battery Capacity: 776mAh

Working current (turn on backlight): 15mA

Working time (turn on backlight): 50h

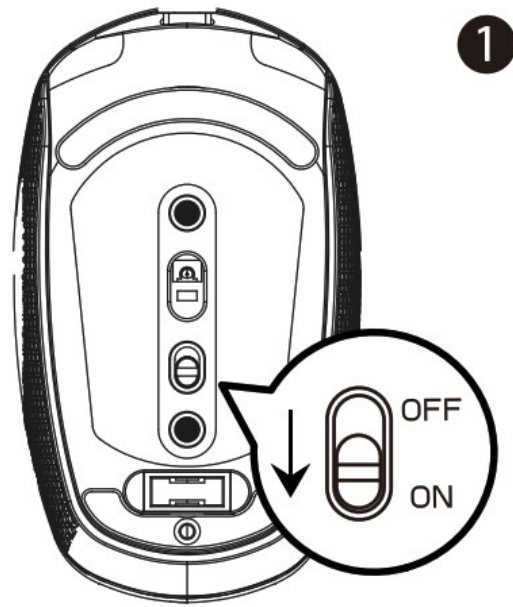
Working current (turn off backlight): 3mA

Working time (turn off backlight):160h

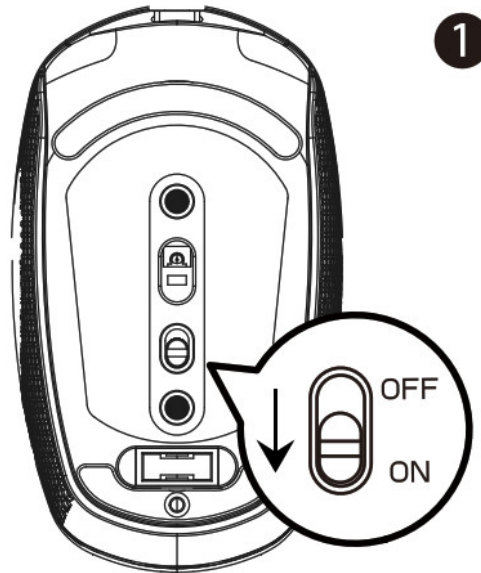
Range: 10m

Sleep Mode: Enters into sleep mode after 1.5 minutes of inactivity Compatible Systems: Windows XP, Windows 7, Windows 10, Mac OS, Android, iPad OS, IOS

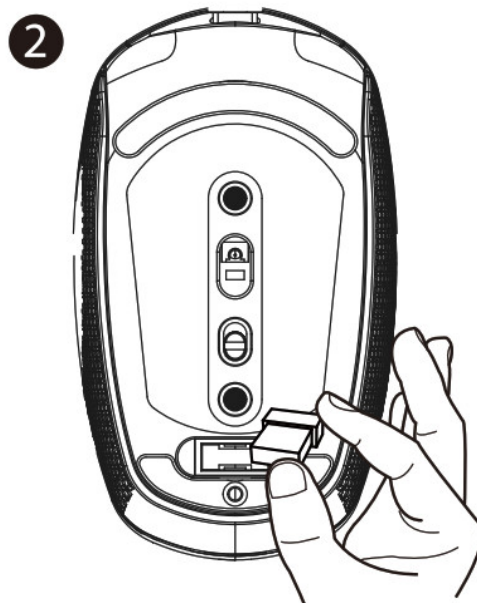
2.4G Wireless Mode Connection



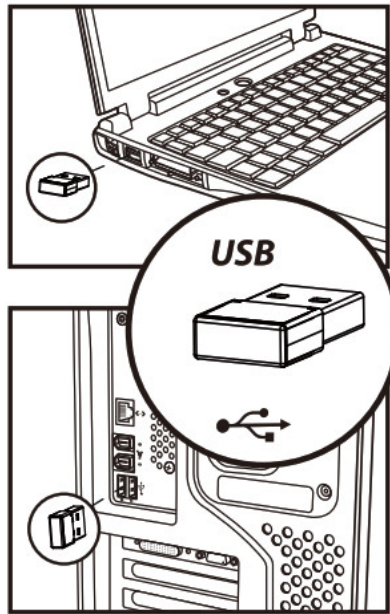
1. Turn on the power switch to °OW.



2. Take out the USB dongle and insert it into your computer.



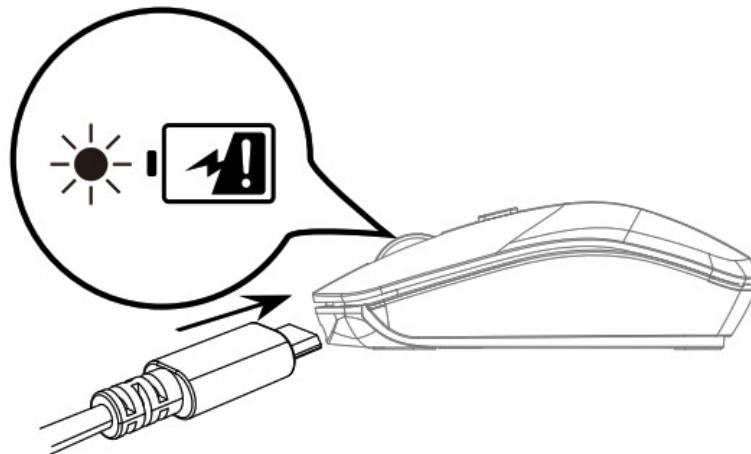
3. Insert the computer USB port.



LED Indicator Light

Charging: LED1 red light keeps on, and turns off when fully charged.

Warm Reminder:



1. The mouse will enter into sleep mode after 1.5 minutes of inactivity, the mouse backlight will turn off automatically, you can click any key to wake up
2. When the mouse backlight is dimmed or automatically turned off, it indicates that the mouse is in a low battery state, please charge the mouse in time.

Note

The multimedia keys are for Win 8 and Win 10, for other systems, there may be no function for some combined keys. This equipment has been tested and found to comply with the limits for a Class B digital device, pursuant to part 15 of the FCC Rules. These limits are designed to provide reasonable protection against harmful interference in a residential installation. This equipment generates uses and can radiate radio frequency energy and, if not installed and used in accordance with the instructions, may cause harmful interference to radio communications. However, there is no guarantee that interference will not occur in a particular installation. If this equipment does cause harmful interference to radio or television reception, which can be determined by turning the equipment off

and on, the user is encouraged to try to correct the interference by one or more of the following measures:

- Reorient or relocate the receiving antenna.
- Increase the separation between the equipment and receiver.
- Connect the equipment into an outlet on a circuit different from that to which the receiver is connected.
- Consult the dealer or an experienced radio/TV technician for help

Changes or modifications not expressly approved by the party responsible for compliance could void the user's authority to operate the equipment.

This device complies with Part 15 of the FCC Rules. Operation is subject to the following two conditions:


(1)This device may not cause harmful interference

(2)This device must accept any interference received, including interference that may cause undesired operation.

The device has been evaluated to meet general RF exposure requirements.

The device can be used in portable exposure conditions without restriction.

Documents / Resources

	Dwason MC227 LED Wireless Mouse [pdf] User Manual MC227, 2AYJU-MC227, 2AYJUMC227, MC227 LED Wireless Mouse, LED Wireless Mouse, Mo use
---	--