

# DWARF CONNECTION DC-X.LINK-XS3 Wireless Video Receiver User Guide

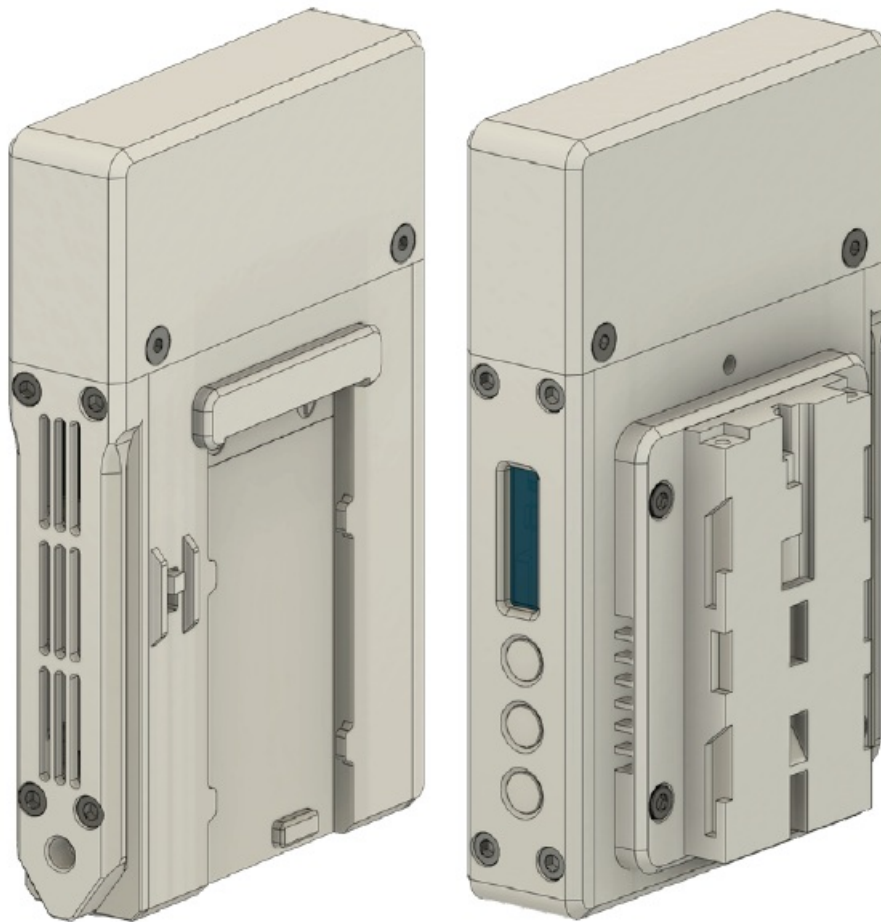
[Home](#) » [DWARF CONNECTION](#) » DWARF CONNECTION DC-X.LINK-XS3 Wireless Video Receiver User Guide 

## Contents

- [1 DWARF CONNECTION DC-X.LINK-XS3 Wireless Video Receiver](#)
- [2 What's in the Box?](#)
- [3 Getting Ready](#)
- [4 Establishing a Connection](#)
- [5 Documents / Resources](#)
- [6 Related Posts](#)



**DWARF CONNECTION DC-X.LINK-XS3 Wireless Video Receiver**



## What's in the Box?

- 1x X.LINK-XS3 wireless video receiver
- 1x NPF battery plate
- 1x Spacer for NPF battery plate
- 1x Mounting piece for NPF battery plate
- 1x Power cable 4-pin to D-Tap
- 4x M3x6 socket head screws
- 4x M3x25 flat head screws

## Getting Ready

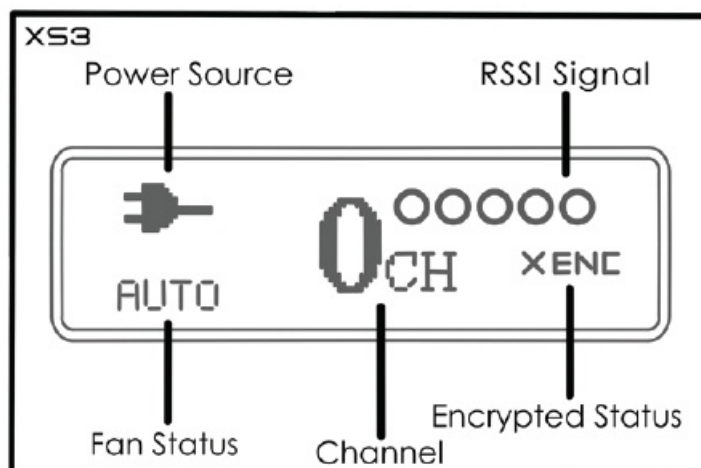
1. Power your devices. Find details about proper powering options in the product manual provided on our website.
2. Connect the receiver to the monitoring, recording or distribution device of your choice.

## Establishing a Connection

Use the power switch to turn on your receiver. Make sure that your devices are set to the same channel. (see "Choosing a Channel") It takes between 10-30 seconds for the transmitter to connect to the receiver. During this brief period, the receiver's video output displays "Waiting for connection". Once the transmitter recognizes a video input, the video format will be displayed on the OLED display.

## RSS Indicator

The RSSI (Wireless Received Signal Strength Indicator) is displayed right next to the channel information on the OLED display. Five dots show the signal strength:



Status	Description
0-1	Radio signal strength is weak and artefacts are visible in the video signal
2-3	Radio signal strength is normal and video quality is good
4-5	Radio signal strength is very strong and video quality is very good

### Choosing a Channel

To choose a channel on the transmitter/receiver press MENU and select with the + and – button. Press MENU to confirm.

### Master Channel Selection

All receivers on the same channel react to channel changes of the transmitter and follow automatically.

### Multi Brand Connectivity

Your receiver is equipped with the Multi-Brand Connectivity Feature that makes it compatible with most common non-DFS WHDI wireless video transmitters on the market.

Choose a channel from different frequency sets(marked with letters, e.g. A0) using the + and –buttons and confirm with MENU. Channels used by DwarfConnection show no letter (0-9). For more detailed information, read the full product manual provided on our website.

### Encryption Mode

To activate encryption mode, press and hold the Menu button on your device to enter the encryption menu. Use + or – to check either ON or OFF and confirm with MENU. The main menu will show either X ENC or ✓ ENC to indicate whether encryption is on or off.

To link your devices, set your transmitter and all the receivers to the same channel, then activate encryption on your transmitter.

All receivers will follow into encryption mode automatically. For more detailed information, read the product manual provided on our website.

## Fan Control & Cinema Mode

To switch the fan on your receiver on or off, use the MENU button to navigate to the fan menu and select the desired state by using+ or –✓ turns the fans on permanently. X turns the fans off.

AUTO selects cinema-mode, which triggers the fans using the record and stop signals of the camera. When recording is over the fan starts automatically.

## Country-specific Regulations

Observe country-specific rules that prohibit the use of wireless transmission under certain conditions!

### Caution

Switching off the fans may be required in some situations but doing this permanently is not recommended. Prolonged heat will affect the lifetime of your wireless equipment.

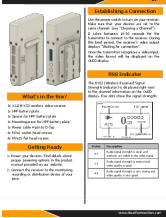
If the temperature of your device exceeds 75°C/165° F, turn on the fans immediately!

THERE IS NO AUTO SHUT-OFF!

Any damage caused by over-heating voids warranty.

[www.dwarfconnection.com](http://www.dwarfconnection.com)

## Documents / Resources

	<p><a href="#">DWARF CONNECTION DC-X.LINK-XS3 Wireless Video Receiver</a> [pdf] User Guide DC-X.LINK-XS3, Wireless Video Receiver, DC-X.LINK-XS3 Wireless Video Receiver</p>
---	--