

 **DUSTY
ROBOTICS**
FldTrack100
Laser
Tracker



DUSTY ROBOTICS FldTrack100 Laser Tracker Owner's Manual

[Home](#) » [DUSTY ROBOTICS](#) » DUSTY ROBOTICS FldTrack100 Laser Tracker Owner's Manual 

Contents

- [1 DUSTY ROBOTICS FldTrack100 Laser Tracker](#)
- [2 Product Usage Instructions](#)
- [3 CONNECT THE WIRES](#)
- [4 Compliance Statements](#)
- [5 FAQs](#)
- [6 Documents / Resources](#)
 - [6.1 References](#)



DUSTY ROBOTICS FldTrack100 Laser Tracker



Specifications

- Connectivity: USB, Ethernet
- Light Indicators: Red Blinking, Blue Blinking + Red Solid, Blue Blinking + Green Solid
- Compliance: FCC, IC
- Radiation Exposure Limits: FCC, IC RSS-102

Product Usage Instructions

Connecting the Wires

1. Connect the attached USB cable to the radio box.
2. Connect the ethernet cable to the radio box as well.

Setting Up Laser Tracker

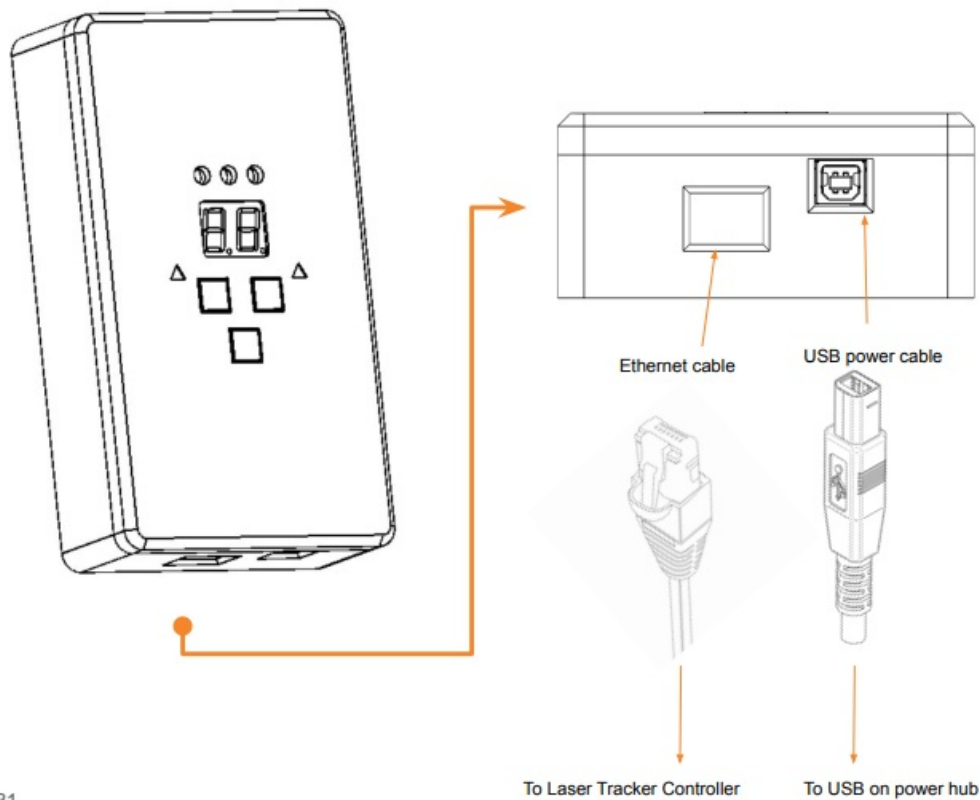
1. Connect the Laser Tracker Controller to the USB on the power hub.
2. Ensure the radio and FieldPrinter are set to the same channel as per the UI Guide on page 40.

Radio Channel Setup

1. Adjust the radio channel number to match that of the FieldPrinter.
2. Ensure the light indicators show a successful connection between devices.
3. Troubleshooting: If issues arise, change the channel in the tablet and then update the radio box channel accordingly.

CONNECT THE WIRES

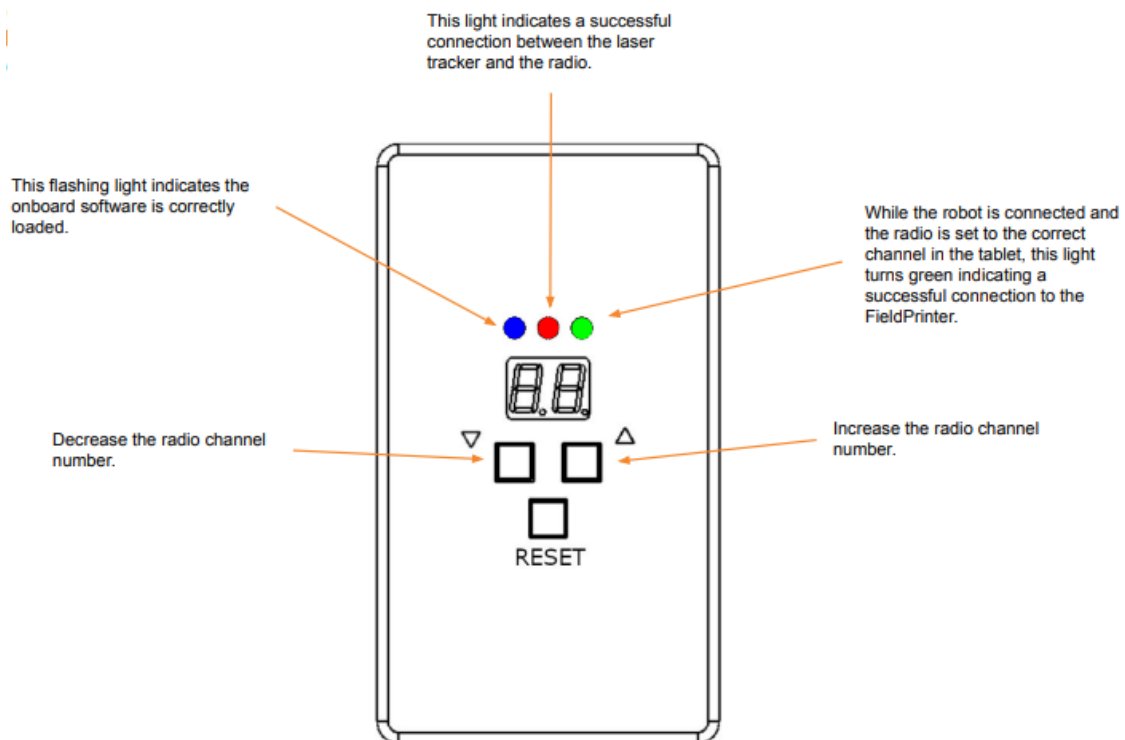
- Connect the attached USB cable and the other end of the ethernet cable to the bottom of the radio box indicated here.





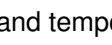
31

CONNECT THE RADIO TO THE CORRECT CHANNEL

- The FieldPrinter and radio need to be set to the same channel. See UI Guide on page 40 for instructions.
- If you experience any issues at this step, connect to the robot in the tablet and manually change the channel to any other number. You may then change the channel on this box to match that newly set channel.



Light Indicators:

-  Red Blinking — Initializing/Bootup
-  Blue Blinking + Red Solid — On but not connected to FieldPrinter or brief signal reduction (harmless and temporary)
-  Blue Blinking + Green Solid — On and connected to robot

Compliance Statements

FCC

- This equipment has been tested and found to comply with the limits for a Class A digital device, pursuant to Part 15 of the FCC Rules. These limits are designed to provide reasonable protection against harmful interference when the equipment is operated in a commercial environment. This equipment generates, uses and can radiate radio frequency energy and, if not installed and used in accordance with the instruction manual, may cause harmful interference to radio communications. Operation of this equipment in a residential area is likely to cause harmful interference in which case the user will be required to correct the interference at his own expense.
- This equipment complies with FCC radiation exposure limits set forth for an uncontrolled environment. End users must follow the specific operating instructions for satisfying RF exposure compliance. This transmitter must be at least 20 cm from the user and must not be co-located or operating in conjunction with any other antenna or transmitter.

IC

- This device contains license-exempt transmitter(s)/receiver(s) that comply with Innovation, Science and
- Economic Development Canada's license-exempt RSS(s). Operation is subject to the following two conditions:
 1. This device may not cause interference.
 2. This device must accept any interference, including interference that may cause undesired operation of the device.

Radiation Exposure Statement: This equipment complies with the IC RSS-102 radiation exposure limits set forth for an uncontrolled environment. This equipment should be installed and operated with a minimum distance of 20 cm between the radiator and your body.

FAQS

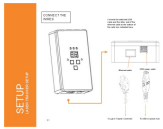
Q: What do the different light indicators mean?

A: Red Blinking indicates Initializing/Bootup, Blue Blinking + Red Solid means not connected to FieldPrinter or brief signal reduction, Blue Blinking + Green Solid means connected to robot.

Q: How do I troubleshoot connection issues between devices?

A: If facing connection problems, change the channel in the tablet and then update the radio box channel to match it for a successful connection.

Documents / Resources



[DUSTY ROBOTICS FldTrack100 Laser Tracker](#) [pdf] Owner's Manual
FldTrack100 Laser Tracker, FldTrack100, Laser Tracker, Tracker

References

- [User Manual](#)

Manuals+. [Privacy Policy](#)

This website is an independent publication and is neither affiliated with nor endorsed by any of the trademark owners. The "Bluetooth®" word mark and logos are registered trademarks owned by Bluetooth SIG, Inc. The "Wi-Fi®" word mark and logos are registered trademarks owned by the Wi-Fi Alliance. Any use of these marks on this website does not imply any affiliation with or endorsement.