



Dustcontrol Tromb Twin 400 Extractor User Manual

[Home](#) » [Dustcontrol](#) » Dustcontrol Tromb Twin 400 Extractor User Manual 

Contents

- 1 [Dustcontrol Tromb Twin 400 Extractor](#)
- 2 [Safety instructions](#)
- 3 [Functional description](#)
- 4 [Technical data](#)
- 5 [Operation](#)
- 6 [Service/Maintenance](#)
- 7 [Warranty](#)
- 8 [Troubleshooting](#)
- 9 [EC Declaration of Conformity](#)
- 10 [Documents / Resources](#)
 - 10.1 [References](#)
- 11 [Related Posts](#)



Dustcontrol Tromb Twin 400 Extractor



Tromb Twin

a/c/L

Translation of the Original Instructions

Copyright © 2021 Dustcontrol

Read the instruction manual before using the machine.

Dustcontrol reserves the right to change specifications without notice and is under no obligation to alter previously delivered products. Dustcontrol is not responsible for errors or omissions in this user instruction.

Manufactured by

Sold by

- Dustcontrol AB
- Box 3088, Kumla Gårdsväg 14 SE-145 03 Norsborg
- **Tel:** +46 8 531 940 00
- support@dustcontrol.se
- www.dustcontrol.com

Safety instructions

Read the following safety instructions before starting the machine. Save the User Guide for future reference. Failure to comply with the safety instructions voids the warranty and may result in personal injury and damage to the product. Dustcontrol is not responsible for damage to the equipment caused by improper installation or

improper operation of the equipment.

Warning

This machine is intended for professional use only.

Only use accessories and replacement parts included in the Dustcontrol product line.

WARNING

Use the machine for its intended purpose. Follow the instructions for the material to be extracted.

WARNING

This machine is only intended for extraction of dry material.

WARNING

When using electrical devices, basic safety instructions must be followed to reduce the risk of fire, electric shock or personal injury.

WARNING

If incorrect or non-OEM parts are used (especially filters, hoses and plastic bags), the machine can leak hazardous dust which may result in personal injury.

Environmental protection

- Packaging materials can be recycled. Do not dispose of the packaging in household waste. Instead it should be returned for recycling. Discarded units contain recyclable materials that should be recycled. Batteries, oil and similar items must not get into the environment. Dispose of scrapped units in an appropriate recycling system.
- Discarded units contain recyclable material that should be recycled. Batteries, oil and similar substances must not be released into the environment. Hand over scrapped units to a suitable recycling system.
- Discarded filters contain recyclable material that should be recycled. Transfer used filters to a suitable recycling system.



For more information, please contact your nearest recycling center.

Work area environment

Do not expose the machine to moisture. Do not use it in damp or wet areas or close to flammable liquids or gases.

CAUTION

This machine must only be used and stored in a dry environment.

CAUTION

Do not rinse the machine with water.

Overload

Never let the machine work fully throttled, as this poses a risk of overheating.

Bodily injuries

CAUTION

Never try to change electrical connections yourself. An error can be fatal!

Never allow the extraction point to make contact with any part of the body. The strong negative pressure can damage blood vessels in the skin.

WARNING

When installing, handling, and transporting the machine, protective gloves must be worn to prevent personal injury from sharp edges.

Power cord

- Never pull the machine by the power cord. Keep the power cord away from heat and sharp objects. Regularly inspect the power cord.
- If using an extension cord, it must be waterproof.
- The machine must not be used if the power cords or contacts are damaged.
- If the power cord is damaged, it must be replaced by Dustcontrol or a Dustcontrol authorized service center.

Important safety precaution

The machine must only be used if all filters are intact and fitted properly.

Care and maintenance

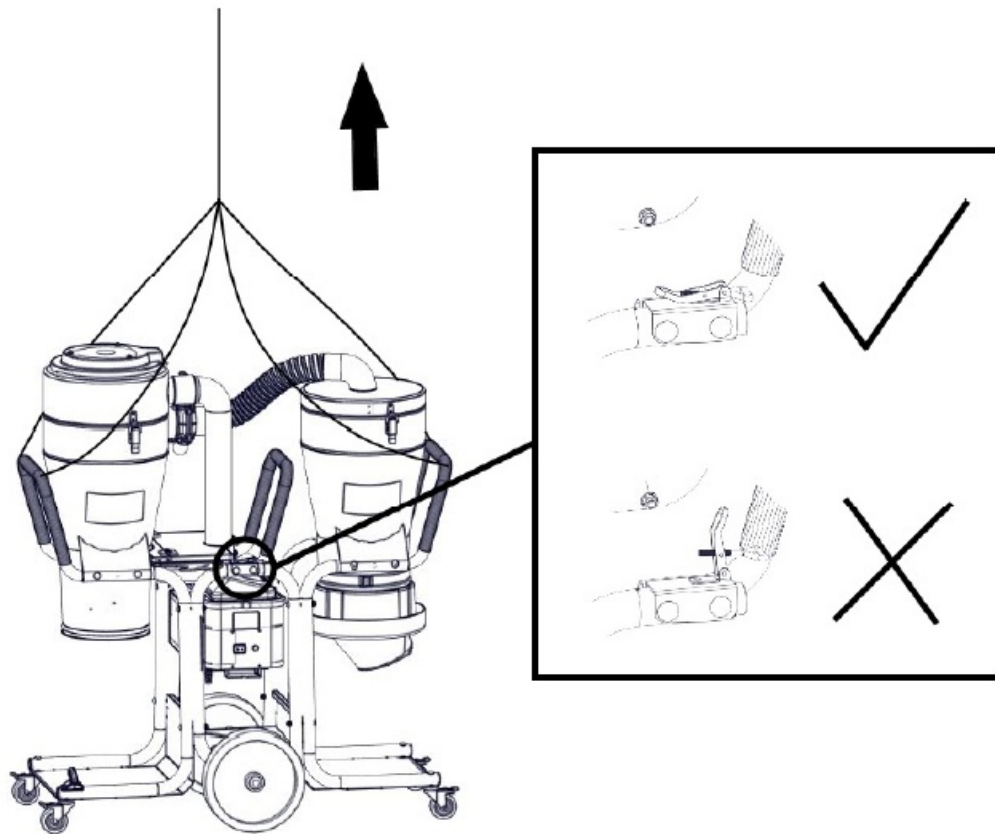
Keep the machine clean and free from dust deposits. Ensure that the suction hose and all seals are intact and undamaged. Keep the carrying handles dry and free from oil and grease.

Inspection

Regularly check the device for damage and wear. Any damage must be rectified by a Dustcontrol authorized service center.

Lifting

When lifting the machine, there is a risk of personal injury and damage to the machine or environment. Always define the risk area when lifting. The safest option is lifting the machine piece by piece. If the machine is lifted whole, ensure that the hooks are closed and secured during lifting. The machine's cyclone, the discharge system and filter must be emptied and cleaned before lifting.



Functional description

The dust extractor uses negative pressure (suction) to force the air through a suction cover/nozzle, hose system, pre-separator and dust separator. Coarse separation is carried out in the machine's cyclone, providing very effective separation of any coarse dust. Fine dust is separated in the unit's filter. Reverse-pulse filter cleaning ensures extended filter life. The machine is fitted with a HEPA filter.

- The dust extractor is durable and reliable. It is particularly well suited to the suction and removal of dry, harmful, non-combustible dust in filter class H.
- DC Tromb Twin is powered by two single-phase two-stage fans.
- DC Tromb Twin is equipped with a pre-separator, which collects coarser dust. Finer dust is collected in the second cyclone with filter.

The dust extractor has the following discharge options

- **c – Plastic bag:** The extracted and separated material is collected in a plastic bag that can be detached in one simple operation. The material can easily be recycled or disposed of.
- **a – Container:** A cylindrical container for collection of separated material.
- **L – Longopac:** The machine is equipped with a flexible bag system, in which the dust is collected in a closed system.

The pre-separator has the following discharge options

- **c – Plastic bag:** The extracted and separated material is collected in a plastic bag that can be detached in one simple operation. The material can easily be recycled or disposed of.
- **L – Longopac:** The machine is equipped with a flexible bag system, in which the dust is collected in a closed

system.

Technical data

DC Tromb Twin c		DC Tromb Twin L
HxWxL [mm]	1360 x 600 x 1280	1360 x 600 x 1280
Weight [kg]	76	80
Inlet [mm]	Ø 76	Ø 76
Hose length (Ø 50 mm) [m]	5	5
Collecting container [l]	20	longopac
Max. flow [m ³ /h]	365	365
Negative pressure, max. [kPa]	20	20
Power [W]	3000	3000
Fine filter, polyester, area [m ²]	1,85	1,85
Degree of separation, fine filter, EN 60335-2-69, Class M [%]	99,9	99,9
Filter area, HEPA filter [m ²]	2,2	2,2
Degree of separation, machine, EN 60335-2-69, Appendix A-A, Class H [%]	99,995	99,995
Filter classification, EN 1822-1	HEPA H13	HEPA H13
Sound level [dB(A)]	70	70

Sound pressure level at 1.6 m height and 1 m distance according to DIN EN ISO 3744 in free field measurement at maximum air flow.

Operation

Connection

Connect the machine to an electrical outlet with a voltage as per the machine's rating plate specifications.

Filter cleaning

The machine has a filter status indicator that lights up when the filter needs to be cleaned or replaced. The filters must be cleaned 1-2 times a day with continuous use and when the manometer needle is in the red field.

The filters should be cleaned when the manometer is in the red field.



1. Keep the machine switched on and close the throttle at the cyclone inlet. Reset the filter cleaner button.

2. Wait for 5-10 pulses.
3. Open the throttle at the cyclone inlet and reset the filter cleaner button.
4. Check that the pressure gauge indicates green or that the filter indication lamp is off. If not, repeat the procedure. If the gauge indicates red or the light is on even after repetition, the fine filter needs to be replaced. If it, despite the filter change, still indicates red, the vacuum valve must be checked.



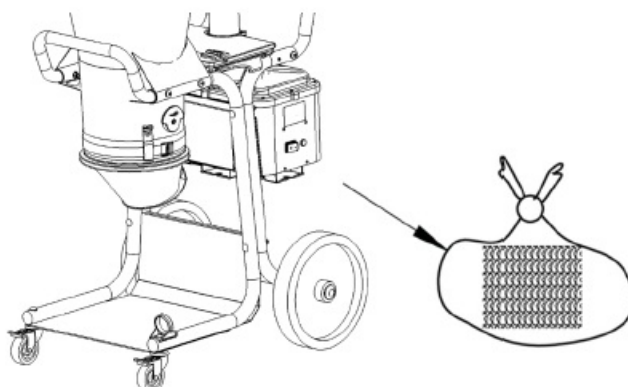
Emptying

a – Container

The container underneath the cyclone should be emptied when about 2/3 full.

c – Plastic bag

You must clean the filters before replacing the plastic bag. It should be replaced when the dust level is about 5 cm below the discharge flap.

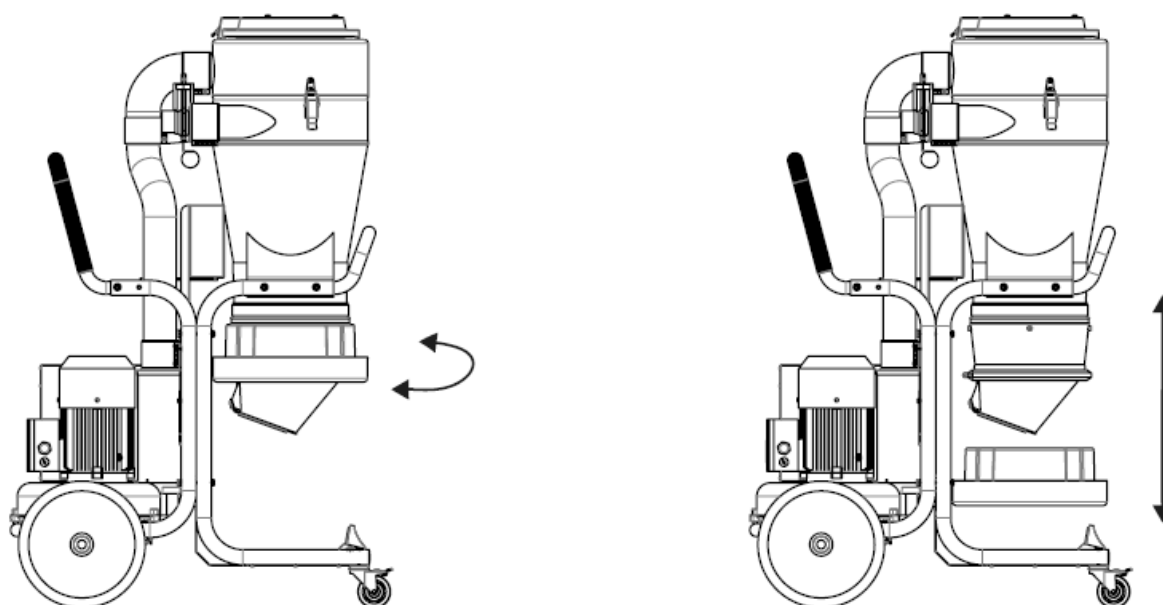


L – Longopac

Close the bag using the supplied cable ties when you believe that it has been filled to a suitable level. Another cable tie is used a little further up. This forms the bottom of the next bag. The filled bag is then cut off, and the machine is ready to be used again.

Changing the bag magazine

1. Rotate the holder to the position in which it can be pulled down.
2. Insert a bag magazine into the holder and refit it.
3. Cut the four tapes that hold the bag magazine together and pull the inner end of the bag upwards over the rubber strip. Then secure the bag with the strap. Pull the outer end over the holder, and tie a cable tie in place as a bottom closure.



Service/Maintenance

Cleaning

The machine must be switched off and unplugged before cleaning and maintenance.

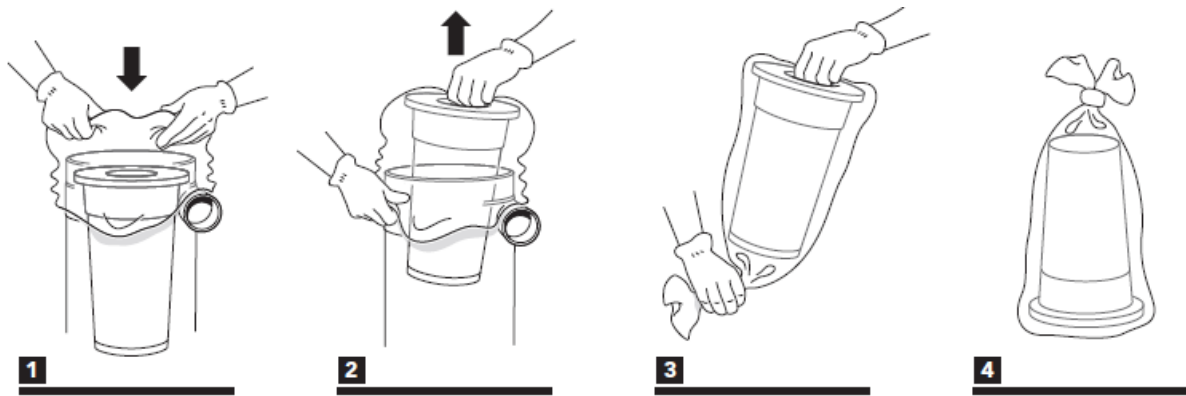
Filter replacement

The fine filter must be replaced at least once a year. Only original filters may be used. HEPA filters must be replaced after 300 hours.

WARNING

Filter replacement may only be performed by trained personnel. Use a protective mask and suitable equipment.

Release and lift off the upper part for free access to the filter. Lift the filter straight up. If appropriate, fit a plastic bag over the cyclone to prevent the dust in the filter from spreading. Check the gasket when replacing the filter. A worn gasket can allow hazardous dust to escape. Never use old gaskets or non-OEM parts. Place used filters in a plastic bag and seal the bag. See instructions below.

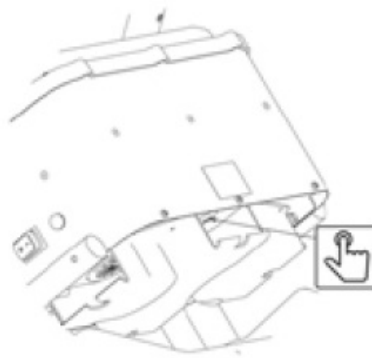


Motor

The typical service life of a fan motor's original brushes is 600-700 hours. The brush can be replaced. The service life of the second brush set is approx. 400 hours, while that of the third set is approx. 300 hours. After this time, the motor is considered worn out and should be replaced.

Overheating

If the machine is at risk of overheating (for example, as a result of powerful throttling), the temperature guard will trip and the machine will stop. The operator must then press the power switch to the OFF position, unplug from the mains and wait 3-5 minutes for the machine to cool down. Then reset the temperature guard by pressing the RESET button. Reconnect the power cord to the electrical outlet and restart the machine by pressing the power switch to the ON position.



Regular checks

Regularly check the power cord for damage.

The machine must be tested and inspected at least once a year due to its use with hazardous materials. Worn parts must be replaced. Never risk functionality and service life. Only use genuine parts.

Consumables

For spare parts, see the Dustcontrol website.

Warranty

The warranty period is two years and covers manufacturing defects. The warranty is valid on condition that the machine is used in the normal way and receives the required service. Normal wear and tear is not covered. Repairs must be carried out by Dustcontrol or personnel authorized by Dustcontrol. Otherwise, the warranty is void.

Troubleshooting


Problem	Cause	Action
Motor not running.	Power supply not connected.	Connect power supply.
Motor stops immediately after starting.	Incorrect fuse.	Replace with correct fuse.
Motor runs, but no suction.	Suction hose not connected.	Connect hose.

Problem	Cause	Action
Motor runs, but poor suction.	Suction hose perforated.	Replace hose.
	Blocked filter.	Clean or replace.
	Suction hose too long or narrow.	Replace hose.
	Hose partially blocked.	Reverse or clean hose.
	Top of machine poorly fitted.	Adjust fitting.
	Dust trapped in cyclone.	
	The pump is rotating in the wrong direction.	Remove top and clean cyclone. Let an electrician change the phase.
Motor stops during operation	Motor overheated	Make sure the machine is not throttled and wait for it to cool down (about 30 min)
Machine blows dust.	Filter loose or damaged.	Check and replace as necessary.
Abnormal sound from machine.		Book service.

EC Declaration of Conformity

We hereby declare that DC Tromb Twin complies with the following regulations and standards: 2006/42/EC, 2014/35/EC, 2014/30/EC, EN 60204-1:2006/A1:2009, EN1822-1: A1:2009.

Dustcontrol AB

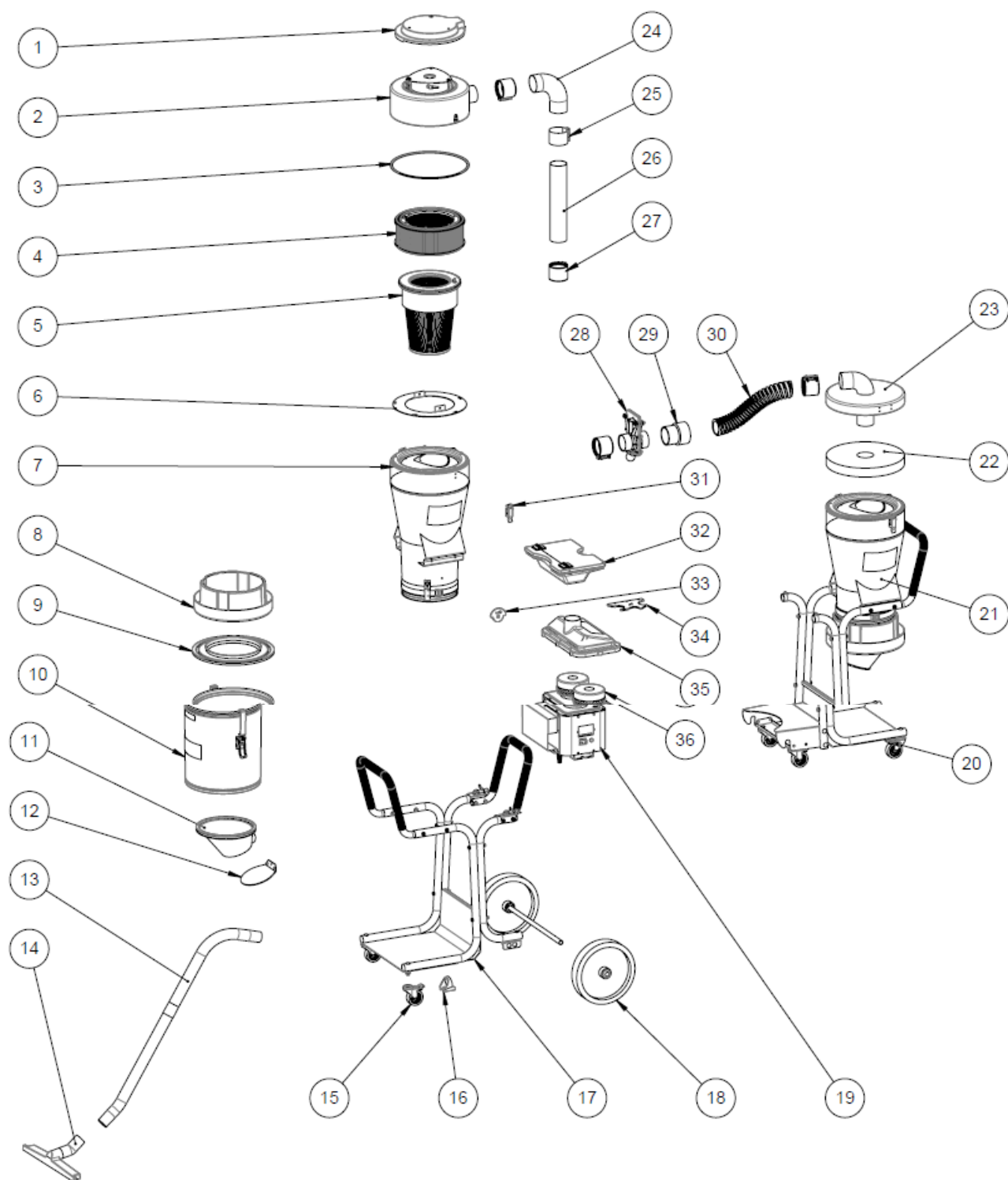


Anna-Lena Berg / CEO
2021-05-03



Peter Söderling / Technical Manager
2021-05-03

Spare parts



Number	Part No.	Description
1	45003	Plastic cover
2	44653	Cover complete
3	42273	Gasket
4	44016	HEPA filter
5	44017	Fine filter, polyester
6	45400	Support
7	44955	Cyclone Basic

8	432175	Longopac holder, mini
9	42074	Bottom cover
10	40070	Container 40 l
11	42012	Cone with flap
12	4847	Discharge valve
13	7265	Suction pipe 50 steel (2 parts)
14	7238	Floor nozzle 500 A-50
15	42267	Castor wheels D=75
16	44688	Suction pipe holder
17	44666-1	Chassis 1 Tromb Twin
18	40497	Wheel D=300
19	44700*	Motor package
20	44666-2	Chassis 2 Tromb Twin
21	44955	Cyclone Basic
22	44960	Protective mat
23	44575	Pre-separator cover
24	45072	Hose 75 Black L300
25	3007-01	Pipe joint 76 without rubber
26	45369	Inlet pipe
27	3007	Joint 76 EPDM
28	804300	Sliding throttle
29	45377	Sleeve
30	44142	Suction hose 76 PU GFF/AS
31	42366	Excenter lock
32	44961	Accessory box, complete
33	42792	Holder bag 2900 (ear)
34	44692	Suction pipe holder
35	44742	Cover engine package complete
36	44957*	Motor 1485W

*For the part no. of Motor Package KPL, see below

Part No.	Description
44700-1	230V EU
44700-2	115V CAN

Part No.	Description
44700-3	230V UK
44700-4	230V EU
44700-5	115V UK
44700-6	115V US
44700-7	230V CH

*For the part no. of the motor, see below

Part No.	Description
44957	1485W EU
44957-1	1050W US/CAN
44957-2	1285W UK (230V)
44957-3	1340W UK (115V)



Dustcontrol AB

- Box 3088
- Kumla Gårdsväg 14
- SE-145 03 Norsborg
- Tel: +46 8 531 940 00
- support@dustcontrol.se
- www.dustcontrol.com

Barin, s.a.

- Tel: +34 91 6281428
- info@barin.es
- www.barin.es

Documents / Resources

 	<p>Dustcontrol Tromb Twin 400 Extractor [pdf] User Manual Tromb Twin 400 Extractor, Tromb Twin, 400 Extractor, Extractor</p>
--	--

References

- [com.trventek.com](#)
- [com.twgoodland.com](#)
- [VisionXE](#)
- [Ida.tel](#)
- [Dustcontrol - Manufacturer of industrial and construction vacuum cleaners](#)
- [User Manual](#)

[Manuals+.](#) [Privacy Policy](#)

This website is an independent publication and is neither affiliated with nor endorsed by any of the trademark owners. The "Bluetooth®" word mark and logos are registered trademarks owned by Bluetooth SIG, Inc. The "Wi-Fi®" word mark and logos are registered trademarks owned by the Wi-Fi Alliance. Any use of these marks on this website does not imply any affiliation with or endorsement.