

Contents [[hide](#)]

- [1 duplex RCPS10 2.4EX RC Power Switch](#)
- [2 Description and functions](#)
- [3 Connection](#)
- [4 Technical data](#)
- [5 Diagram menu displayed by Jetibox](#)
- [6 Connecting the RC Switch](#)
- [7 Warranty](#)
- [8 FCC](#)
- [9 Declaration of Conformity](#)
- [10 MORE INFORMATION](#)
- [11 FAQs](#)
- [12 Documents / Resources](#)
 - [12.1 References](#)



duplex RCPS10 2.4EX RC Power Switch



Description and functions

- RCSwitch is a wireless switch designed especially for JETI model products (BEC stabilizers, Central Box and other accessories) that increase the comfort of model control.
- RCSwitch operation and setting is done using a JETI Model DC/DS transmitter only.

Pairing

Pairing is done similarly to the pairing of receivers using the Bind Plug.

Procedure for pairing:

1. Connect the Bind Plug to the EXT output.
2. Connect the power supply to the Control Output.
3. Select “pairing” in the RCSwitch menu in the JETI transmitter.
4. Select a control for the RCSwitch in the transmitter, select the polarity of the switch, then also assign the audio sequence.

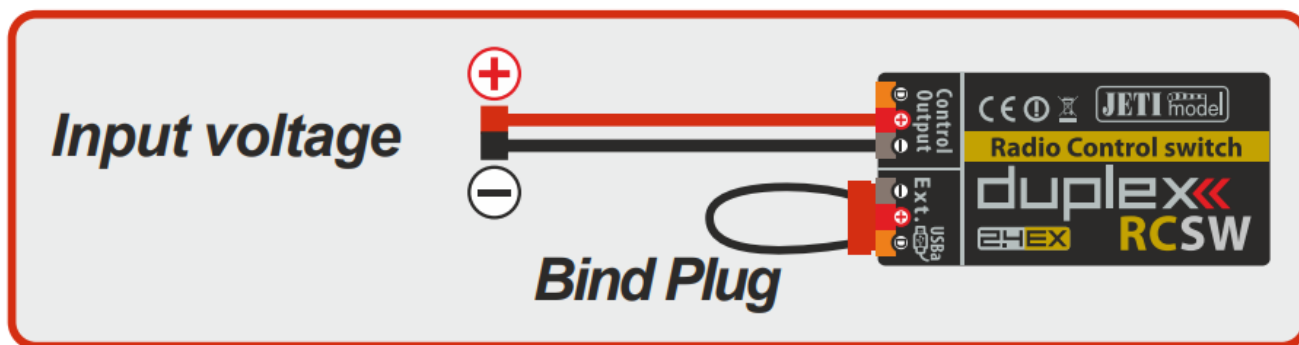


Fig. 1:Pairing

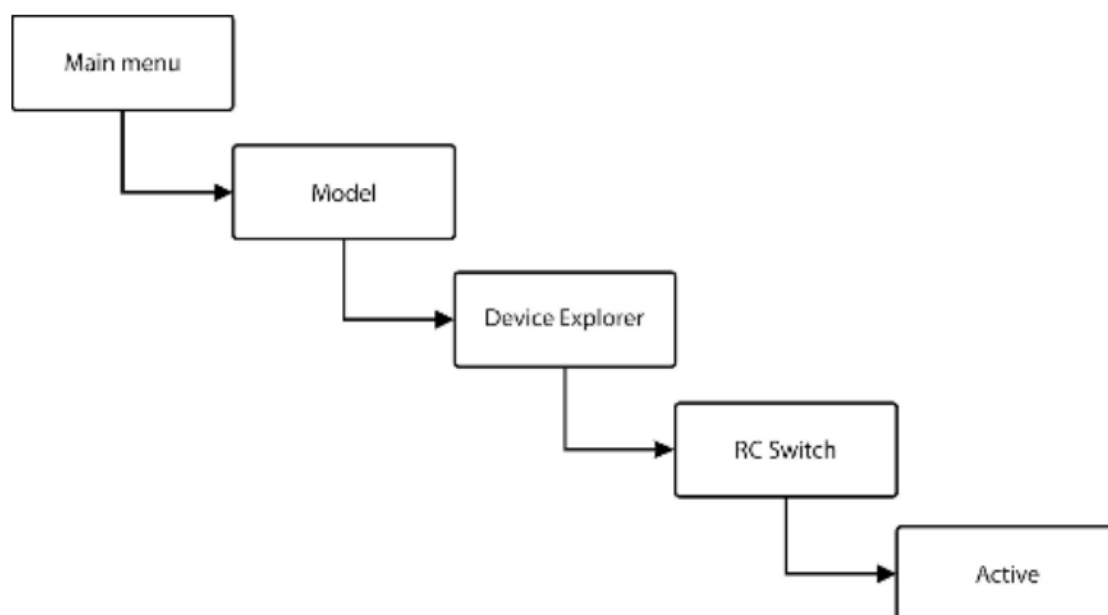


Fig. 2:Setting the RCSwitch in the JETI transmitter

Switching is indicated by a red LED that is visible through the opening on the side of the RCSwitch. Setting the polarity of the switch is specific for each JETI model product. In the chart below, there is a list of several supported devices and their RCSwitch settings for DC and DS transmitters.

DEVICE Inverted polarity of the switch

- DPS 40 ✕
- SPS 20 ✕
- DSM 10 ✕
- Central Box 200 ✕
- Central Box 400 ✕
- Main Switch ✕

Connection

In normal mode the Ext slot is not used for output. It is used for pairing, for software updates and for connecting the JETIBOX terminal. However it is possible to supply power to both the RC Switch and the RC Power Switch through the Ext. or Control Output slots.

RCSwitch

Switched output is a signal line.

RCPowerSwitch(RCPS5, RCPS10)

- The power supply is connected via a two-wire cable. The positive pole is switched, the negative pole is common.
- For switching on constant currents lower than 5A, use the RC PowerSwitch5.
- For switching on constant currents lower than 10A, be sure to use the RCPowerSwitch10.

The maximum switching current must not be exceeded, see chapter „3. Technical data”.

Update

The RC Switch allows updating the firmware via PC. Updating is done using the Jeti USB adapter.

Procedure:

1. Find the program to update to the latest firmware on the manufacturer's website under "Downloads". Save it to your computer.
2. Connect the USB adapter to your computer. The procedure of installing the drivers for the USB adapter is included in the USB adapter manual.
3. Run the firmware update on your PC.
4. Connect the USB adapter to the RCSwitch (Ext. output) using a three-wire cable.
5. Přehodit pořádek slov: After connecting the device the update will begin.

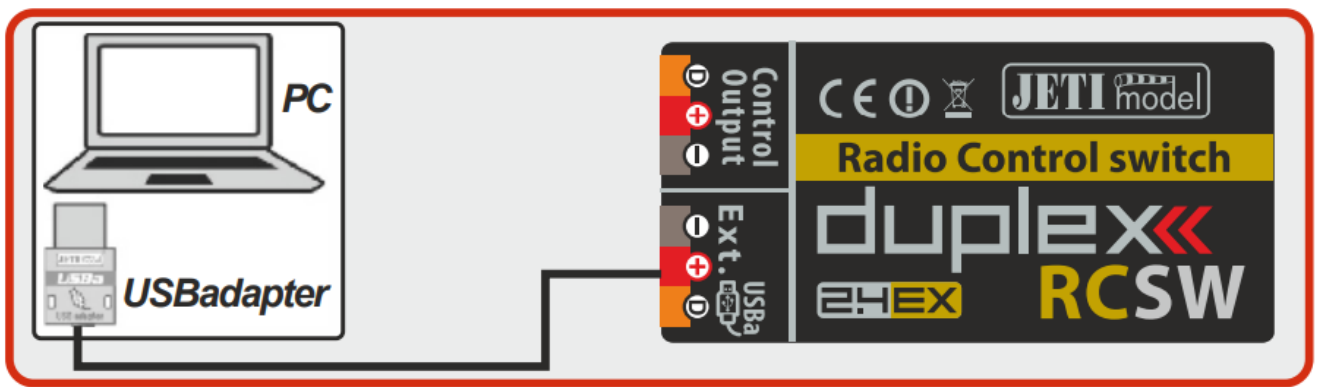


Fig. 3: Update

Connection examples

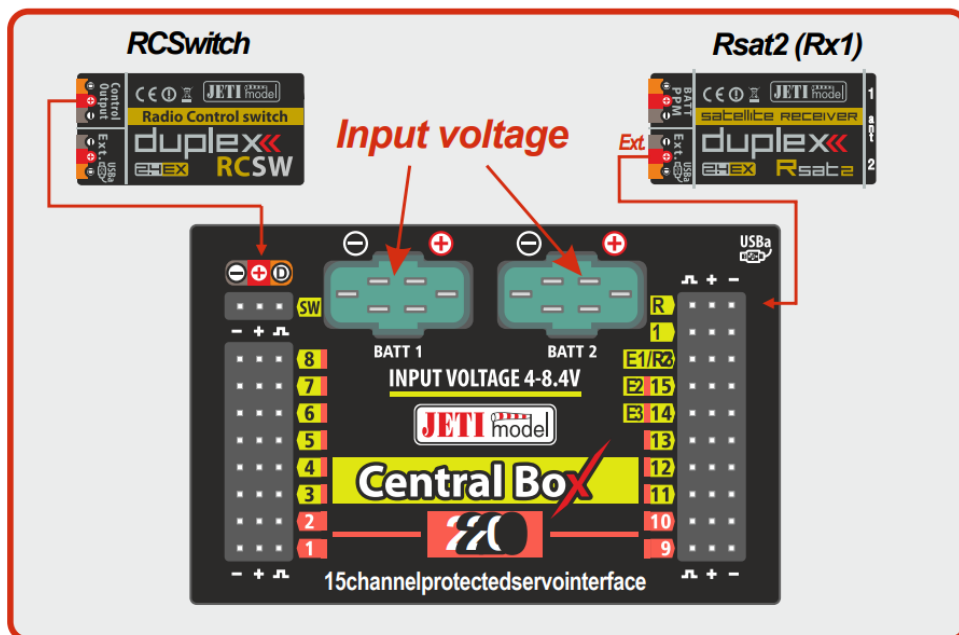


Fig. 4: Application connection with RCSwitch

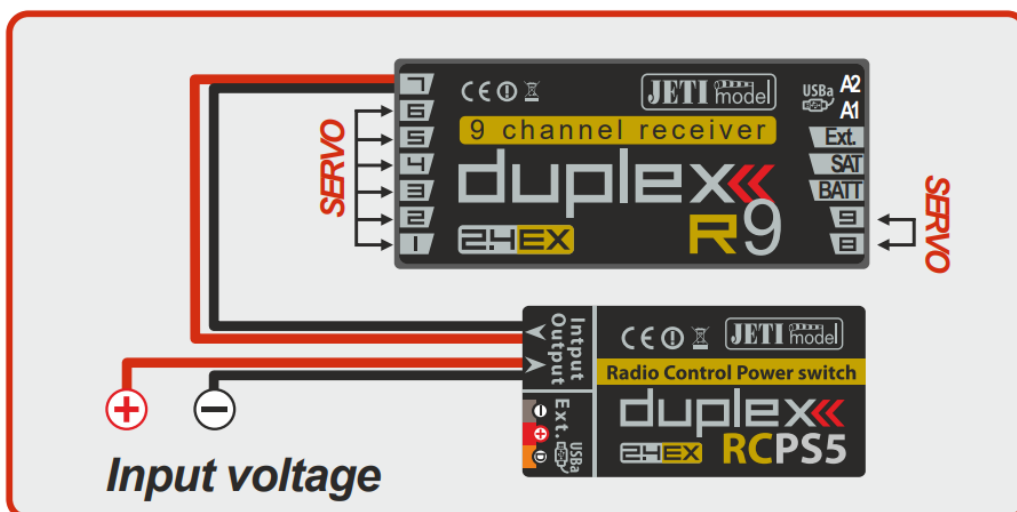


Fig. 5: Application connection with RCPower Switch

Technical data

Typ	RCSW	RCPS 5	RCPS10
Recommended input voltage	3.3 – 51V	3.3 – 24V	3.3–24V
Switching current	-	5A	10A
Input/Output connectors	-	JR	MPX

Power consumption in on-mode	Typ. 20mA
Power consumption in standbymode	Typ. 80uA
Operating temperature	-20°C up to 85°C (-4°F up to 185°F)
Weight	8 g
Dimensions	38 x 7 x 20 mm

Diagram menu displayed by Jetibox

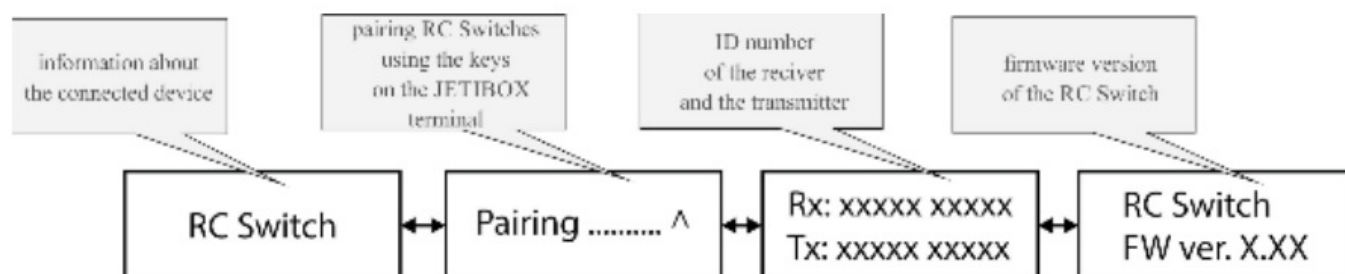


Fig. 6:Diagrammenu

Connecting the RC Switch

to JETI model products

For a device that allows connecting the switch via JR JR-type connector, you can connect the RC Switch directly. For others that come with a standard magnetic switch without JR connector, you must interrupt the three-wire magnetic switch cable and solder in an RC Switch. To connect devices that do not allow direct connection of the RC Switch, we recommend installation in a professional workshop.

When connecting wires is necessary to keep their color code (brown wire connected to the brown wire, etc.)!

Warranty

Warranty, service and technical support

Warranty and service

This product is covered by warranty for 24 months after the day of purchase, provided that it has been operated in accordance with these instructions at the specified voltage and is not mechanically damaged. When claiming warranty repairs for the product, always attach proof of purchase. Warranty and post-warranty service is provided by your dealer or the manufacturer.

Technical support

In case you are not sure about the setup or some functions of the product, do not hesitate to contact our technical support. You can contact either your dealer or the manufacturer JETI models, r.o..

- For further information, visit www.jetimodel.cz.

Information on Disposal for Users of Waste Electrical & Electronic Equipment (private households)



■ This symbol on the products and/or accompanying documents means that used electrical and electronic products should not be mixed with general household waste. For proper treatment, recovery and recycling, please take these products to designated collection points, where they will be accepted on a free-of-charge basis. Alternatively, in some countries, you may be able to return your products to your local retailer upon the purchase of an equivalent new product. Disposing of this product correctly will help to save valuable resources and prevent any potential negative effects on human health and the environment which could otherwise arise from inappropriate waste handling. Please contact your local authority for further details of your nearest designated collection point. Penalties may be applicable for incorrect disposal of this waste, in accordance with national legislation.

For business users in the European Union

If you wish to discard electrical and electronic equipment, please contact your dealer or supplier for further information

Information on Disposal in other Countries outside the European Union

This symbol is only valid in the European Union. If you wish to discard this product, please contact your local authorities or dealer and ask for the correct method of disposal

FCC

FCC and IC conformity:

PART 15:

THIS DEVICE COMPLIES WITH PART 15 OF THE FCC RULES. OPERATION IS SUBJECT TO THE FOLLOWING TWO CONDITIONS: (1) THIS DEVICE MAY NOT CAUSE HARMFUL INTERFERENCE, AND (2) THIS DEVICE MUST ACCEPT ANY INTERFERENCE RECEIVED, INCLUDING INTERFERENCE THAT MAY CAUSE UNDESIRE OPERATION.

NOTE: THE GRANTEE IS NOT RESPONSIBLE FOR ANY CHANGES OR MODIFICATIONS NOT EXPRESSLY APPROVED BY THE PARTY RESPONSIBLE FOR COMPLIANCE. SUCH MODIFICATIONS COULD VOID THE USER'S AUTHORITY TO OPERATE THE EQUIPMENT.

NOTE: This equipment has been tested and found to comply with the limits for a Class B digital device, pursuant to part 15 of the FCC Rules. These limits are designed to provide reasonable protection against harmful interference in a residential installation. This equipment generates uses and can radiate radio frequency energy and, if not installed and used in accordance with the instructions, may cause harmful interference to radio communications. However, there is no guarantee that interference will not occur in a particular installation. If this equipment does cause harmful interference to radio or television reception, which can be determined by turning the equipment off and on, the user is encouraged to try to correct the interference by one or more of the following measures:

- Reorient or relocate the receiving antenna.
- Increase the separation between the equipment and receiver.
- Connect the equipment into an outlet on a circuit different from that to which the receiver is connected.
- Consult the dealer or an experienced radio/TV technician for help.

This device complies with Industry Canada license-exempt RSS standard(s). Operation is subject to the following two conditions: (1) this device may not cause interference, and (2) this \ device must accept any interference, including interference that may cause undesired operation of the device.

Declaration of Conformity

Declaration of Conformity

in accordance with the regulations of EU Directive
RED 2014/53/EU and RoHS 2011/65/EU.

This declaration of conformity is issued under the sole responsibility of the manufacturer.

Producer: JETI model s.r.o.
Lomená 1530, 742 58 Příbor, Česká republika
IČ 26825147

declares, that the product

Type designation: receiver DUPLEX EX
Model number: RCSW, RCPS5, RCPS10
Frequency band: 2400,0 – 2483,5 MHz
Max power: 100 mW e.i.r.p.

**The stated product complies with essential requirements of
RED Directive 2014/53/EU and RoHS Directive 2011/65/EU.**

Harmonised standards applies:

Measures for the efficient use of the radio frequency spectrum [3.2]

EN 300 328 V 2.2.2

Protection requirements concerning electromagnetic compatibility [3.1(b)]

EN 301 489-1	V 2.1.1
EN 301 489-3	V 2.1.1
EN 301 489-17	V 3.1.1

Electrical Safety and Health [3.1(a)]

EN 62368-1:2015 EN 62479:2010

RoHS

EN 50581:2012

Příbor, 11.5.2021


Ing. Stanislav Jelen,
Managing Director


MORE INFORMATION

- JETImodels.r.o.
- Lomená 1530, 742 58 Příbor CzechRepublic-EU
- www.jetimodel.com
- info@jetimodel.cz

FAQs

- **Q: How do I pair the COM PLEX RADIO CONTROL SYSTEM?**
 - A: Refer to section 1.1 “Pairing” in the manual for detailed instructions on pairing the system.
- **Q: What are the dimensions of the RC Power Switch models?**
 - A: The dimensions of RCPS5 are 38 x 7 x 20 mm.

Documents / Resources

	duplex RCPS10 2.4EX RC Power Switch [pdf] User Manual RCPS10, RCPS5, RCPS10 2.4EX RC Power Switch, RCPS10, 2.4EX R C Power Switch, Power Switch, Switch
---	---

References

- [User Manual](#)

2.4EX RC Power Switch, Duplex, Power Switch, RCPS10, RCPS10 2.4EX RC Power Switch, RCPS5,
duplex switch

Leave a comment

Your email address will not be published. Required fields are marked *

Comment *

Name

Email

Website

☐ Save my name, email, and website in this browser for the next time I comment.

Post Comment

Search:

e.g. whirlpool wrf535swhz

Search

[Manuals+](#) | [Upload](#) | [Deep Search](#) | [Privacy Policy](#) | [@manuals.plus](#) | [YouTube](#)

This website is an independent publication and is neither affiliated with nor endorsed by any of the trademark owners. The "Bluetooth®" word mark and logos are registered trademarks owned by Bluetooth SIG, Inc. The "Wi-Fi®" word mark and logos are registered trademarks owned by the Wi-Fi Alliance. Any use of these marks on this website does not imply any affiliation with or endorsement.