

Ducky Zero 6108 Mechanical Keyboard



Ducky Zero 6108 Mechanical Keyboard User Manual

[Home](#) » [Ducky](#) » Ducky Zero 6108 Mechanical Keyboard User Manual 

Contents

- [1 Ducky Zero 6108 Mechanical Keyboard](#)
- [2 Fn Key Combinations](#)
- [3 General Fn Key Combinations](#)
- [4 RMA's Information](#)
- [5 FCC](#)
- [6 Documents / Resources](#)
 - [6.1 References](#)
- [7 Related Posts](#)



Ducky Zero 6108 Mechanical Keyboard



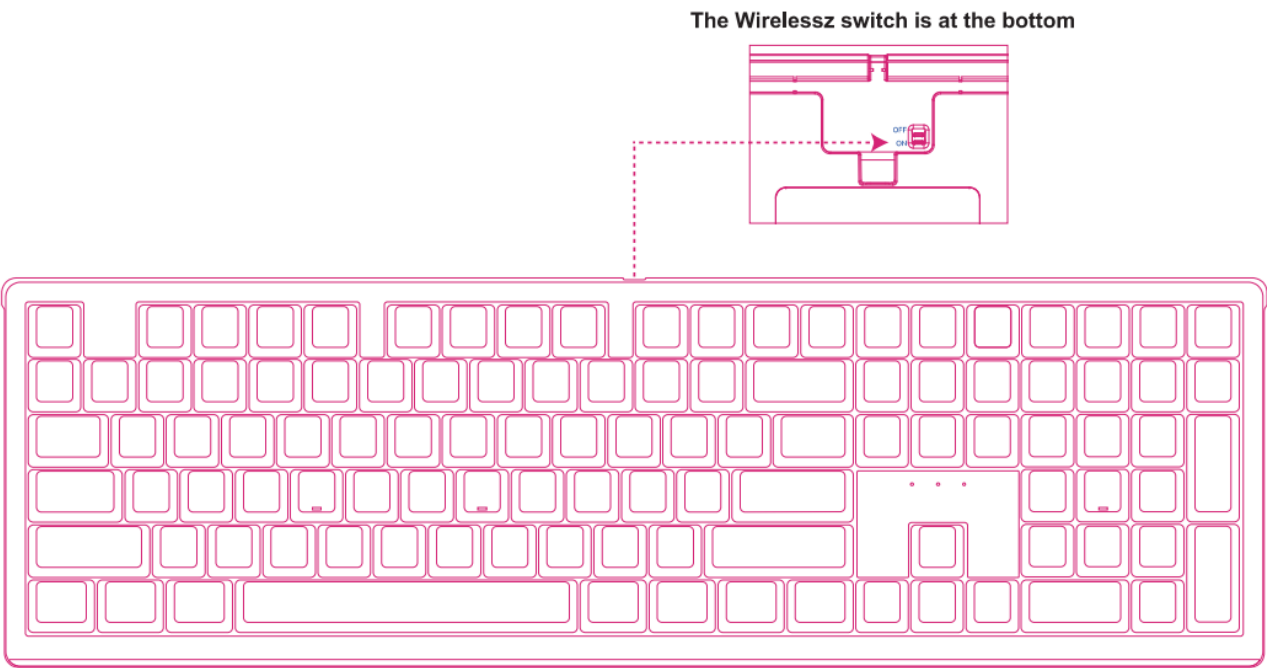
Ducky Zero 6108

- Mechanical Keyboard
- Switch: MX Switch
- PBT Double – Shot Keycap
- Made in China

100%

- Size: 435 x 135 x 40 mm
- Weight: 1200g

The specific specifications may vary in each region. For detailed information, please inquire with the local agents.



Fn Key Combinations

Fn +	F1		My computer	
	F2	=	Browser	
	F3		Email	
	F4		Media Player	For Windows
	FS		Last track	
	F6		Next track	
	F7		Play/Pause	
	F8		Stop	



System Compatible

- Bluetooth/2.4GHz compatible with Win8/Win10/Win11/MacOS (Except for some special function keys). (Bluetooth4.0 and above)
- Wired mode compatible with WinXP/Win7/Win10/Win11/MacOS (Except for some special function keys).

Light Effects



Fn +	1		Always ON / Single ON / Single OFF
	2	=	Spread breathing effect/ Vertical breathing effect/ Horizontal breathing effect
	3		Blinking effect/ Blinking effect{slow}
	4		Spread effect{slow} / Single row/ spread effect
	5		Color shifting breathing / Horizontal spread breathing / Single color breathing / Whole color shifting breathing
	6		Marquee effect 1 / Marquee effect 2 / Marquee effect 3

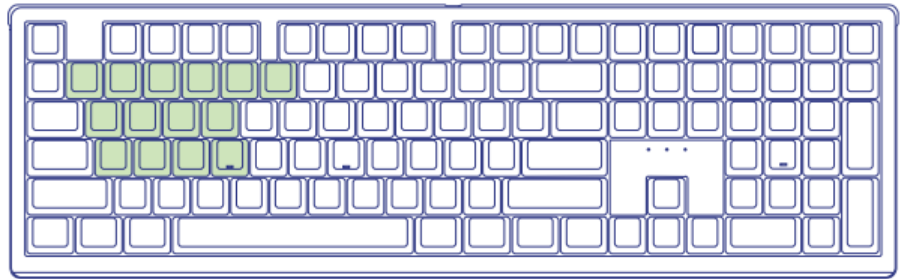
- Press Fn+7& to switch light effect color(use with other lighting effects)
- Press Fn+ 1' / J, to increase / decrease the total brightness of the light.
- Press Fn+ f-/→ to slow down/ speed up the speed of light.
- Custom lighting record:
 - **Step 1.** Fn+S/9/0,hold for 3 second, start custom lighting record (Fn+S/9/0 represents 3 different set up)
 - **Step 2.** Indicator light blinking, one press to modify a single color (change color once per press)
 - **Step 3.** Once again hold Fn+S/9/0 for 3 second, indicator light stop blinking, end the recording and save the set up.

Light Effect Customize



Fn+S/9/0: Light effect customize (3 set)

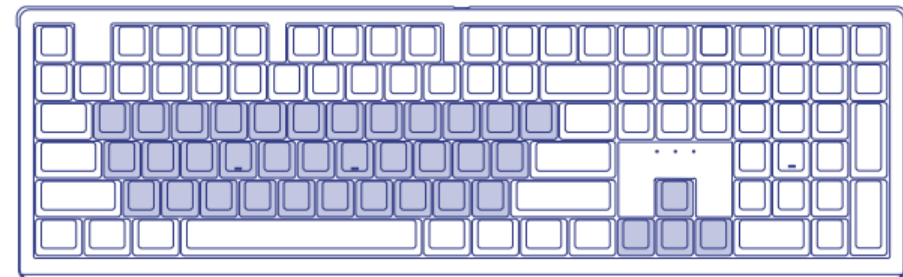
 Custom lighting 1.



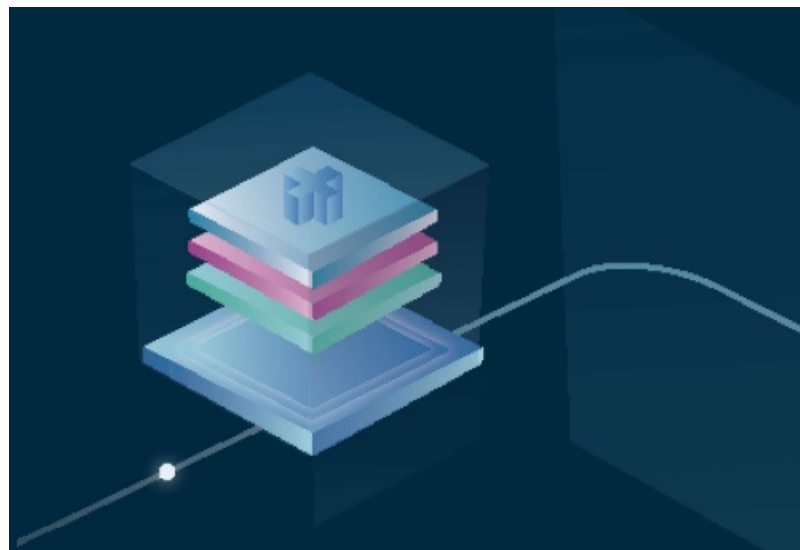
 Custom lighting 2.



 Custom lighting 3.



Indicator Lights



- **Charging Indicator(ESC key)**

- When the battery is low and unplugged, Esc will be blinking.
- While charging, press Fn key, Esc shows blue light, recovery after release.
- When fully charged, press Fn key, Esc shows green light, recovery after release.
- When battery is low, press Fn key, Esc shows red light, recovery after release.

- **Devices Indicator**

- Q,W,E,R indicated different Bluetooth connections.
- Devices Indicator(Q,W,E,R keys'light) blinking while waiting for pairing.
- Stop blinking after successfully connection.

- When pressing FN key, the key for current connected device (include wired connection mode) shows green light, other keys for the devices show blue light.
- **Three indicator lights under End key represent**
 - Left light is for Num Lock: Lights on is locked, lights off is unlocked.
 - Middle light is for Caps Lock: Lights on for Upper case, lights off for lower case.
 - Right light is for Scroll Lock: Lights on is locked, lights off is unlocked.
 - Turn on power, three indicator lights under End key blink one time.

General Fn Key Combinations

- Caps/Ctrl_L Key Swap: Fn+Caps
- Lock/Unlock Win_L: Fn+Win_L
- System Swap (Windows): Fn+A
- System Swap (Mac): Fn+S
- Reset: hold Fn+Space for 3 second

Wired/2.4GHz/Bluetooth Connection Mode

- Fn+Q to R connect No.1 to No.4 Bluetooth devices, the Bluetooth names are Ducky 6108 BT-1/2/3/4 (Press for swap, hold 3 second for pairing)
- Fn+ T change to wired connection
- Fn+G change to 2.4G connection

Memory Function: If there was a connected device, it will connect to the last device automatically. (If there is already a wired connection device at this time, the wired connection takes precedence)

- 2.4GHz/Bluetooth:
 - Pending after 1 minute, Indicators/Lights turn off (press any key to turn on)
 - Pending after 30 minutes, Keyboard goes into sleep mode (press any key to wake up)

RMA's Information

Warranty Policy

- All Ducky Keyboards/Mice are covered with a one-year warranty starting from the day of purchase.
- Warranty only applies to defects in materials or workmanship, which can occur during normal use. We will provide RMA procedure, maintenance, and replacement parts within the warranty period.
- Product issues caused by human error will not be covered under warranty. Repair fees will be charged for any issues done by human error, there is no guarantee of a successful repair.
- Some defective items will not be repaired if the damage is too extensive.
- Warranty will be voided if the original serial number on the product, warranty sticker or product itself is disassembled. If the product is no longer under the warranty period, repair fees will be charged and customers will be responsible for both shipping charges.
- When using the product, please avoid any beverage or liquid being poured onto the keyboard/mouse. Please note products that are damaged by spillage will lose its stability and will not be repaired.

- Excluded from warranty cover are faults resulting from lack of maintenance, inadequate servicing misuse, neglect, accidental damage, liquid spills, the effects of heat or fire, vandalism, theft, environmental conditions, dirt, dust, rodents or insects; cosmetic or superficial damage to cause after purchasing; damage caused by power surges or other causes covered by normal contents insurance.

Repairment policy

- Please provide the warranty card
- Please contact Ducky official distributor from your region and ask them to assist you in RMA/repair procedure.
- DuckyChannel reserves the right to decline exchange or repair service due to short supply of material, parts or components.

User Manual Guide



Official site

Products

Model name

Download

User manual

Note

For detailed specifications of Traditional Chinese and English, please scan the QR CODE

FCC

This device complies with part 15 of the FCC Rules. Operation is subject to the following two conditions:

1. This device may not cause harmful interference, and
2. This device must accept any interference received, including interference that may cause undesired operation.

Any changes or modifications not expressly approved by the party responsible for compliance could void the user's authority to operate the equipment.

NOTE: This equipment has been tested and found to comply with the limits for a Class B digital device, pursuant to Part 15 of the FCC Rules. These limits are designed to provide reasonable protection against harmful interference in a residential installation. This equipment generates, uses and can radiate radio frequency energy and, if not installed and used in accordance with the instructions, may cause harmful interference to radio communications. However, there is no guarantee that interference will not occur in a particular installation.

If this equipment does cause harmful interference to radio or television reception, which can be determined by turning the equipment off and on, the user is encouraged to try to correct the interference by one or more of the following measures:

- Reorient or relocate the receiving antenna.
- Increase the separation between the equipment and receiver.
- Connect the equipment into an outlet on a circuit different from that to which the receiver is connected.
- Consult the dealer or an experienced radio/TV technician for help.

The device has been evaluated to meet general RF exposure statement.
The device can be used in portable exposure condition without restriction


- In put: 5V=1000mA FCC ID: 2AF8O-6108
- BLE: Operating frequency: 2402-2480MHz; Maximum output power:-13.36dBm
- 2.4G SRD: Operating frequency: 2404-2478MHz; Maximum output power:2dBm
- Brand: Ducky
- Model: Ducky Zero 6108

WARNING

Changes or modifications to this unit not expressly approved by the part responsible for compliance could void the user's authority to operate the equipment

www.duckychannel.com.tw

Documents / Resources

	<p>Ducky Zero 6108 Mechanical Keyboard [pdf] User Manual 2AF8O-6108, 2AF8O6108, 6108, Zero 6108 Mechanical Keyboard, Zero 6108, Mechanical Key board, Keyboard</p>
---	--

References

- [User Manual](#)

This website is an independent publication and is neither affiliated with nor endorsed by any of the trademark owners. The "Bluetooth®" word mark and logos are registered trademarks owned by Bluetooth SIG, Inc. The "Wi-Fi®" word mark and logos are registered trademarks owned by the Wi-Fi Alliance. Any use of these marks on this website does not imply any affiliation with or endorsement.