

Contents [[hide](#)]

- [1 Ducky One 3 SF RGB Mechanical Keyboard](#)
- [2 Specification](#)
- [3 Features](#)
- [4 Keyboard configuration diagram, US layout used as example](#)
- [5 RGB Backlit Modes](#)
- [6 Multimedia Function](#)
- [7 Display Mode](#)
- [8 Key Switch Functions](#)
- [9 Hot-swap](#)
- [10 Documents / Resources](#)
 - [10.1 References](#)



Ducky One 3 SF RGB Mechanical Keyboard



Specification

- **Type** Mechanical keyboard

- **LED** RGB color LED
- **Keycap material** PBT or ABS
- **Printing method** Double-shot or Laser Engrave
- **Origin of Production** Taiwan
- **Size** 335 x 110 x 40 mm
- **Weight** 700g

Features

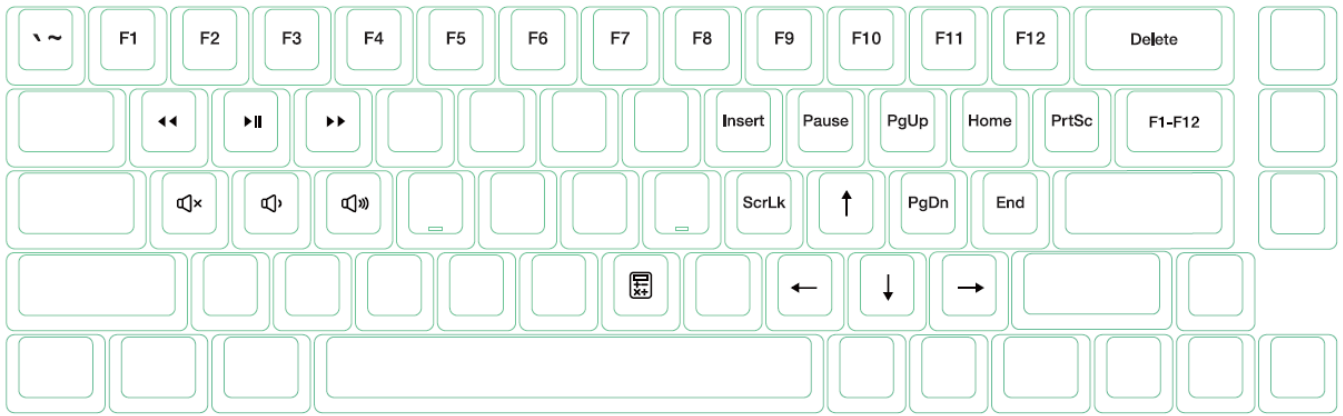
- Hot-swappable Kailh sockets
- Various RGB LED lighting modes
- True USB Type-C interface, compatible with all Type-C devices
- Provides mouse functions for a convenient experience
- Miniature yet packed with features
- Supports Ducky Macro through hardware, personalize functions as you like Products with PBT Double-shot Seamless keycaps, providing the perfectly exceptional typing experience

Keyboard configuration diagram, US layout used as example

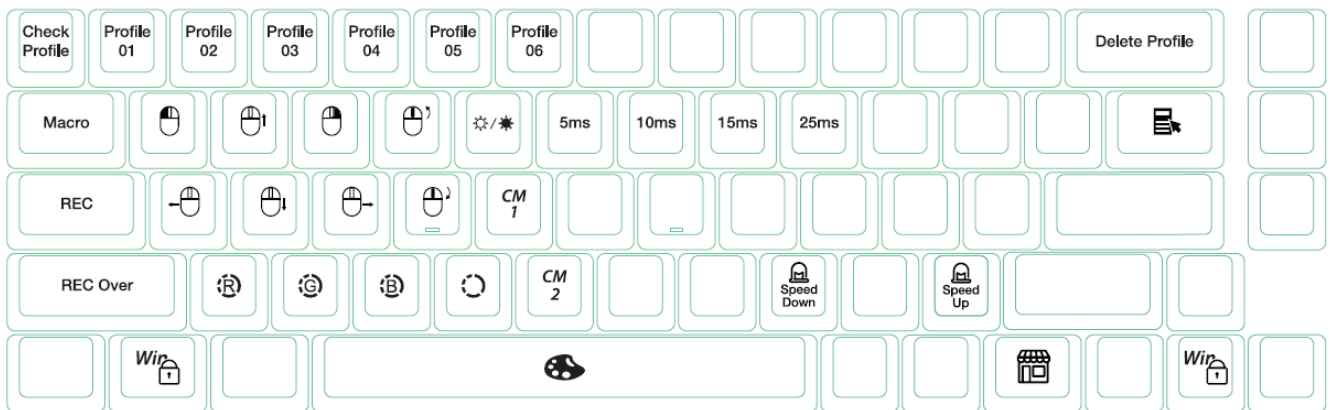
Standard Layer



Fn Layer




Fn + Alt Layer



RGB Backlit Modes

Fn + Alt + T	First mode: Wave mode (Default)	Seventh mode: Halo mode
	Second mode: Color Cycle mode	Eighth mode: Breathe mode
	Third mode: Rain Drop mode	Ninth mode: 100% Full Backlit mode
	Fourth mode: Ripple mode	Tenth mode: Radar mode
	Fifth mode: Rainbow Reactive mode	Eleventh mode: Laser mode
	Sixth mode: Reactive mode	Twelfth mode: Backlit OFF

- All above modes can be adjusted with the following key sequence:
 - **Fn + Alt + /** Decrease speed
 - **Fn + Alt + ,** Increase speed
- Hold Fn + Alt + T for 3 seconds to turn off all backlit (including CM1 and CM2).
- Only the backlit modes with  can be adjusted using the following:
 - **Fn + Alt + Z** Adjust color red (R) brightness. 10 Levels.
 - **Fn + Alt + X** Adjust color green (G) brightness. 10 Levels.
 - **Fn + Alt + C** Adjust color blue (B) brightness. 10 Levels.
 - **Fn + Alt + V** Erase red, green and blue color setting.

- **Fn + Alt + Spacebar (Color palette)** Activate color palette to display various colors on each key, press on the desired color, all the keys will automatically change to match.

RGB LED Zone Customization Modes

Fn + Alt + G	<p>CM1 cycle:</p> <p>First step: Turn on user's customized zone and color.</p> <p>Second step: Turn on user's customized zone and color in breathe mode. Third step: Turn off CM1.</p>
Fn + Alt + B	<p>CM2 cycle:</p> <p>First step: Turn on user's customized zone and color.</p> <p>Second step: Turn on user's customized zone and color in breathe mode. Third step: Turn off CM2.</p>
Fn + Alt + Caps Lock (REC)	Press for 3 seconds until the G (CM1) and B (CM2) keys light up, choose the layer for setting, press it again and start recording.
Caps Lock + Z	Adjust color red (R) , 10 levels.
Caps Lock + X	Adjust color green (G), 10 levels.
Caps Lock + C	Adjust color blue (B), 10 levels.
Caps Lock + V	Erase all LED light
Caps Lock + Spacebar	Color palette
Caps Lock + Left Shift	REC over, finish recording

Recording steps: Adjust to the color first, then set the individual keys to be set to that color.

1. Press Fn + Alt + Caps Lock for 3 seconds, the buttons G (CM1) and B (CM2) will illuminate then press G to set CM1 and press B to set CM2.
2. When starting recording mode, Caps Lock will display the current LED color. The color can be adjusted by hitting Caps Lock + Z / X / C / V. After setting the desired color, hitting any key on the keyboard will set that key to the selected color.
3. Repeating the above steps allows the user to set different colors to different keys. If the key has been set, press again to cancel the setting.
4. To finish recording, press Caps Lock + Left Shift (REC over) to finish recording. The color of the Caps Lock key is the value you set.

Note:

- When starting recording mode, Caps Lock will display the current LED Color.
- CM1 CM2 can work with other LED light modes at the same time. CM1 and CM2 can be turned on along with other lighting modes. In addition, CM1 has the priority over CM2 when the zone overlaps. Press Fn + Alt + T for 3 seconds to turn off ALL backlit modes.
- If there is no activity in 30 seconds in the recording mode, the recording session will terminate without saving.
- Caps Lock LED color follows the “100% Full Backlit mode”.

Multimedia Function

Fn + Alt + W	Mouse cursor up	Fn + Alt + Q	Left mouse button
Fn + Alt + A	Mouse cursor left	Fn + Alt + E	Right mouse button
Fn + Alt + S	Mouse cursor down	Fn + Alt + R	Roller up
Fn + Alt + D	Mouse cursor right	Fn + Alt + F	Roller down

Debounce Time Setting

5ms	Fn + Alt + Y	Hold the combine keys for 3 sec, the keyboard will flash 3 times to indicate the debounce time has been switched successfully.
10ms (Default)	Fn + Alt + U	
15ms	Fn + Alt + I	
25ms	Fn + Alt + O	

Note: The method is to adjust the debounce time of the metal shrapnel in the mechanical shaft during the pressing process. The shorter the time, the sooner it can be triggered, but if the time is too short may cause misjudgement. If it's not necessary to change the time, the default value is recommended.

Display Mode

- **Hold Fn + R_Alt + R_Ctrl for 3 sec**

- To display various LED backlit modes
- The entire keyboard will be disabled while cycling through various RGB modes.
- Unplug the keyboard to quit Display Mode.

Note: Used for showcasing purposes.



US ANSI and EU ISO layout	Left Windows key + ↓ key
JP JIS layout	Fn+ Left Windows key

Note: Hold for 3 seconds. The keyboard's backlight will flash 3 times to indicate the keyboard has been reset.

Enable/ Disable Windows Function (Windows Key Lock)

Fn + any Alt key+ Left Windows key for 3 seconds, the keyboard's backlit will flash 3

times to indicate the keyboard has been enabled/ disabled.

Key Switch Functions

1. **Applicable keys:** Fn/Alt/Ctrl/Windows/Caps lock

2. **Operation:**

- Press Fn + Alt + k for 5 seconds.
- Until the ESC, L_Ctrl, L_Win, L_Alt, R_Alt, Fn, R_Ctrl, and Caps lock keys are all lighting up. The colorways are respectively pink, red, orange, yellow, green, blue, and purple.
- Except for Caps lock key, the rest of 6 keys are able to switch each function and color at will. (2 keys max at the same time)
- Pressing Caps lock once will change it to FN.
- Pressing Caps lock twice will change it to L-Ctrl.
- Press Esc key once to finish the switching function.
- Press Capslock again to resume Capslock.
 - **Note:** You can press Esc key to leave the switching function before starting it.



DIP Switch Functions

DIP switch functions

1 DIP1	OFF Default	ON
	Disable F Row Toggle (FN+\\)	Enable F Row Toggle (FN+\\)
	OFF Default	ON

DIP2	N-Key Rollover mode	6-Key Rollover mode
2 DIP3	OFF Default	ON
	Ducky Vender ID (VID)	Vender ID definable
DIP4	OFF Default	ON

Note:

- ISO Layout DIP 1



- You can input the ideal VID in both situation, but the VID can be only changed when DIP 3 turned on.v

Ducky One 3 SF Macro

- **Step 1.** Profile selections

Fn + Alt		1		Switch to profile 1	Factory settings (Default)
		2		Switch to profile 2	
	+	3	=	Switch to profile 3	

		4		Switch to profile 4	Customize Macro key features
		5		Switch to profile 5	
		6		Switch to profile 6	

- **Step 2.** To start Macro recording
 - Press Fn + Alt + Tab for 3 seconds to start Macro recording. Once in recording mode the Caps Lock or indicator lights will flash slowly.
- **Step 3.** Press a key to start recording Macro
 - Press on the key you want to use to activate Macro. The key pressed will blink (Non-backlit version will not) and the
 - Caps Lock or indicator lights will flash swiftly.
- **Step 4.** Recording Macro
 - Enter any key, and choose the Macro implementation and record time option.
- **Step 5.** To continue recording another key (Jump out the current recording file)
 - Press Fn + Alt to choose another key to continue recording.
- **Step 6.** Finish recording
 - Press Fn + Alt + Tab for 1 second to finish recording and back to the profile.
 - **Note:**
 - When keyboard is plugged in, Caps Lock and Number Keys will blink based on selected profile number.
 - Adjust profile to 2~6 in order to set Macro.
 - After profile is switched, Caps Lock or Indicator light will blink based on the current profile number.

Hotkeys Function

		Tab	Start recording : Press for 3 seconds. Finish recording: Press for 1 second.
--	--	-----	--

Fn + Alt +		ESC	Caps Lock will blink in the amount of selected profile number.
		Backspace	Delete current profile value.

- **Fn + Alt** Press for 1 sec to finish recording the current key and choose another key to record.

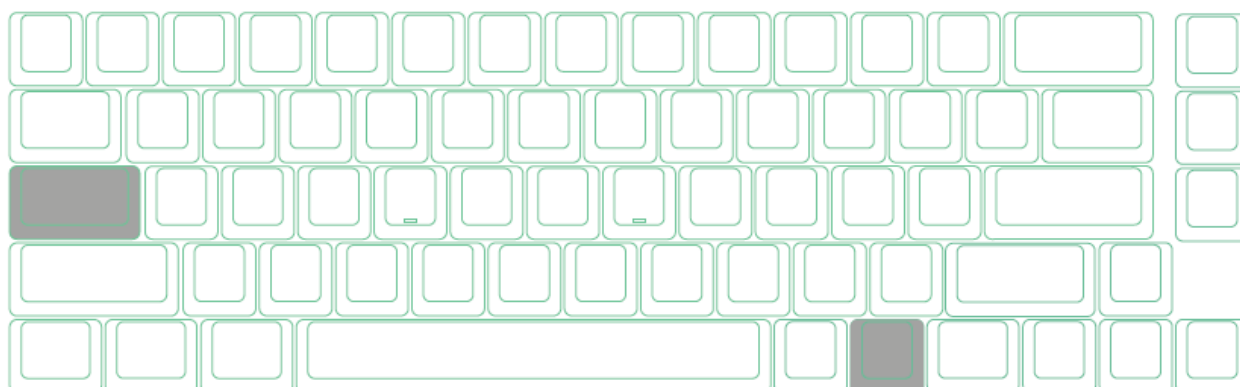
Setting Section

• Ducky SF Macro Configurable Keyboard Layer

- Standard Layer
- Fn Layer
- Fn + Ctrl Layer

• Ducky SF Macro Unsettable Key

- Fn
- Caps Lock



Note:

- Support N keys recorded at the same time, and N keys recorded at the same time when outputting.
- Macro function will be based on the user's typing speed and record it.

Multimedia Function Keys

Fn + Windows key + Keys below

A	Mute	G	Previous playlist	M	Search	S	Mouse cursor up
B	Volume up	H	Calculator	N	Previous page	T	Mouse cursor down
C	Volume down	I	My computer	O	Next page	U	Mouse cursor left
D	Play / Pause	J	Browser	P	Mouse left click	V	Mouse cursor right
E	Stop	K	Mail	Q	Mouse right click	W	Mouse scroll up
F	Next playlist	L	Multimedia	R	Mouse middle click	X	Mouse scroll down

Note: Need to be recorded first before use.

Keyboard Button Function Keys

Fn + Shift+ Keys below			
A	Prompt profile value	N	Backlit mode Wave mode (Default)
B	Profile 1	O	Backlit mode Color Cycle mode
C	Profile 2	P	Backlit mode Rain Drop mode
D	Profile 3	Q	Backlit mode Ripple mode
E	Profile 4	R	Backlit mode Random Reactive mode
F	Profile 5	S	Backlit mode Reactive mode
G	Profile 6	T	Backlit mode 100% Full backlit mode

H	Backlit modes switching	U	Backlit mode Breathe mode
I	Adjust color red	V	Backlit mode Radar mode
J	Adjust color green	W	Backlit mode Backlit OFF
K	Adjust color blue	X	The key “ . ” on number pad (Num_.)
L	Erase all value	Y	Number Lock
M	Color palette		

Note: Need to be recorded first before use.

Windows Common Function Keys

Ctrl + C	Copy select item	Windows + D	Desktop
Ctrl + X	Cut select item	Windows + M	Minimize all windows
Ctrl + V	Paste select item	Windows + L	Lock computer or change user
Ctrl + Z	Undo	Windows + R	Open [Run] window
Ctrl + Y	Redo	Windows + F	Search files or folders
Ctrl + N	Open new file	Windows + ↑	Maximize all windows
Ctrl + O	Open current file	Windows+ ↓	Minimize windows
Ctrl + S	Save file change	Windows + ←	Maximize window to the left side
Ctrl + P	Print file	Windows + →	Maximize window to the right side
Alt + F4	Quit the software	Windows + Home	Minimize all windows other than the one used

Set Up Example

Note: Set the profile to profile 2~6 before setting Macro.

• Example A

- Configure the key “Z”to “Q” output.
 - **Operation method**
 - Press Fn + Alt + Tab for 3 seconds → Press Z → Press down Q → Press Fn + Alt → Press Fn + Alt + Tab for 1 second

• Example B

- To set Z as show “desktop” (under Windows system)
 - **Operation method**
 - Press Fn + Alt + Tab for 3 seconds → Press Z → Press Windows key + D → Press Fn + Alt → Press Fn + Alt + Tab for 1 second

• Example C

- To set Fn + Ctrl + M as “mute volume”
 - **Operation method**
 - Press Fn + Alt + Tab for 3 seconds → Press Fn + Ctrl + M → Press Fn + Windows key + A → Press Fn + Alt →
 - Press Fn + Alt + Tab for 1 second

• Example D

- To set Fn + Ctrl + Q as “Reactive mode”
 - **Operation method**
 - Press Fn + Alt + Tab for 3 seconds → Press Fn + Ctrl + Q → Press Fn + Shift + S → Press Fn + Alt → Press Fn + Alt + Tab for 1 second

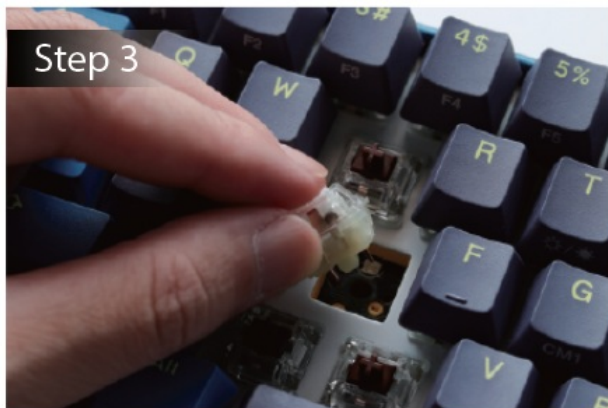
Hot-swap

Set-up Example

1. Use key puller to pull out the key caps
2. Use switch puller to pull out the switches



3. Align switch pins with the holes
4. Gently push the switch in



Ducky One 3 SF

DISCLAIMERS

- When using a Hot-swap model, make sure to support the hotswap socket with your finger when inserting the switch to ensure it does not damage the PCB from excessive force.
- Any liquid damage to the keyboard will void warranty.
- Modifications to the keyboard will void warranty.

Warranty is 1 year from date of purchase via our Official Vendors

<https://www.duckychannel.com.tw/en/location/global> Please contact the vendor you purchased from for RMA procedures. www.duckychannel.com.tw.

Documents / Resources



[Ducky One 3 SF RGB Mechanical Keyboard \[pdf\]](#) User Manual

Ducky_One3_SF_usermanual_V10_20250430, One 3 SF RGB Mechanical Keyboard, One 3 SF, RGB Mechanical Keyboard, Mechanical Keyboard , Keyboard

References

- [User Manual](#)

📁 Ducky

🔖 Ducky, Ducky_One3_SF_usermanual_V10_20250430, Keyboard, Mechanical keyboard, One 3 SF, One 3 SF RGB Mechanical Keyboard, RGB Mechanical Keyboard

Leave a comment

Your email address will not be published. Required fields are marked *

Comment *

Name

Email

Website

☐ Save my name, email, and website in this browser for the next time I comment.

[Post Comment](#)

Search:

[Search](#)

[Manuals+](#) | [Upload](#) | [Deep Search](#) | [Privacy Policy](#) | [@manuals.plus](#) | [YouTube](#)

This website is an independent publication and is neither affiliated with nor endorsed by any of the trademark owners. The "Bluetooth®" word mark and logos are registered trademarks owned by Bluetooth SIG, Inc. The "Wi-Fi®" word mark and logos are registered trademarks owned by the Wi-Fi Alliance. Any use of these marks on this website does not imply any affiliation with or endorsement.