



DTC SOL8SDR2x1W-P Software Defined Radio User Guide

[Home](#) » [DTC](#) » DTC SOL8SDR2x1W-P Software Defined Radio User Guide 

DTC SOL8SDR2x1W-P Software Defined Radio User Guide



Contents

- [1 Overview](#)
- [2 Connections](#)
- [3 Initial Communications](#)
- [4 Basic Mesh Setup](#)
- [5 Documents / Resources](#)
- [6 Related Posts](#)

Overview

This quick start guide provides instructions and diagrams describing how to quickly connect and configure the SOL8SDR2x1W-P device to join a Mesh network.

Note: If configuring as a SOL-TX or SOL-RX, please refer to the relevant user guides.

Supporting software applications and detailed user guides can be downloaded from DTC's WatchDox facility. Please contact the DTC support team:

- **Phone US:** +1 571 563 7077
- **Phone UK:** +44 1489 884 550
- **Email US:** us.technical.support@domotactical.com (no restricted content)
- **Email ROW:** uk.technical.support@domotactical.com (no restricted content)

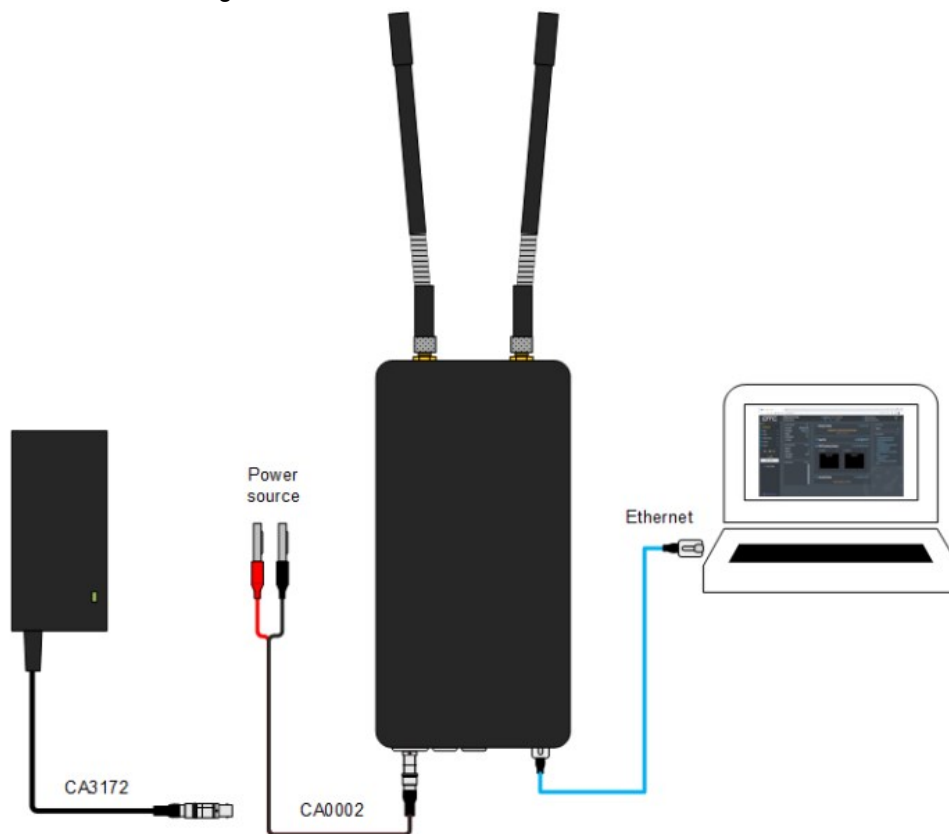
Connections

The minimum connections required for an SDR2x1W-P to join a Mesh network are power and antennas. An Ethernet connection to a PC is required for initial configuration.

Note: CA3172 PSU or CA0002 connected to an 8-18VDC power source can be used as power options.

Depending on how the SDR2x1W-P is to be deployed, a video source, audio headset, or serial data connections may be attached for additional functionality. Please refer to the user guides for details.

Note: The cables in the image below are provided for illustration, a full list of cable options can be found in the datasheet or user guide.

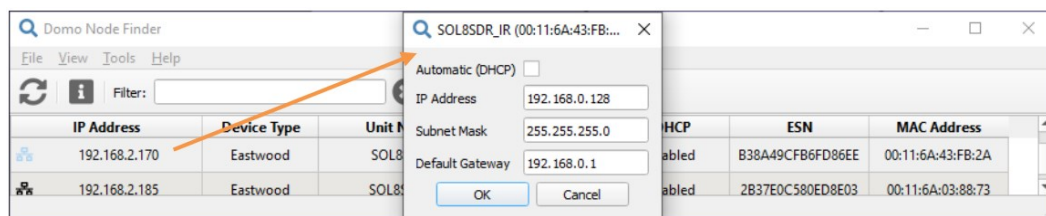


Initial Communications

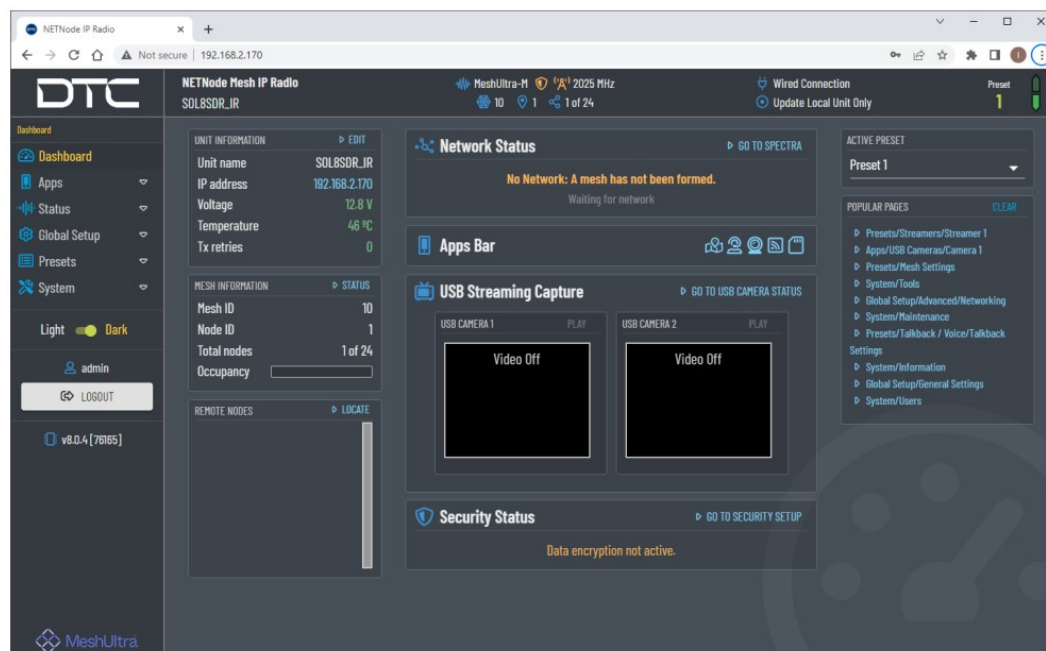
DTC's Node Finder application can be used to identify all DTC device Ethernet IP addresses connected on a network.

The default setting requires the device to be connected by Ethernet to a DHCP server which will automatically allocate an IP address. If a DHCP server is not available or the SDR is connected directly to a PC, the SDR and PC IPv4 address will need to be configured to be on the same subnet.

Right-click the SDR on Node Finder to reconfigure the IP settings as needed.

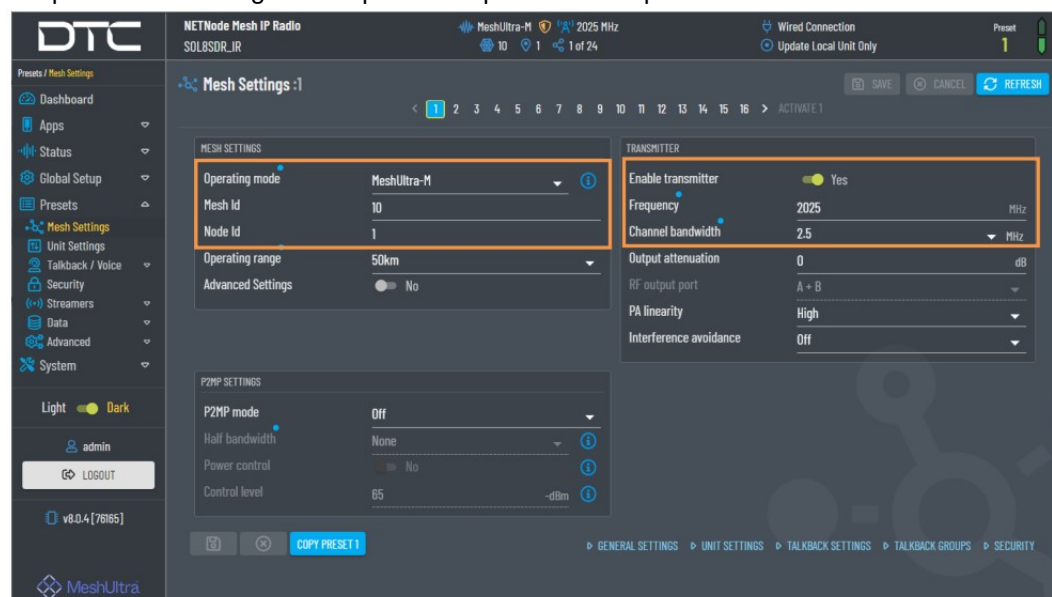


When the SDR IP address has been established, open a web browser, and enter it in the address bar. On authentication, leave the Username blank and enter the Password as Eastwood.



Basic Mesh Setup

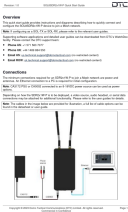
Mesh settings must be configured to join a network. In the web user interface Presets>Mesh Settings page, the settings highlighted below must be the same for all nodes in a network except the Node Id which should be unique. These settings will depend on operational requirements.



When the SDR has been configured, the Ethernet connection to the PC can remain if it is to be the control node for the Mesh network, otherwise, disconnect to prevent network looping.



Documents / Resources

 The thumbnail shows the cover page of the user guide. It features the DTC logo at the top right, a title section, and a diagram of the hardware setup at the bottom. The diagram shows a laptop connected to a radio unit via a cable, with an antenna attached to the radio.	<p>DTC SOL8SDR2x1W-P Software Defined Radio [pdf] User Guide</p> <p>SDR-P 2x1W, SOL8SDR2x1W-P Software Defined Radio, SOL8SDR2x1W-P, SOL8SDR2x1W-P Defined Radio, Software Defined Radio, Software Radio, Defined Radio, Radio</p>
---	--