



Contents [[hide](#)]

- [1 Dsucot Mira Extendable Table](#)
- [2 Chair Assembly Instructions](#)
- [3 Specifications](#)
- [4 Accessories](#)
- [5 Assembly Instructions](#)
- [6 FAQ](#)
- [7 Documents / Resources](#)
 - [7.1 References](#)

Dsucot

Dsucot Mira Extendable Table

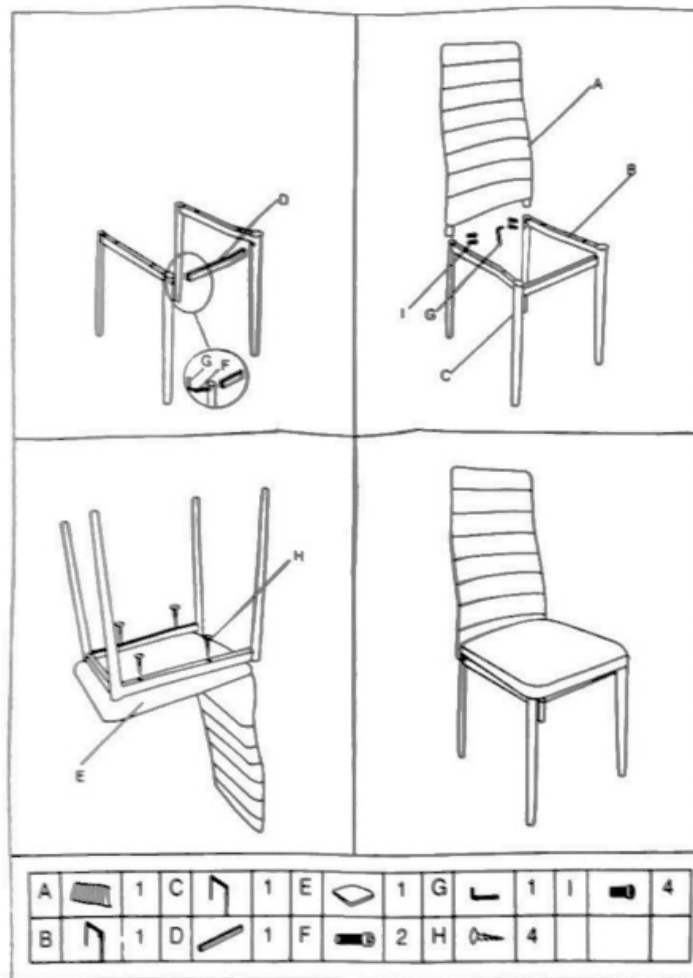


Chair Assembly Instructions

Assemble the chair frame using parts A, B, C, D, E, F, G, H, and I as shown in the diagrams.

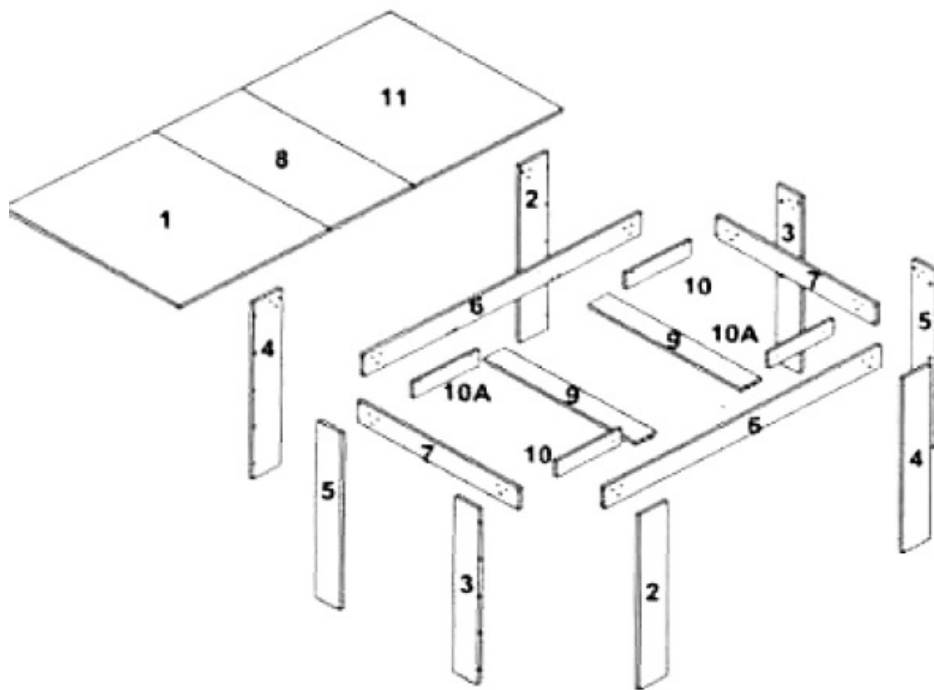
Specifications

Part	Quantity
A	1
B	1
C	1
D	1
E	1
F	1
G	1
H	4
I	4



Accessories

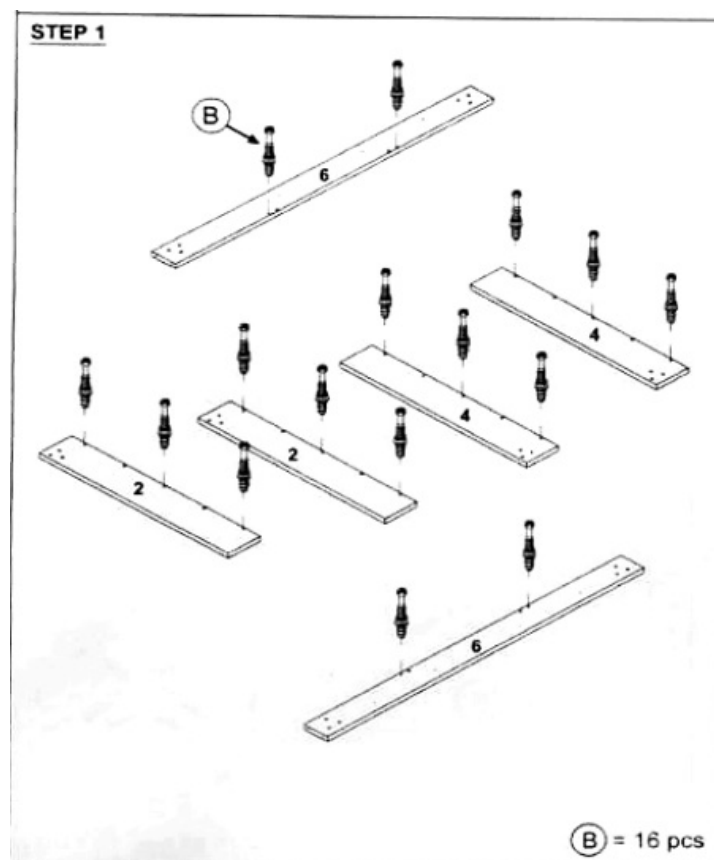
ACCESSORIES			QTY
Ⓐ	DOWEL Ø8 X 30mm		12 pcs
Ⓑ	CAM BOLT		16 pcs
Ⓒ	CAM NUT		16 pcs
Ⓓ	JCBC SCREW M6 X 30mm		24 pcs
Ⓔ	C/B SCREW M4 X 45mm		8 pcs
Ⓕ	C/B SCREW M3.5 X 16mm		56 pcs
Ⓖ	FULL EXTENSION SLIDE 12"		4 sets
Ⓗ	PVC 2 HOLE L-BRACKET		8 pcs
Ⓘ	CATCH CLIP		4 pcs
Ⓙ	GLIDER WITH NAILS 5/8"		16 pcs
Ⓚ	ALLEN KEY M4		1 pcs



Assembly Instructions

Step 1

Insert cam bolts (B) into the designated holes on the wooden panels labeled 2, 4, and 6.



Caution

Material use: Laminated particle board and frame. To use soft dry cloth. Do not use

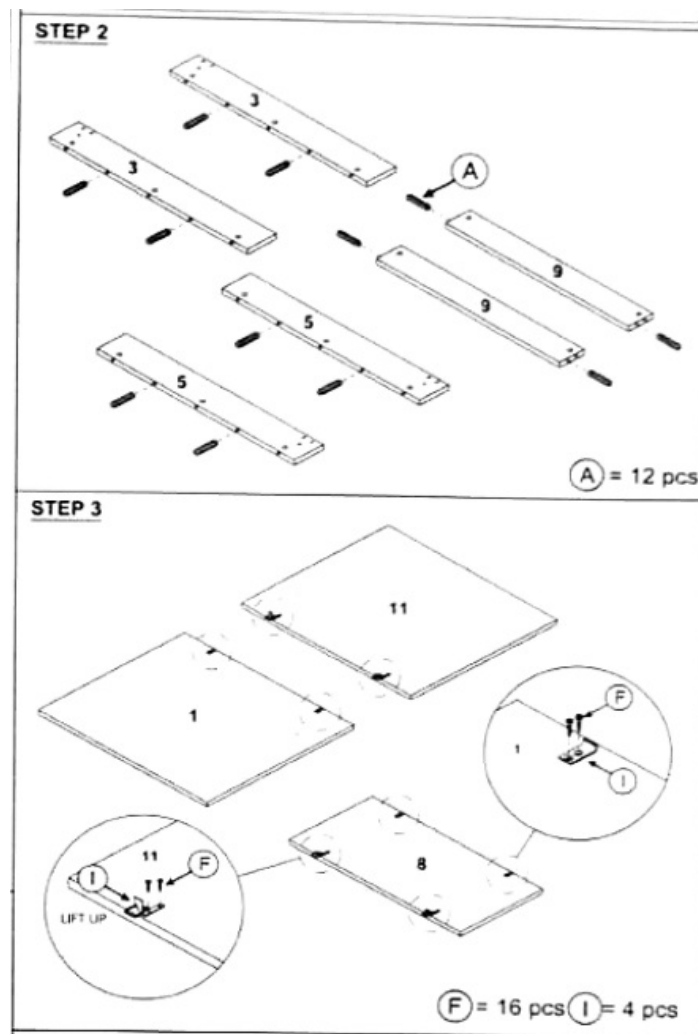
detergent or chemical. Avoid contact with water and direct sunlight. To be assembled on a soft, dry, clean, and smooth surface.

Step 2

Attach dowels (A) into the panels labeled 3, 5, and 9. Use 12 pcs of dowels.

Step 3

Attach panels 1, 8, and 11 using cam nuts (F) and catch clips (I). Use 16 pcs of cam nuts and 4 pcs of catch clips.

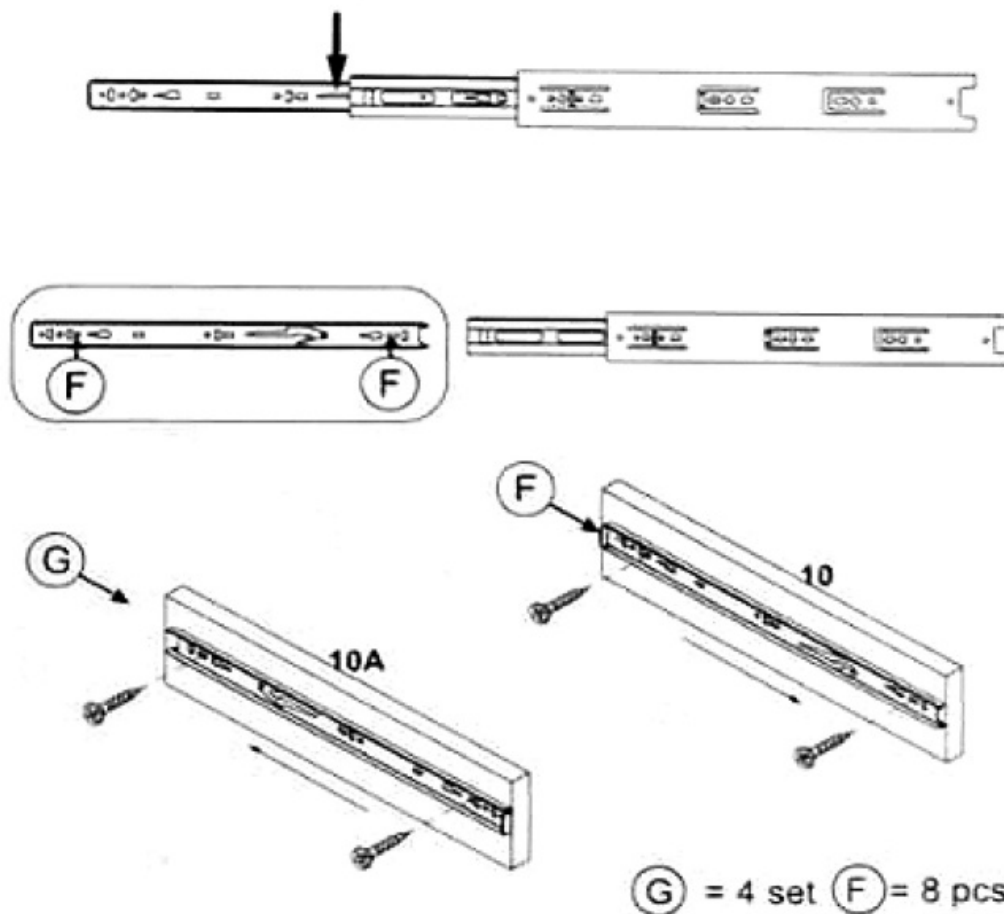


Step 4

Push the lever down to detach the end drawer slide. Use full extension slides (G) and screws (F).

STEP 4

PUSH THE LEVER DOWN TO DETACH
END DRAWER SLIDE.

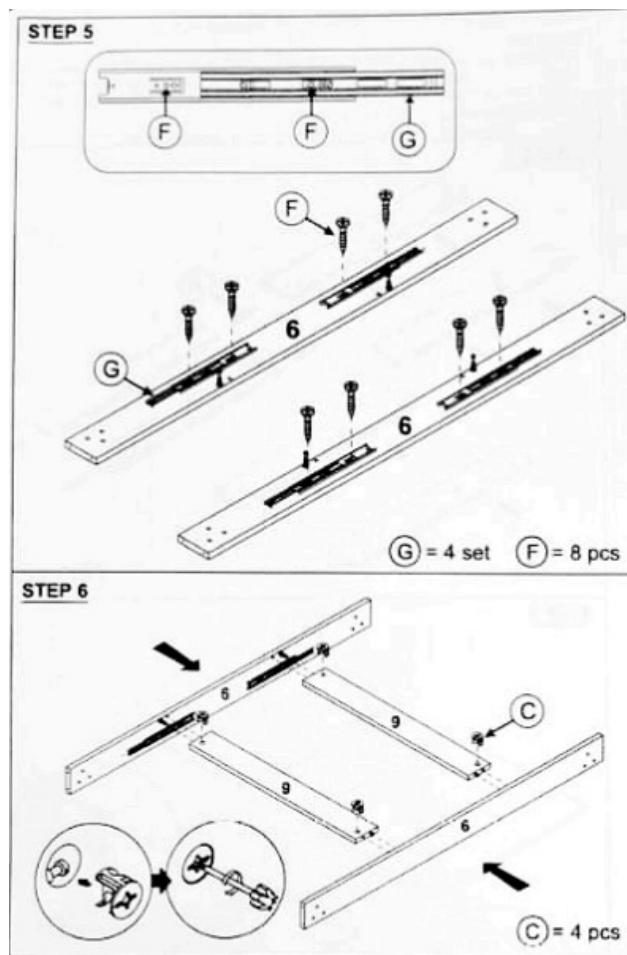


Step 5

Attach full extension slides (G) to the panels labeled 6 using screws (F).

Step 6

Connect panels 6 and 9 using cam nuts (C). Use 4 pcs of cam nuts.

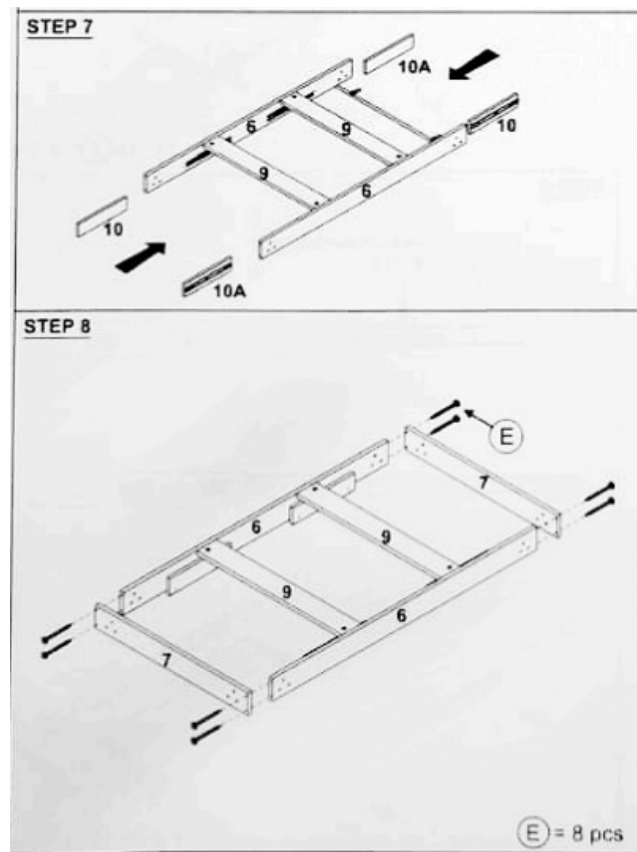


Step 7

Assemble the frame using panels 6, 9, 10, and 10A.

Step 8

Secure the frame with screws (E).

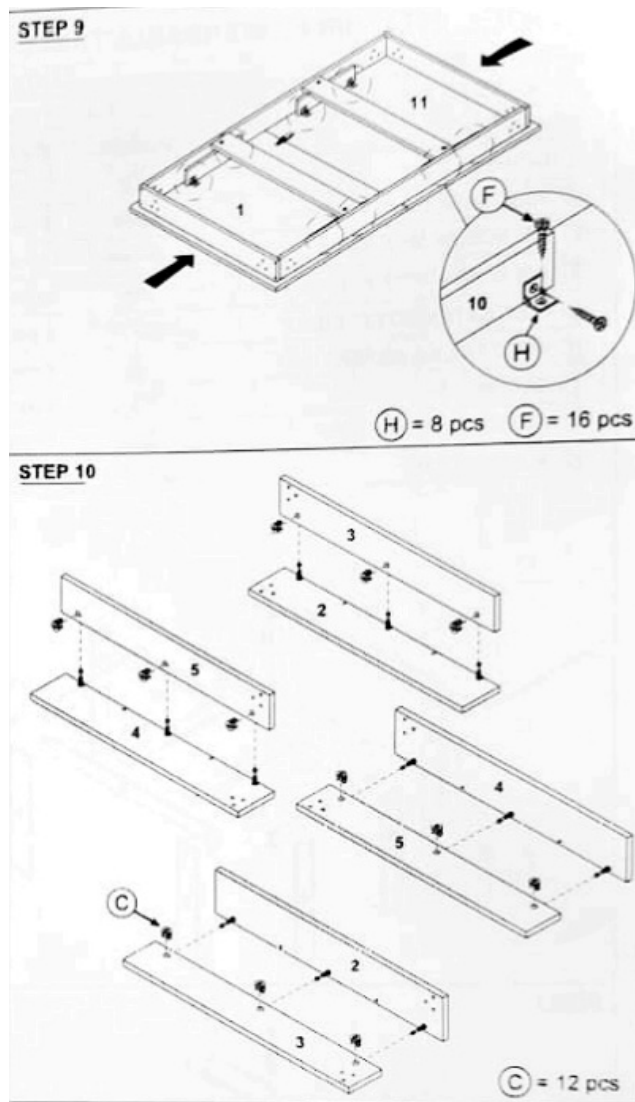


Step 9

Attach panel 11 to the frame using L-brackets (H) and screws (F).

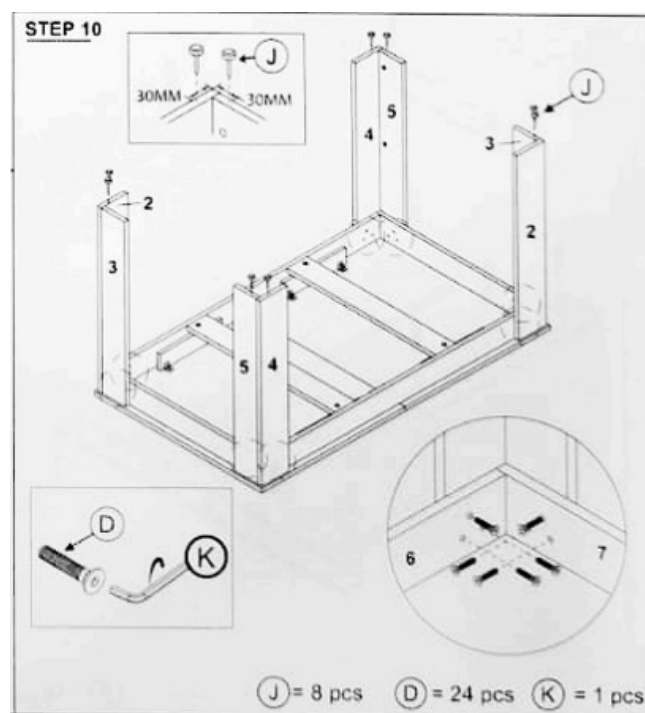
Step 10

Attach panels 2, 3, 4, and 5 to the frame using cam nuts (C) and gliders (J).



Step 11

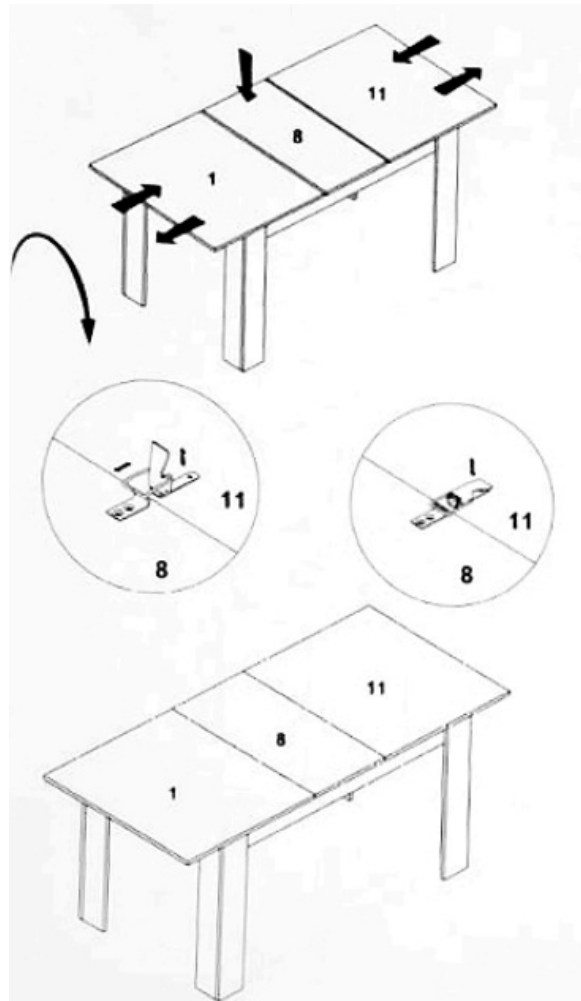
Secure the entire assembly with JCBC screws (D) and the Allen key (K).



Step 12

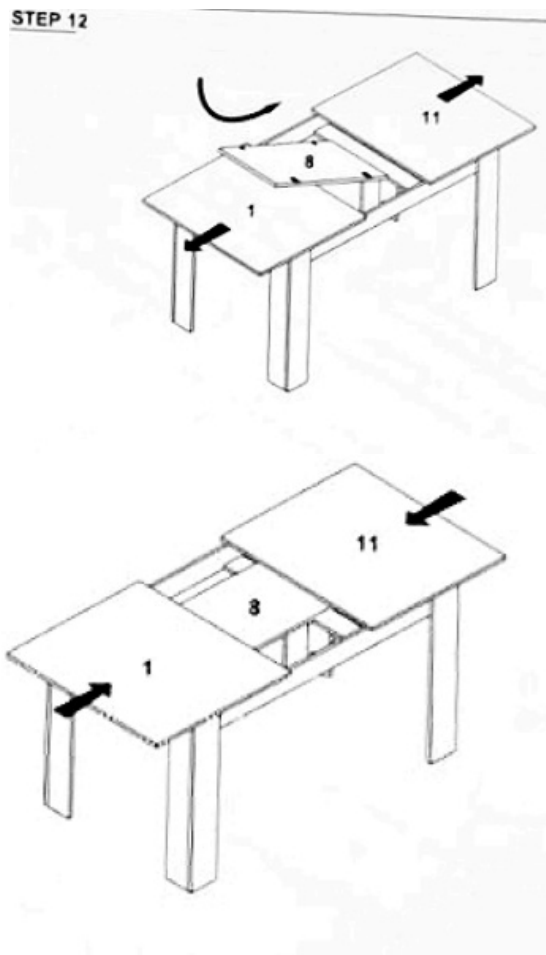
Extend Table Steps:

1. Push panel 1 and panel 11 outward.
2. Place panel 8 between panel 1 and 11.
3. Push panel 1 and panel 11 inward.
4. Secure the panels by locking the clip together.



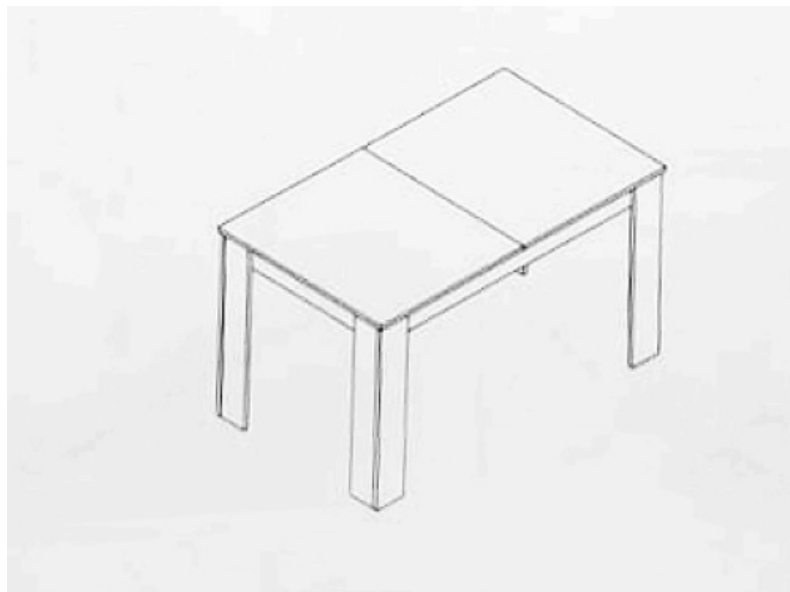
Close Table Steps:

1. Unlock the clip by pulling the metal clip.
2. Push panel 1 and 11 outward.
3. Insert panel 8 inside the table.
4. Push back panel 1 and 11 inward.
5. Secure the panels by locking the clip together.



Complete

The table assembly is complete.



FAQ

- **What tools are required for assembly?**

An Allen key (included) is required for assembly.

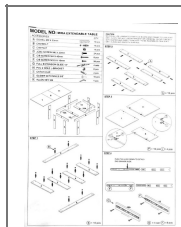
- **Can the table be used outdoors?**

No, avoid contact with water and direct sunlight.

- **How do I extend the table?**

Follow the extend table steps provided in the instructions.

Documents / Resources



[Dsucot Mira Extendable Table \[pdf\]](#) User Guide

Miramye_C05, Mira Extendable Table, Mira, Extendable Table, Table

References

- [User Manual](#)

🔍 Dsucot, Extendable Table, Mira, Mira Extendable Table, Miramye_C05,

📁 Dsucot table

Leave a comment

Your email address will not be published. Required fields are marked *

Comment *

Name

Email

Website

☐ Save my name, email, and website in this browser for the next time I comment.

Post Comment

Search:

e.g. whirlpool wrf535swhz

Search

[Manuals+](#) | [Upload](#) | [Deep Search](#) | [Privacy Policy](#) | [@manuals.plus](#) | [YouTube](#)

This website is an independent publication and is neither affiliated with nor endorsed by any of the trademark owners. The "Bluetooth®" word mark and logos are registered trademarks owned by Bluetooth SIG, Inc. The "Wi-Fi®" word mark and logos are registered trademarks owned by the Wi-Fi Alliance. Any use of these marks on this website does not imply any affiliation with or endorsement.