



DSC PG Series Wireless PowerG High Security Mirror Detector Installation Guide

[Home](#) » [DSC](#) » DSC PG Series Wireless PowerG High Security Mirror Detector Installation Guide 

Contents

- [1 DSC PG Series Wireless PowerG High Security Mirror Detector](#)
- [2 Features](#)
- [3 Device Setup](#)
- [4 Installing the Battery](#)
- [5 Enroll the Device into the System](#)
- [6 Mounting](#)
- [7 Configuration](#)
- [8 Event Indications](#)
- [9 Specifications](#)
- [10 ELECTRICAL](#)
- [11 FUNCTIONAL](#)
- [12 ACCESSORIES](#)
- [13 UL/ULC Notes](#)
- [14 FCC COMPLIANCE STATEMENT](#)
- [15 Limited Warranty](#)
- [16 Documents / Resources](#)
- [17 Related Posts](#)





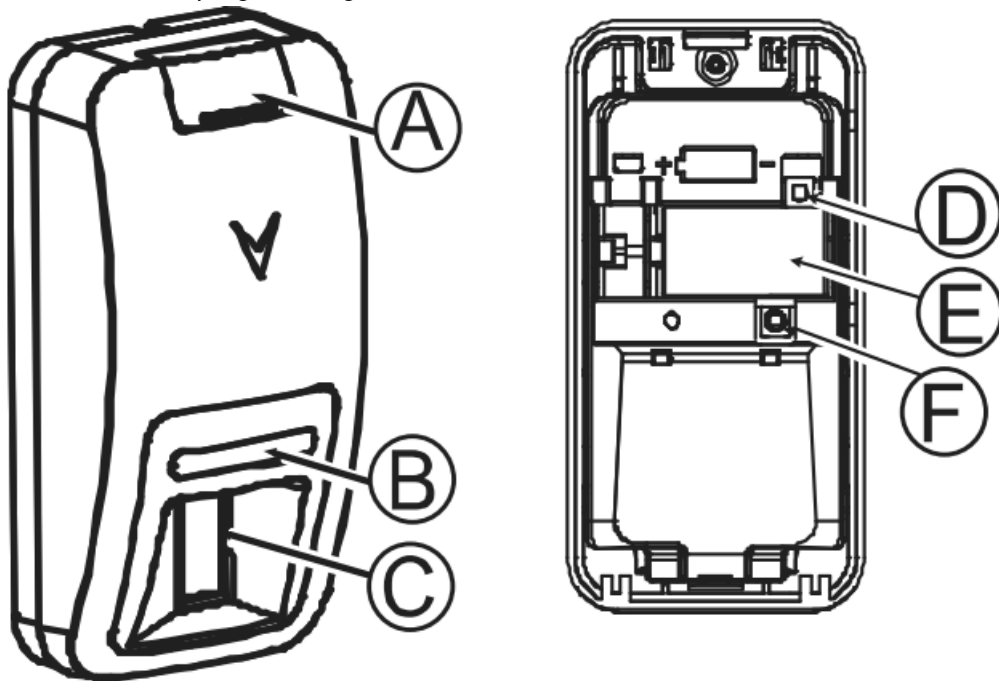
Features

The PGx974(P) (pet-immune) are 2-way, microprocessor-controlled, wireless digital following feature:

- Built-in link quality indicators reduce installation time by eliminating the need for the installer to physically approach the control panel.
- Adaptive Active Infra-Red Anti-Masking technology providing the most advanced reliable protection against intentional masking attempts (patent pending).
- Includes a fully supervised PowerG transceiver.
- Incorporates patent pending black mirrors for extremely high white light immunity.
- Advanced elliptical / parabolic mirror technology (patented).
- V-slot® optic technology (patented) for improved robustness, anti-vandalism and for very high reliability.
- Creep zone protection.
- PGx974P can distinguish between human beings and pets weighing up to 18 kg (40 lb).
- The advanced True Motion Recognition™ algorithm (patented) distinguishes between the true motion of an intruder and any other disturbances which may cause false alarms.
- No vertical adjustment is needed.
- Motion event counter determines whether 1 or 2 consecutive motion events will trigger an alarm.
- Automatic termination of walk-test after 15 minutes.
- Microprocessor-controlled temperature compensation.
- Sealed chamber protects the optical system.
- Front and back tamper protection.
- Self-test.

Device Setup

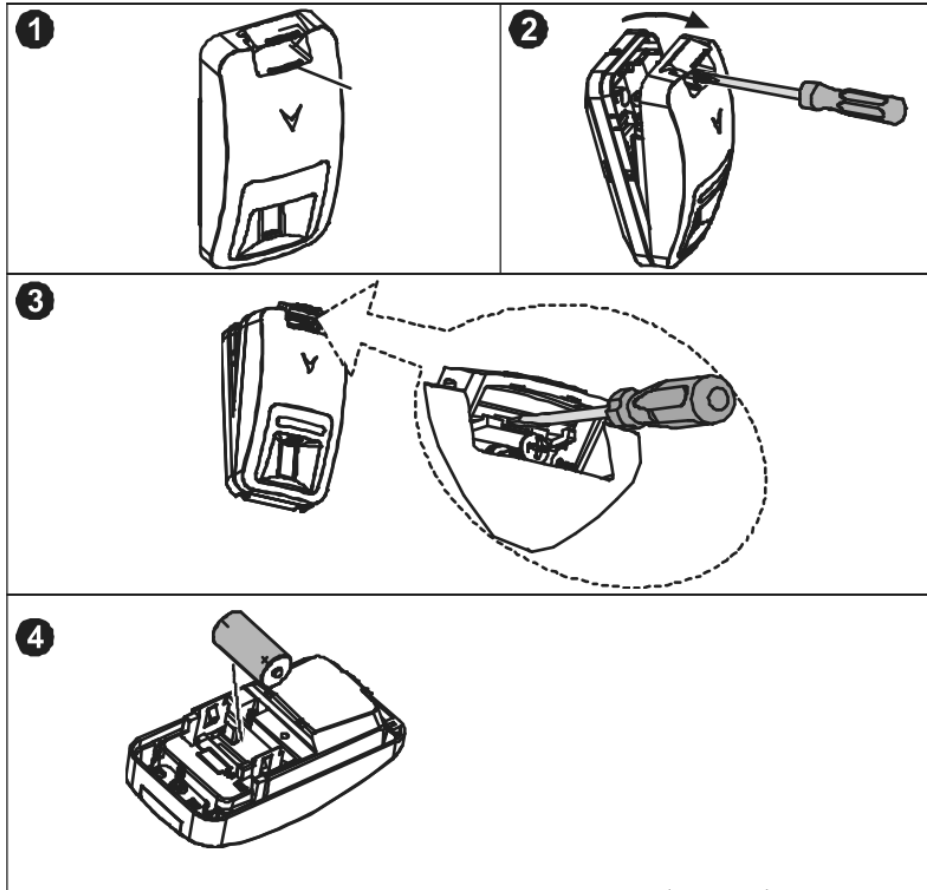
Note: To ensure the continued operation of all wireless devices after performing a system default, a global upload of all wireless programming via DLS is recommended before defaulting the system. After completing the system default, download the wireless programming.



Legend

- A. Screw cover
- B. LED
- C. PTR optical window
- D. Enroll button (use a screwdriver to press the recessed but-ton)
- E. Battery
- F. Tamper switch
- G Break-away base segment (shaded)
- H. Mounting height
- I. Coverage range
- J. Horizontal view
- K. Vertical view
- X. Lower surface (with downward tilt)
- Y. Upper surface (without downward tilt)

Installing the Battery



Caution! Risk of explosion if battery is replaced by an incorrect type. Dispose of used batteries according to the manufacturer's instructions and according to local rules and regulations. Batteries are to be replaced by service persons only.

1. On the indicated location, lift the screw cover upward using your thumb.
2. Release the screw and open the cover in the direction shown by the arrow.
3. Insert a screwdriver into the slot and then push inward to separate the base from the cover.
4. Insert battery while observing polarity.

Note: When manually programming wireless devices, if a device has been powered up for more than 48 hours it cannot be enrolled into the system until the device has been tampered and restored. When programming the panel using the Quick Enroll procedure follow the steps detailed in Enroll the Device into the System.

Note: After restoring a low battery trouble the system may take up to 5 minutes to clear the trouble.

Enroll the Device into the System

To quick enroll:

1. On a keypad press [*] [8] [Installer Code] [804] [000].
2. Press and hold the device enroll button until the LED lights steady and then release the enroll button while the LED is still lit. A confirmation message then appears on the keypad.
3. Press [*] key to confirm ID.
4. Enter [3 digit zone #].
5. Enter [3 digit zone type].

6. Enter [1 digit partition #] for all desired partitions and press [#]. If using an LCD keypad you can scroll to the desired partitions and press [*] to toggle the partition.
7. On an LCD keypad enter the label by using word library.

To pre-enroll:

1. Remotely configure the unique ID number into the system. For more information see the HSM2HOST manual.
2. When on-site, press the device enroll button.

Note: If the wireless device has been powered for more than 48 hours without being enrolled, tamper and restore the device to enroll it.

Perform a Placement Test

Before permanently mounting any wireless device, temporarily mount the device and perform a Placement test.

1. Tamper the device by removing the cover.
2. Restore the tamper. The device now enters Placement test mode for 15 minutes.
3. Trip the device and the red LED blinks once to identify that a signal is being sent to the receiver and then blinks three times to identify the signal strength. To perform a walk test, walk across the far end of coverage pattern in both directions. The following table indicates the received signal strength indication.

LED Response	Signal Strength
Green LED blinks	STRONG
Orange LED blinks	GOOD
Red LED blinks	POOR
No blinks	No communication

IMPORTANT! Only GOOD or STRONG signal strengths are acceptable. If you receive a POOR signal from the device, relocate it and re-test until a GOOD or STRONG signal is received.

Note: For UL/ULC installations, only STRONG signal levels are acceptable. After installation verify the product functionality in conjunction with the compatible receivers HSM2HOST9, HS2LCDRF(P)9, HS21CNRFP(P)9 and PG9920.

Note: For detailed Placement instructions refer to the control panel Reference Guide.

Note: Perform a walk test of the coverage area at least once a year to ensure that the detector is working correctly.

Mounting

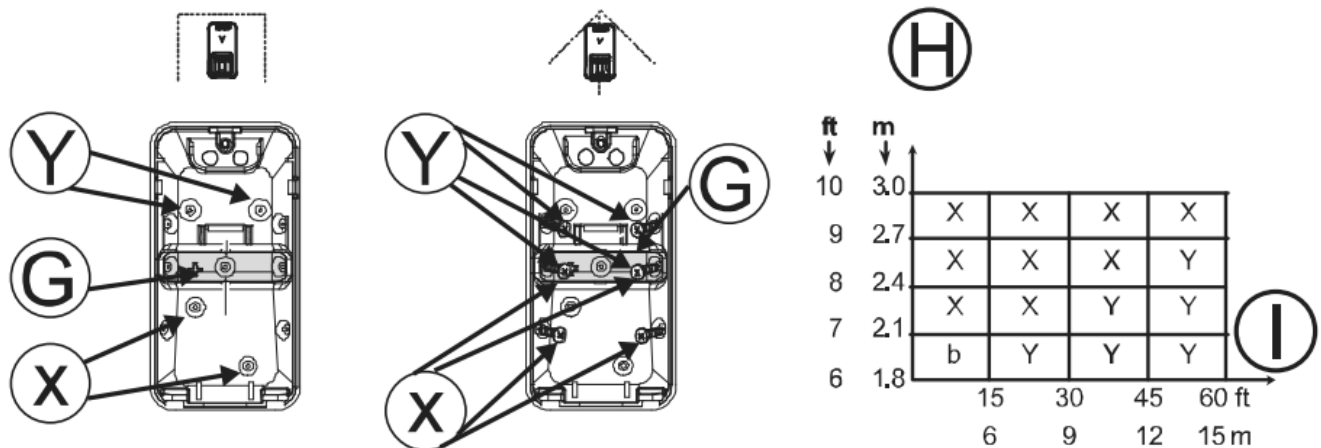
Note: Mount the detector so that its orientation is perpendicular to the expected intrusion path. For the desired detector's range and height, use mounting holes x or y, as specified in the table below.

Note: To be installed by service persons in non-hazardous locations only.

Use the following as a guide for locating a suitable mounting location:

- Keep away from heat sources.
- Do not expose to air drafts.
- Do not install outdoors.
- Avoid direct sunshine.
- Keep wiring away from power cables.

- Do not install behind partitions.
- Mount on solid stable surface.



Caution! The back tamper switch will not protect the unit unless the break-away base segment is secured to the wall with at least one screw.

Configuration

To enter the wireless configuration section enter [804][000].

Device Toggles

[001][01] **Alarm LED -Default [Y]**

Enables the devices LED to activate when an alarm event occurs.

[001][04] **Supervision – Default [Y]**

Enables supervision of the device.

Selections

[003 Hightraffic Shutdown – Default [01]

Activating this feature helps conserve battery power when the system is disarmed by configuring a reporting timer. When motion is detected, the device transmits an alarm to the receiver and will not report any further events until the timer expires. Any motion detected during the configured period will be reported once the timer expires. No Delay causes the device to report an alarm each time the detector is tripped.

[01] Detector Dis- [02] No Delay (while disarmed) [03] 5 second delay [04] 15 second delay

[05] 30 second delay [06] 1m delay

[07] 5m delay [08] 10m delay [09] 20m delay [10] 60m delay

[006 Event counter – Default [002]

Alarm activates after a configured number of events have been detected.

Key in activities

001- 255

Event Indications

LED Indications	Event
Red LED blinks	Stabilization (warm-up 120 sec)
Red LED ON 0.2 sec.	Tamper open / close
Red on 2 sec.	Intruder alarm
Yellow LED on	AM detection – Diagnostic mode
Yellow LED blinks slowly (0.2 sec. ON, 30 sec. OFF)	AM detection – Normal mode

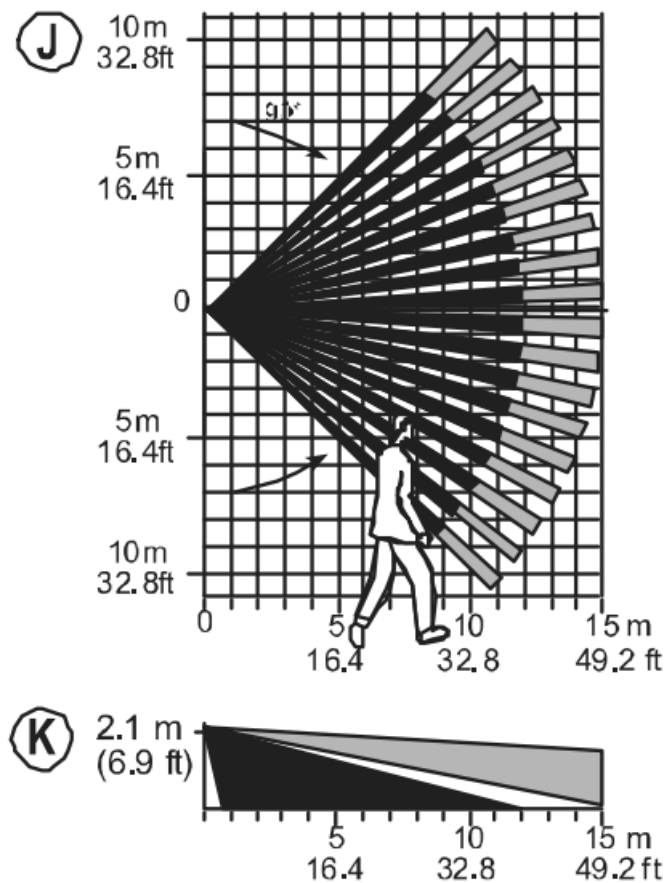
LED Indications	Event
Yellow and red LED blink simultaneously (0.2 sec. ON [both], 0.2 sec. OFF)	Self-test failure – Diagnostic mode
Yellow and red LED blink simultaneously slowly (0.2 sec. ON [both], 30 sec. OFF)	Self-test failure – Normal mode

Specifications

GENERAL

Detector Type: Dual element low-noise pyroelectric sensor Lens Data

No. of Beam Elements: $18 \times 3 = 54$ far parabolic mirror segments



- **Max. Coverage:** 15 m (49 ft) | 90° 25 m (82 ft) x 2.5 m
- **Pet Immunity (only):** Up to 38 kg (85 lb)

ELECTRICAL

- **Internal Battery:** 3V Lithium battery, type CR-123A (optionally can be used type CR-17450)
Note: For UL installations use Gold Peak (GP) only. Use only the above battery type.
- **Nominal Battery Capacity:** 1450 mA/h (2400mA/h for optional CR! 7450)
- **Low Battery Threshold:** 2.45 V
- **Battery Life (for typical use):** 7 years (not tested by UL/ULC)

FUNCTIONAL

- **True Motion Event Verification:** 2 remote selections – 1 (OFF) or 2 (ON) motion events
- **Alarm Period:** 2 seconds

WIRELESS

- **Frequency Band (MHz):** CE Listed PG4974: 433MHz; CE/ EN listed PG8974: 868MHz; FCC/IC/UL/ULC listed PG9974: 912-919MHz
- **Communication Protocol:** PowerG
- **Supervision:** Signaling at 4-min. intervals
- **Tamper Alert:** Reported when a tamper event occurs and in any subsequent message, until the tamper switch is restored

MOUNTING

- **Height:** 1.8 – 3.0 m (6 – 10 ft).
- **Installation Options:** Surface or corner

ACCESSORIES

- **PGBRACKET-1:** Surface mounted swivel bracket, adjustable 30° down and 45° left/45° right.
- **PGBRACKET-2:** PGBRACKET-1 with a corner adapter
- **PGBRACKET-3:** PGBRACKET-1 with a ceiling adapter Note: UL did not evaluate the product with the use of brackets.

ENVIRONMENTAL

- **RFI Protection:** >20 V/m up to 2000 MHz, excluding inband frequencies
- **Temperature range:** -10°C to +55°C (UL/ULC only verified the range 0°C-49°C)
- **Relative Humidity:** up to max. 93%RH, non-condensing

PHYSICAL

- **Size (H x WxD):** 115 x 60 x48 mm (4-1/2 x2-5/16 x 1-15/ 16")
- **Weight (with battery):** 90 g (3 oz).
- **Color:** White

COMPATIBLE RECEIVERS

- **433MHz Band:** HSM2HOST4; HS2LCDRF(P)4;HS21CNRFP(P)4; PG4920
- **868MHz Band:** HSM2HOST8; HS2LCDRF(P)8; HS21CNRFP(P)8;PG8920
- **912-919MHz Band:** HSM2HOST9; HS2LCDRF(P)9; HS21CNRFP(P)9; PG9920

Note: Only devices operating in band 912-919MHz are UL/ ULC listed.

UL/ULC Notes

Only model PG9974 operating in the frequency band 912-919MHz is UL/ULC listed. The PG9974 has been listed by UL for commercial and residential burglary applications and by ULC for residential burglary applications in accordance with the requirements in the Standards UL 639 and ULC-S306 for Intrusion Detection Units. For UL/ULC installations use these devices only in conjunction with compatible DSC wireless receivers: HSM2HOST9, HS2LCDRF(P)9, HS21CNRFP(P)9 and PG9920. After installation verify the product functionality in conjunction with the compatible receiver used.

C E Europe: The PG8974 and PG4974 are compliant with the RITE DNV (DET NORSKE VERITAS) to the following standards: EN50131-2-2, EN50131-1 GRADE 2, CLASS 11, EN50131-6 Type C. DNV (DET NORSKE VERITAS) has certified only the 868 MHz variant of this product. According to EN 50131-1:2006 and A1:2009, this equipment can be applied in installed systems up to and including Security Grade 2, Environmental Class IL UK: The PG8974 is suitable for use in systems installed to conform to PD6662:2010 at Grade 2 and environmental class 2. BS8243 The Power G peripheral devices have two-way communication functionality, providing additional benefits as described in the technical brochure. This functionality has not been tested to comply with the

respective technical requirements and should therefore be considered outside the scope of the product's certification

FCC COMPLIANCE STATEMENT

WARNING! Changes or modifications to this unit not expressly approved by the party responsible for compliance could void the user's authority to operate the equipment.

This device has been tested and found to comply with the limits for a Class B digital device, pursuant to Part 15 of the FCC Rules. These limits are designed to provide reasonable protection against harmful interference in residential installations. This equipment generates uses and can radiate radio frequency energy and, if not installed and used in accordance with the instructions, may cause harmful interference to radio and television reception.

However, there is no guarantee that interference will not occur in a particular installation. If this device does cause such interference, which can be verified by turning the device off and on, the user is encouraged to eliminate the interference by one or more of the following measures:

- Re-orient or re-locate the receiving antenna.
- Increase the distance between the device and the receiver.
- Connect the device to an outlet on a circuit different from the one that supplies power to the receiver.
- Consult the dealer or an experienced radio/TV technician.

This equipment complies with FCC and IC RF radiation exposure limits set forth for an uncontrolled environment. This device complies with FCC Rules Part 15 and with Industry Canada licence-exempt RSS standard(s). Operation is subject to the following two conditions: (1) This device may not cause harmful interference, and (2) this device must accept any interference that may be received or that may cause undesired operation.

Limited Warranty

Digital Security Controls warrants that for a period of 12 months from the date of purchase, the product shall be free of defects in materials and workmanship under normal use and that in fulfillment of any breach of such warranty, Digital Security Controls shall, at its option, repair or replace the defective equipment upon return of the equipment to its repair depot. This warranty applies only to defects in parts and workmanship and not to damage incurred in shipping or handling, or damage due to causes beyond the control of Digital Security Controls such as lightning, excessive voltage, mechanical shock, water damage, or damage arising out of abuse, alteration or improper application of the equipment.

The foregoing warranty shall apply only to the original buyer, and is and shall be in lieu of any and all other warranties, whether expressed or implied and of all other obligations or liabilities on the part of Digital Security Controls. Digital Security Controls neither assumes responsibility for, nor authorizes any other person purporting to act on its behalf to modify or to change this warranty, nor to assume for it any other warranty or liability concerning this product.

In no event shall Digital Security Controls be liable for any direct, indirect or consequential damages, loss of anticipated profits, loss of time or any other losses incurred by the buyer in connection with the purchase, installation or operation or failure of this product.

Motion detectors can only detect motion within the designated area shown in their respective installation instructions. They cannot discriminate between intruders and intended occupants. Motion detectors do not provide volumetric area protection. They have multiple beams of detection and motion can only be detected in unobstructed areas covered by the beams. They cannot detect motion which occurs behind walls, ceilings, floor, closed doors, glass partitions, glass doors or windows. Any type of tampering whether intentional or unintentional such as masking, painting, or spraying of any material on the lenses, mirrors, windows or any other part of the detection system will impair its proper operation. Passive infrared motion detectors operate by sensing changes in temperature. However their effectiveness can be reduced when the ambient temperature rises near or above body temperature or if there are intentional or unintentional sources of heat in or near the detection area. Some of these heat sources could be heaters, radiators, stoves, barbecues, fireplaces, sunlight, steam vents, lighting and so on.

Tuning: Digital Security Controls recommends that the entire system be completely tested on a regular basis.

However, despite frequent testing, and due to, but not limited to, criminal tampering or electrical disruption, it is possible for this product to fail to perform as expected.

Important Information: Changes or modifications not expressly approved by Digital Security Controls could void the user's authority to operate this equipment

IMPORTANT -READ CAREFULLY: DSC Software purchased with or without Products and Components is copyrighted and is purchased under the following license terms:

- This End-User License Agreement ("EULA") is a legal agreement between You (the company, individual or entity who acquired the Software and any related Hardware) and Digital Security Controls, a division of Tyco Safety Products Canada Ltd. ("DSC"), the manufacturer of the integrated security systems and the developer of the software and any related products or components ("HARDWARE") which You acquired.
- If the DSC software product ("SOFTWARE PRODUCT" or "SOFTWARE") is intended to be accompanied by HARDWARE, and is NOT accompanied by new HARDWARE, You may not use, copy or install the SOFTWARE PRODUCT. The SOFTWARE PRODUCT includes computer software, and may include associated media, printed materials, and "online" or electronic documentation.
- Any software provided along with the SOFTWARE PRODUCT that is associated with a separate end-user license agreement is licensed to You under the terms of that license agreement.
- By installing, copying, downloading, storing, accessing or otherwise using the SOFTWARE PRODUCT, You agree unconditionally to be bound by the terms of this EULA, even if this EULA is deemed to be a modification of any previous arrangement or contract. If You do not agree to the terms of this EULA, DSC is unwilling to license the SOFTWARE PRODUCT to You, and You have no right to use it.

LICENSE

The SOFTWARE PRODUCT is protected by copyright laws and international copyright treaties, as well as other intellectual property laws and treaties. The SOFTWARE PRODUCT is licensed, not sold.

GRANT OF LICENSE This EULA grants You the following rights:

- (a) Software Installation and Use- For each license You acquire, You may have only one copy of the SOFTWARE PRODUCT installed.
- (b) Storage/Network Use- The SOFTWARE PRODUCT may not be installed, accessed, displayed, run, shared or used concurrently on or from different computers, including a workstation, terminal or other digital electronic device ("Device"). In other words, if You have several workstations, You will have to acquire a license for each workstation where the SOFTWARE will be used.
- (c) Backup Copy – You may make back-up copies of the SOFTWARE PRODUCT, but You may only have one copy per license installed at any given time. You may use the back-up copy solely for archival purposes. Except as expressly provided in this EULA, You may not otherwise make copies of the SOFTWARE PRODUCT, including the printed materials accompanying the SOFTWARE.

DESCRIPTION OF OTHER RIGHTS AND LIMITATIONS

- **(a) Limitations on Reverse Engineering, Decompilation and Disassembly** – You may not reverse engineer, decompile, or disassemble the SOFTWARE PRODUCT, except and only to the extent that such activity is expressly permitted by applicable law notwithstanding this limitation. You may not make any changes or modifications to the Software, without the written permission of an officer of DSC. You may not remove any proprietary notices, marks or labels from the Software Product. You shall institute reasonable measures to ensure compliance with the terms and conditions of this EULA.
- **(b) Separation of Components**- The SOFTWARE PRODUCT is licensed as a single product. Its component parts may not be separated for use on more than one HARDWARE unit.

- **(c) Single INTEGRATED PRODUCT** – If You acquired this SOFTWARE with HARDWARE, then the SOFTWARE PRODUCT is licensed with the HARDWARE as a single integrated product. In this case, the SOFTWARE PRODUCT may only be used with the HARDWARE as set forth in this EULA.
- **(d) Rental** – You may not rent, lease or lend the SOFTWARE PRODUCT. You may not make it available to others or post it on a server or web site.
- **(e) Software Product Transfer**- You may transfer all of Your rights under this EULA only as part of a permanent sale or transfer of the HARDWARE, provided You retain no copies, You transfer all of the SOFTWARE PRODUCT (including all component parts, the media and printed materials, any upgrades and this EULA), and provided the recipient agrees to the terms of this EULA. If the SOFTWARE PRODUCT is an upgrade, any transfer must also include all prior versions of the SOFTWARE PRODUCT.
- **(f) Termination** – Without prejudice to any other rights, DSC may terminate this EULA if You fail to comply with the terms and conditions of this EULA. In such event, You must destroy all copies of the SOFTWARE PRODUCT and all of its component parts.
- **(g) Trademarks** – This EULA does not grant You any rights in connection with any trademarks or service marks of DSC or its suppliers.

COPYRIGHT – All title and intellectual property rights in and to the SOFTWARE PRODUCT (including but not limited to any images, photographs, and text incorporated into the SOFTWARE PRODUCT), the accompanying printed materials, and any copies of the SOFTWARE PRODUCT, are owned by DSC or its suppliers. You may not copy the printed materials accompanying the SOFTWARE PRODUCT. All title and intellectual property rights in and to the content which may be accessed through use of the SOFTWARE PRODUCT are the property of the respective content owner and may be protected by applicable copyright or other intellectual property laws and treaties. This EULA grants You no rights to use such content. All rights not expressly granted under this EULA are reserved by DSC and its suppliers.

EXPORT RESTRICTIONS – You agree that You will not export or re-export the SOFTWARE PRODUCT to any country, person, or entity subject to Canadian export restrictions.

CHOICE OF LAW – This Software License Agreement is governed by the laws of the Province of Ontario, Canada.

ARBITRATION – All disputes arising in connection with this Agreement shall be determined by final and binding arbitration in accordance with the Arbitration Act, and the parties agree to be bound by the arbitrator's decision. The place of arbitration shall be Toronto, Canada, and the language of the arbitration shall be English.

LIMITED WARRANTY

- **(a) NO WARRANTY** – DSC PROVIDES THE SOFTWARE “AS IS” WITHOUT WARRANTY. DSC DOES NOT WARRANT THAT THE SOFTWARE WILL MEET YOUR REQUIREMENTS OR THAT OPERATION OF THE SOFTWARE WILL BE UNINTERRUPTED OR ERROR-FREE.
- **(b) CHANGES IN OPERATING ENVIRONMENT** – DSC shall not be responsible for problems caused by changes in the operating characteristics of the HARDWARE, or for problems in the interaction of the SOFTWARE PRODUCT with non-DSC-SOFTWARE or HARDWARE PRODUCTS.
- **(c) LIMITATION OF LIABILITY; WARRANTY REFLECTS ALLOCATION OF RISK**-IN ANY EVENT, IF ANY STATUTE IMPLIES WARRANTIES OR CONDITIONS NOT STATED IN THIS LICENSE AGREEMENT, DSC'S ENTIRE LIABILITY UNDER ANY PROVISION OF THIS LICENSE AGREEMENT SHALL BE LIMITED TO THE GREATER OF THE AMOUNT ACTUALLY PAID BY YOU TO LICENSE THE SOFTWARE PRODUCT AND FIVE CANADIAN DOLLARS (CAD\$5.00). BECAUSE SOME JURISDICTIONS DO NOT ALLOW THE EXCLUSION OR LIMITATION OF LIABILITY FOR CONSEQUENTIAL OR INCIDENTAL DAMAGES, THE ABOVE

LIMITATION MAY NOT APPLY TO YOU.

- **(d) DISCLAIMER OF WARRANTIES** – THIS WARRANTY CONTAINS THE ENTIRE WARRANTY AND SHALL BE IN LIEU OF ANY AND ALL OTHER WARRANTIES, WHETHER EXPRESSED OR IMPLIED (INCLUDING ALL IMPLIED WARRANTIES OF MERCHANTABILITY OR FITNESS FOR A PARTICULAR PURPOSE) AND OF ALL OTHER OBLIGATIONS OR LIABILITIES ON THE PART OF DSC. DSC MAKES NO OTHER WARRANTIES. DSC NEITHER ASSUMES NOR AUTHORIZES ANY OTHER PERSON PURPORTING TO ACT ON ITS BEHALF TO MODIFY OR TO CHANGE THIS WARRANTY, NOR TO ASSUME FOR IT ANY OTHER WARRANTY OR LIABILITY CONCERNING THIS SOFTWARE PRODUCT.
- **(e) EXCLUSIVE REMEDY AND LIMITATION OF WARRANTY** – UNDER NO CIRCUMSTANCES SHALL DSC BE LIABLE FOR ANY SPECIAL, INCIDENTAL, CONSEQUENTIAL OR INDIRECT DAMAGES BASED UPON BREACH OF WARRANTY, BREACH OF CONTRACT, NEGLIGENCE, STRICT LIABILITY, OR ANY OTHER LEGAL THEORY. SUCH DAMAGES INCLUDE, BUT ARE NOT LIMITED TO, LOSS OF PROFITS, LOSS OF THE SOFTWARE PRODUCT OR ANY ASSOCIATED EQUIPMENT, COST OF CAPITAL, COST OF SUBSTITUTE OR REPLACEMENT EQUIPMENT, FACILITIES OR SERVICES, DOWN TIME, PURCHASERS TIME, THE CLAIMS OF THIRD PARTIES, INCLUDING CUSTOMERS, AND INJURY TO PROPERTY.

WARNING: DSC recommends that the entire system be completely tested on a regular basis. However, despite frequent testing, and due to, but not limited to, criminal tampering or electrical disruption, it is possible for this SOFTWARE PRODUCT to fail to perform as expected.

Always ensure you obtain the latest version of the User Guide. Updated versions of this User Guide are available by contacting your distributor.

© 2014 Tyco International Ltd. and its Respective Companies. All Rights Reserved. The trademarks, logos, and service marks displayed on this document are registered in the United States [or other countries]. Any misuse of the trademark is strictly prohibited and Tyco International Ltd. will aggressively enforce its intellectual property rights to the fullest extent of the law, including pursuit of criminal prosecution wherever necessary. All trademarks not owned by Tyco International Ltd. are the property of their respective owners, and are used with permission or allowed under applicable laws. Product offerings and specifications are subject to change without notice. Actual products may vary from photos. Not all products include all features. Availability varies by region; contact your sales representative.

Documents / Resources



[DSC PG Series Wireless PowerG High Security Mirror Detector](#) [pdf] Installation Guide D-304674, PG9974, PG8974, PG4974, Wireless PowerG High Security Mirror Detector, PG Series Wireless PowerG High Security Mirror Detector, PG Series High Security Mirror Detector, Wireless PowerG High Security Mirror Detector, High Security Detector, Mirror Detector, Detector