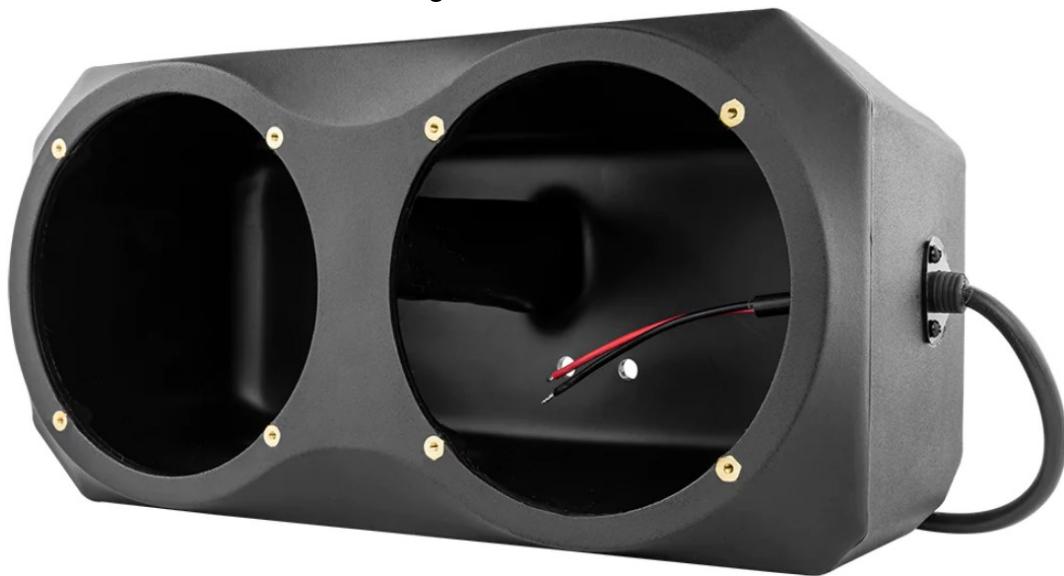


## DS18 SLG-UDSD6 Polaris Slingshot Under Dash Subwoofer Owner's Manual

[Home](#) » [DS18](#) » DS18 SLG-UDSD6 Polaris Slingshot Under Dash Subwoofer Owner's Manual 

DS18 SLG-UDSD6 Polaris Slingshot Under Dash Subwoofer Owner's Manual



### Contents

- [1 INTRODUCTION](#)
- [2 FEATURES](#)
- [3 WHAT'S IN THE BOX](#)
- [4 INSTALLATION](#)
- [5 MEASUREMENTS](#)
- [6 WARRANTY](#)
- [7 Documents / Resources](#)
- [8 Related Posts](#)

## INTRODUCTION

If you're looking to maximize sound in your Polaris Slingshot, you may consider adding this durable Polyethylene Passenger Side Under Dash 6.5" Subwoofer Enclosure by DS18. This enclosure allows you to mount two 6.5" subwoofers underneath your dash to give you the bass your stereo system deserves without compromising your storage compartments. This enclosure comes with a black textured finish to match the factory's look. Very easy to install using supplied bolts directly into place and do not interfere with your factory glove box.

## FEATURES

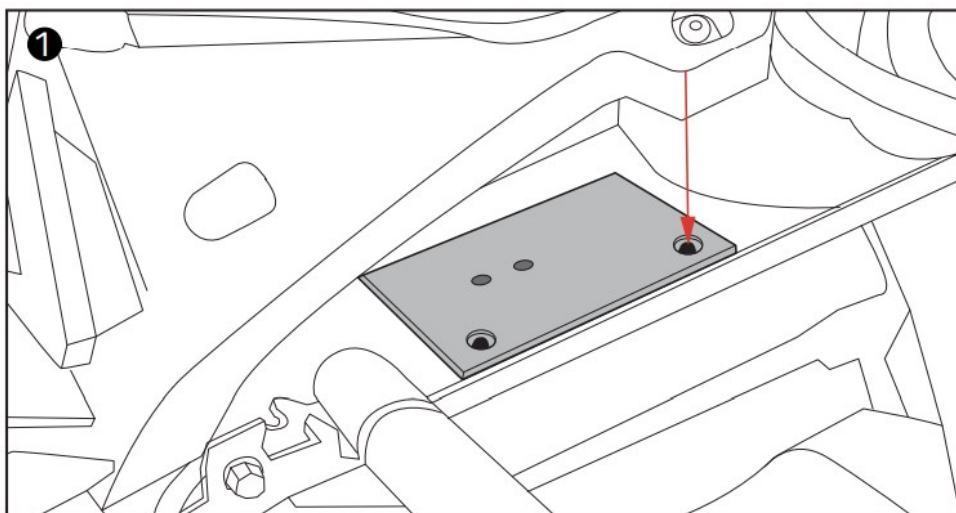
- Easy to install – All Hardware and Wiring Included.
- OFC tinned 12Ga Wiring for More Power Handling and Durability.
- Fits Slingshot Models from 2015 or later
- Coated Metal Bracket for better Resistance to The Elements.
- Fits two 6.5" Subwoofers. (not included)
- Durable (PE) waterproof enclosure with UV Protection.
- 0.3ft3 / 8.5L Sealed Type Enclosure.
- Damping Material for Better
- Subwoofer Performance.
- Black OEM Finish

## WHAT'S IN THE BOX

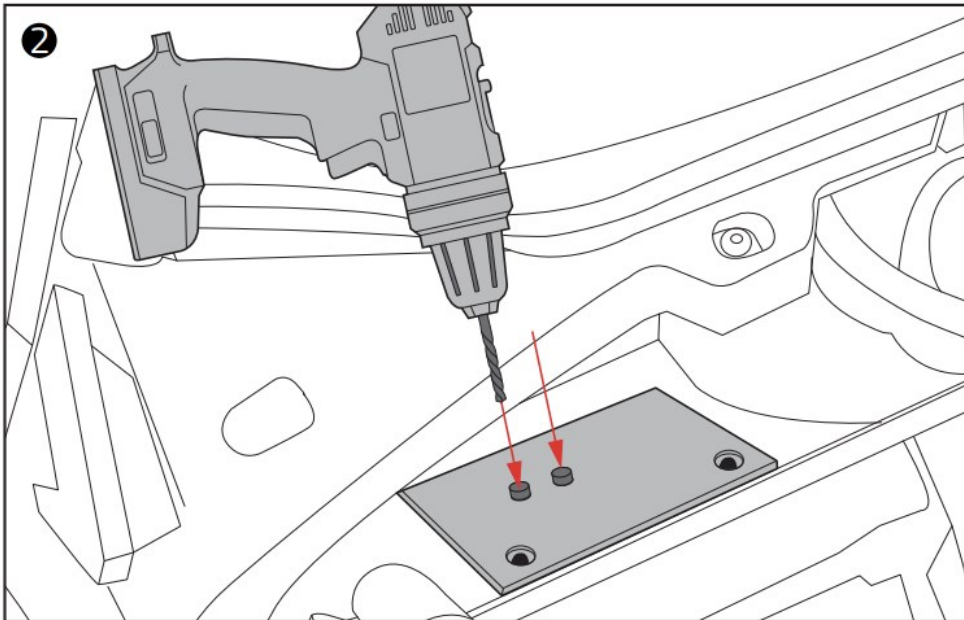
- Subwoofer Enclosure
- Mounting Bracket
- 2 x M8 x 1" Screws and washers
- 8 x M4 Speaker Screws
- 6mm Allen key

## INSTALLATION

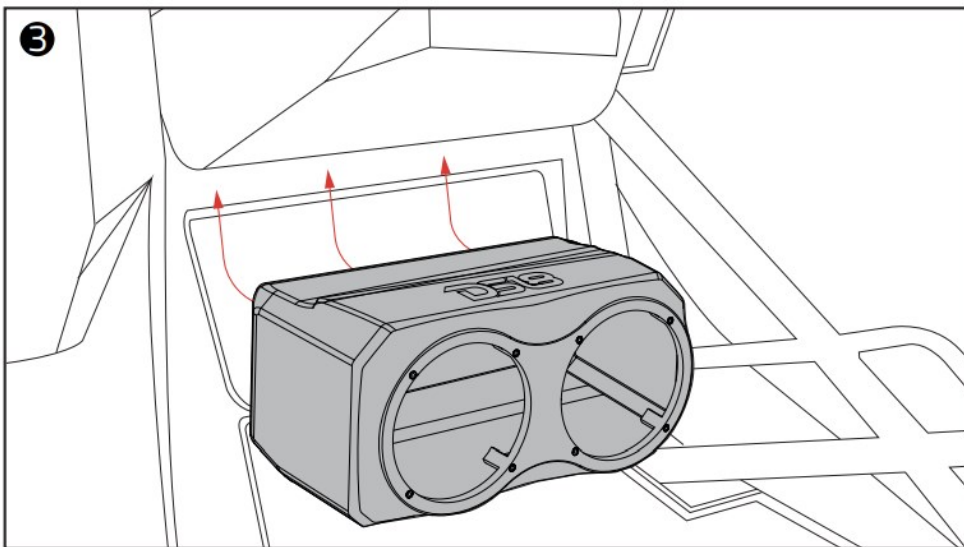
1. Open the hood of the Slingshot to get access to the engine bay. Look at the glovebox area in the passenger side, you will see a plane area where two pins will align with the bracket provided. **Picture 1)**



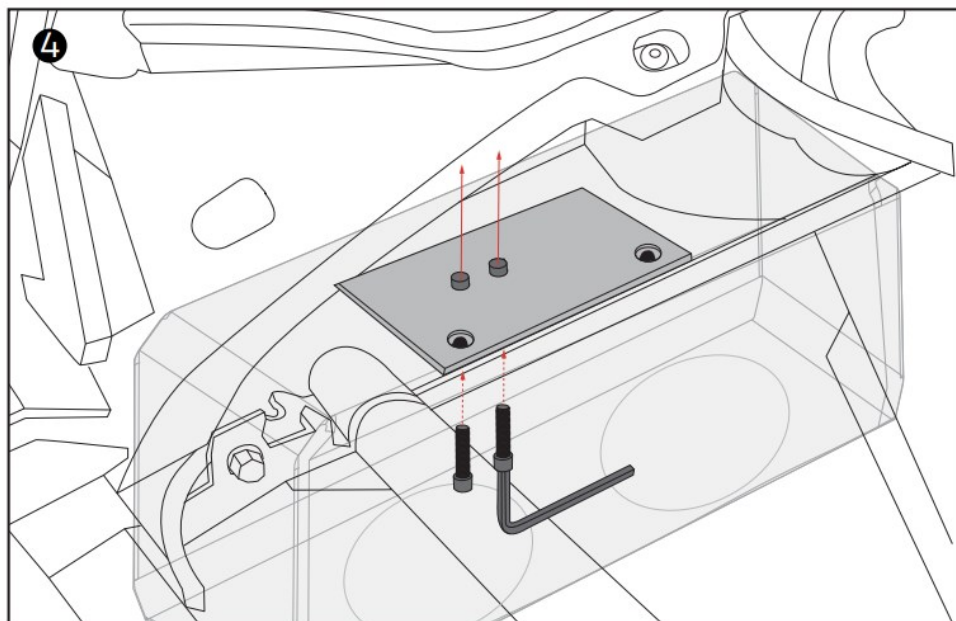
2. For the pass-through screws, if you have a model from 2017 or later all the holes are pre-drilled from factory, for older models you need to open these two holes using a 1/2" drill bit. **(Picture 2)**



3. Place the enclosure in the final location under the dash with subwoofer holes facing down. **(Picture 3)**

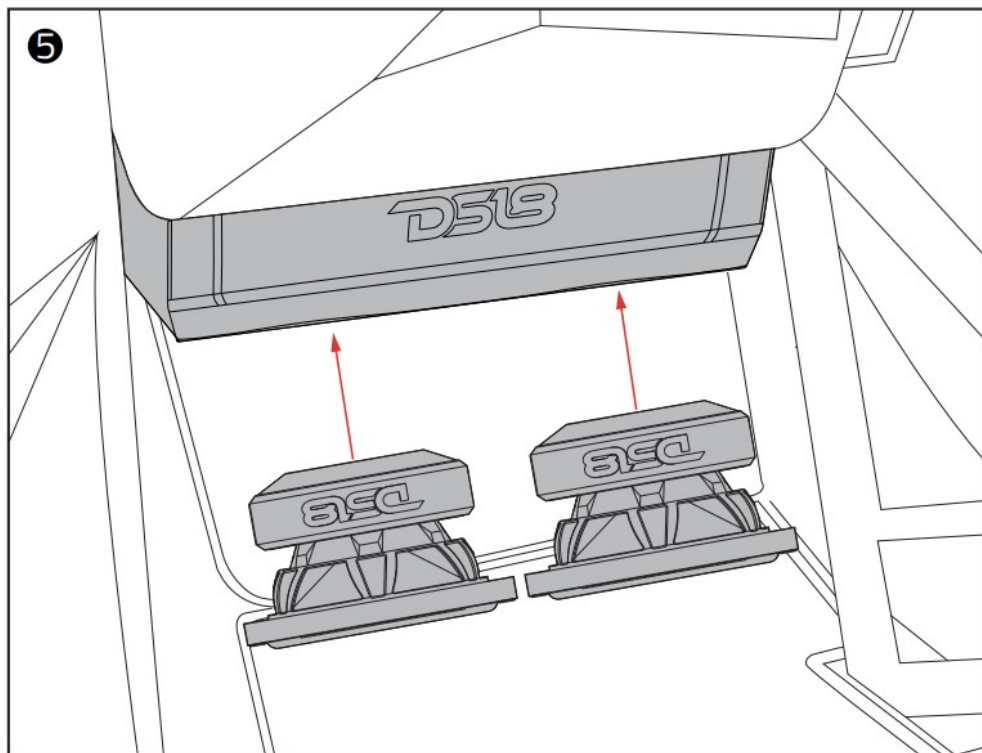


4. Then use the included M8 screws and insert them from the inside of the box, align it with the previously opened holes, using the supplied Allen key, tighten it as far as it will go by hand. **(Picture 4)**



5. Install the Subwoofers on the box and do not forget to put back the damping material, be careful not to over-

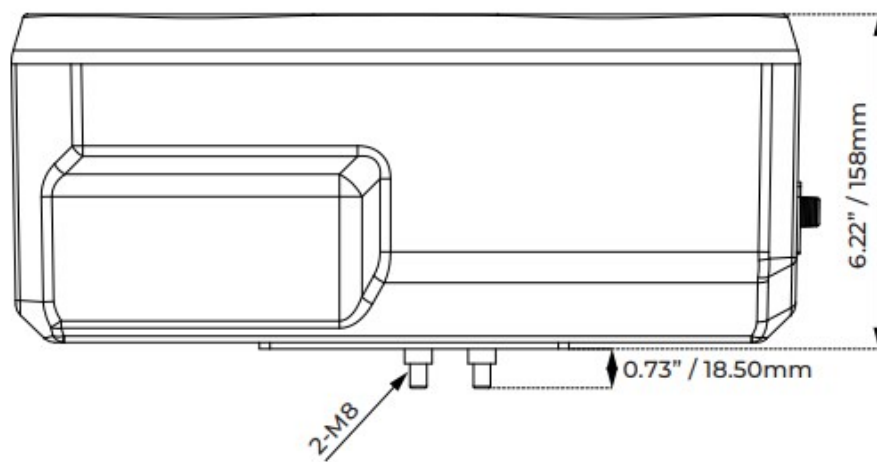
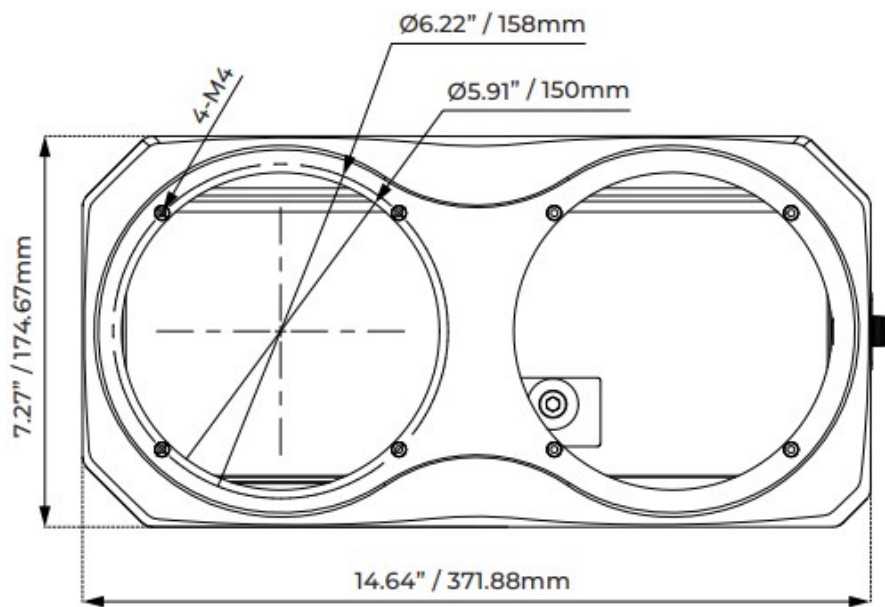
tighten or the hole may be damaged and not properly secure the subwoofer. **(Picture 5)**

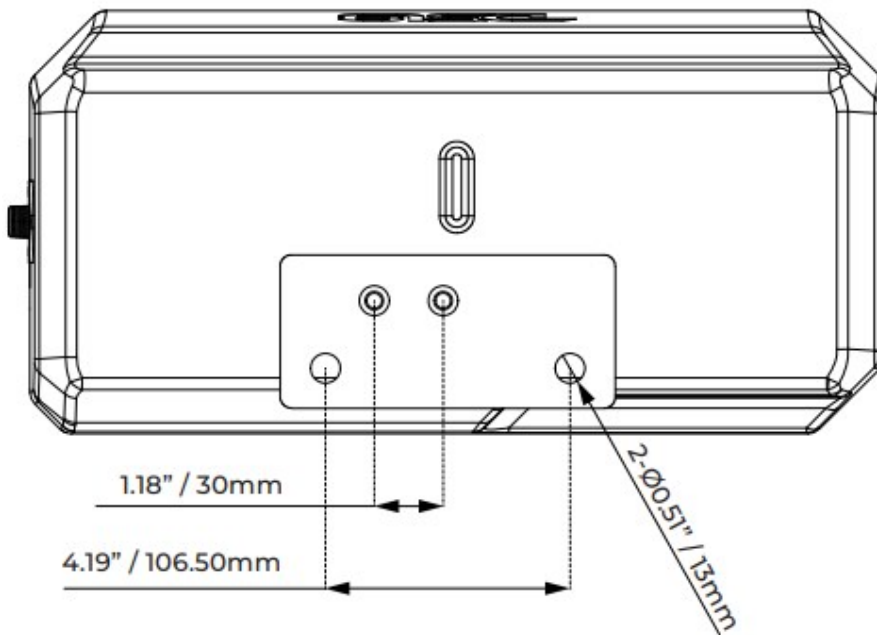
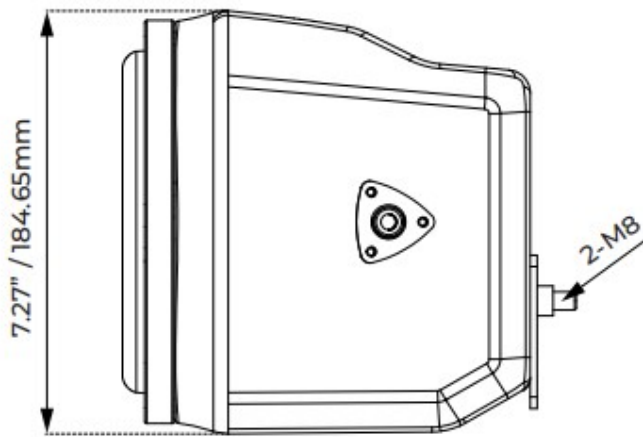


This kit needs an aftermarket amp pre-installed with the speaker wires in this location, only after this step can you install the speakers using the aftermarket amp's speaker wire.

This concludes the installation of the SLG-UDSD6 and it is ready to enjoy your new sound system upgrade!

## MEASUREMENTS





## WARRANTY

Please visit our website [DS18.com](https://www.ds18.com) for more information on our warranty policy.

We reserve the right to change products and specifications at any time without notice.  
Images may or may not include optional equipment.



### **WARNING:**

Cancer and Reproductive Harm.

[www.P65Warning.ca.gov](https://www.P65Warning.ca.gov)

FOR MORE INFORMATION PLEASE VISIT

[DS18.COM](https://www.ds18.com)



**Documents / Resources**



[DS18 SLG-UDSD6 Polaris Slingshot Under Dash Subwoofer](#) [pdf] Owner's Manual  
SLG-UDSD6, SLG-UDSD6 Polaris Slingshot Under Dash Subwoofer, Polaris Slingshot Under D  
ash Subwoofer, Slingshot Under Dash Subwoofer, Under Dash Subwoofer, Subwoofer