



## DS18 SLG-HD6LD Polaris Slingshot Front and Rear Facing Headrest Pods Owner's Manual

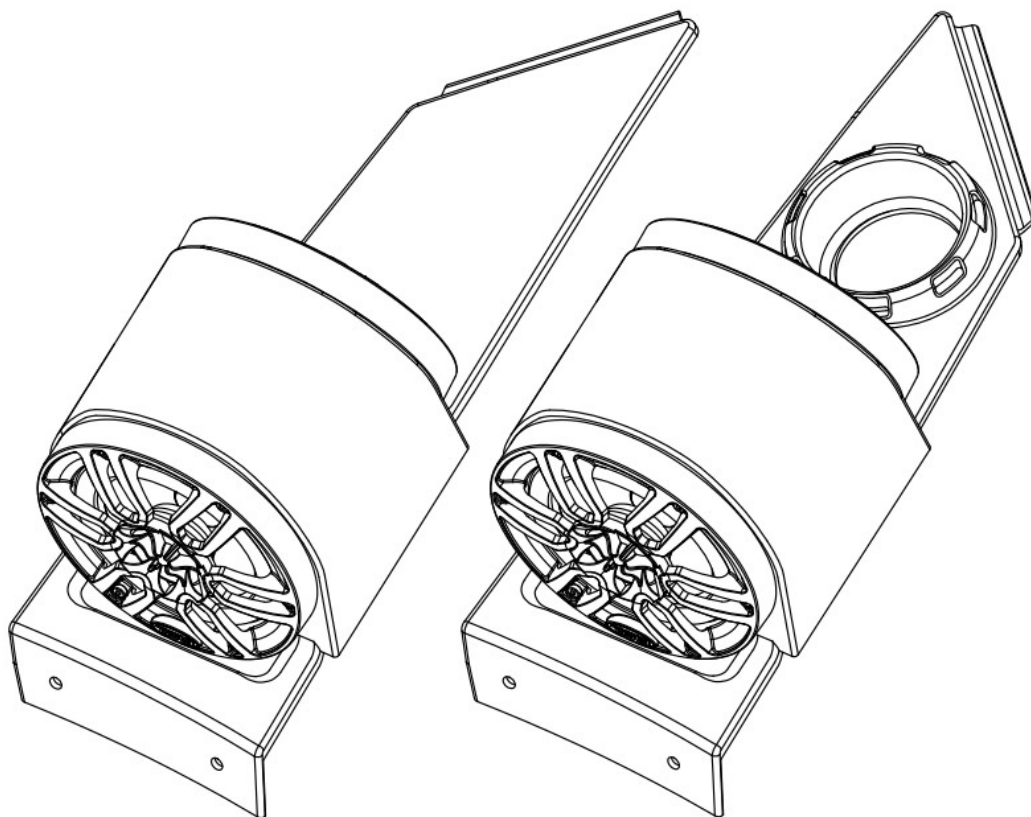
[Home](#) » [DS18](#) » DS18 SLG-HD6LD Polaris Slingshot Front and Rear Facing Headrest Pods Owner's Manual 



OWNER'S MANUAL  
SLG-HD6LD



POLARIS SLINGSHOT FRONT & REAR FACING HEADREST  
PODS WITH 4 X NXL-6BK SPEAKERS INCLUDED



**SPECIALLY  
DESIGNED FOR**  
  
**SLINGSHOT**



△ ▲ **FOR ALL ELEMENTS** ≡

## Contents

- [1 INTRODUCTION](#)
- [2 FEATURES](#)
- [3 WHAT'S IN THE BOX](#)
- [4 INSTALLATION:](#)
- [5 CONNECTION OPTIONS](#)
- [6 GENERAL](#)
- [7 SPEAKER](#)
- [SPECIFICATIONS](#)
- [8 MEASUREMENTS](#)
- [9 Documents / Resources](#)
  - [9.1 References](#)

## INTRODUCTION

If you're looking to maximize sound in your Polaris Slingshot, you may consider adding these durable Polyethylene headrest Pods by DS18. These pods include two 6.5" Waterproof Speakers with RGB LED lights (NXL-6BK) facing forward and back on each side that your stereo system deserves. These pods come in pairs

(Driver & Passenger) and they are very easy to Install using factory bolts that fits directly into place.

## FEATURES

- 8 core 0.6M Input Wires for RGB Lighting and Speakers.
- Pods Sold as a Set for Driver and Passenger Sides.
- NXL-6BK Waterproof RGB LED Speakers Included.
- Easy to install using OEM bolts and location.
- Fits Slingshot Models from 2015 or later
- Durable (PE) waterproof Panels with UV Protection.
- Open Baffle Speaker Pod design.
- Black Finish

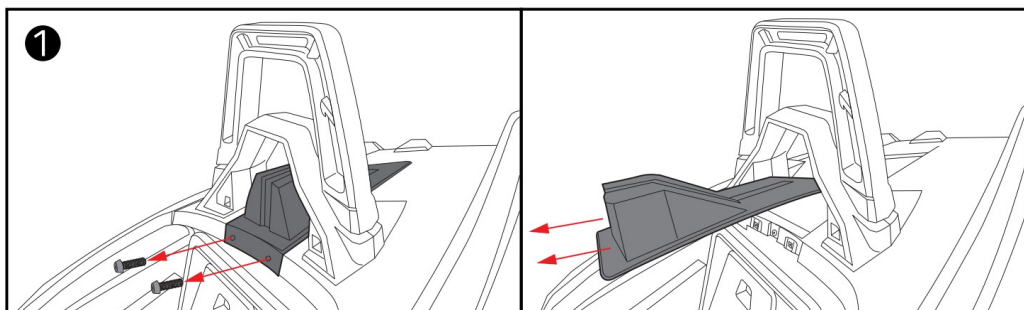
## WHAT'S IN THE BOX

- Left & Right Speaker Pods
- 4 x NXL-6BK Speakers
- Speaker Wiring

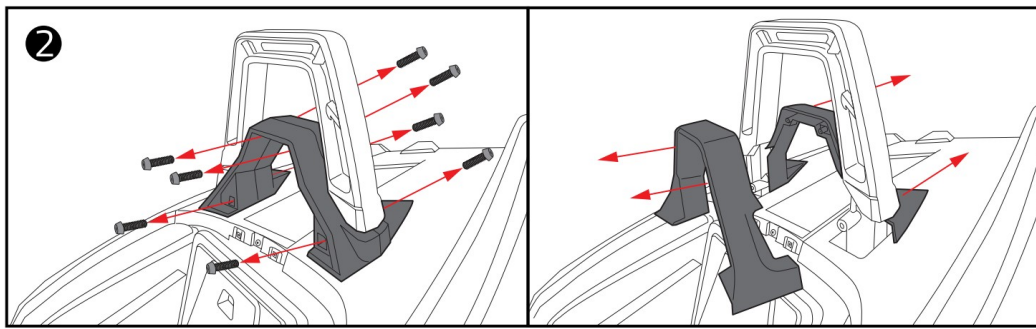


## INSTALLATION:

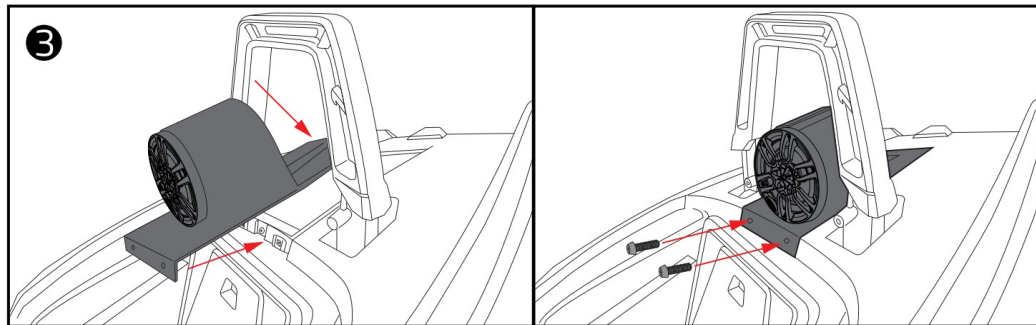
Starting with the passenger side, Remove the factory rear deck hump using a T25 TORX socket to extract the (2) screws on front bottom of the piece and pull it to the front. (Picture 1)



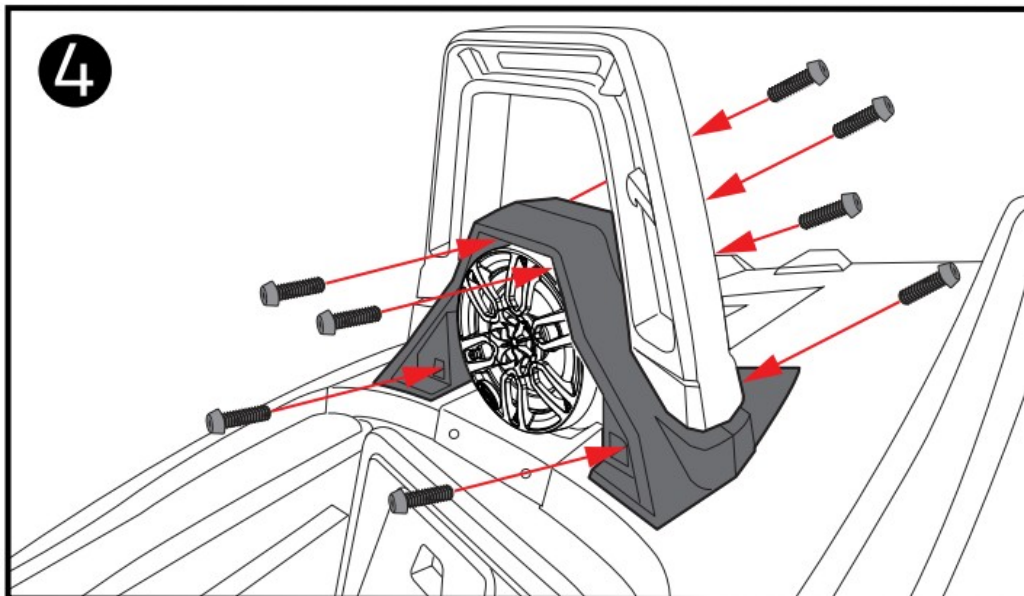
Remove the factory rear hoop accent using a T40 TORX socket to extract the (2) screws on bottom of the piece and a T25 TORX to extract the (2) screws on top of the piece and pull it to the front, then using the T40 TORX to extract the (2) screws in the back of the piece and pull it to the back. (Picture 2)



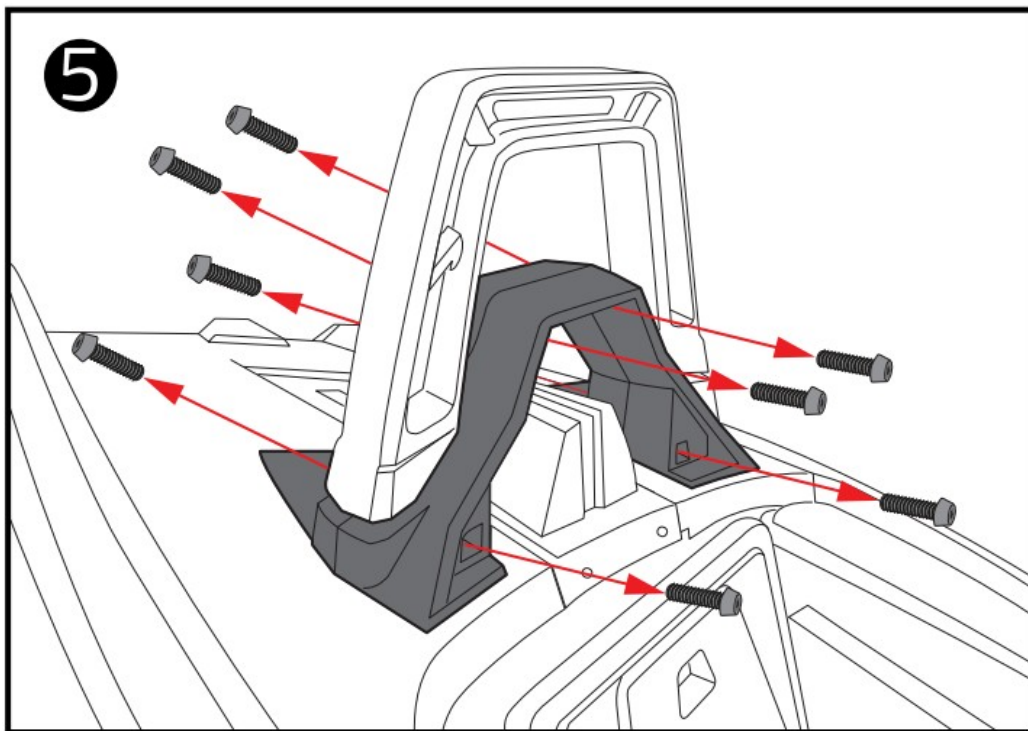
Install the new speaker pod in the same way that factory was pulled out and secure it using the factory T25 bolts on front bottom of the piece. (Picture 3)



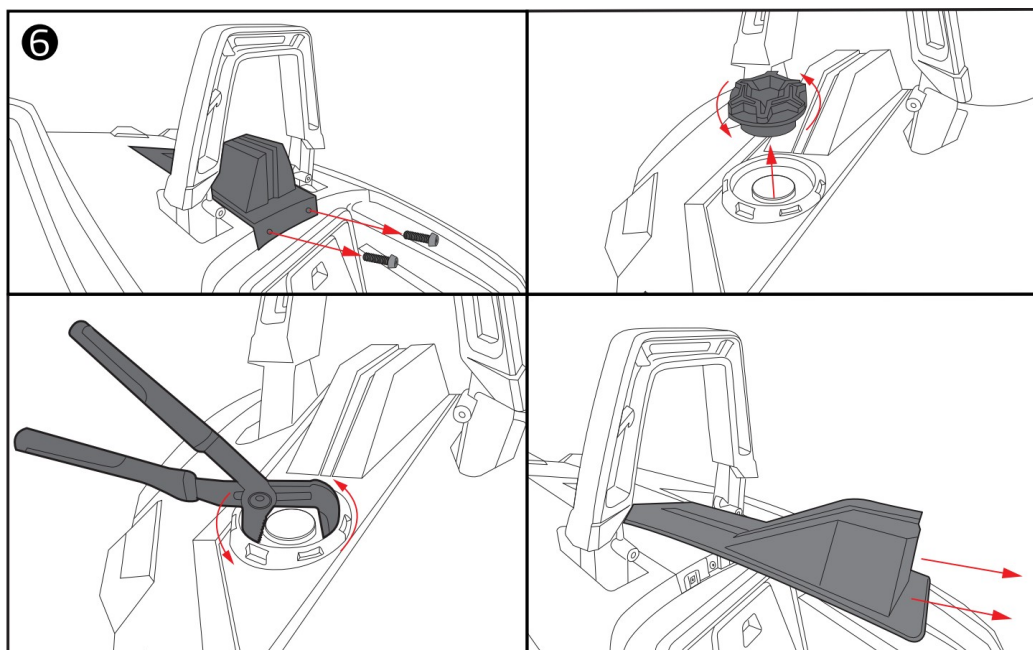
Re-install the rear hoop accent in the same way that factory was pulled out. (Picture 4)  
This concludes the passenger side installation of the SLG-HD6LD pod, then move next to the driver side.



Remove the factory rear hoop accent using a T40 TORX socket to extract the (2) screws on bottom of the piece and a T25 TORX to extract the (2) screws on top of the piece and pull it to the front, then using the T40 TORX to extract the (2) screws in the back of the piece and pull it to the back. (Picture 5)

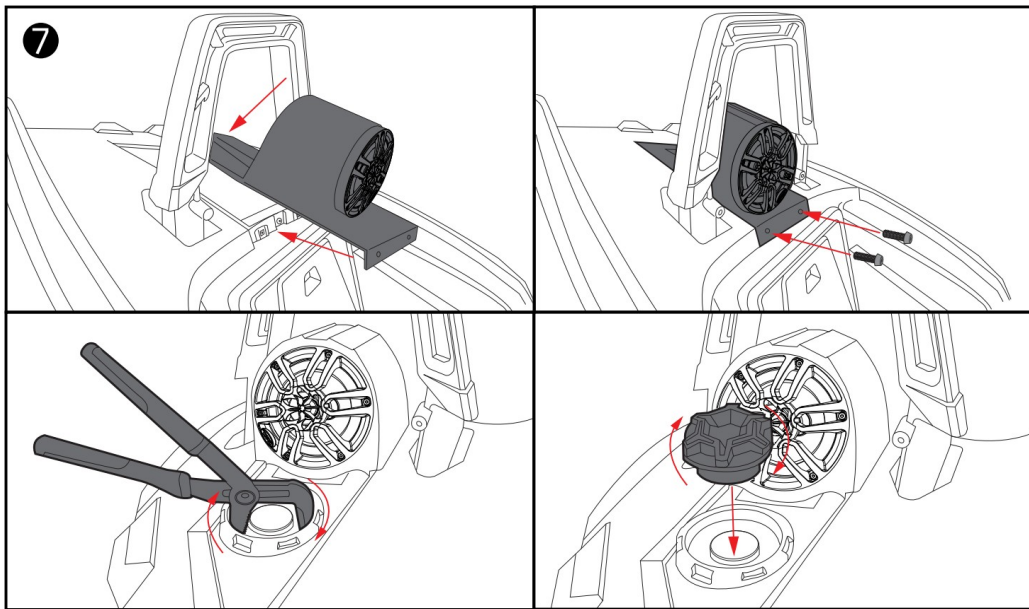


Remove the factory rear deck hump using a T25 TORX socket to extract the (2) screws on front bottom of the piece, then remove the gas cap and using an oversized pliers, un-screw the Ring-Nut that holds the gas tube in place, after this you can pull out the piece. (Picture 6)

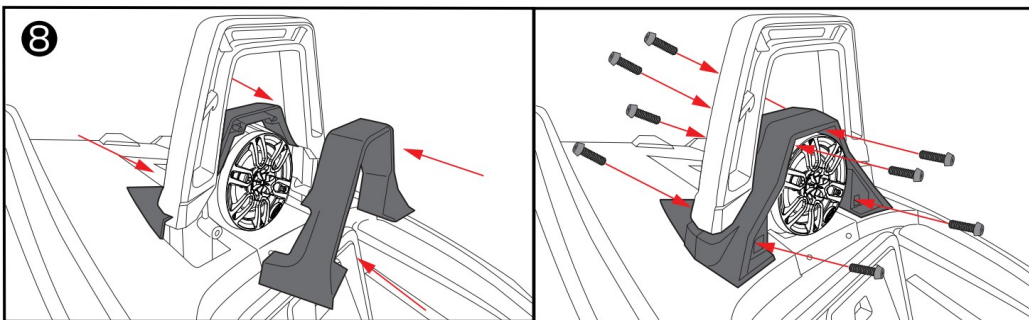


Now, carefully slide in the new speaker pod in place and secure it using the factory T25 bolts on front bottom of the piece, then re-install the Ring-Nut and the gas cap. (Picture 7)





Re-install the rear hoop accent in the same way that was pulled out. (Picture 8)

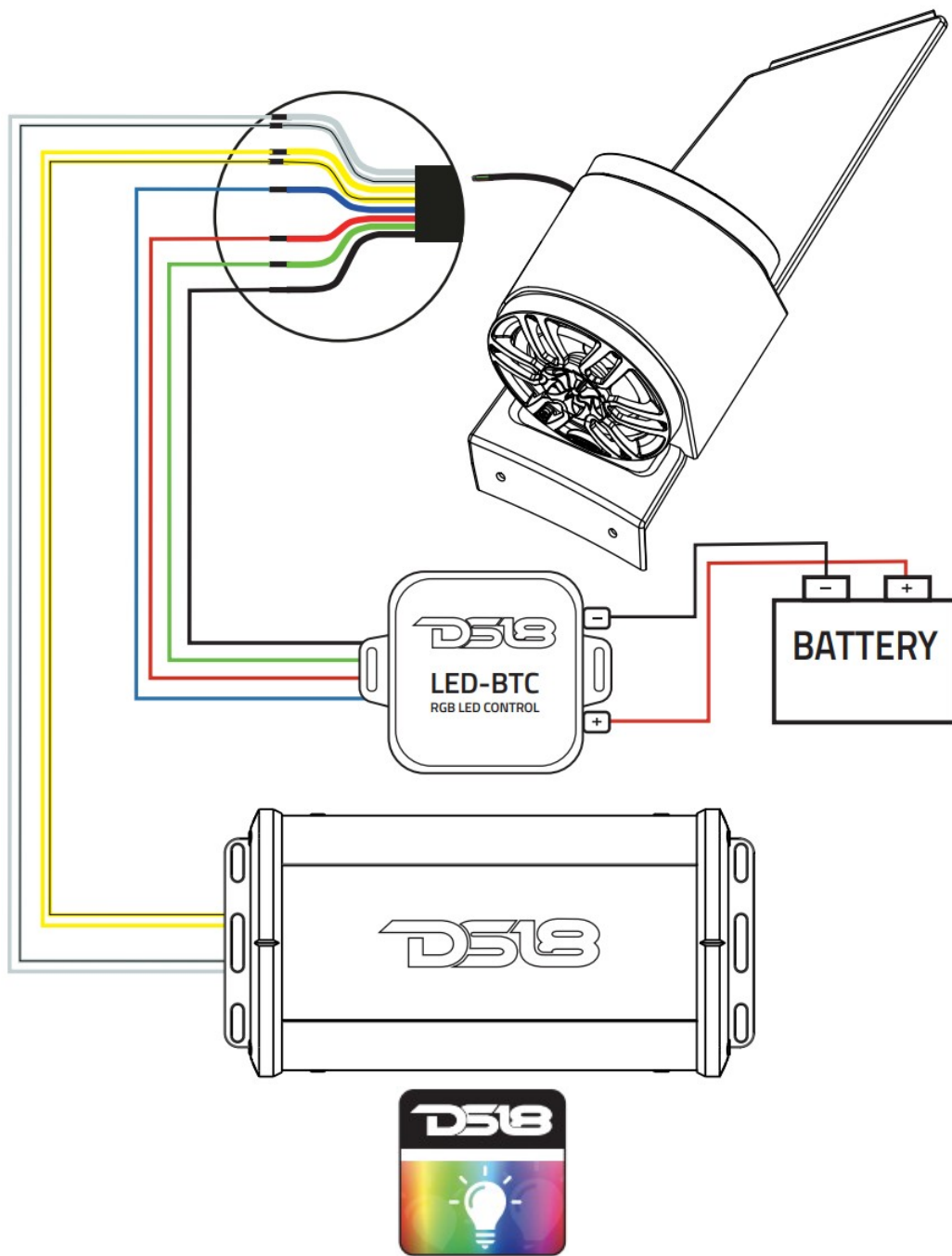










This kit needs an aftermarket amp pre-installed with the speaker wires in this location, only after this step can you install the speakers using the aftermarket amp's speaker wire and RGB LED wires (optional) of the LED module (LED -BTC not included). Secure the speakers using stainless steel screws and tighten them, be careful not to over-tighten or the hole may be damaged and not properly secure the speakers.

This concludes the installation of the SLG-HD6LD and it is ready to enjoy your new sound system upgrade!

## CONNECTION OPTIONS

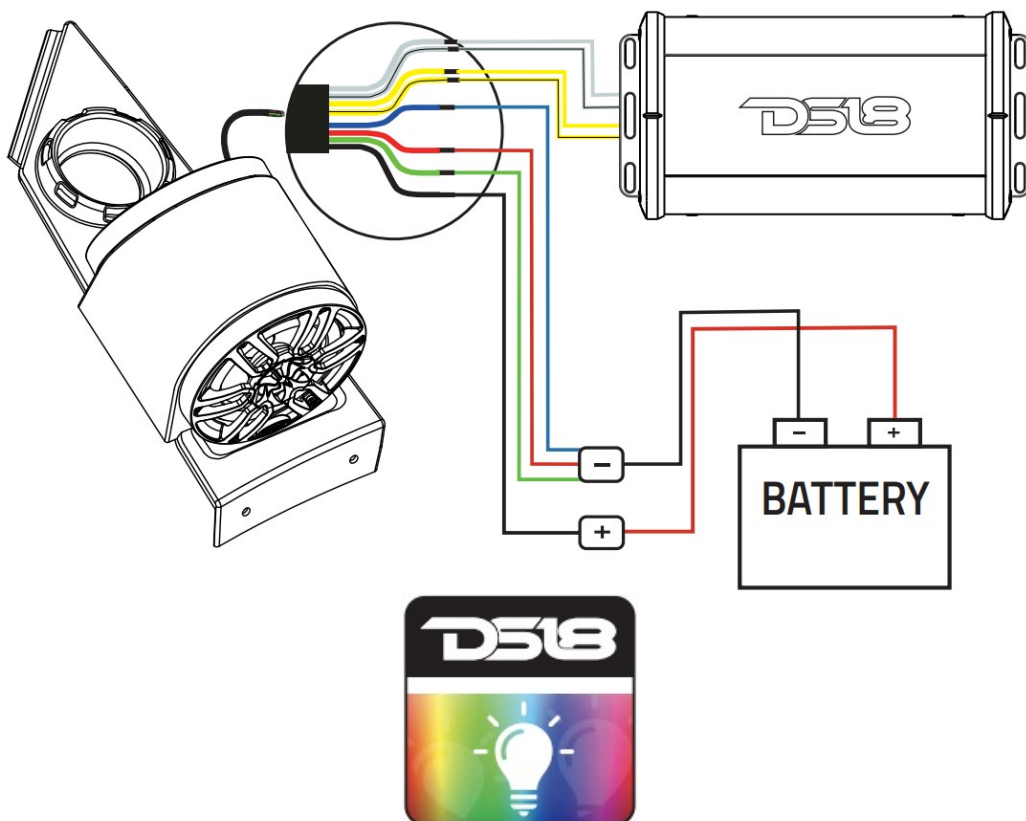
1. If you have an LED Control Module (LED-BTC), Connect as Shown in the Following Diagram:



	Blue LED (-)
	Red LED (-)
	Green LED (-)
	Black 12V DC (+)
	White Left Speaker (+)
	White/Black Left Speaker (-)
	Yellow Right Speaker (+)
	Yellow/Black Right Speaker (-)

2. To connect without LED Control Module (LED-BTC), Connect as Shown in the Following Diagram:

- Black wire "BK" connected to battery Positive (+) 12V
- White Color Light "R"; "B" and "G" connected to battery Negative (-)
- Green Color Light "G" connected to battery Negative (-)
- Red Color Light "R" connected to battery Negative (-)
- Blue Color Light "B" connected to battery Negative (-)
- Purple Color Light "R" and "B" connected to battery Negative (-)
- Yellow Color Light "R" and "G" connected to battery Negative (-)
- Cyan Color Light "B" and "G" connected to battery Negative (-)





	Blue LED (-)
	Red LED (-)
	Green LED (-)
	Black 12V DC (+)
	White Left Speaker (+)
	White/Black Left Speaker (-)
	Yellow Right Speaker (+)
	Yellow/Black Right Speaker (-)

## GENERAL

Total Impedance ..... 4 x 4 Ohms  
 Load Configuration ..... Singles  
 Input Wire ..... 8 Core OFC Tinned (2ft / 0.6m)

## SPEAKER SPECIFICATIONS

Speaker Type / Size / ..... 6.5" Waterproof Coaxial with RGB LED  
 RMS Power Handling ..... 100W  
 MAX Power Handling ..... 300W  
 Sensitivity (1w/1m) ..... 91dB  
 Frequency Response ..... 45Hz-20KHz  
 Recommended Hi Pass Crossover ..... 65Hz  
 Voice Coil Diameter ..... 1.2" / 30.5mm  
 Voice Coil Former Material ..... Kapton  
 Winding Material ..... CAW  
 Cone Material ..... Injection Molded Polypropylene + UV Compliant  
 Surround Material ..... Butyl (Rubber)  
 Basket Material ..... High Temp Injection Molded Composite with UV Protection coating  
 Magnet Material ..... Ferrite+Neodymium  
 Magnet Weight ..... 4oz + 0.32oz

### BOX SPECIFICATIONS

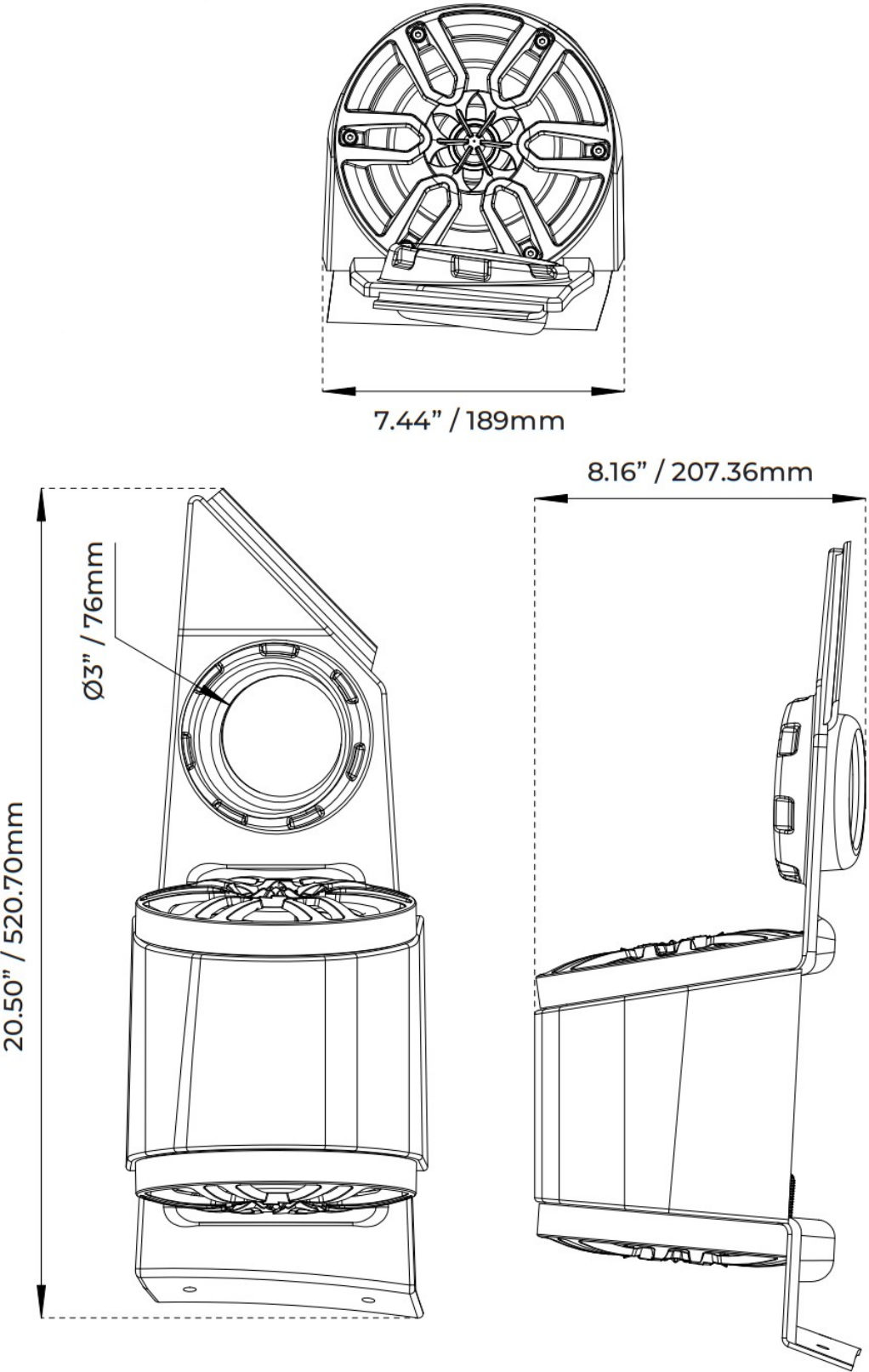
Box Type ..... Open Baffle  
 Box Material ..... Polyethylene (PE)  
 Finish Material ..... Black  
 UV Protection ..... Yes  
 Waterproof Rating ..... IP65

### MEASUREMENT

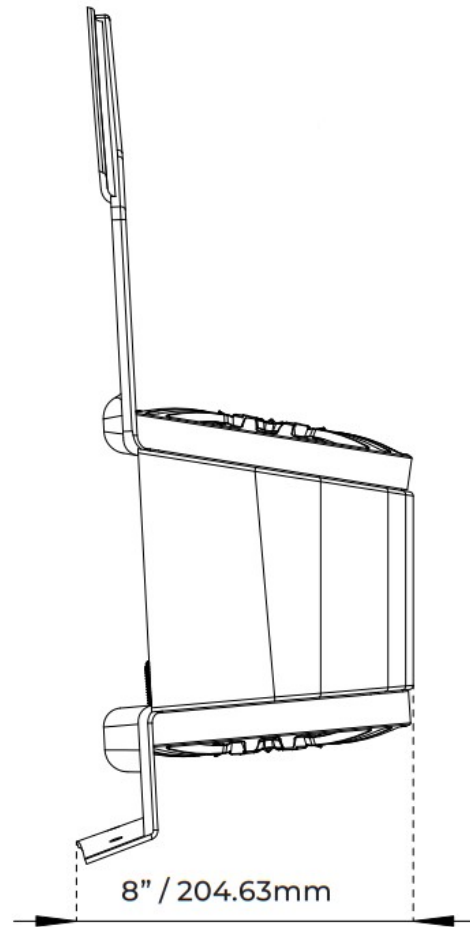
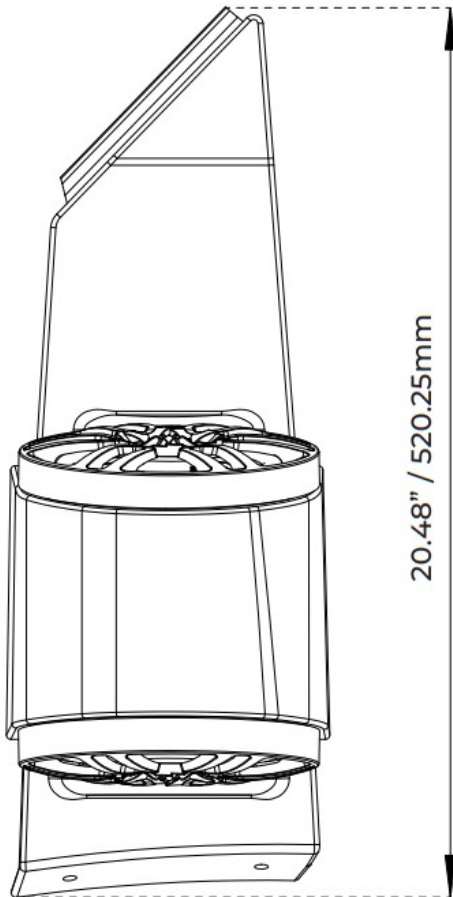
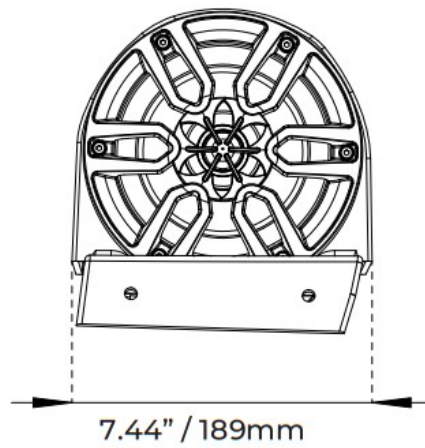
Overall Height ..... 8" / 204mm  
 Overall Width ..... 7.44" / 189mm  
 Overall Depth ..... 20.5" / 520.7mm

## MEASUREMENTS

**DRIVER SIDE**



**PASSENGER Side**



## WARRANTY

Please visit our website [DS18.com](http://DS18.com) for more information on our warranty policy. We reserve the right to change products and specifications at any time without notice. Images may or may not include optional equipment.



### WARNING:

Cancer and Reproductive Harm.

[www.P65Warning.ca.gov](http://www.P65Warning.ca.gov)



## Documents / Resources



[DS18 SLG-HD6LD Polaris Slingshot Front and Rear Facing Headrest Pods](#) [pdf] Owner's Manual

SLG-HD6LD, SLG-HD6LD Polaris Slingshot Front and Rear Facing Headrest Pods, Polaris Slingshot Front and Rear Facing Headrest Pods, Slingshot Front and Rear Facing Headrest Pods, Front and Rear Facing Headrest Pods, Rear Facing Headrest Pods, Headrest Pods, Pods

## References

- [Official DS18 Pro Audio Store - Speakers, Subwoofers, Amps & More!](#)

[Manuals+](#)