



DS18 SLG-HD6 Polaris Slingshot Front and Rear Facing Headrest Pods Owner's Manual

[Home](#) » [DS18](#) » DS18 SLG-HD6 Polaris Slingshot Front and Rear Facing Headrest Pods Owner's Manual 

Contents

- [1 DS18 SLG-HD6 Polaris Slingshot Front and Rear Facing Headrest Pods](#)
- [2 Product Information](#)
- [3 Product Usage Instructions](#)
- [4 INTRODUCTION](#)
- [5 FEATURES](#)
- [6 INSTALLATION](#)
- [7 MEASUREMENTS](#)
- [8 WARRANTY](#)
- [9 Documents / Resources](#)
- [10 Related Posts](#)



DS18 SLG-HD6 Polaris Slingshot Front and Rear Facing Headrest Pods



Product Information

The Polaris Slingshot Front & Rear Facing Headrest Pods for 4x 6.5 Speakers are durable Polyethylene headrest pods designed by DS18 to maximize sound in your Polaris Slingshot vehicle. These pods allow you to mount two 6.5 speakers facing forward and back on each side, providing your stereo system with the sound quality it deserves. The pods come in pairs for the driver and passenger side and are easy to install using the factory bolts that fit directly into place. The speaker parameters are as follows:

- **Size:** 2.4 / 62mm

The kit requires an aftermarket amp to be pre-installed with the speaker wires in a specific location. Only after this step can you install the speakers using the aftermarket amp's speaker wire and RGB LED wires (optional) of the LED module (LED -BTC not included). It is important to secure the speakers using stainless steel screws and tighten them carefully to avoid damaging the holes and ensure proper speaker security.

The measurements for the driver side are:

- **Width:** 7.44 inches / 189.09mm
- **Length:** 20.50 inches / 520.70mm
- **Height:** 7.44 inches / 189.09mm

Product Usage Instructions

1. Starting with the passenger side:

- Remove the factory rear deck hump using a T25 TORX socket to extract the (2) screws on the front bottom of the piece and pull it to the front.
- Remove the factory rear hoop accent using a T40 TORX socket to extract the (2) screws on the bottom of the piece and a T25 TORX to extract the (2) screws on the top of the piece. Pull it to the front, then use the T40 TORX to extract the (2) screws at the back of the piece and pull it to the back.
- Install the new speaker pod in the same way that the factory was pulled out and secure it using the

factory T25 bolts on the front bottom of the piece.

- Re-install the rear hoop accent in the same way that it was pulled out.

2. Move to the driver side:

- Remove the factory rear hoop accent using a T40 TORX socket to extract the (2) screws on the bottom of the piece and a T25 TORX to extract the (2) screws on the top of the piece. Pull it to the front, then use the T40 TORX to extract the (2) screws at the back of the piece and pull it to the back.
- Remove the factory rear deck hump using a T25 TORX socket to extract the (2) screws on the front bottom of the piece. Remove the gas cap and use oversized pliers to un-screw the Ring-Nut that holds the gas tube in place. After this, you can pull out the piece.
- Carefully slide in the new speaker pod in place and secure it using the factory T25 bolts on the front bottom of the piece. Re-install the Ring-Nut and the gas cap.
- Re-install the rear hoop accent in the same way that it was pulled out.

3. The kit requires an aftermarket amp to be pre-installed with

the speaker wires in the specified location. After this step, you

can install the speakers using the aftermarket amp's speaker wire

and RGB LED wires (optional) of the LED module (LED -BTC not included). Secure the speakers using

stainless steel screws and tighten them carefully, avoiding over-tightening to prevent damage to the holes and ensure proper speaker security.

4. The installation is complete, and you can now enjoy your new sound system upgrade!

INTRODUCTION

If you're looking to maximize sound in your Polaris Slingshot, you may consider adding these durable Polyethylene headrest pods by DS18. These pods allow you to mount two 6.5" Speakers facing forward and back on each side that your stereo system deserves. These pods come in pairs (Driver & Passenger) and they are very easy to Install using factory bolts that fits directly into place.

FEATURES

- Pods Sold as a Set for Driver and Passenger Sides.
- Easy to install using OEM Bolts and location.
- Fits Slingshot Models from 2015 or later
- Fits any 6.5" DS18 Speakers. (not included)
- Durable (PE) Waterproof Panels with UV Protection.
- Open Baffle Speaker Pod design.
- Black Finish

SPEAKERS PARAMETERS

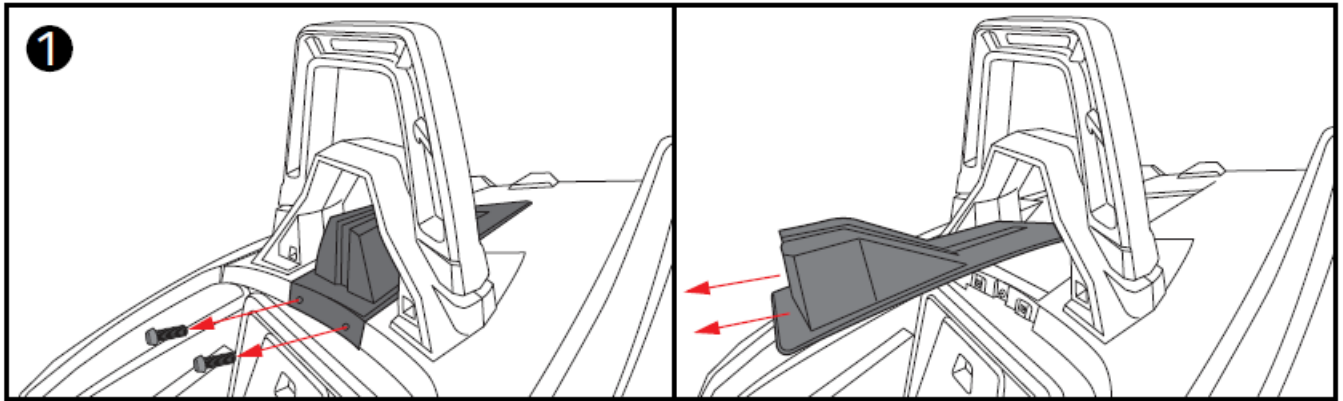
- Speaker Mounting hole: 5.7" / 145mm.
- Speaker Mounting Depth: Up to 2.4" / 62mm.

WHAT'S IN THE BOX

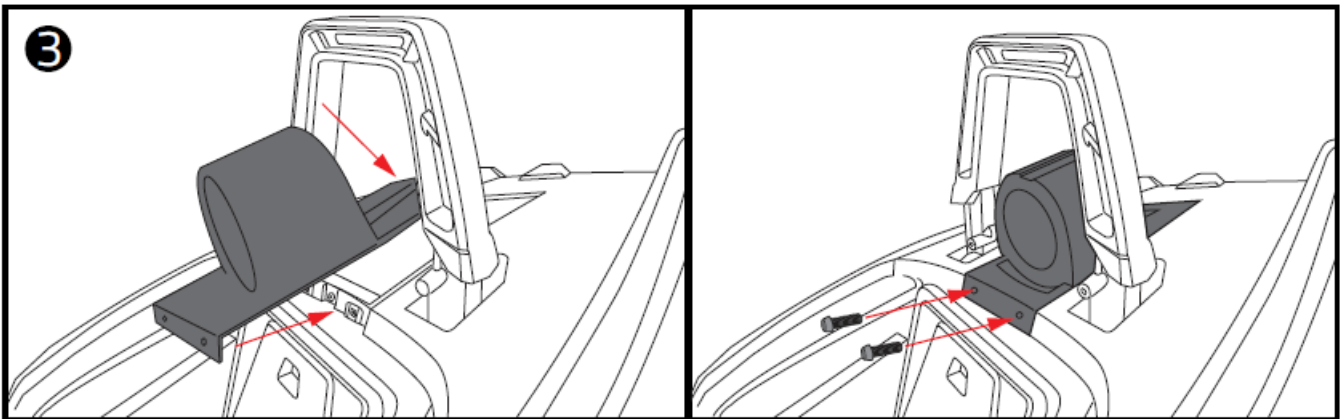
- Left & Right Speaker Pods

INSTALLATION

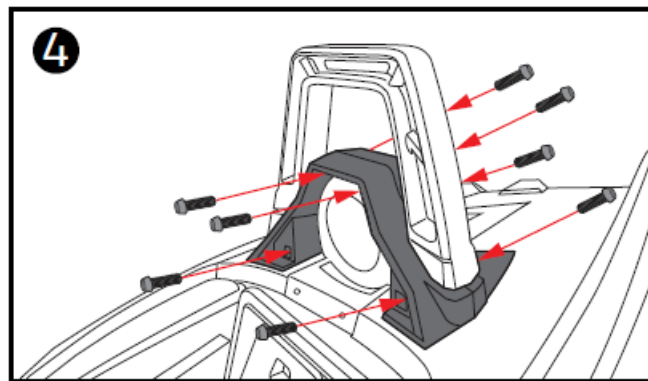
Starting with the passenger side, Remove the factory rear deck hump using a T25 TORX socket to extract the (2) screws on front bottom of the piece and pull it to the front. (Picture 1)



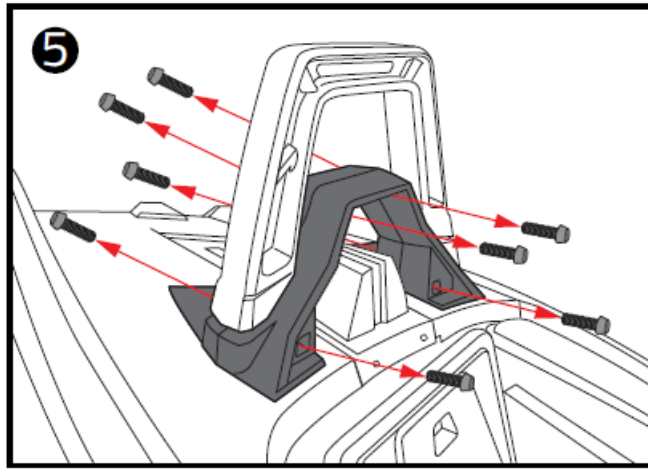
Remove the factory rear hoop accent using a T40 TORX socket to extract the (2) screws on bottom of the piece and a T25 TORX to extract the (2) screws on top of the piece and pull it to the front, then using the T40 TORX to extract the (2) screws in the back of the piece and pull it to the back. (Picture 2)



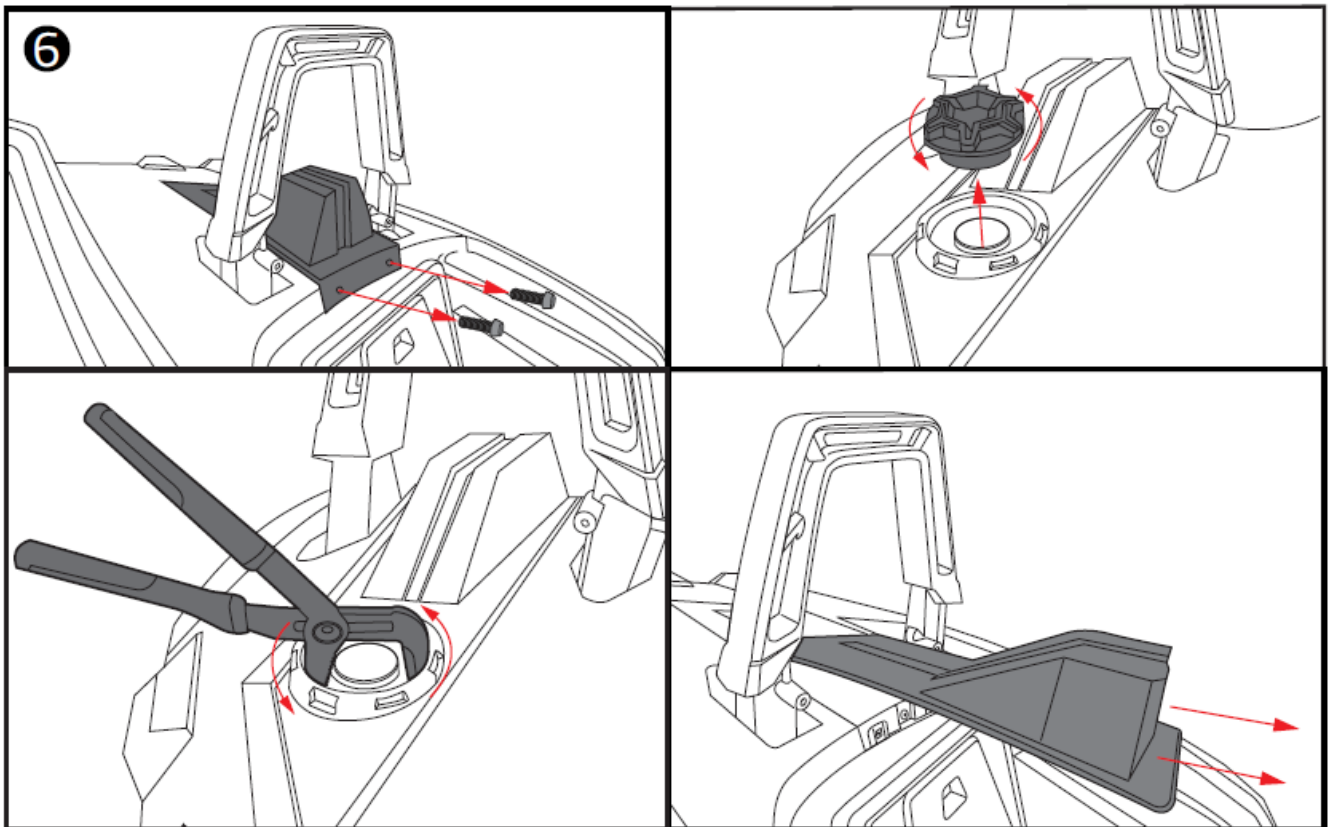
Install the new speaker pod in the same way that factory was pulled out and secure it using the factory T25 bolts on front bottom of the piece. (Picture 3)



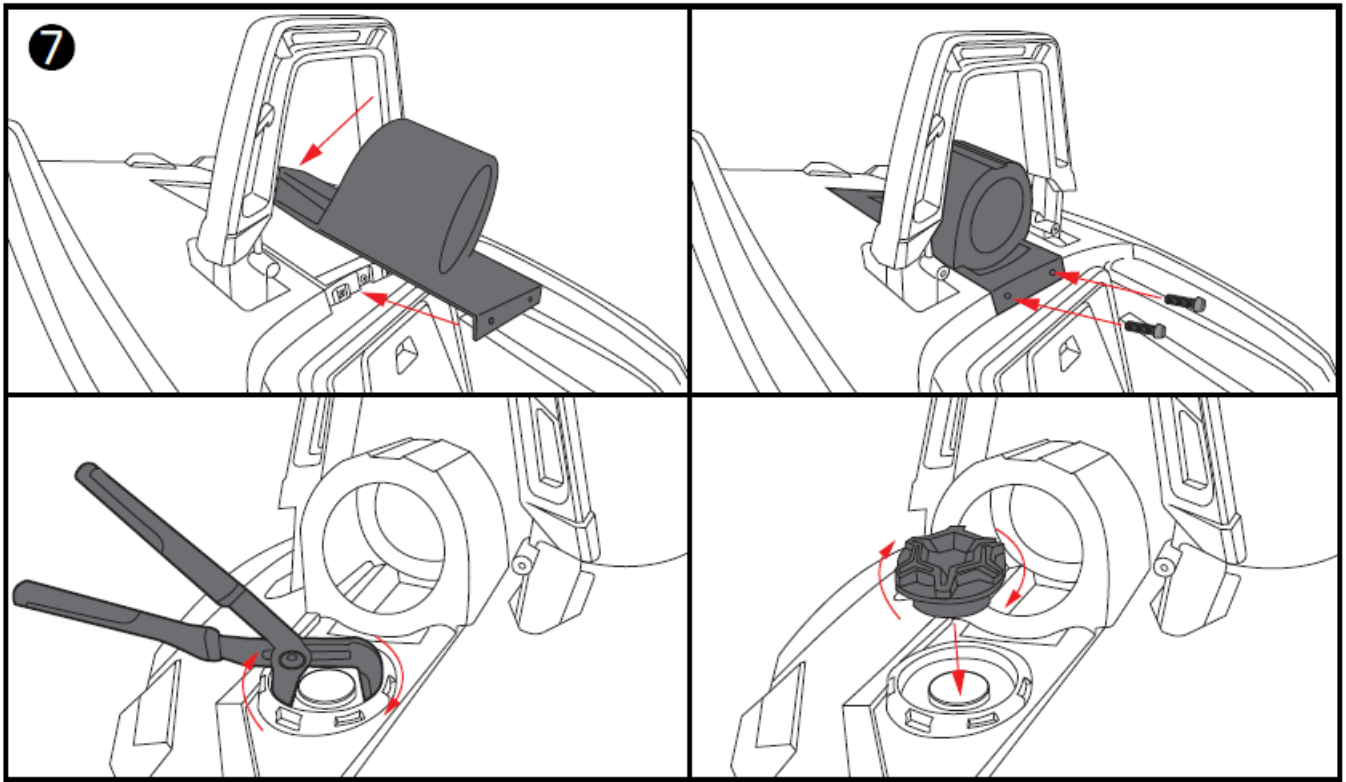
Re-install the rear hoop accent in the same way that factory was pulled out. (Picture 4)
This concludes the passenger side installation of the SLG-HD6 pod, then move next to the driver side.



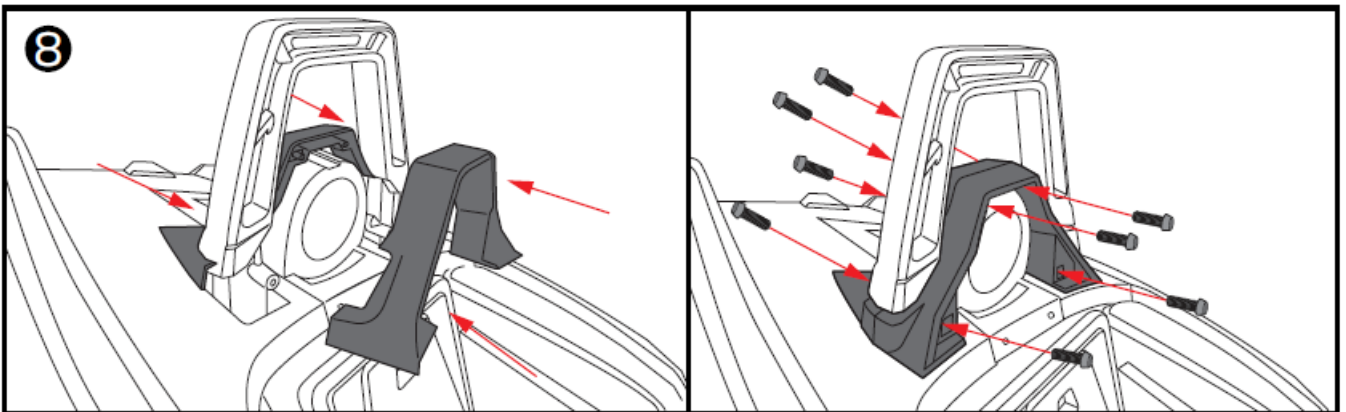
Remove the factory rear hoop accent using a T40 TORX socket to extract the (2) screws on bottom of the piece and a T25 TORX to extract the (2) screws on top of the piece and pull it to the front, then using the T40 TORX to extract the (2) screws in the back of the piece and pull it to the back. (Picture 5)



Remove the factory rear deck hump using a T25 TORX socket to extract the (2) screws on front bottom of the piece, then remove the gas cap and using an oversized pliers, un-screw the Ring-Nut that holds the gas tube in place, after this you can pull out the piece. (Picture 6)



Now, carefully slide in the new speaker pod in place and secure it using the factory T25 bolts on front bottom of the piece, then re-install the Ring-Nut and the gas cap. (Picture 7)



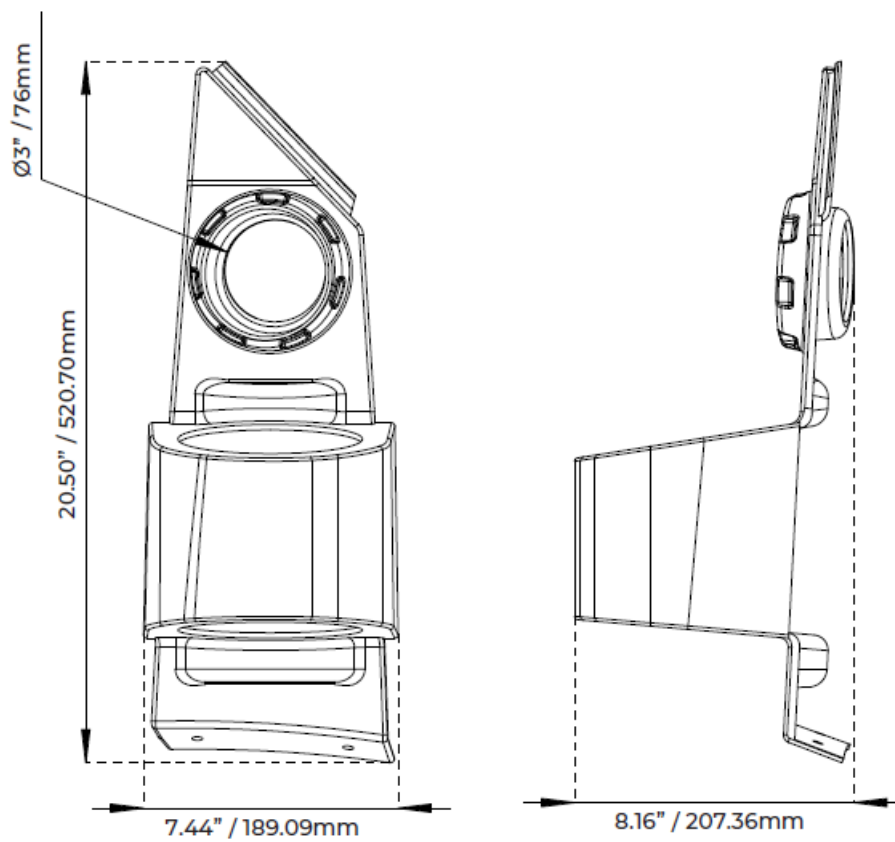
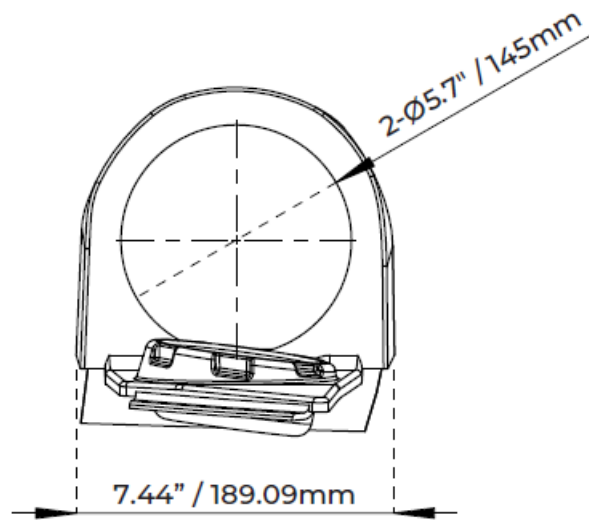
Re-install the rear hoop accent in the same way that was pulled out. (Picture 8)

This kit needs an aftermarket amp pre-installed with the speaker wires in this location, only after this step can you install the speakers using the aftermarket amp's speaker wire and RGB LED wires (optional) of the LED module (LED -BTC not included). Secure the speakers using stainless steel screws and tighten them, be careful not to over-tighten or the hole may be damaged and not properly secure the speakers.

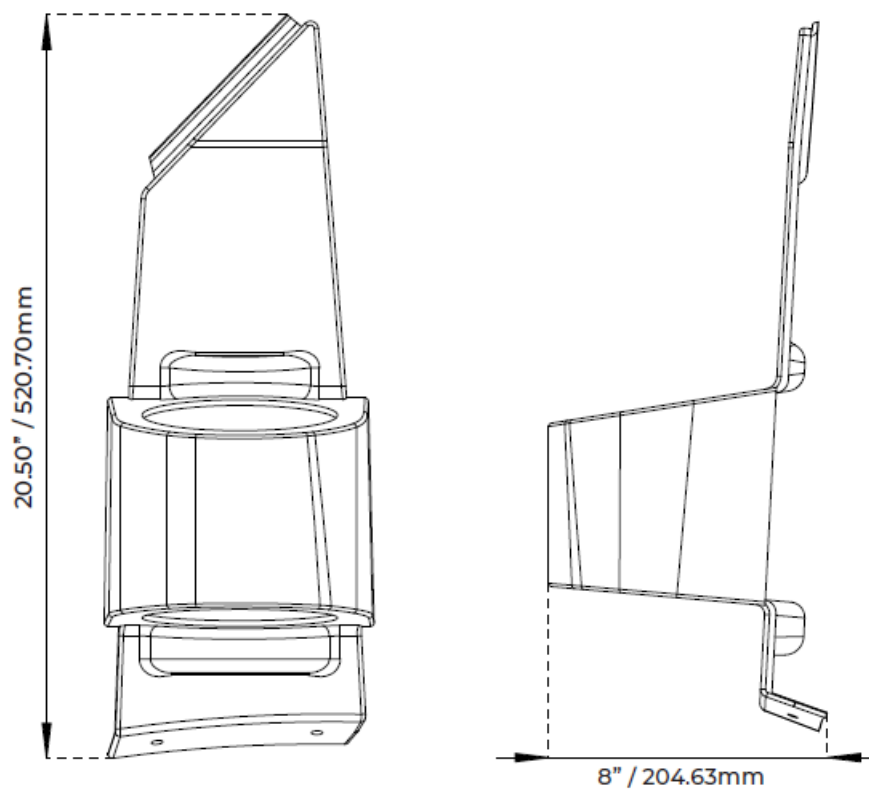
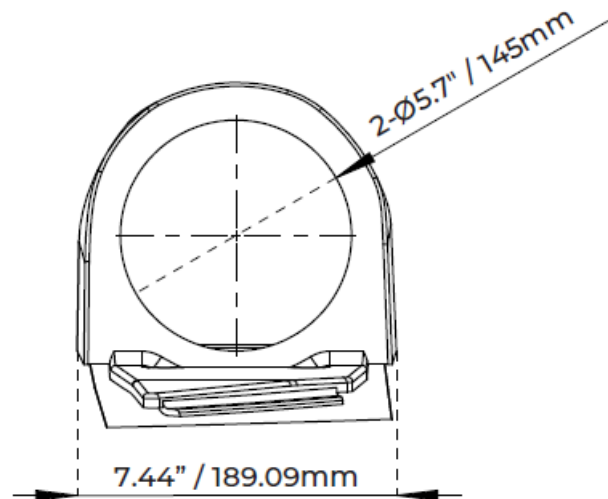
This concludes the installation of the SLG-HD6 and it is ready to enjoy your new sound system upgrade!

MEASUREMENTS

DRIVER SIDE



PASSENGER Side



WARRANTY

Please visit our website DS18.com for more information on our warranty policy.

We reserve the right to change products and specifications at any time without notice. Images may or may not include optional equipment.

WARNING:

Cancer and Reproductive Harm.

www.P65Warning.ca.gov

FOR MORE INFORMATION PLEASE VISIT

DS18.COM

Documents / Resources



[DS18 SLG-HD6 Polaris Slingshot Front and Rear Facing Headrest Pods](#) [pdf] Owner's Manual

SLG-HD6 Polaris Slingshot Front and Rear Facing Headrest Pods, SLG-HD6, Polaris Slingshot Front and Rear Facing Headrest Pods, Slingshot Front and Rear Facing Headrest Pods, Front and Rear Facing Headrest Pods, Facing Headrest Pods, Headrest Pods, Pods