



DS18 SLG-AR6V2 Polaris Slingshot Inside Armrest Speaker Pods Owner's Manual

[Home](#) » [DS18](#) » DS18 SLG-AR6V2 Polaris Slingshot Inside Armrest Speaker Pods Owner's Manual 

Contents

- [1 DS18 SLG-AR6V2 Polaris Slingshot Inside Armrest Speaker Pods](#)
- [2 INTRODUCTION](#)
- [3 FEATURES](#)
- [4 SPEAKERS PARAMETERS](#)
- [5 WHAT'S IN THE BOX](#)
- [6 BEFORE BEGINNING INSTALLATION](#)
- [7 INSTALLATION](#)
- [8 PASSENGERS AND DRIVERS SIDE CONNECTION](#)
- [9 MEASUREMENTS](#)
- [10 WARRANTY](#)
- [11 Documents / Resources](#)
 - [11.1 References](#)



DS18 SLG-AR6V2 Polaris Slingshot Inside Armrest Speaker Pods



POLARIS SLINGSHOT INSIDE ARMREST SPEAKER PODS FOR 6.5" SPEAKERS

PODS PARA ALTAVOCES DE 6.5" PARA EL REPOSABRAZOS INTERIOR DEL POLARIS SLINGSHOT

INTRODUCTION

Maximize the sound in your Polaris Slingshot with these upgraded inside armrest pods by DS18. These pods come in pairs and allow you to mount one 6.5" speaker on each side of your Slingshot. They are very easy to install using factory bolts that fit directly into place.

FEATURES

- New Exclusive Digital LED Lighting Design.
- Pods Sold as a Set for Driver and Passenger Sides
- Easy to install using OEM bolts and location.
- Fits Slingshot Models from 2015- to Current
- Fits most 6.5" DS18 Speakers. (not included)
- Durable ABS waterproof Plastic Panels with UV Protection
- Open Baffle Speaker Pod Design.
- Black Finish



SPEAKERS PARAMETERS

- Speaker Mounting Hole: 5.7" / 145mm.
- Speaker Mounting Depth: Up to 2.4" / 62mm.

WHAT'S IN THE BOX

- Left & Right Speaker Pods.
- Wire Harness for Digital LED lighting

BEFORE BEGINNING INSTALLATION

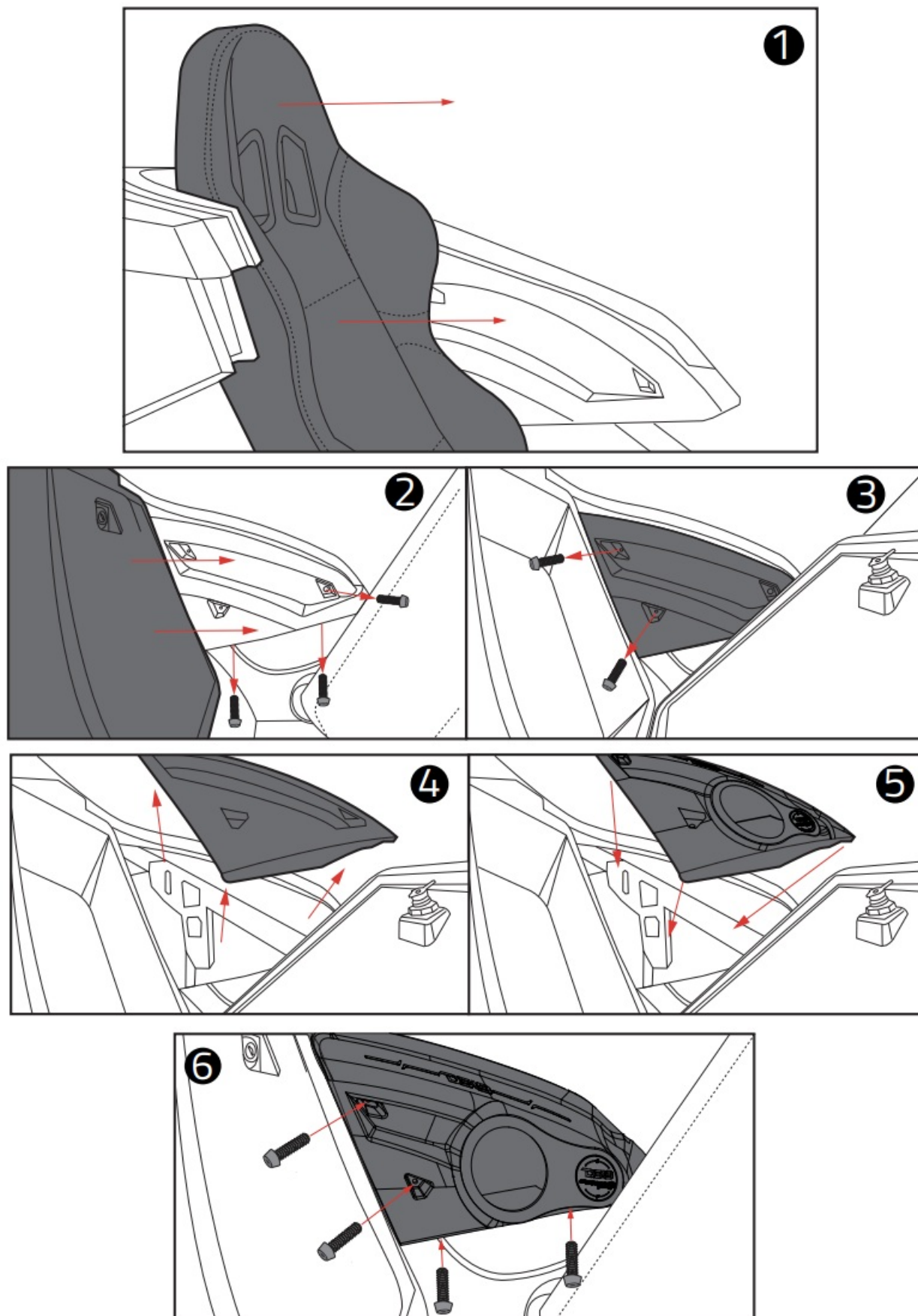
READ THESE INSTRUCTIONS CAREFULLY

This kit requires an aftermarket amplifier with the speaker wires routed to the installation location. Following this step, install the speakers. Connect them using the previously installed speaker wires. If RGB LED speakers are being used, refer to the RGB LED module's manual for proper connection. Secure the speakers using stainless steel screws and tighten them, be careful not to over-tighten or the hole may be damaged and not properly secure the speakers.

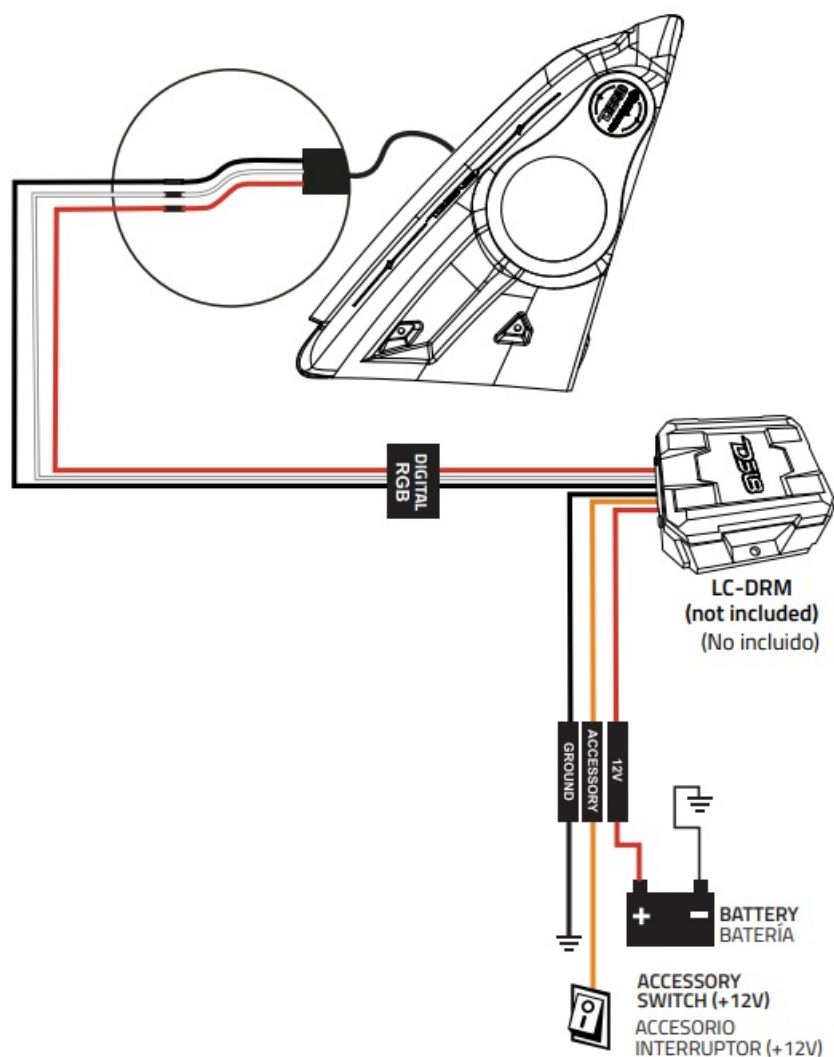
INSTALLATION

- Start by moving the seat all the way forward for easy access to this area. (Removal of the seats for easier installation on both driver and passenger sides of the vehicles is optional) (Picture 1)
- Remove the factory panel inside the armrest using a T40 TORX Socket to loosen the (2) screws under the piece, you can open the storage compartment door to get better access to the screws in the back of this panel. (Picture 2), (Picture 3), (Picture 4)
- Install the new SLG-AR6V2 Pods in the same manner that the factory panel was removed. (Picture 5)
- Run the wires to the rear panel and re-install all the screws in the same manner that the factory screws were removed. (Picture 6)

- This concludes the installation of the SLG-AR6V2! Enjoy your new upgrade!



PASSENGERS AND DRIVERS SIDE CONNECTION



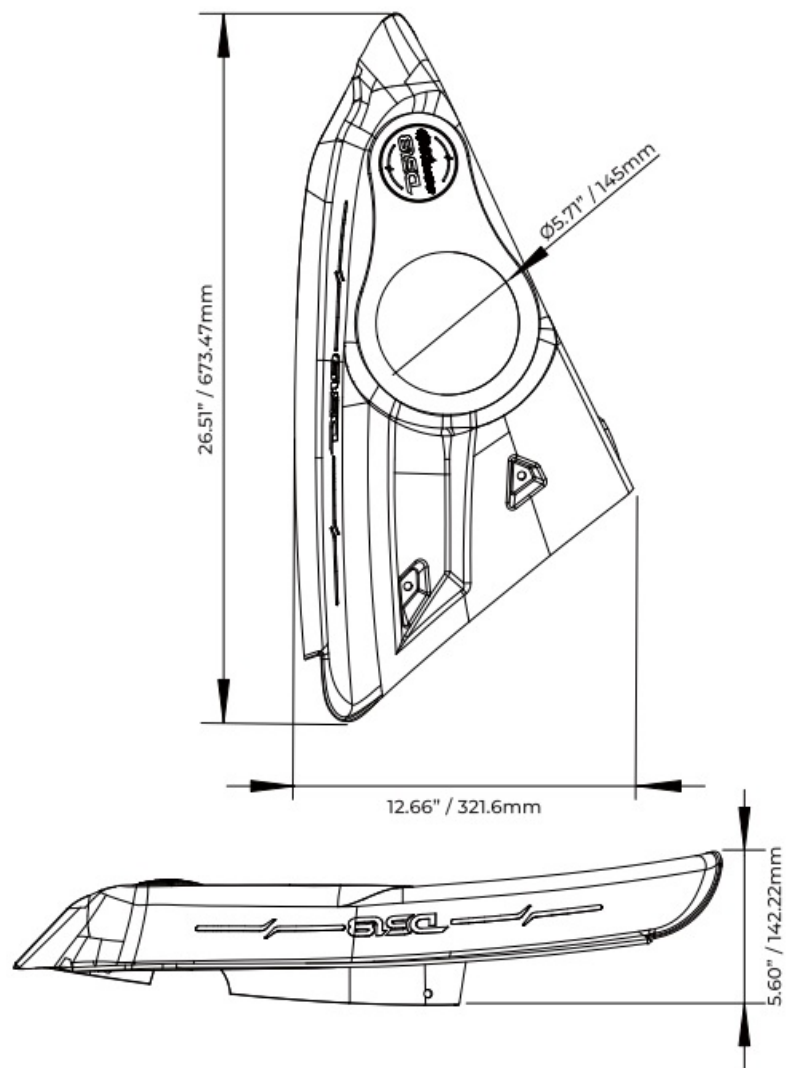
Download the DS18 LC APP compatible with the DS18 LC-DRM module. This App works with both Android and iPhone.

- Red LED +12V / Rojo LED +12V
- White LED DATA / Blanco LED DATA
- Black LED GND / Negro LED Tierra

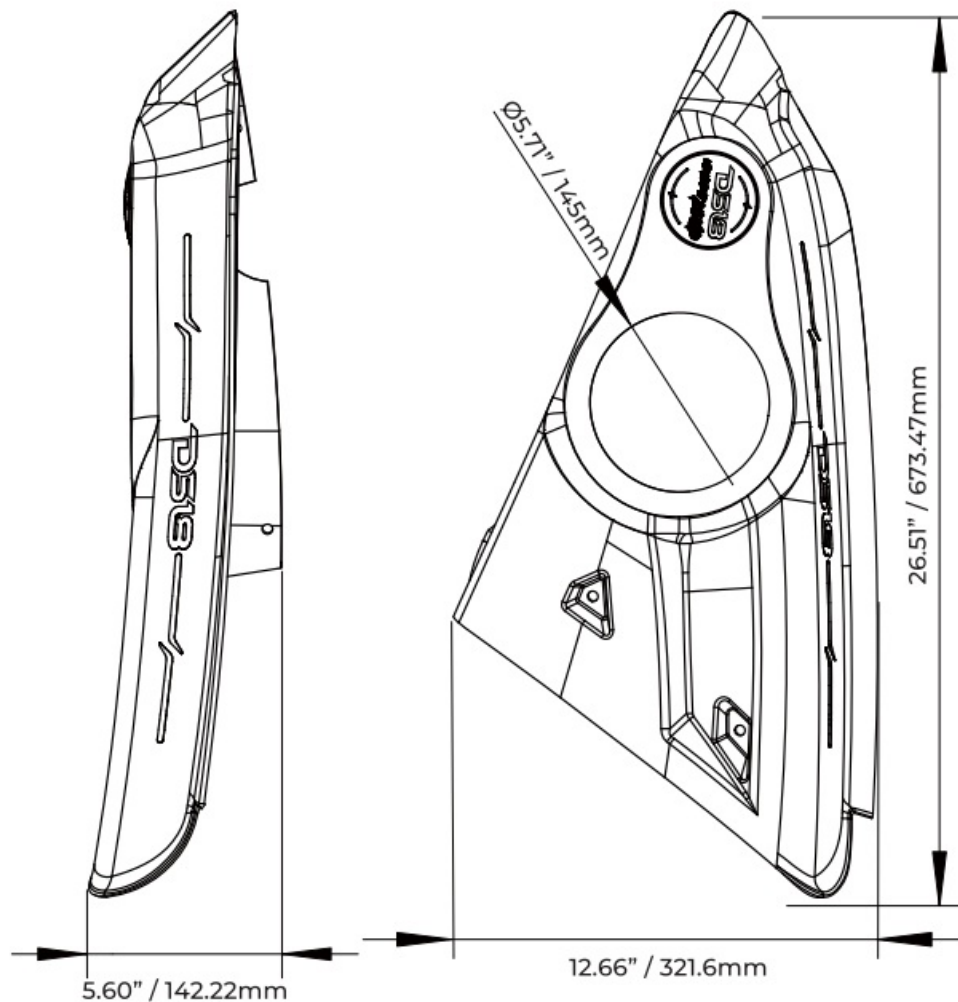
- Black GROUND (-) / Negro Tierra (-)
- Orange ACC (+) / Naranja ACC (+)
- Red (+12V) / Rojo (+12V)

MEASUREMENTS

DRIVER SIDE



PASSENGER side



WARRANTY

Please visit our website [DS18.com](https://www.ds18.com) for more information on our warranty policy

- We reserve the right to change products and specifications at any time without notice. Images may or may not include optional equipment.
- **WARNING:** Cancer and Reproductive Harm. www.P65Warning.ca.gov

Documents / Resources

	<p>DS18 SLG-AR6V2 Polaris Slingshot Inside Armrest Speaker Pods [pdf] Owner's Manual SLG-AR6V2, SLG-AR6V2 Polaris Slingshot Inside Armrest Speaker Pods, Polaris Slingshot Inside Armrest Speaker Pods, Slingshot Inside Armrest Speaker Pods, Inside Armrest Speaker Pods, Armrest Speaker Pods, Speaker Pods</p>
--	--

References

- [User Manual](#)

This website is an independent publication and is neither affiliated with nor endorsed by any of the trademark owners. The "Bluetooth®" word mark and logos are registered trademarks owned by Bluetooth SIG, Inc. The "Wi-Fi®" word mark and logos are registered trademarks owned by the Wi-Fi Alliance. Any use of these marks on this website does not imply any affiliation with or endorsement.