



# DS18 SLG-AR6 Polaris Slingshot Inside Armrest Speaker Owner's Manual

[Home](#) » [DS18](#) » DS18 SLG-AR6 Polaris Slingshot Inside Armrest Speaker Owner's Manual 

## Contents

- [1 DS18 SLG-AR6 Polaris Slingshot Inside Armrest Speaker](#)
- [2 Polaris Slingshot Inside Armrest Speaker Pods](#)
- [3 INTRODUCTION](#)
- [4 INSTALLATION](#)
- [5 MEASUREMENTS](#)
- [6 WARRANTY](#)
- [7 Documents / Resources](#)
- [8 Related Posts](#)



**DS18 SLG-AR6 Polaris Slingshot Inside Armrest Speaker**



### **Polaris Slingshot Inside Armrest Speaker Pods**

The Polaris Slingshot Inside Armrest Speaker Pods are specially designed for the Polaris Slingshot vehicle. These durable Polyethylene pods allow you to mount one 6.5" speaker (not included) and one 3.8" Super Bullet tweeter (not included) on each side, providing an enhanced stereo system experience.

#### **Features:**

- Designed for Polaris Slingshot
- Durable Polyethylene construction
- Mounts one 6.5" speaker and one 3.8" Super Bullet tweeter on each side
- Easy installation using factory bolts

#### **What's in the Box:**

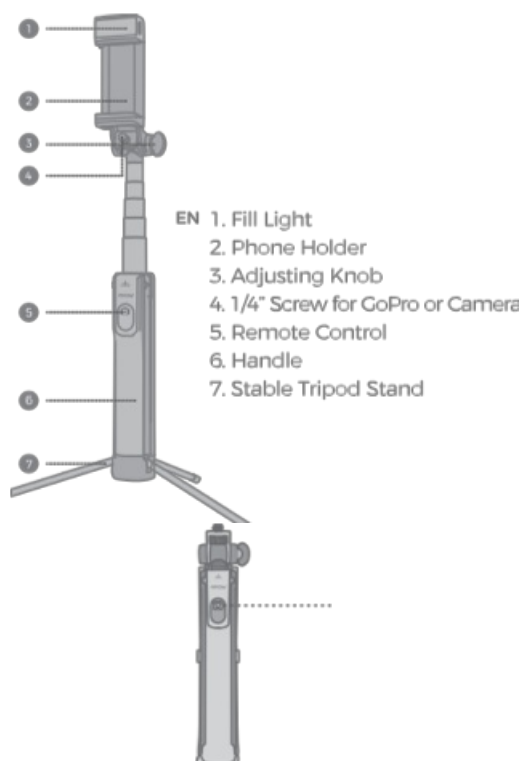
- 2 x Polaris Slingshot Inside Armrest Speaker Pods

#### **Installation:**

1. Step 1: Start by moving the seat all the way forward for easy access to the installation area. (Removal of the seats for easier installation is optional)



1. Remove the factory speakers inside the armrest panel using a T40 TORX Socket to loosen the (2) screws under the piece. You can open the storage compartment door to get better access to the screws in the back of this panel.



1. Remove the factory panel and install the new SLG-AR6 Pods in the same way that the factory panel was pulled out.





1. Run the wires to the rear panel and re-install all the screws in the same way that the factory panel was pulled out.



Once the installation is complete, you are ready to enjoy your new sound system upgrade!

**Measurements:****Driver Side:**

- **Width:** 12.66" / 321.6mm
- **Height:** 5.60" / 142.22mm

**Passenger Side:**

- **Width:** 26.51" / 673.47mm
- **Height:** 5.60" / 142.22mm

**Warranty:**

Please visit our website [DS18.com](https://www.ds18.com) for more information on our warranty policy.

**WARNING:** Cancer and Reproductive Harm. [www.P65Warning.ca.gov](https://www.P65Warning.ca.gov)

**ADVERTENCIA:** FOR MORE INFORMATION PLEASE VISIT [DS18.COM](https://www.ds18.com)

**INTRODUCTION**

If you're looking to maximize sound in your Polaris Slingshot, you may consider adding these durable Polyethylene inside armrest pods by DS18. These pods allow you to mount one 6.5" Speakers (not included) and one 3.8" Super Bullet tweeter (not included) on each side that your stereo system deserves. These pods come in pairs (Driver & Passenger) and they are very easy to install using factory bolts that fits directly into place.

**FEATURES**

- Pods Sold as a Set for Driver and Passenger Sides
- Easy to install using OEM bolts and location.
- Fits Slingshot Models from 2015 or later
- Fits any 6.5" DS18 Speakers. (not included)
- Fits any 3.8" DS18 Bullet Tweeter. (not included)
- Durable (PE) waterproof Plastic Panels with UV Protection
- Open Baffle Speaker Pod Design
- Black Finish

## **SPEAKERS PARAMETERS**

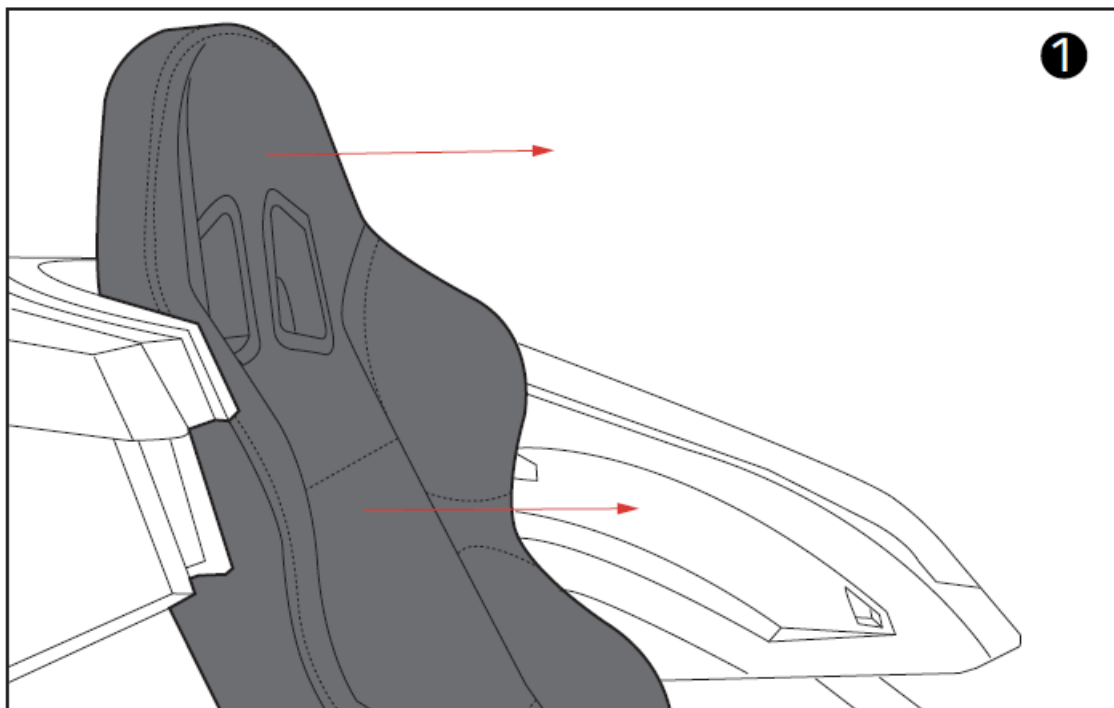
- Speaker Mounting Hole: 5.7" / 145mm.
- Speaker Mounting Depth: Up to 2.4" / 62mm.
- Tweeter Mounting Hole: 2.9" / 74mm.
- Tweeter Mounting Depth: Up to 1.6" / 42mm.

## **WHAT'S IN THE BOX**

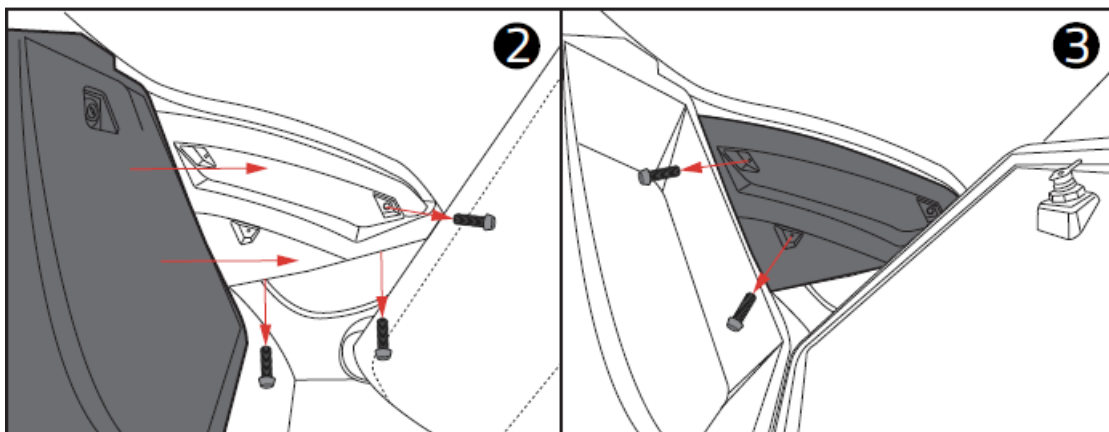
- Left & Right Speaker Pods

## **INSTALLATION**

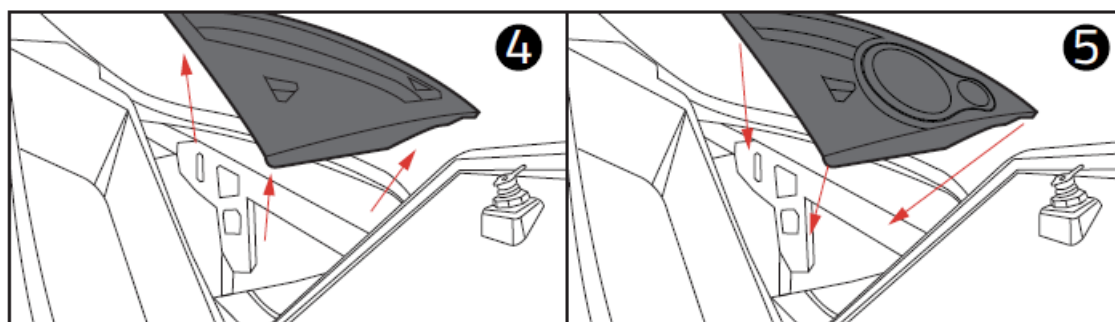
1. Start by moving the seat all the way forward for easy access to this area. (Removal of the seats for easier installation on both driver and passenger sides of the vehicles is OPTIONAL) (Picture 1)



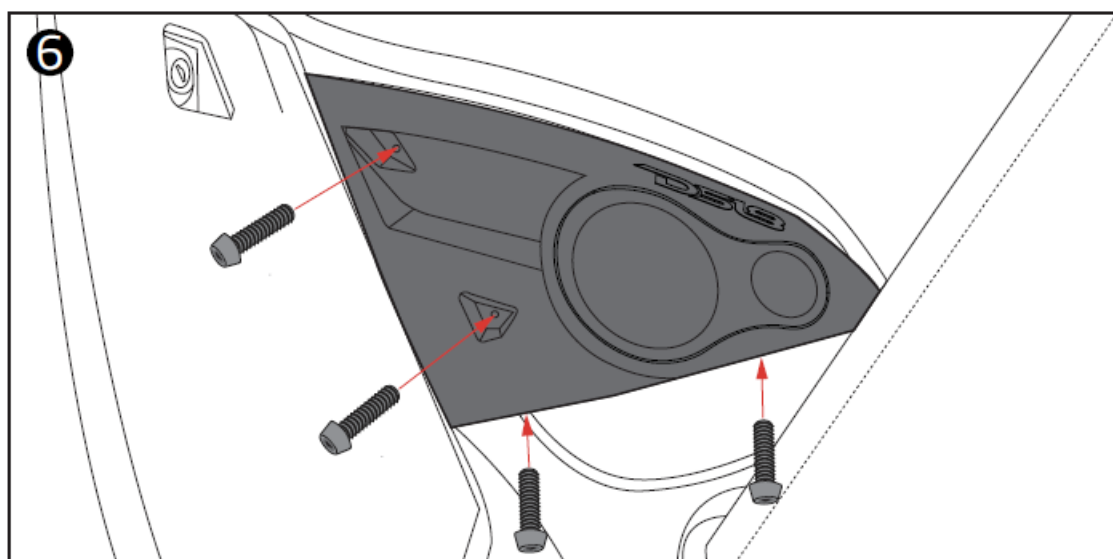
2. Remove the factory speakers inside the armrest panel using a T40 TORX Socket to loosen the (2) screws under the piece, you can open the storage compartment door to get better access to the screws in the back of this panel. (Picture 2) (Picture 3)



3. Remove the factory panel and install the new SLG-AR6 Pods the same way that factory was pulled out.  
(Picture 4) (Picture 5)



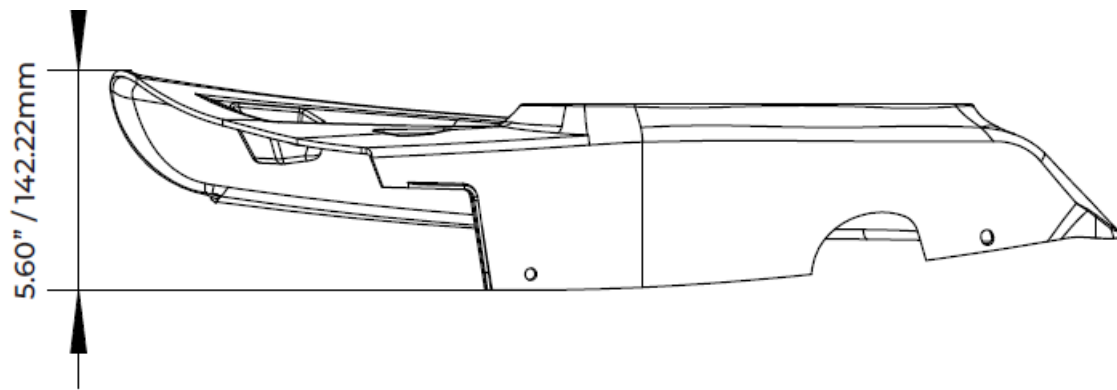
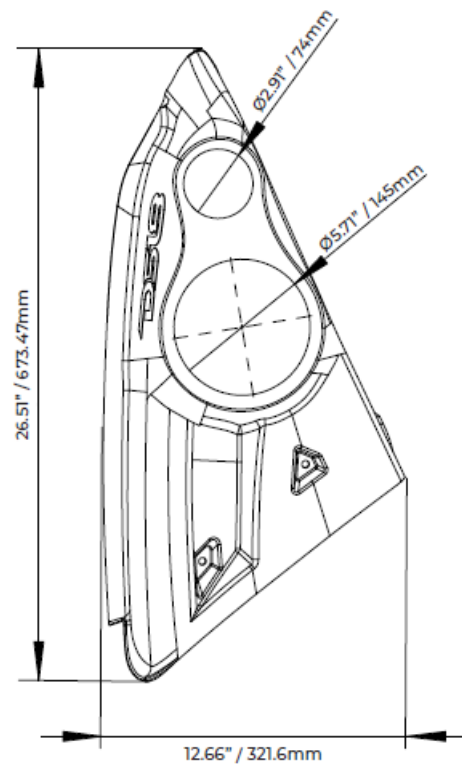
4. Run the wires to the rear panel and Re-install all the screws in the same way that factory was pulled out.  
(Picture 6)



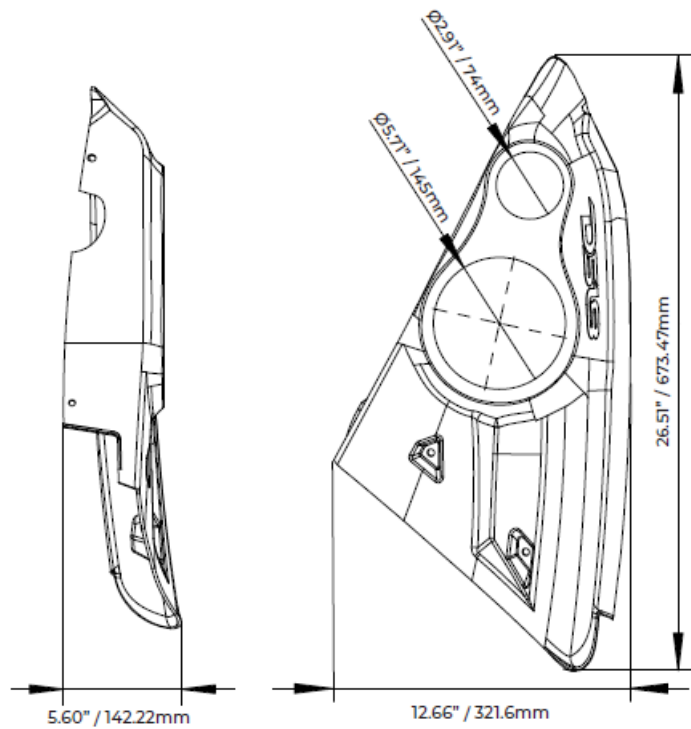
This concludes one side installation of the SLG-AR6 pod, then repeat the steps 2-4 for the other side. This kit needs an aftermarket amp pre-installed with the speaker wires in this location, only after this step can you connect the speakers using the aftermarket amp's speaker wire and RGB LED wires (optional) of the LED module (LED - BTC not included). Install the speakers using the speaker wires previously installed, use the same line to connect the tweeter and make sure to use a bass blocker filter to it, if you are using RGB led speakers connect it to the RGB wiring harness. Secure the speakers using stainless steel screws and tighten them, be careful not to over-tighten or the hole may be damaged and not properly secure the speakers. This concludes the installation of the SLG-AR6 and it is ready to enjoy your new sound system upgrade!

## MEASUREMENTS

### DRIVER SIDE



**PASSENGER Side**



## WARRANTY

Please visit our website [DS18.com](http://DS18.com) for more information on our warranty policy.

We reserve the right to change products and specifications at any time without notice. Images may or may not include optional equipment.

## WARNING:

Cancer and Reproductive Harm.

[www.P65Warning.ca.gov](http://www.P65Warning.ca.gov)

FOR MORE INFORMATION PLEASE VISIT

[DS18.COM](http://DS18.COM)

## Documents / Resources



[DS18 SLG-AR6 Polaris Slingshot Inside Armrest Speaker](#) [pdf] Owner's Manual

SLG-AR6 Polaris Slingshot Inside Armrest Speaker, SLG-AR6, Polaris Slingshot Inside Armrest Speaker, Slingshot Inside Armrest Speaker, Inside Armrest Speaker, Armrest Speaker, Speaker