



## DS18 SDX-P200 Digital Media Player Owner's Manual

[Home](#) » [DS18](#) » DS18 SDX-P200 Digital Media Player Owner's Manual 



### SDX-P200 OWNER'S MANUAL



SDX-P200  
**SINGLE DIN DIGITAL MEDIA RECEIVER WITH DSP / BLUETOOTH / USB  
/ APP / AUX & BUILTIN HIGH POWER AMPLIFIER**

## Contents

|      |                                      |
|------|--------------------------------------|
| 1    | SDX-P200 Digital Media Player        |
| 2    | FEATURES                             |
| 3    | PREVENTIVE MEASURE                   |
| 4    | WHAT'S IN THE BOX?                   |
| 5    | DEVICE INSTALLATION                  |
| 6    | WIRING THE POWER SUPPLY              |
| 7    | RCA PRE-OUTPUT CONFIGURATION MODES   |
| 8    | PANEL DESCRIPTION                    |
| 9    | REMOTE CONTROL                       |
| 10   | BASIC OPERATION                      |
| 11   | SETTING MENU                         |
| 12   | FUNCTION OPERATION                   |
| 13   | USB                                  |
| 14   | BLUETOOTH                            |
| 15   | AUX                                  |
| 16   | STEERING WHEEL BUTTON<br>PROGRAMMING |
| 17   | FUNCTION OPERATION DS18 SDX APP      |
| 18   | TECHNICAL SPECIFICATIONS             |
| 19   | OVERALL DIMENSIONS                   |
| 20   | WARRANTY                             |
| 21   | Documents / Resources                |
| 21.1 | References                           |

## SDX-P200 Digital Media Player



Thank you for using our DS18 Digital Media player! To operate the unit correctly, please read the operation manual carefully before using. Keep this operation manual for further reference.

## FEATURES

### GENERAL

- Digital Media (Mech-Less) Receiver
- Single DIN in Dash Mounting
- AM/FM Radio with 30 Memory Stations
- USB Reader up to 64GB
- Media Files Supported: FLAC, WAV, AAC, APE, MP3.

### DISPLAY

- 4" LCD Dots Display
- 3-Zone RGB Illumination
- Dynamic Multi-Color LED Backlight

## **AUDIO**

- High Power Amplifier Built-in
- 180W x 4 Max Power Output
- DSP with Time Alignment and 2/3Way X-Over
- 24 Bands Graphic Equalizer
- Volume/Subwoofer/Loudness/Balance /Fader Control
- Front/Rear/Sub-W Hi-Volt RCA Pre-Output

## **CONNECTIVITY**

- App Remote to Control your Receiver with your Smartphone
- Bluetooth Audio Streaming and Hands Free for Cell Phones
- Wired Remote Input for Steering Wheel Control Interface
- USB Port in Front with 1Amp Charger
- Front Audio Jack Input
- External Mic Included

## **PREVENTIVE MEASURE**

The user manual contains important safety recommendations and information on the correct use of the appliance. Please follow all the instructions in this manual carefully.

1. When installing the unit, avoid places with high temperatures, humidity, or where there is a lot of dust.
2. Ensure that the appliance, and in particular its installation accessories, are out of the reach of children.
3. Do not drop the appliance and make sure it is not subjected to shocks as this could damage it.
4. The manufacturer accepts no liability for any loss of data resulting from damage to this appliance, its repair or any other cause.
5. Do not disassemble the appliance yourself. This may invalidate the warranty.
6. Do not use alcohol, solvents or benzine to clean the plastic parts and the unit display. Use only a dry, soft cloth for cleaning.
7. Avoid contact with liquids.
8. The product is only designed for use with 12 volt electrical systems with a negative earth ground. Use in systems with a positive earth and/or voltage other than 12 volts may cause damage to the vehicle and the unit.

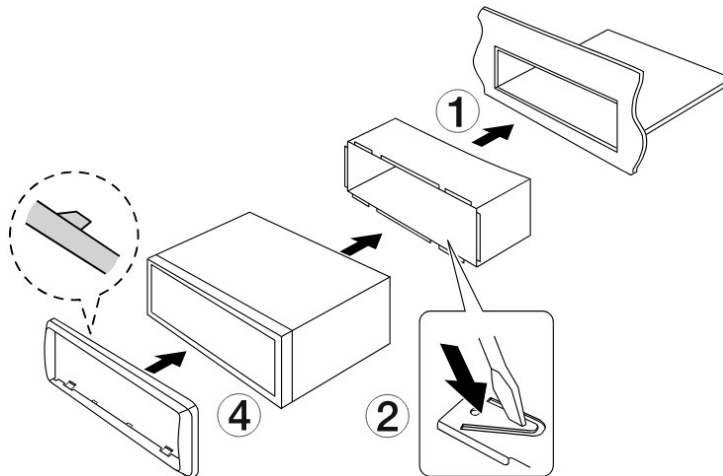
## **WHAT'S IN THE BOX?**

1. Main Unit – 1pc.
2. Remote control – 1pc.
3. Wrenches for removing the receiver – 2 pcs.

4. ISO socket – 1pc.
5. Cage and Frame – 1pc
6. User's Manual.

## DEVICE INSTALLATION

### 3 Wiring Connections



1. Fit the installation shell in the 1DIN standard hole provided by the manufacturer. In the case of 2DIN installation locations, use adapter frames or 1-DIN drawers / Covers to fill the space.
2. Bend the metal tabs on the mounting cover outwards with a screwdriver to lock it in place.
3. Check the electrical connections, connector or individual wiring harnesses (depending on the model-specific equipment). Plug the main connector into the unit. Check that the system is operational before fitting in the installation shell.
4. Insert the unit into the mounting sleeve and push it in until it clicks into place. In some vehicle brands(e.g. TOYOTA, HONDA,...) the unit is secured with screws to the standard brackets. In this case, the mounting cover is not used.

## WIRING THE POWER SUPPLY

1. Make sure that the on-board voltage of your vehicle is + 12 volts.
2. Before connecting the wires,remove the fuse from the device.
3. Connect the yellow PIN#10/11 wire to the + 12 volt DC power circuit.
4. Connect the red wire PIN#12 to the ACC terminal of the ignition switch.
5. Connect the black wire PIN#1/2 to the metal part of the car body.
6. Connect the blue wire PIN#3 to the amplifier's remote turn-on input or antenna control input.
7. Connect the remaining wires according to the diagram.

### NOTE:

To avoid high current consumption and unstable receiver operation, when connecting the red wire PIN#12 to +12V DC (together with the yellow PIN#10/11), set the "POWER SAVE" function in the "SYSTEM" menu to "YES"!

## RCA PRE-OUTPUT CONFIGURATION MODES

## MODE 2 WAY (NORMAL)

SUB – RCA subwoofer

FL – RCA front (left)

FR – RCA front (right)

RL – RCA rear (left)

RR – RCA rear (right)

## MODE 3 WAY (NETWORK)

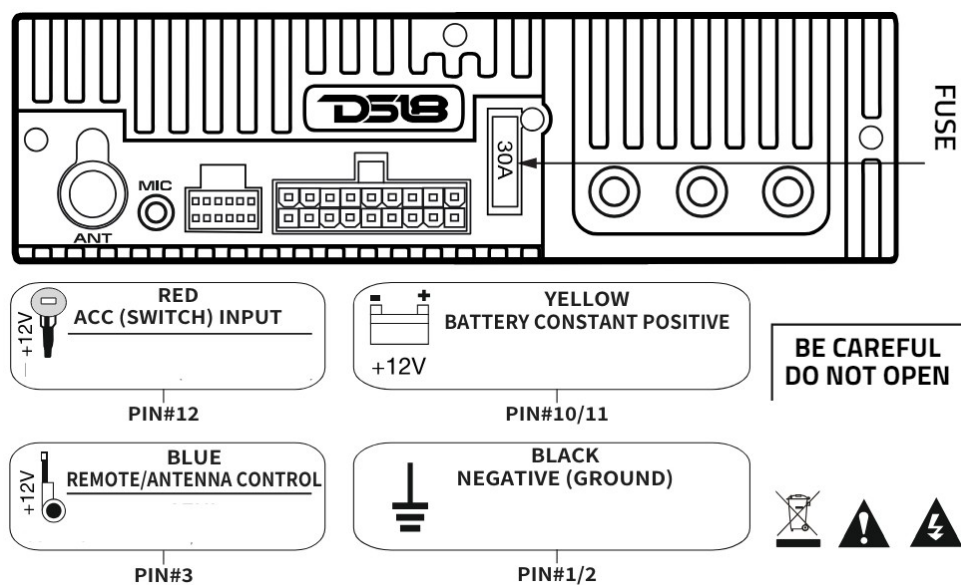
SUB – RCA subwoofer

FL – RCA midrange (left)

FR – RCA midrange (right)

RL – RCA tweeter (left)

RR – RCA tweeter (right)



1. ANT – Radio antenna connection input (not included)
2. MIC – External microphone input (Included)
3. SWC – Steering Wheel Control or Wired Remote Control Input

## FRONT SPEAKER OUTPUT

PIN#15 Right channel+(gray)

PIN#6 Right channel-(gray and black)

PIN#16 Left channel+(white)

PIN#7 Left channel-(black and white)

## REAR SPEAKER OUTPUT

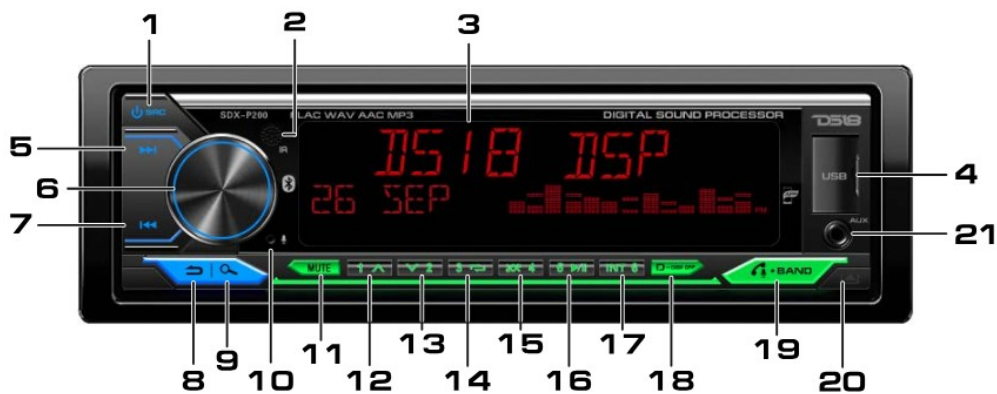
PIN#17 Right channel+(purple)

PIN#8 Right channel-(purple and black)

PIN#18 Left channel+(green)

PIN#9 Left channel-(green and black)

## PANEL DESCRIPTION



1. Power the device on / off / Source selection
2. IR receiver
3. LCD display
4. USB connector
5. Next track / Fast forward / Radio tuning
6. Volume control / Toggle settings / Confirm selection
7. Previous track / Rewind / Radio tuning
8. Return / Go Back
9. Search
10. Microphone
11. Mute the sound
12. Preset button 1 / Next folder
13. Preset button 2 / Previous folder
14. Preset button 3 / Repeat mode
15. Preset button 4 / Random playback mode
16. Preset button 5 / Pause
17. Preset button 6 / Track scan mode
18. Type of display information / Display off
19. Receiving / Ending a call / Voice assistant / Switching radio bands FM 1/2/3, AM1/2)
20. Eject and detach the Front panel
21. AUX input

## REMOTE CONTROL



1. Turning the device on / off
2. Adjusting volume
3. Switching radio bands / Receiving a call
4. Previous track / Rewind / Radio tuning
5. Selecting source
6. Next track / Fast forward / Radio tuning
7. Muting the sound (Mute)
8. End call / Clock
9. Preset button 1 / Pause
10. Preset button 2 / Track scan mode
11. Preset button 3 / Repeat mode
12. Preset button 4 / Random play mode
13. Preset button 5 / Skips back 10 tracks
14. Preset button 6 / Advance 10 tracks
15. Radio station reception mode (mono /stereo)
16. Tone compensation (LOUD)
17. Scanning stations in memory / Automatic search and memorize sations (AMS)
18. Selecting source
19. Selecting equalizer presetting
20. Tuner sensitivity off (LOC)

### USING THE REMOTE CONTROL(RC)

- Position the R/C transmitter window in the direction of the sensor window on the unit.
- The working angle for receiving R/C signals is about 30 degrees.
- The distance between the radiant window of the R/C and the sensor window of the unit must be less than 5

metres.

- A dead battery can damage the remote control.
- Keep the batteries out of the reach of children!

## REPLACING REMOTE BATTERY

Remove the battery protector (CR-2025).

The remote control is supplied with battery protection. The remote control will not operate unless the protection is removed.


Replacing the battery:

When the lithium battery has lost capacity, replace it as shown in the illustration.

1. Pull the cell holder from the remote control in the direction of arrow 1.
2. Replace the old battery with a new one. Observe the polarity! Make sure the (+) is at the top!
3. Insert the battery holder into the remote control.

## BASIC OPERATION

Press any button to switch the unit on.

Press and hold button (1)  / SRC to switch off. Turn the volume knob to set the desired level. Press button (1)

 / SRC to switch between playback sources: Radio → USB → AUX in → Bluetooth.

## SETTING MENU

### SETTING MENU

Press the volume knob (6) and turn to select the desired section of AUDIO, DISPLAY, TUNER, SYSTEM, BLUETOOTH settings.

Press the volume knob to select the desired section.

#### AUDIO – AUDIO SETTING

IMPORTANT! Before entering the AUDIO menu, while the AUDIO section is

displayed on the screen, press and hold the Volume Knob (6) to select 2-way or 3-way crossover mode.

2 WAY (normal) or 3 WAY (SQ). Next, select the speaker order: Mid, Tweeter and Woofer or Tweeter, Mid and Woofer (MTW)/(TMW), and confirm the YES/NO selection by pressing the volume control.

#### EQ SETTING (EQUALIZER)

Custom – manual adjustment of the 24-band equalizer (-9 dB to 9 dB).

Tuning is available at frequencies: 45 / 63 / 100 / 125 / 160 / 250 / 315 / 400 / 500 / 630 / 800 / 1 / 1.25 / 1.6 / 2.5 / 3.15 / 4 / 5 / 6.3 / 8 / 10 / 12.5 / 16 / 20.

EQ reset – resets the EQ settings.

Q-factor – sets the quality factor (Q-factor) value.

Settings values: 1 / 1.5 / 2.5 / 3.5.

Presets: Natural, Rock, Pop, Easy, Top 40, JAZZ, Powerfull.

#### BASS BOOST

Turns on and adjusts the bass boost (5 levels).

#### LOUDNESS (TONE COMPENSATION)

Turns on and adjusts the tone compensation (2 levels).

#### SUBWOOFER – SUBWOOFER SETTINGS:

- Sub – W output (subwoofer outputs) -turns the subwoofer on/off.
- Sub – W level – Adjusts the volume level of the subwoofer.



- Sub – W stereo – RCA subwoofer outputs operation mode (Mono/Stereo).

#### **FADER**

Adjust the relative volume between the front and rear speakers.

#### **BALANCE**

Adjusts the relative volume between the left and right channels.

#### **VOLUME LIMIT**

Select the value for the maximum possible volume (3 to 40)

#### **POWER ON VOL**

Selects the volume level when the receiver is turned on (1 to 40)

#### **X-OVER (FREQUENCY CUT)**

Set up the low-pass and high-pass filters (LPF and HPF). The settings of this menu item will be different for 2-WAY / 3-WAY.

#### **2-WAY (NORMAL)**

#### **TWEETER – TWEETER HI-PASS FILTER SETTINGS:**

- FREQUENCY – Select Cut-off Frequency: 1 / 1.6 / 2.5 / 3.15 / 4 / 5 / 6.3 / 8 / 10 / 12.5 kHz.
- GAIN LEFT – Adjust Left Channel Level From -8dB to 0dB.
- GAIN RIGHT – Adjust Right Channel Level From -8dB to 0dB.

#### **FRONT HPF – FRONT HI-PASS FILTER SETTINGS:**

- F-HPF FRQ – Select Cut-off Frequency: THROUGH (Off) / 30 / 40 / 50 / 60 / 70 / 80 / 90 / 100 / 120 / 150 / 180 / 220 / 250 / 315 / 400 / 500 / 630 / 700 / 800 Hz.
- F-HPF SLOPE – Adjust Cut-off Slope: 6 / 12 / 18 / 24 dB per octave.
- F-HPF GAIN – Adjust Volume Level From -8dB to 0dB.

#### **REAR HPF – REAR HI-PASS FILTER SETTINGS:**

- R-HPF FRQ – Select Cut-off Frequency: THROUGH (Off) / 30 / 40 / 50 / 60 / 70 / 80 / 90 / 100 / 120 / 150 / 180 / 220 / 250 / 315 / 400 / 500 / 630 / 700 / 800 Hz.
- R-HPF SLOPE – Adjust Cut-off Slope: 6 / 12 / 18 / 24 dB per octave.
- R-HPF GAIN – Adjust Volume Level From -8dB to 0dB.

#### **SUBWOOFER LPF – ADJUSTS THE LOW-PASS FILTER AND PHASE OF THE SUBWOOFER.**

- SW LPF FRQ – Select Cut-off Frequency: 30 / 40 / 50 / 60 / 70 / 80 / 90 / 100 / 120 / 150 / 180 / 220 / 250 / 315 / 400 / 500 / 630 / 700 / 800 Hz / THROUGH (Off).
- SW LPF SLOPE – Adjust Cut-off Slope: 6 / 12 / 18 / 24 dB per octave.
- SW LPF PHASE – Adjusts the output polarity or phase: 0° / 180°.
- SW LPF GAIN – Adjust Volume Level From -8dB to 0dB. 3-WAY (SQ)

#### **TWEETER – TWEETER HI-PASS FILTER SETTINGS:**

- FRQ – Select Cut-off Frequency: 500 / 630 / 700 / 800 / 1 / 1.6 / 2.5 / 3.15 / 4 / 5 / 6.3 / 8 / 10 / 12.5 kHz.
- SLOPE – Adjust Cut-off Slope: 6 / 12 / 18 / 24 dB per octave.
- PHASE – Adjusts the output polarity or phase: 0° / 180°.

- GAIN – Adjust Volume Level From -8dB to 0dB.

## **MID RANGE – ADJUSTE THE HPF AND LPF OF THE MID-RANGE SPEAKERS.**

- HPF FRQ – Select High-Pass Cut-off Frequency:  
THROUGH (Off) / 30 / 40 / 50 / 60 / 70 / 80 / 90 / 100 / 120 / 150 / 180 / 220 / 250 / 315 / 400 / 500 / 630 / 700 / 800 Hz.
- HPF SLOPE – Adjust High-Pass Cut-off Slope: 6 / 12 / 18 / 24 dB per octave.
- LPF FRQ – Select Low-Pass Cut-off Frequency: 500 / 630 / 700 / 800 / 1 / 1.6 / 2.5 / 3.15 / 4 / 5 / 6.3 / 8 / 10 / 12.5 kHz / THROUGH (OFF).
- LPF SLOPE – Adjust Low-Pass Cut-off Slope: 6 / 12 / 18 / 24 dB per octave.
- PHASE – Adjusts the output polarity or phase: 0° / 180°.
- GAIN – Adjust Volume Level From -8dB to 0dB.

## **WOOFER – ADJUSTS THE LOW-PASS FILTER AND PHASE OF THE WOOFER.**

- LPF FRQ – Select Cut-off Frequency: 30 / 40 / 50 / 60 / 70 / 80 / 90 / 100 / 120 / 150 / 180 / 220 / 250 / 315 / 400 / 500 / 630 / 700 / 800 Hz / THROUGH (Off).
- LPF SLOPE – Adjust Cut-off Slope: 6 / 12 / 18 / 24 dB per octave.
- LPF PHASE – Adjusts the output polarity or phase: 0° / 180°.
- GAIN – Adjust Volume Level From -8dB to 0dB.

## **X'OVER RESET**

**Resets the crossover settings.**

## **DTA SETTING**

### **(DIGITAL TIME ALIGNMENT)**

Channel-by-channel setting of the signal time delays. The settings of this menu item will be different for 2-WAY / 3-WAY configurations!

**IMPORTANT!** The delay setting starts at the farthest speaker from the listening position (usually the subwoofer). The farthest speaker does not need any further delay. The other speakers should be adjusted according to the difference between the distance from the farthest speaker and the distance from the calculated speaker to the listening position. Make the necessary calculations for all speakers, then make the settings in the app or in the receiver menu.

## **2-WAY (NORMAL)**

### **POSITION – SELECT THE LISTENING POSITION:**

- ALL – listening position from all seats.
- FRONT LEFT – listening position from the left front seat.
- FRONT RIGHT – listening position from the right front seat.
- FRONT ALL – listening position from the two front seats.

### **DISTANCE – SELECT THE DISTANCE OR TIME DELAY ON EACH SPEAKER:**

- FRONT LEFT – Adjust the front left speaker delay up to 25Ms / 850Cm.
- FRONT RIGHT – Adjust the front right speaker delay up to 25Ms / 850Cm.
- REAR LEFT – Adjust the rear left speaker delay up to 25Ms / 850Cm.

- REAR RIGHT – Adjust the rear right speaker delay up to 25Ms / 850Cm.
- SUB-W LEFT – Adjust the left subwoofer delay up to 25Ms / 850Cm.
- SUB-W RIGHT – Adjust the right subwoofer delay up to 25Ms / 850Cm.

#### **GAIN – SELECT THE LISTENING LEVEL OF EACH CHANNEL:**

- FRONT LEFT – Adjust front left speaker level from -8dB to 0dB.
- FRONT RIGHT – Adjust front right speaker level from -8dB to 0dB.
- REAR LEFT – Adjust rear left speaker level from -8dB to 0dB.
- REAR RIGHT – Adjust rear right speaker level from -8dB to 0dB.
- SUB-W LEFT – Adjust the left subwoofer level from -8dB to 0dB.
- SUB-W RIGHT – Adjust the right subwoofer level from -8dB to 0dB.

#### **DTA RESET – RESET ALL DIGITAL TIME ALIGNMENT SETTINGS:**

- NO/YES – Select and confirm by pressing the volume knob.

#### **DELAY UNITS – SELECT MEASUREMENT MODE:**

- MS/CM – select in milliseconds or centimeters (time or distance).

#### **CAR TYPE – SELECT THE TYPE OR SIZE OF THE CAR:**

- SMALL CAR – Select this if the car is small (2-Doors).
- MEDIUM CAR – Select this if the car is medium (4-Doors).
- LARGE CAR – Select this if the car is large (SUV).

#### **SAVE DSP SETTINGS (PRESET)**

You can save 6 independent settings (presets) and switch between them quickly. Settings will be retained in case the battery is disconnected.

1. Adjust the equalizer, delay and crossover settings.
2. Exit the “AUDIO ” menu.
3. Press the volume knob (encoder) for 3 seconds. “DSP KEYS” (“memory”) flashes on the bottom line of the display.
4. Press button “1” for 2 seconds to store the current settings in memory “1”. “Preset 1” appears on the bottom line.
5. Press the volume knob (encoder) for 3 seconds to exit save mode.
6. Change the EQ, delay and crossover settings.
7. Exit the -Audio menu ( “AUDIO”).
8. Press the volume knob (encoder) for 3 seconds. “DSP KEYS” (“memory”) flashes on the bottom line of the display.
9. Press button “2” for 2 seconds to save the current settings in memory slot “2”. “Preset 2” appears on the bottom line.
10. Press button “1” briefly to recall the settings stored in “preset 1”.

11. Press button “2” briefly to recall the settings stored in “preset 2”.

## **DISPLAY-DISPLAY SETTINGS COLOR SELECT**

**Adjust the RGB Backlight Colors, you can adjust each zone independently:**

- ZONE ALL / ZONE 1 / ZONE 2 / ZONE 3 / COLOR RESET

\*Press the volume knob (encoder) once the area is selected and you can adjust the colors:

- CUSTOM RGB / VARIABLE SCAN / RED / PINK / PURPLE / BLUE / CYAN / GREEN / YELLOW / ORANGE / WHITE

\*CUSTOM RGB: Select “Custom RGB” and press the volume knob (encoder), then select:

- RED / GREEN / BLUE and adjust its intensity of each one from 0~250 to create your own color mix.

## **INFO DISPLAY**

You can select what is displayed on the information screen, which is the bottom right portion of the screen:

- SPECTRUM / CLOCK DIMMER

Adjust the intensity of the backlight, use this to avoid blinding your eyes when driving at night:

- ON / OFF

\*ON: All backlighting will dim.

\*OFF: All backlighting will have its normal intensity.

## **TUNER – RADIO TUNER SETTINGS LOCAL SEEK – ADJUSTS THE STATION SEARCH SENSITIVITY:**

- OFF/ON – Select and confirm by pressing the volume knob.

## **STEREO SET – SELECT THE STEREO RECEPTION MODE:**

- OFF/ON – Select and confirm by pressing the volume knob.

## **REGIONAL – SELECT THE REGION OR COUNTRY FOR STATION RECEPTION:**

- EUROPE / AMERICA / ASIA / RUSSIA – Select and confirm by pressing the volume knob.

## **BLUETOOTH – BLUETOOTH SYSTEM SETTINGS PIN CODE EDIT – CHANGE THE PIN CODE TO LINK WITH THE BT:**

- PIN CODE XXXX – select the first digit from 0 to 9 by turning the volume knob and press the forward button to select the next digit, repeat the steps until you finish setting the desired PIN code combination and finish by pressing the volume knob to record the new PIN code.
- MIC GAIN: Select from 1 to 7 the gain of the microphone for hands-free calls.

## **SYSTEM – GENERAL RECEIVER SETTINGS LANGUAGE – YOU CAN SELECT YOUR LANGUAGE FOR ALL RADIO FUNCTIONS AND MENUS:**

- ENGLISH / SPANISH / PORTUGUES – Select and confirm by pressing the volume knob.

**CLOCK – GENERAL CLOCK SETTINGS CLOCK FORMAT – CHANGE THE TIME FORMAT:**

- 12H / 24H – Select and confirm by pressing the volume knob.

**CLOCK ADJUST – SET THE TIME:**

- HH:MM – Turn the volume knob to set “HOUR” then press the volume knob and set “MINUTES” by turning the volume knob, then finish by pressing the volume knob again.

**DATE FORMAT – SELECT THE ORDER TO DISPLAY THE DATE:**

- DD/MM/YY / MM/DD/YY – Select and confirm by pressing the volume knob.

**DATE ADJUST – SET THE DATE:**

- DD/MM/YYYY – Turn the volume knob to set “DAY” then press the volume knob and set “MONTH” by turning the volume knob, then press the volume knob again and set “YEAR” by turning the volume knob, then finish by pressing the volume knob again.

**BEEP – CONFIRMATION SOUND WHEN PRESSING ANY BUTTON ON THE UNIT:**

- OFF/ON – Select and confirm by pressing the volume knob.

**AUX IN – TURNS AUX SOURCE ON/OFF:**

- OFF/ON – Select and confirm by pressing the volume knob.

**HEAT PROTECTION – SELECT TEMPERATURE DEGREE POINT FOR PROTECTION:**

- \*90°C/100°C/110°C – Select and confirm by pressing the volume knob.

**SWC – STEERING WHEEL CONTROL ENABLE – ENABLE OR DISABLE THE SWC SYSTEM:**

- NO/YES – Select and confirm by pressing the volume knob.

**PROGRAM – STARTS THE SWC PROGRAMMING PROCESS:**

- (Refer to the “steering wheel button programming” instructions for more information).

**POWER SAVE – THE BT MODULE AND USB CHARGER ARE DISCONNECTED WHEN THE UNIT IS TURNED OFF:**

- OFF/ON – Select and confirm by pressing the volume knob.

**ANIMATION – ANIMATION ON THE DEVICE DISPLAY AS A SCREENSAVER:**

- OFF / PER 15 SEC / PER 30 SEC / PER 1 MIN / PER 2 MIN / PER 4 MIN – Select and confirm by pressing the volume knob.

#### **DEMO MODE – ACTIVATES RETAIL STORE MODE TO SHOW ALL RADIO FUNCTIONS ON THE SCREEN:**

- OFF/ON – Select and confirm by pressing the volume knob.

#### **FACTORY RESET – RESTORES ALL SETTINGS AS FROM FACTORY:**

- NO/YES – Select and confirm by pressing the volume knob.

#### **VERSION – SHOWS THE CURRENT SOFTWARE VERSION:**

- VER X.X – Press the “back” button to exit to the previous menu.

### **FUNCTION OPERATION**

#### **RADIO**

##### **SAVING AND RECALLING RADIO STATIONS**

Press and hold one of the number buttons (1-6) to store the current radio station in memory. Press one of the number buttons (1-6) to recall the current radio station. It is possible to store 6 radio stations in each broadcast band.

##### **SELECTING A BAND**

Press the (19) band button to select a radio station broadcasting range: FM1, FM2, FM3, AM1, AM2.

##### **AUTOMATICALLY SEARCH FOR RADIO STATIONS**

Press the button (7) or (5) to quickly search for stations.

##### **AUTOMATICALLY SEARCHING AND STORING STATIONS**

Press and hold the SEARCH button (9) for more than 2 seconds to quickly find and automatically store.

##### **SEARCHING FOR RADIO STATIONS MANUALLY**



Press the button (7) or (5) to change the frequency step by step. Hold down the button (7) or (5) to switch to automatic tuning mode.



### **USB**

Connect the USB storage device to the connector on the front of the unit.

Playback of supported file formats starts automatically. The USB socket supports charging of mobile devices. The charging current is up to 1A.

**IMPORTANT:** There is a wide range of freeware and other software on the market for encoding FLAC, Mp3 and WAV files, and depending on the encoding status and file format, there may be no quality production or noise during playback. In some cases playback is not possible.

Press the button (7)  or (5)  to go to the previous or next track.

Press and hold the button (7)  or (5)  to rewind or fast forward.

Press button (16) to stop playback.

Press again to resume playback.

Press the INT button (17) INT to play each track in succession for 10 seconds. Press again to stop scanning.

Press button (14) to select repeat playback mode: Repeat folder – Repeat playback of all files in the current folder.

Repeat one – Repeat playback of the

current file. Repeat all – Repeat playback of all files on the media.

Press the button (15) to select random playback mode: Random folder / Random All / Random Off.

Press button (13)  or (12)  to switch to the previous or next source folder. Press and hold button (13)


 or (12)  to move backwards or forwards 10 tracks.


## BLUETOOTH


Pair your phone with the “DS18 SDX-P200” receiver:


1. Switch on Bluetooth on your mobile device.
2. Find “SDX-P200” in the list of available BT devices and connect to it. The PIN code for authorization: 0000 .
3. If the connection is successful, the “BT” indicator on the receiver’s display will stop flashing and light up permanently.
4. The audio signal from the mobile device (music and calls) will be transmitted to the car speakers.

This is the most important thing you can do Dial the number of the caller on your telephone. The call will be made over the speakerphone.

When you receive an incoming call, the caller’s number is displayed on the receiver’s screen. Press the button (19)  to accept the handsfree call.

To reset an incoming call or end a call, press and hold the (19)  button.

Press and hold the (19) button on the receiver to call the last number on your phone’s outgoing call list. Press button (19)  on the receiver to activate the Virtual Assistance function.

Toggle between private and handsfree During a call, press the (19)  button to transfer the audio signal from the handsfree to your phone or from your phone to the handsfree.

Turn the volume knob during a call to adjust the volume. Press the button (11) MUTE to mute the sound.

## BLUETOOTH MUSIC (A2DP)

The SDX-P200 supports the Bluetooth audio transmission protocol. Once your mobile device is successfully paired with the receiver, you will be able to play music from your phone on your car audio system. To switch tracks, press the buttons (7) or (5) To stop playback, press the (16) button

## AUX

You can connect an external source via the 3.5mm jack on the front of the receiver using the AUX cable (available separately).

## SETTING (RESET)

Press and hold the “reset” button (Behind the Faceplate) for 10 seconds to reset the unit to the factory settings.



## STEERING WHEEL BUTTON PROGRAMMING

This function can only be implemented on vehicles with resistive control buttons, the common wire of the buttons is connected to the vehicle ground.

For the steering wheel buttons to work correctly, you must first connect the wires of the steering wheel remote control to a steering wheel control adapter module (sold separately) specific to your vehicle, this must be

programmed for use with radios that use the standard SWC 3.5mm input jack.

The operating voltage range when the remote control buttons are connected is 0.3 V to 3.3 V. The minimum operating voltage difference that is set at the remote control output after the buttons are pressed must be at least 0.3 V.

Otherwise, in some cases, the buttons may be perceived as one.

#### **WARNING!**

The manufacturer does not guarantee correct operation of the unit with all vehicle models and accepts no responsibility for any problems that may occur with the vehicle or the unit if the unit is incorrectly connected to the vehicle's original wiring harness. For the correct connection of the original REMOTE remote control, please consult your car's authorised dealer or contact a certified installation centre.

#### **BUTTON PROGRAMMING PROCEDURE:**

1. Select the SYSTEM menu.
2. Enter the SWC section and select one of the two memory banks (SWC 1 or SWC 2).
3. Enter the ENABLE menu item and select YES .
4. Press the back button and select PROGRAM. The message PRESS KEY 1 flashes on the display.

#### **FOLLOW THE STEPS BELOW:**

1. Press the button located on the steering wheel to assign a function to it. The message CHOOSE KEY 1 flashes on the display.
2. Select one of the buttons on the head unit whose function you want to assign. When the assignment is successful the message PRESS KEY 2 flashes on the display.
3. Repeat these operations (1-2) as many times as you wish to assign functions to the steering wheel buttons.
4. Press the knob on the front panel to save the data. SAVED x KEYS appears on the display, then the unit returns to the SWC menu.

#### **NOTE:**

A total of 9 functions are available for programming. To disable the settings of the programmed buttons, enter the SWC menu and, by selecting the ENABLE option, set it to NO.



#### **FUNCTION OPERATION DS18 SDX APP**

##### **SMARTPHONE APP (REMOTE CONTROL)**

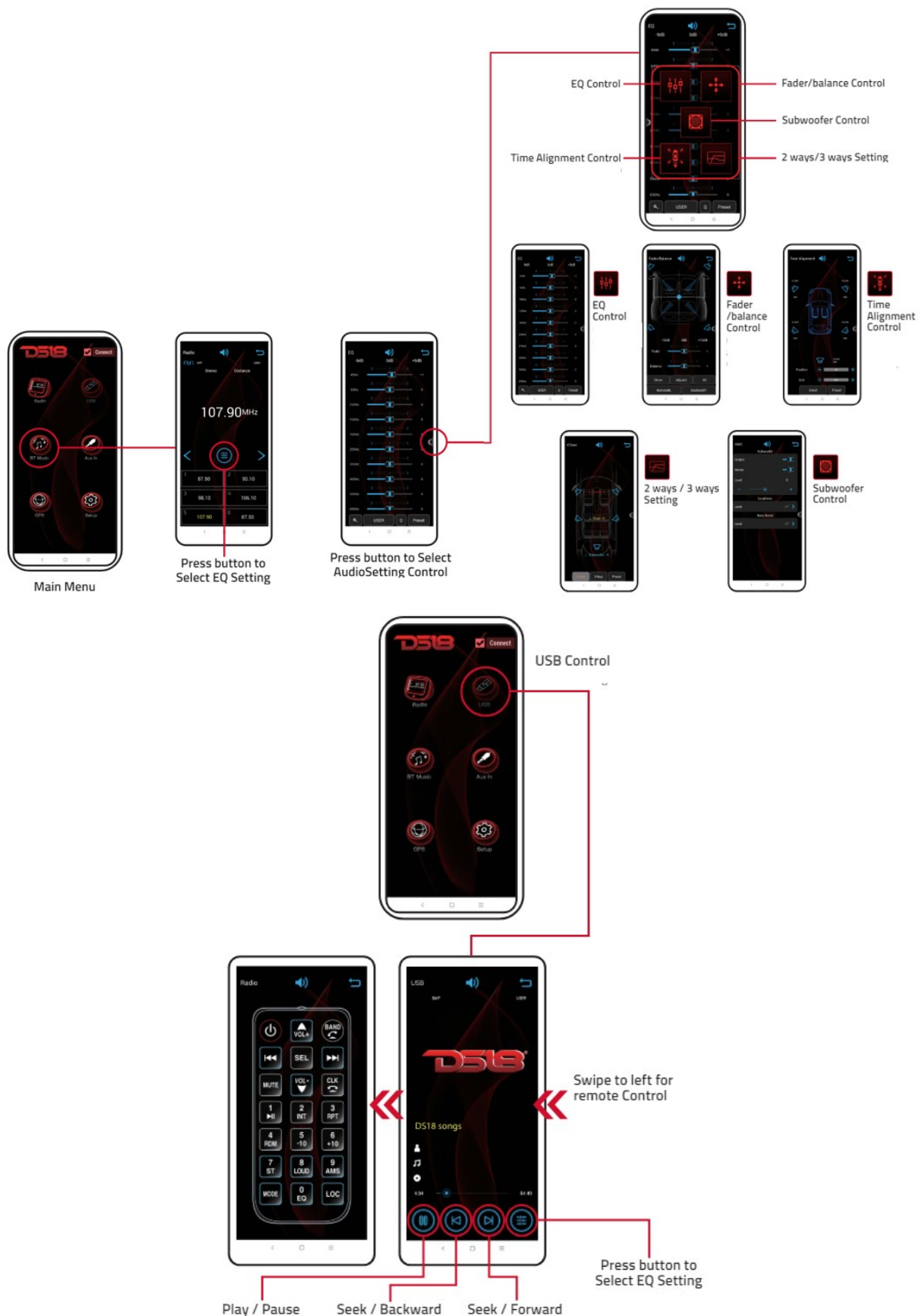
Most device settings are available in the DS18 SDX REMOTE CONTROL mobile app for Android or iOS. You can control the SDX-P200 receiver from your smartphone:

1. Install the Audio app from Google Play or App Store.
2. Connect your smartphone to the receiver via Bluetooth.
3. Launch the Audio app to operate the receiver.

##### **RADIO MODE APP CONTROL**

To control the Radio, press the Radio button in the SDX App. From the Radio settings, you can press the EQ button underneath the chosen station to select your EQ settings. Press the expand button on the right side of the screen to gain access to extended controls. Press the designated button to select audio setting controls (EQ Control, Fader/Balance Control, Subwoofer Control, Time Alignment Control, 2-Ways/3-Ways Setting).





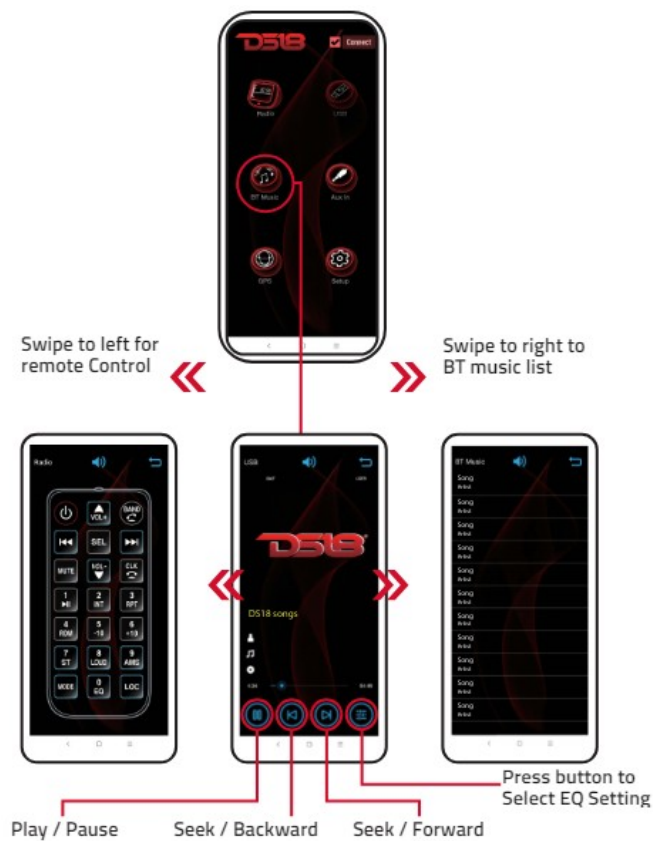
## USB APP CONTROL

To configure your settings, press the setup button in the SDX App. Choose between LED Zones 1, 2, 3, or select 'LED All Zones' for illumination setup.



### BT MUSIC MODE APP CONTROL

To control the audio from Bluetooth device, press the BT MUSIC button in the SDX App. Swipe to the left to access the remote control.



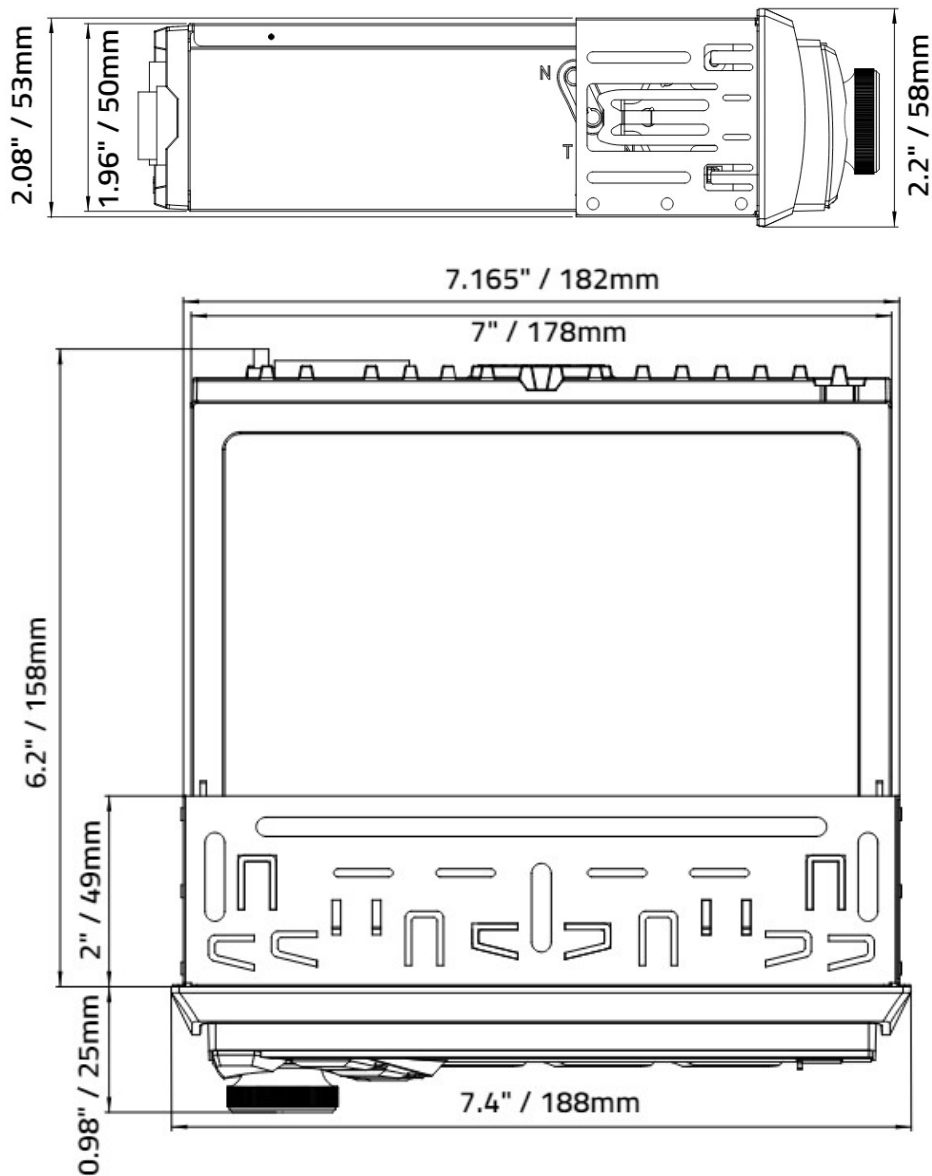
## TECHNICAL SPECIFICATIONS

|                                  |                   |
|----------------------------------|-------------------|
| GENERAL                          |                   |
| Nominal DIN Size :               | 1-DIN             |
| Rated Power Voltage:             | 14.4V             |
| Voltage Operation:               | 9.6-15 Volts      |
| Maximum Current Consumption:     | 30A               |
| Temperature Operation:           | 0~60°C / 32~140°F |
| DISPLAY                          |                   |
| Screen Size:                     | 4" / 104mm        |
| Display Type:                    | LCD Dots          |
| Buttons / Controls:              | ABS               |
| Backlight Illumination Type:     | RGB / 3 Zones     |
| Body Material / Color / Finish : | Steel / Bronze    |
| AUDIO                            |                   |
| Maximum Power Output (Peak) :    | 4x180W            |
| Continuous Power Output (RMS) :  | 4x60W             |
| Minimum Impedance :              | 4 Ohms            |
| Frequency Response :             | 20Hz-20KHz        |

|                           |   |
|---------------------------|---|
| Pre-Output Level (RCA) :  | 3V / 3.5V (Subwoofer)                                 |
| Equalizer Bands :         | 24 Bands  |
| Equalizer Gain :          | + / – 9dB   |
| Crossover :               | 3-Way   |
| Crossover Slope :         | 6 / 12 / 24 dB/Oct                                    |
| Time Alignment :          | 0~25ms / 0~850cm                                      |
| Audio Control :           | Subwoofer Level, Fader, Balance, Loudness             |
| TUNER                     |   |
| Frequency Range (FM)      | 87.5 – 108.0 MHz                                      |
| Frequency Range (AM)      | 522 – 1620 KHz  |
| Presets Memory            | 18 FM / 12 AM   |
| Region                    | Europe, America, Asia, Russia                         |
| Sensitivity Adjustment    | Local / DX  |
| BLUETOOTH                 |   |
| Version                   | 4.2   |
| Services                  | Hands Free Calls, Audio Streaming, Remote Control APP |
| Audio Protocols           | A2DP, AVRCP, HFP                                      |
| Range                     | 32ft / 10m  |
| USB / SD                  |   |
| Type / Class              | 2.0, 3.0 / FAT 16, FAT32                              |
| Format Files Supported:   | FLAC (16 Bit), WAV, AAC, APE, MP3                     |
| Max Memory Size Reader    | 64 GB   |
| Max Current USB Charger   | 1A  |
| Number of Ports           | 1 (Front)   |
| CONNECTIVIT               |   |
| Aux Input:                | Yes, Front 3.5mm Jack (2V Max)                        |
| Microphone:               | Yes, Built-In / External Mic Input                    |
| Remote Control (SWC):     | Yes, 3.5mm Jack Input                                 |
| Remote Control (Handset): | Yes, Card Type with Rubber Buttons                    |
| Remote Control APP:       | Yes (Android and iOS Devices)                         |
| MEASUREMENTS              |   |
| Overall Width (Chassis)   | 7" / 178mm  |
| Overall Height (Chassis)  | 1.96" / 50mm  |

|                              |              |
|------------------------------|--------------|
| Overall Depth (Chassis)      | 6.2" / 158mm |
| Overall Width (Bezel Frame)  | 7.4" / 188mm |
| Overall Height (Bezel Frame) | 2.2" / 58mm  |
| Overall Depth (Bezel Frame)  | 0.98" / 25mm |

## OVERALL DIMENSIONS



## WARRANTY

Please visit our website [DS18.com](http://DS18.com) for more information on our warranty policy.

We reserve the right to change products and specifications at any time without notice. Images may or may not include optional equipment.

### WARNING:

Cancer and Reproductive Harm.

[www.P65Warning.ca.gov](http://www.P65Warning.ca.gov)



FOR MORE INFORMATION PLEASE VISIT  
[DS18.COM](https://www.ds18.com)

#WELIKEITLOUD      

## Documents / Resources



[DS18 SDX-P200 Digital Media Player](#) [pdf] Owner's Manual  
SDX-P200 Digital Media Player, SDX-P200, Digital Media Player, Media Player, Player

## References

-  [Official DS18 Pro Audio Store - Speakers, Subwoofers, Amps & More!](#)
- [User Manual](#)

### Manuals+ Privacy Policy

This website is an independent publication and is neither affiliated with nor endorsed by any of the trademark owners. The "Bluetooth®" word mark and logos are registered trademarks owned by Bluetooth SIG, Inc. The "Wi-Fi®" word mark and logos are registered trademarks owned by the Wi-Fi Alliance. Any use of these marks on this website does not imply any affiliation with or endorsement.