



# DS18 DSP2.6DBT Digital Sound Processor Owner's Manual

[Home](#) » [DS18](#) » DS18 DSP2.6DBT Digital Sound Processor Owner's Manual 

## Contents

- [1 DS18 DSP2.6DBT Digital Sound Processor](#)
- [2 FEATURES](#)
- [3 ELEMENT'S DESCRIPTION](#)
- [4 INSTALLATION](#)
- [5 FUNCTIONAL DIAGRAM](#)
- [6 MENU & CONFIGURATIONS](#)
- [7 BT INTERFACE](#)
- [8 FUNCTIONS](#)
- [9 PAIRING](#)
- [10 SPECIFICATIONS](#)
- [11 WARRANTY](#)
- [12 Documents / Resources](#)
  - [12.1 References](#)
- [13 Related Posts](#)

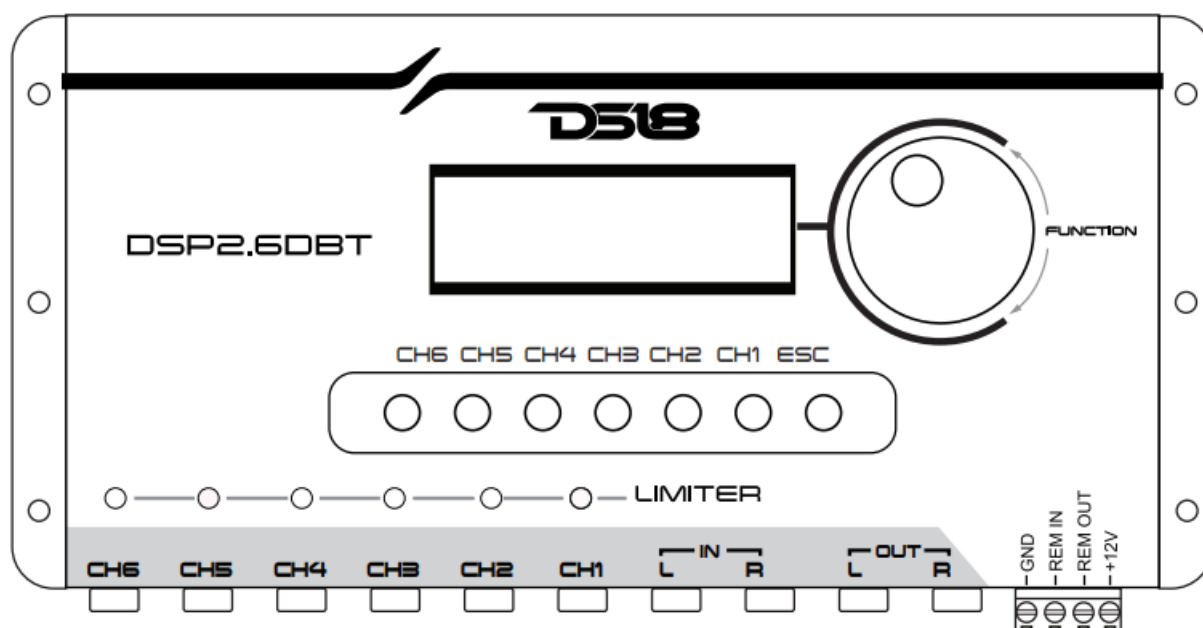


**DS18 DSP2.6DBT Digital Sound Processor**



Congratulations, you have just purchased a product with DS18 quality. Through Engineers with years of experience, critical testing procedures, and a high-tech laboratory we have created a range of high-quality products that reproduce the musical signal with the clarity and fidelity you deserve. To ensure optimal product operation, read this manual carefully before using the product. Keep the manual in a safe and accessible place for future reference.

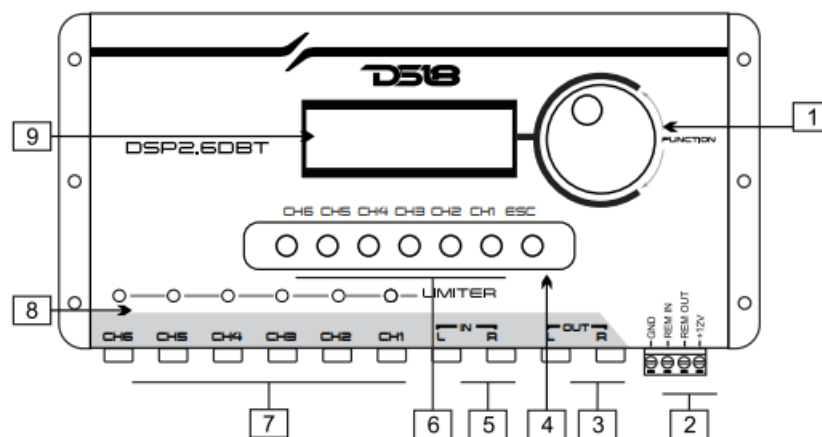
## FEATURES



- 2 Channel RCA Audio Input and Linked Output.
- 6 Channels RCA Audio Output.
- Routing Channels.
- Input equalizer with 28 bands between 1/4 octave.
- Parametric equalizer with 3 independent band per channel.
- Crossover with filters: Butterworth, Linkwitz-Riley and Bessel, with attenuations from 6dB/OCT until 48dB/OCT.
- Adjustable Time Delay
- Automatic or manual Limiter function with Threshold, Attack and Decay.

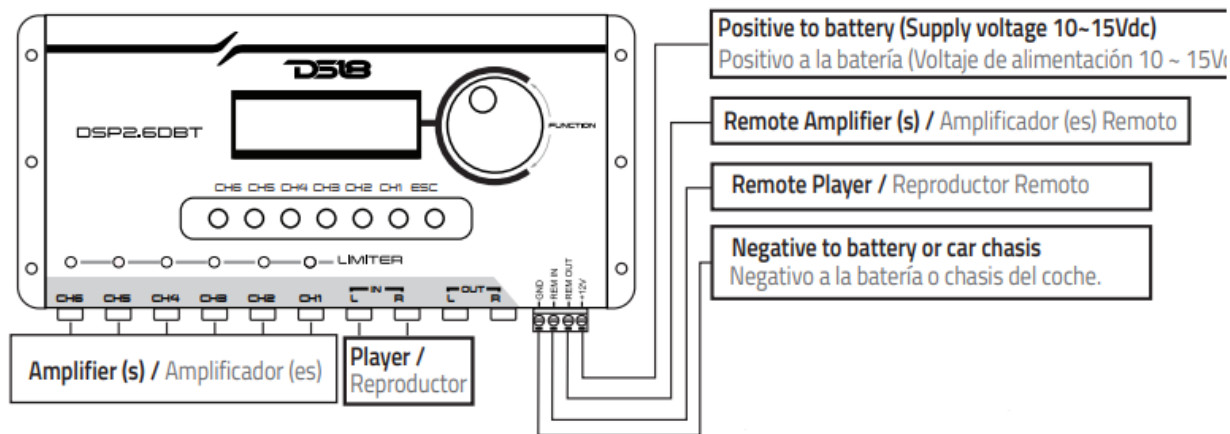
- Phase selector
- Adjustable Input Gain
- Mute function on each output channel
- Pink-Noise generator.
- User's password.
- Preset with configurations.
- Adjustable output gain on each channel
- Remote output with 300mA max.
- Operating voltage 9V~16Vdc.
- BT Interface with Smartphone APP available for Android and iOS

## ELEMENT'S DESCRIPTION



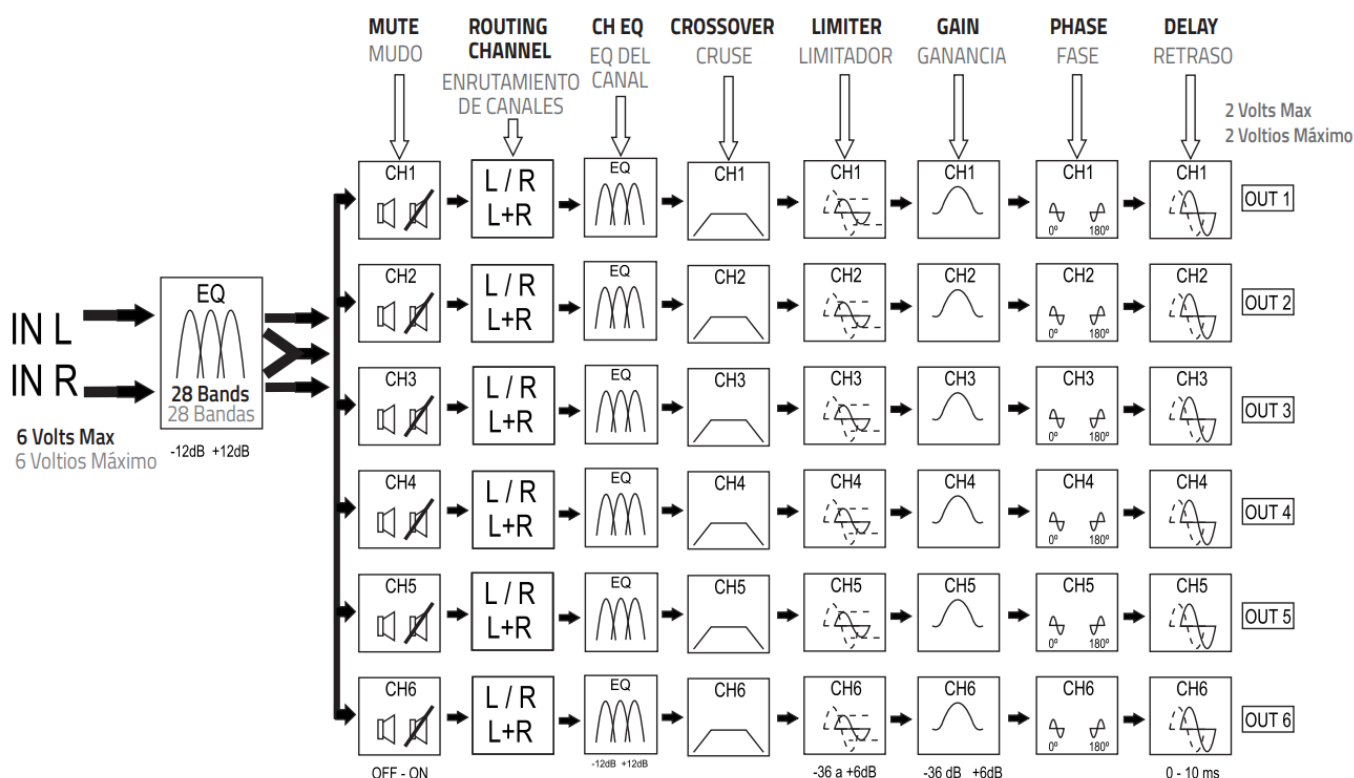
1. The rotary Encoder is responsible by select and change the parameters.
2. The power supply Input must be connected with 12Vdc and consumes around 0,35A, the REM IN signal comes from the player, and REM OUT sends the signal to others devices (like amplifiers, mixers).
3. Use the output LINK to share the audio signal for linking others devices.
4. Use the ESC button to return to previous parameters or menus.
5. The input signal must be connected to the player or another signal source.
6. Use the buttons to select the channel to be configured, can be used in any menu.
7. 6 Independent outputs.
8. The LEDs indicate when the limiter works.
9. The display shows the menus and parameters.

## INSTALLATION



- Wire gauge 1 mm<sup>2</sup>/18awg or bigger.
- REM IN must be connected to player's remote.
- REM OUT must be connected on amplifiers.
- Voltage Power: 10~15Vdc.
- Consumption current: 0,35A.

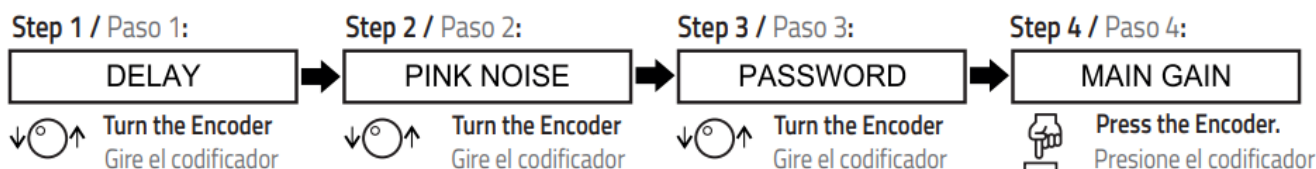
## FUNCTIONAL DIAGRAM



## MENU & CONFIGURATIONS

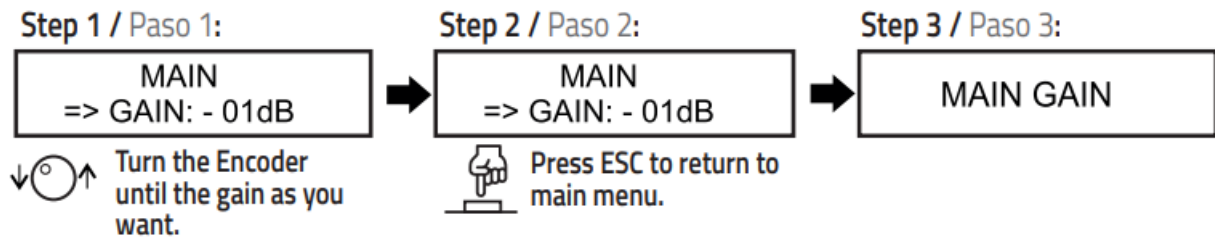
### 1. ACCESSING THE MENU

Turn the Encoder to choose the menus, if you want open the menu, just press the Encoder.



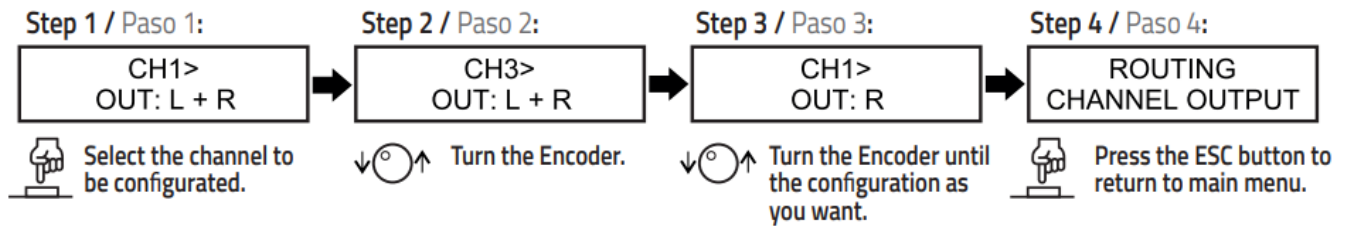
## 2. MAIN GAIN

Adjust the main gain in the processor.



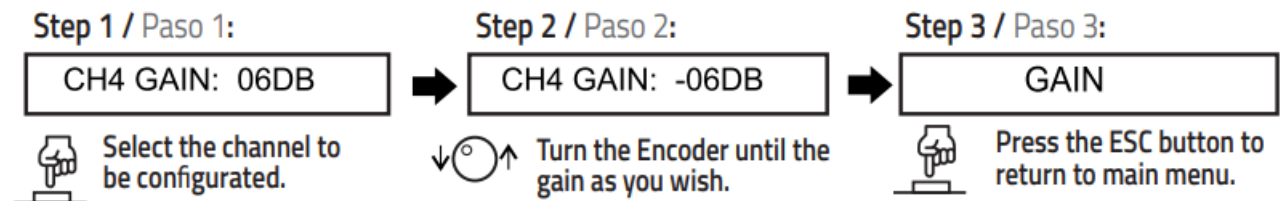
## 3. ROUTING CHANNEL OUTPUT

Make the routing channels between input and output. If you select L, that channel will receive just the L side, when you select R, that channel will receive just the R side. If you select L+R, the channel will receive both signals (mono).



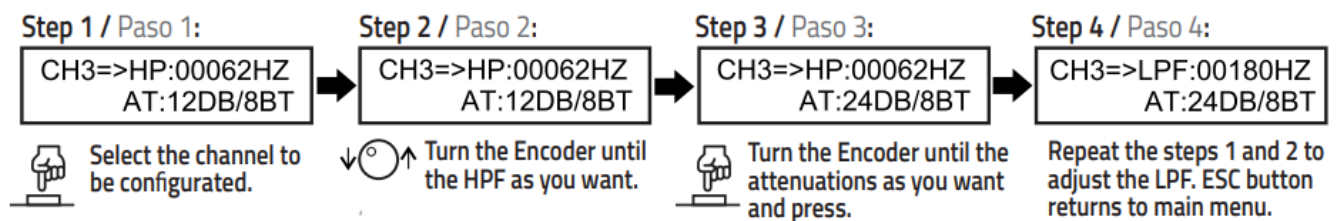
## 4. GAIN

Allow changing the independent gain per each channel.



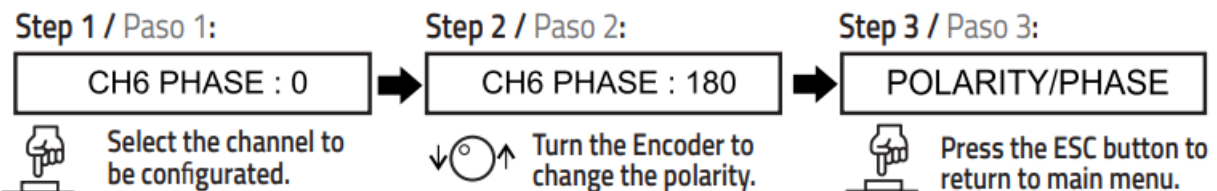
## 5. CROSSOVER

Allow eliminate the frequencies that you don't need, it has filters Butterworth, Linkwitz-Riley and Bessel, with 6~48db/OCT.



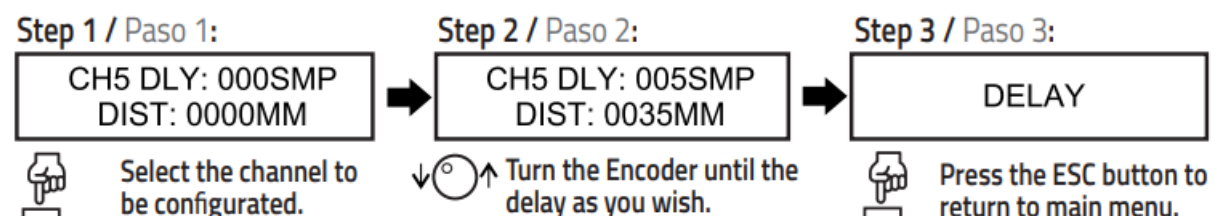
## 6. POLARITY / PHASE

Allow changing the polarity in the output.



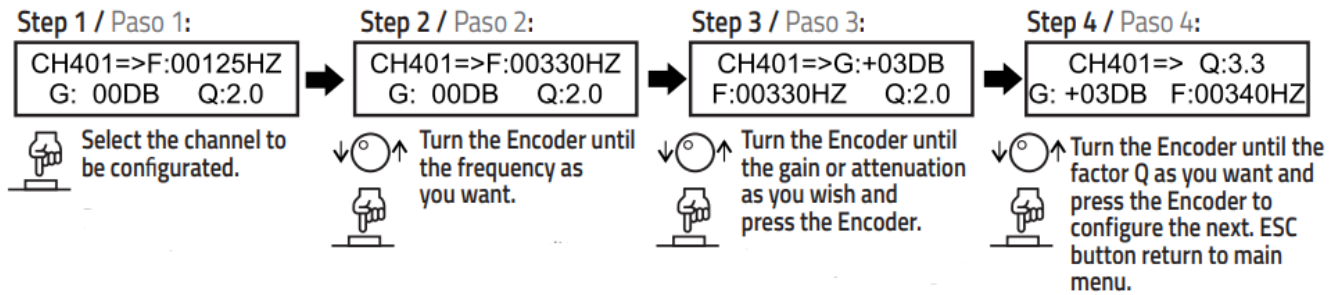
## 7. DELAY

Allow increased time delay to align better the speakers.



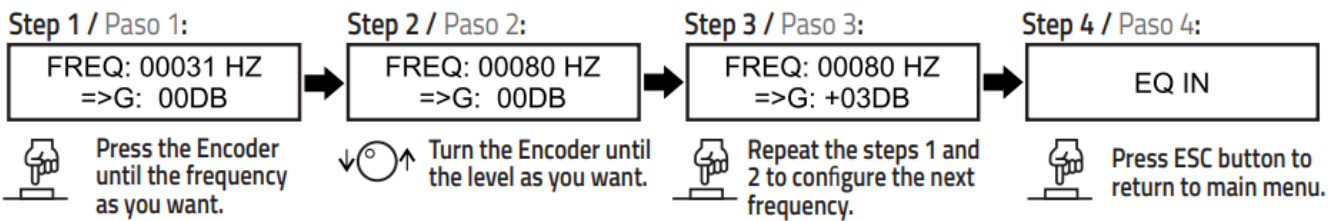
## 8. CHANNEL EQ

Channel equalizer allows increase/decrease 3 independent frequencies per channel between 20~20kHz with frequency, gain and Q factor adjustments.



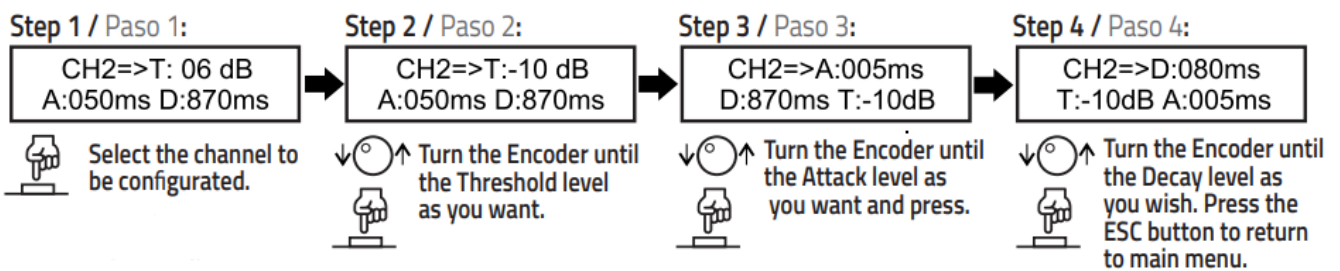
## 9. INPUT EQ

Input equalizer allows leveling up/down the signal by setting a frequency between 20hz and 20khz with 28 bands spaced by 1/4 octave.



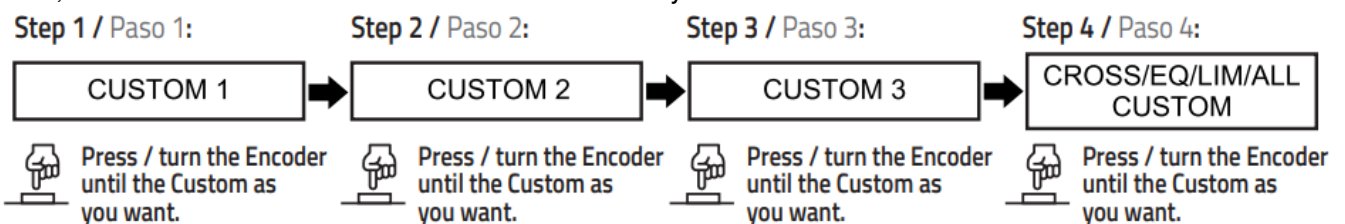
## 10. LIMITER

Choose a limit for the audio signal that doesn't pass the level max set.



## 11. CUSTOM PRESET

The Processor Presets save ALL configurations of the device, just choose the Preset and configure as you wish, so the values will be saved on device automatically.

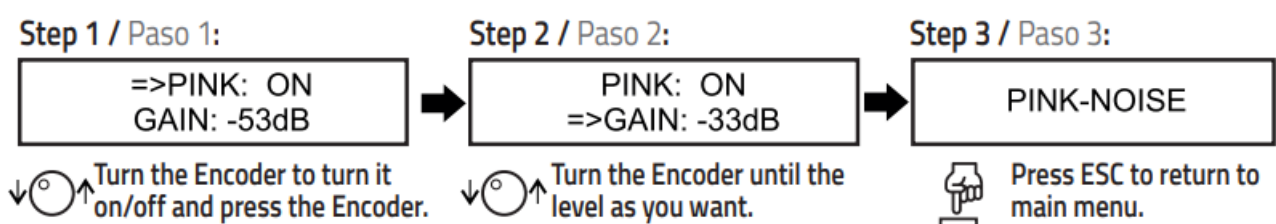


### Attention!

The Presets save all the configurations on the processor, if you choose another preset, this one has the factory configurations, it will be needed configuration again as you want.

## 12. PINK NOISE

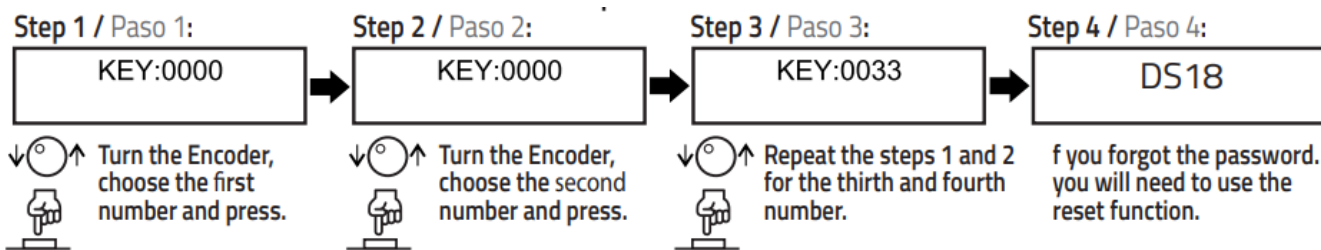
Pink noise Generator to make easier the system alignment:



## 13. PASSWORD

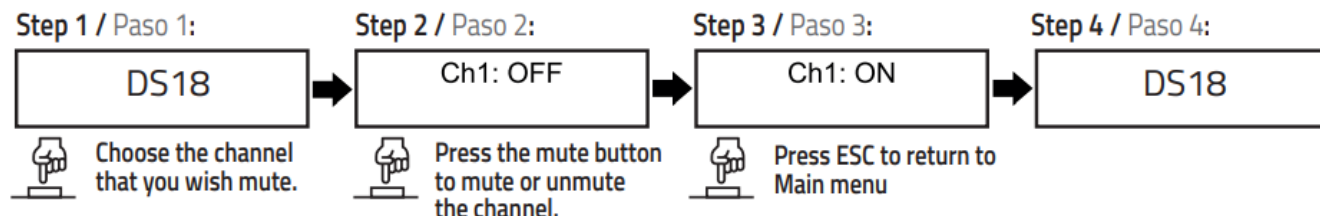
Define a password to protect the configurations:





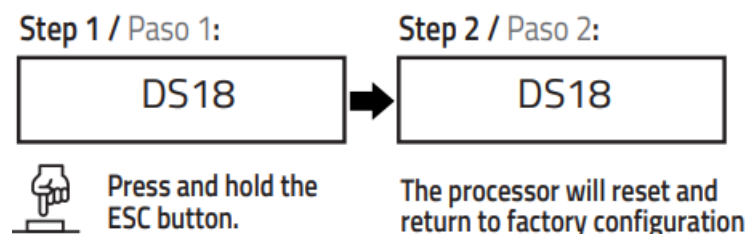
#### 14. MUTE

To mute an output, select the channel and press the MUTE button to change the mute status.



#### 15. RESET

To make a reset of the processor to factory configurations, return to the initial display, and press and hold the ESC button, on a few seconds, the processor will be restarted.



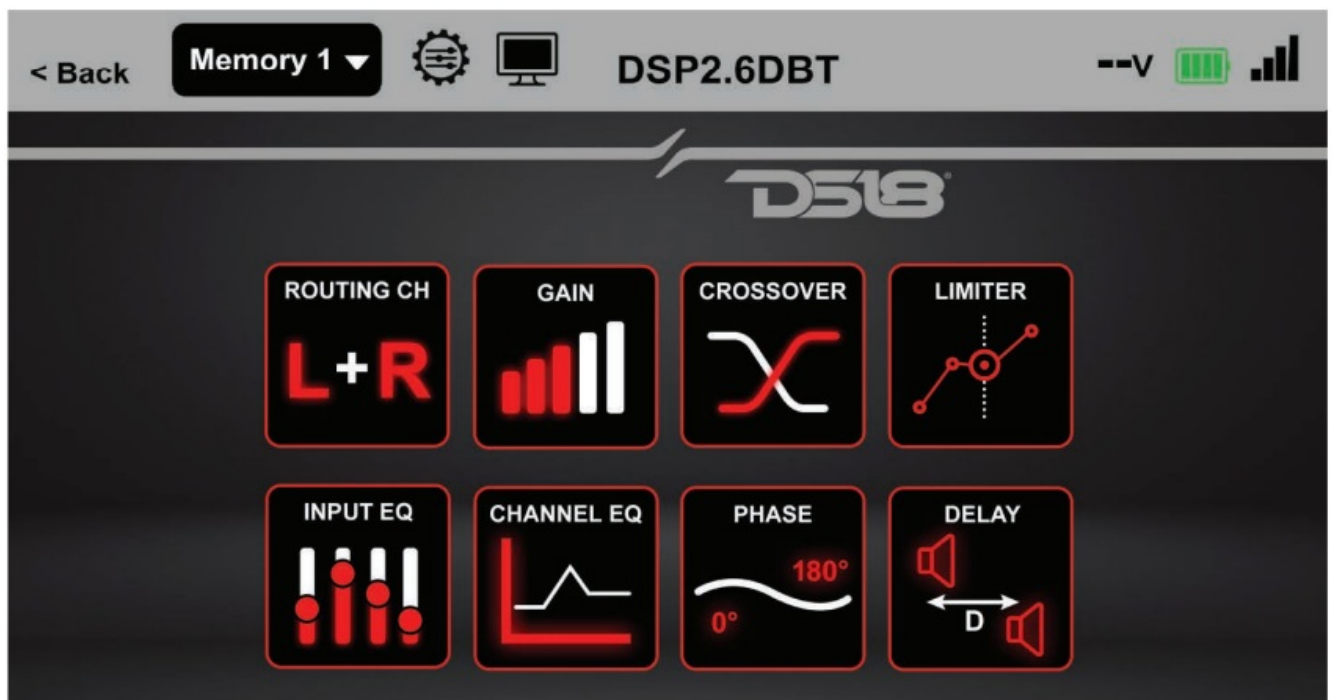
#### ATTENTION

It will be necessary to redo all the configurations because the reset returns the standard values. Before you do it, disconnect all the outputs.

#### BT INTERFACE

Through a didactic and intuitive interface, it is possible to do all the processor's configurations from DS18 by smartphone or tablet, making easier the system alignment, it can be done from your audio system in real-time.

- The app can be downloaded directly on Google Play Store or Apple Store for free.
- The app is available only for this DS18 DSP line, but there is a demo mode for people who don't have some experience with this yet and can learn how it works.



## FUNCTIONS

- ROUTING CH
- GAIN
- CROSSOVER
- LIMITER
- DELAY
- INPUT EQ
- CHANNEL EQ
- PHASE
- PRESET
- PASSWORD

## PAIRING

- Download the app on Google Play Store or Apple Store.
- Turn on the device's location.
- Turn on the Bluetooth.
- Open the app.
- Automatically the app will find the processor.
- Select the processor.
- Type the password.
- Factory's password: 0000.
- To change the factory password, type your new password again and press the Encoder.
- To change the password again, you must reset the processor.

Compatible with all IOS versions and Android 4.3 or later.

## SPECIFICATIONS



## INPUTS:

- Type ..... Unbalanced
- Connection .....RCA
- Max level ..... Up to 6 Volts RMS
- Impedance .....47k $\Omega$

## OUTPUTS :

- Type ..... Unbalanced
- Connection .....RCA
- Max Level .....2 Volts RMS
- Impedance ..... 470k $\Omega$

## TECHNICAL INFORMATION:

- Resolution ..... 24 Bits
- Sample Frequency .....48Khz
- Latency Frequency ..... 1.08ms
- Range Frequency .....15Hz a 22KHz (-1db)
- THD+N max .....  
0,01%
- Signal Noise Ratio .....100dB

## POWER SUPPLY:

- Voltage .....10~15Vdc
- Consumption .....300mA (5w)
- Fuse ..... 2 A
- Dimensions (H x L x D) ..... 4.72" x 9.84" x 1.18" /120 x 250 x 30mm
- Weight ..... 382g / 13.4 Oz

## WARRANTY

Please visit our website [DS18.com](https://DS18.com) for more information on our warranty policy.

We reserve the right to change products and specifications at any time without notice. Images may or may not include optional equipment.

## Documents / Resources



[DS18 DSP2.6DBT Digital Sound Processor](#) [pdf] Owner's Manual  
DSP2.6DBT, Digital Sound Processor, DSP2.6DBT Digital Sound Processor

## References

- [Official DS18 Pro Audio Store - Speakers, Subwoofers, Amps & More!](#)