

DS18 DBPM100 Digital Bass Processor



# DS18 DBPM100 Digital Bass Processor Owner’s Manual

[Home](#) » [DS18](#) » DS18 DBPM100 Digital Bass Processor Owner’s Manual 

### Contents

- 1 DS18 DBPM100 Digital Bass Processor
- 2 DIGITAL BASS PROCESSOR
- 3 FEATURES
- 4 FUNCTIONS OPERATIONS
- 5 FUNCTIONS OPERATIONS / BASS REMOTE CONTROL
- 6 SIGNAL CONNECTION
- 7 SPECIFICATIONS
- 8 MEDIDAS
- 9 Documents / Resources
  - 9.1 References



## DS18 DBPM100 Digital Bass Processor



## DIGITAL BASS PROCESSOR

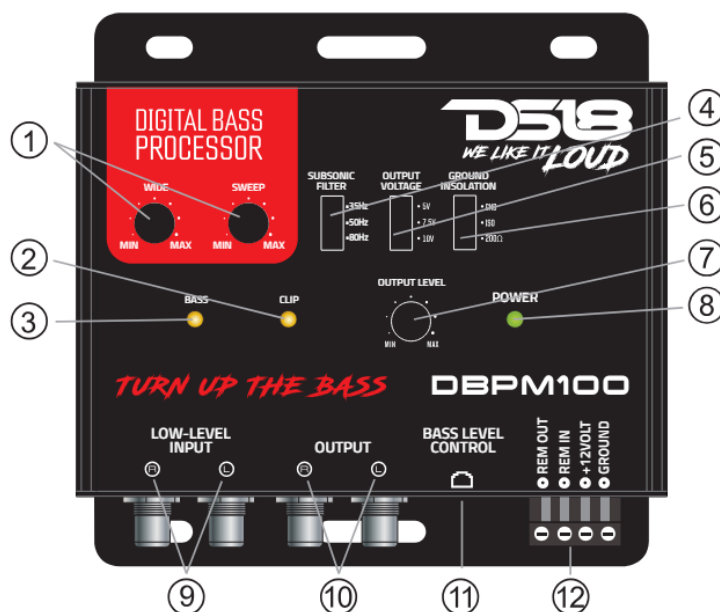
Congratulations, you have just purchased a product with DS18 quality. Through Engineers with years of experience, critical testing procedures, and a high-tech laboratory we have created a range of high-quality products that reproduce the musical signal with the clarity and fidelity you deserve. To ensure optimal product operation, read this manual carefully before using the product. Keep the manual in a safe and accessible place for future reference.

## FEATURES

- Balanced line-level input
- A fully adjustable bass processor that creates low frequencies from the source
- Dash mount remote control
- Subsonic filter
- PCB with anti-corrosion coating
- Compact design

BEFORE OPERATING THE UNIT, PLEASE READ THIS MANUAL THOROUGHLY AND RETAIN IT FOR FUTURE REFERENCE

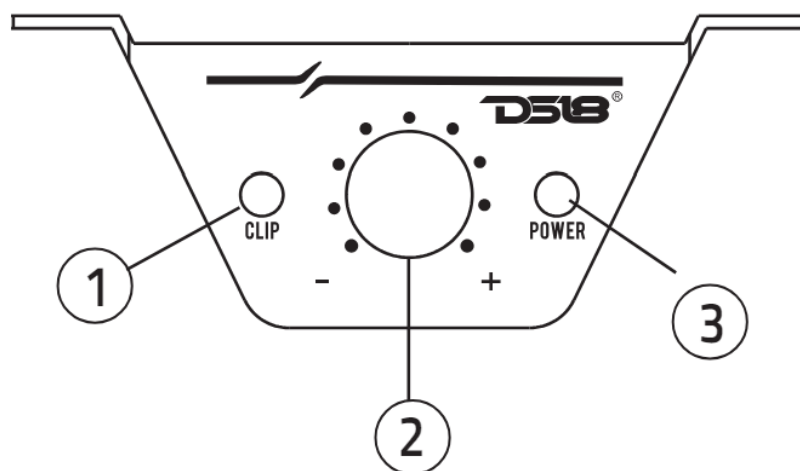
## FUNCTIONS OPERATIONS



1. **Bass Restoration Settings:** These knobs govern the bass restorer functions of the DBPM100. The SWEEP knob enables you to select the centre frequency that the DBPM100 will maximize. The WIDE knob adjusts the width of the frequency range that the DBPM100 will impact.
2. **CLIP LED:** Activates when the total harmonic distortion (THD) reaches 1% of the machine output.
3. **Bass Enhancer LED:** Low frequency BASS indicator light at processor output.
4. **Subsonic (ON / OFF):** This controls the high-pass crossover for the subwoofer output. Adjust to 35Hz, 50Hz or 80Hz.
5. **Output Voltage (10V / 7.5V / 5V):** Systems vary in design, with some geared for powerful SPL performance and others for a more refined audio experience. The Bass Maximizer allows you to adjust the signal voltage of the Bass Restoration Circuit, either increasing or decreasing it. Depending on your system, you can change this switch to a higher or lower setting to optimize your bass output and safeguard your speakers.

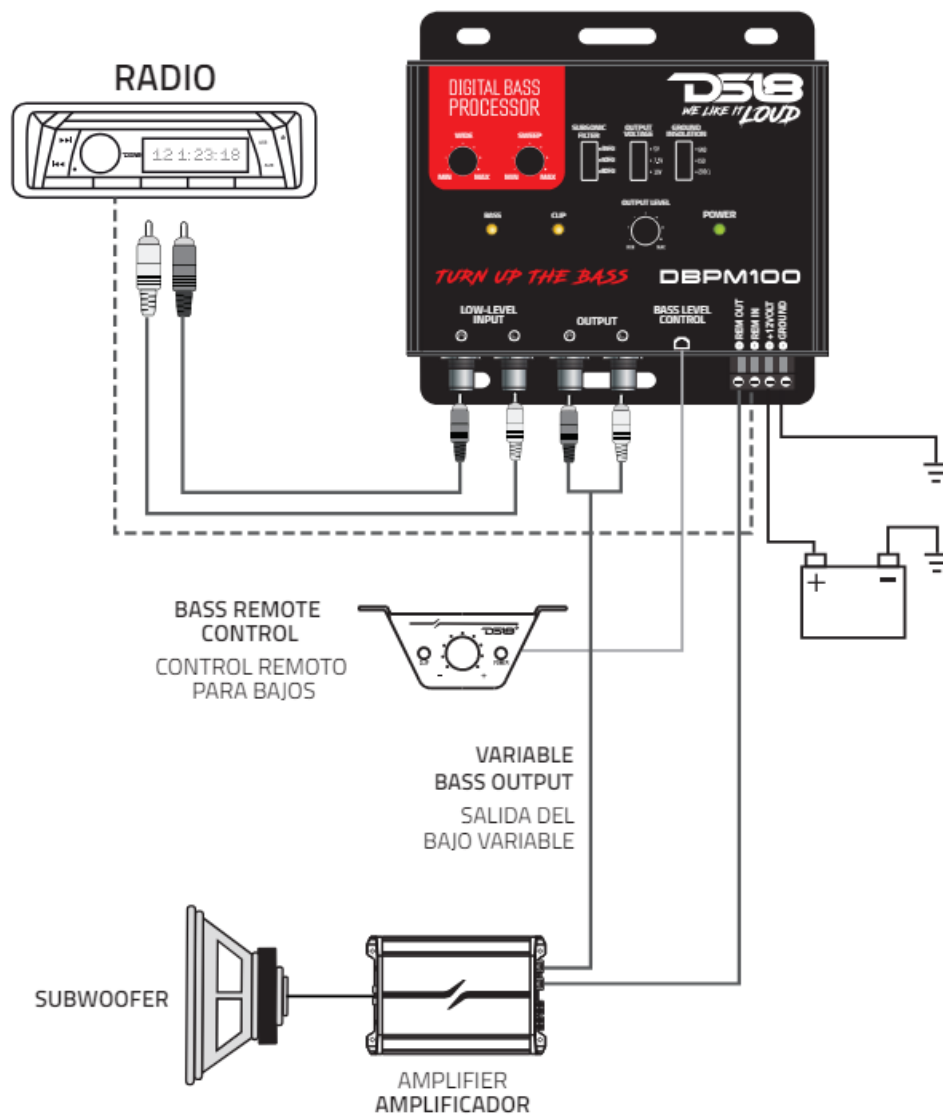
6. **Ground Isolation (GND / ISO / 200Ω):** Occasionally alternator whine may appear in a system due to improper grounding. To help resolve this situation the DBPM100 provides alternative grounding connections. Make sure your system is OFF before moving these switches.
7. **Output Power Level Adjustment:** Allows for precise adjustment of the output power level to meet the specific requirements of your setup
8. **Power LED:** Notifies that power to the unit is on.
9. **RCA Inputs:** The inputs of the DBPM100 use a balanced input circuit to minimize induced noise. They are also designed to handle very high signal voltages up to 10V.
10. **RCA Output:** Connect these RCA connectors to the subsequent component after the DBPM100, such as a crossover, equalizer, or amplifier. It's important to note that the DBPM100 should be placed in-line before a crossover.
11. **Bass Remote Level Control:** Connect the supplied remote control here to manage the amount of bass restoration and the selected output level at the same time.
12. **Power Terminal Block / +12V /Ground / REM In / REM Out:** Be sure to secure your connections to prevent shorts and damage to your DS18 unit.

## FUNCTIONS OPERATIONS / BASS REMOTE CONTROL



1. CLIP LED Indicator for Output Clipping: Keep an eye on the CLIP LED indicator located on the remote Level knob. To prevent distortion and ensure your audio remains clear and undistorted, promptly turn down the Gain control.
2. Bass Restoration level knob
3. Power LED: Notifies that power to the unit is on.

## SIGNAL CONNECTION



## SPECIFICATIONS

### GENERAL FEATURES

- **Operating Voltage** ..... 8-17V
- **Power Consumption** ..... 0.24A
- **Recommended Fuse Rating** ..... 1A
- **Power Input Terminal Size** ..... 16ga
- **LED Indicator** ..... Power / Bass Enhancer / Clip
- **Ground Isolation Switch** ..... Yes (GND/ISO/200Ω)
- **Remote Turn-on (Input / Output)** ..... Yes
- **Remote Level Control** ..... Yes (Bass Enhancer / LED clip)
- **RCA Connector Type** ..... Tiffany (Silver)
- **Compact Size for an easy Installation in any Application** ..... Yes
- **Surface Mount Component Technology** ..... Yes
- **Quality Control Verification using Audio Precision Instruments** ..... Yes
- **Housing Material** ..... Aluminum

- **Body Color** .....  
Black

## AUDIO SPECIFICATIONS

- **Frequency Response**..... 10Hz-20kHz
- **S/N Ratio**  
.....120dB
- **THD**.....  
0.0022%
- **Input Sensitivity (Low-Level)**..... <10V
- **Input Impedance**.....  
20Kohms
- **Output Voltage** ..... Selectable (5V/7.5V/10V)
- **Output Impedance** .....100ohms
- **Balanced Input Noise Rejection** .....>60dB
- **Stereo Separation**  
.....>80dB

## CROSSOVER SECTION

- **Subwoofer LPF Frequency Cut-off** .....No (Full Range Signal)
- **Subwoofer Infrasonic Frequency Cut-off**..... Selectable (35/50/80Hz)

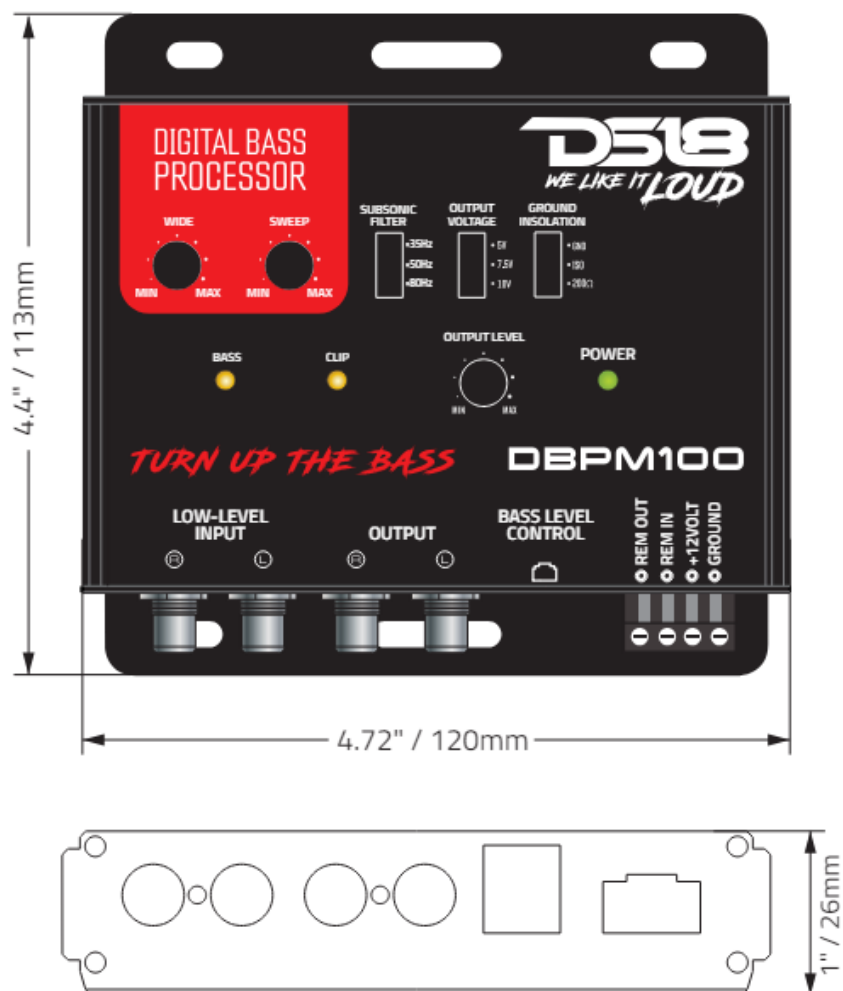
## BASS PROCESSOR SECTION

- **Gain**.....0~8.8
- **Center Frequency (Sweep)** ..... 75Hz~120Hz
- **Q Factor (Wide)** .....  
1~3

## MEASUREMENTS

- **Overall Length**..... 4.72" / 120mm
- **Overall Width** .....4.4" / 113mm
- **Overall Height** ..... 1" /  
26mm


## MEDIDAS



**WARNING:** Cancer and Reproductive Harm. [www.P65Warning.ca.gov](http://www.P65Warning.ca.gov)

DIGITAL BASS PROCESSOR PROCESADOR DE BAJO DIGITAL

## Documents / Resources

	<p><a href="#">DS18 DBPM100 Digital Bass Processor</a> [pdf] Owner's Manual DBPM100 Digital Bass Processor, Digital Bass Processor, Bass Processor, Processor</p>
---	---

## References

- [User Manual](#)

