



DS18 CA-X3DS6 CAN-AM X3 Dashboard User Manual

[Home](#) » [DS18](#) » DS18 CA-X3DS6 CAN-AM X3 Dashboard User Manual 

Contents

- [1 DS18 CA-X3DS6 CAN-AM X3 Dashboard](#)
- [2 WHAT'S IN THE BOX](#)
- [3 INSTALLATION](#)
- [4 MEASUREMENTS](#)
- [5 WARRANTY](#)
- [6 Documents / Resources](#)
- [7 Related Posts](#)



DS18 CA-X3DS6 CAN-AM X3 Dashboard



Product Information

The CA-X3DS6 is a dashboard panel designed specifically for the Can-Am X3. It is made of durable Polyethylene material and allows for the installation of one 6.5-inch speaker on each side of the dashboard. These panels come in pairs for both the driver and passenger sides. The installation of these panels requires the use of factory bolts, making it easy to install and mount the speakers securely. It is important to note that the placement of the driver's side speakers can affect the performance of the Smart-Lok module if equipped. This can result in inadvertent correction of the steering wheel, impacting the driving experience and potentially posing a danger. To avoid this issue, the module will need to be recalibrated at a servicing Can-Am dealer or relocated using a Smart-Lok Module Relocation Kit.

Product Usage Instructions

Step 1

Locate the factory dash panels and remove the 7 screws (T-30 Torx) with 2 clip retainers for the driver side and the 5 screws (T-30 Torx) with 2 clip retainers for the passenger side.

Step 2

If the vehicle is equipped with the Smart-Lok module, first Disconnect the negative battery post located behind the passenger side seat. Then, safely unplug the Smart-Lok module and disconnect all left-side rocker switches to remove the factory dash panel.

Step 3

Once the panel is out of the vehicle, place it face down and remove the Smart-Lok module from the factory panel (if equipped) by removing the 4 x 8mm screws from the bracket. Transfer the module to the new CA-X3DS6 panel using the same 8mm factory bolts.

Step 4

Transfer the rocker switches from the factory panel to the new CA-X3DS6 panel by pushing them from their base. Make sure to Transfer them in the same order as before to ensure proper wiring fit.

Step 5

Transfer the clip retainers with their washers on both sides of the panel.

Step 6

Reinstall the panels by snapping them into place. Reconnect the Smart-Lok module (if equipped) and the rocker switches. Secure the panels with the same factory screws and pins to complete the installation of the CA-X3DS6 panels.

Note: Before connecting the speakers, ensure that an aftermarket amplifier is pre-installed with the speaker wires in the designated location. Only after this step, connect the speakers using the aftermarket amp's speaker wire and RGB LED wires (optional) of the LED module (LED -BTC not included). Secure the speakers using stainless steel screws, being careful not to over-tighten and potentially damage the holes.

INTRODUCTION

If you're looking to maximize sound in your Can-Am X3, you may consider adding these durable Polyethylene Dashboard Panels by DS18. These panels allow you to mount one 6.5" Speakers on each side that your stereo system deserves. These panels come in pairs (Driver and passenger) and they are very easy to Install using factory bolts that fit directly into place.

FEATURES

- Panels Sold as a Set for Driver and Passenger Sides.
- Easy to install using Factory bolts and location.
- OFC tinned wiring for more power handling and durability.

- 6 core 0.6M Input Wires for Speaker and RGB Lighting.
- Fits all Can-Am X3 from 2017 to 2023.
- Black OEM finish.
- Fits any 6.5" DS18 Speakers. (Not included)
- Durable (PE) waterproof Panels with UV Protection.
- Open Baffle Speaker Panel Design.

SPEAKERS PARAMETERS

- Speaker Mounting Hole: 5.7" / 145mm.
- Speaker Mounting Depth: up to 3" / 76mm.

WHAT'S IN THE BOX

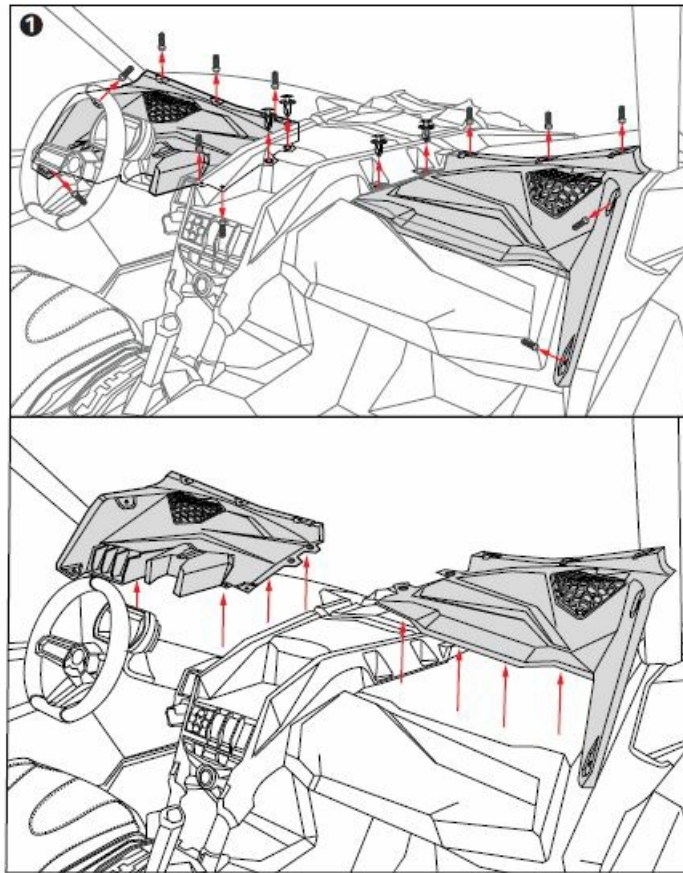
- Left and right Speaker Panels
- Speaker Wiring Harness

TRAIL ACTIV SMART

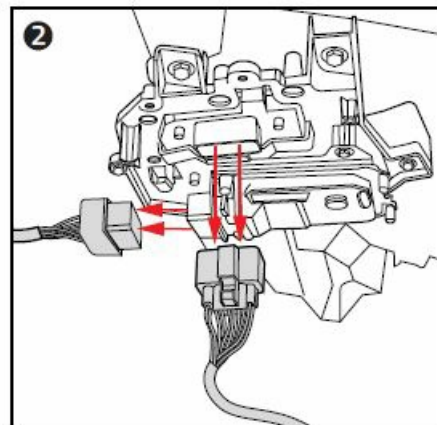
MODULE DISCLAIMER: The placement of the driver's side speakers can affect the performance of the Smart-Lok module if equipped, resulting in inadvertent correction of the steering wheel, which affects the driving experience and can be dangerous if not corrected correctly. After installation of these speaker panels, you will need to have the module recalibrated at a servicing Can-Am dealer or relocate the module with a Smart-Lok Module Relocation Kit to avoid this issue.

INSTALLATION

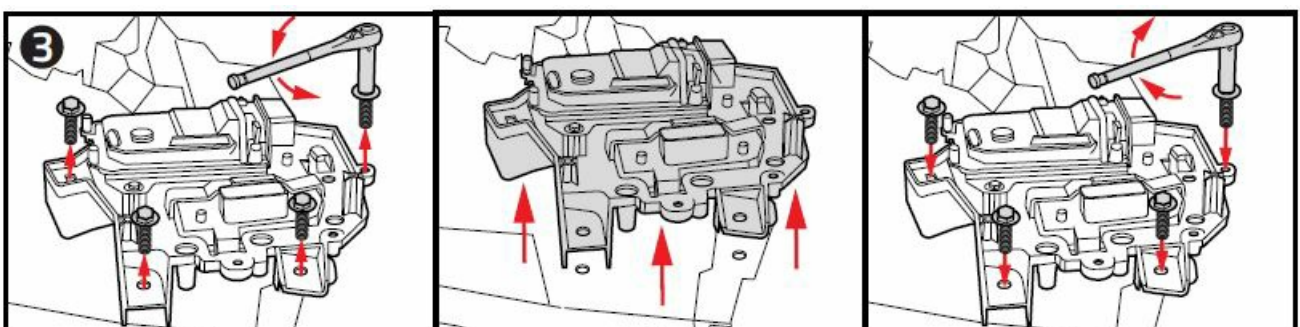
Step 1: Locate the factory dash panels and remove the 7 screws (T-30 Torx) with 2 clip retainers for the driver side and the 5 screws (T-30 Torx) with 2 clip retainers for the passenger side as you can see in image #1.



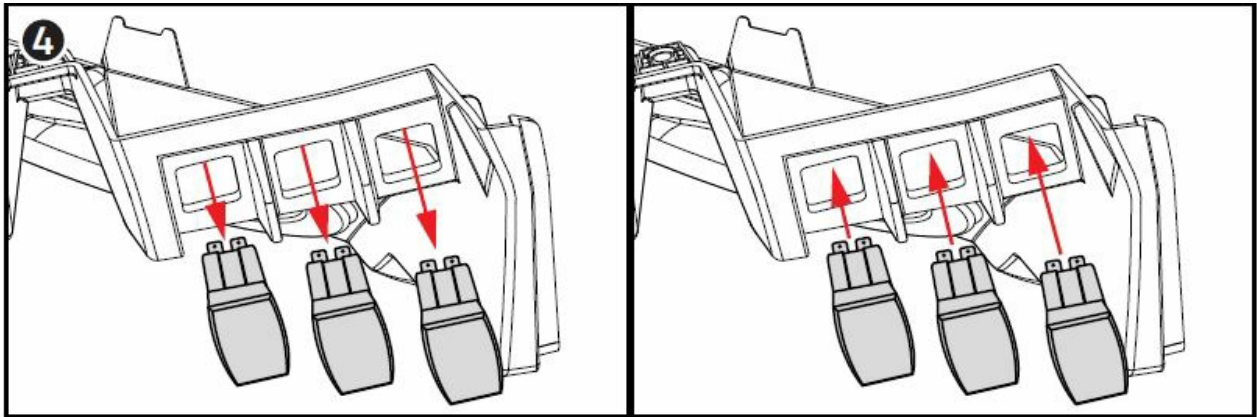
Step 2: If the vehicle is equipped with the Smart-Lok module, first disconnect the negative battery post, located behind the passenger side seat. You can safely unplug the Smart-Lok module and disconnect all the left side rockers switches to remove the factory dash panel as you can see in image #2.



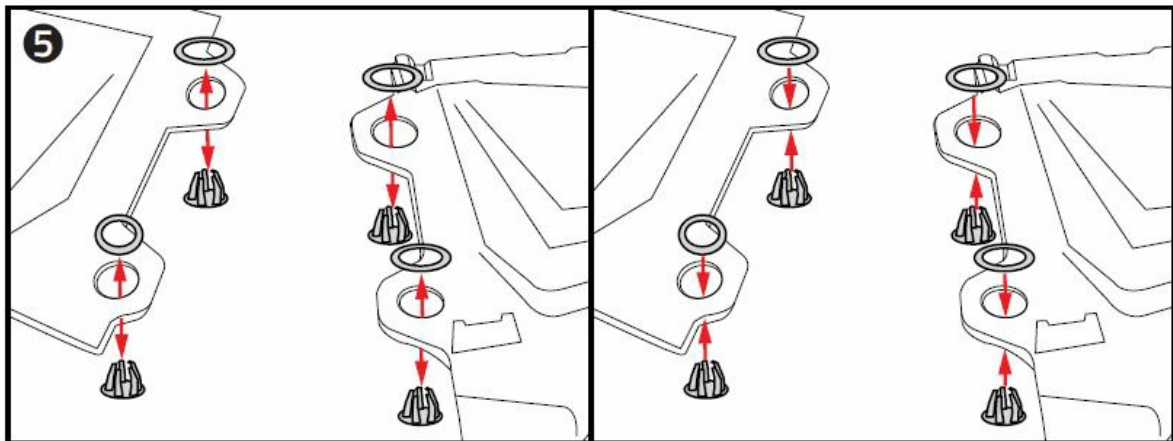
Step 3: Once you have the panel out of the vehicle, place it face down, and remove the Smart-Lok module from the factory panel (if equipped) by removing the 4 x 8mm screws from the bracket and transfer to the new CA-X3DS6 panel using the same 8mm factory bolts as you can see in image #3



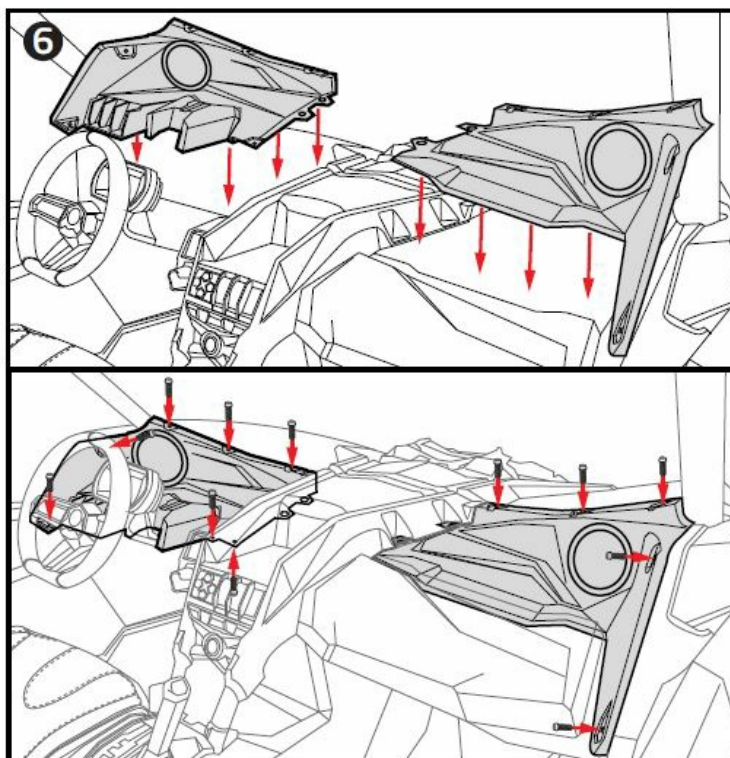
Step 4: Transfer the rocker switches from the factory panel to the new CA-X3DS6 panel simply by pushing them from their base, Don't forget to do it in the same order as before so The wiring will fit correctly



Step 5: Transfer the clip retainers with their washers from the factory panel to the new CA-X3DS6 panel on both sides as you can see in image #5.



Step 6: Reinstall the panels by snapping them into place, Reconnect the Smart-Lok module (if equipped) and the rocker switches, then you can secure the panels with the same factory screws and pins, this concludes The installation of the CA-X3DS6 panels as you can see in image #6.



NOTES: This kit needs an aftermarket amplifier pre-installed with the speaker wires in this location, Only after this step can you connect the speakers using the aftermarket amp's speaker wire and RGB LED wires (optional) of the LED module (LED -BTC not included). Secure the speakers using stainless steel screws and tighten them, be careful not to over-tighten or The hole may be damaged and not properly secure the speakers

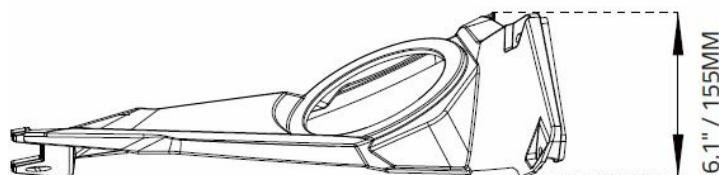
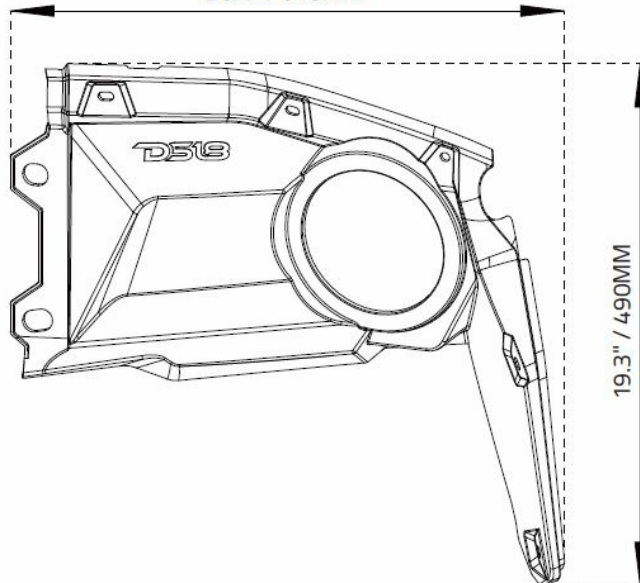
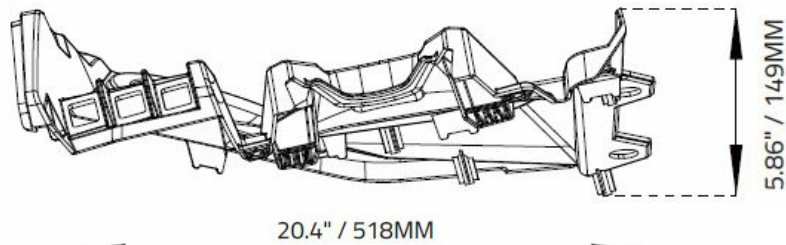
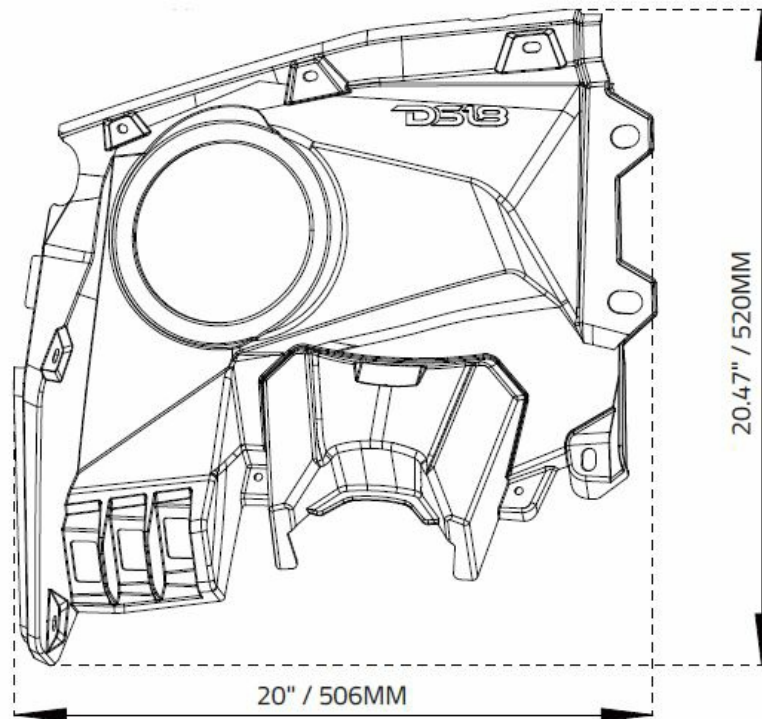
GENERAL SPECIFICATIONS / ESPECIFICACIONES GENERAL

- Box Type Front Baffle
- Box Material Polyethylene (PE)
- Finish MaterialBlack
- UV Protection
..... Yes
- Waterproof Rating IP65
- Input Wire (Harness)6 Core OFC Tinned (2ft / 0.6m)

MEASUREMENT / MEDIDAS

- Overall Height (Driver Side) 5.86" / 149mm
- Overall Width (Driver Side)20" / 506mm
- Overall Depth (Driver Side) 20.47" / 520mm
- Overall Height (Passenger Side)6.1" / 155mm
- Overall Width (Passenger Side)..... 20.4" / 518mm
- Overall Depth (Passenger Side) 19.3" / 490mm
- Speaker Mounting Hole5.7" / 145mm

MEASUREMENTS




WARRANTY

Please visit our website DS18.com for more information on our warranty policy. We reserve the right to change products and specifications at any time without notice. Images may or may not include optional equipment.

WARNING
Cancer and Reproductive Harm. www.P65Warning.ca.gov

Documents / Resources

	<p>DS18 CA-X3DS6 CAN-AM X3 Dashboard [pdf] User Manual</p> <p>CA-X3DS6 CAN-AM X3 Dashboard, CA-X3DS6, CAN-AM X3 Dashboard, Dashboard</p>
---	--

[Manuals+](#)