

DrunkDeer A75 Magnetic Switch Keyboard



# DrunkDeer A75 Magnetic Switch Keyboard User Manual

[Home](#) » [Drunkdeer](#) » DrunkDeer A75 Magnetic Switch Keyboard User Manual 

## Contents

- [1 DrunkDeer A75 Magnetic Switch Keyboard](#)
- [2 Product Information](#)
- [3 Product Usage Instructions](#)
- [4 FAQ](#)
- [5 Package Content](#)
- [6 Wired Connection](#)
- [7 How to restore the keyboard to default settings](#)
- [8 About The Magnetic Switch](#)
- [9 How To Switch The Operating Layout](#)
- [10 Control The Volume With The Knob](#)
- [11 Specification](#)
- [12 Documents / Resources](#)
  - [12.1 References](#)

# DrunkDeer<sup>®</sup>

## DrunkDeer A75 Magnetic Switch Keyboard



## Product Information

## Specifications

- **Keyboard Model:** A75
- **Keyboard Size:** 355mm\* 140mm\*45mm
- **Keyboard Weight:** 715 + 20 g
- **Layout:** ANSI 75%
- **Main Material:** ABS(Keycaps, Case);PBT Keycaps (option); Aluminium case (option)
- **Switch Type:** DrunkDeer Magnetic Switch
- **System Available:** Windows & Mac OS

## Product Usage Instructions

### Connecting the keyboard

If your device has a Type-C port (e.g., laptop), you can connect the keyboard directly using the provided Type-C cable.

### Restoring the keyboard to the default state

To restore the keyboard to its default state, press and hold the 'Fn2(Menu) + Esc' key combination for 3 seconds. The backlight will blink red for 3 seconds, indicating the restoration process.

### Setting the Rapid Trigger Mode

1. Select the desired key (e.g., WASD).
2. Set the Action Point, which is the point at which the keypress will be activated.
3. Enable the Rapid Trigger Mode.

### Key sensitivity setting

We recommend setting the sensitivity of the Rapid Trigger Mode to 0.2MM. Adjust this setting according to your preference.

### Saving settings to the keyboard

After configuring the Rapid Trigger Mode and key sensitivity, don't forget to click the 'Save to Keyboard' button at the end to save the settings to the keyboard.

## FAQ

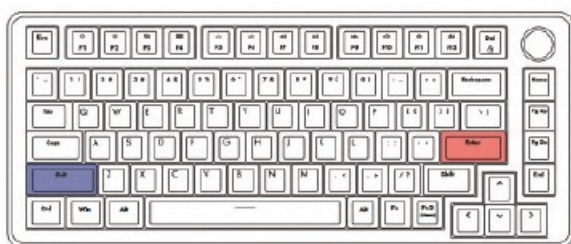
- How do I connect the keyboard to my device?
- If your device has a Type-C port, simply connect the keyboard using the provided Type-C cable.
- How do I restore the keyboard to its default state?
- Press and hold the 'Fn2(Menu) + Esc' key combination for 3 seconds. The backlight will blink red, indicating the successful restoration.
- What is the Rapid Trigger Mode?
- The Rapid Trigger Mode allows you to set a specific point at which a keypress will be activated, providing faster response times.

- How do I adjust the key sensitivity in the Rapid Trigger Mode?
- You can adjust the key sensitivity by setting the desired value, preferably around 0.2MM. This sensitivity setting determines how much pressure is required to activate a keypress.
- How do I save my settings to the keyboard?
- After configuring the Rapid Trigger Mode and key sensitivity, click the 'Save to Keyboard' button at the end to save the settings directly to the keyboard's memory.

## Package Content

- A75 MS Keyboard \*1
- USB Type-C Cable \*1
- Dustproof Cover \*1
- Keycap Puller \*1
- Quick Guide \*1
- Extra Switch \*2

**A75 MS Keyboard**



**Quick Guide**



**Keycap Puller**



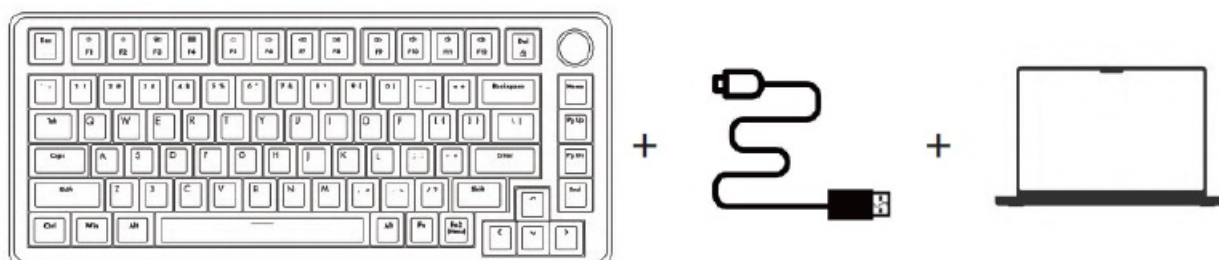
**Dustproof Cover**



**USB Type-C Cable**

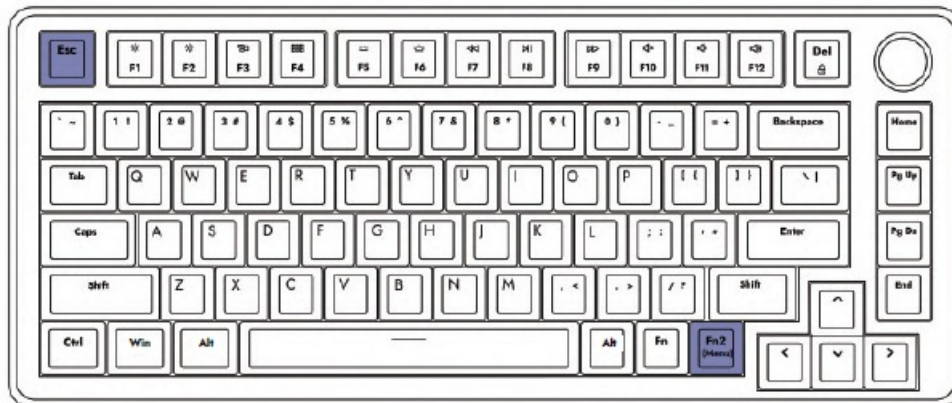


## Wired Connection



- For the devices with Type-C ports(Laptop, for example), you can connect the keyboard to the device with the Type-C cable directly.

## How to restore the keyboard to default settings



- You can restore the keyboard by key combination 'Fn2(Menu) + Esc' for 3 seconds. The backlight will blink red for 3 seconds and the keyboard will return to its default state.

## How To Adjust The Actuation Sensitivity

- Select the key(Example WASD)

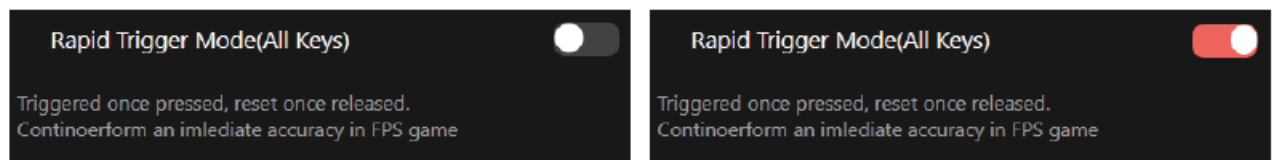


- Set Action Point Set the point to activate a key press



## How To Set The Rapid Trigger Mode

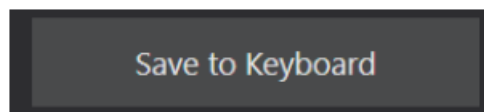
- Enable the Rapid Trigger Mode



- Key sensitivity setting (We Recommend that You Set the Sensitivity of the RT to 0.2MM)

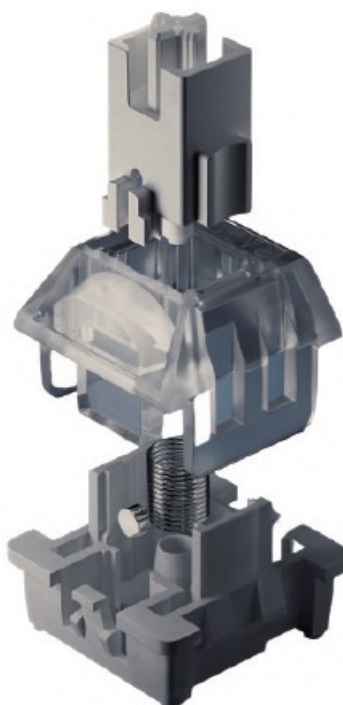


- Don't Forget to Click the 'Save to Keyboard' Button at the end

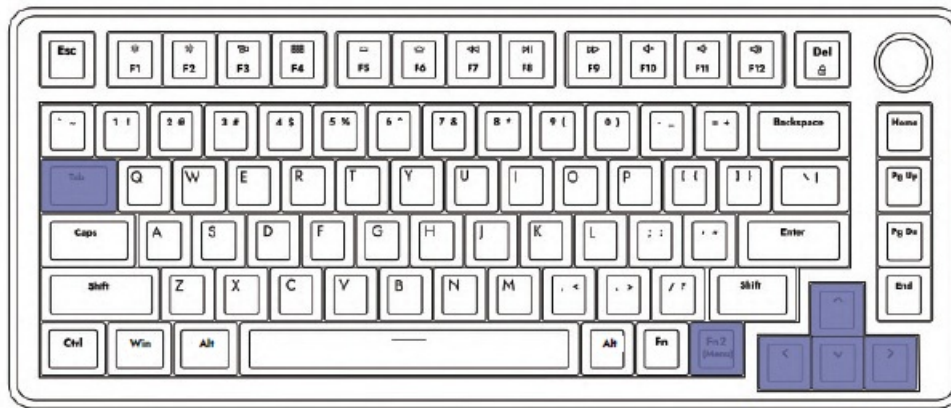


## About The Magnetic Switch

- Magnetic Switches utilize Hall Sensors to determine the distance a key is pressed by measuring the strength of the magnetic field.
- It makes it possible to customize the trigger point (actuation point) to your preferred level of pressure and distance, accommodating all typing styles.
- Whether you bottom out or barely touch the keys, we've incorporated adaptive typing to provide noticeable comfort improvement for everyone.
- MS doesn't rely on physical contact, which can wear down the key over time.
- These switches can be pressed hundreds of millions of times.
- This is vastly superior to the metal contacts of conventional switches.



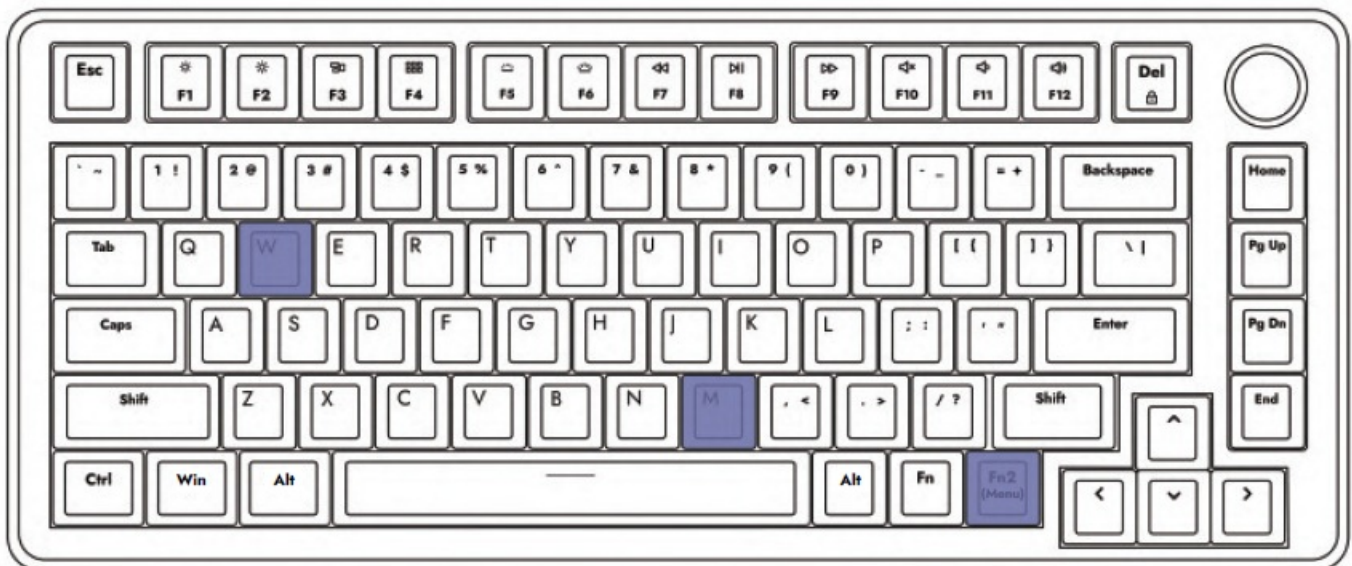
## How To Control The Backlight Effect



The backlight effect can be changed by key combination as follows:

- Fn2 (Menu) + **Tab**: Change the backlight colour (Only for certain effects)
- Fn2 (Menu) + **←**: Previous backlight effect
- Fn2 (Menu) + **→**: Next backlight effect
- Fn2 (Menu) + **↑**: Increase the backlight brightness
- Fn2 (Menu) + **↓**: Decrease the backlight brightness

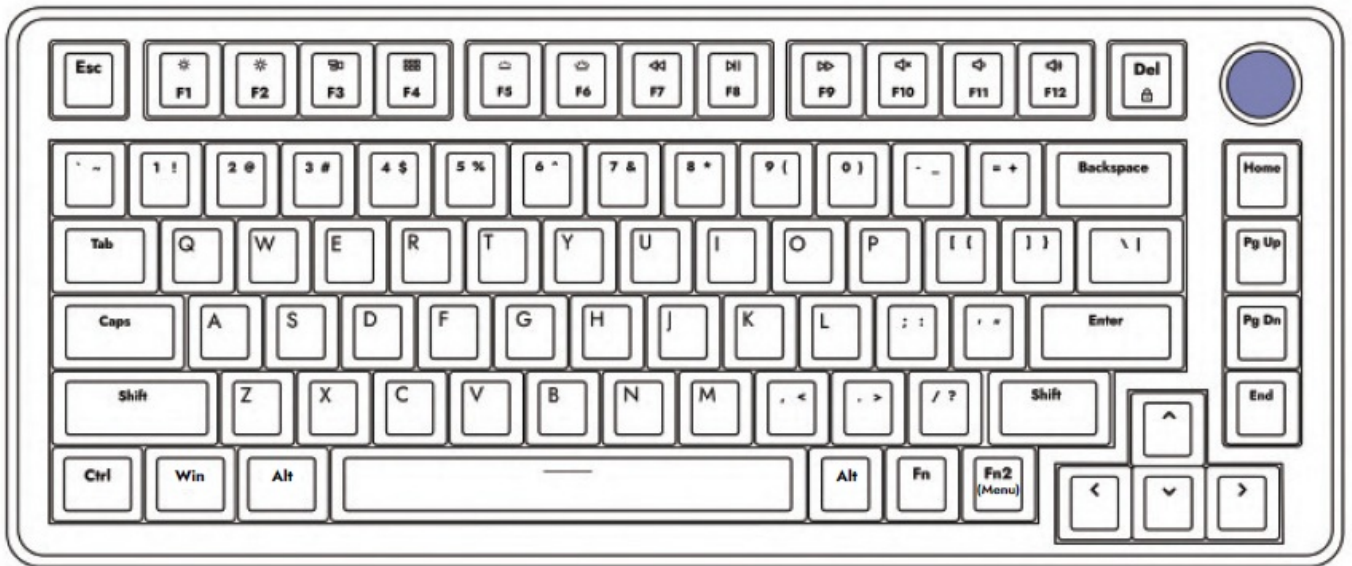
## How To Switch The Operating Layout



- The operating layout of the A75 can be changed by key combinations as follows:
- Fn2(Menu) + M: Switch to the Mac OS
- Under the MacOS layout, the function keys on F1 to F12 are available without other driver programs.
- Fn 2 (Menu)+ W: Switch to Windows Under the Windows layout, the function keys would retain the original key value.

## Control The Volume With The Knob





- Whether it's MacOS or Windows layout, the volume of the computer can be controlled directly by turning the knob.



- You can also play or pause music/video by pressing the knob.



## Specification

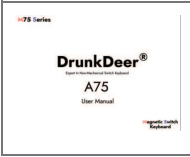
- **Keyboard Model:** A75
- **Keyboard Size:** 355mm\* 140mm\*45mm
- **Keyboard Weight:** 715 + 20 g
- **Layout:** ANSI 75%
- **Main Material:** ABS(Keycaps, Case);PBT Keycaps (option); Aluminium case (option)
- **Switch Type:** DrunkDeer Magnetic Switch
- **System Available:** Windows & Mac OS

## Caution

- Please DO NOT place the keyboard in a high-temp or strong magnetic environment.
- We DO NOT recommend disassembling or modifying this keyboard.
- Due to the characteristics of magnetic switches, abnormal environments such as severe impact, high temperature, and strong magnetic fields may cause the keyboard to malfunction.
- If you have other questions, please feel free to contact us at [hello@drunkdeer.com](mailto:hello@drunkdeer.com) or go to our official website [www.drunkdeer.com](http://www.drunkdeer.com) for further information and help.

---

## Documents / Resources

 The image shows the cover of the DrunkDeer A75 User Manual. It features the DrunkDeer logo at the top, followed by 'A75' and 'User Manual'. There is a small red and white logo at the bottom right.	<p><a href="#">DrunkDeer A75 Magnetic Switch Keyboard</a> [pdf] User Manual</p> <p>A75 Magnetic Switch Keyboard, A75, Magnetic Switch Keyboard, Switch Keyboard, Keyboard</p>
--	---

## References

- [User Manual](#)