

Drilling Instructions manual

[Home](#) » [Drilling](#) » Drilling Instructions manual

Kwikset

1-800-327-5625

www.kwikset.com

Drilling Instructions

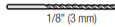
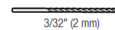
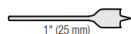
Weiser

USA: 1-800-677-5625

Canada: 1-800-501-9471

www.weiserlock.com

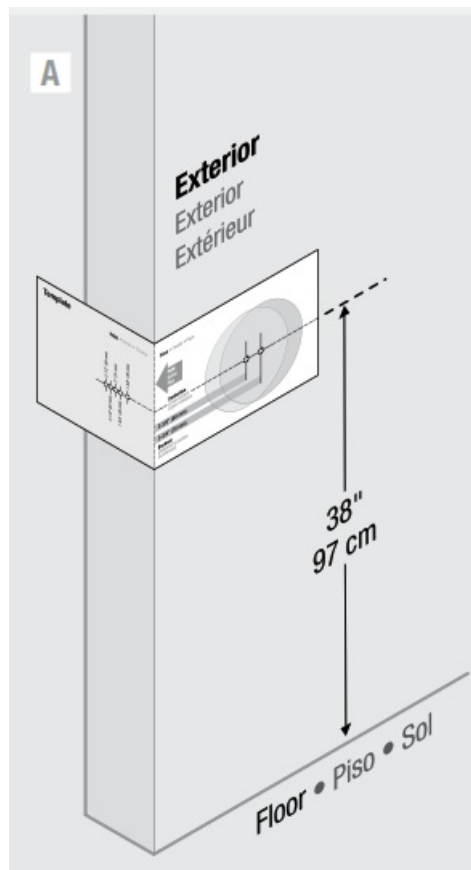
Tools Needed • Herramientas necesarias • Outils nécessaires



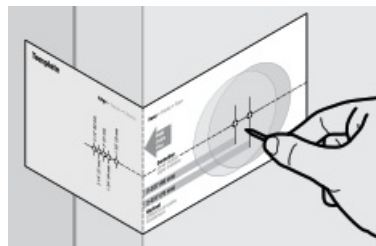
Contents [[hide](#)]

- [1 Use the template to mark holes on the door](#)
- [2 Drill holes indoor](#)
- [3 Determine which latch will be installed and prepare door edge](#)
- [4 Prepare door frame for strike](#)
- [5 Related Posts](#)

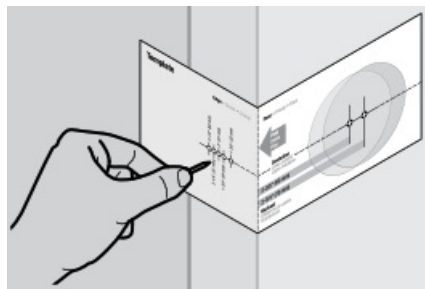
Use the template to mark holes on the door



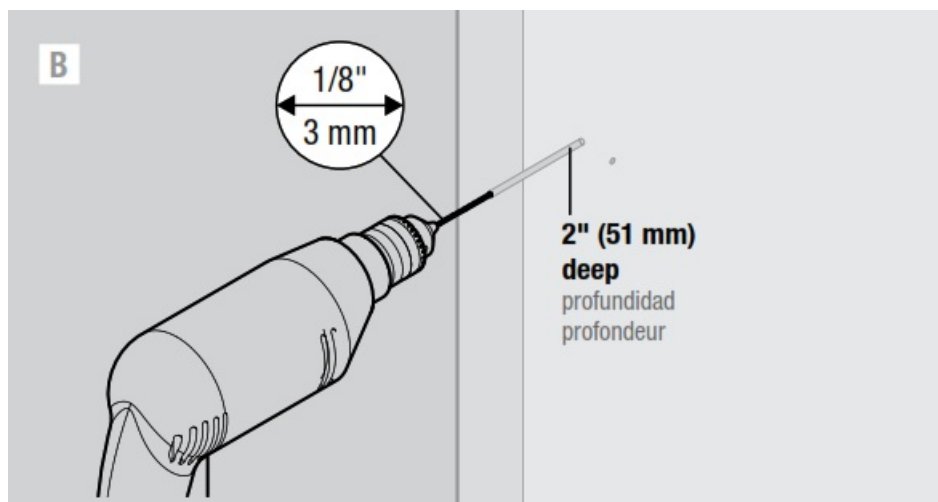
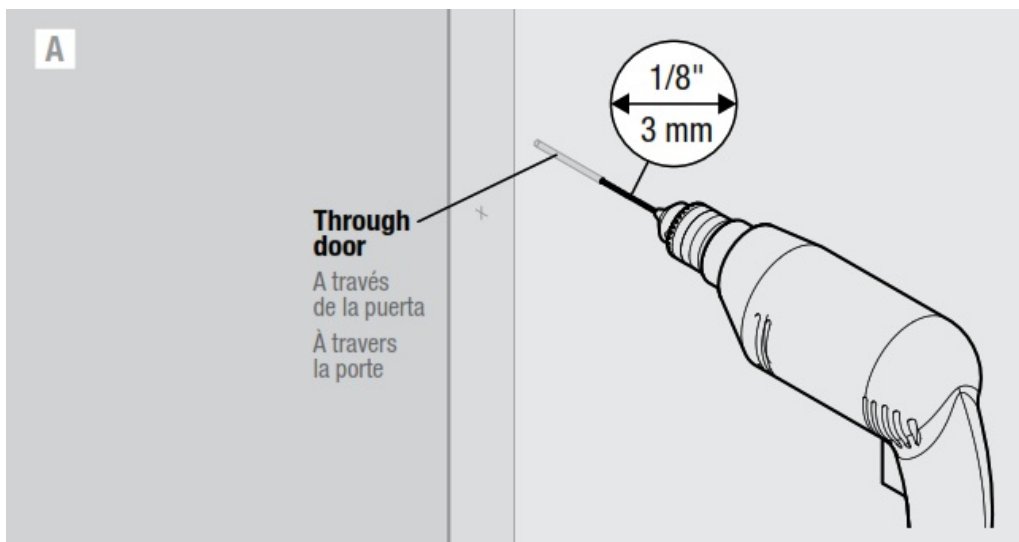
- A. Select the template that allows you to place the template on the EXTERIOR side of the door. Fold template along fold line and place fold line along the edge of the door. Place centerline approximately 38" (97 cm) from the door.
- B. Mark hole on the face of the door. Select desired backset before marking hole. If there is another Bhole in the door, or if you are drilling double doors, make sure to keep the backset consistent.



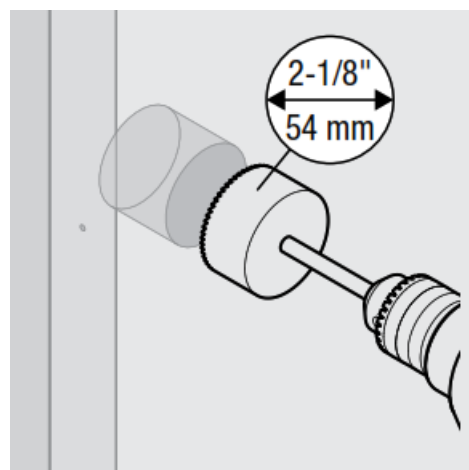
- C. Mark hole on the edge of the door. Select door thickness before marking hole.

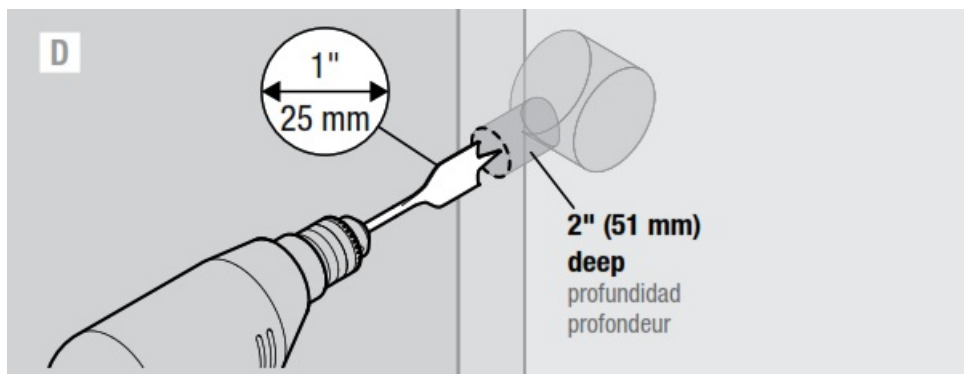


Drill holes indoor



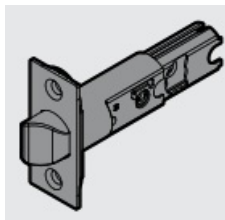
C. Drill from one side until the point of the drill just breaks through, then complete hole from the other side to prevent splintering.



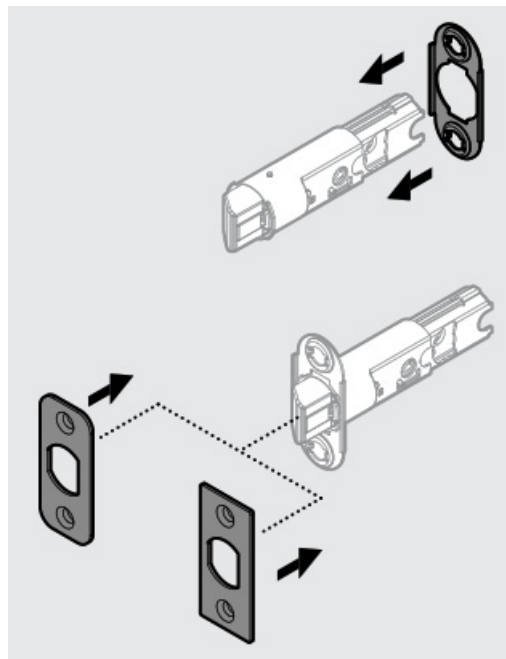


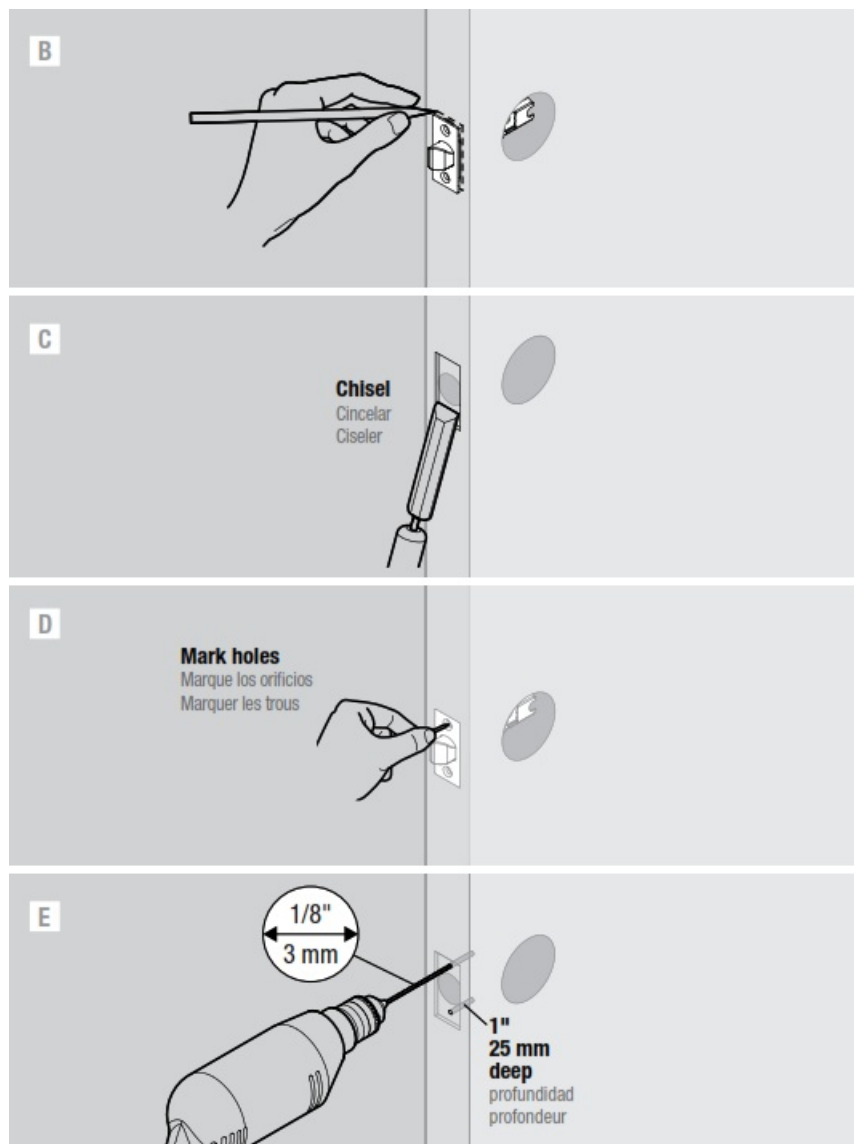
Determine which latch will be installed and prepare door edge

Latch with rectangular faceplate

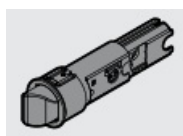


A. If the latch is not pre-assembled with the desired faceplate, assemble it as shown. If the desired faceplate is not supplied with the latch, please contact Consumer Support.





Latch with drive-in collar

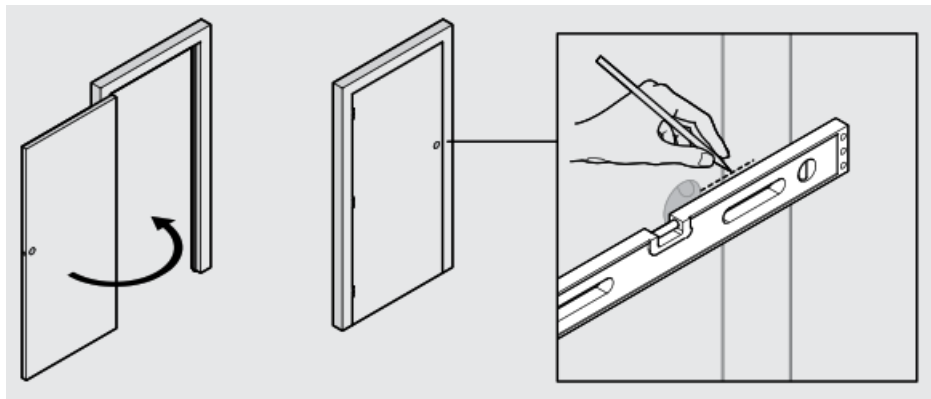


Proceed to Step 4.

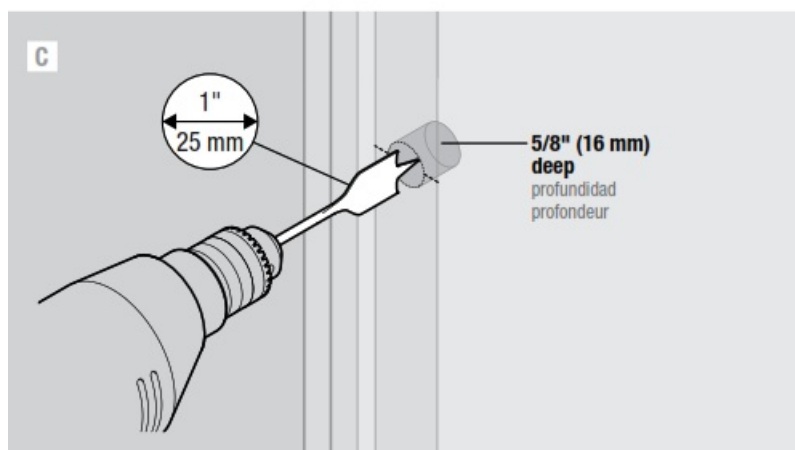
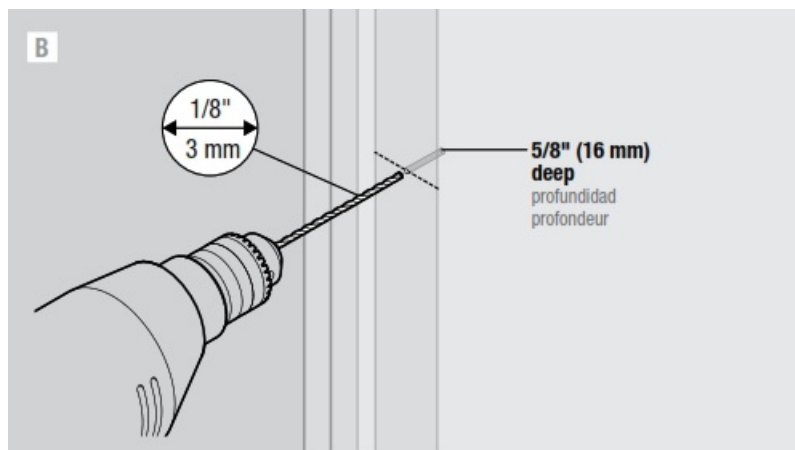
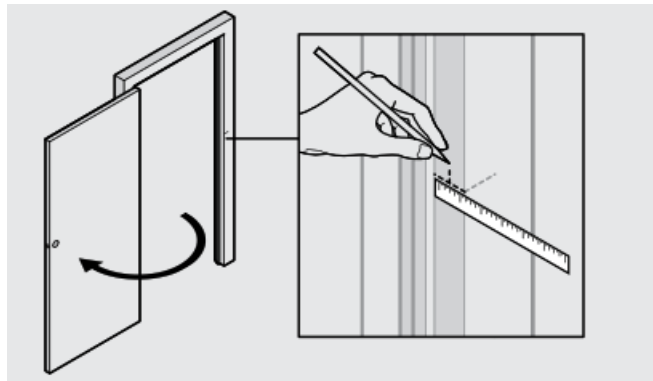
Prepare door frame for strike

A. Locate the center of the strike hole:

Draw a level line from the center of the borehole across the frame.



Measure back from a doorstop, 1/2 thickness of the door.

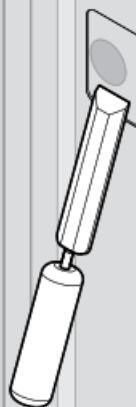


D**Keep level and trace.**

Mantengala nivelada y calque.
Maintenir en position et tracer.

**E**

Chisel
Cincelar
Ciseler

**F****Mark holes (2x)**

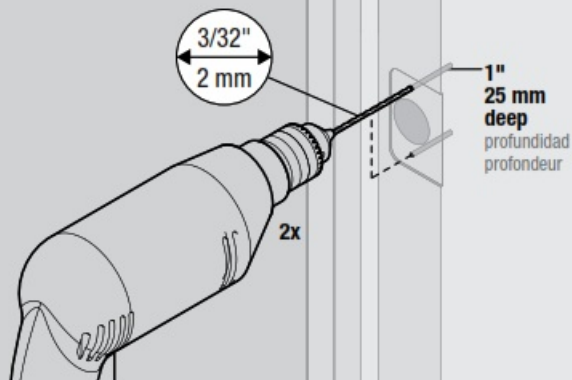
Marque los orificios (2x)
Marquer les trous (2x)

**G**

$\frac{3}{32}$ "
2 mm

1"
25 mm
deep
profundidad
profondeur

2x



© 2014 Spectrum Brands, Inc.

Drilling Instructions – [Download \[optimized\]](#)

Drilling Instructions – [Download](#)

[Manuals+](#), [home](#) [privacy](#)