

[Skip to content](#)

Manuals+

User Manuals Simplified.



DREMEL 4000 Variable Speed Rotary Tool Kit Instruction Manual

[Home](#) » [DREMEL](#) » DREMEL 4000 Variable Speed Rotary Tool Kit Instruction Manual

Contents [hide](#)

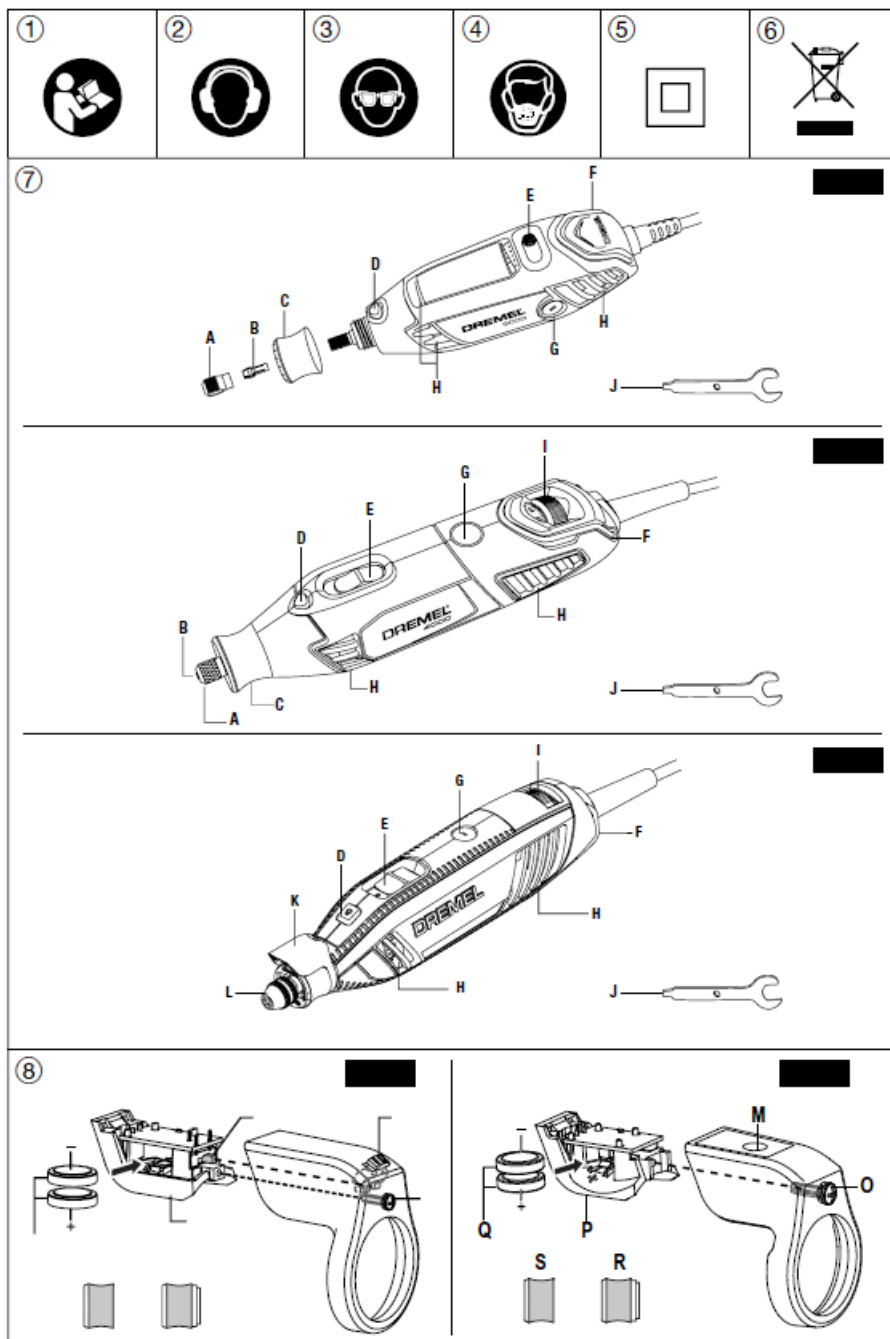
- [1 DREMEL 4000 Variable Speed Rotary Tool Kit](#)
- [2 Original instructions](#)
- [3 Overview](#)
- [4 Parts](#)
- [5 ACCESSORIES](#)
- [6 Assembly](#)
- [7 WARNING](#)
- [8 Specifications](#)
- [9 Maintain a firm grip on the power tool and position](#)
- [10 Documents / Resources](#)
- [10.1 References](#)
- [11 Related Posts](#)

DREMEL

DREMEL 4000 Variable Speed Rotary Tool Kit

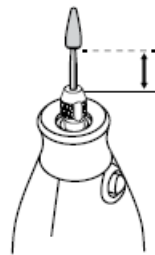
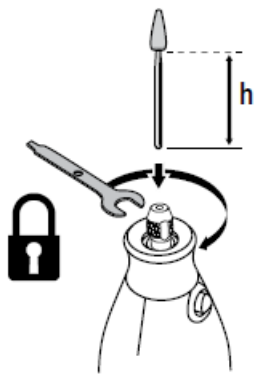
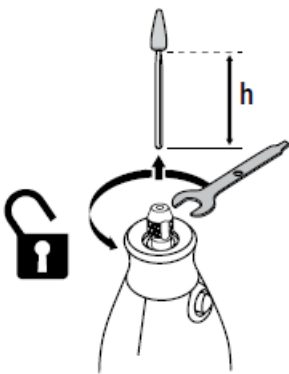
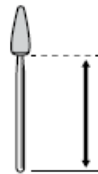
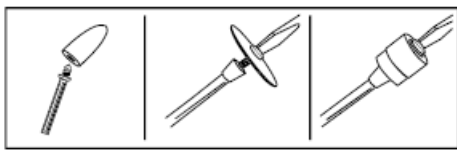
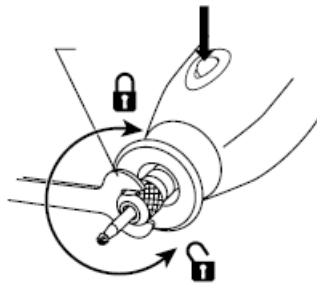
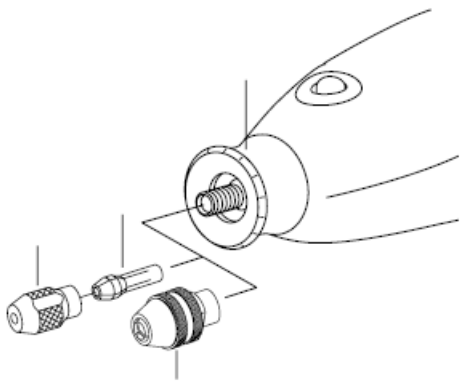


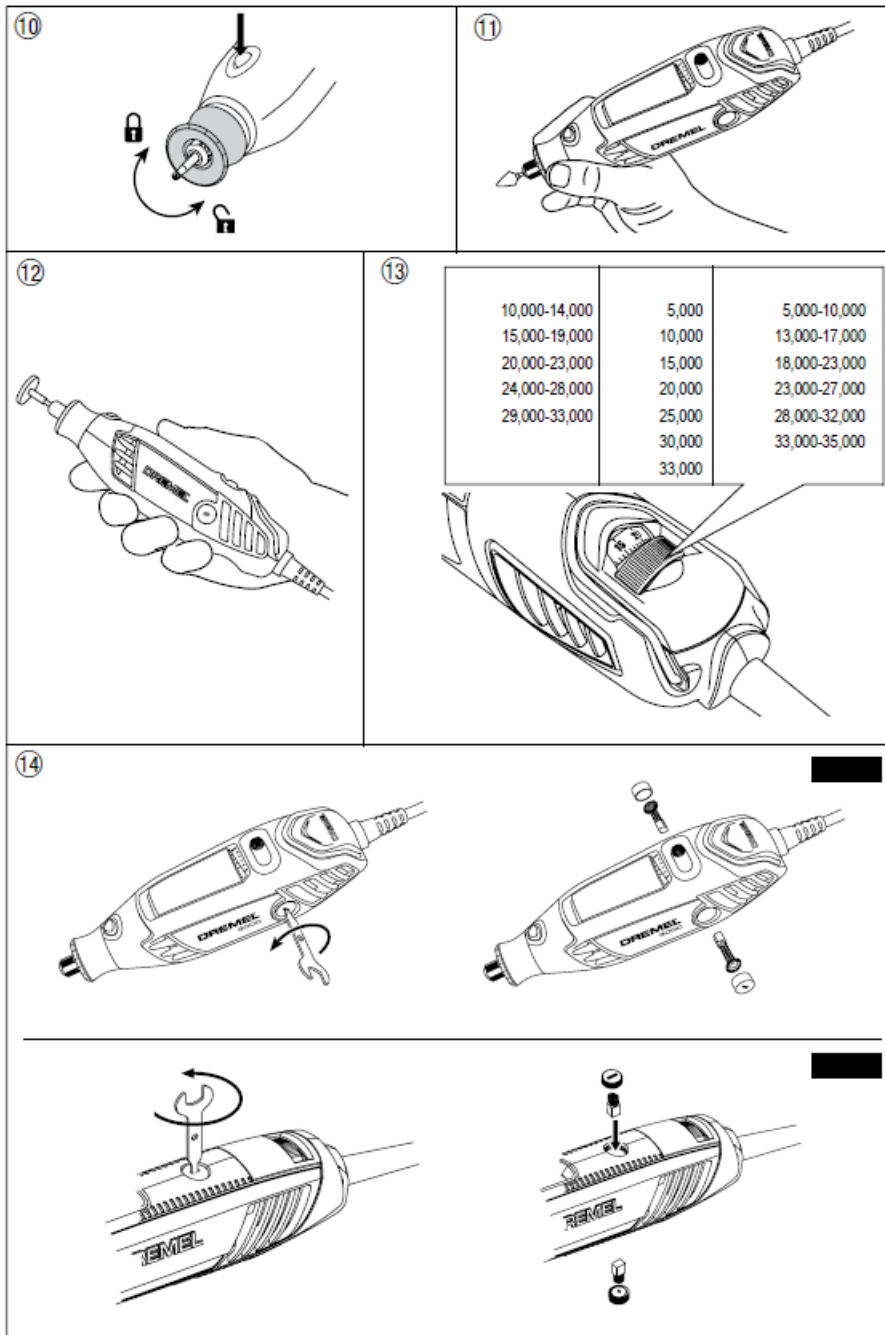
Original instructions



Technical file at:

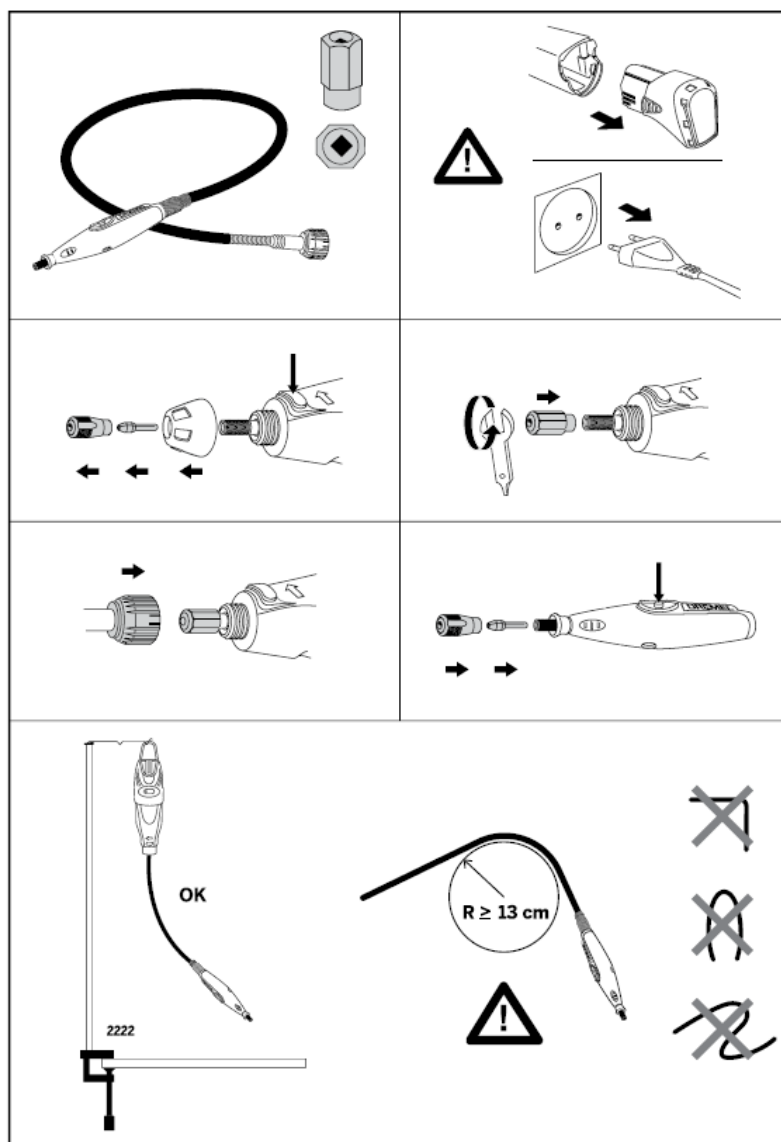
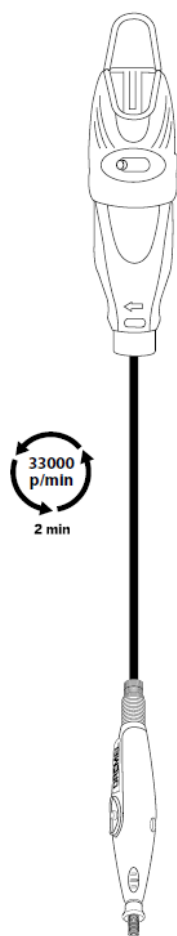
9



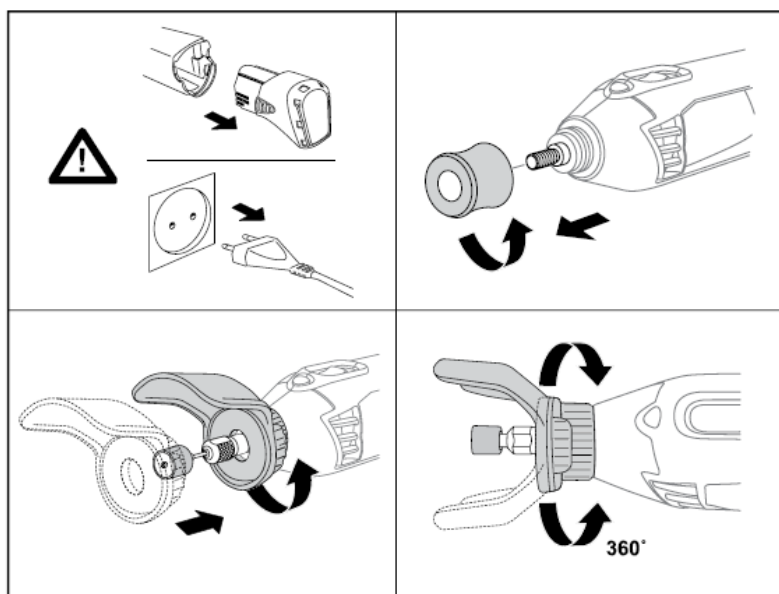


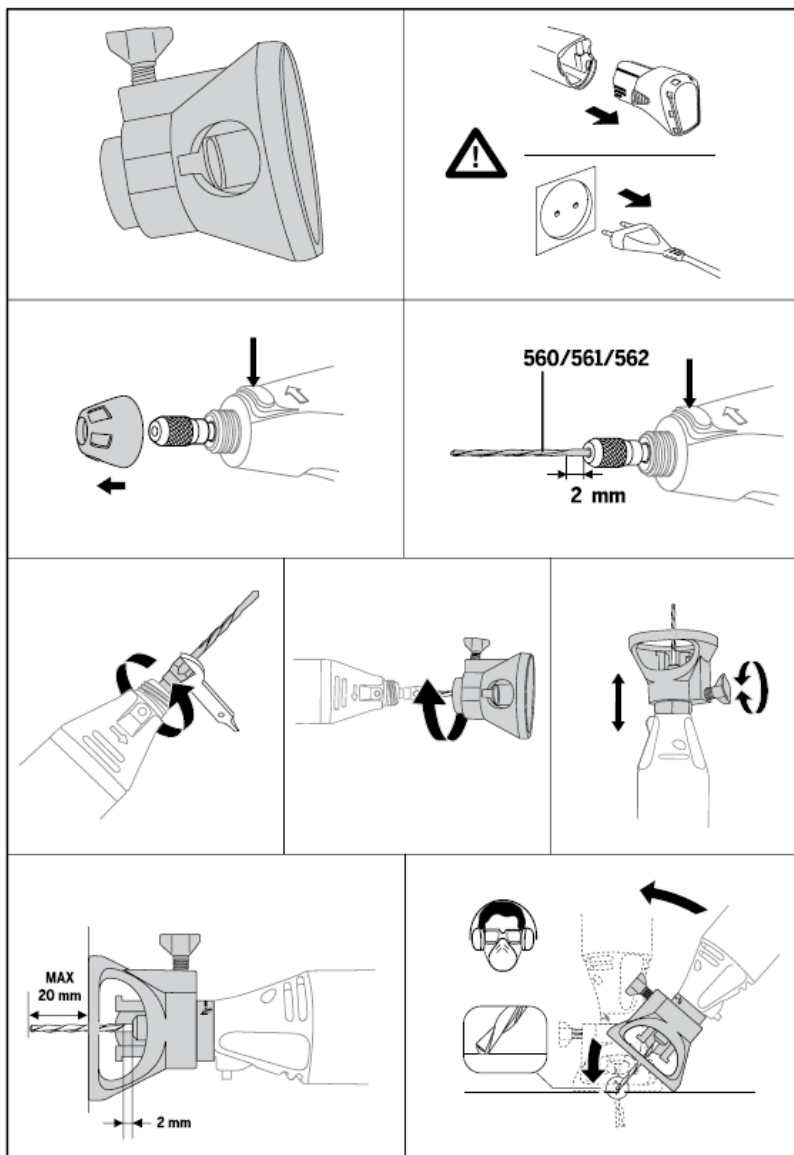
Overview

For optimum performance allow your new flex shaft to run at the right high-speed tool in a vertical position for a few 2

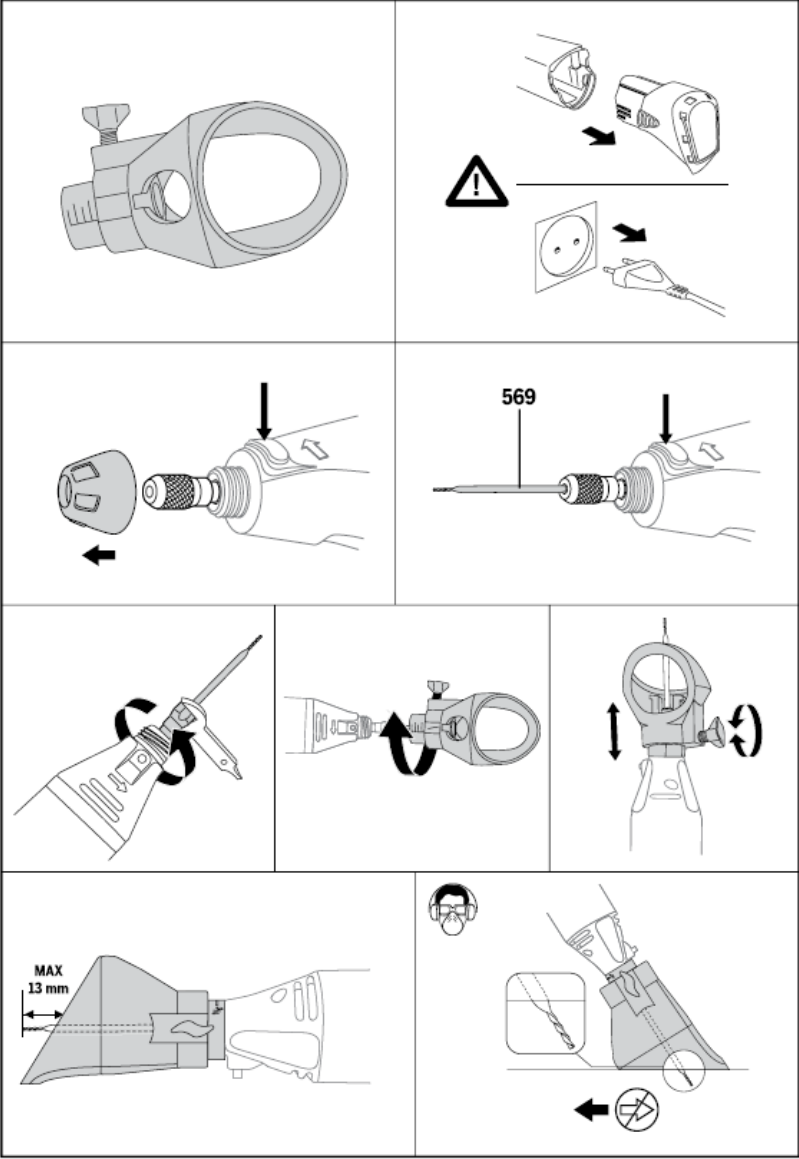


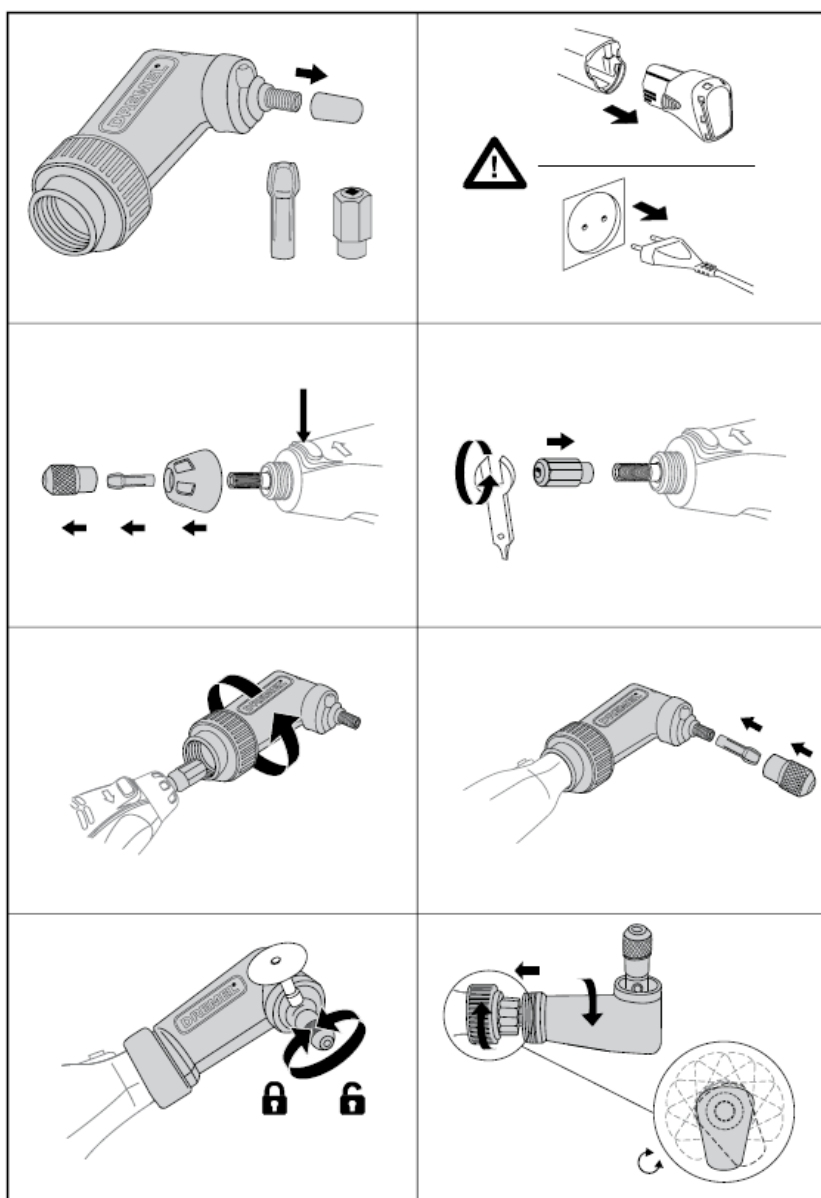
minutes.



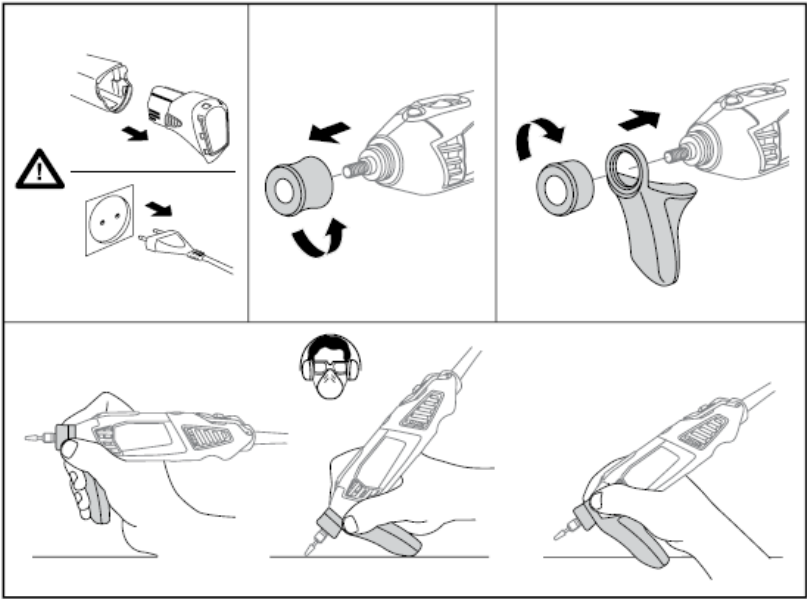
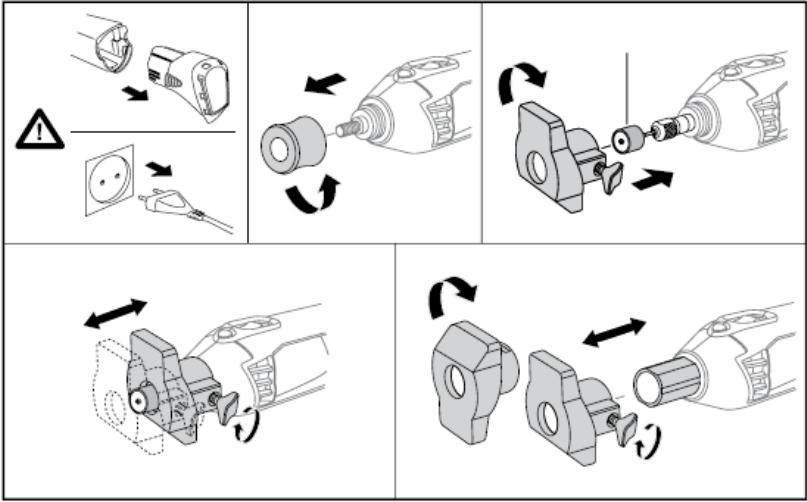


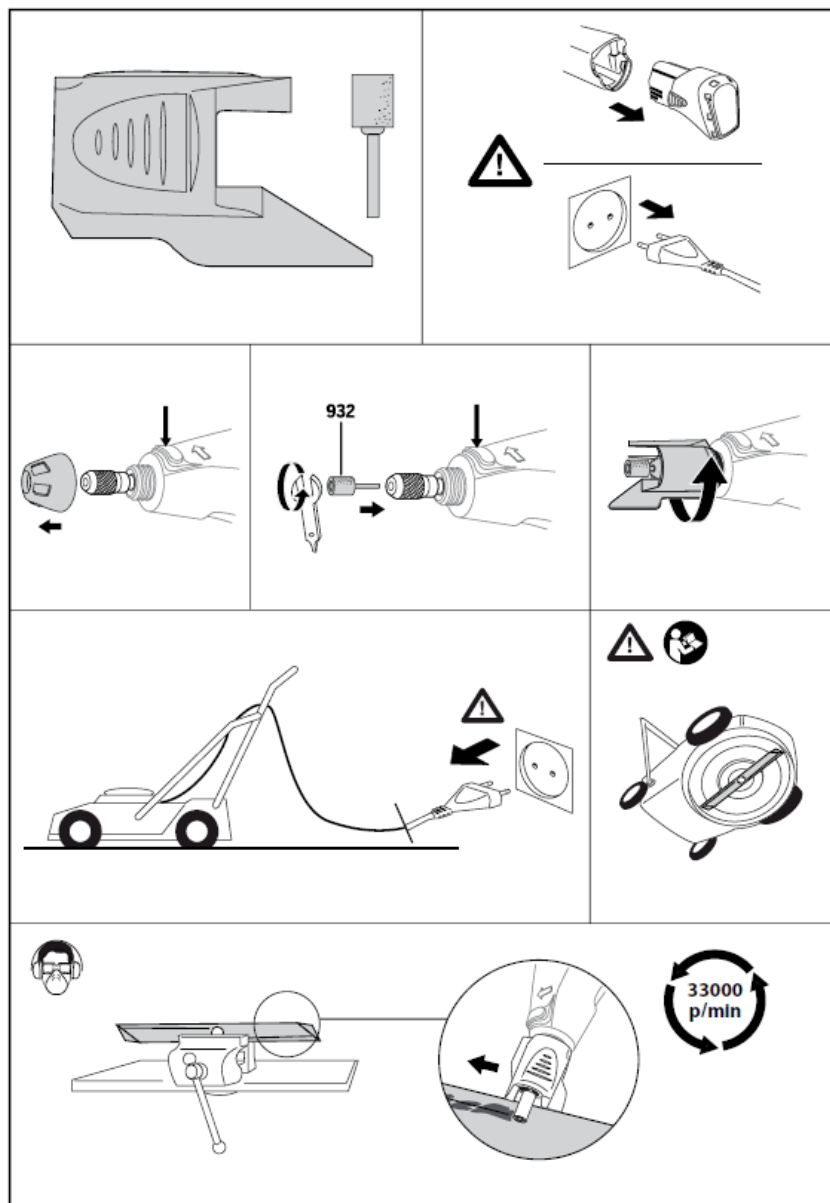
Parts

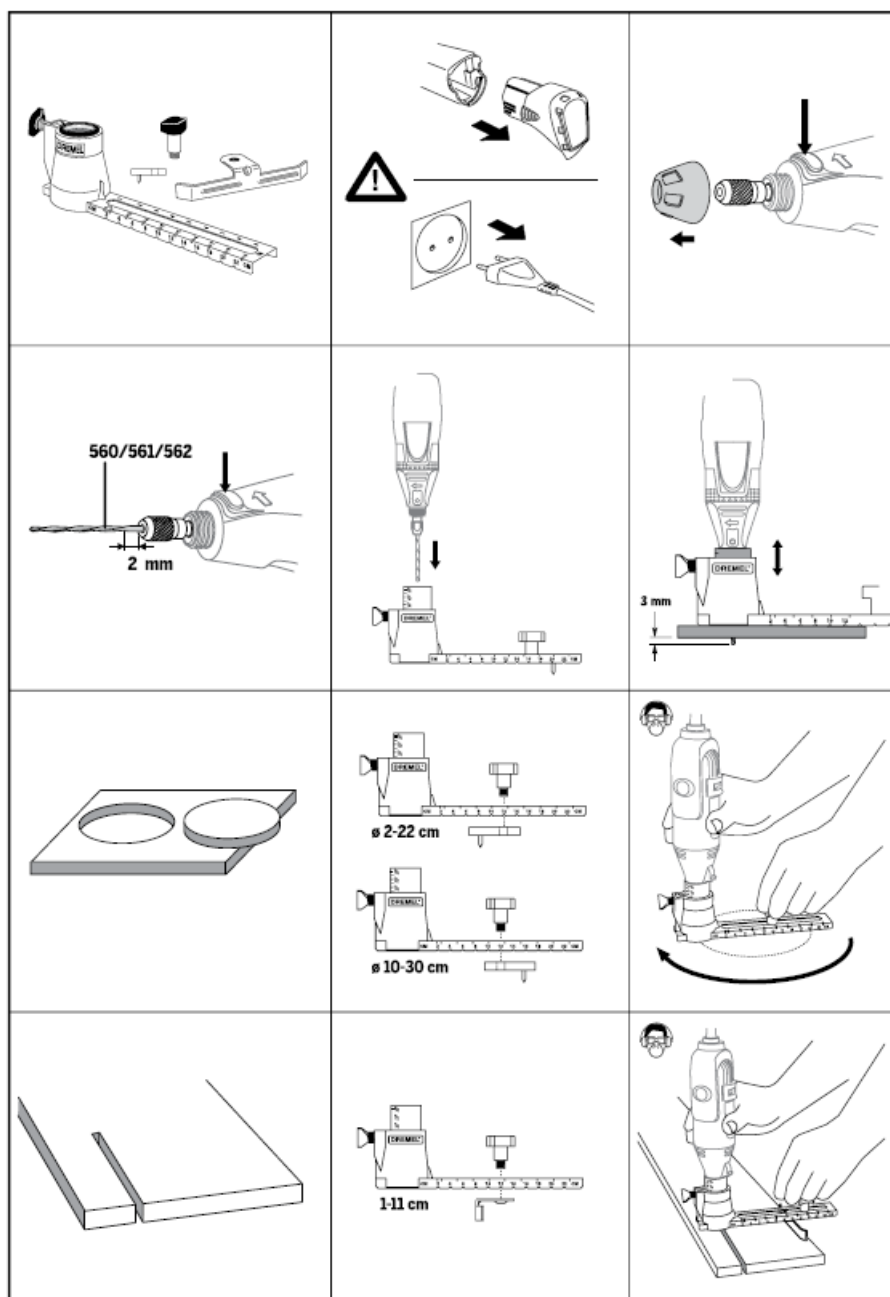




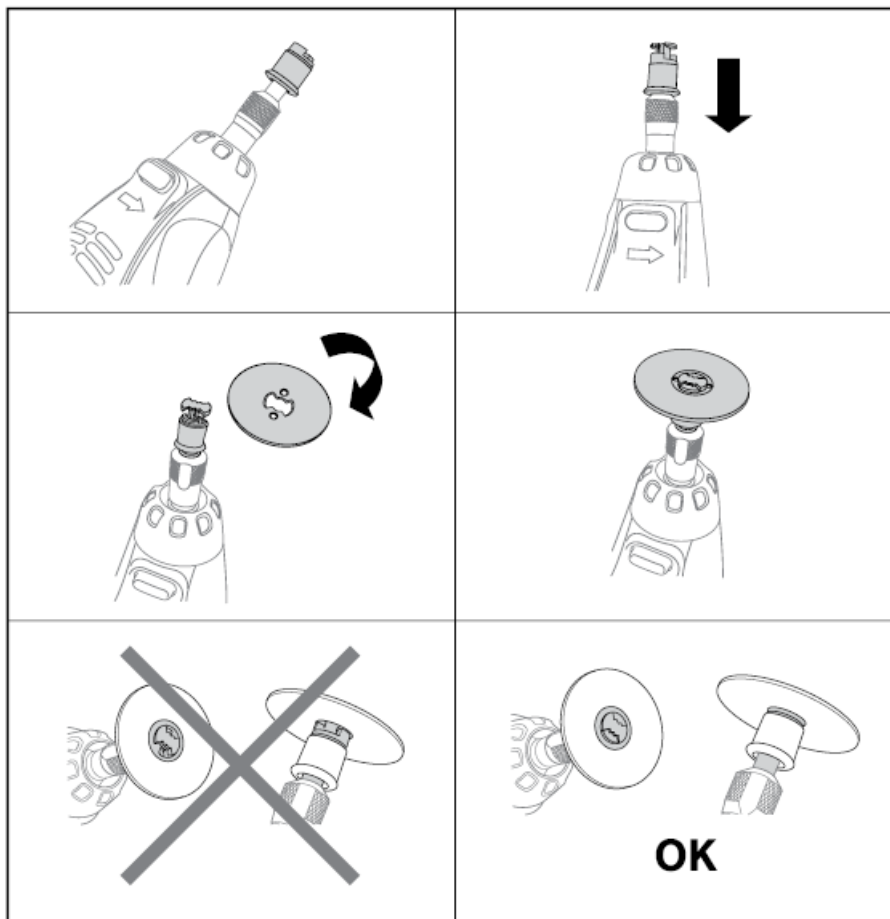
ACCESSORIES







Assembly



WARNING

- electric shock, fire and/or serious injury. tool. areas invite accidents. atmospheres, such as in the presence of flammable which may ignite the dust or fumes.
- Distractions can cause you to lose control.
- Unmodified plugs and matching outlets will reduce risk of electric shock.
- shock if your body is earthed or grounded.
- the risk of electric shock.
- result in serious personal injury. personal injuries.
- Carrying power tools with your finger on the on invites accidents. in personal injury.
- tool in unexpected situations.
- Loose clothes, jewellery or long hair can be caught in moving parts.
- can reduce dust-related hazards. do the job better and safer at the rate for which it was designed. repaired.
- the risk of starting the power tool accidentally. users. maintained power tools.
- less likely to bind and are easier to control. hazardous situation.
- Have your power tool serviced by a qualified repair maintained.

Specifications

- the influence of drugs, alcohol or medication. and specifications provided with this power tool. in electric shock, fire and/or serious injury.
- Do not use accessories that are not specifically operated. than their rated speed can break and fly apart. be adequately controlled. another accessory must properly fit the spindle or of control.
- If the mandrel is insufficiently held and/or the overhang of the wheel is too long, the mounted wheel may become loose and be ejected at high velocity.
- accessories will normally break apart during this test time. stopping flying debris generated by various operations. filtrating particles generated by your operation. hearing loss. workpiece or of a broken accessory may fly away and cause injury beyond immediate area of operation. and could give the operator an electric shock. Always hold the tool firmly in your hand(s) during
- acceleration to full speed, can cause the tool to twist. hand(s) to control the tool. Round material such as

- while being cut, and may cause the bit to bind or jump toward you. accessory. tool out of your control.
- adjustment devices can unexpectedly shift, causing violently thrown. your body. electrical hazards.
- Do not operate the power tool near flammable

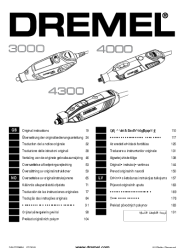
Maintain a firm grip on the power tool and position

- proper precautions are taken.
- loss of control or kickback.
- create frequent kickback and loss of control.
- work and pull the tool in the direction of this feed.
- When using rotary files, cut-off wheels, high-speed kickback.
- When a cut-off wheel grabs, the wheel itself usually breaks. When a rotary file, high-speed cutter or tungsten carbide cutter grabs, it may jump from the groove and you could lose control of the tool.
- these wheels may cause them to shatter. shoulder flange that are of correct size and length. Proper mandrels will reduce the possibility of breakage. wheel breakage. tool directly at you. cause of wheel pinching or snagging. workpiece.
- Large workpieces tend to sag under their own weight. sides of the wheel. objects that can cause kickback. and/or skin. run-in time. these brushes and may become imbedded in your skin.
- In order to use the light for the first time, you will have to Accepts accessories with 0.8 – 3.2 mm shank.
- To loosen, first press shaft lock button and rotate the shaft fits between the jaws. Insert the new accessory into the If you find the accessory slipping in the chuck, use the To reset the jaws, apply the following procedure: Push the end of the chuck firmly against a hard flat can be damaged during handling and can fly apart as pencil between your thumb and forefinger. Aa The “golf” grip method is used for heavier operations such .

The tool is switched “ON” by the slide switch located on

- TO TURN THE TOOL “ON”, slide the switch button forward. TO TURN THE TOOL “OFF”, slide the switch button backward.
- attachments for expanding its functionality
- Flexible shaft *) for precise, detailed work or hard.
- Wall & floor grout removal kit for removing grout from between wall and floor tiles
- Refer to the chart on pages 17-18 to help determine the
- The first step in using the multitool is to get the “feel” of it.
- **IMPORTANT!**
Practice on scrap material first to see how Some guidelines regarding tool speed Polishing, buffing and cleaning with a wire brush must
- type of cutting being done. Use paraffin (not water) when it is not performing properly. Try a different accessory or speed setting to achieve the desired result.
- Sound pressure level (standard deviation 3dB) dB(A) 78.0 89.0
- replace the carbon brush by a new one: tool (there is only one way the brush will fit back into brushes for better performance of the tool.
- may be used for comparing one tool with another. It may also be used in a preliminary assessment of exposure.
- ammonia and household detergents that contain ammonia.
- statutory/country-specific regulations; damage due to

Documents / Resources



[DREMEL 4000 Variable Speed Rotary Tool Kit](#) [pdf] Instruction Manual
4000 Variable Speed Rotary Tool Kit, 4000, Variable Speed Rotary Tool Kit

References

- [Dremel Tools - Rotary, Saws, Oscillating and more | Dremel](#)

[Manuals+](#),

- [home](#)
- [privacy](#)