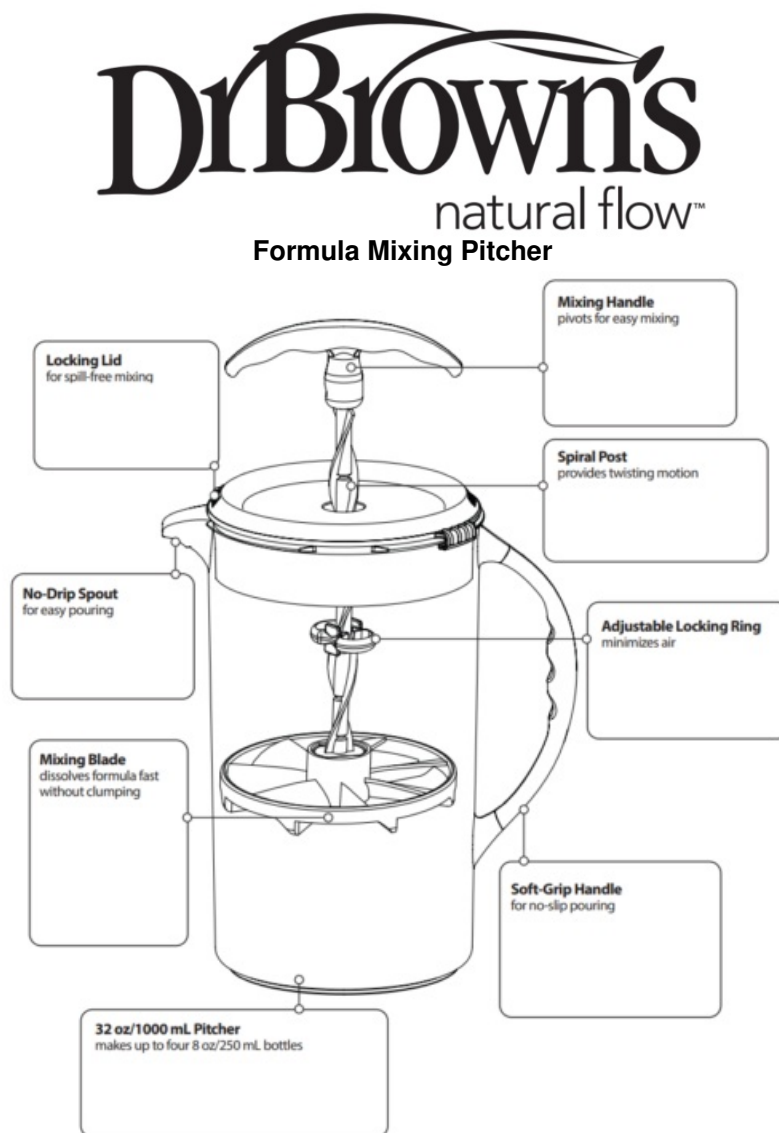




## DrBrown's BFW009 Formula Mixing Pitcher Instruction Manual

[Home](#) » [DrBrown's](#) » DrBrown's BFW009 Formula Mixing Pitcher Instruction Manual 



## Contents

- [1 Dr. Brown's™ Formula Mixing Pitcher](#)
- [2 Cleaning](#)
- [3 Assembly](#)
- [4 Mixing Instructions](#)
- [5 Documents / Resources](#)
  - [5.1 References](#)
- [6 Related Posts](#)

## Dr. Brown's™ Formula Mixing Pitcher

The Dr. Brown's™ Formula Mixing Pitcher is designed to mix formula quickly without any clumping or adding excess air into the formula. Air is often added to formula during mixing, usually by shaking. Use of the Formula Mixing Pitcher helps minimize the air for the best results with your Dr. Brown's® baby bottles.

- Unique mixing blade design helps formula dissolve quickly without clumping.
- Mixing blade remains below the surface to minimize air in the formula.
- Allows preparation of up to four 8 oz/250 mL bottles of formula at a time.
- Dishwasher safe and easy to assemble.

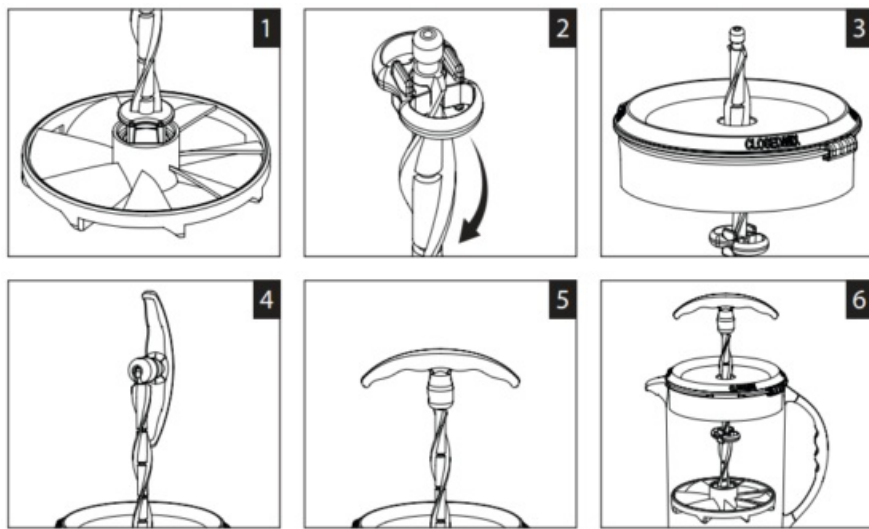
### Cleaning

1. Always wash all parts prior to use.
2. Disassemble the Formula Mixing Pitcher.
3. The pitcher vessel is safe for use in the dishwasher (top rack only), electric and microwave sterilizers, or boiling water. The remaining parts are dishwasher safe (top rack only).

### Assembly

After cleaning, assemble the Formula Mixing Pitcher for use.

1. Attach the mixing blade to the bottom of the spiral post. This snaps on. (Fig.1)
2. Attach the locking ring by placing it on the top end of the spiral post and twisting it down into position. (Fig. 2)
3. Insert the top end of the spiral post through the inside of the locking lid. (Fig. 3)
4. Insert the top of the post into the slot on the mixing handle. (Fig. 4)
5. Rotate the handle into normal position. (Fig. 5)
6. Affix the locking lid with mixing blade to the pitcher. (Fig. 6)



## Mixing Instructions

1. Remove the locking lid with mixing blade.
2. Always follow the formula manufacturer's instructions for mixing water and formula.
3. Slide the locking ring on the spiral post until it locks at the desired notch on the spiral post. Be sure to select a notch that keeps the mixing blade below the surface of the liquid at all times.

**Note:** Selecting the correct notch is important to ensure the mixing blade remains below the surface of the liquid to prevent introducing excess air.

4. Affix locking lid to the pitcher. The lid has Open and Closed/Mix positions. It should be in the Closed/Mix position for formula preparation.
5. Begin mixing by pumping up and down on the mixing handle with smooth strokes, (slowly and with gentle up/down force) about one second per up and down stroke. Mixing should take less than one minute. Allow mixture to stand for one minute to allow surface bubbles to dissipate.
6. Rotate lid to Open position and pour the formula into Dr. Brown's® baby bottles for feeding or storage.

**BFW009\_F4©2024 Dr. Brown's Company.  
All Rights Reserved.**

## Documents / Resources

	<p><a href="#">DrBrowns BFW009 Formula Mixing Pitcher</a> [pdf] Instruction Manual            BFW009 Formula Mixing Pitcher, BFW009, Formula Mixing Pitcher, Mixing Pitcher, Pitcher</p>
--	--

## References

- [User Manual](#)

This website is an independent publication and is neither affiliated with nor endorsed by any of the trademark owners. The "Bluetooth®" word mark and logos are registered trademarks owned by Bluetooth SIG, Inc. The "Wi-Fi®" word mark and logos are registered trademarks owned by the Wi-Fi Alliance. Any use of these marks on this website does not imply any affiliation with or endorsement.