

Draytek VigorAP 962C Ceiling Mount Access Point



Draytek VigorAP 962C Ceiling Mount Access Point User Guide

[Home](#) » [DrayTek](#) » Draytek VigorAP 962C Ceiling Mount Access Point User Guide 

Contents

- [1 Draytek VigorAP 962C Ceiling Mount Access Point](#)
- [2 Intellectual Property Rights \(IPR\) Information](#)
- [3 Installation](#)
- [4 Connection and Configuration](#)
- [5 Web Configurations](#)
- [6 Documents / Resources](#)
 - [6.1 References](#)
- [7 Related Posts](#)

DrayTek

Draytek VigorAP 962C Ceiling Mount Access Point



Intellectual Property Rights (IPR) Information

Copyrights

© All rights reserved. This publication contains information that is protected by copyright. No part may be reproduced, transmitted, transcribed, stored in a retrieval system, or translated into any language without written permission from the copyright holders.

Trademarks The following trademarks are used in this document:

- Microsoft is a registered trademark of Microsoft Corp.
- Windows, Windows 8, 10, 11 and Explorer are trademarks of Microsoft Corp.
- Apple and Mac OS are registered trademarks of Apple Inc.
- Other products may be trademarks or registered trademarks of their respective manufacturers.

Safety Instructions and Approval

Safety Instructions

- Read the installation guide thoroughly before you set up the device.
- The device is a complicated electronic unit that may be repaired only by authorized and qualified personnel. Do not try to open or repair the device yourself.
- Do not place the device in a damp or humid place, e.g. a bathroom.
- Do not stack the devices.
- The device should be used in a sheltered area, within a temperature range of 0 to +40 Celsius.
- Do not expose the device to direct sunlight or other heat sources. The housing and electronic components may be damaged by direct sunlight or heat sources.
- Do not deploy the cable for LAN connection outdoor to prevent electronic shock hazards.
- Do not power off the device when saving configurations or firmware upgrades. It may damage the data in a flash. Please disconnect the Internet connection on the device before powering it off when a TR-069/ ACS server manages the device.
- Keep the package out of reach of children.
- When you want to dispose of the device, please follow local regulations on conservation of the environment.

Warranty

We warrant to the original end user (purchaser) that the device will be free from any defects in workmanship or materials for a period of two (2) years from the date of purchase from the dealer. Please keep your purchase receipt in a safe place as it serves as proof of date of purchase. During the warranty period, and upon proof of purchase, should the product have indications of failure due to faulty workmanship and/or materials, we will, at our discretion, repair or replace the defective products or components, without charge for either parts or labor, to whatever extent we deem necessary to restore the product to proper operating condition. Any replacement will consist of a new or re-manufactured functionally equivalent product of equal value, and will be offered solely at our discretion. This warranty will not apply if the product is modified, misused, tampered with, damaged by an act of God, or subjected to abnormal working conditions. The warranty does not cover the bundled or licensed software of other vendors. Defects which do not significantly affect the usability of the product will not be covered by the warranty. We reserve the right to revise the manual and online documentation and to make changes from time to time in the contents hereof without obligation to notify any person of such revision or changes.

Regulatory Information

Federal Communication Commission Interference Statement

This equipment has been tested and found to comply with the limits for a Class B digital device, pursuant to Part 15 of the FCC Rules. These limits are designed to provide reasonable protection against harmful interference in a residential installation. This equipment generates, uses and can radiate radio frequency energy and, if not installed and used in accordance with the instructions, may cause harmful interference to radio communications. However,

there is no guarantee that interference will not occur in a particular installation. If this equipment does cause harmful interference to radio or television reception, which can be determined by turning the equipment off and on, the user is encouraged to try to correct the interference by one of the following measures:

- Reorient or relocate the receiving antenna.
- Increase the separation between the equipment and receiver.
- Connect the equipment into an outlet on a circuit different from that to which the receiver is connected.
- Consult the dealer or an experienced radio/TV technician for help.

This device complies with Part 15 of the FCC Rules. Operation is subject to the following two conditions:

1. This device may not cause harmful interference, and
2. This device may accept any interference received, including interference that may cause undesired operation.

Caution

- Any changes or modifications not expressly approved by the grantee of this device could void the user's authority to operate the equipment. Any changes or modifications not expressly approved by the party responsible for compliance could void the user's authority to operate this equipment. This transmitter must not be co-located or operating in conjunction with any other antenna or transmitter.

Radiation Exposure Statement:

This device complies with FCC radiation exposure limits set forth for an uncontrolled environment and it also complies with Part 15 of the FCC RF Rules. This equipment must be installed and operated in accordance with provided instructions and the antenna(s) used for this transmitter must be installed to provide a separation distance of at least 22 cm from all persons and must not be co-located or operating in conjunction with any other antenna or transmitter. End-users and installers must be provided with antenna installation instructions and consider removing the no-collocation statement.

External Power Supply ErP Information

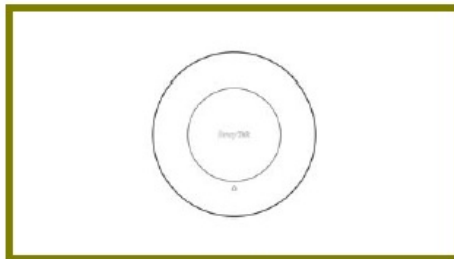
		1	2	3	4	5
A	Manufacturer	DVE	DVE	AMIGO	AMIGO	TOPOW Electronics Co.
B	Address	No.5, Pao-Kao Road, Hsin-Tien, New Taipei City 231, Taiwan	No.5, Pao-Kao Road, Hsin-Tien, New Taipei City 231, Taiwan	No.20, Qianyang First Road, Yun-Mao-Tsun, San Xing, Zhongshan, Guangdong, China	No.20, Qianyang First Road, Yun-Mao-Tsun, San Xing, Zhongshan, Guangdong, China	No.8 Xinxing Industrial Park, Xinhue Village, Fuyong Street, Baoan District, Shenzhen, Guangdong, China

C	Model identifier	DSA-12PF09-12 FUK	DSA-18PFR-12 FUK	AMS159A-120100 0FB	AMS2000-120200 0FV	TPA259-18120-E U-22086
		DSA-12PF09-12 FEU	DSA-18PFR-12 FEU		AMS2000-120200 0FB	TPA259-18120-U K-23091
		DSA-12PF11-12 FEU				
D	Input voltage	100~240V	100~240V	100~240V	100~240V	100~240V
E	Input AC frequency	50/60Hz	50/60Hz	50/60Hz	50/60Hz	50/60Hz
	Output voltage DC	12.0V	12.0V	12.0V	12.0V	12.0V
F	Output current	1.0A	1.5A	1.0A	2.0A	1.5A
G	Output power	12.0W	18.0W	12.0W	24.0W	18.0W
H	Average active efficiency	84%	85.5%	86.96%	86.2%	85.21%
I	Efficiency at low load 10%	79.3%	83.7%	77.5%	79.1%	80.1%
J	No-load power consumption	0.06W	0.07W	0.10W	0.10W	0.1W

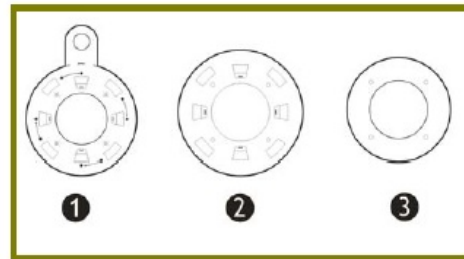
The external power supply used for each product will be model dependent. For more update, please visit www.draytek.com.

Package Content

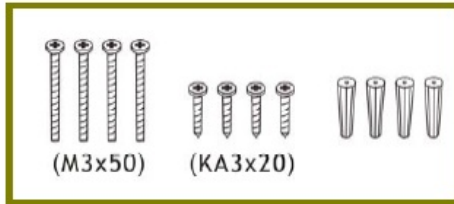
Take a look at the package content. If there is anything missed or damaged, please contact DrayTek or dealer immediately.



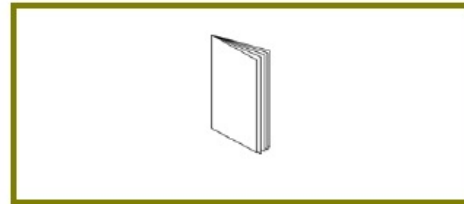
Main Unit



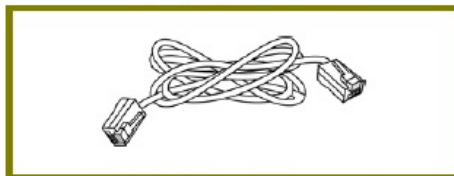
Mount brackets



Fixings and Screws

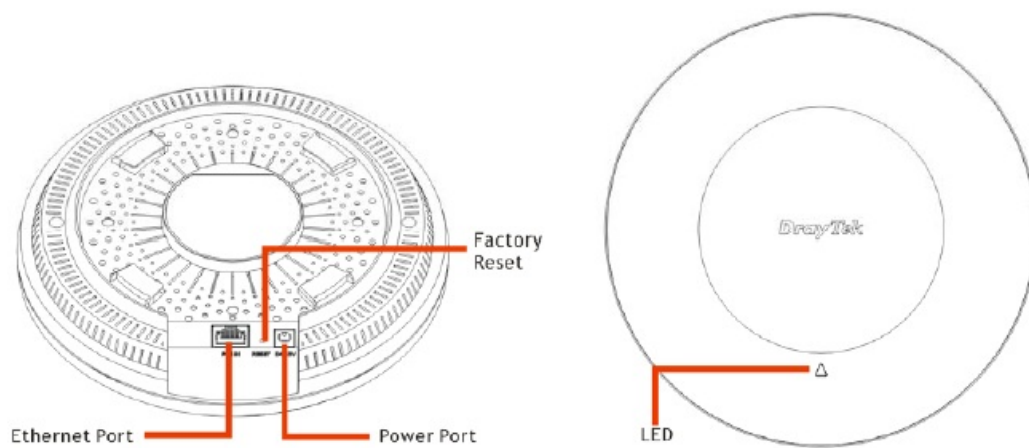


Quick Start Guide



RJ-45 Cable (Ethernet)

Panel Explanation

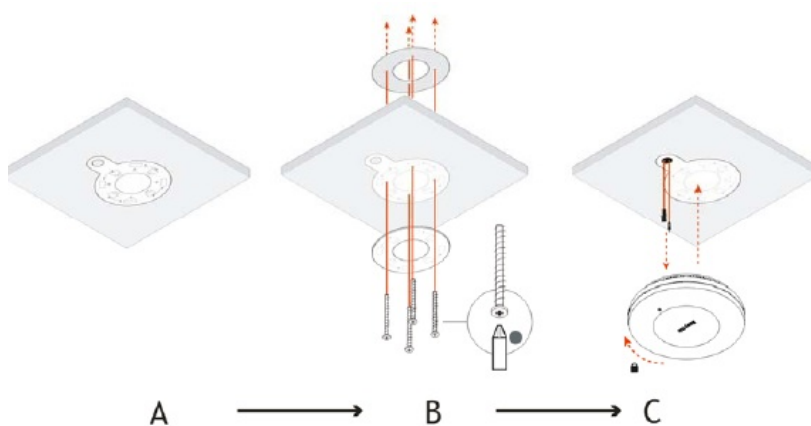


LED	Status	Explanation
Orange LED	On	The system is in boot-loader mode.
	Blinking	The system is in TFTP mode.
Blue LED	Blinking	The system is in AP mode and work normally.
Red LED	Blinking	System error.
Off	Off	VigorAP is turned off or not functioning.
Interface		Explanation
Ethernet Port		Connects to LAN or router. Supports PoE power & Gigabit (2.5G).
Power Jack (DC IN)		Connector for a power adapter.
Hole		Explanation
Factory Reset		Restores the unit back to factory default settings. To use, insert a small item such as an unbent paperclip into the hole. You will feel the button inside depress gently. Hold it for 5 seconds. The VigorAP will restart with the factory default configuration and the LED will blink blue.

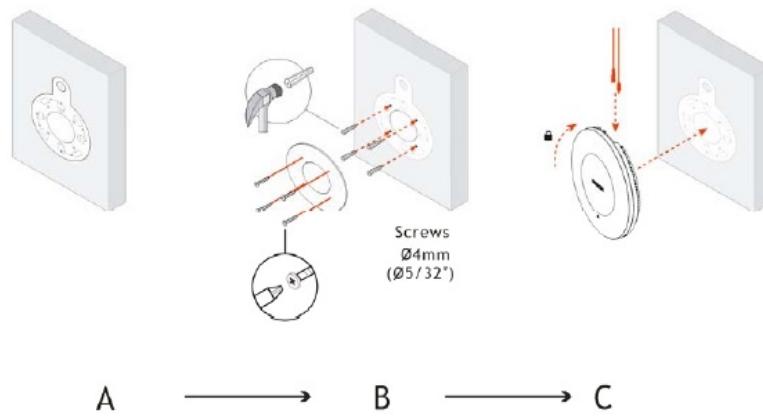
Installation

VigorAP can be installed under certain locations: wooden ceiling, plasterboard ceilings, and wall.

Ceiling-mount Installation (from A to C)



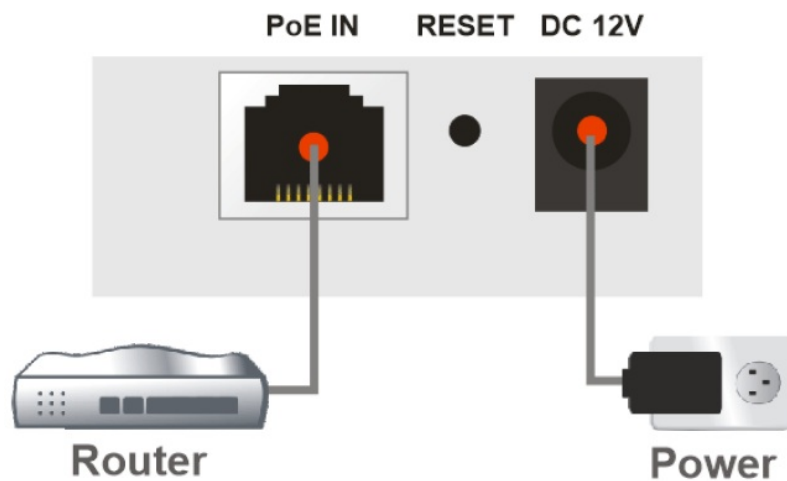
Wall-mount Installation (from A to C)



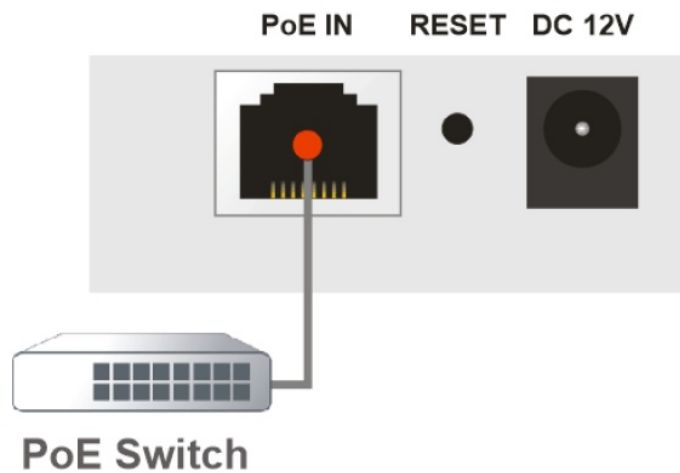
Connection and Configuration

Notifications for Hardware Connection

- Connect VigorAP to Vigor router (via LAN port) with Ethernet cable.



- Connect VigorAP to the PoE switch (via LAN port) with an Ethernet cable for getting the power from the switch directly. While connecting with a PoE switch, the power adapter is not necessary but optional.

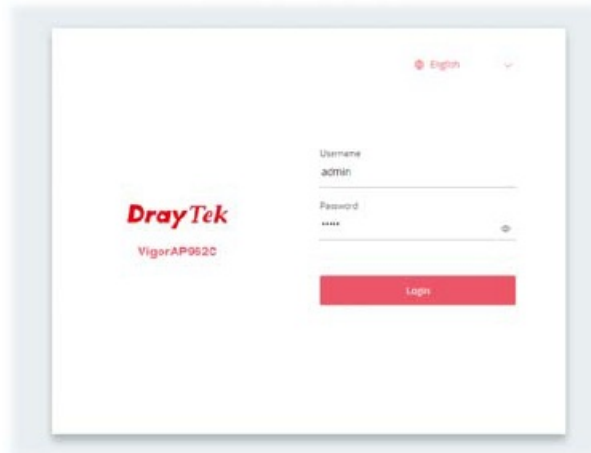


Web Configurations

There are two methods to configure VigorAP.

Method 1:

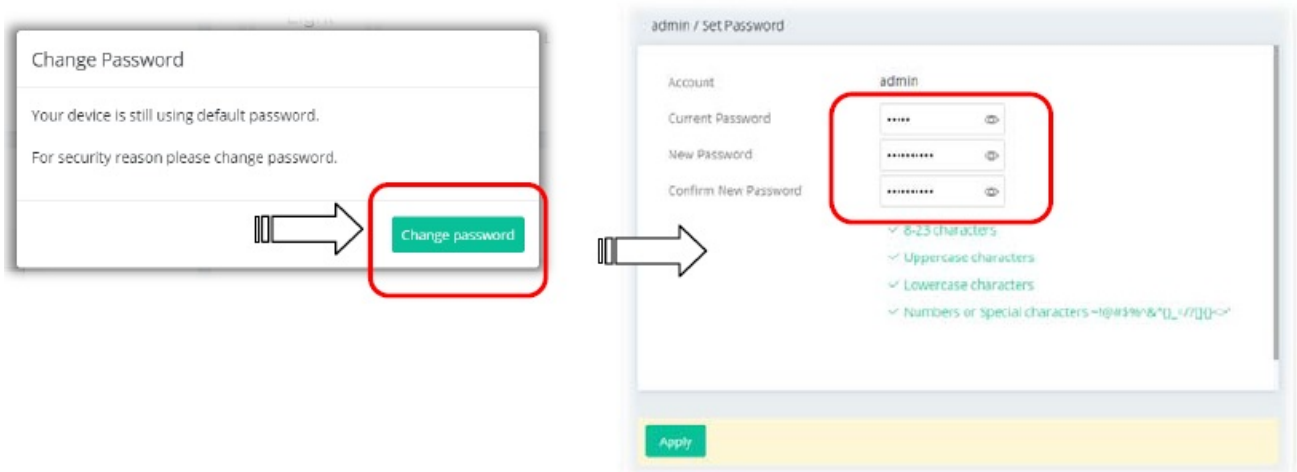
1. Make sure your PC connects to the modem correctly.
2. Open a web browser on your PC and type <http://192.168.1.2>. A pop-up window will open to ask for username and password. Please enter "admin/admin" as the Username/Password and click Login.



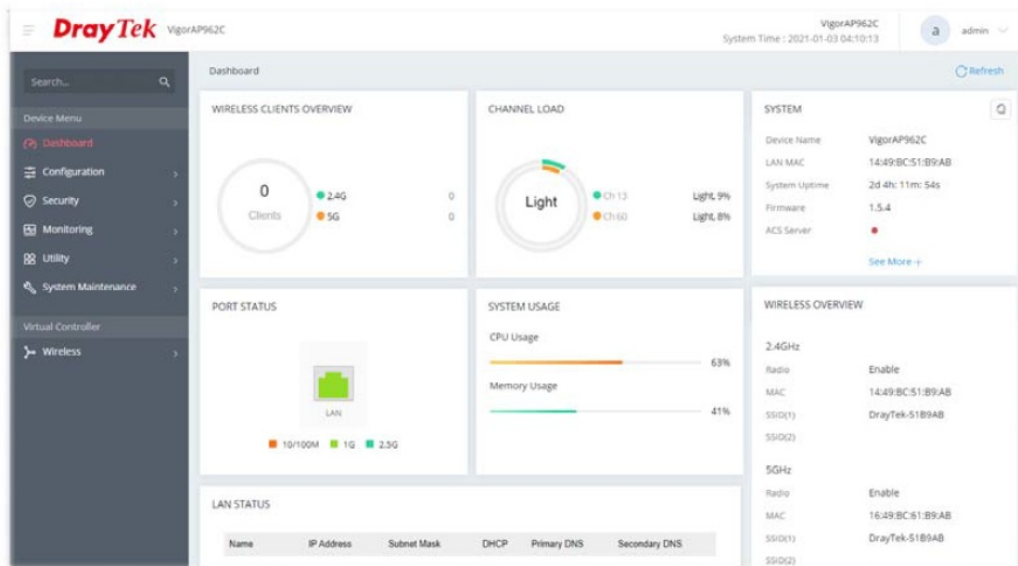
Note: You may either simply set up your computer to get IP dynamically from the router or set up the IP address of the computer to be in the same subnet as the IP address of VigorAP 962C.

- If there is no DHCP server on the network, then VigorAP 962C will have an IP address of 192.168.1.2.
- If there is DHCP available on the network, then VigorAP 962C will receive its IP address via the DHCP server.

3. Next, the page will appear to guide you change the login password. You MUST change the login password before accessing the web user interface. Please set a new password for network security.



4. After clicking Apply, the Main Screen will pop up. When the homepage appears, view the configuration and modify the settings if you want.

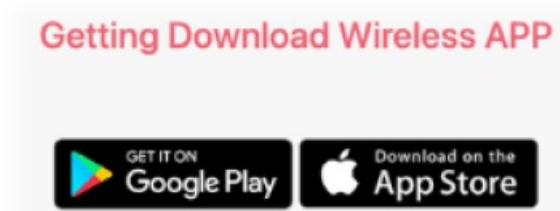


Method 2:

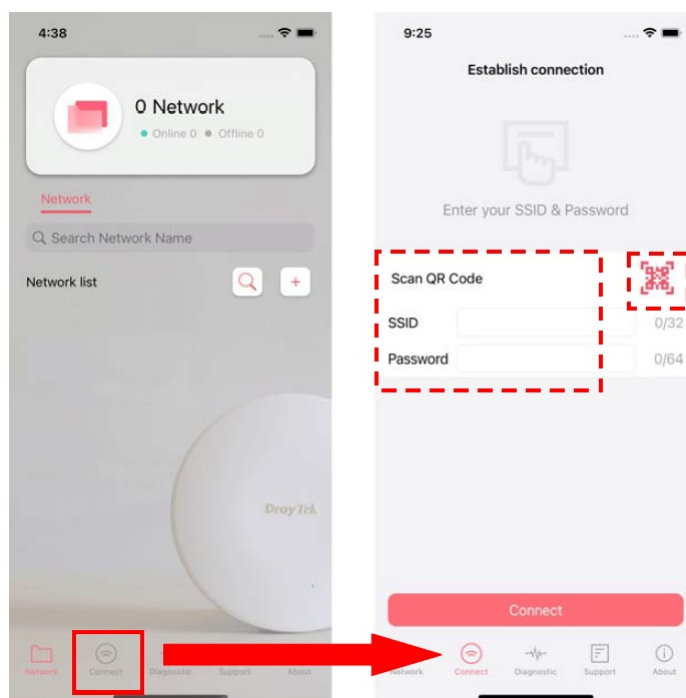
1. Use a mobile phone to scan the QR code named with DrayTek Wireless App to download DrayTek Wireless APP.



2. After opening the DrayTek website, use the scroll bar to locate the Wireless APP.



3. Based on the mobile phone type (Android or iOS) you have, select the one you need to download the APP. Then, run the APP.
4. From the home page, click the Connect icon to access the Connect page. Next, press the QR code icon next to Scan QR Code on your phone screen to open the camera.
Scan the QR code named with Connect SSID to access the web user interface (configuration wizard) of VigorAP 962C. (For iOS users, the SSID and the password will be shown first. Simply click the Connect button to access the web user interface of VigorAP.)



Customer Service

If the device cannot work correctly after trying many efforts, please contact your dealer/DrayTek for further help right away. For any questions, please feel free to send e-mail to "support@draytek.com".

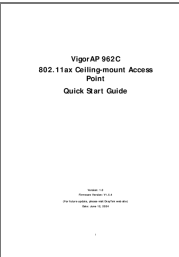
Be a Registered Owner

Web registration is preferred. You can register your Vigor router via <https://myvigor.draytek.com>.

Firmware & Tools Updates

Due to the continuous evolution of DrayTek technology, all routers will be regularly upgraded. Please consult the DrayTek web-site for more information on newest firmware, tools and documents. <https://www.draytek.com>.

Documents / Resources

	<p>Draytek VigorAP 962C Ceiling Mount Access Point [pdf] User Guide VGYP962C, ap962c, VigorAP 962C Ceiling Mount Access Point, VigorAP 962C, Ceiling Mount Access Point, Mount Access Point, Access Point, Point</p>
---	---

References

- [Home | DrayTek](#)
- [GNU General Public License v2.0 - GNU Project - Free Software Foundation](#)
- [MyVigor - DrayTek](#)
- [Home | DrayTek](#)
- [User Manual](#)

[Manuals+](#), [Privacy Policy](#)

This website is an independent publication and is neither affiliated with nor endorsed by any of the trademark owners. The "Bluetooth®" word mark and logos are registered trademarks owned by Bluetooth SIG, Inc. The "Wi-Fi®" word mark and logos are registered trademarks owned by the Wi-Fi Alliance. Any use of these marks on this website does not imply any affiliation with or endorsement.