



DrayTek P1282 VigorSwitch Web Smart Managed Switch User Guide

[Home](#) » [DrayTek](#) » DrayTek P1282 VigorSwitch Web Smart Managed Switch User Guide 



VigorSwitch P1282
Web Smart Managed Switch
Quick Start Guide
Version: 1.0
Firmware Version: V2.7.0
(For future updates, please visit the DrayTek website)
Date: April 27, 2022

Contents

- [1 Package Content](#)
- [2 Panel Explanation](#)
- [3 Hardware Installation](#)
 - [3.1 3.1 Network Connection](#)
 - [3.2 3.2 Rack-Mounted Installation](#)
- [4 Software Configuration](#)
 - [4.1 Regulatory Information](#)
- [5 Documents / Resources](#)
 - [5.1 References](#)
- [6 Related Posts](#)

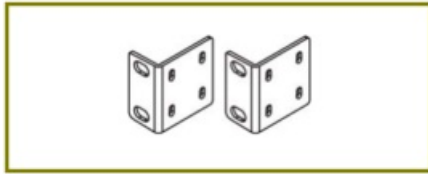
Package Content



VigorSwitch P1282 (with PoE)



Quick Start Guide

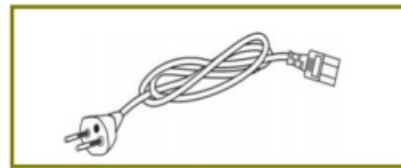


Rack Mount Kit (brackets)

The type of the power cord depends on the country in which the switch will be installed.



UK-type Power Cord



EU-type Power Cord



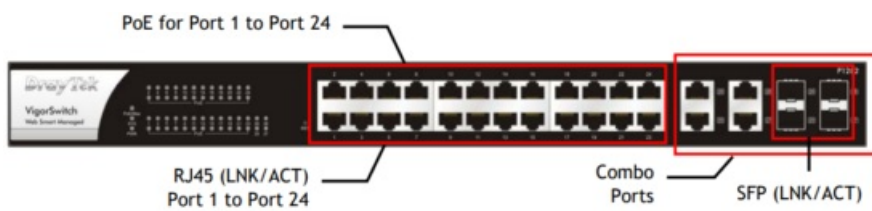
USA/Taiwan-type Power Cord




AU/NZ-type Power Cord

If any of these items are found missing or damaged, please contact your local supplier for replacement.

Panel Explanation



LED	Status	
PoE/Max	On (Green)	Connected over the
	Off	Connected within the
SYS	On (Green)	The switch finishes
	Blinking (Green)	The switch is power
	Off	The power is off or
PWR	On (Green)	The device is power
	Off	The device is not re
PoE 1~24	On (Green)	The port is supplied
	Off	No PoE power is su
RJ45 (LNK/ACT) Port 1 ~ 24	On (Green)	The device is conn
	Blinking	The system is send
	Off	The port is disconn
Combo Ports 25 ~ 28 RJ45 / SFP (LNK/ACT)	On (Green)	The device is conn
	On (Amber)	The device is conn
	Blinking	The system is send
	Off	The port is disconn

Interface	Description
RJ 45 LNK/ACT Port 1 ~ 24	Port 1 to Port 24 can be used for an Ethernet connection and PoE connection.
PoE for Port 1 ~ 24	
SFP LNK/ACT Port 25 ~ 28	Port 25 to Port 28 are used for fiber connection.
	Power inlet for AC input (100~240V/AC, 50/60Hz).

Note

The following limitation is suitable for VigorSwitch P1282
Power Output —

- IEEE 802.3af Max. 15.4W Output Supported
- IEEE 802.3at Max. 30W Output Supported

PoE Power Budget —

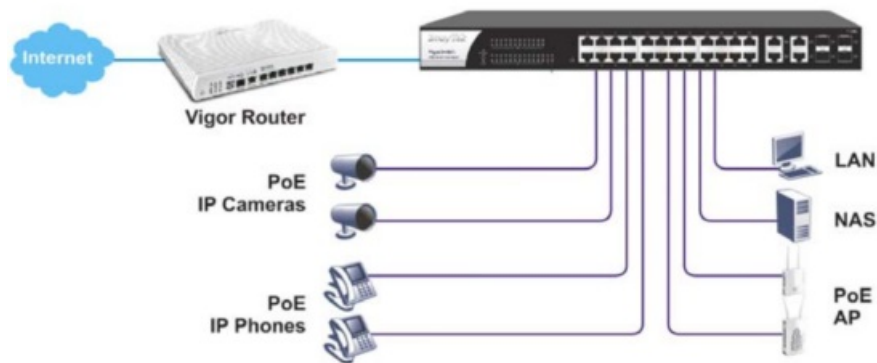
- 400 Watts (Max)

Hardware Installation

Before starting to configure the switch, you have to connect your devices correctly. Here, we take VigorSwitch P1282 as an example.

3.1 Network Connection

- Use a Cat. 5e twisted-pair cable to connect a PoE device to the port (1~24) of this switch.
- The switch will supply power to PoE Device over the twisted-pair cable.
- Please note that Power Device must comply with IEEE 802.3af/at.
- Other PCs, servers, and network devices can be connected to the switch using a standard 'straight through' twisted pair cable.



3.2 Rack-Mounted Installation

The switch can be installed easily by using a **rack mount kit**.

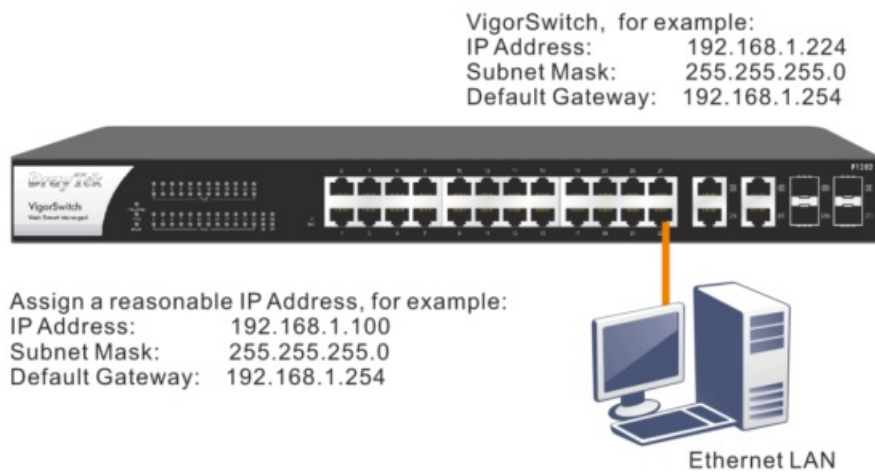
1. Fasten the rack mount kit on both sides of the VigorSwitch using specific screws.



2. Then, install the VigorSwitch (with rack mount kit) on the 19-inch chassis by using the other four screws.



Software Configuration



Before using the switch, perform the following steps:

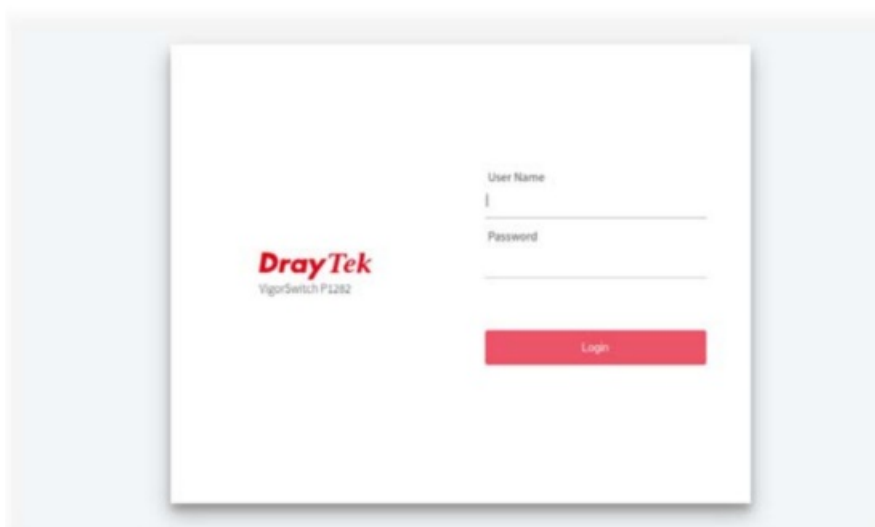
1. Set up a physical path between the configured switch and a PC by a qualified UTP Cat. 5e cable with RJ-45 connector.

If a PC directly connects to the switch, you have to set up the same subnet mask for the PC and the switch.

Default values of the managed switch are listed as follows:

IP Address	192.168.1.224
Subnet Mask	255.255.255.0
DHCP Client	Enabled (On)
Username	admin
Password	admin

2. After configuring the correct IP address on your PC, open your web browser and access the switch's IP address.



The home page of VigorSwitch will be shown as below:



Customer Service

If the switch cannot work correctly after trying many efforts, please contact your dealer for further help right away. For any questions, please feel free to send an e-mail to support@draytek.com.

Be a Registered Owner

Web registration is preferred. You can register your Vigor router via <https://myvigor.draytek.com>.

Firmware & Tools Updates

Due to the continuous evolution of DrayTek technology, all switches will be regularly upgraded. Please consult the DrayTek website for more information on the newest firmware, tools, and documents. <https://www.draytek.com>

GPL Notice

This DrayTek product uses software of the GNU GENERAL PUBLIC LICENSE. DrayTek does not provide any warranty. A Limited warranty is offered on DrayTek products. This notice applies to applications or programs. To do more, please visit [draytek.com](https://www.draytek.com).
GNU GENERAL PUBLIC LICENSE
<https://gnu.org/licenses/gpl-3.0-standalone.html>
Version 3, June 2007
For any questions, please feel free to contact support@draytek.com for further information.



EU Declaration of Conformity

We DrayTek Corp., office at No.26, Fushing Rd., Hukou, Hsinchu Industrial Park, Hsinchu 303, Taiwan, R.O.C., declare under our sole responsibility that the product

- **Product name:** PoE 24+4 Gigabit Combo Switch
- **Model number:** VigorSwitch P1282
- **Manufacturer:** DrayTek Corp.

- **Address: No.26, Fushing Rd., Hukou, Hsinchu Industrial Park, Hsinchu 303, Taiwan**

is in conformity with the relevant Union harmonization legislation:

EMC Directive 2014/30/EU, Low Voltage Directive 2014/35/EU, and RoHS 2011/65/EU with reference to the following standards

Standard	Version / Issue date
EN 55032	2015+A11:2020 class A
EN 61000-3-2	2019
EN 61000-3-3	2013+A1:2019
EN 55035	2017+A11:2020
EN 62368-1	2014+A11:2017
EN IEC 63000:2018	2018

Hsinchu (place)	June 16, 2021 (date)
---------------------------	--------------------------------



Declaration of Conformity

We DrayTek Corp., office at No.26, Fushing Rd., Hukou, Hsinchu Industrial Park, Hsinchu 303, Taiwan, R.O.C., declare under our sole responsibility that the product

- **Product name: PoE 24+4 Gigabit Combo Switch**
- **Model number: VigorSwitch P1282**
- **Manufacturer: DrayTek Corp.**
- **Address: No.26, Fushing Rd., Hukou, Hsinchu Industrial Park, Hsinchu 303, Taiwan**
- **Importer: SEG, 11 Capital Business Park, Borehamwood, Herts, WD6 1GW**

is in conformity with the relevant UK Statutory Instruments:

The Electromagnetic Compatibility Regulations 2016 (SI 2016 No.1091), The Electrical Equipment (Safety) Regulations 2016 (SI 2016 No.1101), and The Restriction of the Use of Certain Hazardous Substances in Electrical and Electronic Equipment Regulations 2012 (SI 2012 No. 3032) with reference to the following standards:

Standard	Version / Issue date
EN 55032	2015+A11:2020 class A
EN 61000-3-2	2019
EN 61000-3-3	2013+A1:2019
EN 55035	2017+A11:2020
EN 62368-1	2014+A11:2017
EN IEC 63000:2018	2018

Hsinchu (place)	June 16, 2021 (date)
---------------------------	--------------------------------

Copyrights	© All rights reserved. This publication contains information that is protected by copyright. No part may , or translated into any language without written permission from the copyright holders.
Trademarks	<p>The following trademarks are used in this document:</p> <ul style="list-style-type: none"> • Microsoft is a registered trademark of Microsoft Corp. • Windows, 8, 10, and Explorer are trademarks of Microsoft Corp. • Apple and Mac OS have registered trademarks of Apple Inc. • Other products may be trademarks or registered trademarks of their respective manufacturers.

Safety Instructions	<ul style="list-style-type: none"> • Read the installation guide thoroughly before you set up the switch. • The switch is a complicated electronic unit that may be repaired only by authorized and qualified personnel. • Do not place the switch in a damp or humid place, e.g. a bathroom. • Do not stack the switches. • The switch should be used in a sheltered area, within a temperature range of +5 to +40 Celsius. • Do not expose the switch to direct sunlight or other heat sources. The housing and electronic components should be protected from moisture. • Do not deploy the cable for LAN connection outdoor to prevent electronic shock hazards. • Keep the package out of reach of children. • When you want to dispose of the switch, please follow local regulations on the conservation of the environment.
Warranty	<p>We warrant to the original end-user (purchaser) that the switch will be free from any defects in workmanship or materials for a period of 24 months from the date of purchase.</p> <p>Please keep your purchase receipt in a safe place as it serves as proof of date of purchase. During the warranty period, if you have indications of failure due to faulty workmanship and/or materials, we will, at our discretion, repair or replace the product, either parts or labor, to whatever extent we deem necessary to restore the product to proper operating condition. The warranty does not cover the product if it has been tampered with, damaged by an act of God, or subjected to abnormal working conditions. The warranty is void if the product is used for any purpose other than that intended by the manufacturer. Defects that do not significantly affect the usability of the product will not be covered by the warranty. The warranty is subject to change without notice and to make changes from time to time in the contents hereof without obligation to notify any person concerned.</p>

Regulatory Information

Federal Communication Commission Interference Statement

This equipment has been tested and found to comply with the limits for a Class A digital device, pursuant to Part 15 of the FCC Rules. These limits are designed to provide reasonable protection against harmful interference in a residential installation. This equipment generates, uses, and can radiate radio frequency energy and, if not installed and used in accordance with the instructions, may cause harmful interference to radio communications. However, there is no guarantee that interference will not occur in a particular installation. If this equipment does cause harmful interference to radio or television reception, which can be determined by turning the equipment off and on, the user is encouraged to try to correct the interference by one of the following measures:



- Reorient or relocate the receiving antenna.
- Increase the separation between the equipment and receiver.
- Connect the equipment into an outlet on a circuit different from that to which the receiver is connected.
- Consult the dealer or an experienced radio/TV technician for help.

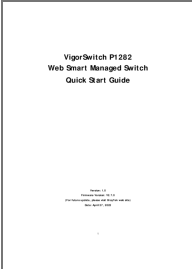

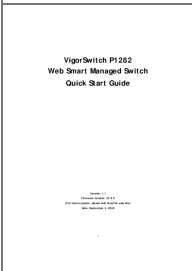
This device complies with Part 15 of the FCC Rules. Operation is subject to the following two conditions:

1. This device may not cause harmful interference, and
2. This device may accept any interference received, including interference that may cause undesired operation.

USA Local Representative	Company name	ABP International Inc.		
	Address	13988 Diplomat Drive Suite 180 Dallas TX 75234		
	ZIP Code	75234	E-mail	rmesser@abptech.com
	Contact Person	Mr. Robert Messer	Tel.	19728311600

Caution: Any changes or modifications not expressly approved by the party responsible for compliance could void the user's authority to operate the equipment. For more updates, please visit www.draytek.com.

Documents / Resources

	<p>DrayTek P1282 VigorSwitch Web Smart Managed Switch [pdf] User Guide P1282, VigorSwitch Web Smart Managed Switch, P1282 VigorSwitch Web Smart Managed Switch</p>
	<p>DrayTek P1282 VigorSwitch Web Smart Managed Switch [pdf] User Guide P1282, G1282, VigorSwitch Web Smart Managed Switch, Smart Managed Switch, Managed Switch</p>
	<p>DrayTek P1282 VigorSwitch Web Smart Managed Switch [pdf] User Guide P1282 VigorSwitch Web Smart Managed Switch, P1282, VigorSwitch Web Smart Managed Switch, Smart Managed Switch, Managed Switch</p>

References

-  [DrayTek File Server](#)
-  [Home | DrayTek](#)
-  [GNU General Public License v2.0 - GNU Project - Free Software Foundation](#)
-  [MyVigor - DrayTek](#)
-  [Home | DrayTek](#)