

**DrayTek**  
**35b Security**  
**Firewall**



## DrayTek 35b Security Firewall User Guide

[Home](#) » [DrayTek](#) » DrayTek 35b Security Firewall User Guide 

### Contents

- [1 DrayTek 35b Security Firewall](#)
- [2 Product Information](#)
- [3 Product Usage Instructions](#)
- [4 Declaration of Conformity](#)
- [5 Regulatory Information](#)
- [6 Package Content](#)
- [7 Panel Explanation](#)
- [8 Hardware Installation](#)
- [9 Software Configuration](#)
- [10 Customer Service](#)
- [11 Documents / Resources](#)
  - [11.1 References](#)

**DrayTek**

### DrayTek 35b Security Firewall



### Product Information

## Specifications:

- Product Name: VDSL2 Security Firewall Vigor2865
- Model Number: Vigor2865
- Manufacturer: DrayTek Corp.
- Address: No.26, Fushing Rd., Hukou, Hsinchu Industrial Park, Hsinchu 303, Taiwan

## Product Usage Instructions

### Safety Instructions:

Read the installation guide thoroughly before setting up the router. The router is a complicated electronic unit that should only be repaired by authorized personnel.

### Declaration of Conformity:

The equipment type Vigor2865 complies with The Electromagnetic Compatibility Regulations 2016, The Electrical Equipment (Safety) Regulations 2016, and The Restriction of the Use of Certain Hazardous Substances in Electrical and Electronic Equipment Regulations 2012.

## FAQ (Frequently Asked Questions):

- Q: Where can I find the full text of the UKCA Declaration of Conformity?  
A: The full text of the UKCA Declaration of Conformity is available at the following internet address: [UKCA Declaration of Conformity](#).
- Q: What is the support period for the product security regulations in the UK?  
A: The Product Security and Telecommunications Infrastructure Regulations Support Period is 5 years after the End of Life (EOL) notification as per Version 2023 Schedule 1.
- Q: How long is the Statement of Compliance retained by DrayTek?  
A: The Statement of Compliance is retained by DrayTek for 10 years after the date of issue.

## Intellectual Property Rights (IPR) Information

- Copyrights
  - © All rights reserved. This publication contains information that is protected by copyright. No part may be reproduced, transmitted, transcribed, stored in a retrieval system, or translated into any language without written permission from the copyright holders.
- Trademarks

The following trademarks are used in this document:

  - Microsoft is a registered trademark of Microsoft Corp.
  - Windows 8,10, 11 and Explorer are trademarks of Microsoft Corp.
  - Apple and Mac OS are registered trademarks of Apple Inc.
  - Other products may be trademarks or registered trademarks of their respective manufacturers.

## Safety Instructions and Approval

- Safety Instructions
  - Read the installation guide thoroughly before you set up the router.

- The router is a complicated electronic unit that may be repaired only by authorized and qualified personnel. Do not try to open or repair the router yourself.
- Do not place the router in a damp or humid place, e.g. a bathroom.
- Do not stack the routers.
- The router should be used in a sheltered area, within a temperature range of +5 to +40 Celsius.
- Do not expose the router to direct sunlight or other heat sources. The housing and electronic components may be damaged by direct sunlight or heat sources.
- Do not deploy the cable for LAN connection outdoor to prevent electronic shock hazards.
- Do not power off the router when saving configurations or firmware upgrades. It may damage the data in a flash. Please disconnect the Internet connection on the router before powering it off when a TR069/ACS server manages the router.
- Keep the package out of reach of children.
- When you want to dispose of the router, please follow local regulations on conservation of the environment.
- **Warranty**
  - We warrant to the original end user (purchaser) that the router will be free from any defects in workmanship or materials for a period of two (2) years from the date of purchase from the dealer. Please keep your purchase receipt in a safe place as it serves as proof of date of purchase. During the warranty period, and upon proof of purchase, should the product have indications of failure due to faulty workmanship and/or materials, we will, at our discretion, repair or replace the defective products or components, without charge for either parts or labor, to whatever extent we deem necessary to restore the product to proper operating condition. Any replacement will consist of a new or re-manufactured functionally equivalent product of equal value, and will be offered solely at our discretion. This warranty will not apply if the product is modified, misused, tampered with, damaged by an act of God, or subjected to abnormal working conditions. The warranty does not cover the bundled or licensed software of other vendors. Defects which do not significantly affect the usability of the product will not be covered by the warranty. We reserve the right to revise the manual and online documentation and to make changes from time to time in the contents hereof without obligation to notify any person of such revision or changes

## **Declaration of Conformity**

Hereby, DrayTek Corporation declares that the equipment type Vigor2865 is in compliance with The Electromagnetic Compatibility Regulations 2016 (SI 2016 No.1091), The Electrical Equipment (Safety) Regulations 2016 (SI 2016 No.1101), and The Restriction of the Use of Certain Hazardous Substances in Electrical and Electronic Equipment Regulations 2012 (SI 2012 No. 3032).

The full text of the UKCA Declaration of Conformity is available at the following internet address:

<https://fw.draytek.com.tw/Vigor2865/Document/CE/>

- Product name: VDSL2 Security Firewall
- Model number: Vigor2865
- Manufacturer: DrayTek Corp.
- Address: No.26, Fushing Rd., Hukou, Hsinchu Industrial Park, Hsinchu 303, Taiwan

## **UK PSTI STATEMENT OF COMPLIANCE**

We, DrayTek Corp., office at No.26, Fushing Rd., Hukou, Hsinchu Industrial Park, Hsinchu 303, Taiwan, declare under our sole responsibility that the product

The full text of the PSTI Declaration of Conformity is available at the following internet address:

<https://fw.draytek.com.tw/UK/PSTI/>

- Product name: 35b Security Router with WLAN/5G-NR/LTE/VoIP
- Model number: Vigor2865LVax-5G, Vigor2865Lax-5G, Vigor2865LV-5G, Vigor2865L-5G, Vigor2865LVac, Vigor2865LVax, Vigor2865LV, Vigor2865Vac, Vigor2865Vax, Vigor2865Lac, Vigor2865Lax, Vigor2865ac, Vigor2865ax, Vigor2865V, Vigor2865L, Vigor2865
- Manufacturer: DrayTek Corp.
- Address: No.26, Fushing Rd., Hukou, Hsinchu Industrial Park, Hsinchu 303, Taiwan

Is in conformity with the relevant UK Statutory Instruments: The Product Security and Telecommunications Infrastructure (Security Requirements for Relevant Connectable Products) Regulations 2023 ("Security Requirements").

Standard	Version
The Product Security and Telecommunications Infrastructure Regulations	2023 Schedule 1
Support Period	5 years after the EOL notification

Please note that this statement of compliance, including the Defined Support Period stated herein, is only applicable to products sold in the UK. This Statement of Compliance is retained by DrayTek for 10 years after date of issue

## EU Declaration of Conformity

Hereby, DrayTek Corporation declares that the equipment type Vigor2865 is in compliance with EU EMC Directive 2014/30/EU, Low Voltage Directive 2014/35/EU and RoHS 2011/65/EU. The full text of the EU Declaration of Conformity is available at the following internet address: <https://fw.draytek.com.tw/Vigor2865/Document/CE/>

- Product name: VDSL2 Security Firewall
- Model number: Vigor2865
- Manufacturer: DrayTek Corp.
- Address: No.26, Fushing Rd., Hukou, Hsinchu Industrial Park, Hsinchu 303, Taiwan

## Regulatory Information

### Federal Communication Commission Interference Statement

This equipment has been tested and found to comply with the limits for a Class B digital device, pursuant to Part 15 of the FCC Rules. These limits are designed to provide reasonable protection against harmful interference in a residential installation. This equipment generates, uses and can radiate radio frequency energy and, if not installed and used in accordance with the instructions, may cause harmful interference to radio communications. However, there is no guarantee that interference will not occur in a particular installation. If this equipment does cause harmful interference to radio or television reception, which can be determined by turning the equipment off and on, the user is encouraged to try to correct the interference by one of the following measures:

- Reorient or relocate the receiving antenna.
- Increase the separation between the equipment and receiver.
- Connect the equipment into an outlet on a circuit different from that to which the receiver is connected.
- Consult the dealer or an experienced radio/TV technician for help

This device complies with Part 15 of the FCC Rules. Operation is subject to the following two conditions:

1. This device may not cause harmful interference, and
2. This device may accept any interference received, including interference that may cause undesired operation.

USA Local Representative	Company name	ABP International Inc.			
	Address	13988 Diplomat Drive Suite 180 Dallas TX 75234			
	ZIP Code	75234	E-mail	<a href="mailto:itadmin@abptech.com">itadmin@abptech.com</a>	
	Contact Person	Mr. Henry N Castillo	Tel.	(972)831-1600 140	

**Caution:**

- Any changes or modifications not expressly approved by the grantee of this device could void the user's authority to operate the equipment.
- Any changes or modifications not expressly approved by the party responsible for compliance could void the user's authority to operate this equipment.
- This transmitter must not be co-located or operating in conjunction with any other antenna or transmitter.

**Radiation Exposure Statement:**

This equipment complies with FCC radiation exposure limits set forth for an uncontrolled environment. This equipment should be installed and operated with minimum distance 20cm between the radiator & your body.

More update, please visit [www.draytek.com](http://www.draytek.com).

The external power supply used for each product will be model-dependent.

		1	2	3	4	5	6	7	8	9	10	11	12
A	Manufacturer	CWT	CWT	CWT	CWT	CWT	APD	APD	APD	APD	MOS O	MOS O	MOS O

B	Address	No. 22, Sec. 2, Nankan Rd., Lujhu Township, Taoyuan County 338, Taiwan	No. 22, Sec. 2, Nankan Rd., Lujhu Township, Taoyuan County 338, Taiwan	No. 22, Sec. 2, Nankan Rd., Lujhu Township, Taoyuan County 338, Taiwan	No. 22, Sec. 2, Nankan Rd., Lujhu Township, Taoyuan County 338, Taiwan	No. 22, Sec. 2, Nankan Rd., Lujhu Township, Taoyuan County 338, Taiwan	No.5, Lane 83, Lung-Sou St., Taoyuan City 330, Taiwan	No.5, Lane 83, Lung-Sou St., Taoyuan City 330, Taiwan	No.5, Lane 83, Lung-Sou St., Taoyuan City 330, Taiwan	No.5, Lane 83, Lung-Sou St., Taoyuan City 330, Taiwan	Sangtaidu Industrial Park, Guanwai Xiaobaimang Songbai Road, Nanshan District, 518108 Shenzhen, Guangdong, China	Sangtaidu Industrial Park, Guanwai Xiaobaimang Songbai Road, Nanshan District, 518108 Shenzhen, Guangdong, China	Sangtaidu Industrial Park, Guanwai Xiaobaimang Songbai Road, Nanshan District, 518108 Shenzhen, Guangdong, China
C	Model identifier	2ABB012FUK	2ABB018FEU	2ABL024FEU	2ABL030FEU	2ABN036FEU	WA-12M12FG	WB-18D12FG	WA-24Q12FG	WA-36A12FG	MS-V2000R120-024Q0-GB	MSS-V2500WR120-030E0-GB	V30-V3000R120-036T0-GB
		2ABB012FEU	2ABB018FEU	2ABL024FEU	2ABL030FEU	2ABN036FEU	WA-12M12FK	WB-18D12FK	WA-24Q12FK	WA-36A12FK	MS-V2000R120-024Q0-DE	MSS-V2500WR120-030E0-DE	V30-V3000R120-036T0-DE
D	Input voltage	100~240V	100~240V	100~240V	100~240V	100~240V	100~240V	100~240V	100~240V	100~240V	100~240V	100~240V	100~240V
E	Input AC frequency	50/60 Hz	50/60 Hz	50/60 Hz	50/60 Hz	50/60 Hz	50/60 Hz	50/60 Hz	50/60 Hz	50/60 Hz	50/60 Hz	50/60 Hz	50/60 Hz
	Output voltage DC	12.0V	12.0V	12.0V	12.0V	12.0V	12.0V	12.0V	12.0V	12.0V	12.0V	12.0V	12.0V
F	Output current	1.0A	1.5A	2.0A	2.5A	3.0A	1.0A	1.5A	2.0A	3.0A	2.0A	2.5A	3.0A
G	Output power	12.0W	18.0W	24.0W	30.0W	36.0W	12.0W	18.0W	24.0W	36.0W	24.0W	30.0W	36.0W

H	Average active efficiency	84.9 %	86.2 %	87.6 %	87.8 %	89.8 %	83.7 %	85.4 %	88.6 %	88.2 %	87.8 %	89.5 %	89.3 %
I	Efficiency at low load 10 %	73.6 %	78.0 %	81.3 %	83.3 %	83.7 %	74.5 %	80.5 %	86.4 %	85.4 %	85.4 %	84.7 %	87.7 %
J	No-load power consumption	0.07 W	0.07 W	0.07 W	0.07 W	0.07 W	0.07 W	0.10 W	0.07 W	0.10 W	0.10 W	0.08 W	0.10 W

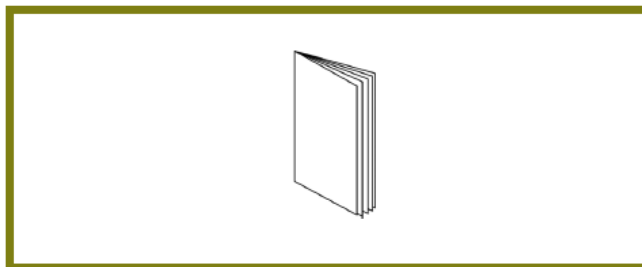
External power supply (Power Adapter) information. For more update, please visit [www.draytek.com](http://www.draytek.com).

## Package Content

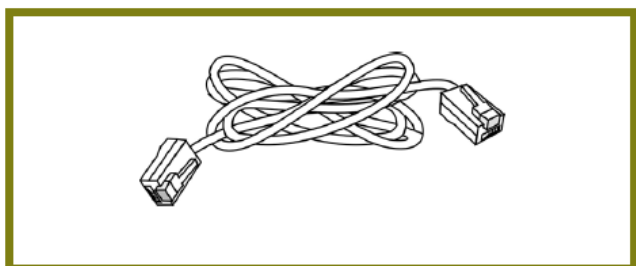
Take a look at the package content. If there is anything missed or damaged, please contact DrayTek or dealer immediately.



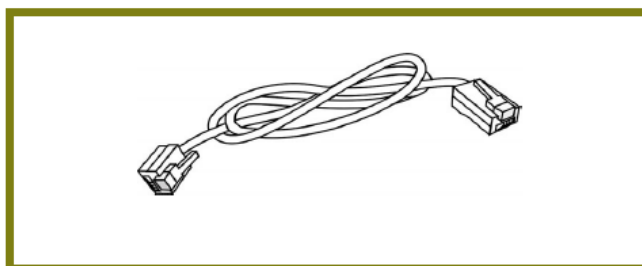
**Vigor router**



**Quick Start Guide**

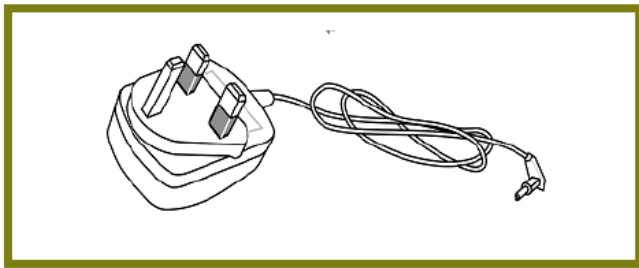


**RJ-45 Cable (Ethernet)**

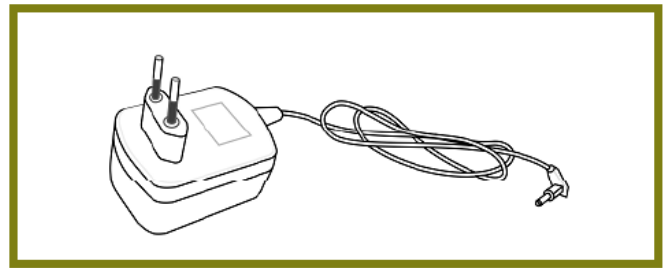


**RJ-11 to RJ-45 Cable (Annex B)  
RJ-11 to RJ-11 Cable (Annex A)**

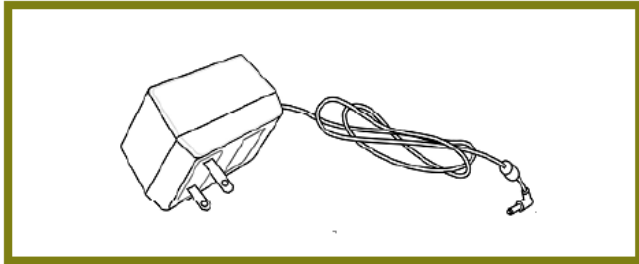
The type of the power adapter depends on the country that the router will be installed. \* The maximum power consumption is 22 Watts.



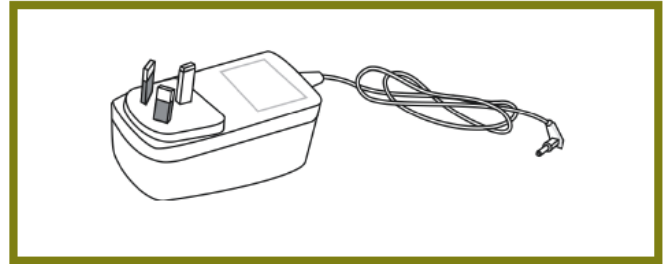
**UK-type Power Adapter**



**EU-type Power Adapter**

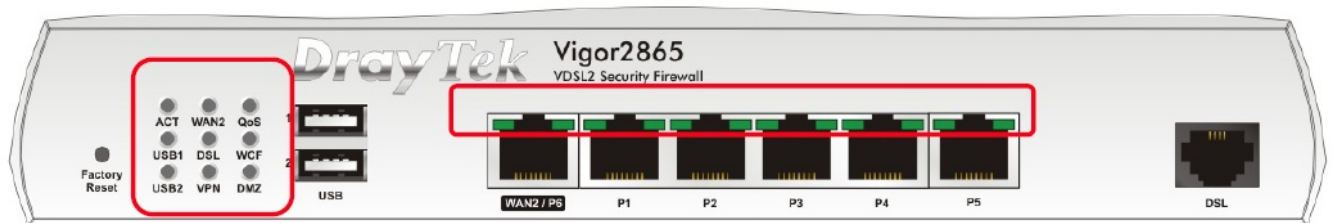


**USA/Taiwan-type Power Adapter**



**AU/NZ-type Power Adapter**

### Panel Explanation

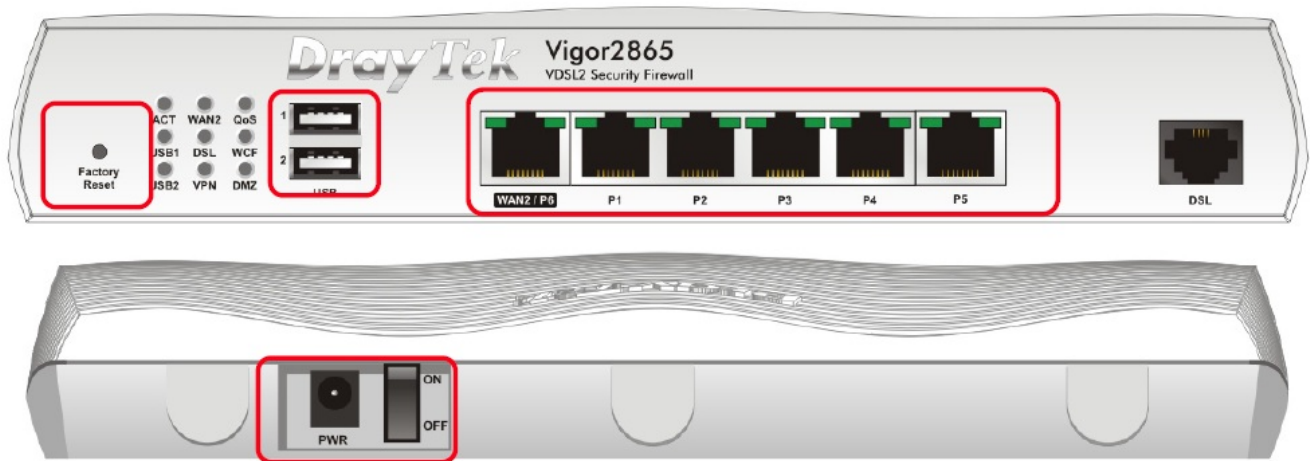




LED	Status	Explanation
ACT	Off	The router is powered off.
	Blinking	The router is powered on and running normally.
WAN2	On	Internet connection is ready.
	Off	Internet connection is not ready.
	Blinking	The data is transmitting.
QoS	On	The QoS function is active.
	Off	The QoS function is inactive.
USB1~2	On	USB device is connected and ready for use.
	Off	No USB device is connected.
	Blinking	The data is transmitting.
DSL	On	The router is ready to access Internet through DSL link.
	Blinking	Slowly: The DSL connection is ready. Quickly: The connection is training.
WCF	On	The Web Content Filter is active. (It is enabled from <b>Firewall &gt;&gt; General Setup</b> ).
	Off	WCF is disabled.
VPN	On	The VPN tunnel is active.
	Off	VPN services are disabled
	Blinking	Traffic is passing through VPN tunnel.
DMZ	On	The DMZ function is enabled.
	Off	The DMZ function is disabled.
	Blinking	The data is transmitting.

WAN2 / P6	Left LED	On	The port is connected.
		Off	The port is disconnected.
		Blinking	The data is transmitting.
	Right LED	On	The port is connected with 1000Mbps.
		Off	The port is connected with 10/100Mbps.
LAN P1~P5	Left LED	On	The port is connected.
		Off	The port is disconnected.
		Blinking	The data is transmitting.
	Right LED	On	The port is connected with 1000Mbps.
		Off	The port is connected with 10/100Mbps

The port “WAN2 / P6” is switchable. It can be used for LAN connection or WAN connection according to the settings configured in WUI.



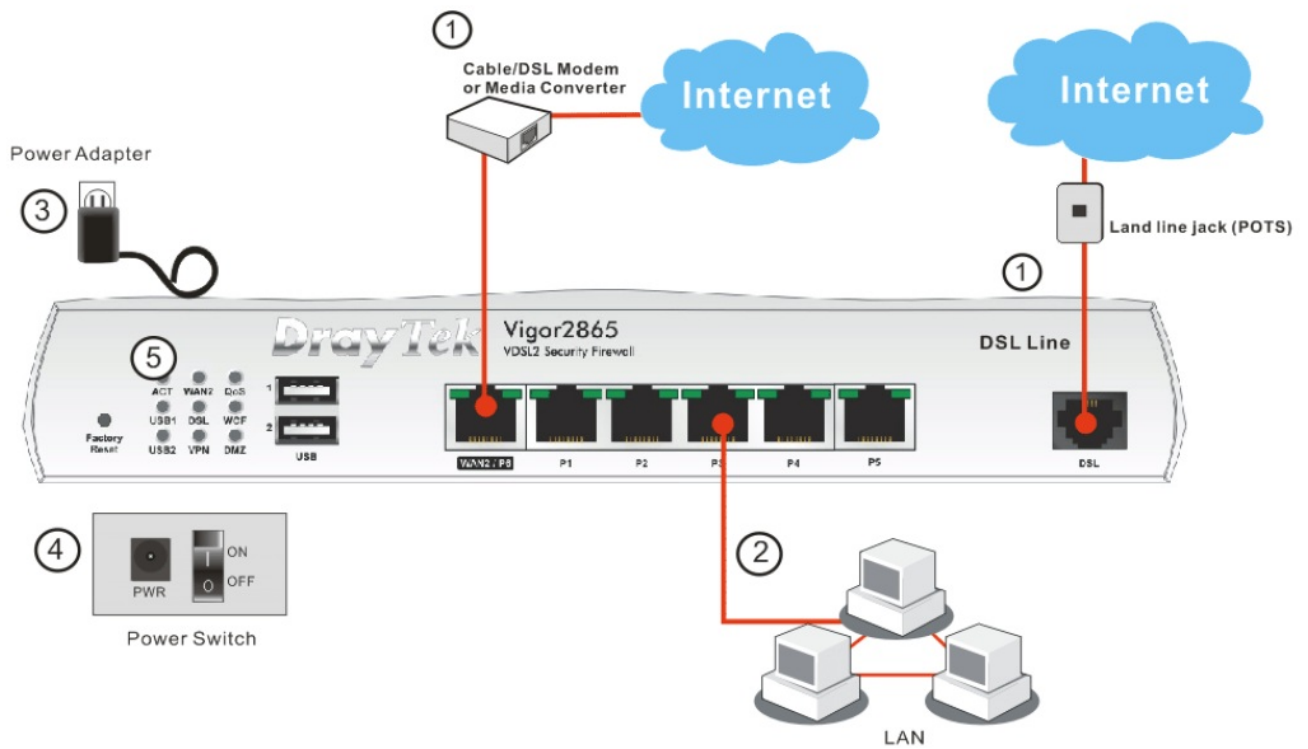
Interface	Description
Factory Reset	Restore the default settings. Usage: Turn on the router (ACT LED is blinking). Press the hole and keep for more than 5 seconds. When you see the ACT LED begins to blink rapidly than usual, release the button. Then the router will restart with the factory default configuration.
USB1~2	Connector for a USB device (for 3G/4G USB Modem or printer or thermometer).
WAN2 / P6	Connector for local network devices or modem for accessing Internet.
LAN P1-P5	Connectors for local network devices.
DSL	Connector for accessing the Internet.
PWR	Connector for a power adapter.
ON/OFF	Power Switch.

## Hardware Installation

- This section will guide you to install the router through hardware connection and configure the router's settings through web browser.
- Before starting to configure the router, you have to connect your devices correctly.

## Network Connection

1. Connect the DSL interface to the land line jack with a DSL line cable, or Connect the cable Modem/DSL Modem/Media Converter to the WAN port of router with Ethernet cable (RJ-45).
2. Connect one end of an Ethernet cable (RJ-45) to one of the LAN ports of the router and the other end of the cable (RJ-45) into the Ethernet port on your computer.
3. Connect one end of the power adapter to the router's power port on the rear panel, and the other side into a wall outlet.
4. Power on the device by pressing down the power switch on the rear panel.
5. The system starts to initiate. After completing the system test, the ACT LED will light up and start blinking. (For the detailed information of LED status, please refer to section 2. Panel Explanation)

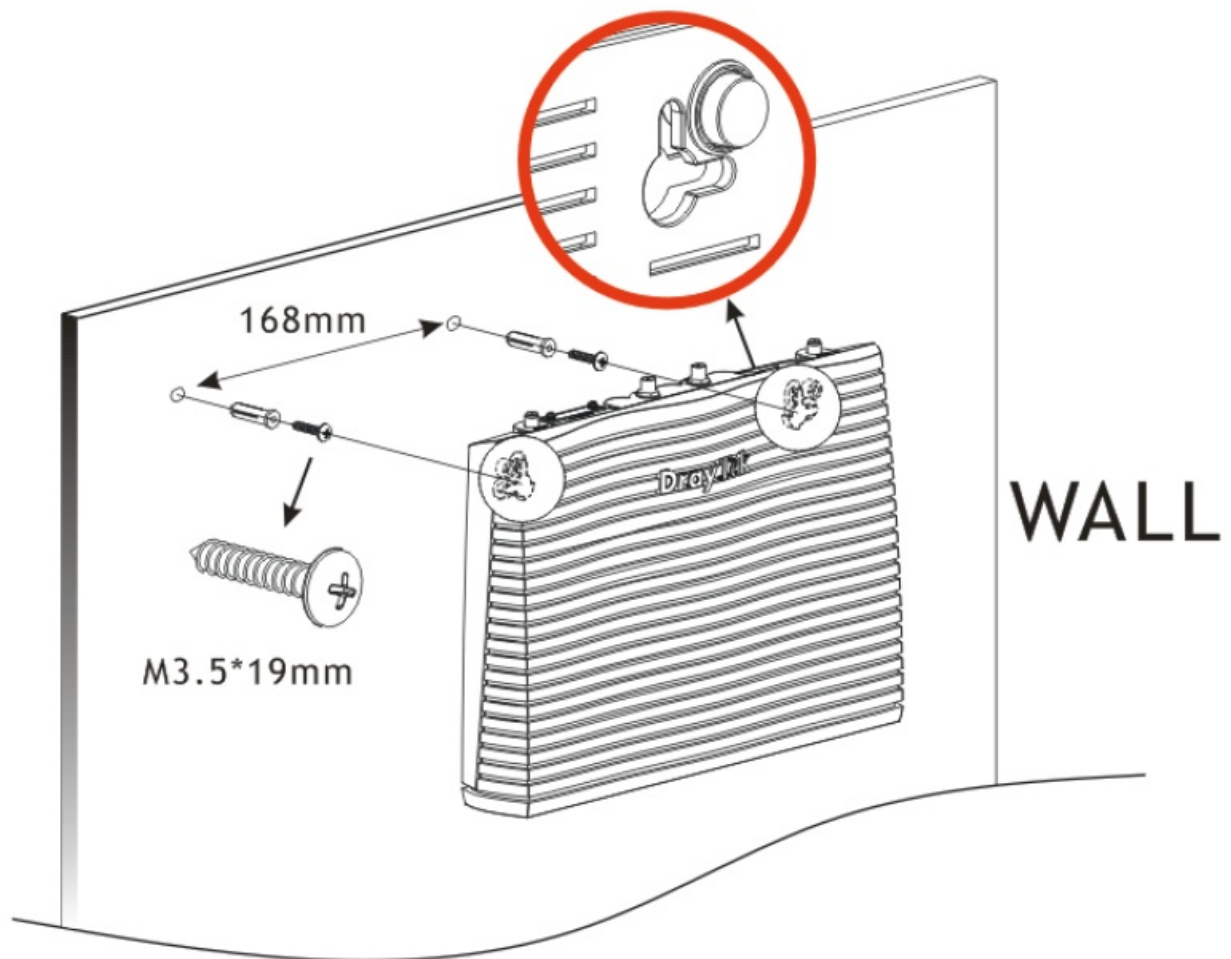


### Wall-Mounted Installation

Vigor router has keyhole type mounting slots on the underside.

**Note** The recommended drill diameter shall be 6.5mm (1/4").

1. Drill two holes on the wall. The distance between the holes shall be 168mm.
2. Fit screws into the wall using the appropriate type of wall plug



3. When you finished about procedure, the router has been mounted on the wall firmly.

## Software Configuration

To access Internet, please finish basic configuration after completing the hardware installation

### Quick Start Wizard for Network Connection

The Quick Start Wizard is designed for you to easily set up your router for Internet access. You can directly access the Quick Start Wizard via Web Configurator. Make sure your PC connects to the router correctly.

### Note

You may either simply set up your computer to get IP dynamically from the router or set up the IP address of the computer to be the same subnet as the default IP address of Vigor router 192.168.1.1. For the detailed information, please refer to – Trouble Shooting of the user's guide

Open a web browser on your PC and type **http://192.168.1.1**. A pop-up window will open to ask for username and password.



The image shows the login interface for a DrayTek Vigor2865 Series device. It features a red header with the DrayTek logo and 'Vigor2865 Series'. Below the header is a 'Login' tab. The login form includes fields for 'Username' (pre-filled with 'admin'), 'Password' (masked with dots), and 'Language' (set to 'English' with a dropdown arrow). A 'Login' button is positioned to the right of the password field. Below the form, a security warning states: 'Security Warning: You are logging in without encryption which is not recommended. To login securely [click here](#).' At the bottom, a copyright notice reads: 'Copyright© 2000-2023 DrayTek Corp. All Rights Reserved.'

Please enter “admin/admin” as the Username/Password and click Login.  
Next, the following page will appear. You must change the login password before accessing the web user interface. Please set a password with the highest level of strength for network security.

**For security reason, you must change the password before proceeding to the router webpage**

#### New Password

Password	<input type="password" value="....."/>
Confirm Password	<input type="password" value="....."/>

Password Strength:

Weak

Medium

Strong

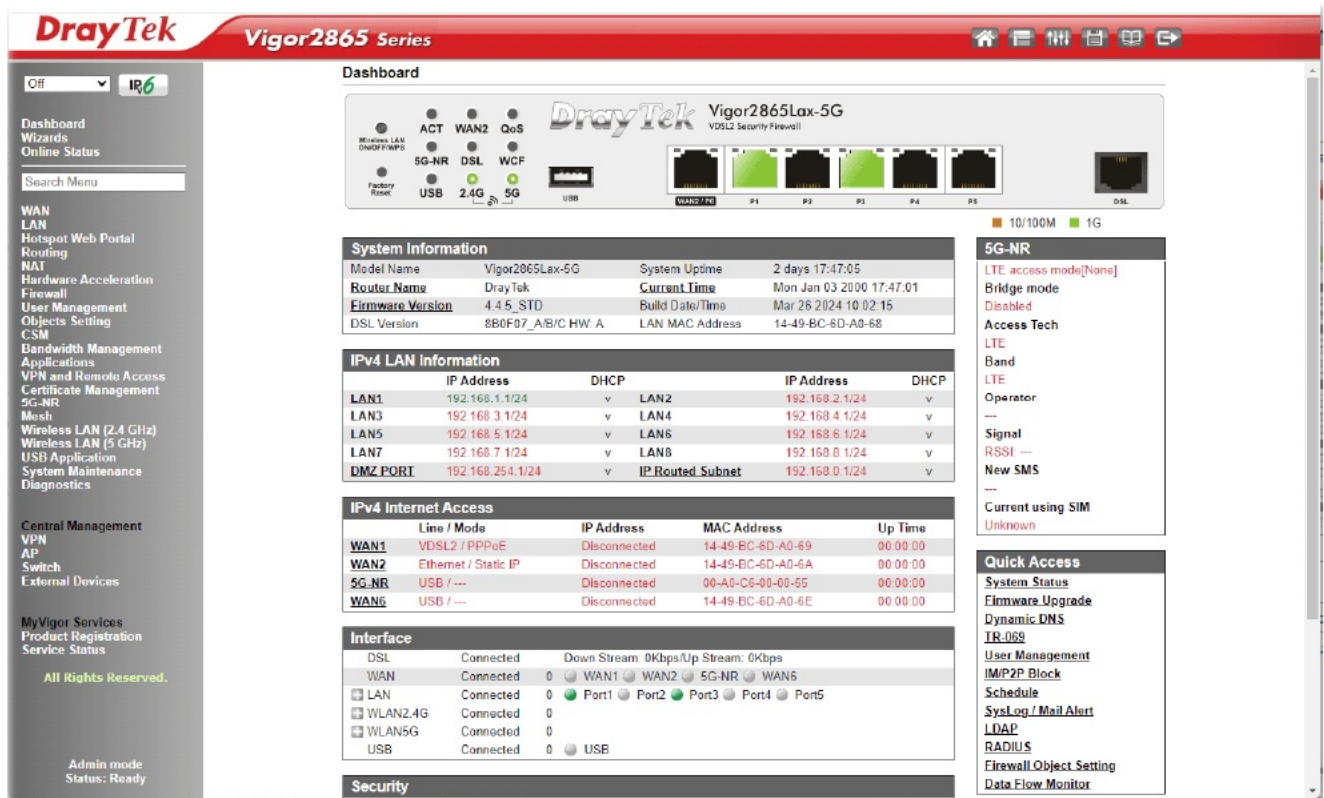
Strong password requirements:

1. Minimal length is 8 characters.
2. Must use at least 1 Upper and 1 lower character.
3. Must use at least 1 numeric or special character.
4. The Password cannot contain only the character "\*".

#### Note

If you fail to access to the web configuration, please go to “Trouble Shooting” on User’s Guide for detecting and solving your problem.

Now, the Main Screen will pop up. Click Wizards>>Quick Start Wizard



- If your router can be under an environment with high speed NAT, the configuration provide here can help you to deploy and use the router quickly. The first screen of Quick Start Wizard is entering login password. After typing the password, please click Next.

### Quick Start Wizard

#### Enter login password

Please enter an alpha-numeric string as your **Password** (Max 83 characters)

Old Password

New Password

Confirm Password

Password Strength:

Weak

Medium

Strong

Strong password requirements:  
1. Have at least one upper-case letter and one lower-case letter.  
2. Including non-alphanumeric characters is a plus.

Hint: If you want to keep the password unchanged, leave the password blank and press "Next" button to skip this process.

< Back

Next >

Finish

Cancel

- On the next page as shown below, please select the WAN interface that you use. If DSL interface is used, please choose WAN1; if Ethernet interface is used, please choose WAN2; if 3G USB modem is used, please choose WAN5 or WAN6. Then click Next for next step. WAN1, WAN2, WAN5 and WAN6 will bring up different configuration page. Here, we take WAN1 (ADSL/VDSL2) as an example.

## Select WAN Interface

Select WAN Interface:	WAN1 ▾
Display Name:	<input type="text"/>
Physical Mode:	ADSL / VDSL2
DSL Mode:	Auto ▾
Physical Type:	Auto negotiation ▾
VLAN Tag insertion(ADSL):	Disable ▾
Tag value	<input type="text"/> (0~4095)
Priority	<input type="text"/> (0~7)
VLAN Tag insertion (VDSL2) :	Disable ▾
Tag value	<input type="text"/> (0~4095)
Priority	<input type="text"/> (0~7)

&lt; Back

Next &gt;

Finish

Cancel

- Click Next to go to the following page. You have to select the appropriate Internet access type according to the information from your ISP. For example, you should select PPPoE mode if the ISP provides you PPPoE interface. In addition, the field of For ADSL Only will be available only when ADSL is detected. Then click Next for next step.

## Quick Start Wizard

## Connect to Internet

<b>WAN 1</b>	
Protocol	PPPoE / PPPoA ▾
<b>For ADSL Only:</b>	
Encapsulation	PPPoE LLC/SNAP ▾
VPI	<input type="text"/> 0 <input type="button" value="Auto detect"/>
VCI	<input type="text"/> 38
Fixed IP	<input type="radio"/> Yes <input checked="" type="radio"/> No(Dynamic IP)
IP Address	<input type="text"/>
Subnet Mask	<input type="text"/>
Default Gateway	<input type="text"/>
Primary DNS	<input type="text"/> 8.8.8.8
Second DNS	<input type="text"/> 8.8.4.4

&lt; Back

Next &gt;

Finish

Cancel

## PPPoE/PPPoA

- Choose WAN1 as WAN Interface and click the Next button; you will get the following page.

## Quick Start Wizard

### Connect to Internet

<b>WAN 1</b>	
Protocol	PPPoE / PPPoA ▼
<b>For ADSL Only:</b>	
Encapsulation	PPPoE LLC/SNAP ▼
VPI	0 <span>Auto detect</span>
VCI	38
Fixed IP	<input type="radio"/> Yes <input checked="" type="radio"/> No(Dynamic IP)
IP Address	<input type="text"/>
Subnet Mask	<input type="text"/>
Default Gateway	<input type="text"/>
Primary DNS	8.8.8.8
Second DNS	8.8.4.4

< Back Next > Finish Cancel

2. After finished the above settings, simply click Next.

## Quick Start Wizard

### Set PPPoE / PPPoA

<b>WAN 1</b>	
Service Name (optional)	CHTI
Username	77494727@hinet.net
Password	*****
Confirm Password	*****

< Back Next > Finish Cancel

3. Please manually enter the Username/Password provided by your ISP. Then click Next for viewing summary of such connection.



## Quick Start Wizard

Please confirm your settings:

WAN Interface:	WAN1
Physical Mode:	ADSL / VDSL2
VPI:	0
VCI:	38
Protocol / Encapsulation:	PPPoE / LLC
Fixed IP:	No
Primary DNS:	8.8.8.8
Secondary DNS:	8.8.4.4

< Back

Next >

Finish

Cancel

- Click Finish. A page of Quick Start Wizard Setup OK!!! will appear. Then, the system status of this protocol will be shown.
- Now, you can enjoy surfing on the Internet.

### MPoA / Static or Dynamic IP

- Choose WAN1 as WAN Interface and click the Next button; you will get the following page.

## Quick Start Wizard

### Connect to Internet

#### WAN 1

Protocol

MPoA / Static or Dynamic IP ▼

#### For ADSL Only:

Encapsulation

1483 Bridged IP LLC ▼

VPI

0

Auto detect

VCI

38

Fixed IP

☐ Yes ☒ No(Dynamic IP)

IP Address

Subnet Mask

Default Gateway

Primary DNS

8.8.8.8

Second DNS

8.8.4.4

< Back

Next >

Finish

Cancel

- Please type in the IP address/mask/gateway information originally provided by your ISP. Then click Next for viewing summary of such connection.

## Quick Start Wizard

Please confirm your settings:

WAN Interface:	WAN1
Physical Mode:	ADSL / VDSL2
VPI:	0
VCI:	38
Protocol / Encapsulation:	1483 Bridge LLC
Fixed IP:	No
Primary DNS:	8.8.8.8
Secondary DNS:	8.8.4.4

< Back

Next >

Finish

Cancel

3. Click Finish. A page of Quick Start Wizard Setup OK!!! will appear. Then, the system status of this protocol will be shown.
4. Now, you can enjoy surfing on the Internet.

## Customer Service

If the router cannot work correctly after trying many efforts, please contact your dealer for further help right away. For any questions, please feel free to send e-mail to [support@draytek.com](mailto:support@draytek.com).

### Be a Registered Owner

Web registration is preferred. You can register your Vigor router via <https://myvigor.draytek.com>.

### Firmware & Tools Updates

Due to the continuous evolution of DrayTek technology, all routers will be regularly upgraded. Please consult the DrayTek web site for more information on newest firmware, tools and documents. <https://www.draytek.com>.

### ALVACO

Telecomunicaciones Espana, S.L Avenida de Italia 10 Centro de Transportes de Coslada 28821 Coslada, Madrid,

### Spain

AntiPode 12 Rue des Chauffours 95000 Cergy – France BRINET sp. z o.o. sp.k. ul. Lubowska 23, 60-433 Poznań

### CMS

UK – CMS Distribution Limited, 15 Worship Street, London, EC2A 2DT Ireland – CMS Distribution Limited, Bohola Road, Kiltimagh, Co Mayo, Ireland

Comdate Access AB Industrivagen 44, 941 47 Pitea Sweden

IKI d.o.o. ZAGREB IKI d.o.o, Rapska 42, 10000 Zagreb, Croatia

LEXIS S.A. 2-4, Karpathou str. & Ethnikis Antistaseos, 15344, Gerakas, Athens-Greece

Network Elements Kft. 1095 Budapest Mester 37-39, B lh. alagsor 4.,

Hungary NoWire Nordic AB Box 8167, 163 08 Spanga, Sweden

OptiVisus Lda. Rua Capitão Ramires nº17A 1000-084 Lisboa, Portugal

ScanAccess A/S Kirkeltevej 138, 3450 Allerød, DK, DENMARK

Spider Electronics sas Via Enrico Fermi 11-10040, Caselette (TO) Italy.  
Telos d.o.o. Parmova 14, 1000 Ljubljana, Slovenia  
UniVorex GmbH Zeppelinstrasse 3, 12529, Schoenefeld, Germany  
Xpert Data b.v. Oosterveldsingel 2  
7558 PK Hengelo (Ov)

Documents / Resources

	<p><a href="#">DrayTek 35b Security Firewall</a> [pdf] User Guide 35b, 35b Security Firewall, 35b, Security Firewall, Firewall</p>
---	--

References

- [🏠 Home | DrayTek](#)
- [🌐 MyVigor - DrayTek](#)
- [🏠 Home | DrayTek](#)
- [📖 User Manual](#)

[Manuals+](#) [Privacy Policy](#)

This website is an independent publication and is neither affiliated with nor endorsed by any of the trademark owners. The "Bluetooth®" word mark and logos are registered trademarks owned by Bluetooth SIG, Inc. The "Wi-Fi®" word mark and logos are registered trademarks owned by the Wi-Fi Alliance. Any use of these marks on this website does not imply any affiliation with or endorsement.