



# DPR Label Rewinder All-In-One Series Label Printers User Manual

[Home](#) » [DPR](#) » DPR Label Rewinder All-In-One Series Label Printers User Manual

## Contents [ [hide](#) ]

- [1 DPR Label Rewinder All-In-One Series Label Printers](#)
- [2 APPLICATIONS](#)
- [3 POWER SUPPLY](#)
- [4 INSTALLATION](#)
- [5 HOW TO OPEN THE CORE HOLDER](#)
- [6 WORKING CONDITIONS](#)
- [7 CONTROL PANEL](#)
- [8 Other Product](#)
- [9 Documents / Resources](#)
- [10 Related Posts](#)

# DPR

**DPR Label Rewinder All-In-One Series Label Printers**



Please keep the original packaging in case you need to return the unit. If we receive the system in non-original packaging, the warranty may be void.

## **APPLICATIONS**

Those units are used to rewind/unwind the labels coming from the input or output of color label printers onto an adjustable core holder from 40mm (1.57") up to 118mm (4.64") or onto the 76mm (3") fixed core holder. The maximum label roll diameter can be 250mm (9.84") or 300mm (11.81") and the maximum label width can be 244mm (9.60") depending on the selected model.

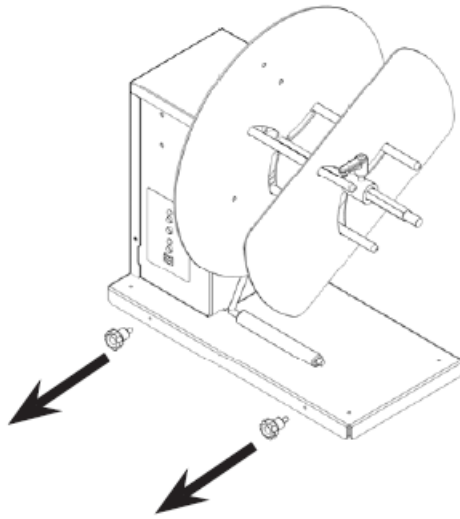
## **POWER SUPPLY**

An external power supply 100/240VAC – 2.5A at 24V allows an electronic circuit to provide, through the tension arm, the speed and sense of rotation auto adjustment.

## **INSTALLATION**

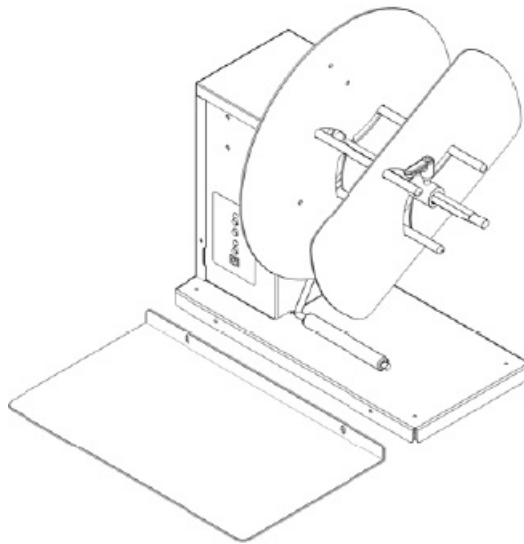
### **STEP 1**

Unscrew the two knobs.



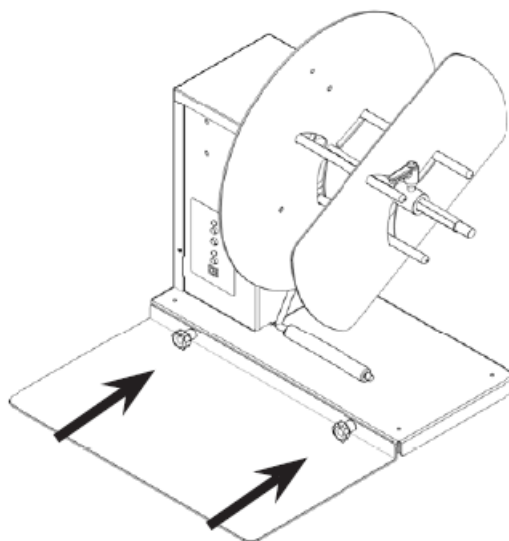
### STEP 2

Set the included printer plate beside the unit's base.



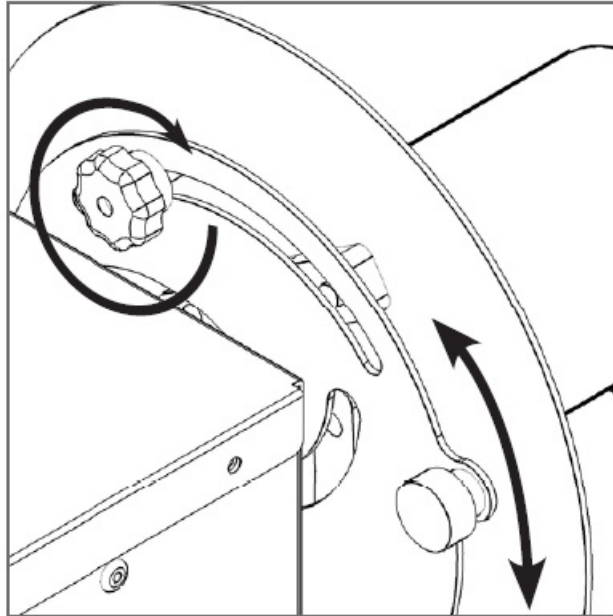
### STEP 3

Screw both plates with the two knobs.

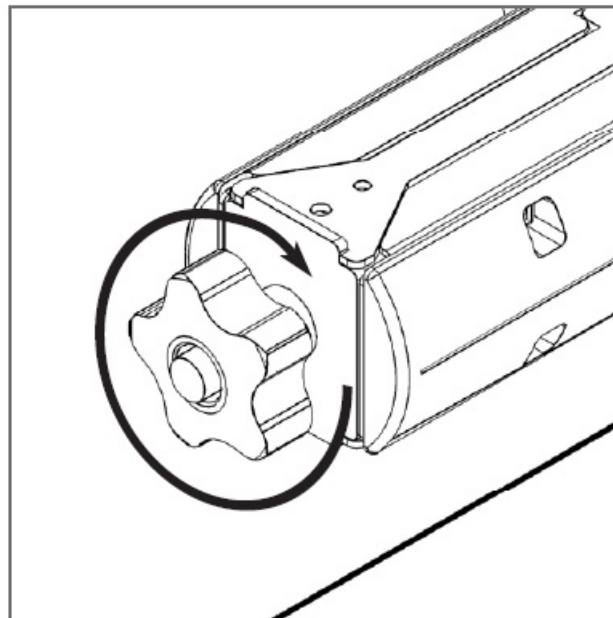


## HOW TO OPEN THE CORE HOLDER

## Adjustable core holder



## 3" Fixed core holder



## WORKING CONDITIONS

### **LABEL REWINDER “all-in-one” series:**

- When the printer forwards the media for printing, the tension arm goes down, the device rewinds the media. Yellow or green led on depending on the selected rewinding mode (face-in or face-out).
- When the tension arm is in the middle position, the device is idle. Both yellow and green LEDs on.
- When the printer backward the media, the tension arm goes up, and the device unwinds it. Yellow or green led depending on the selected rewinding mode (face-in or face-out).

### **LABEL UNWINDER “all-in-one” series:**

- When the printer forwards the media for printing, the tension arm goes up, the device unwinds the media. Yellow or green led on depending on the selected rewinding mode (face-in or face-out).

- When the tension arm is in the middle position, the device is idle. Both yellow and green leds on.
- When the printer backward the media, the tension arm goes down, the device rewinds it. Yellow or green led on depending on the selected rewinding mode (face-in or face-out).

When the unit is operating but the media is not loaded or it runs out, the tension arm reaches the lowest position and after few seconds the unit will stop by itself, both leds blink and it beeps.

## CONTROL PANEL

### ON-OFF

Push this button to turn On or Off the unit.

### INCREASE SPEED

Push this button to increase the rotation speed.

### DECREASE SPEED

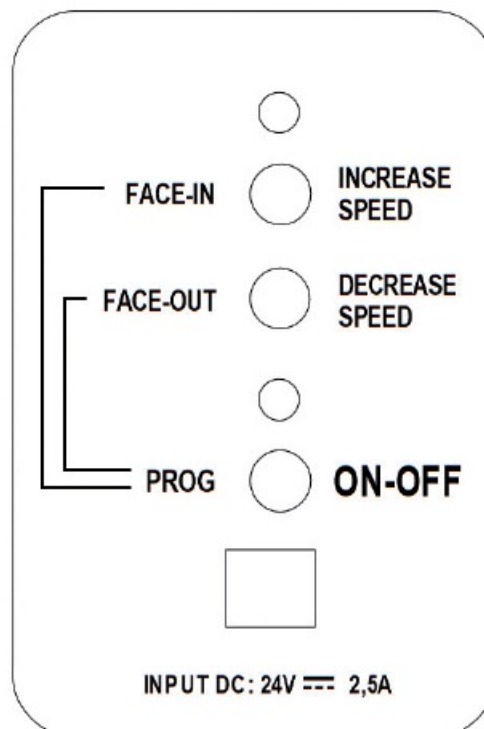
Push this button to decrease the rotation speed.

### LABEL FACE-OUT

Turn the unit off. Keep pushing the “FACE OUT” button, and push and release the “ON-OFF” button while the green led turns on and off. The unit is now ready to operate.

### LABEL FACE-IN

Turn the unit off. Keep pushing the “FACE IN” button, and push and release the “ON-OFF” button while the yellow led turns on and off. The unit is now ready to operate.



## SMART SOLUTIONS FOR THE LABELING INDUSTRY

Label rewinder, label unwinder, electronic label dispenser, and more

## Other Product



**LABEL UNWINDER/REWINDER**



**SMALL LABEL  
UNWINDER/REWINDER**



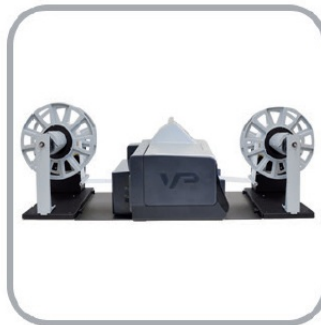
**LABEL COUNTER**



**ROLL TO ROLL SYSTEM  
FOR LABEL PRINTERS**



**ROLL TO ROLL SYSTEM  
FOR EPSON PRINTERS**



**ROLL TO ROLL SYSTEM  
FOR VIPCOLOR VP SERIES**



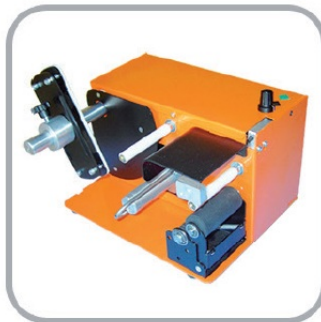
**ROLL TO ROLL SYSTEM  
FOR PRIMERA LX SERIES**



**MATRIX REMOVER AND SLITTER**



**LONGITUDINAL LABEL SLITTER**



**EASY LABEL DISPENSER**



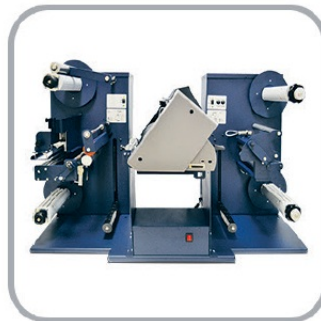
**ELECTRONIC  
LABEL DISPENSER**



**SCORPIO SERIES:  
DIGITAL LABEL FINISHING SYSTEMS**



**GEMINI:  
DIGITAL DIE CUTTER FOR SHEETS**



**VIRGO:  
DESKTOP DIGITAL FINISHING SYSTEM**



**MOTORIZED CORE HOLDER  
UNWINDER/REWINDER**

FOR MORE INFO CONTACT YOUR RESELLER.

**Documents / Resources**

123456789  
Label Rewinder "All-In-One" series  
Label Rewinder "All-In-One" series



This work is licensed under a Creative Commons Attribution-NonCommercial-ShareAlike 4.0 International License.

## [DPR Label Rewinder All-In-One Series Label Printers](#) [pdf] User Manual Label Rewinder All-In-One Series, Label Printers, Label Rewinder All-In-One Series Label Printers