

DOYON DP9 Proof Box User Manual

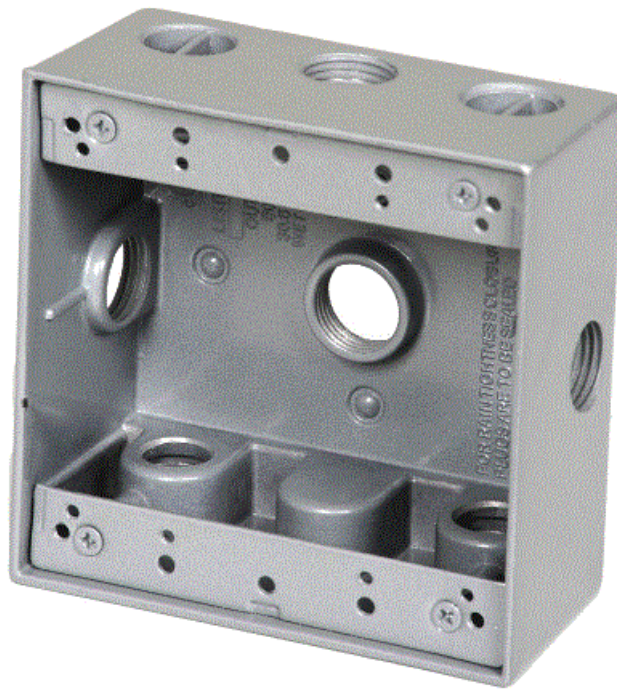
[Home](#) » [Doyon](#) » DOYON DP9 Proof Box User Manual 

Contents

- [1 DOYON DP9 Proof Box](#)
- [2 Product Information](#)
- [3 Product Usage Instructions](#)
- [4 PARTS DESCRIPTION](#)
- [5 Documents / Resources](#)
- [6 Related Posts](#)



DOYON DP9 Proof Box



Product Information

The product is a B-2 DP9, which is a device or equipment that has several parts with their respective part numbers. The device includes a base with a 1NO disjoncteur of 5 Amps and a disjoncteur of 20 Amps. It also comes with a roulette pivotante #72336 and an aimant de porte. Other parts of the device are a coil element, proofer fan blower, incandescent light socket, contactor 2P 30A 110V, relay 10A 2P coil 110V, base terminal block 2P 175A 1phase, ground lug, solenoid valve with DIN connection (110/120V 50/60Hz), solenoid valve with DIN connection (220/240V 50/60Hz), and a transformer 240/120 50VA (50 Hz only).

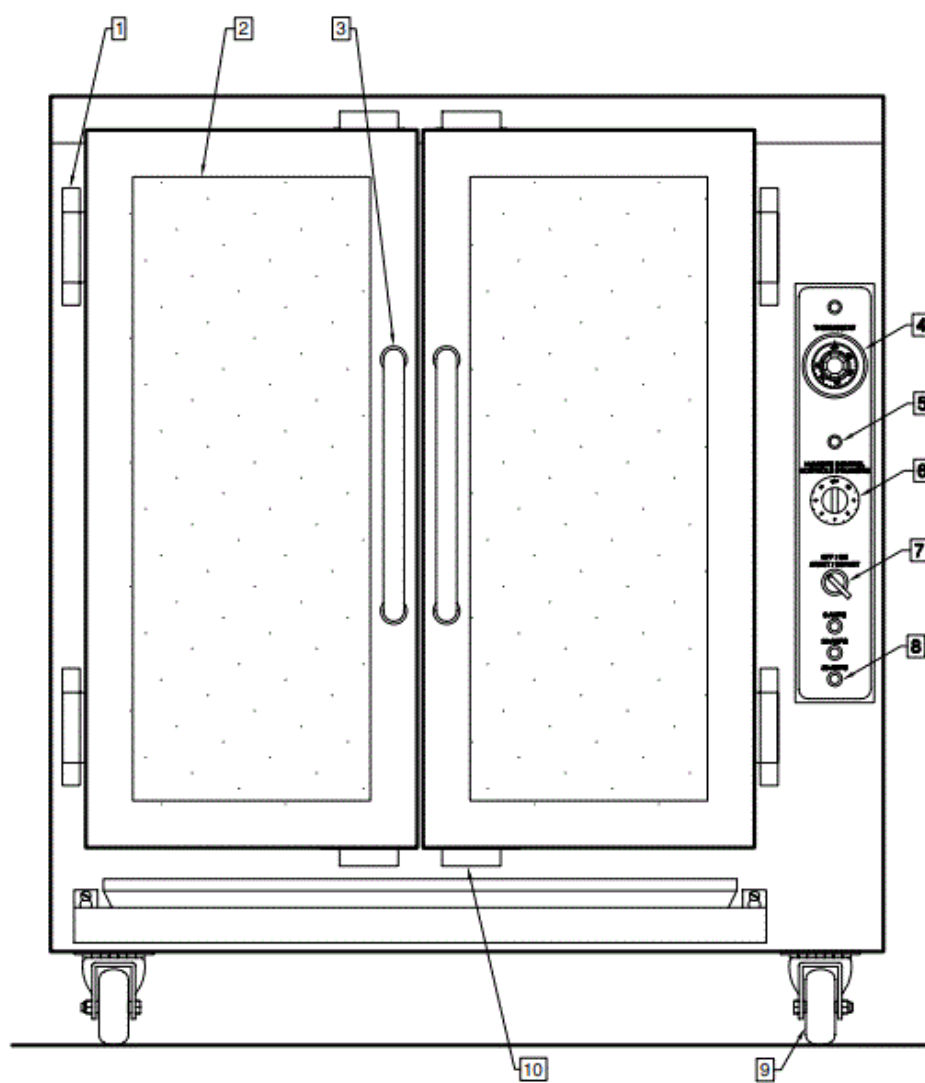
Product Usage Instructions

The B-2 DP9 device has different parts that serve various purposes. To use the device, follow these instructions:

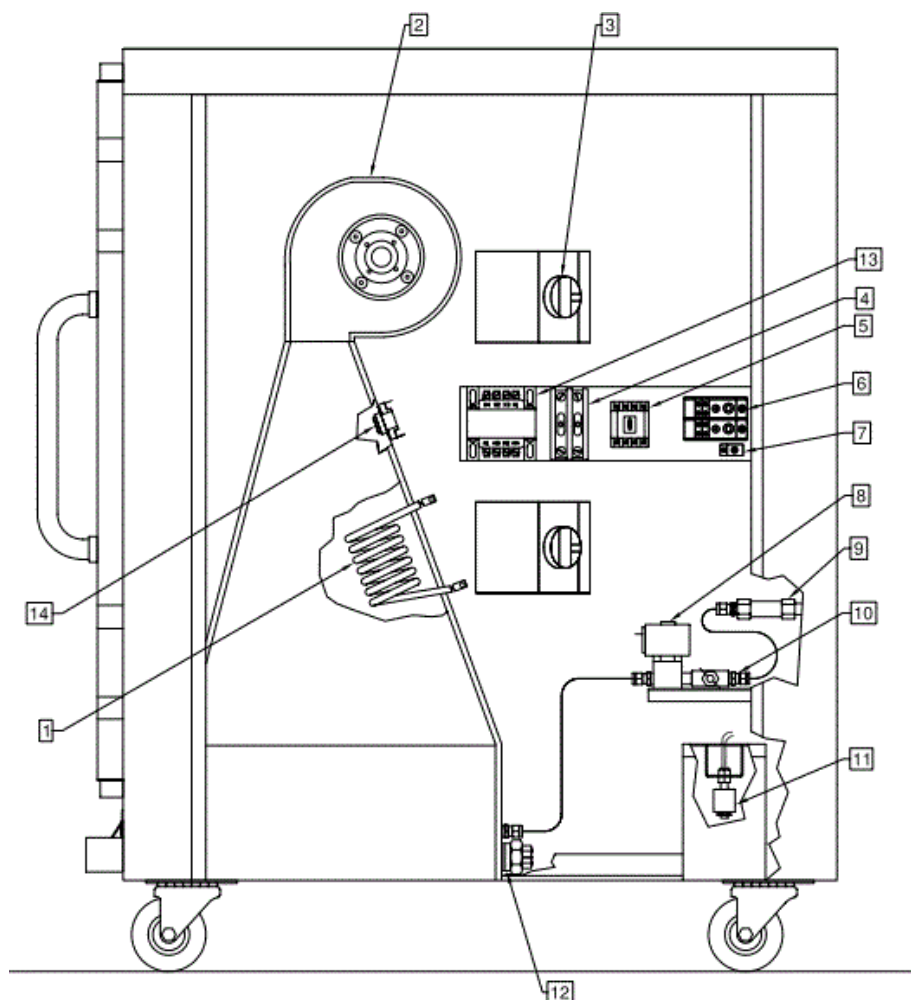
1. Attach the base to the device and connect it to the power source.
2. Install the disjoncteur of 20 Amps and the 1NO disjoncteur of 5 Amps to the base accordingly.
3. Fix the roulette pivotante #72336 and aimant de porte in their respective places on the device.
4. Connect the coil element to the power source to start heating it up.
5. Install the proofer fan blower and incandescent light socket in their respective locations.
6. Connect the contactor 2P 30A 110V and relay 10A 2P coil 110V to the device.
7. Attach the base terminal block 2P 175A 1phase and ground lug to complete the electrical connections.
8. Install the solenoid valve with DIN connection (110/120V 50/60Hz) or (220/240V 50/60Hz) in their respective places depending on the power source.
9. Attach the transformer 240/120 50VA (50 Hz only) to the device if using 50 Hz power supply.
10. Once all the parts are connected, switch on the device and start using it as per your requirements.

Note: These instructions are not exhaustive and additional safety instructions may be provided in the user manual. Always refer to the user manual for complete instructions on installation, usage, and safety guidelines.

PARTS DESCRIPTION

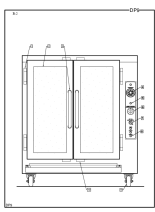


Item	Part Number	Description	Quantity
1	QUP320	DOOR HINGE	4
2	P1431E	PROOFER DOOR 14 1/4" X 31 1/2"	2
3	QUP465	DOOR HANDLE STAINLESS TUBING	2
4	ELT627	THERMOSTAT 110°F	1
AND	ELT628	THERMOSTAT KNOB 110°F	1
AND	ELT620	THERMOSTAT BEZEL	1
5	ELL650	RED PILOT LIGHT	2
6	ELI220	INFINITY SWITCH 120V (HUMIDITY CONT.)	1
AND	ELI240	INFINITY SWITCH KNOB	1
7	ELI402	BLACK SELECTOR 2 POS.	1
AND	ELI406	BASE WITH 1NO	1
8	ELB096	5A BREAKER	1
AND	ELB097	20A BREAKER	2
9	PAR100	SWIVEL CASTER #72336	4
10	QUA200	DOOR MAGNET	4



Item	Part Number	Description	Quantity
1	ELE130	COIL ELEMENT 120V 1500W	1
2	ELM730	PROOFER FAN BLOWER	1
3	ELD050	INCANDESCENT LIGHT SOCKET	2
4	ELC860	CONTACTOR 2P 30A 110V	1
5	ELC615	RELAY 10A 2P COIL 110V	1
AND	ELC617	BASE	1
6	ELB071	TERMINAL BLOCK 2P 175A 1PHASE	1
7	ELL050	GROUND LUG	1
8	ELS887	SOLENOID VALVE WITH DIN CONNECTION 110/120V 50/60HZ	1
OR	ELS888	SOLENOID VALVE WITH DIN CONNECTION 220/240V 50/60HZ	1
9	PLF100	WATER FILTER	1
10	ELV590	NEEDLE VALVE	1
11	QUF350	ELECTRIC FLOAT	1
12	ELE165	IMMERSION ELEMENT 120V 1500W	1
13	ELT712	TRANSFORMER 240/120 50VA(50 Hz ONLY)	1
14	ELT505	HIGH LIMIT TEMPERATURE 300°	1

Documents / Resources

	<p>DOYON DP9 Proof Box [pdf] User Manual DP9 Proof Box, DP9, Proof Box, Box</p>
---	--