



DOSTMANN LOG32T Series Temperature and Humidity Data Logger Instruction Manual

[Home](#) » [DOSTMANN](#) » DOSTMANN LOG32T Series Temperature and Humidity Data Logger Instruction Manual



DOSTMANN LOG32T Series Temperature and Humidity Data Logger Instruction Manual



Contents

- 1 Introduction
- 2 First Start & Begin Recording
- 3 Stop recording / Create PDF
- 4 Description of PDF result file
- 5 Standard settings / Factory settings
- 6 Battery replacement
- 7 Alarm signals
- 8 Waste Disposal
- 9 Marking
- 10 Documents / Resources
 - 10.1 References
- 11 Related Posts

Introduction

Thank you very much for purchasing one of our products. Before operating the data logger please read this manual carefully. You will get useful information for understanding all functions.

Delivery contents

- Data logger LOG32
- USB protection cap
- Wall holder
- 2x screws and dowels
- Battery 3,6 Volt (already inserted)

General advice

- Check if the contents of the package is undamaged and complete.
- Remove the protection foil above the start button and the two LEDs.
- For cleaning the instrument please do not use an abrasive cleaner only a dry or wet piece of soft cloth. Do not allow any liquid to the interior of the device.
- Please store the measuring instrument in a dry and clean place.
- Avoid any force like shocks or pressure to the instrument.
- No responsibility is taken for irregular or incomplete measuring values and their results, the liability for subsequent damages is excluded!
- Do not use the device in an environment hotter than 85°C! The lithium battery may explode!
- Do not expose the unit to microwave radiation. The lithium battery may explode!

Overview

1. Start button,
2. LED green,
3. LED red,
4. battery case,
5. USB-connector,
6. USBcover,
7. wall holder,
8. Slits ... this is where the sensor is located,
9. protective foil

Scope of delivery and usage

LOG32TH/LOG32T/LOG32THP series loggers are suitable for recording, alarm tracking, and display of temperature, humidity*, dew point* (*only LOG32TH/THP) and barometric pressure (only LOG32THP) measurements. Areas of application include the monitoring of storage and transport conditions or other temperature, moisture and / or pressure-sensitive processes. The logger has a built-in USB port can be connected without cables to all Windows PCs. The USB port is protected by a transparent plastic cap. The green LED flashes every 30 seconds during recording. The red LED is used to display limit alarms or status messages

(battery change ... etc.). The logger also has an internal buzzer that supports the user interface.

For your safety

This product is exclusively intended for the field of application described above.

It should only be used as described within these instructions.

Unauthorized repairs, modifications or changes to the product are prohibited.

Ready to use

The logger is already preset (see 5 default settings) and ready for start. It can be used immediately without any software!

First Start & Begin Recording

Press button for 2 seconds, beeper sounds for 1 second



LED lights green for 2 seconds – logging has started!



LED blinks green every 30 sec.



Restart recording

The logger is started by default by button and stopped by USB port plug-in. The measured values are plotted automatically to the PDF file.

NOTE: When you restart the existing PDF file is overwritten. Important! Always secure the generated PDF files on your PC.

Stop recording / Create PDF

Connect logger to USB port. Beeper sounds for 1 second. The recording stops. LED blinks green until result PDF is created (can take up to 40 seconds).

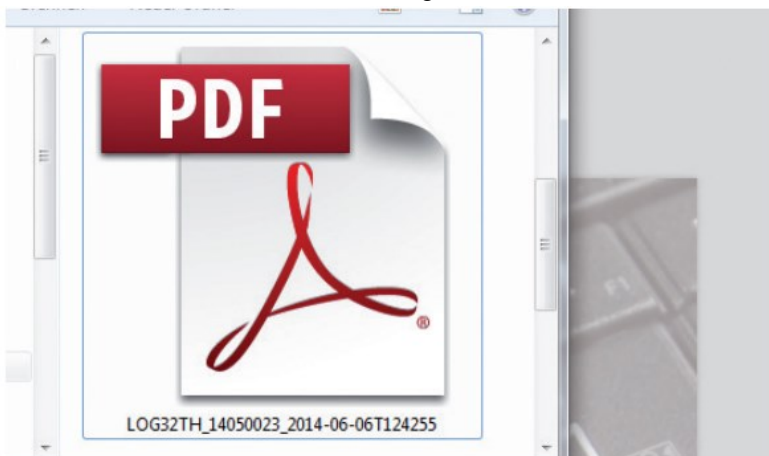


Beeper sounds and LED stays green. Logger is shown as removable drive LOG32TH/LOG32T/ LOG32THP.



View PDF and save.

PDF will be overwritten with next log start!



Description of PDF result file

Filename: e.g.
LOG32TH_14010001_2014_06_12T092900.DBF

- **A**
LOG32TH: Device
14010001: Serial
2014_06_12: Start of recording (date)
T092900: time: (hhmmss)
- **B**
Description: Log run info, edit with LogConnect* software
- **C**
Configuration: preset parameters
- **D**
Summary: Overview of measurement results
- **E**
Graphics: Diagram of measured values
- **F**
Signature: Sign PDF if required
- **G**
✓ **Measurement OK:** ✗ Measurement failed

Standard settings / Factory settings

Note the following default settings of the data logger before first use. By using the LogConnect* software, the setting parameter can easily be changed:

Interval: 5 min. LOG32TH/ LOG32THP, 15 min. LOG32T

Start possible by: Key press

Stop possible by: USB connect

Alarm: off

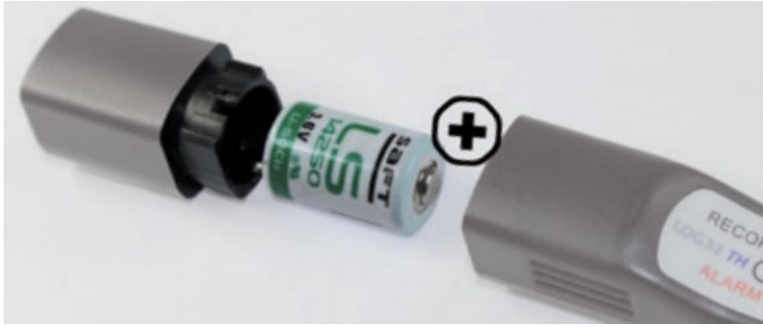
Battery replacement

ATTENTION! Please observe our battery recommendation strictly. Use only the battery type LS 14250 3.6 volt of the manufacturer SAFT or DYNAMIS Lithium Batt. LI-110 1/2 AA/S, respectively only batteries authorized by the manufacturer.

Twist rear cap (about 10°), the battery lid opens.



Remove empty battery and insert new battery like shown.



Battery change ok:
both LEDs light for 1 second, beep sounds.



NOTE: Check Logger status: Press start button for appr. 1 second. If the green LED flashes twice the logger is recording! This procedure can be done as often as you want.

Alarm signals

Logger in record mode



Beeper sounds once each 30 seconds for 1 second, red LED blinks each 3 seconds – measured values exceeds selected measurement range (not with standard settings). Alarm limits can be changed using LogConnect* software.

Logger in standby mode (not in record mode)



Red LED blinks once each 4 seconds. Replace battery.

Red LED blinks twice or more each 4 seconds. Hardware fault!

Waste Disposal

This product and its packaging have been manufactured using high-grade materials and components which can be recycled and reused. This reduces waste and protects the environment. Dispose of the packaging in an environmentally friendly manner using the collection systems that have been set up.

Disposal of the electrical device: Remove non-permanently installed batteries and rechargeable batteries from the device and dispose of them separately



This product is labelled in accordance with the EU Waste Electrical and Electronic Equipment Directive (WEEE). This product must not be disposed of in ordinary household waste. As a consumer, you are required to take end-of-life devices to a designated collection point for the disposal of electrical and electronic equipment, in order to ensure environmentally-compatible disposal. The return service is free of charge. Observe the current regulations in place



Disposal of the batteries: Batteries and rechargeable batteries must never be disposed of with household waste. They contain pollutants such as heavy metals, which can be harmful to the environment and human health if disposed of improperly, and valuable raw materials such as iron, zinc, manganese or nickel that can be recovered from waste. As a consumer, you are legally obliged to hand in used batteries and rechargeable batteries for environmentally friendly disposal at retailers or appropriate collection points in accordance with national or local regulations. The return service is free of charge. You can obtain addresses of suitable collection points from your city council or local authority. The names for the heavy metals contained are:

Cd = cadmium, Hg = mercury, Pb = lead. Reduce the generation of waste from batteries by using batteries with a longer lifespan or suitable rechargeable batteries. Avoid littering the environment and do not leave batteries or battery-containing electrical and electronic devices lying around carelessly. The separate collection and recycling of batteries and rechargeable batteries make an important contribution to relieving the impact on the environment and avoiding health risks.

WARNING! Damage to the environment and health through incorrect disposal of the batteries!

WARNING! Batteries containing lithium can explode

Batteries and rechargeable batteries containing lithium (Li=lithium) present a high risk of fire and explosion due to heat or mechanical damage with potentially serious consequences for people and the environment. Pay particular attention to correct disposal



This sign certifies that the product meets the requirements of the EEC directive and has been tested according to the specified test methods

Marking

only LOG32T

CE-conformity, EN 12830, EN 13485, Suitability for storage (S) and transportation (T) for food storage and distribution (C), Accuracy classification 1 (-30...+70°C), according to EN 13486 we recommend a recalibration once per year.

Technical changes, any errors and misprints reserved. Stand08_CHB2112

1. Start Recording:

Press until beep sounds



2. LED blinks green (every 30 sec.)



3. Insert logger into USB port



4. wait



5. View and save PDF



Fig. B

A

LOG32TH_14060010_2014-06-23T151133.DBF

LOG32TH SN 14060010 V 02.36

B

<Log Beschreibung / Log Description>

<Additional Log Info> Edit with LogConnect

C

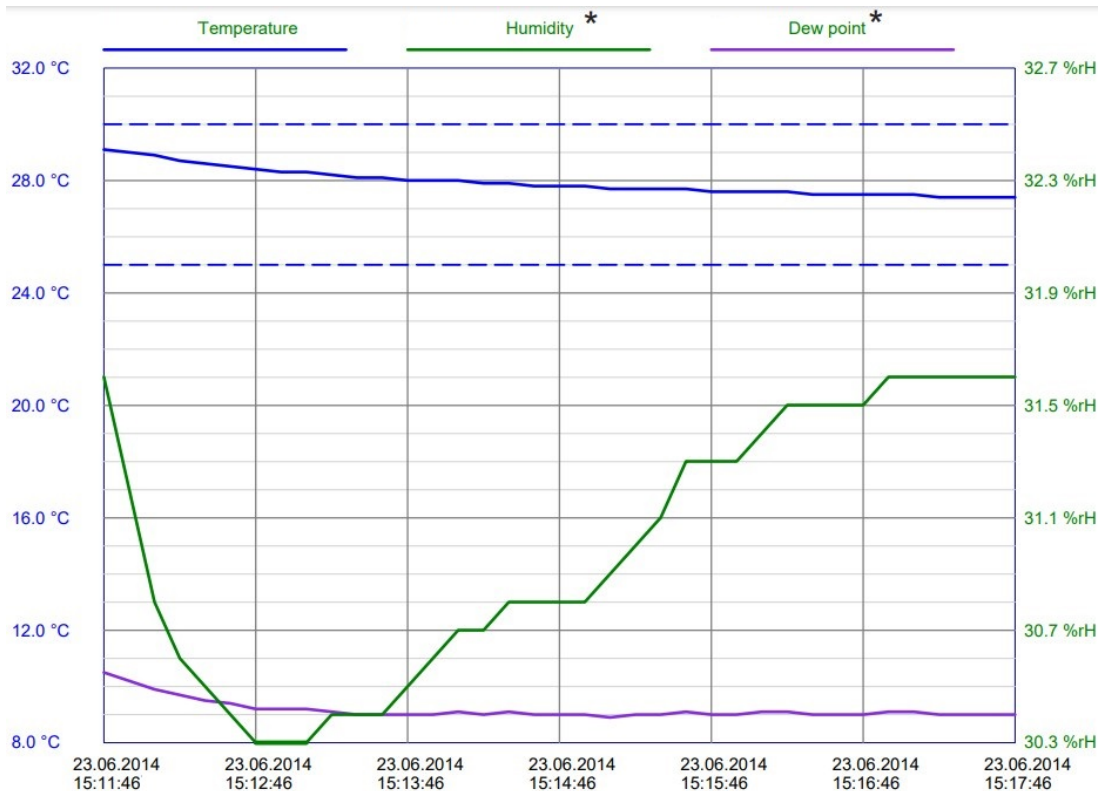
Configuration

Operator	Edit with LogConnect	
Interval	00:00:10	Button
Start possible by	USB connect	Alarm high
Stop possible by	Alarm low	30.0 °C
Temperature	25.0 °C	60.0 %rH
Humidity	30.0 %rH	
Alarm delay	00:00:00	

D

Summary

Start time	23.06.2014 15:11:46	Start by	Button
Stop time	23.06.2014 15:17:46	Stop by	USB connect
Records	37	Duration	00:06:00
Temperature	Min 27.4 °C	Avg 27.9 °C	Max 29.1 °C
Humidity	30.3 %rH	30.9 %rH	31.6 %rH
Dew point	8.9 °C	9.1 °C	10.5 °C
Alarm	Count 0		



Download free LogConnect software: www.dostmann-electronic.de/home.html >Downloads ->Software//Software/LogConnect_XXX.zip (XXX choose latest version)

DOSTMANN electronic GmbH · Waldenbergweg 3b D-97877 Wertheim · www.dostmann-electronic.de

Documents / Resources



DOSTMANN LOG32T Series Temperature and Humidity Data Logger [pdf] Instruction Manual
 LOG32T, LOG32TH, LOG32THP, LOG32T Series Temperature and Humidity Data Logger, Temperature and Humidity Data Logger, Humidity Data Logger, Data Logger

References

