

Dosell D36700C-01-SE Medicine Dispensing Robot User Manual

Contents

- 1 D36700C-01-SE Medicine Dispensing Robot**
 - 1.1 User manual
 - 1.2 Manual for Dosell medicine dispensing robot
 - 1.3 Before starting
 - 1.4 Account registration
 - 1.5 1. The contents of the package
 - 1.6 2. About Dosell
 - 1.7 2.1 Dosell Basic, Dosell Premium och Dosell Professional
 - 1.8 3. Important information
 - 1.9 4. Product Overview
 - 1.10 5. Mounting and get started
 - 1.11 Pay attention
 - 1.12 6. Use
 - 1.13 Observe
 - 1.14 Observe
 - 1.15 Pay attention
 - 1.16 Observe
 - 1.17 7. Sound and light signals
 - 1.18 9. Care and Maintenance
 - 1.19 10. Transport and storage
 - 1.20 11. Additions and consumption details
 - 1.21 14. Classification and regulatory information 14.1 CE-marking
 - 1.22 15. Explanation of symbols
- 2 Documents / Resources**
 - 2.1 References
- 3 Related Posts**

D36700C-01-SE Medicine Dispensing Robot

User manual



Manual for Dosell medicine dispensing robot

<https://manual-hub.com/>

Thank you for choosing Dosell

This user manual contains important information about Dosell. Please read the manual carefully before using the product. Keep the manual easily accessible for any future needs.

Before starting

In order for Dosell's ability to be installed and configured, the Dosell app must be downloaded on a mobile phone. The app is available for free on App Store and Google Play. For questions about installing the app, contact technical support.



Account registration

Each Dosell must have a responsible administrator paying the subscription fee. The administrator may, but need not to, be the same person who uses (gets medication dispensed by) Dosell. If you or a relative bought Dosell online, an administrator account needs to be registered at www.dosell.com before starting to use the product. The e-mail address stated on the registration will never be used other than to send out important information about Dosell, if needed.

If you received a Dosell from your healthcare provider, this is your administrator, and you do not need to register an account.

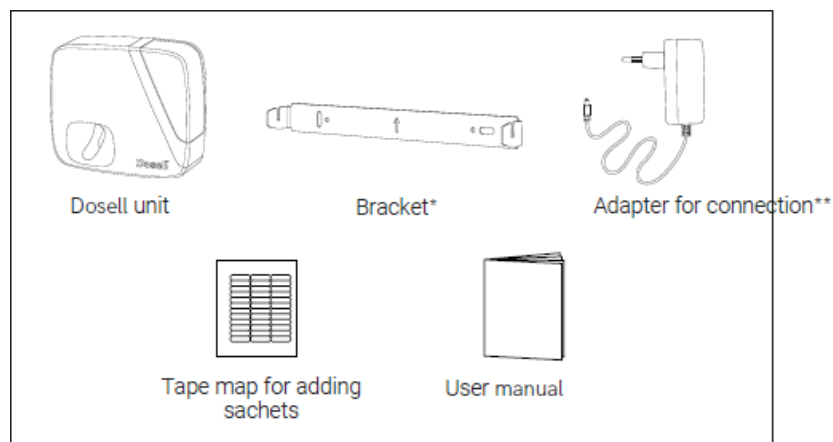
<https://manual-hub.com/>

1. The contents of the package

Our recommendation is to save Dosell's original box and content. The carton is provided with a carrying handle to be reused as a transport bag.

The packaging of Dosell contains the following items. If something is missing or damaged, please contact Dosell AB.

Dosell unit Bracket* Adapter for connection**



* The bracket is temporarily attached to the back of Dosell when delivered.

** The adapter is located on the inside of the Dosell unit. To access it, find instructions for opening the door on p. 17. Note that the information on warning of unauthorized door opening on page 17 only applies after Dosell has been connected and started up.

2. About Dosell

Dosell is an automatic medicine dispenser of dose-packed medicine on rolls. The built-in camera reads the date and time of each sachet. When it is time for the patient to take the medicine, Dosell cuts the sachet and delivers it. An audio and light signal follows to remind that there are medicines to be taken. In Dosell Premium and Dosell Professional (more about the subscription forms in the next section) it is possible to send notifications to a relative or a health care provider if the sachet is not removed from the open compartment after a certain time.

Dosell is connected to a standard wall socket with the supplied power adapter. To ensure the function, Dosell is also provided with a backup power system, namely batteries. If the power supply via the adapter would disappear, e.g. In the event of a power failure or inadvertent withdrawal, Dosell automatically switches to battery operation.

<https://manual-hub.com/>

To be able to make settings and load Dosell with sachets, it must be connected to the smartphone app Dosell, which is available for free download on App Store and Google Play. Relatives or health care personnel can control the app without the patient being involved, and these are responsible for the medication, control settings and replenishment of sachets.

2.1 Dosell Basic, Dosell Premium och Dosell Professional

Dosell offers three different types of subscriptions; Basic, Premium and Professional. Basic and Premium are suitable for users who acquire Dosell on their own. Professional is the subscription form used when the ability for healthcare providers to distribute Dosell to other users is needed. The basic functionality and the physical Dosell unit are the same for all three subscriptions, but Premium and Professional have enhanced functionality that enables Dosell to send notifications to selected recipients. Unless otherwise stated, all instructions in this user manual apply regardless of whether Basic, Premium or Professional is used.

Dosell

Basic

Managed by

the user or a relative

Dosell

Premium

Managed by

the user or a relative

Dosell

Professional

Managed by health care personell

Dispenses medicine in the right dose at the right time

Sends audio- and light signals

Managed and set with the app at the device (via Bluetooth)

Yes Yes Yes

Yes Yes Yes

Yes Yes Yes, by health care personnel (login required)

Ability to send external notifications

No Yes, to selected recipients having

the app installed on

their smartphone

Yes, to the

health care personnel

Requires login to the app No Yes, to receive notifications

<https://manual-hub.com/>

Yes, to receive notifications and make settings

In Dosell Professional (for healthcare providers) there is also a system to remote monitoring of several users' Dosell units.

Find more information about the different subscription forms or upgrade from Basic to Premium subscription at www.dosell.com.

3. Important information

3.1 Intended use

Dosell automatically dispenses dose-packed medicine bags, sachets, to enable for the user to take the right medicine at the right time.

3.2 Definition of parties

- User

The one who receive medication dispensed by Dosell. A user who has someone other than himself responsible for the medication (eg a relative or care provider) is not expected to do anything other than to take their properly filled and delivered sachet when dispensed by Dosell.

- Medication Manager

The person responsible for ensuring that the user receives his / her properly filled and delivered sachets, and the operation of Dosell (eg filling the sachets, replacing batteries and handling signals and warnings). This person may, for example, be a relative or a caregiver.

- Recipient

Anyone who receives notifications (in the app) from a user's Dosell. It can be a caregiver, user or a relative. In order for Dosell to be able to send reminders remotely, either the subscription form Dosell Premium is needed or that you

have received your Dosell by a care provider (Dosell Professional). Read more about the different subscription forms on page 6.

- Administrator

The owner of a Dosell administrator account. Anyone administering who or whom to be the recipient of notifications and handles payment of the subscription. In the case of Dosell Professional, it is always the caregiver who is the administrator.

- Healthcare personnel/Caregiver

Anyone who carries out health care, eg municipality, county council, private health or home care company.

- Pharmaceutical Prescriber

The user's responsible doctor.

<https://manual-hub.com/>

Important information about the parties

- Each Dosell can only have one user.
- A user must always be responsible for their own medication, or have a Medication Manager.
- The user can, but must not, be his own Medication Manager.
- Each Dosell can only have one administrator.
- The user can, but must not, be the administrator of its own Dosell. An administrator can otherwise typically be the user's caregiver or a relative.
- Each Dosell may have multiple recipients of notifications.

3.3 Terms of use

In order to ensure that Dosell is used correctly, the following conditions of use must always be met.

- It is always the user or the medication manager who has the ultimate responsibility to ensure that the user receives the right medication at the right time.
- Dosell is a supplemental dispensing aid for people who have already received dose bags prescribed.
- The user or the medication manager must be able to determine at each dispensation whether Dosell has dispensed the sachet on the date and time printed on the bag's label before the dose is taken.
- The user or medication manager must be able to identify a failed or absentee dispensation based on the user's normal medication interval.
- If any of the two above situations occur, the user or the medication manager, in case of doubt about how the error can be remedied, must be able to request help from the prescribing doctor or medication manager.

3.4 Safety regulations

Read the following warnings and precautions carefully before using Dosell.

- Dosell may only be used indoors in normal air pressure (between 700 and 1060 hPa) and normal humidity (between 15% and 90%).

- Do not use Dosell in environments where the temperature is below +5 ° C or above +40 ° C. If Dosell is stored at a temperature outside this range before use, it must be left unpacked at room temperature for at least 2 hours before it is started.
- Dosell may only be used with dose bags from Apoteket (ApoDos) or Pharmacy Service, and where both the bag and the contents can withstand the above indoor environment.
- Dosell is intended to dispense a maximum of one sachet per hour. 8

<https://manual-hub.com/>

- The additional services for sending external notifications can only be used within Sweden, and where mobile coverage is available.
- Dosell may only be used with dose rolls measuring at most 160 millimeters in diameter.
- Dosell must not be exposed to water or used in humid environments such as bathrooms or in close proximity to the sink.
- Dosell (including the supplied adapter) must be placed so that it is inaccessible to children. The adapter cord may cause a risk of throttling.
- Dosell must not be covered.
- Dosell must not be screwed or modified in any way.
- Dosell must not be connected to additional services other than those described in the manual.
- Dosell may only be used with the supplied adapter. If the network adapter has disappeared or been damaged, a new one can be ordered from www.dosell.com.
- Dosell may only be used mounted in an upright position on the supplied bracket.
- Service at Dosell may only be performed by Dosell AB or technicians approved by Dosell AB.

3.5 Signal words in this manual

The following symbols are used in this manual for the reader to notice important information.

Pay attention

This mark can, if not followed, lead to Dosell not being able to dispense drugs as intended. This is under the condition that the conditions of use in chapter 3.3 are always fulfilled.

Observe

If marked this way, the information is good to consider.

3.6 Guarantee

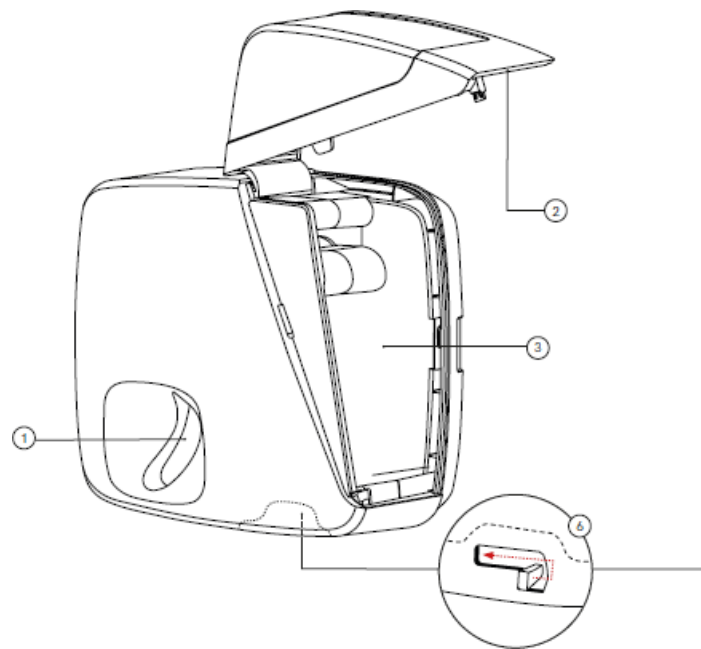
All Dosell's subscription forms include a service agreement where Dosell AB is responsible for the user having a functioning Dosell during the subscription period, under the condition that Dosell is used correctly. If a Dosell or enclosed additional is damaged, Dosell AB should be contacted for information on replacement or repair. Contact details and full terms of the service agreement can be found at www.dosell.com.

3.7 Service and support

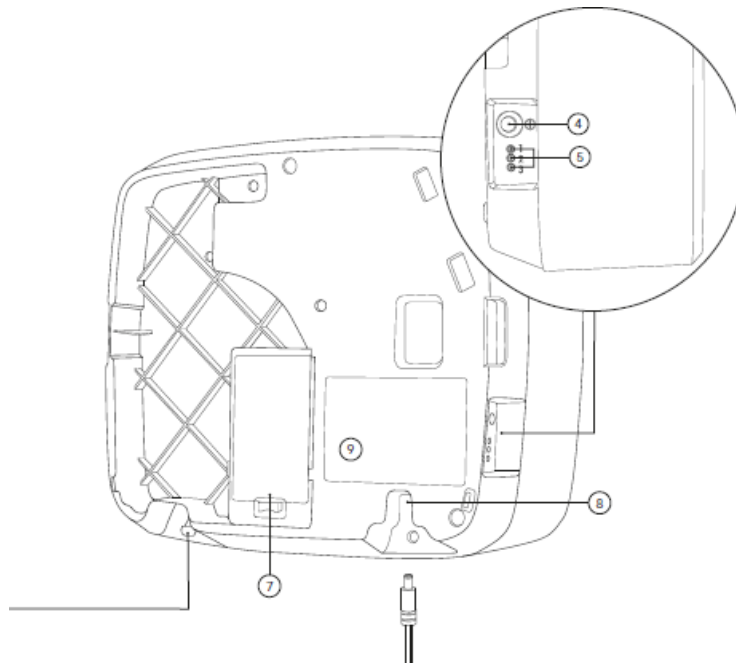
Contact Dosell AB if you have any questions about Dosell or need technical support. Contact details and answers to frequently asked questions can be found on www.dosell.com.

<https://manual-hub.com/>

4. Product Overview



1. Compartment
2. Hatch
3. Place for dose roll



- 4. On/Off button
- 5. Status lights
- 6. Lever for hatch opening

- 7. Battery compartment
- 8. Input for adapter
- 9. Label with serial number

5. Mounting and get started

Unpack Dosell and six new 1.5 V AA batteries (these are not included) in the battery compartment on the back. Make sure that the plus and minus of the batteries correspond to the marking on the inside of the battery compartment. The batteries must be installed in order for Dosell to function even though they are not normally used. They constitute a backup power system that automatically takes over if the mains voltage disappears, eg. in the event of power failure. Use only AA alkaline batteries (nonrechargeable).

If Dosell Premium or Professional is to be used, mobile coverage is required at the location where Dosell is mounted, as the 2G network is used to send notifications to recipients.

Pay attention

Position Dosell in a central location so that audio and light signals are always noticed. In a home environment that place can, for example, be in the bedroom or kitchen. Avoid placing Dosell in direct sunlight as it may have an affect of noticing the light signals.

5.1 Mount Dosell on the wall

Tools needed to mount Dosell on the wall:

- Drill
- Screw and possibly a suitable plug
- Screwdriver or screwdriver
- Spirit level

Attach the bracket with screw and any plug suitable for the wall on which Dosell is to be mounted. Anyone who assembles must be able to ensure that the wall's strength is sufficient.

Use a spirit level to make sure that the bracket is mounted horizontally. The arrow on the console should point upwards. Use the hole or slot on the bracket that fits the selected screw.

If desired, the bracket can instead be fitted with double-sided mounting tape (not included). In that case, it is highly important to choose a tape that, with margin, withstands the weight of Dosell, and that the surface where putting the tape on is smooth and well cleaned.

Pay attention

When mounting with tape – always follow the tape manufacturer's instructions and requirements. Incorrect mounting can cause Dosell to detach from the bracket and be damaged. Dosell AB are not responsible for damage to the unit caused by mounting with tape.

Hang Dosell on the bracket by sliding it inwards and then downwards as shown in the figure.

Control that the unit is pushed all the way down the tracks on the bracket, on both sides. Compare with the picture to the left.

Connect the adapter to Dosell and to a power outlet on the wall.

<https://manual-hub.com/>

5.2 Mount Dosell on a table frame (an addition)

As an alternative to wall-mounting, the bracket can be mounted on a table frame (sold separately).

5.3 Configure Dosell for a new user

Each Dosell device is associated with only one user. At first start up of a new Dosell, it must be configured for the person who will use it. This only needs to be done once.

Follow the instructions below to configure Dosell for a new user. The instructions assume that the Dosell app has been downloaded on the phone.

Start Dosell by pressing and holding the On / Off button on the left side of the unit for at least 3 seconds.

An audio signal is played as confirmation that Dosell starting up. The startup takes a few seconds.

Pay attention

Each time Dosell is started, an automatic calibration of the sensor that detects whether there is a sachet in the bag is made. Therefore, it is important that the bag tray is empty when Dosell is started.

Open the Dosell app, select Connect to Dosell * and follow the instructions in the app.

*In use of Dosell Professional, you have to be logged in to the app to connect to Dosell. You will receive login details from your employer.

When all settings are completed and the app's main menu is displayed, the first dose roller can be loaded.

<https://manual-hub.com/>

5.4 Add recipients of notifications (Dosell Premium only)

In the subscription service Dosell Premium, several people can be added as recipients for one and the same user's Dosell. All recipients receive notifications from Dosell as long as they are logged in to the Dosell app.

To manage who should be the recipient, log in to the administrator tool at www.dosell.se.

6. Use

Several of the instructions in this manual are also collected in the app under the menu "Manuals".

6.1 Dispensing of sachets

At time for medication, Dosell automatically dispenses the sachet to be taken. The bag ends up in the compartment, which flashes with green color, and a melody is played. The reminder is repeated at decreasing intervals until the bag is removed from the bag.

Once a dose roller is loaded in Dosell, access to the Dosell app is not required for the bags to get dispensed. As long as there are sachets left in Dosell, it will continue to dispense sachets at the time of ingestion.

Observe

Immediately after a dispensation, Dosell prepares the next bag by transporting and photographing it. When photographed, lights inside Dosell will light up for the camera to get a bright picture. Because the camera takes

several photos, the lights will turn on and off several times, which can be perceived as blinking with white light inside Dosell. This is normal and no sign of error.

6.1.1 If the sachet is not delivered as expected

If a technical malfunction occurs, Dosell may not be able to dispense sachets as it should. Dosell will then shine or flash pulsating with red color in the compartment. If Dosell Premium or Dosell Professional is used, a notification will be sent to all selected recipients. The status lights on the left short side can in that case help explain what type of error has occurred. A description of Dosell's various audio and light signals are found on page 22.

If Dosell is handled by a caregiver or relative (as medication manager), this person should be contacted in the first instance.

<https://manual-hub.com/>

If you, as a user, are your own medication manager – please follow the instructions on page 24 for help with troubleshooting. If this does not help, contact technical support. Contact details can be found on Dosell's website, www.dosell.se.

Observe

It is always possible to open Dosell and remove the dose roller manually, even without access to the app. See chapter 6.6.3 on page 20 for instructions on manual emergency dispensing of the dosing roller.

Functions described in section 6.2 to 6.8 are only performed by the medication manager 6.2 Turn Dosell on and off

To start Dosell, press and hold the On / Off button on the left side

of the unit for at least 3 seconds. An audio signal is played to

confirm that Dosell is starting up. The startup takes a few seconds.

Pay attention

Each time Dosell is started, an automatic calibration of the sensor that detects whether there is a sachet in the bag is made. It is therefore important that the bag tray is empty when Dosell is started.

To turn off Dosell, press and hold the On / Off button for at least 8 seconds. An audio signal is played to confirm that the device is turned off. As long as Dosell is turned off, it will not dispense sachets.

If a dose roll was loaded when Dosell was shut down, the next bag will be dispensed normally if Dosell is turned on again before the next dispensing occasion. If the next dispensation opportunity has passed when Dosell is turned on again, it will instead warn of this. The roller must then be ejected (see page 19) and all bags whose time for intake has passed must be removed. Then reload the reel according to the instructions on page 18.

When Dosell is turned off, all three status lights on the left side are off. The adapter can then be pulled out to completely disconnect it from the electric mains.

6.3 Connect to Dosell

This instruction assumes that the Dosell device is already configured for a user. If not, this needs to be done first according to the instructions on page 14.

Make sure that Bluetooth is activated on the phone in order to be connected.

<https://manual-hub.com/>

1. Open the Dosell app on your phone.
2. Select Connect to Dosell * and follow the instructions in the app.

* If you use Dosell as a healthcare personnel (Dosell Professional) you must be logged in to the app in order to connect to Dosell. You will receive login information from your employer.

6.4 Open and close the hatch

To be able to load or remove a dose roll, the door needs to be opened.

Observe

The app must always be connected to Dosell before opening the door, otherwise Dosell warns about the unauthorized opening of the door.

To open the hatch – pull the lever on the back as shown in the figure. Move the door all the way up until it locks in the upright position.

To close the hatch – carefully lower it and make sure that the locking hook (A) fits into the hatch (B). Press the outside in the corner (C) until hearing the click.

<https://manual-hub.com/>

6.5 Charge with a new dose roll

Dosell is designed to handle dose rollers measuring up to 160 millimeters in diameter. If the roll is larger, there is a risk that the dispensing of the sachets does not work because the roller cannot rotate freely in its space behind the door. If this happens, Dosell will warn that the progression has not succeeded.

Dosell handles sachets from Apoteket (ApoDos) or Apotekstjänst, and automatically recognize what type of sachet is loaded.

To load a dose roll in Dosell, follow the instructions below.

1. Connect to Dosell, see page 16.
2. If a dose roll is to be loaded into an empty Dosell, follow step 6.5.1. If an already loaded Dosell is to be filled with a new dose roll, follow step 6.5.2.

6.5.1 Charge the dose roll in an empty Dosell

To load a dose roll in an empty Dosell (eg at first start-up), select Load dose roll in the app's main menu. Confirm in the app that the name on the dose roll matches the user whose Dosell is to be loaded. Then select Load new dose roll in the app and follow the instructions.

6.5.2 Add sachets to an already loaded dose roll (refill)

When the dose roll loaded in Dosell is about to run out, it is recommended that a new roll is inserted using Dosell's accompanying tape. In this way, Dosell can be prepared with a new roll in advance.

To insert new sachets with an already loaded dose roll, select Load dosing roll in the app's main menu. Confirm in the app that the name on the dose roll matches the user whose Dosell is to be loaded. Then select add sachets to an existing dose roll in the app and follow the instructions.

Pay attention

Only use the accompanying tape that comes with Dosell. When using another tape, the function in Dosell cannot be guaranteed. One tape strip per roll is needed. If the tape runs out, more can be ordered at www.dosell.se.

<https://manual-hub.com/>

Pay attention

Follow the instructions carefully when combining dose rolls. Incorrect combining can result in Dosell being unable to read or eject bags.

6.6 Remove sachets

6.6.1 Remove dose roll

To remove a dose roll from Dosell, follow the instructions below.

1. Connect to Dosell, see page 16.
2. Open the hatch, see page 17.
3. Select Eject Dose Roll in the app's main menu and follow the instructions.
4. Remove the dose roll from Dosell.
5. Close the hatch, see page 17.

6.6.2 Remove single sachets

If the user is to leave home for a longer period of time, one or more sachets can be removed in order to avoid doses being missed. What remains on the dose roll can thereafter be re-loaded and Dosell will automatically resume dispensing in right time of the next intake.

1. Connect to Dosell, see page 16.
2. Open the hatch, see page 17.

3. Select Eject Dose Roll in the app's main menu and follow the instructions.

4. Remove the dose roll from Dosell and tear off as many sachets as needed. Always tear along the perforation of the bag.

5. Load the remaining roll; select Load dose roll in the app.

Confirm in the app that the name on the dose roll matches the user whose Dosell is to be loaded. Then select Load new dose roll in the app and follow the instructions.

6. When the dose roll is properly inserted, Dosell will dispense the next sachet at the right time, even if it is one or more days

away.

7. Close the door, see page 17.

<https://manual-hub.com/>

6.6.3 Manual emergency discharge of dose roll

If the dose roll needs to be removed and this,

for some reason, does not work – follow the

instructions below to remove it manually.

1. Open the hatch, see page 17.

2. Carefully pull the dose roll with

sachets straight out. You might

have to pull quite hard, which is

normal and does not damage the

Dosell unit.

6.7 Battery operation

Dosell is only operated on batteries in exceptional cases when the mains voltage has disappeared, e.g. in the event of a power failure or if the adapter has been pulled out. Although this happens very rarely, batteries may need to be replaced over time due to their aging. The current battery level can be read by connecting to Dosell through the app.

Dosell is designed to run on batteries for at least 12 hours,

and to be able to dispense 4 sachets during this time.

When the battery level is low, Dosell reminds about battery replacement in the app and through a reminder (the compartment is lit in red).

6.7.1 Replacing batteries

To replace batteries in Dosell, follow the instructions below.

Turn off Dosell by pressing and holding the On / Off button for at least 8 seconds. An audio signal confirm that the device has been turned off.

<https://manual-hub.com/>

Lift Dosell straight up and then outward to remove it from the bracket.

Install 6 new AA batteries in the battery compartment on the back of Dosell. Make sure that the plus and minus terminals of the batteries match the markings on the inside of the battery compartment. Recycle old batteries according to local regulations.

Re-hang Dosell on the bracket and restart it by pressing on the On / Off button.

Dosell will automatically return to its position before the battery change. If the unit was loaded with sachets at same time as the battery replacement, the next sachet will be dispensed as usual.

6.8 Change of user (reset to factory settings)

If a Dosell device is to stop being used, it can be reset to factory settings and then becomes receptive to being configured for a new user.

To delete all user information and restore Dosell to factory settings, connect to Dosell with the app and select Configuration from the main menu. Then press the dustbin at the top right corner. It is important that Dosell is emptied of any remaining sachets. If sachets are loaded in the unit at factory reset, these will be ejected backwards to facilitate emptying. Any leftover medicines should always be submitted to a pharmacy.

When reset, the Dosell device can be paired with a new user.

<https://manual-hub.com/>

7. Sound and light signals

Dosell has different types of audio and light signals depending on which event the user needs to notice. All signals can be silenced by pressing the On / Off button once.

If noticing a signal from Dosell, more information can

always be obtained by connecting to Dosell with the app.

7.1 Different signals

Below is a description of the signals that light up the compartment.

Event Light signal in compartment Audio signal

Dosell is started. Green light – three short flashes.

Dosell is turned off. Green light – three short flashes.

Ascending melody Descending melody

Dosell is susceptible to being connected to the app via Bluetooth.

Blue light – twinkling. (No audio signal)

Bluetooth connection to the app established.

Sachets have been dispensed and should be taken (when the sachet is taken out of the compartment, the signal goes out)

Blue light – steady for 10 seconds, turning to extinguish.

Green light – soft and slow pulsating.

(No audio signal)

Melody "Take medicine".

Warning – an error has occurred and Dosell cannot dispense the next sachet until it is fixed. Connect to Dosell through the app for more

information.

Red light – steady One-tone beep, repeated every ten

minutes.

22

<https://manual-hub.com/>

7.2 Status lights

The three status lights

(1-3) provide information

on Dosell's status and

assist in diagnosing if a

technical failure has

occurred.

Status light 1 – Power supply

Green Dosell is active and connected to mains voltage.

Yellow Dosell is active but lacks mains voltage and has switched to battery operation. Dosell has limited battery time – return

to mains voltage as soon as possible.

Red Dosell is active but lacks mains voltage and has switched to battery operation, and the battery level is critically low.

Turn off Dosell and replace batteries as soon as possible

(see page 20). Return to mains voltage as soon as possible.

Off (no light) Dosell is turned off.

Status light 2 – Connection to cloud service

Green Dosell is connected to the cloud.

Yellow Dosell is trying to establish a connection to the cloud

Red Dosell has failed to establish a connection to the cloud

Off (no lamp) Dosell units with Basic subscriptions, status lamp 2 is always off because the connection to the cloud

is not included.

23

<https://manual-hub.com/>

Status light 3 – Current status of Dosell

Green Ready to dispense the next sachet.

Yellow The sachets on the dose roll start to run out and need to be refilled soon.

Red An error has occurred. Check the type of error by connecting to Dosell with the app.

8. Troubleshooting and FAQs

Error Possible reason Action

The sachet was delivered closed, not cut.

Dosell beeps and the compartment pulsates green, even though no bag is in the compartment.

A sachet was ejected, but no sound or light signal came.

Dosell did not manage to cut a sufficiently

accurate position. This can occur due to a

reading error or that the bag is very lumpy.

Sensor error that detects if a sachet is in the

compartment.

The calibration of the sensor that detects if there is a bag in the compartment might have failed when Dosell was started.

<https://manual-hub.com/>

No action in the app or Dosell – the sachet must be demolished manually.

Look for visible dirt or objects inside the compartment. In this case, carefully wipe it off. If it does not help, contact support.

Turn off and on

Dosell, see page 16. It is very important that the bag compartment is empty when Dosell is started.

Errors Possible reason Action

The sachet was delivered at the wrong time.

Red pulsating light in the compartment.

The app cannot find the Dosell device.

It blinks inside

Dosell (white light).

1. Reading the bag has failed. The bag might be wrinkled or the pressure on the bag's label is poor.

2: The clock is not working properly.

Dosell warns of an event that requires action.

1: The Bluetooth connection has failed.

2: Dosell is turned off.

Dosell is photographing the next sachet to be dispensed.

25

<https://manual-hub.com/>

If the pressure is poor on several sachets on the dose roll, this roll cannot be used and needs to be removed manually. If the print is difficult to read

manually – contact your supplier of sachets.

Connect to Dosell with the app and control the clock. Make sure your mobile phone's clock works before connecting.

Connect to Dosell with the app for more information.

Control that Bluetooth is active on the mobile phone that will connect to Dosell.

Make sure Dosell is turned on.

This is completely normal and can last for 30 seconds. If it

continues to flash in more than a minute, contact support.

9. Care and Maintenance

All outer parts of Dosell are made of plastic and possible to clean by wiping with a slightly damp cloth and mild detergent, eg. washing-up liquid, or 70% ethanol liquid. It is recommended to clean Dosell rarely not to affect the material, for example when switching to new user. Always wipe with a dry cloth. Cleaning or any other maintenance is required for Dosell to work.

10. Transport and storage

10.1 Move and transport Dosell

Dosell is easily moved and possible to transport to another location. If it is frequently moved between the same locations, it facilitates having a bracket mounted in each location. It is also possible to use Dosell's table stand (sold separately).

When moving Dosell it must always be switched off. Any sachets inside Dosell that has to be taken during the transportation must be removed. Follow the instructions below to transport Dosell to another location.

1. Connect to Dosell, see page 16.
2. Select Eject Dose Roll in the app's main menu and follow the instructions.
3. Roll the dose roll together and keep it on hand during the move. Take any doses as usual, as indicated on the labels.
4. Close the door, see page 17.
5. Turn off Dosell by pressing and holding the On / Off button for at least 8 seconds. An audio signal confirms that Dosell is switched off.
6. Pull out the adapter and remove Dosell from the bracket.
7. Unscrew the bracket from the wall and bring it with you to mount it in a new location. This does not apply if a separate bracket is available at the new location, or if table stands are used.
8. Make sure to protect Dosell and its belongings from moisture during the transportation. The original box with associated interior is preferably used to transport Dosell.
9. Unpack Dosell at the new location and hang it up on a bracket. If the bracket needs to be installed in the new location, see instructions on page 12.
10. Dosell is ready to be started and loaded with sachets again, see instructions on pages 14–18.

10.2 Long-term storage

If Dosell is to be stored for a long time, turn it off and remove the adapter and the batteries from the battery compartment. Please keep Dosell in the original packaging.

11. Additions and consumption details

Find the the latest information about additional products for Dosell or order online at www.dosell.com.

Pay attention!

Never use other additional products with Dosell than those included when buying or that are available to purchase from Dosell AB.

11.1 Tape for adding sachets

The tape is supplied on sheets with 39 strips on each. One strip is used each time a new dose roll is to be inserted and combined. One sheet is included with each new Dosell, and more can be purchased on Dosell's website.

11.2 Bracket

One bracket is included with the purchase of Dosell. Extra brackets are purchased on the website of Dosell.

11.3 Table frame

The table frame is used to be able to have Dosell standing

instead of hanging on the wall. This is not included when

purchasing Dosell, but is ordered separately from the

website of Dosell. If the table frame is used, it must always

be on a surface that is completely flat and horizontal.

11.4 Adapter for connection

Use only the accompanying adapter with Dosell. A damaged adapter should always be replaced with a new one, which is ordered on Dosell's website.

A green light on the adapter gives a signal when connected to a wall outlet. If the adapter is pulled out of the wall, it will take up to three minutes before the green light turns off completely. This is no sign of error.

Product	
Model	D36700C-01-SE
Serial number	Se etikett på produktens baksida
Size (BxHxD)	312 x 272 x 132 mm
Weight (without batteries)	1,9 kg
Size of the package	375 x 315 x 185 mm
Life expectancy and accompanying additions	At least 3 years
Recommended maximum storage time	1 year
Permitted environment during transport and storage	Temperature: between – 25°C and +70°C Humidity: between 10% and 90% (no condensation) Air pressure: between 500 hPa and 1060 hPa
Tillverkare	Dosell AB Grev Turegatan 11A, 4 stairs. 114 46 Stockholm

Electronics	
Supply voltage	12 VDC
Adapter	Globtek WR9QE1500C9PCIMR6W
Max. power	15 W
Power in sleep mode	< 0,5 W
Batteries	6 x AA, 1.5 V (alkaline)

App and communication	
Bluetooth	4.0
GSM	<p>Frequencies 850/900/1800/1900 MHz</p> <p>GPRS multi-slot class 12/10 GPRS</p> <p>mobile station class B. Fullfills GSM</p> <p>fase 2/2+</p> <p>–Class 4 (2 W @ 850/900MHz)</p> <p>–Class 1 (1 W @1800/1900MHz)</p>
Operating system for Dosell app	<p>iOS: 11 or later version</p> <p>Android: 6.0 or later version</p>

<https://manual-hub.com/>

13. Återvinning av produkt och tillbehör

If terminating a Dosell subscription, the Dosell unit including the additional products included in the purchase must be returned to Dosell AB. Instructions for return are found at www.dosell.se.

Left-over tape should not be returned but sorted as flammable. Any additions purchased does not have to be returned. The power adapter is sorted as electronic waste, the table frame as hard plastic and the bracket as metal. Note that this information only applies if local regulations do not say otherwise.

14. Classification and regulatory information 14.1 CE-marking

Dosell is CE-marked as a medical device (MDD class I). The entire Dosell unit is classified as an applied part ("Applied Part") type BF, according to IEC 60601-1.

<https://manual-hub.com/>

15. Explanation of symbols

15.1 Symbols on labels

The serial number label is located on the back of Dosell. The packaging label is located on one of the short sides of the package.

	<p>Read the manual</p> <p>The user manual must be read and understood in its entirety before Dosell is used.</p>
	<p>Sensitive to moisture</p> <p>The device should not be exposed to water or humid environments.</p>
	<p>Fragile</p> <p>The unit contains fragile components and must be handled carefully.</p>
	<p>Storage temperature limitation</p> <p>Specifies the allowed temperature range during storage.</p>
	<p>Storage of humidity</p> <p>Specifies the permissible humidity range for storage..</p>
	<p>Atmospheric Pressure Restriction on Storage</p> <p>Indicates the allowable atmospheric pressure range during storage.</p>
	<p>IIP classification</p> <p>Protected from touch by fingers and objects greater than 12 millimeters.</p>
	<p>Type BF applied part</p> <p>Dosell is classified as type BF applied part, according to IEC 60601-1.</p>
	<p>Model Designation</p> <p>Specifies the model designation of Dosell.</p>
	<p>Serial number</p> <p>Specifies the serial number of the Dosell device.</p>
	<p>Batch number</p> <p>Specifies which manufacturing batch is included in the Dosell unit.</p>

Type of batteries	Specifies the type of batteries to be used in Dosell.
Recycling of electronic waste	The symbol shows that Dosell contains electronic equipment and must be recycled as electronic waste.
Manufacturer	Indicates who manufactures Dosell.

Dosell Operation Manual

Art. № 37154 Edition

1.3 Published

2018-12-05

<https://manual-hub.com/>

Dosell AB

Grev Turegatan 11A, 4 stairs


114 46 Stockholm

www.dosell.se

32

<https://manual-hub.com/>

Documents / Resources

	<p>Dosell D36700C-01-SE Medicine Dispensing Robot [pdf] User Manual D36700C-01-SE Medicine Dispensing Robot, D36700C-01-SE, Medicine Dispensing Robot, Dispensing Robot, Robot</p>
---	--

References

-  [Manual-Hub.com - Free PDF manuals!](#)
- [User Manual](#)

Manuals+, Privacy Policy

This website is an independent publication and is neither affiliated with nor endorsed by any of the trademark owners. The "Bluetooth®" word mark and logos are registered trademarks owned by Bluetooth SIG, Inc. The "Wi-Fi®" word mark and logos are registered trademarks owned by the Wi-Fi Alliance. Any use of these marks on this website does not imply any affiliation with or endorsement.