



DOSATRON D14TMZ5 14 GPM Viscous Injection Seal Kit User Manual

[Home](#) » [DOSATRON](#) » DOSATRON D14TMZ5 14 GPM Viscous Injection Seal Kit User Manual 

DOSATRON D14TMZ5 14 GPM Viscous Injection Seal Kit



Contents

- 1 [This kit contains](#)
- 2 [Kit Contents](#)
- 3 [Instructions](#)
- 4 [CUSTOMER SUPPORT](#)
- 5 [Documents / Resources](#)
 - 5.1 [References](#)
- 6 [Related Posts](#)

This kit contains

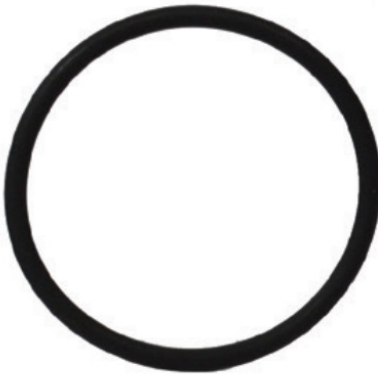
(1) JDI121	Plunger seal
(1) JDI122	Injection stem o-ring
(1) JDI100	Sleeve o-ring
(1) PJDI118	Check valve assembly

Kit Contents

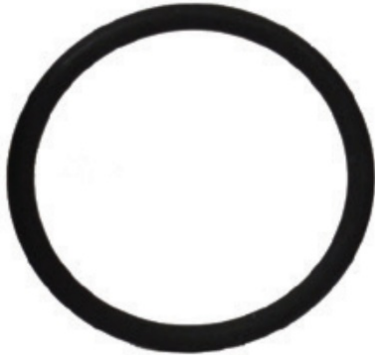
- **PJDI118:** Check valve assembly



- **JDI100:** Sleeve o-ring



- **JDI122:** Injection stem o-ring



- **JDI121:** Plunger seal



We recommend cleaning all parts with warm soapy water and a toothbrush before installing the new parts. Water normally lubricates the parts, but you may use silicone on the o-ring to facilitate insertion. Check valve may be taken apart and cleaned in between maintenance to remove particles.

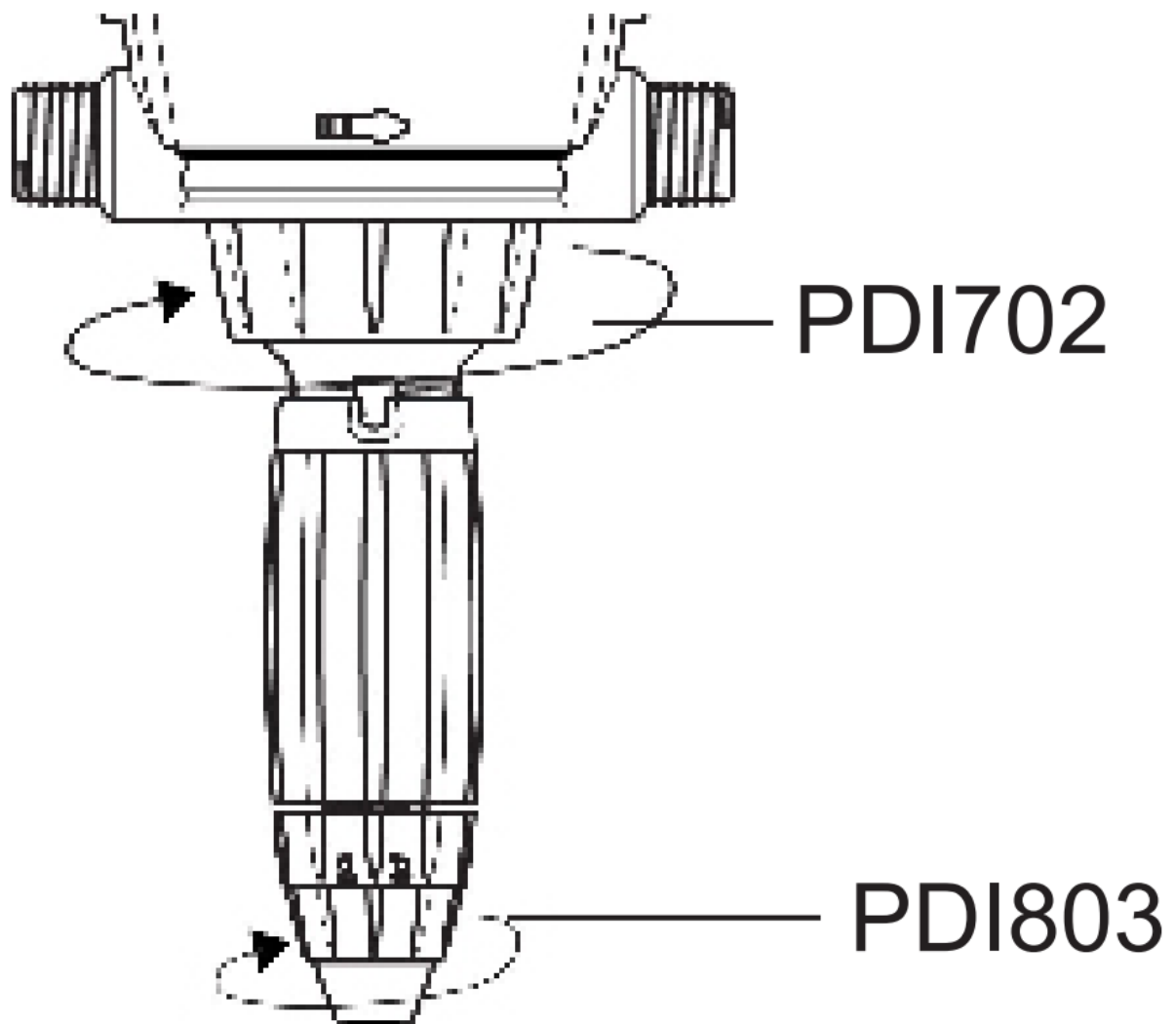


CAUTION: Parts may contain concentrated chemicals. The use of Proper Protective Equipment is recommended when performing maintenance.

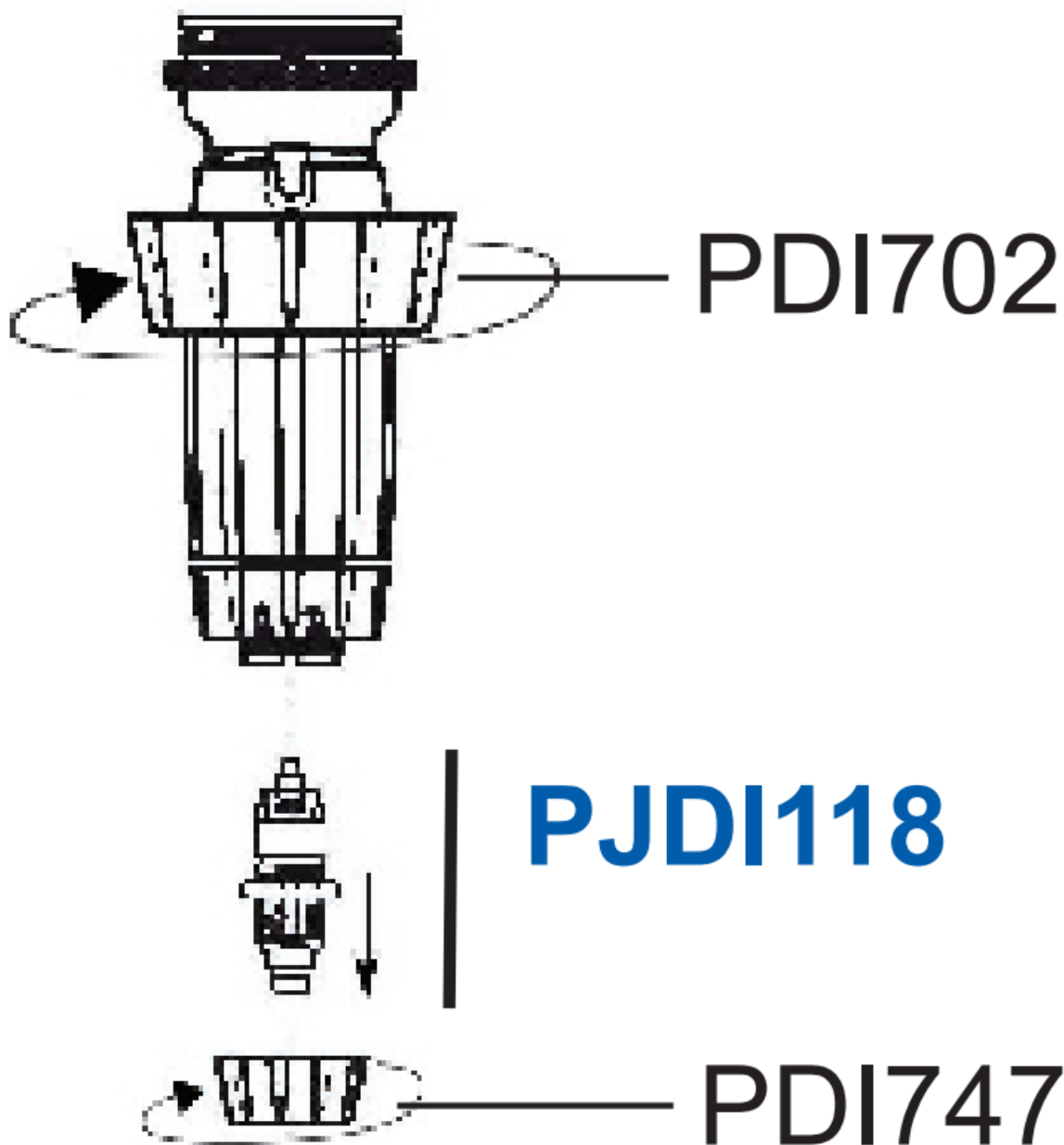
Instructions

(Parts included in kit noted in blue)

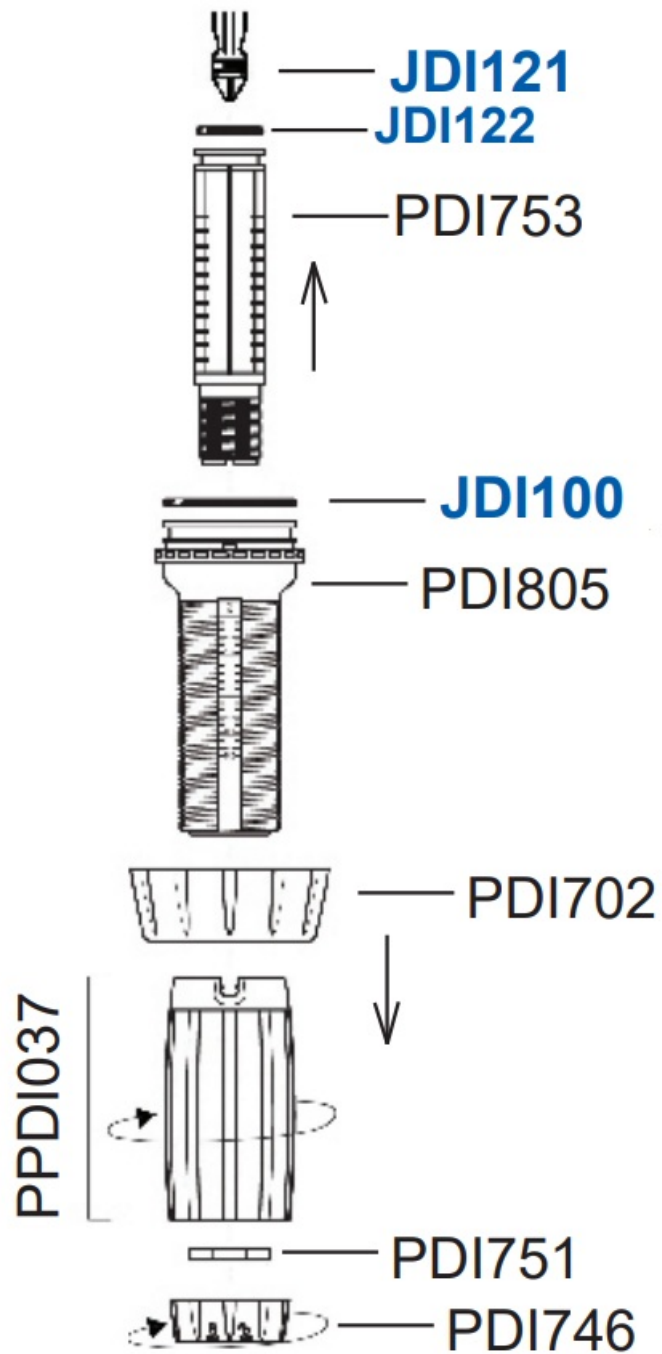
1. Unscrew injection stem assembly nut (PDI702) and set aside. Pull down on stem to detach from body of unit.
Unscrew hose nut (PDI803).



2. Unscrew check valve nut (PDI747) and pull out check valve assembly ([PJDI118](#)). It will come out in one piece. Discard.

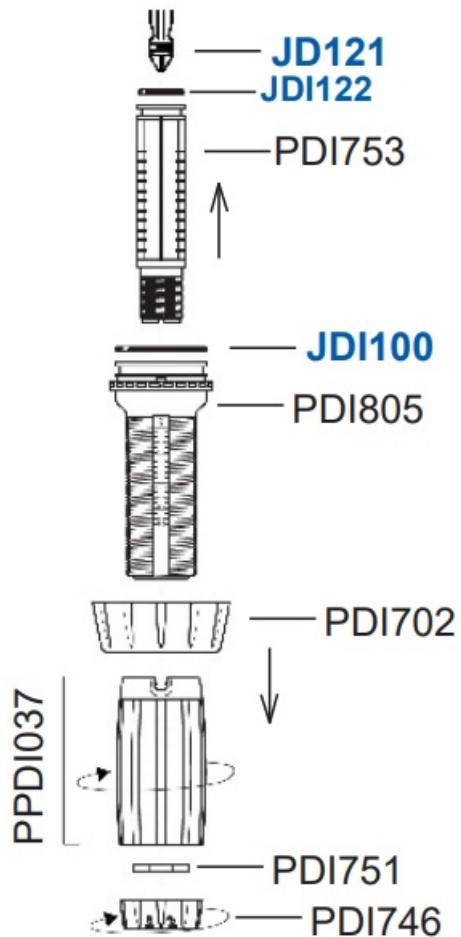


3. Unscrew locking nut (PDI746), remove “C” clamp (PDI751) by slightly spreading the opening and gently sliding it down over the threads. Unscrew adjusting sleeve (PPDI037). Holding the sleeve (PDI805), push up on the threaded part of the injection stem (PDI753) and slide it out of the sleeve from the top. Replace both sleeve and injection stem o-rings ([JDI100](#) and [JDI122](#)).



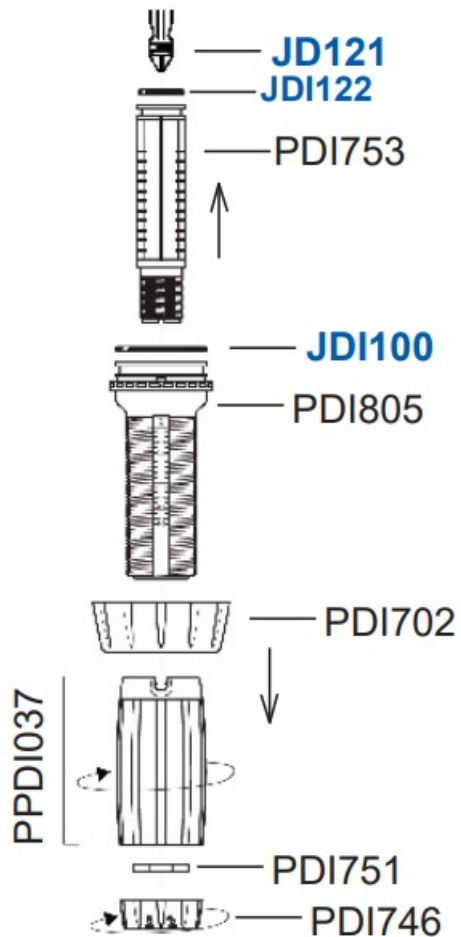
To remove o-ring easily without tools, squeeze it on either side to raise the seal, then slide it over the groove

4. Remove and replace plunger seal (**JDI121**), using same method as above.



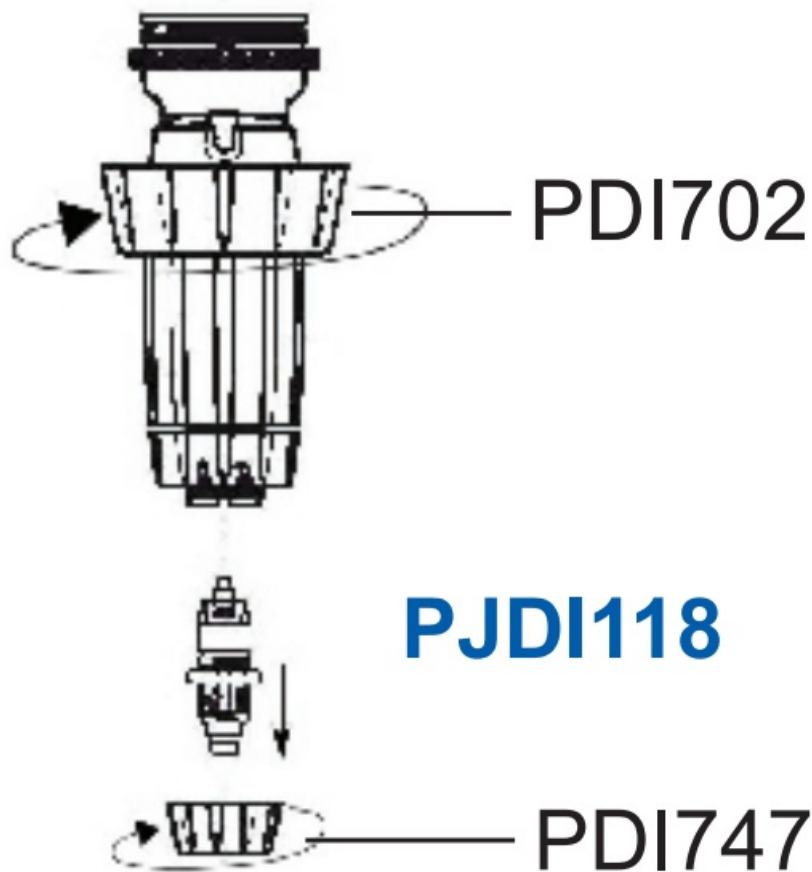
Using tools could damage the plunger and affect the injection rate

5. Slide the injection stem (PDI753) down into the sleeve (PDI805), making sure the small key located on the bottom inside of the sleeve is properly aligned with the longest groove on the white stem. Holding the black sleeve, pull down on the white stem as far as it will go. Screw adjusting sleeve (PPDI037) back onto the sleeve (PDI805).



Reinstall “C”clamp by sliding it gently over the thread at the bottom of the white stem. Rotate clamp until it clicks into place. Screw locking nut (PDI746) back on. (See back cover for steps 6 and 7.)

6. Insert new check valve (**PJDI118**) at the bottom of the white stem, making sure that the 4 white keys on the check valve seat next to the 4 black keys on the bottom of the stem. Screw check valve nut (PDI747) back on.



7. Push complete injection stem assembly in position at the bottom of the blue body, making sure desired scale is facing front of injector. Keys at the top of the black sleeve should slide into the slots at the bottom of the body. Slide injection stem nut (PDI702) up the sleeve and screw back on. Insert hose back onto the bottom of the check valve barb (PJDI118). Screw hose nut (PDI803) back on.



To ensure hose is air-tight, you may choose to carefully cut the top of hose before reinserting.

CUSTOMER SUPPORT

2090 Sunnydale Blvd.
Clearwater, FL 33765
1-800-523-8499 • 1-727-443-5404

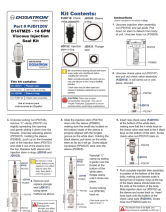
www.dosatronusa.com



DOSATRON®

An Ingersoll Rand Business

Documents / Resources



[DOSATRON D14TMZ5 14 GPM Viscous Injection Seal Kit \[pdf\] User Manual](#)
PJDI120V, D14TMZ5 14 GPM Viscous Injection Seal Kit, D14TMZ5, D14TMZ5 Viscous Injection Seal Kit, 14 GPM Viscous Injection Seal Kit, Viscous Injection Seal Kit, Viscous Injection, Seal Kit

References

Manuals+.