



DOSATRON D132 Mega-Flo Injector User Guide

[Home](#) » [DOSATRON](#) » DOSATRON D132 Mega-Flo Injector User Guide 

Contents

- [1 DOSATRON D132 Mega-Flo Injector](#)
- [2 CAUTION](#)
- [3 RECOMMENDATIONS](#)
- [4 D132](#)
- [5 INSTALLATION HINT](#)
- [6 Documents / Resources](#)
- [7 Related Posts](#)



DOSATRON D132 Mega-Flo Injector



Congratulations on your new Dosatron. Please read the following important information.

CUSTOMER SERVICE

(NORTH & CENTRAL AMERICA) DOSATRON INTERNATIONAL, LLC 2090 SUNNYDALE BLVD.
CLEARWATER – FL 33765- USA Tel. 1-727 -443-5404 / 1-800-523-8499 – Fax 1-727-44 7 -0591 Site web:
www.dosatronusa.com This document does not form a contract actual engagement on the part of Dosatron International and is for information only. Dosatron International reserves the right to alter product specification or appearance without prior notice. DOSATRON INTERNATIONAL S.A.S 2019

CAUTION

- When connecting a DOSATRON either to the public water supply or to its own water source, you must respect the regulations in force concerning the protection of the source i.e. backflow prevention, etc.
- Contact local authorities for requirements of backflow prevention.
- When installing, operating, and maintaining the DOSATRON water-powered metering pump, keep safety considerations foremost. Use proper tools, protective clothing, and eye protection when working on the equipment and install the equipment with a view toward ensuring safe operation.
- Follow the instructions in the manual and take additional safety measures appropriate to the liquid being pumped and the temperature of the water that powers the DOSATRON. Be extremely careful in the presence of hazardous substances (e.g. corrosives, toxins, solvents, acids, caustic, flammables, etc.).
- Before applying any aggressive chemicals, please consult your distributor to confirm compatibility with the dosing pump. Hand tightens. No tools are needed.

RECOMMENDATIONS

DO NOT USE THIS UNIT WITHOUT A 200-120 MESH [80-130 MICRON] WATER FILTER* OR YOUR WARRANTY WILL BE VOID.

The 200-120 mesh [80-130 micron] water filter (sold separately) protects your unit from debris in the water that causes scoring to the piston and housing.

KNOW YOUR WATER FLOW! GRADUALLY TURN ON THE WATER. COUNT THE NUMBER OF CLICKS IN 15 SECONDS. DO NOT EXCEED 46 CLICKS.

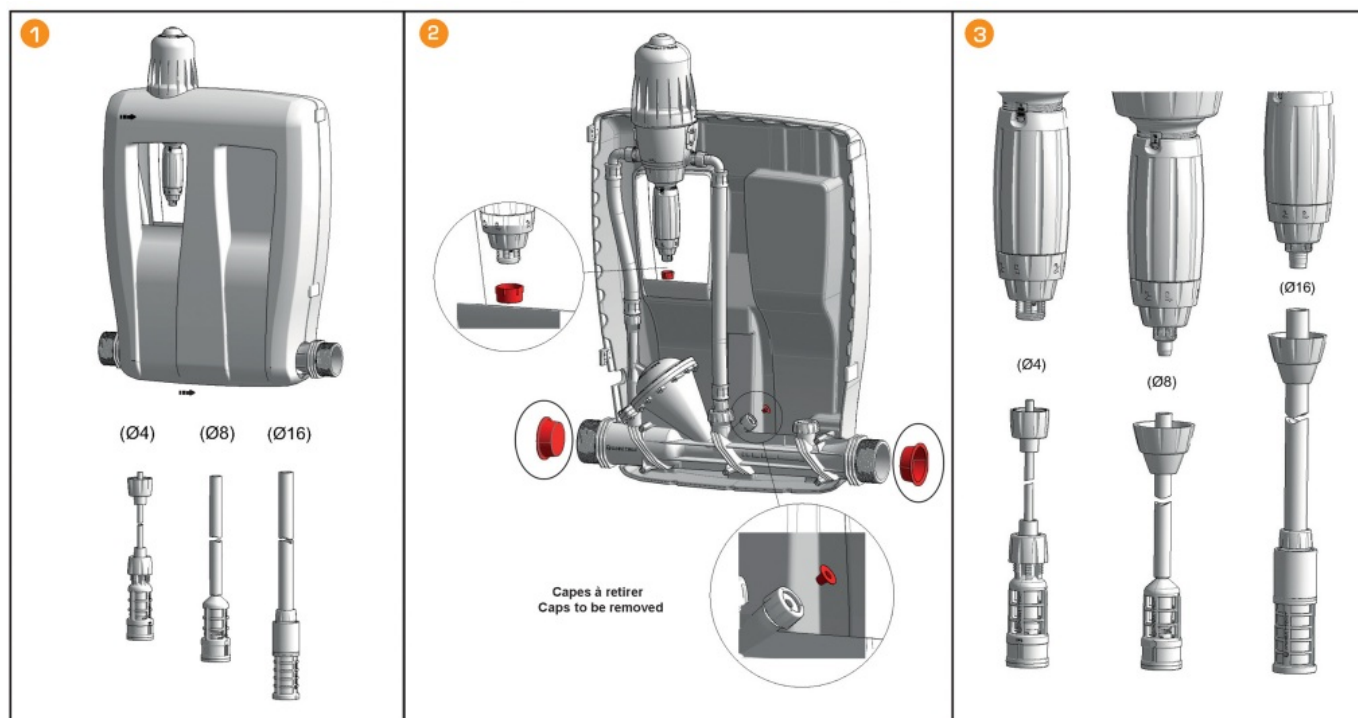
CLICK CHART

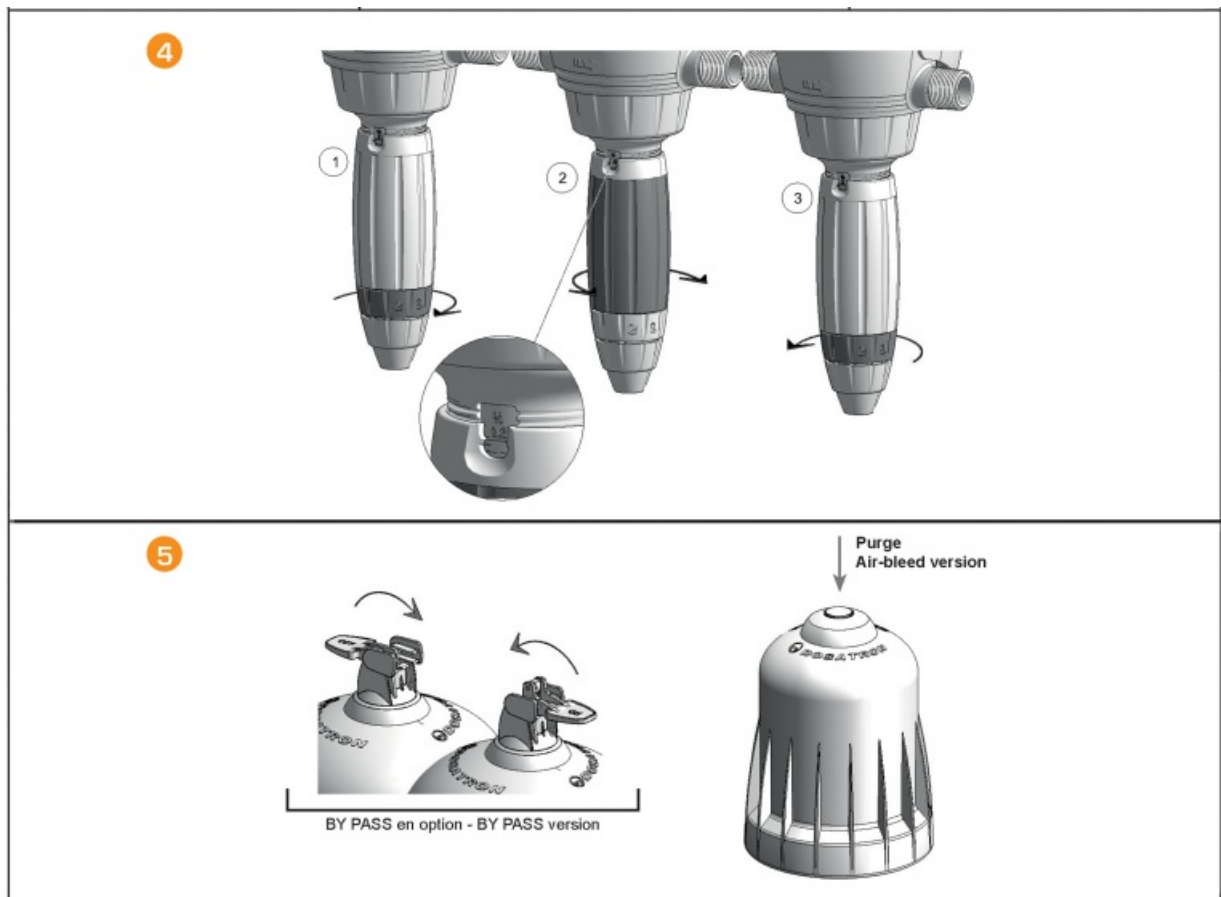
Clicks/15 sec	gpm	l/h
10	28	6000
12	33,6	8000
16	45	10200
32	90	20400
46	132	30000

MAXIMUM PRESSURE 87 PSI [6 bar]

D132

Please read the following important information.





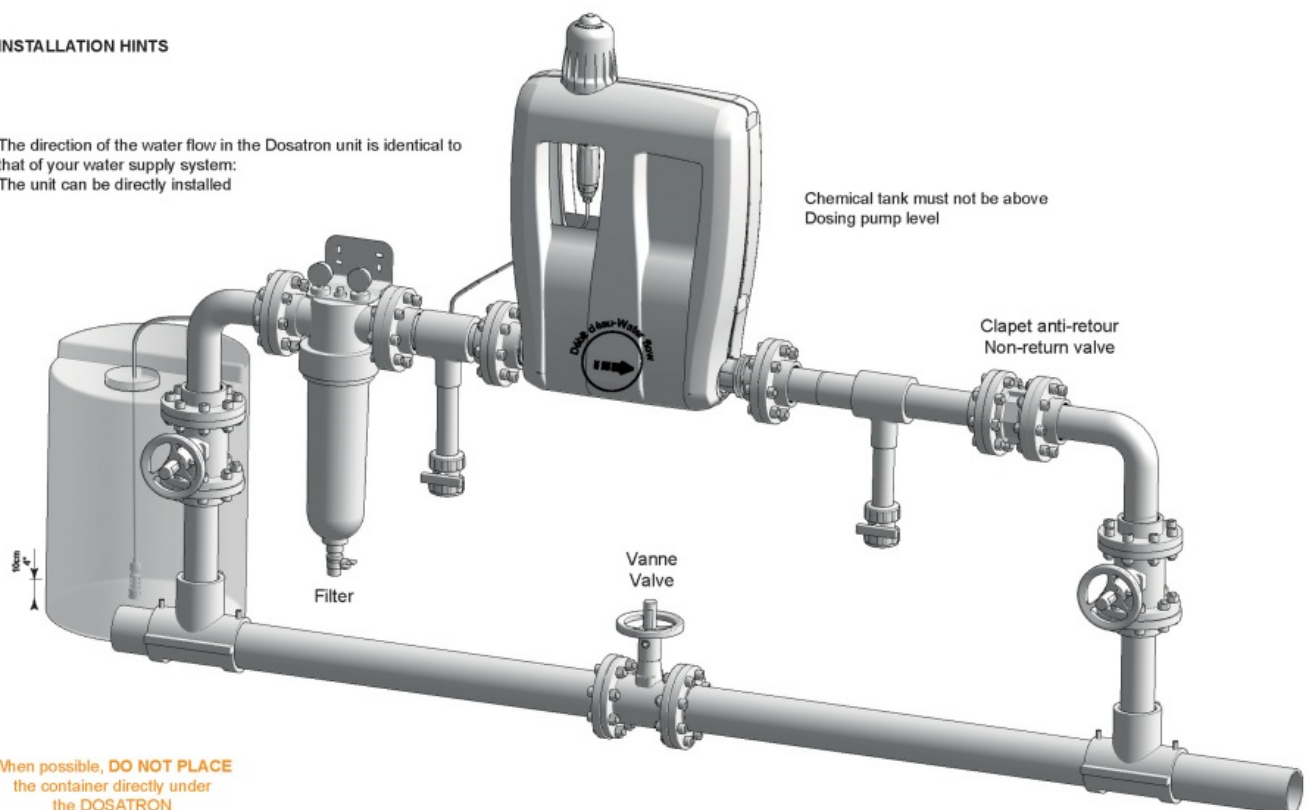
Maximum: 45 clicks/15 sec.

INSTALLATION HINT

The direction of the water flow in the Dosatron unit is identical to that of your water supply system: The unit can be directly installed Chemical tank must not be above Dosing pump level

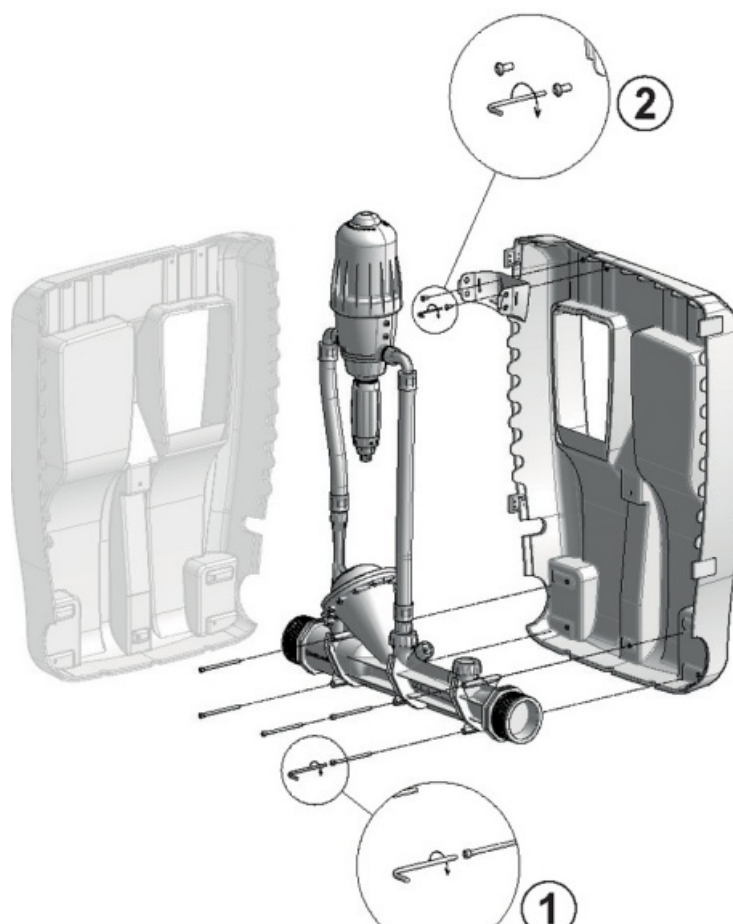
INSTALLATION HINTS

The direction of the water flow in the Dosatron unit is identical to that of your water supply system:
The unit can be directly installed

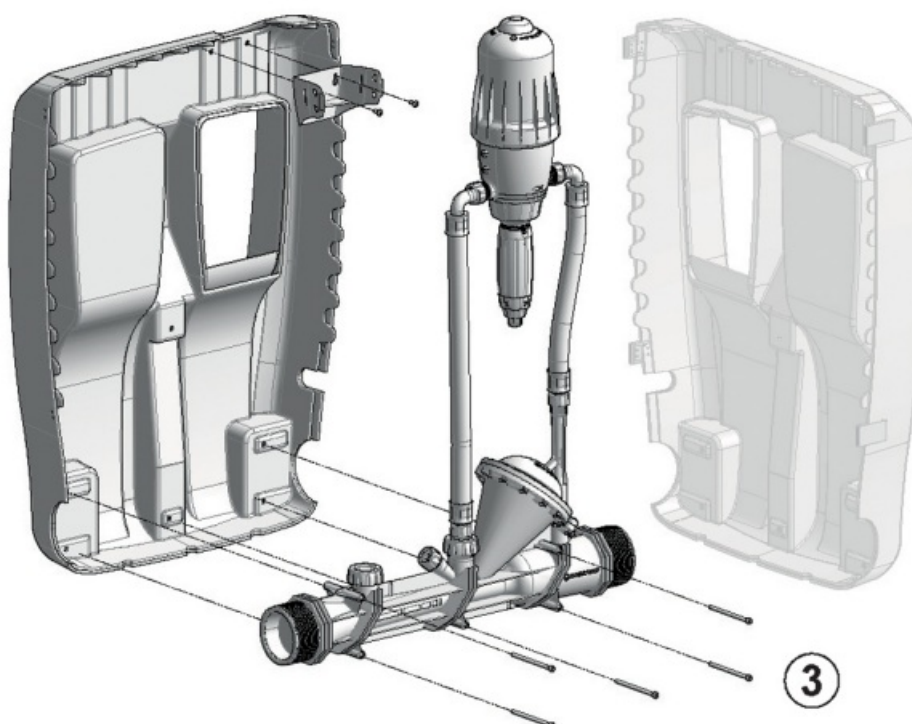


The water flows in the opposite direction:

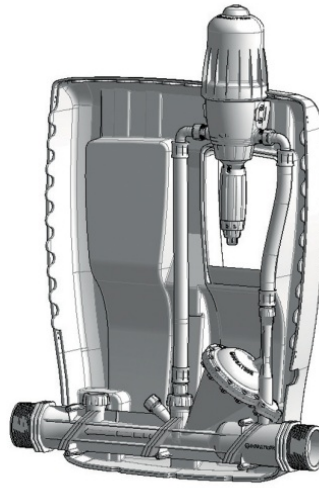
- Unscrew the Dosatron unit (1)



- Screw it again at the other end of the casing (3)



- The unit can be directly installed



Documents / Resources

<p>DOSATRON A TITAN COMPANY</p> <p>QUICK START UP D132 1.32 US gpm - 50 m³/h</p> <p><small>Congratulations on your new Dosatron. Please read the following important information.</small></p> <p><small>CUSTOMER SERVICE DOSATRON, INC. 1000 N. 10TH AVE., SUITE 100 MILWAUKEE, WI 53233 TEL: 414.224.1100 WWW.DOSATRON.COM</small></p> <p>D132</p>	<p>DOSATRON D132 Mega-Flo Injector [pdf] User Guide D132 Mega-Flo Injector, D132, Mega-Flo Injector, Injector</p>
--	---