



dormakaba ESA300 Full Breakout Automatic Sliding Door with ESA II Controller Installation Guide

[Home](#) » [dormakaba](#) » dormakaba ESA300 Full Breakout Automatic Sliding Door with ESA II Controller Installation Guide 

Contents

- 1 dormakaba ESA300 Full Breakout Automatic Sliding Door with ESA II Controller
- 2 Tools Required
- 3 Components – Overview
 - 3.1 Header to Jamb Assembly
- 4 Assembly
 - 4.1 Sidelight mounting
 - 4.2 Securing the Sidelight
 - 4.3 Hanging the panel
 - 4.4 Vertical Alignment for SX panel
 - 4.5 “SX” Panel Centerline Adjustment & “SO” Bottom Latch Installation
- 5 Glazing
- 6 Adjustment of the Breakout-Unit
- 7 Adjustment of the Roller Catch
- 8 Adjustment of the End Stops
- 9 “SX” and “SO” Panel Breakout Adjustment
- 10 “SO” Interlock Clip Adjustment
- 11 Documents / Resources
 - 11.1 References
- 12 Related Posts



dormakaba ESA300 Full Breakout Automatic Sliding Door with ESA II Controller



Tools Required

- **Screwdrivers**

Small Straight (Flat Blade) – for Terminal Block wiring
#2 Phillips (Crosspoint) – for various #8, #10, and #14 screws

- **Wrenches / Sockets**

7/16" – for #1/4-20 Hex Head bolts attaching header to jambs
1/2" (13mm) – for #5/16 Hex Head bolts attaching end stops and operator parts 15/16" wrench – for carrier and anti-rise roller adjustment

- **Allen Wrenches**

3mm – for "SX" & "SO" roller catch adjustment 1/8" – for "SO" arm stop & "SX" bottom pivot 5/32" – for "SO" top pivot
5mm (3/16") – for "SO" arm pivot screw
7/32" – for "SX" breakout adjustment
5/16" – for carrier and anti-rise roller adjustment

- **Electric Drill with the following drill bits –**

9/64"(or #28) – for installing sensors & "SO" bottom roller stop
5/32" (or #22) – for installing #10 sheet metal screws into adjacent storefront 13/64" (or #7) – for installing #14 sheet metal screws into adjacent storefront 1/4" – for clearance holes in jambs
82 degree Countersink

- **Impact Drill with the following masonry bits –**

1/4" – for #10 screw anchors 5/16" – for #14 screw anchors

- **Level – suggested 4' minimum**

Step Ladder – 4' or 6'

Tape Measure

Caulking and Application Gun

Electrical Wire Strippers /Cutters – for sensor wiring Grease [to hold bottom guide block on shaft] BEA

Universal Remote Control – for adjusting sensors

- **Suggested Fasteners Required – (Not supplied)**

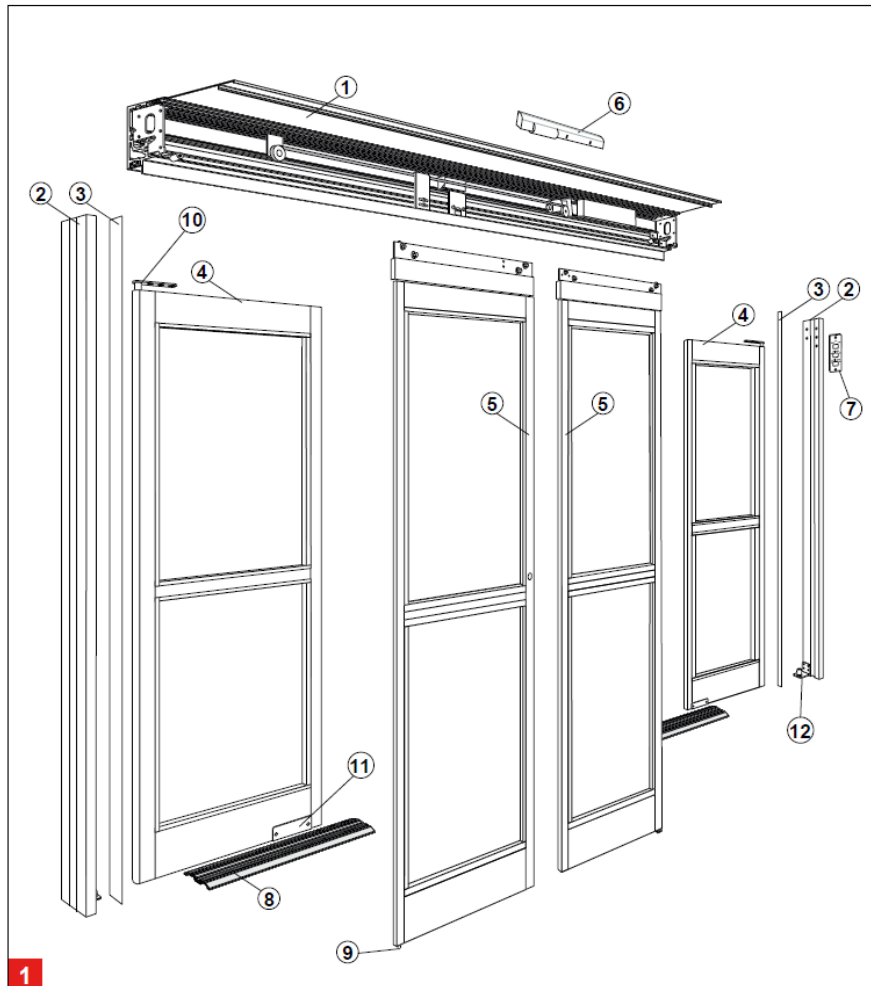
#14 X 2-1/2" PHSMS (Pocket Jamb) #14 X 3" FHSMS (Tube Jamb) Optional Anchors for masonry

- Threshold Attachment Screws

#10 X 1-1/2" FHSMS Optional Anchors for masonry Header Attachment Screws

#14 X 1-1/2" HHSMS #14 Flat Washer

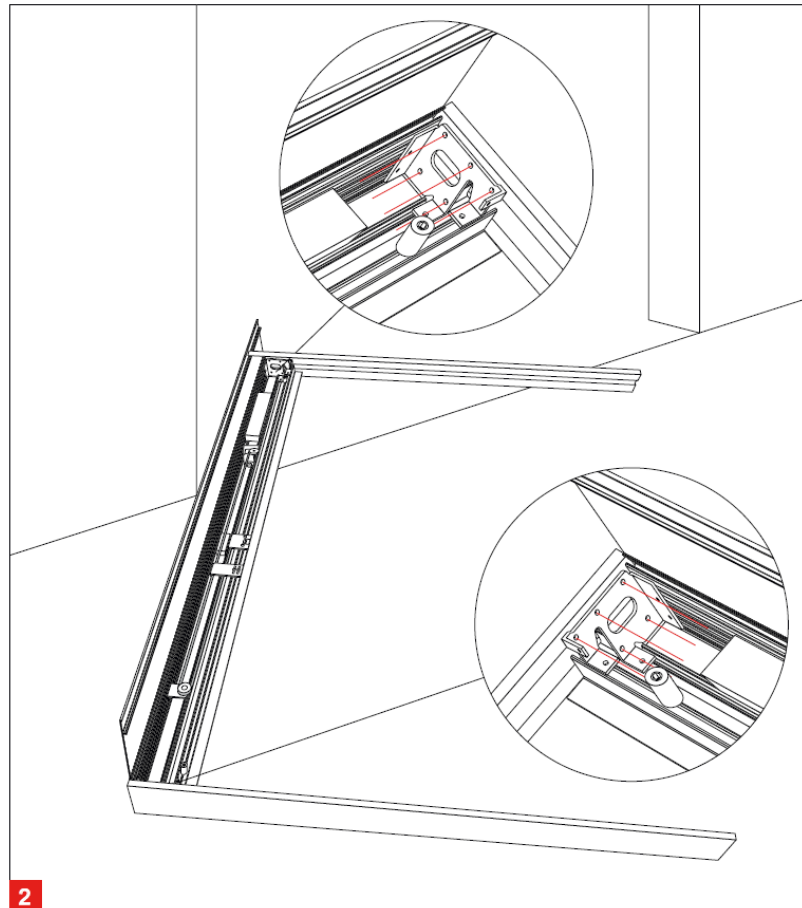
Construction Shims – for squaring door frame in opening



Components – Overview

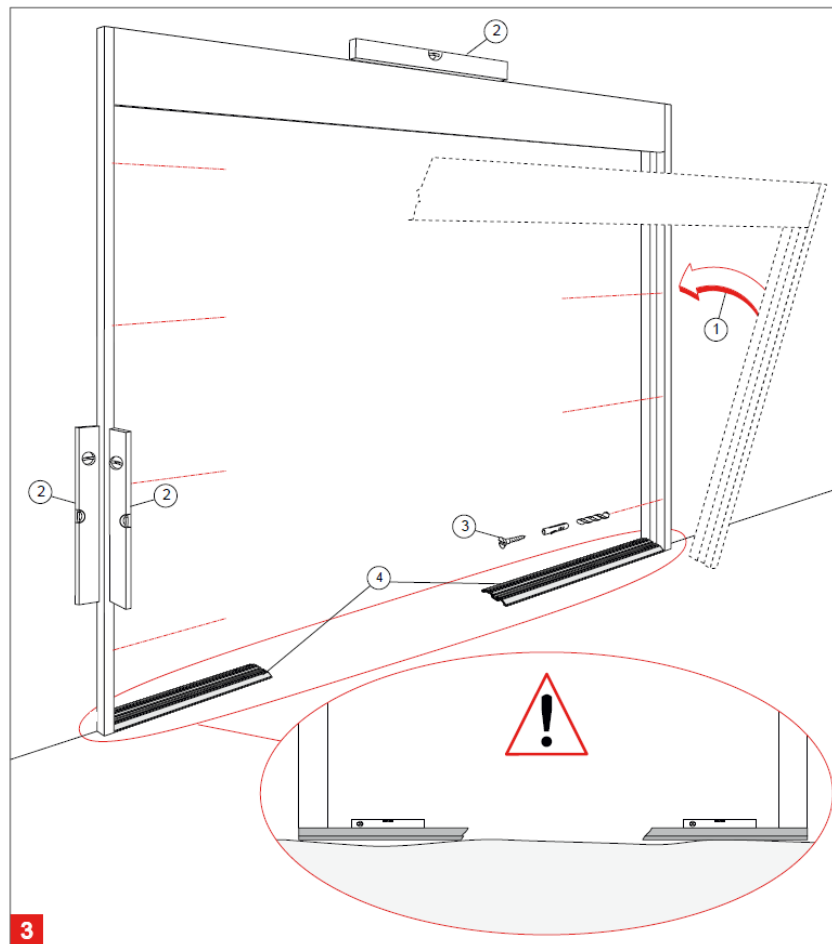
1. Operator Unit
2. End Tube (Jamb) Extrusions
3. Cover Extrusion
4. Sidelight
5. Sliding Panel
6. Motion
7. Detector Program-Panel
8. 8 Floor Rail
9. Floor Guide
10. Bearing Pivot
11. Latch Device

12. Bearing Pivot



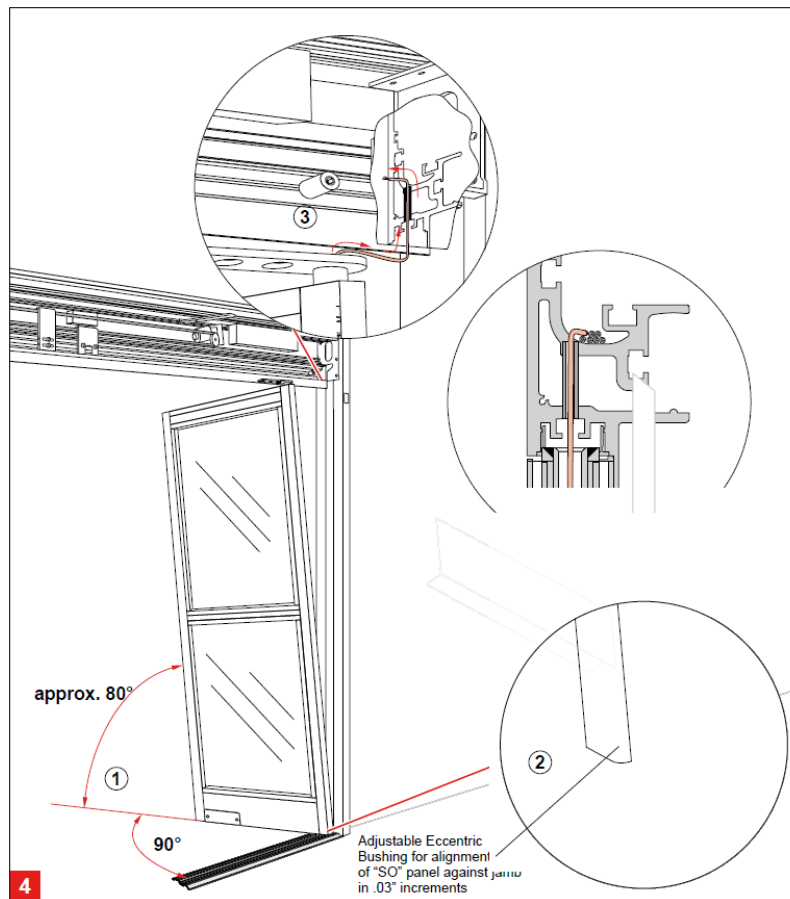
Header to Jamb Assembly

Fasten the header unit to the jambs using (5) 1/4-20 x 1 hex bolts per side. (7/16 socket/wrench required.)



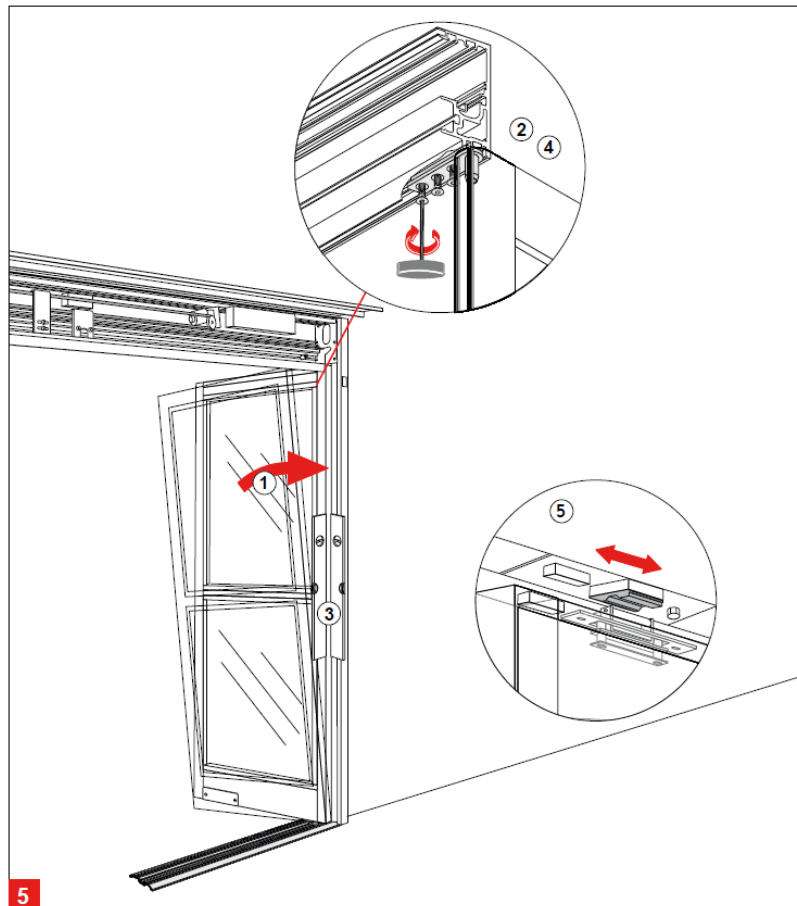
Assembly

1. Place the header & jamb assembly into the rough opening.
2. Level all sides and shim as required.
3. Fasten assembly into rough opening, after verifying unit is level and plumb in all directions.
4. Place floor track in position.
Find highest floor elevation and shim accordingly.



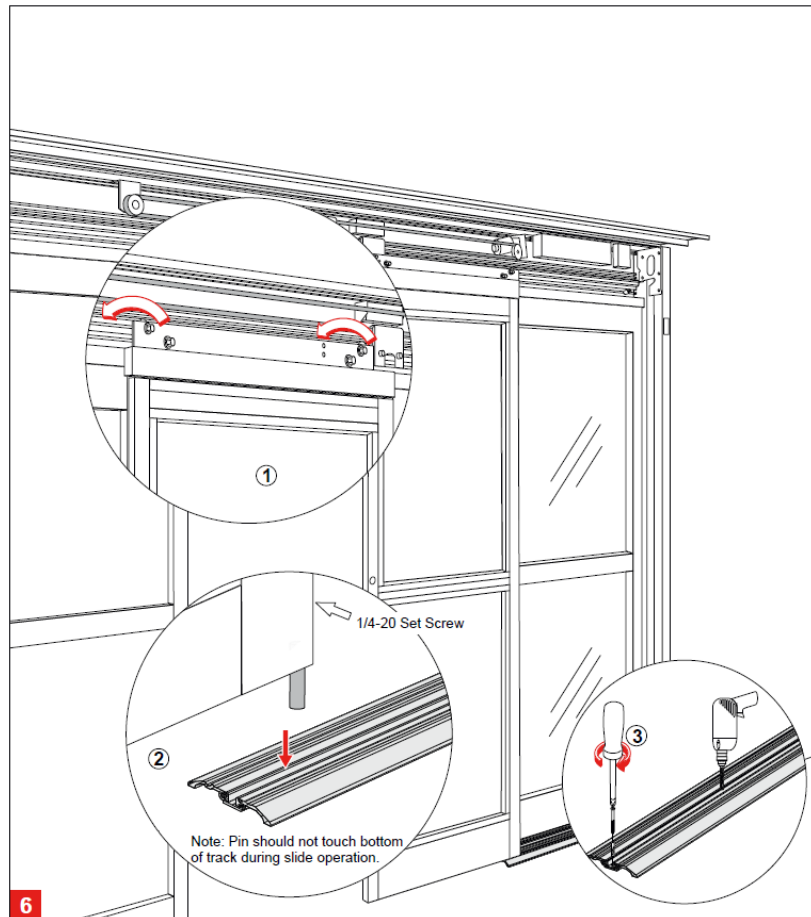
Sidelight mounting

1. Align panel 90° to the track and 80° to the vertical jamb. Place panel onto bottom pivot mounted on the jamb.
2. Insert Beam wires into top pivot, bushing and vertically through the header.



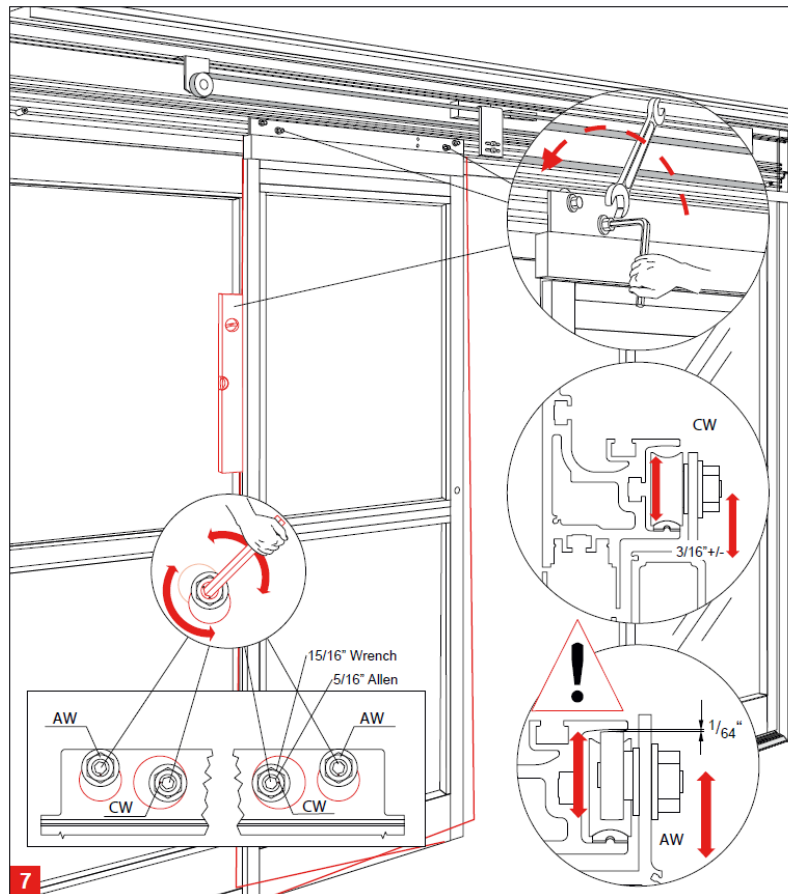
Securing the Sidelight

1. Push "SO" Panel vertically to align with jamb.
Attention: Be careful not to damage the wires.
2. Rotate upper "SO" arm and lightly fasten to screw plate located in header.
3. Align and plumb "SO" Panel.
4. Tighten (3) 1/4-20 x 5/8 fasteners in "SO" top pivot, securing "SO" Panel to header using 5/32" Allen wrench. 5
Loosen fastener. Close "SO" panel and align "SO" magnet/latch sub-assembly. Tighten fastener using 1/2"
socket/wrench. For roller catch tension adjustment, see Page 13.



Hanging the panel

1. Lift panel and place rollers onto roller track in header.
2. Find the highest spot along track. Place small screwdriver below pivot, loosen set screw and re-tighten when bottom guide pin reaches screwdriver (1/8" Allen wrench required).
3. Align track with jamb. Fasten and anchor bottom track to floor.

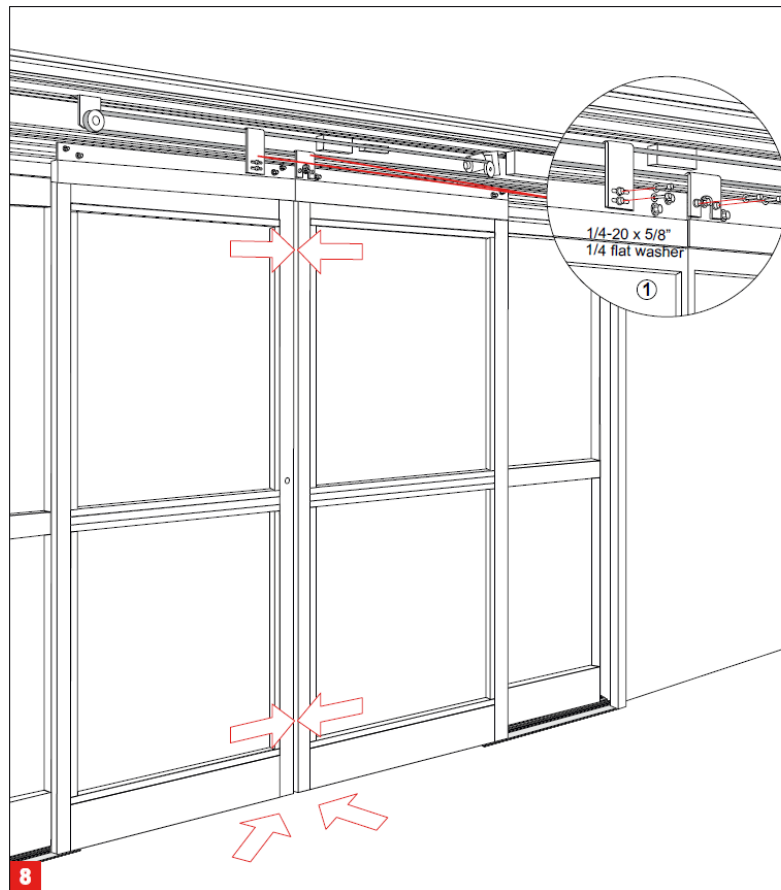


Vertical Alignment for SX panel

Using the eccentric carrier wheel (CW), and the anti-riser wheel (AW), level the sliding panel. Tighten hex nuts to secure the adjustment.

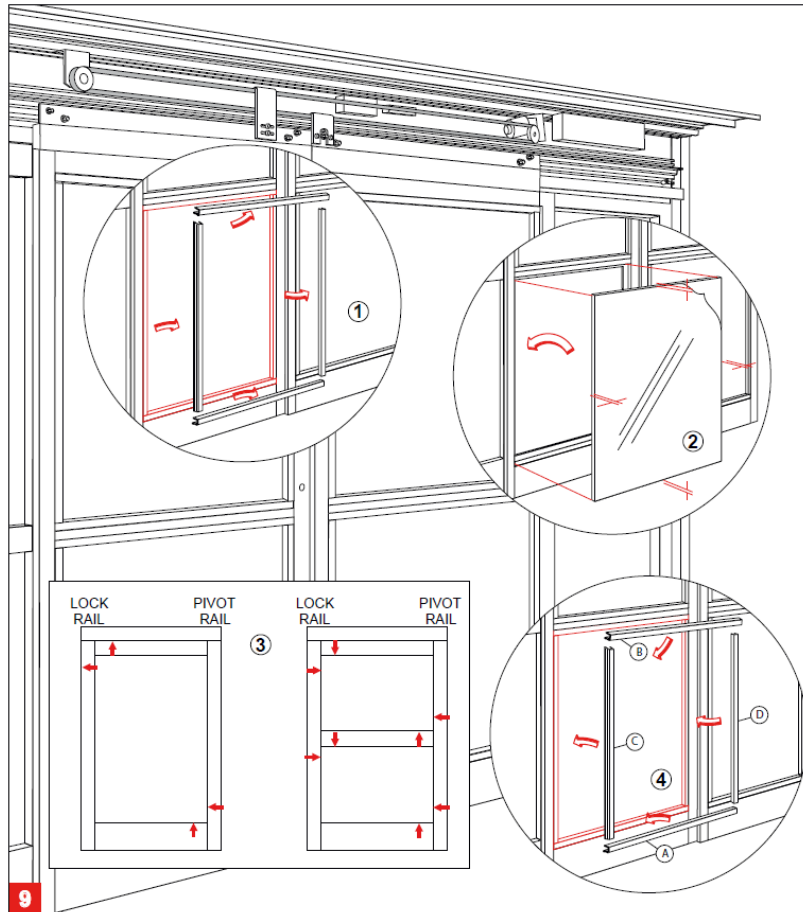
Adjustment of the anti-riser roller:

The anti-riser roller should not contact the top track anywhere along the slide path of the door.



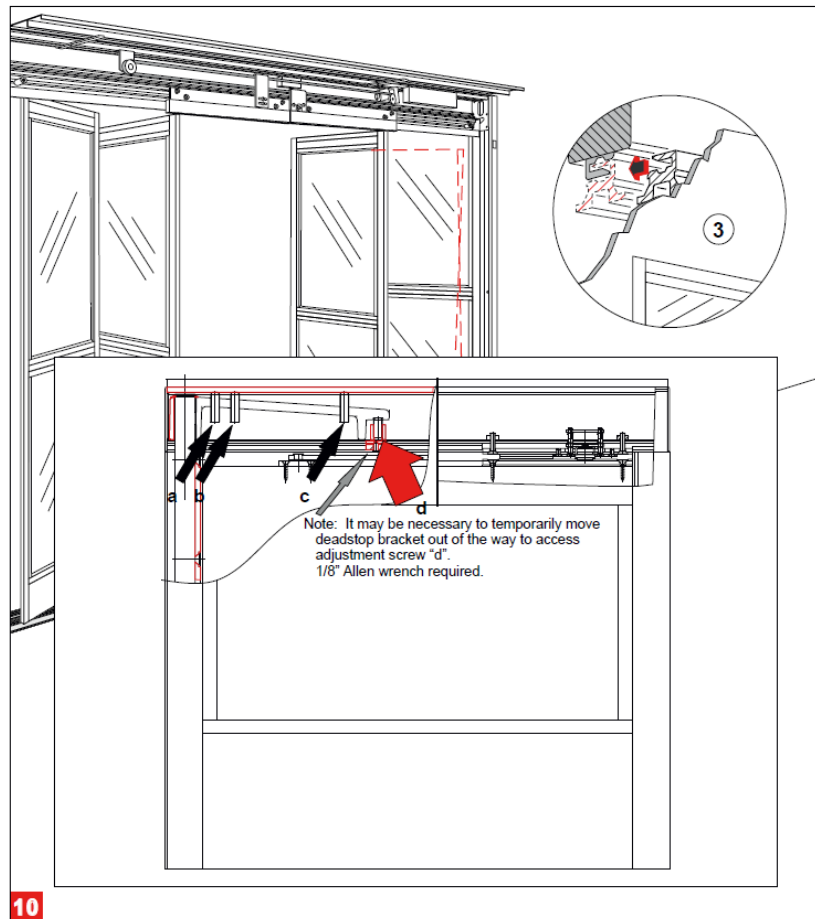
“SX” Panel Centerline Adjustment & “SO” Bottom Latch Installation

1. With the lower belt bracket securely fastened, and the upper belt bracket in its loose position, the panels can be properly adjusted to their center position. After panels are centered, fasten upper belt bracket to carrier. (7/16” socket or wrench required.)



Glazing

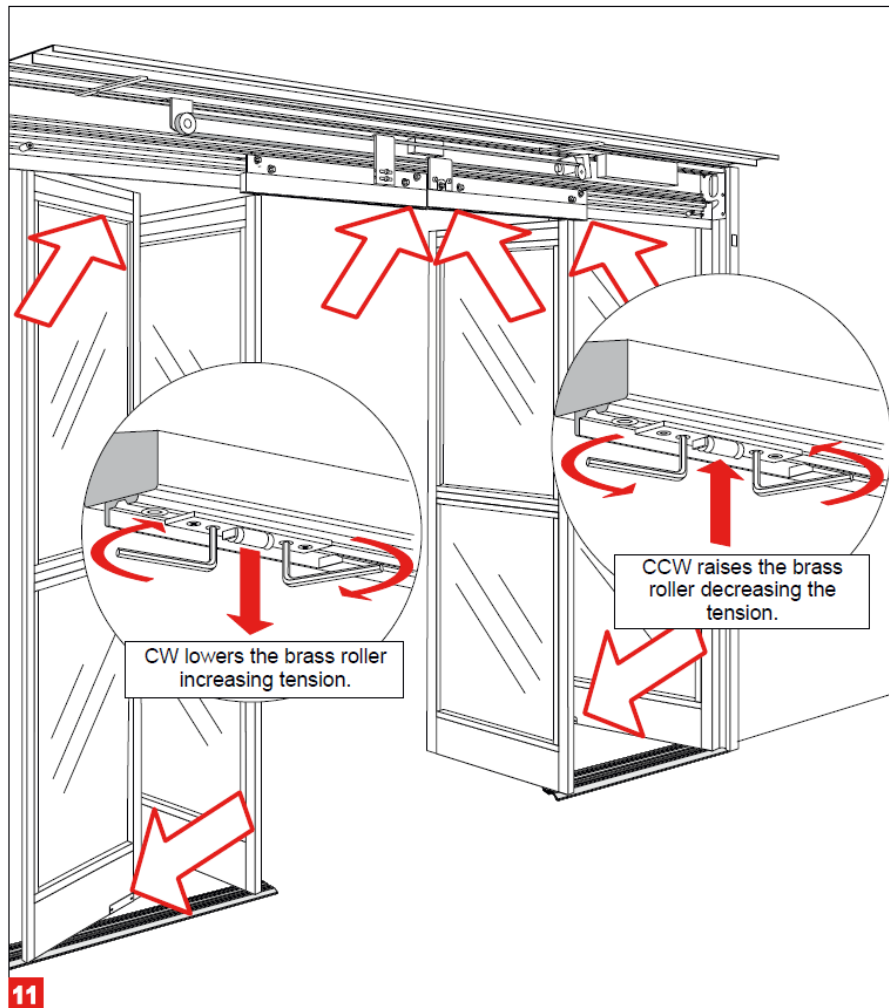
1. Remove the glass stops from exterior side (4 per opening).
2. Center the glass in opening.
3. Properly block and/or cushion glass edges.
4. Press the glass stops into place, starting with the horizontal stops, then follow with the vertical stops.



Adjustment of the Breakout-Unit

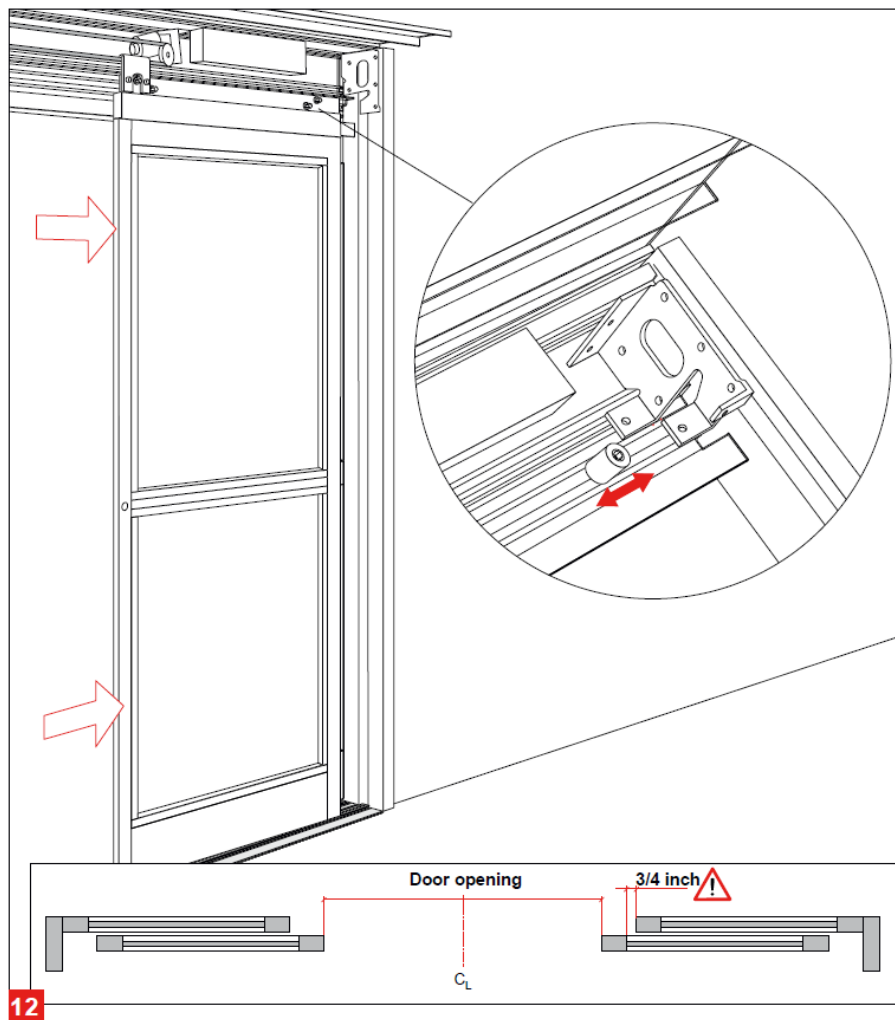
1. Loosen the set screws (a, b & c) to prevent interference while adjusting door. (7/32" Allen wrench required.)
2. Use the adjustment screw (d) to lift (CW), or lower (CCW), the leading edge of door.
3. Continue adjustment until the re-latch profiles are properly aligned.
4. Tighten all set screws (a, b & c) until tight and secure.

Recheck the latched position alignment and readjust as necessary.



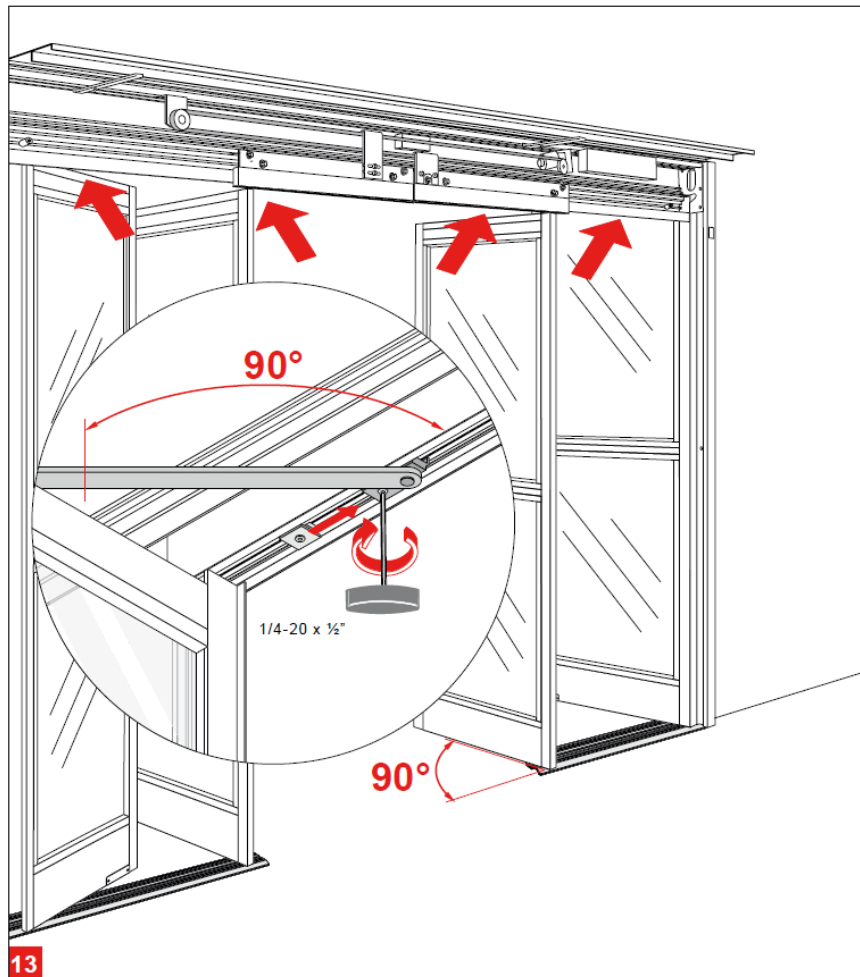
Adjustment of the Roller Catch

Align the roller catches as illustrated, using the adjustment screws. (3mm Allen wrench tool required.) Pay close attention to the disengagement, or breakout force. Do not exceed ANSI A156.10 standards.



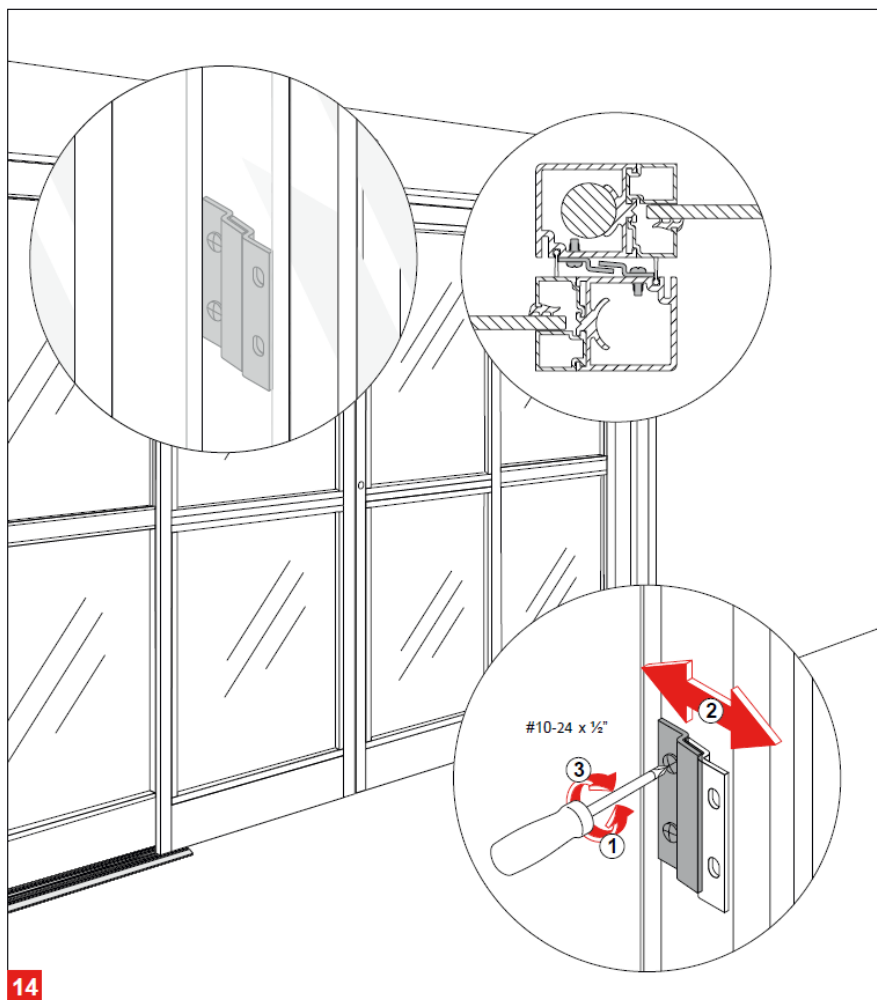
Adjustment of the End Stops

End stops are installed at the factory. Adjustments should be made by loosening the bolt and sliding the stop to the appropriate position. Be sure adjustments are made symmetrically to the door opening, while providing proper finger safety perANSIA156.10 Standards. ($\frac{1}{2}$ " socket or wrench required.)



“SX” and “SO” Panel Breakout Adjustment

1. Open “SX” & “SO” panels to 90°.
2. Move arm stop blocks to engage arm. (1/8” Allen wrench required.)
3. Secure stop blocks.

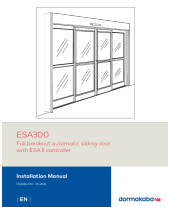



14

“SO” Interlock Clip Adjustment

1. Loosen “SO” interlock clip fasteners.
2. Slide interlock clip on “SO” panel, or “SX” panel, as necessary. Correct adjustment prevents the “SO” panel from breaking out when the “SX” panels are closed, but allows the “SX” panels to breakout when closed.
3. Secure all fasteners when doors are properly adjusted. (Phillips screwdriver required.)

Documents / Resources

 <p>ESA300 Full breakout automatic sliding door with ESA II Controller</p> <p>Installation Manual</p> <p>EN</p>	<p>dormakaba ESA300 Full Breakout Automatic Sliding Door with ESA II Controller [pdf] Installation Guide</p> <p>ESA300 Full Breakout Automatic Sliding Door with ESA II Controller, ESA300, Full Breakout Automatic Sliding Door with ESA II Controller</p>
 <p>ESA300 Full breakout automatic sliding door with ESA II Controller</p> <p>Owner's Manual</p> <p>EN</p>	<p>dormakaba ESA300 Full Breakout Automatic Sliding Door with ESA II Controller [pdf] Owner's Manual</p> <p>ESA300, Full Breakout Automatic Sliding Door with ESA II Controller, ESA300 Full Breakout Automatic Sliding Door with ESA II Controller</p>

References

Manuals+.