

dormakaba 10-F10 Exit Ddevice Operators



dormakaba 10-F10 Exit Ddevice Operators Installation Guide

[Home](#) » [dormakaba](#) » dormakaba 10-F10 Exit Ddevice Operators Installation Guide 

Contents

- 1 dormakaba 10-F10 Exit Ddevice Operators
- 2 Product Usage Instructions
- 3 Saffire LX & Saffire EVO LZ Match-up Chart
- 4 FCC Compliance Statement
- 5 1 Introduction and Disclaimers
- 6 Definitions of Acronyms
- 7 Recommended Tools (not included)
- 8 Components
- 9 Installation Steps
- 10 Documents / Resources
 - 10.1 References
- 11 Related Posts



dormakaba 10-F10 Exit Ddevice Operators



Specifications:

- Models: Saffire LX and Saffire EVO LZ
- Manufacturer: Dormakaba

Product Usage Instructions

1. Introduction and Disclaimers:

Before proceeding with the installation, read all instructions carefully and ensure you have the necessary tools and components.

2. Definitions of Acronyms:

Refer to the provided list of acronyms for better understanding of the components and installation process.

3. Recommended Tools:

Ensure you have the recommended tools for installation, including a drill, screwdriver, and measuring tape.

4. Components:

Refer to the provided list of components to verify you have all the required parts for installation.

Installation Steps:

1. Install Key Cylinder:

Begin by installing the key cylinder according to the provided instructions.

2. Install Mounting Option:

Choose the appropriate mounting option and install it securely as per the manufacturer's guidelines.

3. Install the Lock Spindle:

Insert and secure the lock spindle in place following the specified orientation.

4. Install the Lock Housing on the Door:

Mount the lock housing onto the door using the correct screws and alignment.

5. Install Exit Device:

Attach the exit device to the door as instructed, ensuring proper alignment and functionality.

6. Connect Cables & Install Enclosure:

If applicable, connect any cables and install the enclosure securely around the device.

7. Connect Cables & Install Enclosure (SVR ONLY):

Follow specific instructions for SVR models regarding cable connection and enclosure installation.

8. Install Outside Lever Handle:

Add the outside lever handle to complete the installation, ensuring it operates smoothly.

9. Test Lock Functionality:

Test the lock to ensure it functions correctly before proceeding to program it.

10. Program the Lock:

Follow the provided steps to program the lock according to your preferences and security needs.

FAQ:

• **Q: Can I install this product on any type of door?**

A: The product is designed for specific door types mentioned in the manual. Ensure compatibility before installation.

• **Q: Do I need any special skills to install this product?**

A: Basic knowledge of door hardware installation is recommended for a successful installation process.

Saffire LX Saffire EVO

Exit device operators
Installation Instructions

Saffire LX & Saffire EVO LZ Match-up Chart

PK3713 – Table 1						
ADAPTER PLATE PART NUMBER	SECONDARY BACKPLATE	DRILL. TEMPLATE NUMBER	SVR DRILLING TEMPLATE NO.	MANUFACTURER OF EXITE DEVICE	EXIT DEVICE MODEL NUMBER	
		DT-516418-1	DT-516418-15	DETEX	SURFACE	20/F20
041-515933-1XXX		<ul style="list-style-type: none">DT-516418-2DT-516418-1	<ul style="list-style-type: none">DT-516418-15DT-516418-15	<ul style="list-style-type: none">DORMAVON DUPRIN	<ul style="list-style-type: none">SURFACESURFACE	<ul style="list-style-type: none">9400/F94009827/9927EO-F
		DT-516418-1	DT-516418-15	PRECISION	SURFACE	22/FL22

		DT-516418-1		DETEX	RIM	10/F10
041-515933-1H XXX		DT-516418-1 DT-516418-2		<ul style="list-style-type: none"> DORMA VON DUPRIN 	RIM RIM	<ul style="list-style-type: none"> 9300/F9300 98/99 EO-F
		DT-516418-1		PRECISION	RIM	21/FL21
041-515933-2H XXX	041-515972	DT-516418-3		VON DUPRIN	MORTISE	9875/9975 E O-F
041-515933-4XXX		DT-516418-4	DT-516418-15	ARROW	SURFACE	S3788
041-515933-4H XXX		DT-516418-4		ARROW	RIM	S3888
		DT-516418-5	DT-516418-15	YALE	SURFACE	7170
041-515933-5XXX		DT-516418-5	DT-516418-15	CORBIN RUSSWIN	SURFACE	ED5400
		DT-516418-6	DT-516418-15	HAGAR	SURFACE	4500
		DT-516418-5		CORBIN RUSSWIN	RIM	ED5200
041-515933-5H XXX		DT-516418-6		HAGAR	RIM	4500
		DT-516418-5		YALE	RIM	7100-36
041-515933-6XXX	041-515972	DT-516418-7	DT-516418-15	ARROW (OLD CHASSIS)	SURFACE	S1708/S3708
041-515933-6H XXX	041-515972	DT-516418-7		ARROW (OLD CHASSIS)	RIM	S1808/S3808
	041-515972	DT-516418-7		ARROW (NEW CHASSIS)	MORTISE	S1908/S3908
041-515933-7H XXX	041-515972	DT-516418-8		YALE	CONCEALED	7160
041-515933-8H XXX	041-515972	DT-516418-9		DORMA	CONCEALED	9100/F9100
	041-515972	DT-516418-10		VON DUPRIN	CONCEALED	9847/9947 E O-F
041-515933-9H XXX		DT-516418-11		DETEX	RIM	V40

041-515933-10X XX		DT-516418- 12	DT-516418- 15	SARGENT	SURFAC E	8710 & 8713
041-515933-11H XXX		DT-516418- 13		MONARCH	RIM	18-R
041-515933-12H XXX	041-515972	DT-516418- 14		DORMA	MORTISE	9500/F9500
041-515933-13R XXX		DT-516418- 16	DT-516418- 15	DORMA	SURFAC E	8400
041-515933-13L XXX			DT-516418- 15	DORMA		
041-515933-13H RXXX				DORMA	RIM	8300
041-515933-13H LXXX				DORMA		
041-515933-14			DT-516418- 15	PHI/RELIANT	SURFAC E	5100/FL5100
		DT-516418- 17	DT-516418- 15	VON DUPRIN	SURFAC E	22
041-515933-14H				PHI/RELIANT	RIM	5200/FL5200
				VON DUPRIN	RIM	22

Models: Saffire LX and Saffire EVO LZ

Caution: Changes or modifications to this equipment not expressly approved by the party responsible for compliance could void the user's authority to operate the equipment.

FCC Compliance Statement

This equipment has been tested and found to comply with the limits for a Class B digital device, pursuant to part 15 of the FCC Rules. These limits are designed to provide reasonable protection against harmful interference in a residential installation. This equipment generates, uses, and can radiate radio frequency energy and, if not installed and used in accordance with the instructions, may cause harmful interference to radio communications. However, there is no guarantee that interference will not occur in a particular installation.

- If this equipment does cause harmful interference to radio or television reception, which can be determined by turning the equipment off and on, the user is encouraged to try to correct the interference by one or more of the following measures:
 - Reorient or relocate the receiving antenna.
 - Increase the separation between the equipment and receiver.
 - Connect the equipment into an outlet on a circuit different from that to which the receiver is connected.
 - Consult the dealer or an experienced radio/TV technician for help.

Changes or modifications not expressly approved by the party responsible for compliance could void the user's authority to operate the equipment. This device complies with part 15 of the FCC Rules. **Operation is subject to the following two conditions:**

1. This device may not cause harmful interference, and
2. This device must accept any interference received, including interference that may cause undesired operation.

RF Exposure Statement:

This equipment complies with FCC radiation exposure limits set forth for an uncontrolled environment. This transmitter must not be co-located or operating in conjunction with any other antenna or transmitter. To avoid the possibility of exceeding the FCC radio frequency exposure limits, this equipment should be installed and operated with minimum distance 20 cm between the antenna and your body during normal operation. Users must follow the specific operating instructions for satisfying RF exposure compliance.

ISED non-interference disclaimer:

This device complies with Industry Canada license-exempt RSS standard(s). Operation is subject to the following two conditions: (1) this device may not cause interference, and (2) this device must accept any interference, including interference that may cause undesired operation of the device. This equipment complies with ISED RSS-102 radiation exposure limits set forth for an uncontrolled environment. This transmitter must be installed to provide a separation distance of at least 20 cm from all persons and must not be co-located or operating in conjunction with any other antenna or transmitter.

1 Introduction and Disclaimers

- **Caution:** Please read and follow all directions carefully. Wear safety glasses when making the holes.
- **Target Audience:** These instructions are designed for use by maintenance professionals or lock installers who are familiar with common safety practices and competent to perform the steps described. dormakaba is not responsible for damage or malfunction due to incorrect installation however arising.
- **Important:** Carefully inspect windows, doorframe, door, etc. to ensure that the recommended procedures will not cause damage. dormakaba standard warranty does not cover damages caused by installation. Respect applicable building codes regarding handle height.
- **Technical Assistance** For technical assistance, call: 1.877.468.3555 / +1.514.735 5410 1.800.999.6213 / +1.248.837.3700

Definitions of Acronyms

- CNR: charges sur les normes radioelectriques
- FCC: Federal Communication Commission
- ISED: Innovation, Science and Economic Development Canada
- RF: Radio frequency
- RFID: Radio Frequency Identification
- RSS: Radio Standards Specifications
- MKO: mechanical key override
- SVR: Surface Vertical Rod
- EO: Electronic Override

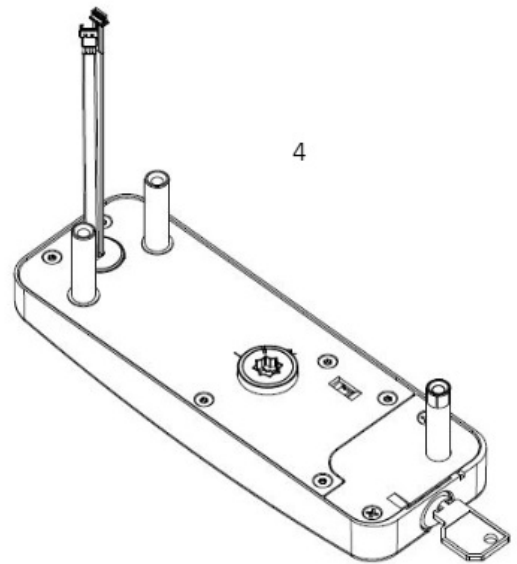
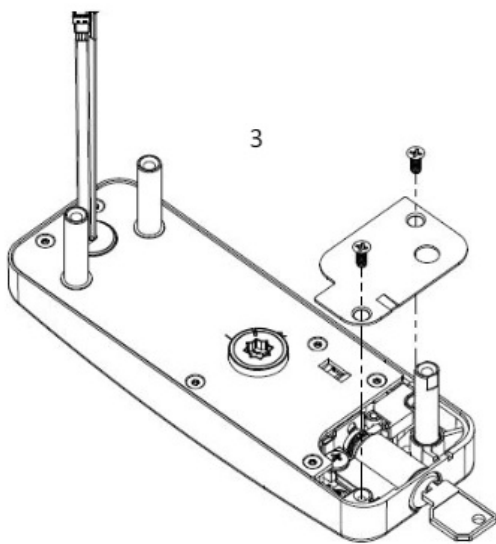
Recommended Tools (not included)

- Drill bits: 1/4" / 5/16" / 1/2" / 3/4" / 1-1/8"
- Phillips screwdriver #2)
- Small flat screwdriver
- Hexagonal key 3mm / 1/8" (Allen Key)



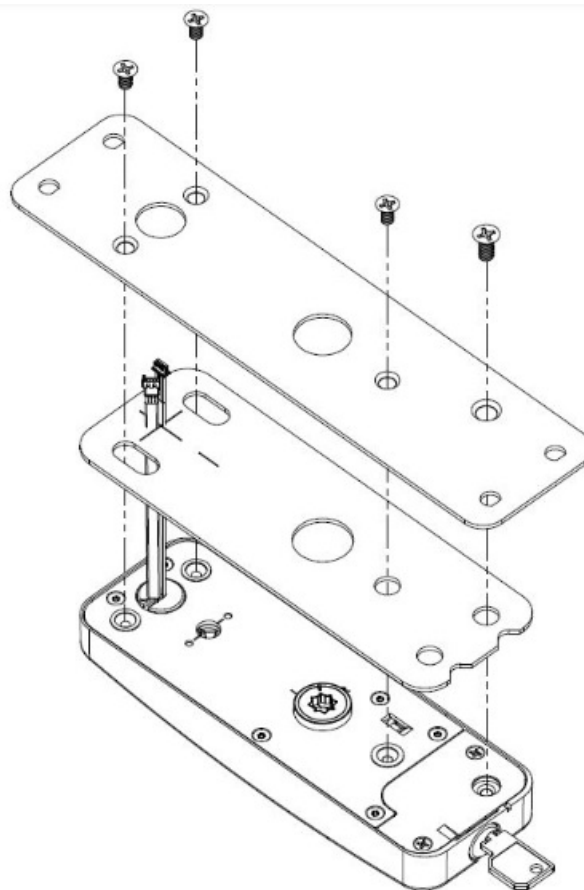
Possible hardware included with lock			
ITEM N O.	PART NUMBER	DESCRIPTION	QTY.
1	017-515483	OUTSIDE BUSHING	1
2	999-511404	BINDING BARREL 10-24	4
3	020-515480-9/10	<ul style="list-style-type: none"> • SPINDLE LATCH EXIT DEVICE • ARROW S1808/S3808; S1708/S3708; S1908/S3908; S3788 	1
4	020-516459-1/2/3/4/5/6/7/8/9	SPINDLE LATCH EXIT DEVICE STANDARD	1
5	020-516465	SPINDLE LATCH MORTISE DORMA/VON DUPRIN	1
6	941-514793	SET SCREW M6 x 8MM	1
7	810-512494-B	SCREW 12-24 x 1 - 3/8 FLAT HEAD, HEX	3
8	810-508429-6/10	SCREW 10-24 x 1-1/2 OR 1-3/4 FLAT HEAD, HEX	4
9	810-511097-1	SCREW 10-24 x 3/8 FLAT HEAD PHILLIPS NO.2	3
10	890-514713	SCREW NO.6 x 5/8 PAN HEAD PHILLIPS	2
11	810-511411	SCREW 12-24 x ½ FLAT HEAD PHILLIPS NO.2	1
12	118-515979	KEY & CYLINDER SAFFIRE LX	1
13	810-516437	SCREW 10-32 x 7/16 ROUND HEAD PHILLIPS NO.2	1
14	041-515465	KEY CYLINDER ACCESS PLATE	1
15	810-509093	SCREW 6-32 x 5/16 FLAT HEAD PHILLIPS NO.2	2
16	118-515937-V	BATTERY & ANTENNA ENCLOSURE	1
17	041-515972	SECONDARY BACKPLATE	1
18	033-515996-2	LOCK GASKET	1
19	810-515193	SCREW 8-32 x ½ PAN HEAD PHILLIPS	2

-



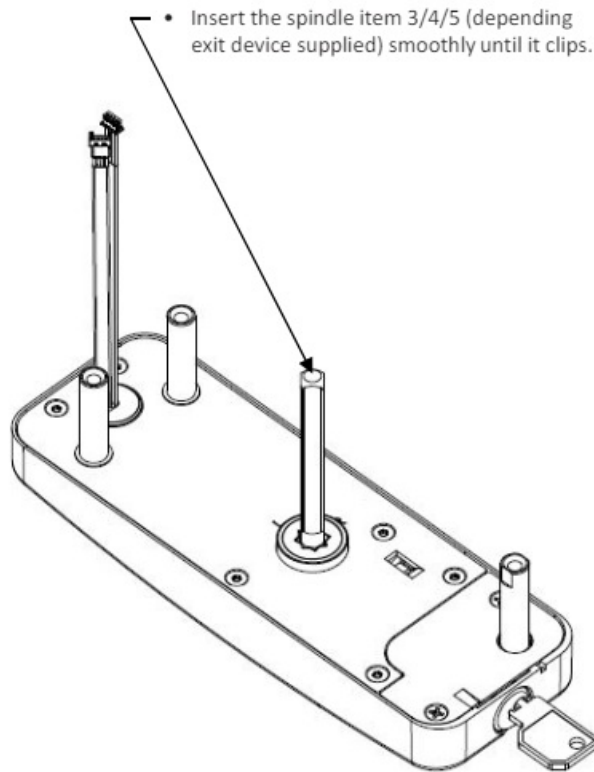
Install mounting option (for secondary backplate mounting only)

- If supplied with secondary backplate item 17, install gasket item 18 & secure secondary backplate item 17 into place using 3 screw items 9 & 1 screw item 11.



Install the lock spindle

The spindle must be installed and properly secured in the front lock housing assembly. The spindle is used to connect the handle to operate the opening and closing door mechanism.



Install the lock housing on the door

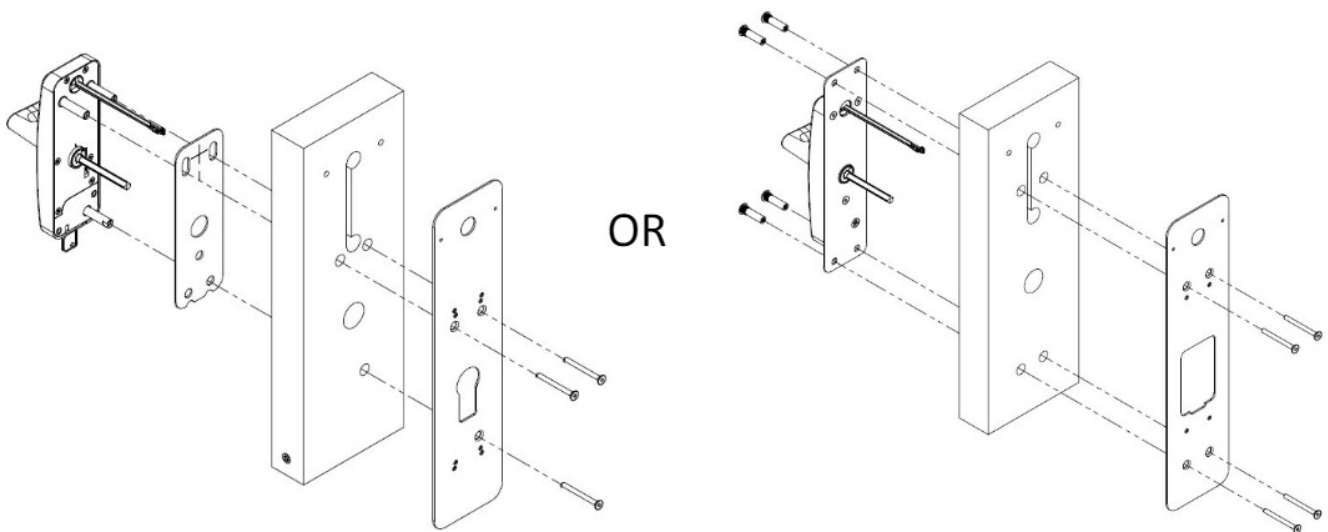
Before starting the installation of the lock on the door, please make sure the door has been prepared properly with proper holes for the lock. Refer to corresponding drilling template for your lock model. Drilling templates are available in the centerfold included in this installation manual and on the dormakaba support site (dormakabalodgingsupport.com)

Install the housing on the door and align with the lock mechanism.

- Install the front lock housing with gasket item 19, routing the wire cable(s) by the center hole at the top & in the groove.
- Install the supplied adaptor plate and secure with 3 screw items 7.

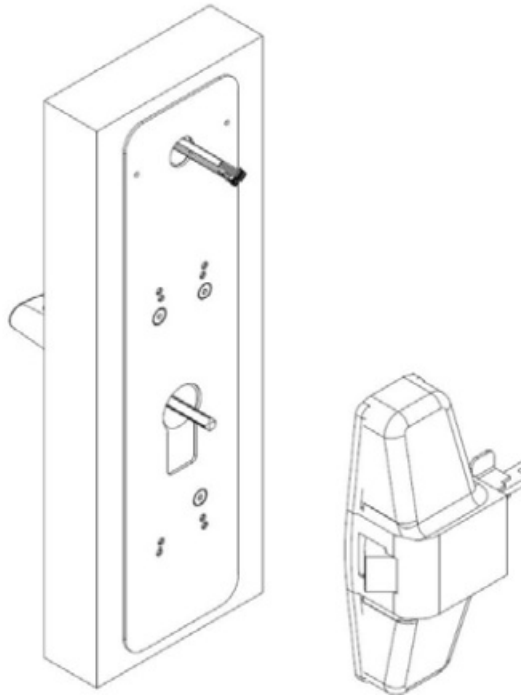
OR

- If supplied with secondary backplate item 18, secure the housing into place using 4 binding barrels item 2 with 4 screw items 8.



Install exit device

- Please refer to exit device manufacturer installation manual.

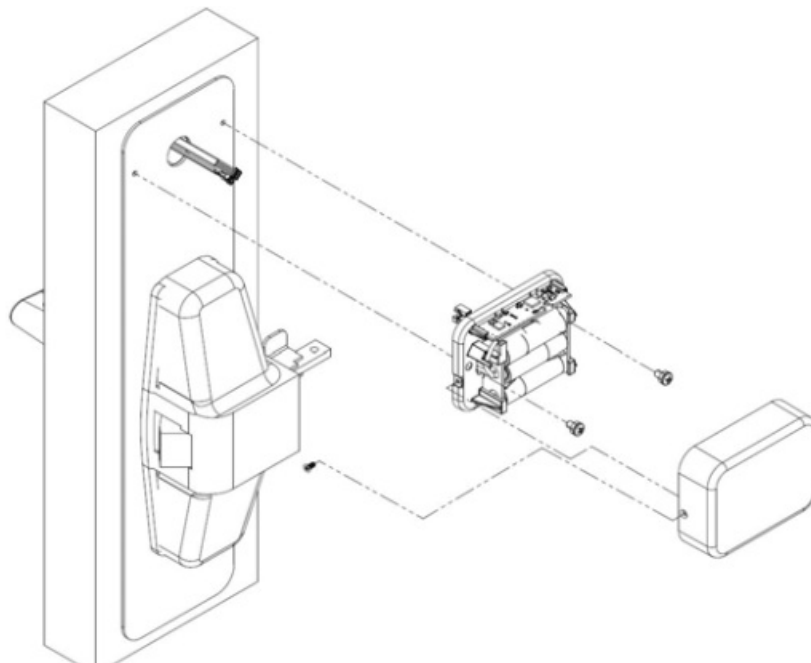


• **IMPORTANT**

For rim and concealed mount exit devices, start with step 5.6 For surface mount exit devices, start with step 5.7

Connect the cables & install enclosure

- Connect each cable with its matching connector and route the excess of cable back into the hole of the door.
- Secure battery enclosure with 2 screw items 19.
- Insert the batteries in the battery holder respecting the polarity indicated in the battery holder.
- Reinstall cover with setscrew

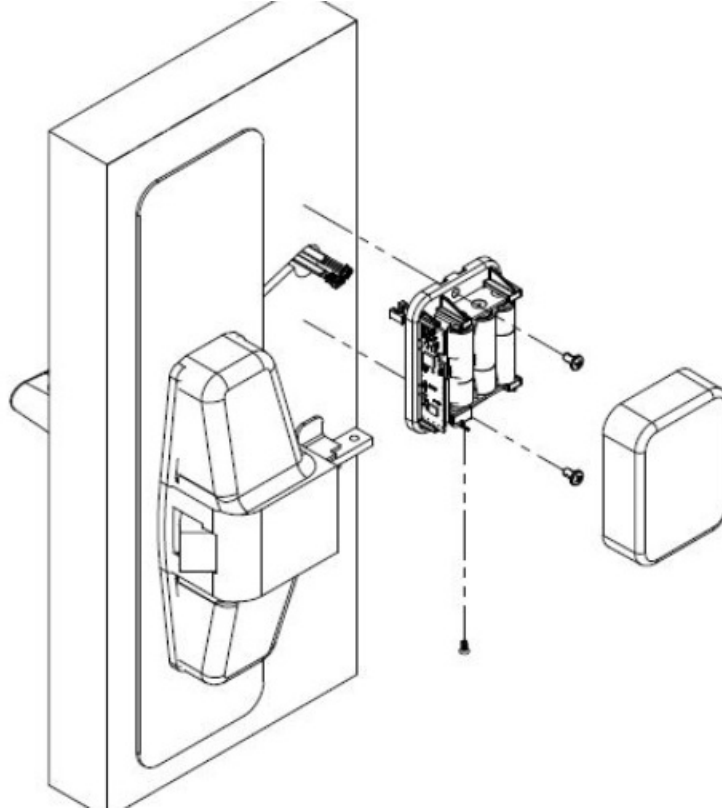


Connect the cables & install enclosure (SVR ONLY)

IMPORTANT

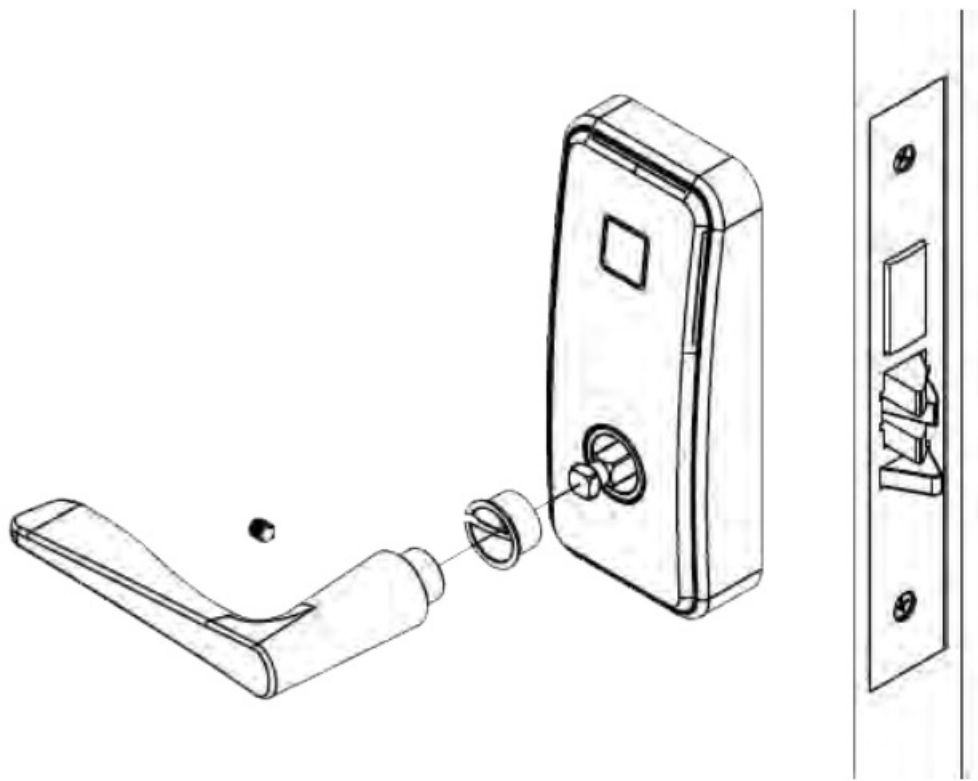
All Surface vertical rods exit device require the use of DT-516418-15 After final assembly, you must not be able to see cable groove.

- Connect each cable with its matching connector and route the excess of cable back into the hole of the door.
- Line up the enclosure in the same position as shown below with the supplied surface mount drilling template. Proceed to drill the screws into the door.
- Secure battery enclosure with 2 screw items 10
- Insert the batteries in the battery holder respecting the polarity indicated in the battery holder
- Reinstall cover with setscrew.



Install the outside lever handle

- Install the outside bushing item 1, making sure it is snug
- Install the outside lever handle according to the lock handing (LH/RH)
- Secure using set screw item 6.



IMPORTANT

Use only Alkaline batteries

Test lock functionality

Make sure the room door is open prior testing.

- A - Present test keycard
- B - Check green & red lights flash
- C - Rotate outside lever to check bolt or rod(s) retraction
- D - Release outside lever, should move freely
- E – Push panic bar to check bolt or rod(s) retraction

Program the lock

Refer to dormakaba access management system user manual for lock programming.

Think tomorrow

We are committed to championing sustainability in everything we do, from producing more sustainable solutions to help our customers lessen their environmental footprint to being a fair and responsible employer and neighbor.



Door
Hardware



Electronic
Access & Data



Mechanical
Key Systems



Lodging
Systems



Entrance
Systems



Interior Glass
Systems



Safe
Locks




Service

- Customer Service
- KWSCustomerService.AMER@dormakaba.com
- Technical Support
- lodgingsupport@dormakaba.com
- www.dormakabalodgingsupport.com
- dormakaba USA Inc. 6161 E. 75th Street Indianapolis, IN 46250
- T: 1 800 849 8324 dormakaba.us



dormakaba.com

Documents / Resources

	<p>dormakaba 10-F10 Exit Ddevice Operators [pdf] Installation Guide</p> <p>10-F10 Exit Ddevice Operators, 10-F10, Exit Ddevice Operators, Ddevice Operators, Operators</p>
--	--

References

- [🇬🇧 dormakaba UK and Ireland | For every place that matters](#)
- [🇺🇸 dormakaba USA | For every place that matters](#)
- [🌐 my.dormakaba](#)
- [User Manual](#)

[Manuals+](#), [Privacy Policy](#)

This website is an independent publication and is neither affiliated with nor endorsed by any of the trademark owners. The "Bluetooth®" word mark and logos are registered trademarks owned by Bluetooth SIG, Inc. The "Wi-Fi®" word mark and logos are registered trademarks owned by the Wi-Fi Alliance. Any use of these marks on this website does not imply any affiliation with or endorsement.