



# DoreMidi ATD-1024 ART-NET DMX-1024 Network Box Instruction Manual

[Home](#) » [DoreMidi](#) » DoreMidi ATD-1024 ART-NET DMX-1024 Network Box Instruction Manual 

## Contents

- [1 DoreMidi ATD-1024 ART-NET DMX-1024 Network Box](#)
- [2 Introduction](#)
- [3 Appearance](#)
- [4 Product Parameters](#)
- [5 Steps for usage](#)
- [6 Precautions](#)
- [7 Documents / Resources](#)
  - [7.1 References](#)
- [8 Related Posts](#)



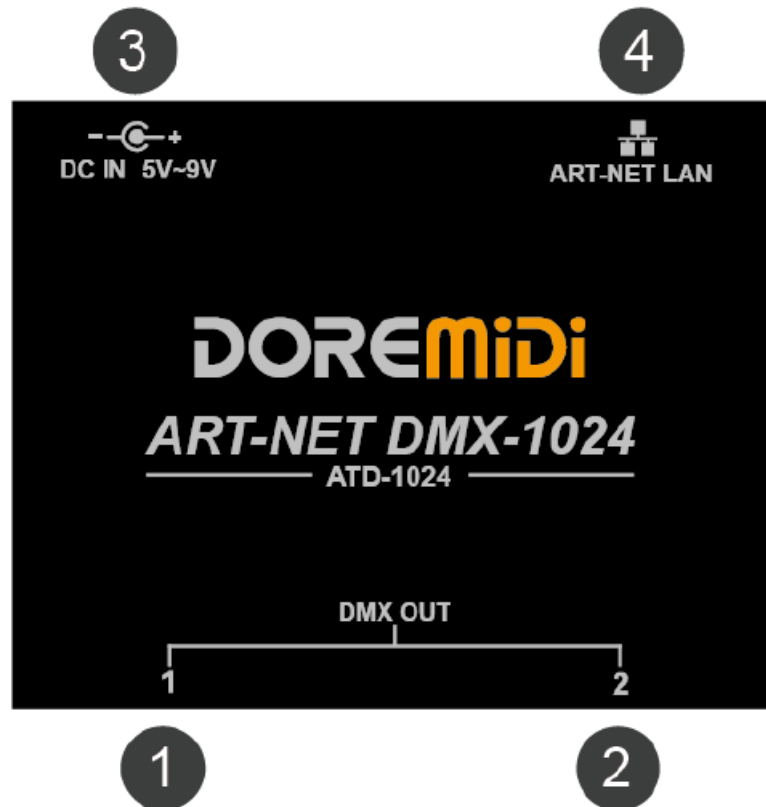
## DoreMidi ATD-1024 ART-NET DMX-1024 Network Box



## Introduction

ART-NET DMX-1024 network box (ATD-1024) is a DMX 1024 channel gateway controller designed by DOREMiDi. This product can connect DMX equipment with 3Pin XLR interface to the local area network, so that the computer can remotely control the DMX equipment through the local area network.

## Appearance



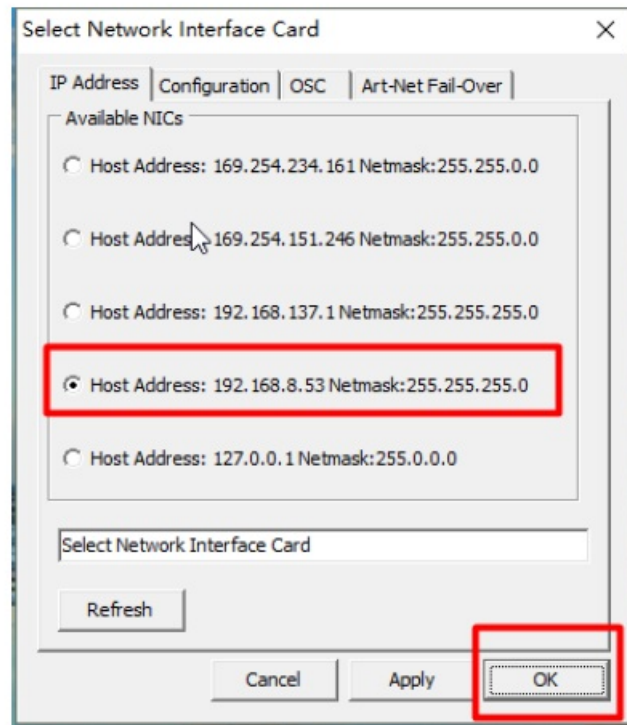
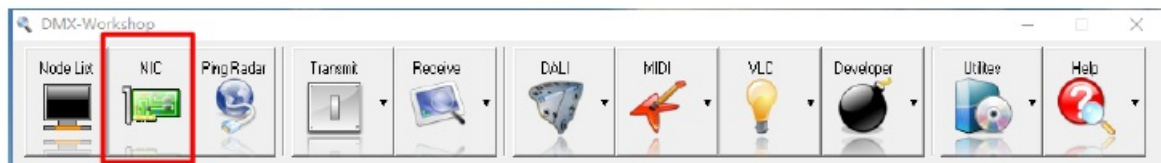
1. DMX XLR interface
2. through the 3Pin XLR interface, to connect devices with DMX function. There is a working indicator.
3. DC IN 5V~9V The product power supply interface uses a DC5.5\*2.1 plug to power the product. The power supply voltage is 5V~VDC. ART-NET LAN The Ethernet interface, through the network cable, connects to the Ethernet equipment, such as routers, switches, etc. There is a working indicator.

## Product Parameters

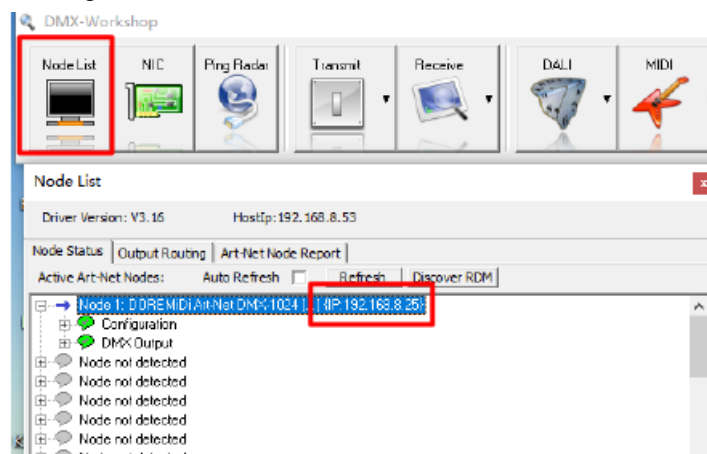
Name	Description
Model	ATD-1024
Size (L x W x H)	88*70*38mm
Weight	160g
XLR Interface	2 standard 3Pin XLR interfaces, each interface has 512 DMX channels
Ethernet Interface	Standard Ethernet ART-NET interface
DC In Interface	Use DC 5V~9V power supply
Indicator Light	Product power indicator, network communication indicator, XLR interface working indicator
XLR Compatibility	Compatible with all DMX devices with 3Pin XLR interface

## Steps for usage

1. Connection: Supply power to ATD-1024 through DC IN, DMX OUT is connected to DMX device using 3Pin XLR cable, ART NET LAN is connected to switch or router through network cable.
2. Obtain the IP address of ATD-1024 in the network:
  - Download “DMX-Workshop”, and install “DMX-Workshop” according to the prompts.
  - DMX-Workshop download link:<http://11167047.s21d-11.faiusrd.com/0/ABUIABBPGAAGi6TzhAYozNHRkwI?f=DMX+Workshop.z ip&v=1620890124>
  - Open “DMX-Workshop” and click “NIC”, select “Host Address: 192.168.8.53 Netmask: 255.255.255.0” and click “OK”. As shown:

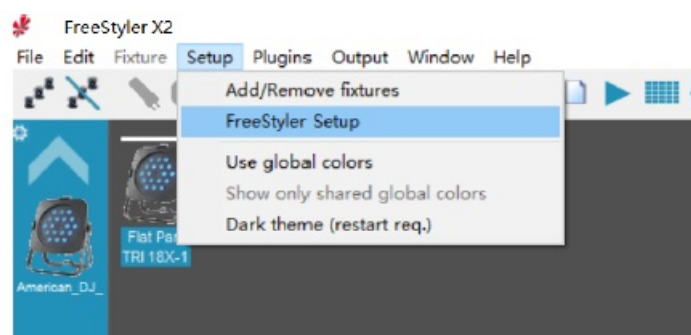


- Click "Node List" to find the IP address of the box and record it (note: the IP address of each box is different), as shown in the figure, the IP address is 192.168.8.25. As shown:

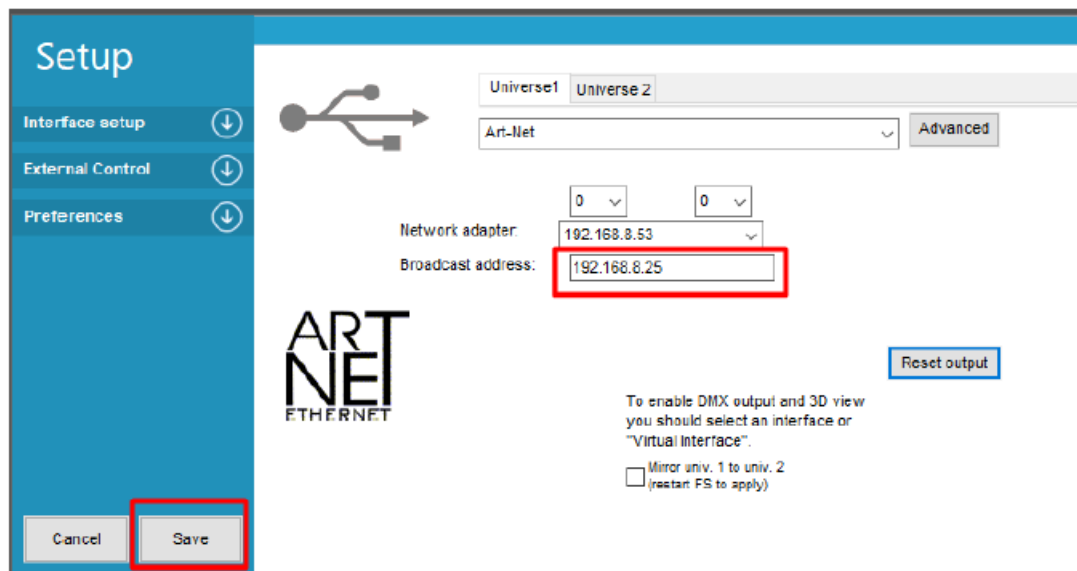


### 3. software settings: Take FreeStyle X2 as an example

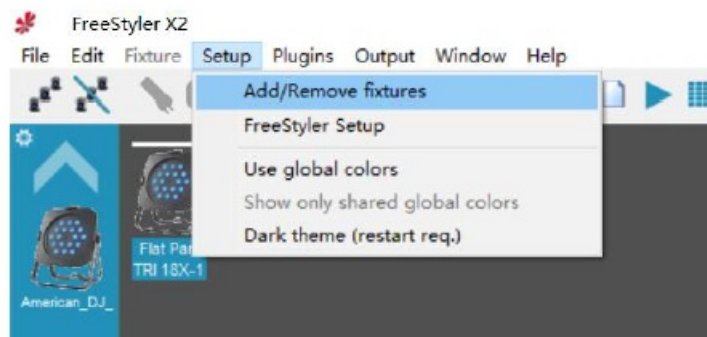
- Install FreeStyle X2 software: FreeStyle software download link: [www.freestyledmx.be](http://www.freestyledmx.be)
- Open the "FreeStyler" software, click "Setup" and select "FreeStyler Setup". As shown:



- Fill in the obtained IP address, and then click "Save". As shown:



- Open “Setup→Add/Remove fixtures” to add/remove the DMX devices that need to be controlled. As shown:



## Precautions

1. This product contains a circuit board.
2. Rain or immersion in water may cause the product to malfunction.
3. Do not heat, press, or damage internal components.
4. Non-professional maintenance personnel are not allowed to disassemble the product.
5. The working voltage of the product is 5VDC, using a voltage lower or exceeding this voltage may cause the product to fail to work or be damaged.

## 6. Q&A

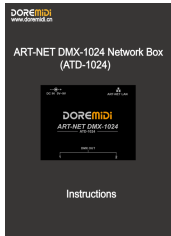
**Question: The IP address of ATD-1024 cannot be obtained.**

Answer: Please make sure that the “DMX Workshop” software has been installed correctly; and make sure that the software computer and ATD-1024 are in the same local area network; please turn off the computer firewall before setting.

**Question: The lamp cannot be controlled normally after connecting to the DMX lamp.**

Answer: Please make sure that the DMX channel sent is consistent with the lamp. If the problem is not resolved, please contact customer service.

## Documents / Resources



[DoreMidi ATD-1024 ART-NET DMX-1024 Network Box](#) [pdf] Instruction Manual  
ATD-1024, ART-NET, DMX-1024, Network Box

## References

- [11167047.s21d-11.faiusrd.com/0/ABUIABBPAAgi6TzhAYozNHrkwl?f=DMX+Workshop.z](https://11167047.s21d-11.faiusrd.com/0/ABUIABBPAAgi6TzhAYozNHrkwl?f=DMX+Workshop.z)
- [Freestyler website](#)
- [Freestyler website](#)

Manuals+.