



**Contents** [ [hide](#) ]

- [1 DOOYA DD274B Controller](#)
- [2 Product Usage Instructions](#)
- [3 Product Features](#)
- [4 Radio Range](#)
- [5 Matchable Emitters](#)
- [6 Instructions Of Buttons](#)
- [7 Wiring](#)
- [8 Best Installation Distance](#)
- [9 Switch Rotating Direction](#)
- [10 Delete One Additional Emitter](#)
- [11 Jog Function](#)
- [12 FCC Statement](#)
- [13 Frequently Asked Questions](#)
- [14 Documents / Resources](#)
  - [14.1 References](#)

# DOOYA

## DOOYA DD274B Controller



## Specifications

- **Product:** DD274B Controller
- **Input Voltage:** AC 100- 240V, 50- 60Hz
- **Working Temperature:** -10°C to +65°C
- **Wireless Reception**
- **Mechanical Limit**
- **Connectable** 12V 24W LED Strip
- **Radio Frequency:** 433.92MHz
- **Radio Range:** 200m outdoor, 35m indoor
- **Max. Channels:** 20

## Product Usage Instructions

### Wireless Reception and Mechanical Limit

- The DD274B controller allows wireless reception and features a mechanical limit to control the motor running time.

### LED Strip Connection

- To connect a 12V 24W LED strip, use the provided wiring guide with the specified

colors for positive, negative, and switch connections.

## Pairing Emitters

- To pair additional emitters, follow the specific instructions provided: press the UP and STOP buttons simultaneously for 2 seconds to pair, and ensure the setting indicator confirms successful pairing.

## Switch Rotating Direction

- To switch the rotating direction, press the UP and DOWN buttons simultaneously for 6 seconds during the setting status. The setting indicator will confirm the successful direction switch.

## Delete Emitters

- To delete one or all additional emitters, follow the instructions provided while ensuring each operation is completed within 10 seconds to prevent exiting the setting status prematurely.

## Jog Function

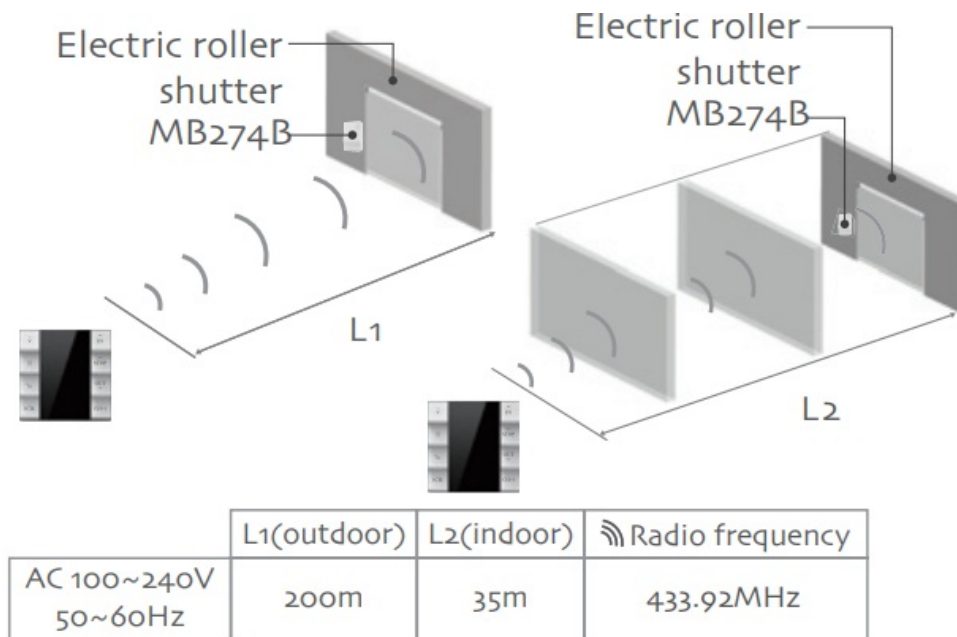
- Activate the jog function by following the specific instructions; short-press UP or DOWN for jogging, running, or press and hold for more than 2 seconds for continuous movement.

## Product Features

1. **Note:** The motor with this receiver can run continuously, Max. 3 minutes.
  2. When the emitter is group-controlled, the code is invalid.
- **Wireless** reception
  - **Light** touch
  - **Mechanical** limit
  - **Connectable** 12V 24W LED strip
  - **Input voltage:** AC 100~240V 50~ ~60Hz
  - **Working temperature:** – -10°C ~ +65°C
  - One MB274 B controller can store a maximum of. 20 channels.
  - If you add a new channel, first cover the second channel and then cover it in turn

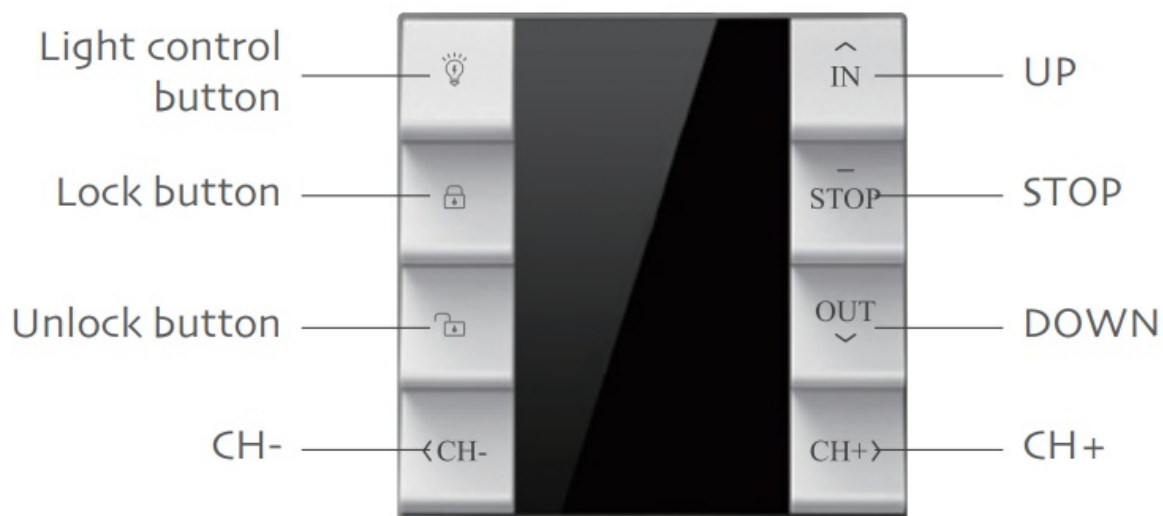
## Radio Range

**Note:** The effective radio distance will deviate due to the actual environment.



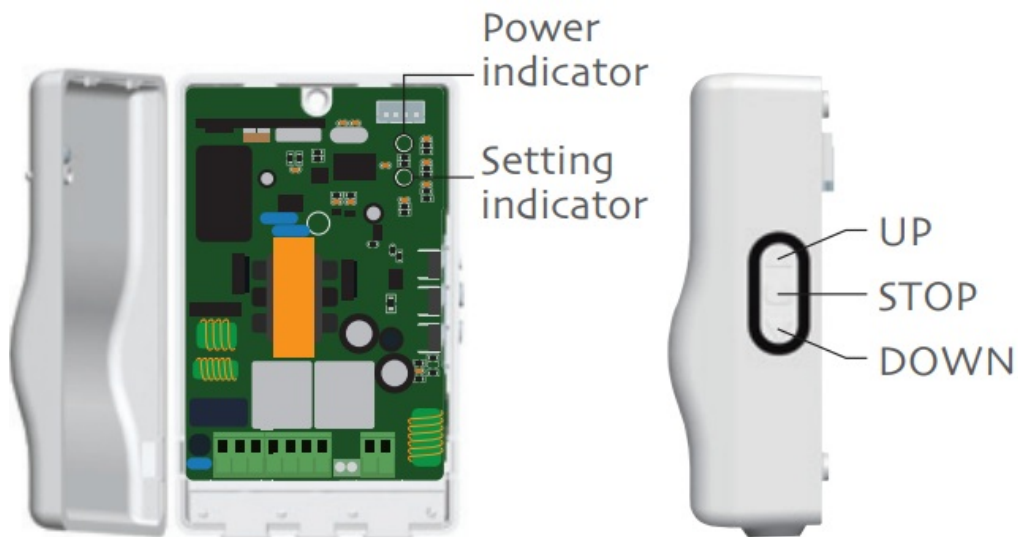
## Matchable Emitters

**Note:** Up button + Stop button = Setting button.

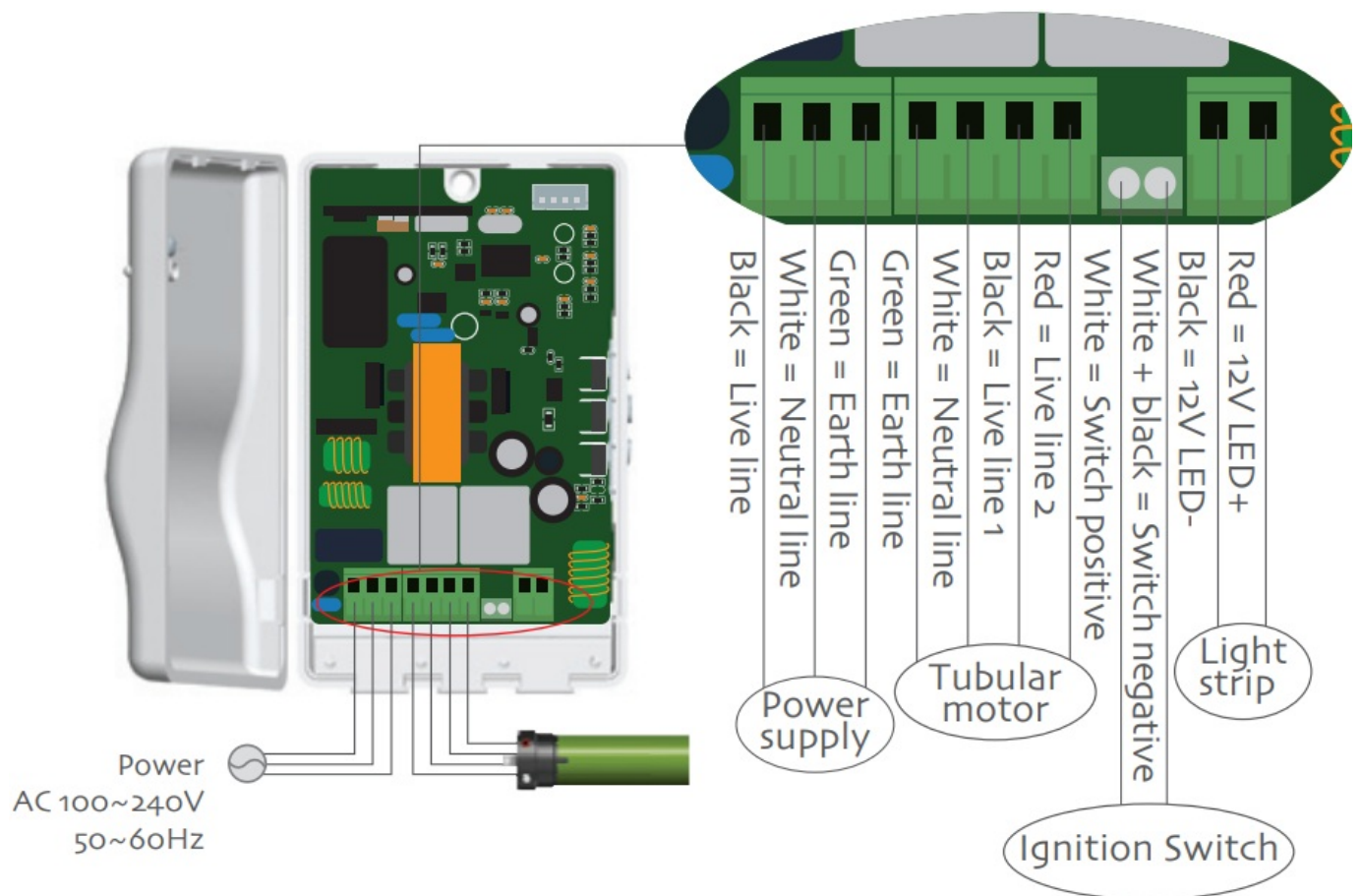


## Instructions Of Buttons

**Note:** Up button + Stop button = Setting button.

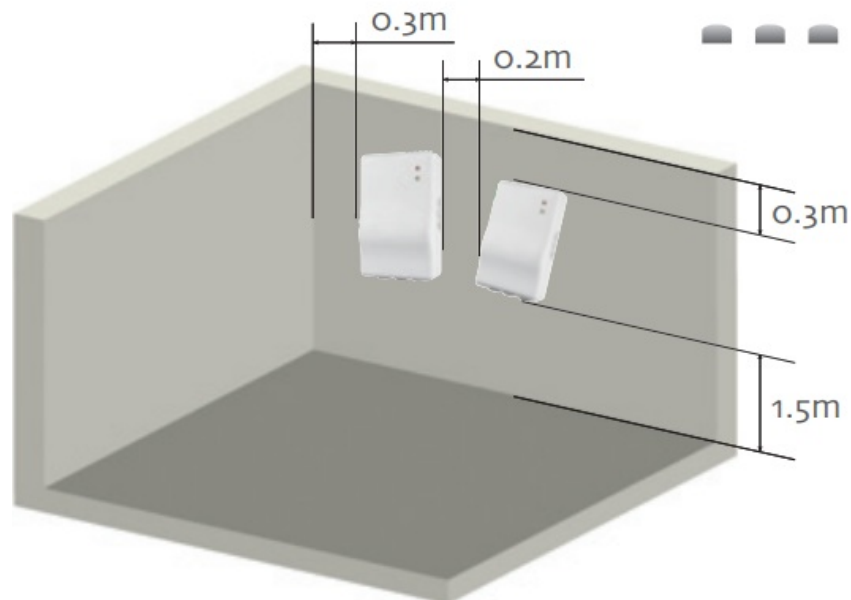


## Wiring



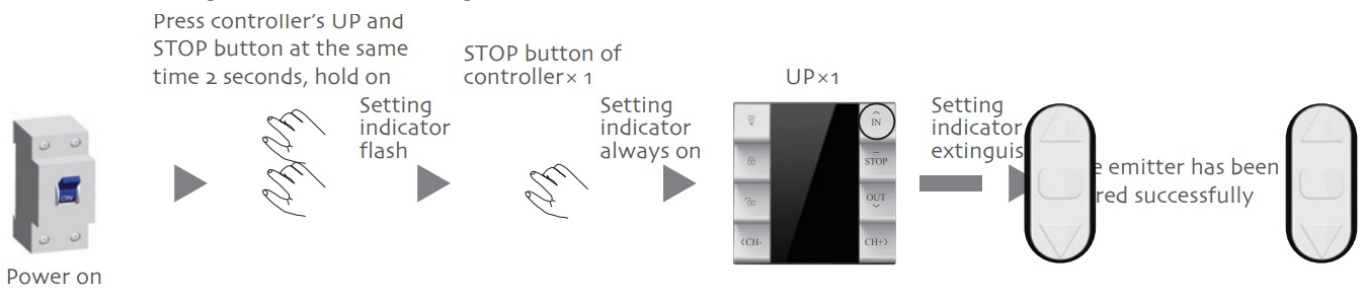
## Best Installation Distance

1. The shortest distance between the controller and the ground is  $\geq 1.5\text{m}$
2. The shortest distance between the controller and the roof is  $\geq 0.3\text{m}$
3. The shortest distance between the controllers and the controller is  $\geq 0.2\text{m}$



## Pairing/Pairing Additional Emitter

**Note:** During the setting status, every operation should be less than 10S, or else, it will exit the setting and back to original status.



## Switch Rotating Direction

**Note:** During the setting status, every operation should be less than 10S, or else, it will exit the setting and back to the original status.

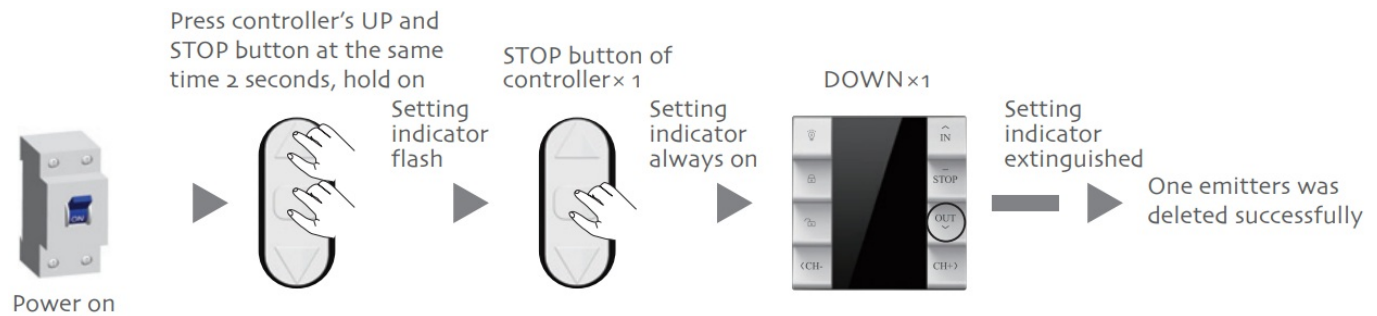


- Press the controller's UP and DOWN buttons at the same time for 6 seconds, hold on
- Setting the indicator always on, then flashed and extinguished
- The direction has been switched successfully.

## Delete One Additional Emitter

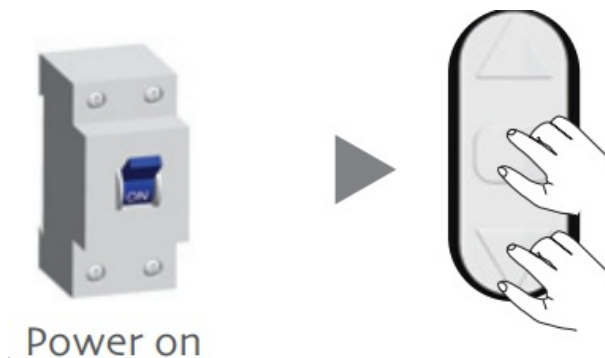
**Note:** During the setting status, every operation should be less than 10S, or else, it will

exit the setting and back to the original status.



## Delete All Additional Emitters

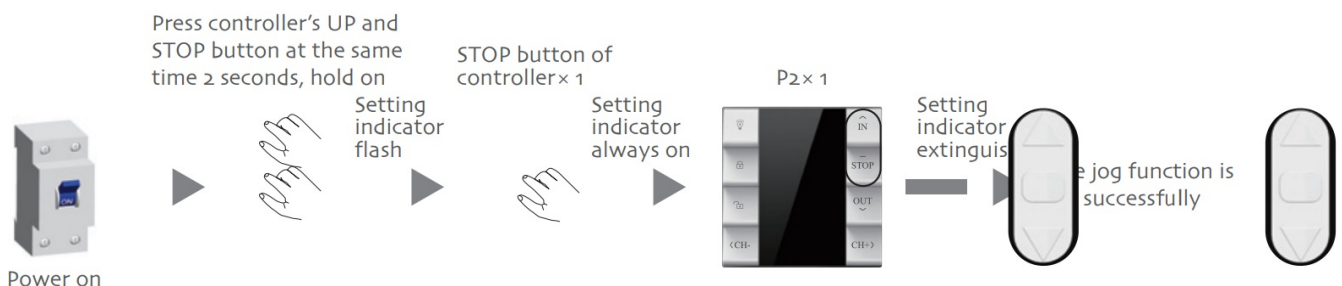
**Note:** During the setting status, every operation should be less than 10S, or else, it will exit the setting and back to the original status.



- Press the controller's STOP and DOWN buttons at the same time for 6 seconds, then hold on.
- Setting the indicator always on, then flashed and extinguished
- All emitters have been deleted successfully.

## Jog Function

- **Note:** During the setting status, every operation should be less than 10S, or else, it will exit the setting and back to original status.
- When the jog function is activated, short-press UP or DOWN, the motor will jog run; Press UP or DOWN for more than 2 seconds, the motor will continue to run



## FCC Statement

## RF exposure statement

This equipment complies with the FCC radiation exposure limits set forth for an uncontrolled environment. This transmitter must not be co-located or operating in conjunction with any other antenna or transmitter.

## **FCC Warning**

This device complies with Part 15 of the FCC Rules. Operation is subject to the following two conditions:

1. This device may not cause harmful interference,
2. This device must accept any interference received, including interference that may cause undesired operation.

**Note:** This equipment has been tested and found to comply with the limits for a Class B digital device, under part 15 of the FCC Rules. These limits are designed to provide reasonable protection against harmful interference in a residential installation. This equipment generates, uses, and can radiate radio frequency energy and, if not installed and used according to the instructions, may cause harmful interference to radio communications. However, there is no guarantee that interference will not occur in a particular installation. Suppose this equipment does cause harmful interference to radio or television reception, which can be determined by turning the equipment off and on. In that case, the user is encouraged to try to correct the interference by one or more of the following measures:

- Reorient or relocate the receiving antenna.
- Increase the separation between the equipment and receiver.
- Connect the equipment to an outlet on a circuit different from that to which the receiver is connected.
- Consult the dealer or an experienced radio/TV technician for help.

**NOTE:** Any changes or modifications to this unit not expressly approved by the party responsible for compliance could void the user's authority to operate the equipment.

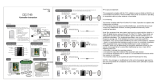
## **Frequently Asked Questions**

- **Q: What is the maximum running time for the motor with this receiver?**
  - **A:** The motor can run continuously for a maximum of 3 minutes.



- **Q: How many channels can one DD274B controller store?**
  - **A:** The controller can store up to 20 channels. When adding a new channel, ensure to cover the previous channels accordingly.
- **Q: What is the best installation distance for the DD274B controller?**
  - **A:** The recommended installation distances are 1.5m from the ground, 0.3m from the roof, and 0.2m between controllers.

## Documents / Resources

|   |   |
|---|---|
|  | <a href="#">DOOYA DD274B Controller [pdf]</a> Instruction Manual<br>MB274B, DD274B Controller, DD274B, Controller |
|---|---|

## References

- [User Manual](#)

📎 controller, DD274B, DD274B Controller, Dooya,

📁 Dooya MB274B

## Leave a comment

Your email address will not be published. Required fields are marked \*

Comment \*

Name

Email

Website

☐ Save my name, email, and website in this browser for the next time I comment.

**Post Comment**

**Search:**

**Search**

[Manuals+](#) | [Upload](#) | [Deep Search](#) | [Privacy Policy](#) | [@manuals.plus](#) | [YouTube](#)

This website is an independent publication and is neither affiliated with nor endorsed by any of the trademark owners. The "Bluetooth®" word mark and logos are registered trademarks owned by Bluetooth SIG, Inc. The "Wi-Fi®" word mark and logos are registered trademarks owned by the Wi-Fi Alliance. Any use of these marks on this website does not imply any affiliation with or endorsement.