



DOORsafe 3116 Temperature Humidity Sensor User Guide

[Home](#) » [DOORsafe](#) » DOORsafe 3116 Temperature Humidity Sensor User Guide 

Contents

- [1 DOORsafe 3116 Temperature Humidity Sensor](#)
- [2 ADD TO THE APP](#)
- [3 MOUNTING](#)
- [4 SPECIFICATIONS](#)
- [5 Documents / Resources](#)
- [6 Related Posts](#)



DOORsafe 3116 Temperature Humidity Sensor



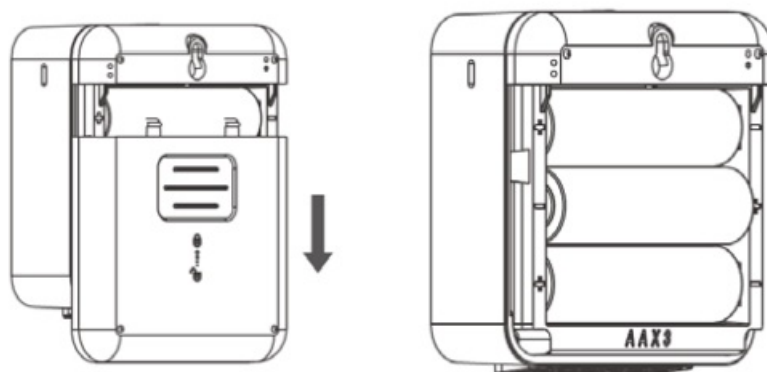
ADD TO THE APP

STEP 1:

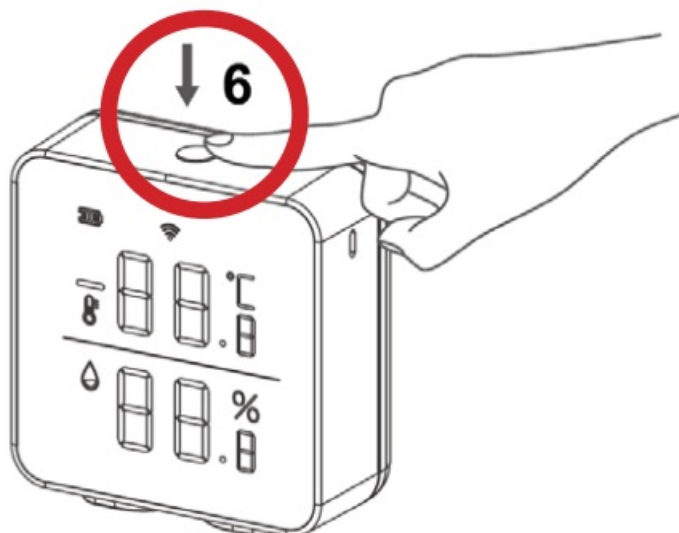
- Download the app



- Create an account in the app.
- Once the app is ready to use, grab the sensor.
- Slide open the back cover
- Insert the 3 AA batteries
- The screen will now turn on



- Now press 1 x 5 sec. on the button (6) so that the WiFi symbol on the screen flashes quickly.
- Now press 1 x 5 sec. on the button (6) so that the WiFi symbol on the screen flashes slowly.



(When flashing quickly, the app will automatically try to connect to the network that the sensor transmits. But this

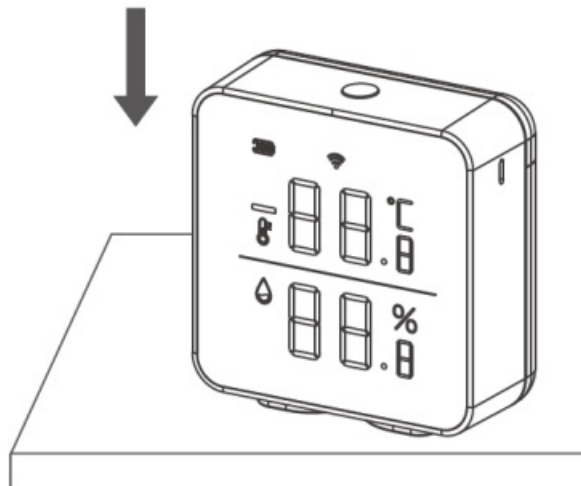
does not always work. Therefore, it is preferable to choose the mode where the WiFi symbol flashes slowly and where it is necessary to manually connect to the network transmitting the sensor.)

STEP 2:

- Go to the home screen of the app.
- Press + (Add Device)
- In the app, select: 'SENSORS'
- **Select:** 'SENSOR(WIFI)'
- Make sure Smartphone is connected to your 2.4Ghz WiFi network
- Enter your 2.4Ghz WiFi password
- **Select:** 'Confirm indicator is blinking rapidly'
- **Select:** 'Blink slowly'
- Choose 'Go to Connect'
- The sensor is now transmitting a WiFi network when the LED on the sensor is flashing slowly. The network that the sensor is transmitting starts with 'Smartlife-XXXX'. Now let the smartphone connect to this network.
- As soon as the smartphone is connected to the SmartLife-XXXX WiFi network, go back to the Smart Life app
- View the progress in the app, this can take up to 2 minutes
- As soon as the addition to the app is successful: give the sensor a name.

MOUNTING

- Place the sensor on a table



- Or hang the sensor with a screw on the hole on the back (5)



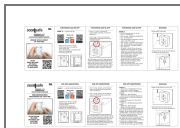
SPECIFICATIONS

- **Internet:** 2.4 GHz. WIFI
- **Battery:** DC 4.5V (3xAA battery)
- **Dimensions:** 64 x 64 x 28 mm
- **Use:** indoors only
- **Temperature:** -10~55 Celcius
- **App:** SmartLife / Tuya Smart
- In the app you can see:
 - how full the battery is
 - the current temperature
 - the current humidity
 - history over time
- Do not place this sensor near a heat source or in your hand, as it will prevent accurate measurement.
- If the sensor is placed in a new environment, it will take 20 minutes to get a new accurate measurement.

Doorsafe

Postbus 63
3645 ZK Vinkeveen
The Netherlands
www.doorsafe.eu

Documents / Resources



[DOORsafe 3116 Temperature Humidity Sensor](#) [pdf] User Guide
3116 Temperature Humidity Sensor, 3116, Temperature Humidity Sensor, Temperature Sensor, Humidity Sensor, Sensor, 3116 Sensor