



DOORKING ProxPlus Secure Card Readers Installation Guide

[Home](#) » [DOORKING](#) » DOORKING ProxPlus Secure Card Readers Installation Guide 

DOORKING ProxPlus Secure Card Readers Installation Guide



Contents

- [1 Installation](#)
- [2 Disclaimer](#)
- [3 Documents / Resources](#)
- [4 Related Posts](#)

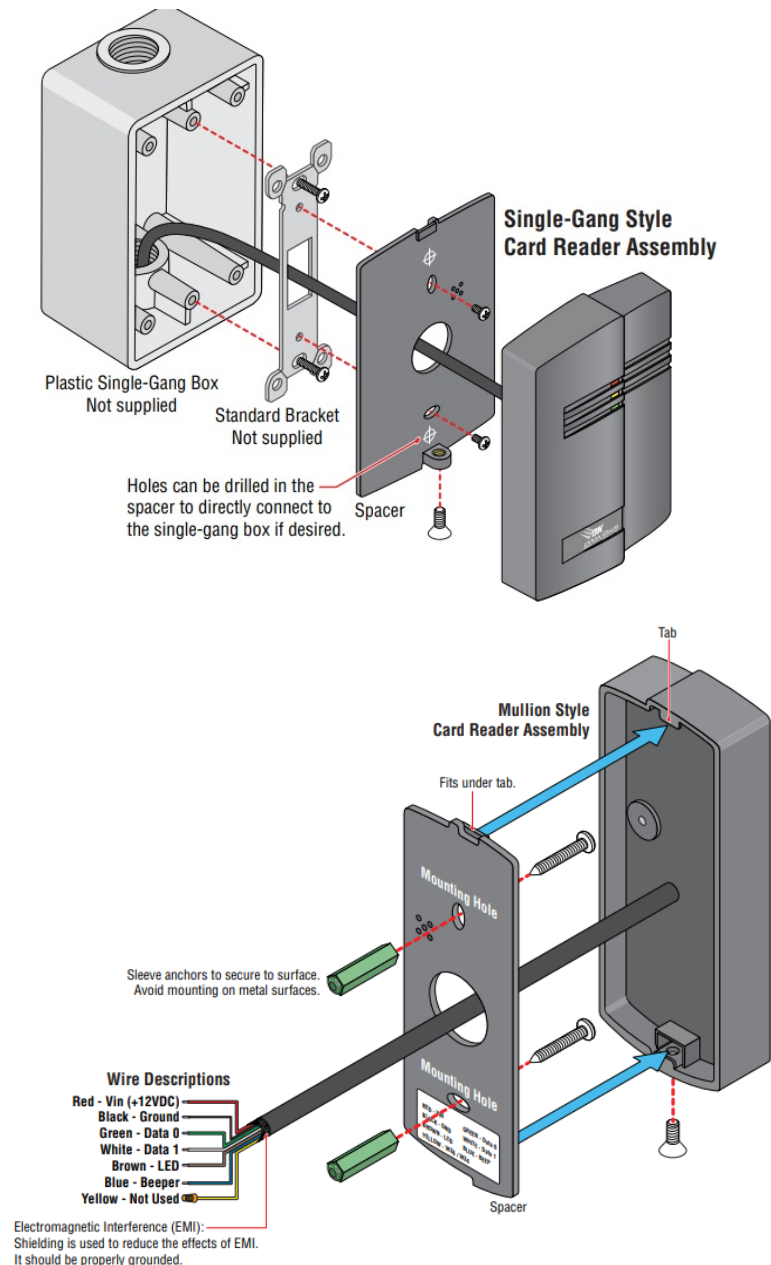
Installation

Mount the card reader using the hardware provided as shown in the diagrams below. Mount the spacer first, then mount the card reader. Read range will be reduced if the reader is installed on metal surfaces. Read range can also be affected by RF interference from power supplies, electrical and electronic equipment, some types of lighting, computers and monitors, motors and generators.

DO NOT mount the card reader to a moving gate, or immediately next to a gate panel or pedestrian gate. Continuous vibration from slamming gates and vibration can cause damage to the system over time.

WARNING! If the card reader is used to activate a vehicular gate operator, it must be mounted a minimum of 6 feet away from the gate and gate operator, or in such a way that the user cannot come into contact with the gate or gate operator while using the card reader.

12 VDC power must be available at the card reader (long cable runs have a voltage drop due to the resistance in the cable). A larger wire gauge (having less resistance) or a separate UL listed power supply near the card reader may be required to ensure that 12 VDC power is available at the card reader or problems may occur



Current Draw: 200 mAmps

Read Range: Up to 1 inch (2.5 cm)

Disclaimer

ProxPlus™ Secure card readers and cards use an encrypted unique identifier code making duplication of cards almost impossible. ProxPlus™ Secure card readers will only operate with ProxPlus™ Secure cards. Mifare card readers will operate with Mifare Classic 4 or 7 byte UID cards. The readers are sealed in epoxy, making them

vandal-resistant and are ideal for both indoor and outdoor applications.



Documents / Resources

A technical diagram showing the installation of a DOORKING ProxPlus Secure Card Reader. It includes a side view of the reader being mounted onto a door frame, with labels for various components and wiring connections. A small inset shows a top-down view of the mounting bracket.	<p>DOORKING ProxPlus Secure Card Readers [pdf] Installation Guide ProxPlus, Secure Card Readers, ProxPlus Secure Card Readers</p>
--	---

Manuals+.