



# DONGGUAN PC176B Wireless Keyboard and Mouse Combo User Manual

[Home](#) » [Dongguan](#) » DONGGUAN PC176B Wireless Keyboard and Mouse Combo User Manual 

## DONGGUAN

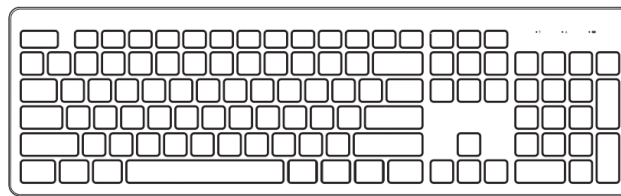
### WIRELESS KEYBOARD AND MOUSE COMBO User Manual



#### Contents

- [1 Package Contents](#)
- [2 Operation](#)
- [3 Specification](#)
- [4 Function](#)
- [5 Troubleshooting for Connection Failures](#)
- [6 Functions of multifunction buttons](#)
- [7 Consideration](#)
- [8 FCC STATEMENT](#)
- [9 Documents / Resources](#)
  - [9.1 References](#)

#### Package Contents



x1



x1



x1



x1

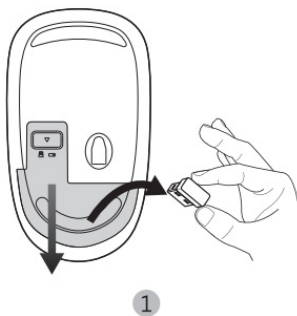
Keyboard x1

Mouse x1

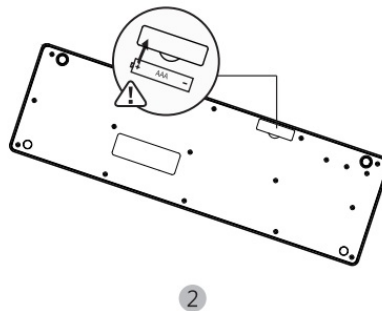
USB receiver x1 (inside the mouse battery compartment)

Manual x1

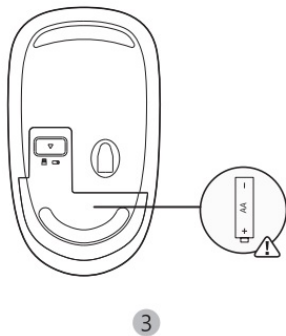
## Operation



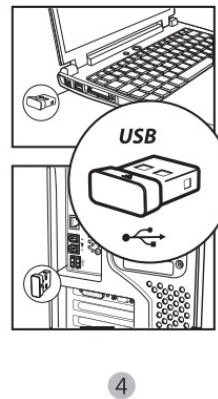
1



2



3



4

...

1. Fetch the wireless keyboard and mouse from the package and fetch the receiver from the mouse battery compartment.
2. Insert 1 AAA battery into the keyboard and 1 AA battery into the mouse in the right direction.
3. Plug the receiver into the USB port of your computer.
4. They start to serve when the computer installs driver automatically.

## Specification

### Keyboard

Working voltage:  $\leq 1.5\text{ V}$

Working current:  $\leq 3.0\text{mA}$

Net weight:  $499 \pm 10\text{g}$  (the battery and receiver are not included)

Size:  $448*136*24 \pm 1\text{mm}$

## Mouse

Working voltage:  $\leq 1.5V$

Working current:  $\leq 11mA$

Net weight:  $60 \pm 3g$  (include the receiver but not the battery)

Size:  $113*64*31 \pm 1mm$

## Function

1. Both the mouse and keyboard share the same receiver to connect to the computer.
2. Mouse CPI: 1200
3. Compatibility: Windows XP/ 7/ 8/ 10/ VISTA; Mac (The multifunction buttons of the keyboard are not available in Mac)

## Troubleshooting for Connection Failures

**Mouse:** Insert the battery and plug the receiver into your computer. The distance between the mouse and the receiver should be within 50 cm. Press the left button, scroll button and the right button of the mouse simultaneously for over 3 s to enter the pairing mode for the mouse. If the cursor moves when you move the mouse within 20 s, the pairing is complete.

**Keyboard:** Insert the battery and plug the receiver into the computer. The distance between the keyboard and the receiver should be within 50 cm. Press the "ESC" and "+/= " simultaneously for over 3 s to enter the pairing mode for the keyboard with the indicator light on. If the indicator light goes off within 20 s, the pairing is complete.

## Functions of multifunction buttons

Fn+F1	Fn+F2	Fn+F3	Fn+F4	Fn+F5	Fn+F6
Open the audio	Volume down	Volume up	Mute	Previous track	Next Track
Fn+F7	Fn+F8	Fn+F9	Fn+F10	Fn+F11	Fn+F12
Play/pause	Stop	Homepage	Email	My computer	Favorites

## Consideration

1. Only AAA alkaline battery can be used on the keyboard and only AA battery can be used on the mouse. If the product will be laid idle for a long time, take out the batteries to prevent from corrosion.
2. The working range is 10 meters for the 2.4 GHz transmission. However, the effective distance shortens when something obstructs it.

## FCC STATEMENT

Operation is subject to the following three conditions:

1. This device may not cause harmful interference, and
2. This device must accept any interference received, including interference that may cause undesired operation.
3. This device has been evaluated to meet general RF exposure requirement. The device can be used in portable exposure condition without restriction.


**Note:** This equipment has been tested and found to comply with the limits for a Class B digital device, pursuant to part 15 of the FCC Rules. These limits are designed to provide reasonable protection against harmful interference in a residential installation. This equipment generates, uses and can radiate radio frequency energy and, if not installed and used in accordance with the instructions, may cause harmful interference to radio communications. However, there is no guarantee that interference will not occur in a particular installation. If this equipment does cause harmful interference to radio or television reception, which can be determined by turning the equipment off and on, the user is encouraged to try to correct the interference by one or more of the following measures:

- Reorient or relocate the receiving antenna.
- Increase the separation between the equipment and receiver.
- Connect the equipment into an outlet on a circuit different from that to which the receiver is connected.
- Consult the dealer or an experienced radio/TV technician for help.

# DONGGUAN

---

## Documents / Resources

	<a href="#">DONGGUAN PC176B Wireless Keyboard and Mouse Combo</a> [pdf] User Manual 2A3JH-PC176B, 2A3JHPC176B, PC176B, PC176B Wireless Keyboard and Mouse Combo, Wireless Keyboard and Mouse Combo, Keyboard and Mouse Combo, Mouse Combo, Combo
---	---

## References

- [User Manual](#)

[Manuals+](#), [Privacy Policy](#)

This website is an independent publication and is neither affiliated with nor endorsed by any of the trademark owners. The "Bluetooth®" word mark and logos are registered trademarks owned by Bluetooth SIG, Inc. The "Wi-Fi®" word mark and logos are registered trademarks owned by the Wi-Fi Alliance. Any use of these marks on this website does not imply any affiliation with or endorsement.