



DONGGUAN PC176B-1 Wireless Keyboard and Mouse Combo User Manual

[Home](#) » [Dongguan](#) » DONGGUAN PC176B-1 Wireless Keyboard and Mouse Combo User Manual 

Contents

- 1 DONGGUAN PC176B-1 Wireless Keyboard and Mouse Combo
- 2 Product Information
- 3 Product Usage Instructions
- 4 Frequently Asked Questions
- 5 Package Contents
- 6 Operation
- 7 Operation
- 8 Specification
- 9 Function
- 10 Troubleshooting for Connection Failures
- 11 Functions of multifunction buttons
- 12 Consideration
- 13 FCC
- 14 Documents / Resources
 - 14.1 References



DONGGUAN PC176B-1 Wireless Keyboard and Mouse Combo



Product Information

Specifications

- Compliance: Part 15 of FCC Rules
- Radiation Exposure Limits: FCC approved
- Minimum Distance: 0cm between radiator and body

Product Usage Instructions

Installation

1. Place the device on a stable surface.
2. Ensure there is a minimum distance of 0cm between the radiator of the device and your body.
3. Connect the device to a power source following the provided instructions.

Operation

1. Power on the device using the designated switch or button.
2. Follow the specific operating instructions for the desired function.
3. Ensure the device is not causing harmful interference to other electronic equipment.

Maintenance

1. Regularly clean the device using a soft cloth.

2. Avoid exposing the device to extreme temperatures or moisture.
3. Keep the device away from direct sunlight to prevent damage.

Frequently Asked Questions

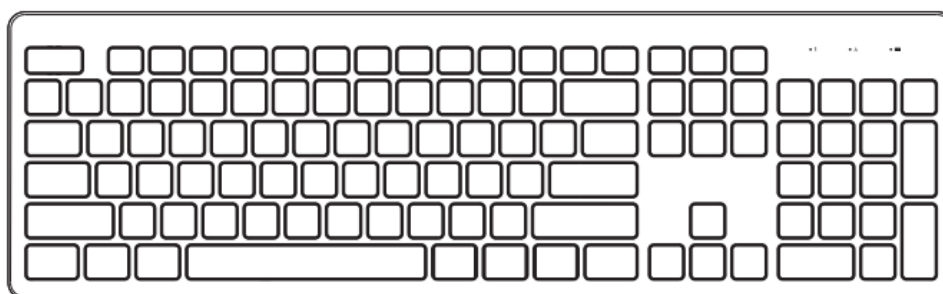
Can I modify the device?

Any changes or modifications to the device not approved by the manufacturer may void your warranty and authority to operate the equipment.

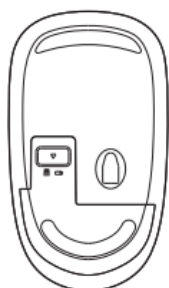
What should I do if the device causes interference?

If the device causes interference with other equipment, try repositioning it or contacting customer support for assistance.

Package Contents



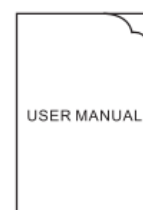
x1



x1



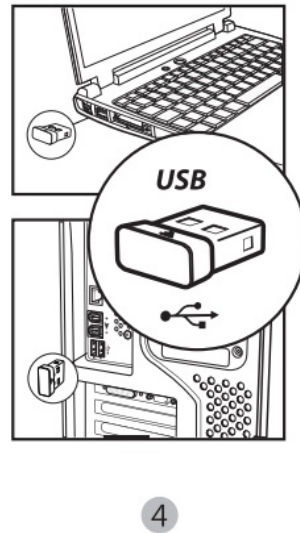
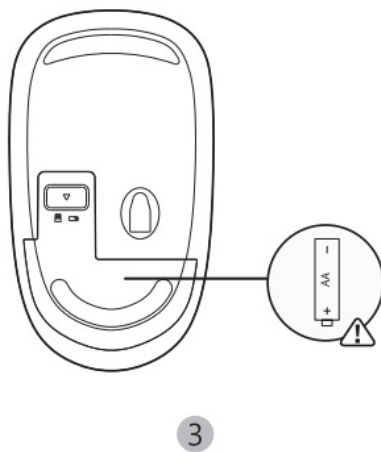
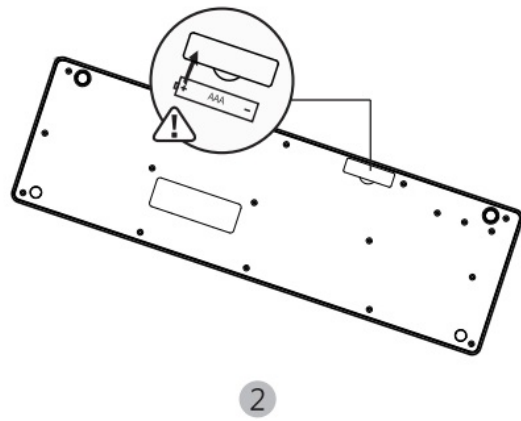
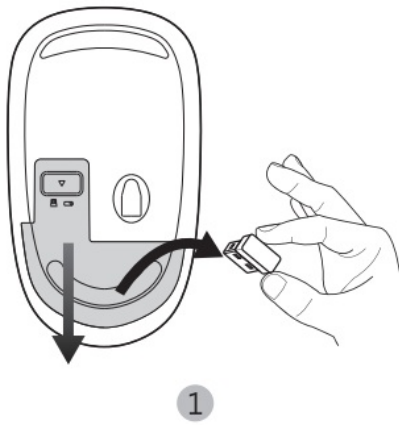
x1



x1

- Keyboard x1
- Mouse x1
- USB receiver x1
(inside the mouse battery compartment)
- Manual x1

Operation



...

Operation

1. Fetch the wireless keyboard and mouse from the package and fetch the receiver from the mouse battery compartment.
2. Insert 1 AAA battery into the keyboard and 1 AA battery into the mouse in the right direction.
3. Plug the receiver into the USB port of your computer.
4. They start to serve when the computer installs driver automatically.

Specification

Keyboard

- Working voltage: < 1.5 V
- Working current: < 3.0mA
- Net weight: 499 ± 10g (the battery and receiver are not included)
- Size: 448*136*24±1mm

Mouse

- **Working voltage:** ,,, 1.5V
- **Working current:** ,,, 11mA
- **Net weight:** 60±3g (include the receiver but not the battery)

- **Size:** 113*64*31±1mm

Function

1. Both the mouse and keyboard share the same receiver to connect to the computer.
2. Mouse CPI: 1200
3. Compatibility: Windows XP/ 7/ 8/ 10/ VISTA; Mac (The multifunction buttons of the keyboard are not available in Mac)

Troubleshooting for Connection Failures

- **Mouse:** Insert the battery and plug the receiver into your computer. The distance between the mouse and the receiver should be within 50 cm. Press the left button, scroll button and the right button of the mouse simultaneously for over 3 s to enter the pairing mode for the mouse. If the cursor moves when you move the mouse within 20 s, the pairing is complete.
- **Keyboard:** Insert the battery and plug the receiver into the computer. The distance between the keyboard and the receiver should be within 50 cm. Press the “ESC” and “+/=” simultaneously for over 3 s to enter the pairing mode for the keyboard with the indicator light on. If the indicator light goes off within 20 s, the pairing is complete.

Functions of multifunction buttons

Fn+F1	Fn+F2	Fn+F3	Fn+F4	Fn+F5	Fn+F6
Open the audio	Volume down	Volume up	Mute	Previous track	Next Track
Fn+F7	Fn+F8	Fn+F9	Fn+F10	Fn+F11	Fn+F12
Play/pause	Stop	Homepage	Email	My computer	Favorites

Consideration

1. Only AAA alkaline battery can be used on the keyboard and only AA battery can be used on the mouse. If the product will be laid idle for a long time, take out the batteries to prevent from corrosion.
2. The working range is 10 meters for the 2.4 GHz transmission. However, the effective distance shortens when something obstructs it.

FCC

FCC Warning:

This equipment has been tested and found to comply with the limits for a Class B digital device, pursuant to part 15 of the FCC Rules. These limits are designed to provide reasonable protection against harmful interference in a residential installation. This equipment generates, uses and can radiate radio frequency energy and, if not installed and used in accordance with the instructions, may cause harmful interference to radio communications. However, there is no guarantee that interference will not occur in a particular installation. If this equipment does cause harmful interference to radio or television reception, which can be determined by turning the equipment off and on, the user is encouraged to try to correct the interference by one or more of the following measures:

- Reorient or relocate the receiving antenna.
- Increase the separation between the equipment and receiver.
- Connect the equipment into an outlet on a circuit different from that to which the receiver is connected.
- Consult the dealer or an experienced radio/TV technician for help.


Caution: Any changes or modifications to this device not explicitly approved by manufacturer could void your authority to operate this equipment.

This device complies with part 15 of the FCC Rules. Operation is subject to the following two conditions:

(1) This device may not cause harmful interference, and (2) this device must accept any interference received, including interference that may cause undesired operation.

This equipment complies with FCC radiation exposure limits set forth for an uncontrolled environment. This equipment should be installed and operated with minimum distance 0cm between the radiator and your body.

Documents / Resources

	DONGGUAN PC176B-1 Wireless Keyboard and Mouse Combo [pdf] User Manual PC176B-1 Wireless Keyboard and Mouse Combo, PC176B-1, Wireless Keyboard and Mouse Combo, Keyboard and Mouse Combo, Mouse Combo, Combo
---	--

References

- [User Manual](#)

[Manuals+](#), [Privacy Policy](#)

This website is an independent publication and is neither affiliated with nor endorsed by any of the trademark owners. The "Bluetooth®" word mark and logos are registered trademarks owned by Bluetooth SIG, Inc. The "Wi-Fi®" word mark and logos are registered trademarks owned by the Wi-Fi Alliance. Any use of these marks on this website does not imply any affiliation with or endorsement.