

Dongguan
**JS4 Wireless
Audio Adapter**



Dongguan JS4 Wireless Audio Adapter User Manual

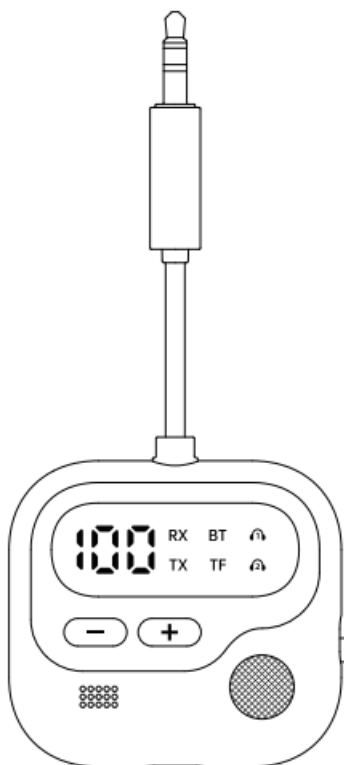
[Home](#) » [Dongguan](#) » Dongguan JS4 Wireless Audio Adapter User Manual 

Contents

- [1 Dongguan JS4 Wireless Audio Adapter](#)
- [2 Operation instructions](#)
- [3 Basic parameters](#)
- [4 Packing list](#)
- [5 Product diagram](#)
- [6 Pairing operation](#)
- [7 Safety Criterion](#)
- [8 Warranty card](#)
- [9 FCC STATEMENT](#)
- [10 Frequently Asked Questions](#)
- [11 Documents / Resources](#)
 - [11.1 References](#)
- [12 Related Posts](#)

Dongguan

Dongguan JS4 Wireless Audio Adapter



Operation instructions

Wireless audio adapter

Basic parameters

- Basic parameters
- Name: Wireless Audio Adapter
- Model: JS4
- Audio decoding: SBC
- Supported protocols: HSP, HFP, A2DP, AVRCP

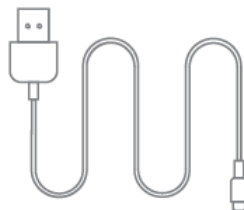
- Transmission range: \leq 10m
- Product input: 5V/1A
- Input port: AUX
- Product size: 114.5mm*51mm*14.6mm
- Product material: ABS

Packing list

wireless
adapter



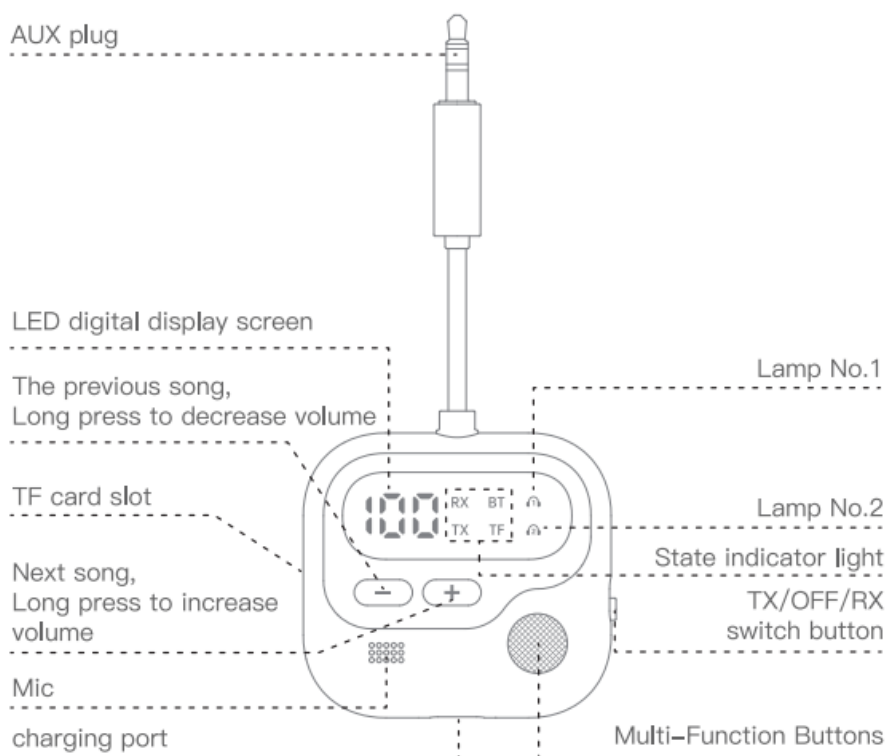
USB charging
cable



manual &
Warranty Card



Product diagram



Pairing operation

TX Mode (wireless transmit mode)

1. Firstly, insert the adapter into the headphone jack of the entertainment device you need to connect to;
2. Push the mode button to TX, where the TX light stays on and the 1st and 2nd lights flash;
3. Turn on the wireless device and adjust it to wireless pairing mode;
4. Double click the multifunction key to search for wireless, and the first and second lights will flash. After successful connection, the first light will remain on. Double click to search for the second device, and the second light will flash. After successful connection of the second device, the second light will remain on. Double

click again to disconnect wireless.

(The first connection may take a few seconds, and it will automatically connect the next time the connection is successful.)

5. Long press the multifunction key to switch between AUX and TF card modes

Note:

If pairing fails, you can turn off the power and then restart the wireless adapter and wireless headphones/Wireless speaker, repeat the above steps, and then try several times; If you are using this product on a TV, please confirm which RCA connector is the audio output port. The device needs to be connected to an RCA or 3.5mm audio output port instead of an audio input port.

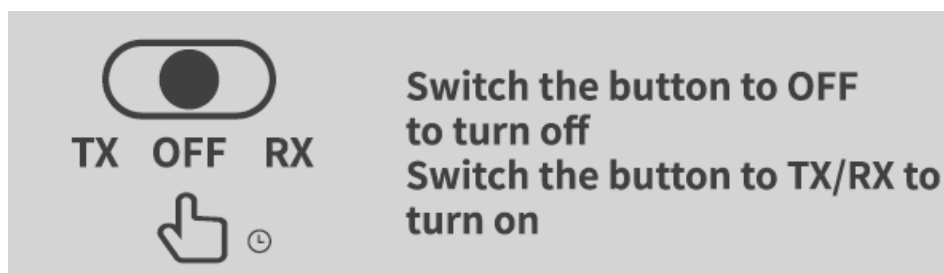
RX Mode (wireless receive mode)

1. Firstly, insert the adapter into the AUX-IN port of the speaker;
2. Push the mode button to RX, the RX light stays on, and lights 1 and 2 flash;
3. When the adapter is waiting for pairing, open the wireless settings on the phone, search for "JS4", and select pairing;
4. After the first phone is successfully connected, the first light stays on, and after the second phone is successfully connected, the second light stays on. Once the connection is successful, you can use the adapter to play music wirelessly.
(The first connection may take a few seconds, and it will automatically connect the next time the connection is successful.)
5. Long press the multifunction key to switch between wireless and TF cards;
6. When in TF card mode, the TF card light is always on, and the BT/1/2 lights are off;
7. Your phone was successfully paired for the first time and will automatically reconnect to your phone the next time it is turned on.

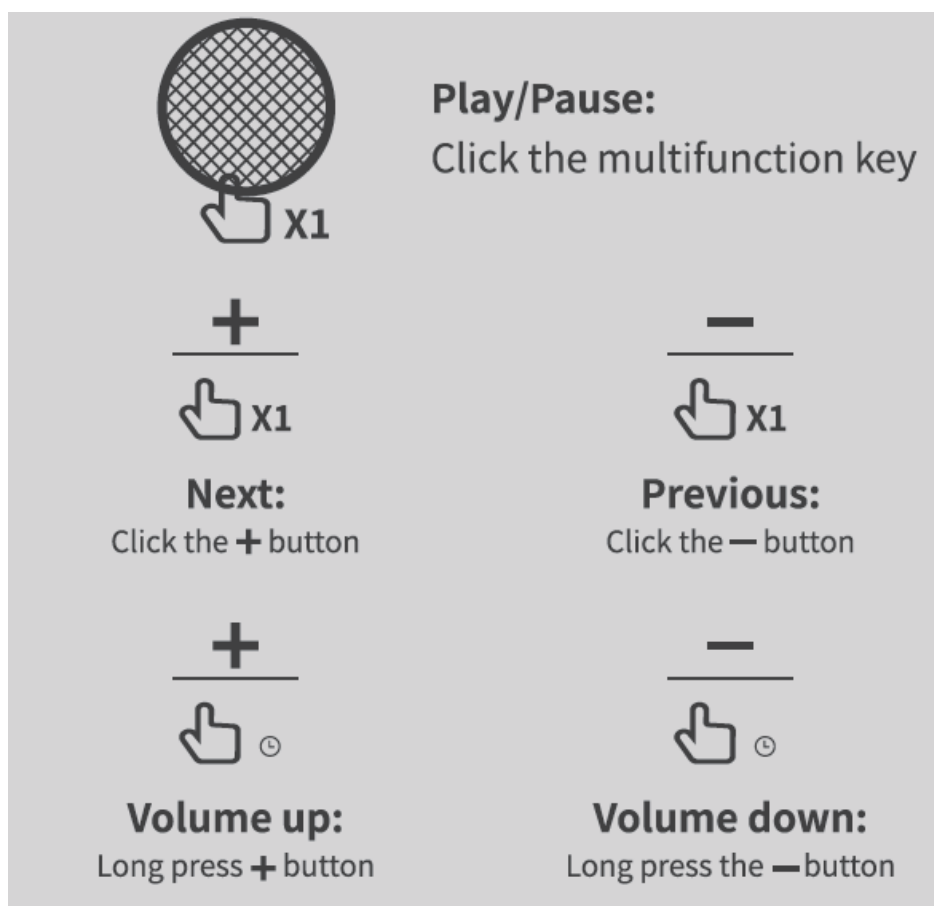


Operation instructions

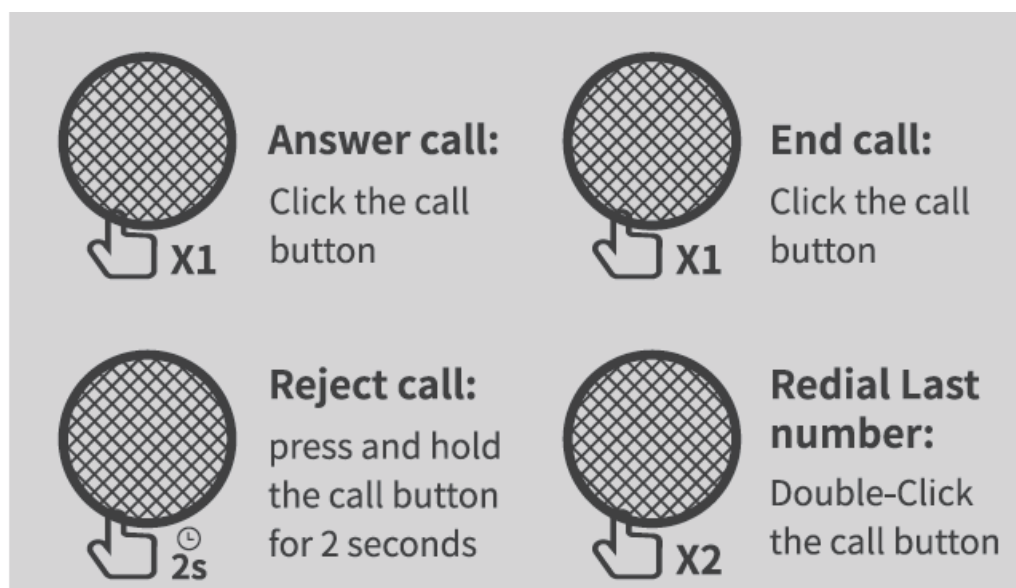
1. Turn on/off



2. Music Function



3. Call Function



Safety Criterion

1. Please follow the instructions in this manual and do not disassemble or modify the equipment for any reason, otherwise it may cause the adapter to malfunction Malfunctioning or burning;
2. Do not immerse the product in any liquid or rinse the product with water;
3. Please use a charging cable that meets national/regional safety standards to charge the adapter, otherwise it may cause damage to the adapter battery Damage or danger;
4. Please use and store this product in a room temperature environment, and do not place the equipment in an environment with low or high temperatures;
5. Do not use the equipment in thunderstorm weather, as thunderstorms can cause abnormal operation of the equipment, signal interruption, and other phenomena.

Warranty card

- User Name:
- User Tel:
- User address (with postcode):
- Purchase of date :
- Invoice NO.:
- Dealer Name:

FCC STATEMENT

NOTE: This equipment has been tested and found to comply with the limits for a Class B digital device, pursuant to part 15 of the FCC Rules. These limits are designed to provide reasonable protection against harmful interference in a residential installation. This equipment generates, uses and can radiate radio frequency energy and, if not installed and used in accordance with the instructions, may cause harmful interference to radio communications. However, there is no guarantee that interference will not occur in a particular installation. If this equipment does cause harmful interference to radio or television reception, which can be determined by turning the equipment off and on, the user is encouraged to try to correct the interference by one or more of the following measures:

- Reorient or relocate the receiving antenna.
- Increase the separation between the equipment and receiver.
- Connect the equipment into an outlet on a circuit different from that to which the receiver is connected.
- Consult the dealer or an experienced radio/TV technician for help.

Changes or modifications not expressly approved by the party responsible for compliance could void the user's authority to operate the equipment.

This device complies with Part 15 of the FCC Rules.

Operation is subject to the following two conditions:

1. This device may not cause harmful interference, and
2. This device must accept any interference received, including interference that may cause undesired operation.

Frequently Asked Questions


- **Q: What should I do if I experience interference while using the device?**

A: If you encounter interference, try relocating the device to a different area away from potential sources of interference. Ensure all connections are secure and cables are not damaged.

- **Q: Is this device compatible with all power sources?**

A: This device is designed to work with standard power sources that meet the specified requirements. Always use the provided cables and adapters for optimal performance.

Documents / Resources

	Dongguan JS4 Wireless Audio Adapter [pdf] User Manual 2A4WA-JS4, 2A4WAJS4, js4, JS4 Wireless Audio Adapter, JS4, Wireless Audio Adapter, Audio Adapter, Adapter
---	--

References

- [User Manual](#)

[Manuals+](#), [Privacy Policy](#)

This website is an independent publication and is neither affiliated with nor endorsed by any of the trademark owners. The "Bluetooth®" word mark and logos are registered trademarks owned by Bluetooth SIG, Inc. The "Wi-Fi®" word mark and logos are registered trademarks owned by the Wi-Fi Alliance. Any use of these marks on this website does not imply any affiliation with or endorsement.