



DONGGUAN iK6632 Wireless Keyboard and Mouse Combo Instruction Manual

[Home](#) » [Dongguan](#) » DONGGUAN iK6632 Wireless Keyboard and Mouse Combo Instruction Manual 

Contents

1 DONGGUAN iK6632 Wireless Keyboard and Mouse Combo

2 Package desktop

3 Basic Parameters

4 System requirements

5 FCC Caution

6 Documents / Resources

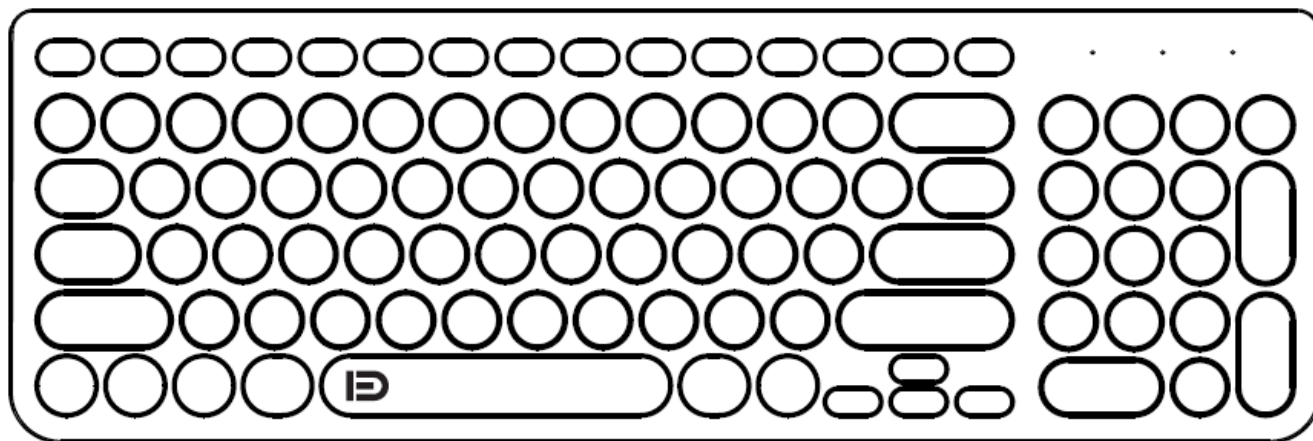
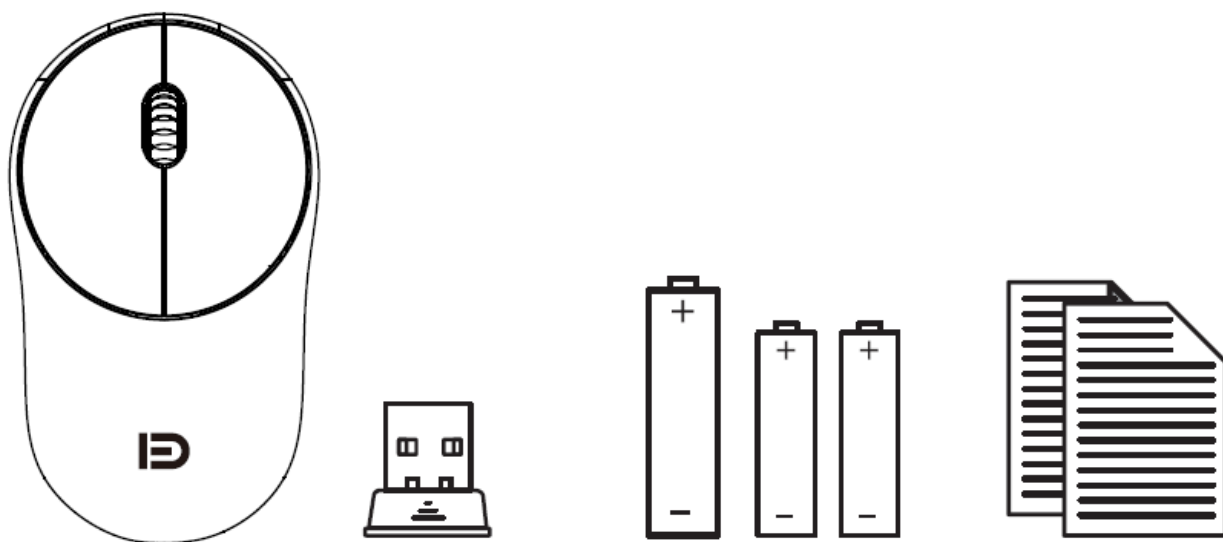
6.1 References



DONGGUAN iK6632 Wireless Keyboard and Mouse Combo



Package desktop



- Nano Receiver
- 1 section of AAA alkaline batteries
- 1 section of AA alkaline batteries
- Quick start guide
- FD Wireless package

Basic Parameters

Mouse basic parameters:

- Wireless data transmission: 2Mbps
- Frequency: 2402-2480MHz
- Channel: 40
- Engine: no light
- Distance: 20m
- Working voltage: 1.5V
- Working current: 11mA
- Mouse button life: more than 3 million

- Mouse size: 106x62x40mm

Mouse tracking performance

- Mouse resolution: 1600DPI
- Mouse return rate: 500Hz

Mouse step operating current

- Working current = 11mA
- Standby current = 1.3mA
- Sleep current = 50uA
- No reception status <30uA

Keyboard basic parameters

- Wireless data transmission: 2Mbps
- Frequency: 2402-2480MHz
- Channel: 40
- Distance: 8 – 10m
- Working voltage: 1.5V
- Working current: < 5mA
- Keyboard button life: More than 5 million
- Keyboard size: 381x126x28mm

Keyboard step operating current:

- Working current = < 5mA
- Standby current = < 1mA

System requirements

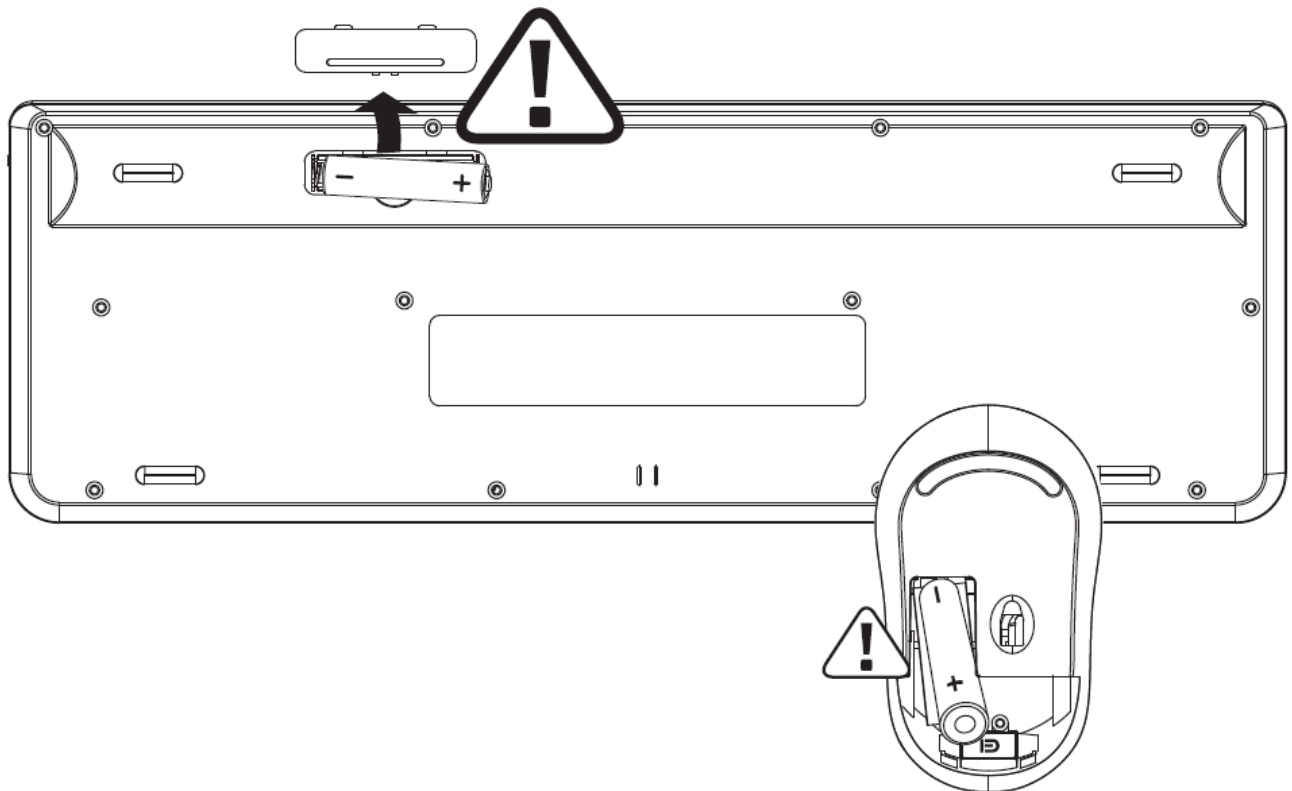
- System combination
- IBM or compatible calculator
- Windows: 2000/XP(X64)/Vista/7/8/10
- Mac OS X (More than V10.4)
- A workable USB interface

Warranty term

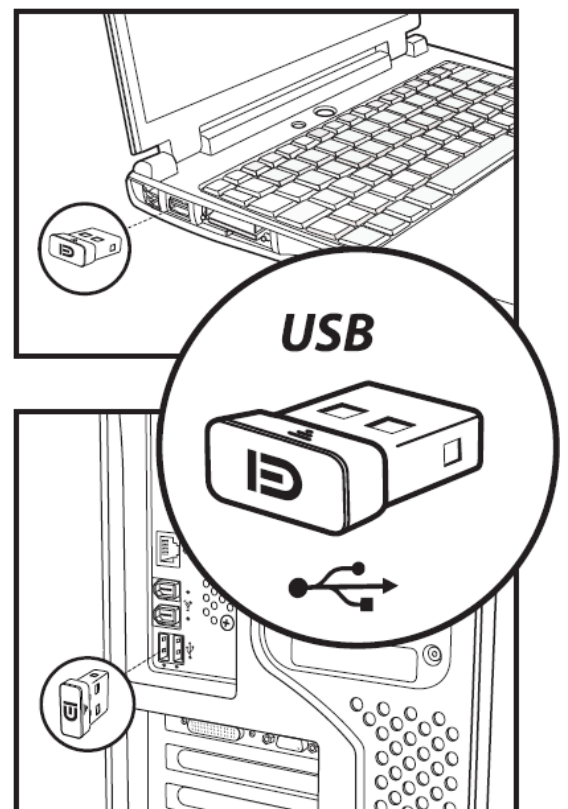
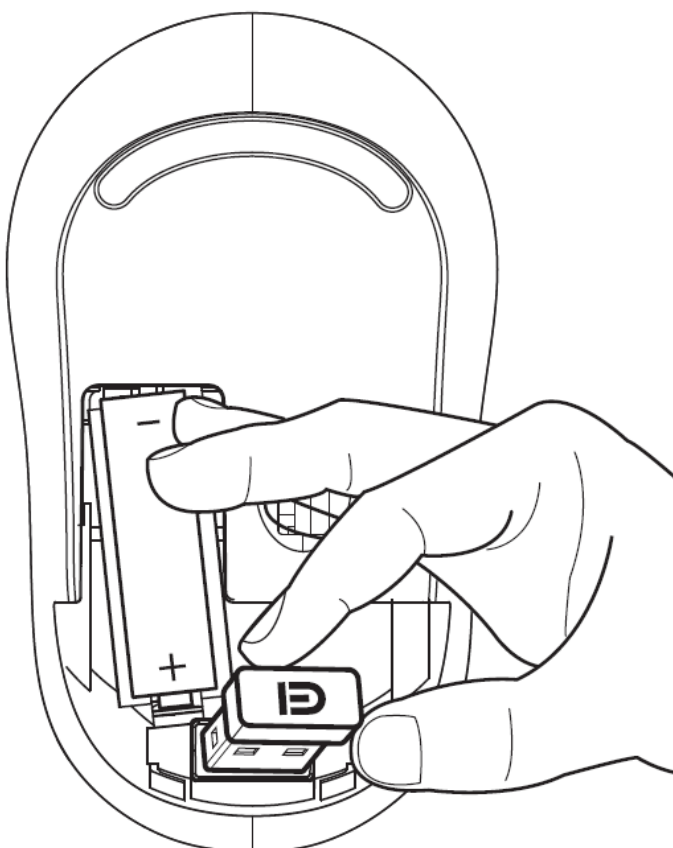
- The equipment is provided with a limited product hardware warranty service for 1 year from the date of purchase.

Security reminder,

Please do not open or repair the equipment. Please do not use the equipment in a wet environment. Please wipe the equipment using cloth



1. Open the battery cover, remove the insulation rubber, install the battery (note the +/- electrodes)
2. Take out the receiver
3. Insert it into the USB port of computer



Warranty Restrictions

The limited warranty doesn't cover the problems or damages due to the following causes:

1. Accidents, misuse, improper operation, or any unauthorized maintenance, modification, or dismantling;
2. Improper operation or maintenance, violation of the product description during the application, or improper connection of voltage source;

Compensation

1. In case of quality problems within 7 days, according to the "three guarantees" stipulated by the country, the hardware will be returned to the purchase place under the intact appearance and packaging of the product, and the payment for the bought hardware will be returned when presenting the valid voucher for purchase.
2. In case of quality problems within 60 days, the hardware product can be replaced at the purchase place or repaired at the specified repairing block, and the expiration date of the replaced hardware is the remaining days.
3. In case of quality problems within 1 year, the product can be repaired at the specified repair block.

- warranty period
- Date of purchase
- Where to buy
- Product Serial Number
- Product Number
- stamp
- date
- Maintenance situation

Operator: Dongguan Zhenghao Electronic Technology Co. LTD



- Address: Room 302, Building 6, No. 8 Xiegang Xinlong Road, Xiegang Town, Dongguan City, Guangdong
- Service Tel: + 86- [400-915-2528](tel:4009152528)
- Web: www.szforter.com
- Mouse Executive Standards: GB/T 26245-2010
- Keyboard Executive Standards: GB/T 14081-2010

FCC Caution

This device complies with part 15 of the FCC Rules. Operation is subject to the following two conditions:

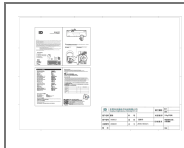
1. This device may not cause harmful interference, and
2. this device must accept any interference received, including interference that may cause undesired operation.

Any Changes or modifications not expressly approved by the party responsible for compliance could void the user's authority to operate the equipment.

Note: This equipment has been tested and found to comply with the limits for a Class B digital device, under part 15 of the FCC Rules. These limits are designed to provide reasonable protection against harmful interference in a residential installation. This equipment generates uses and can radiate radio frequency energy and, if not installed and used by the instructions, may cause harmful interference to radio communications. However, there is no guarantee that interference will not occur in a particular installation. If this equipment does cause harmful interference to radio or television reception, which can be determined by turning the equipment off and on, the user is encouraged to try to correct the interference by one or more of the following measures:

- Reorient or relocate the receiving antenna.
- Increase the separation between the equipment and the receiver.
- Connect the equipment to an outlet on a circuit different from that to which the receiver is connected.
- Consult the dealer or an experienced radio/TV technician for help.
- The device has been evaluated to meet general RF exposure requirements. The device can be used in portable exposure conditions without restriction.

Documents / Resources



[DONGGUAN iK6632 Wireless Keyboard and Mouse Combo](#) [pdf] Instruction Manual
iK6632, iK6632 Wireless Keyboard and Mouse Combo, Wireless Keyboard and Mouse Combo,
Keyboard and Mouse Combo, Mouse Combo, Combo

References

- [User Manual](#)

[Manuals+](#), [Privacy Policy](#)

This website is an independent publication and is neither affiliated with nor endorsed by any of the trademark owners. The "Bluetooth®" word mark and logos are registered trademarks owned by Bluetooth SIG, Inc. The "Wi-Fi®" word mark and logos are registered trademarks owned by the Wi-Fi Alliance. Any use of these marks on this website does not imply any affiliation with or endorsement.