



Dongguan A3648, A3598 Digital Wireless Backup Camera Systems User Manual

[Home](#) » [Dongguan](#) » Dongguan A3648, A3598 Digital Wireless Backup Camera Systems User Manual 



DIGITAL WIRELESS BACKUP
CAMERA SYSTEMS
User Manual
Installation Instructions



Contents

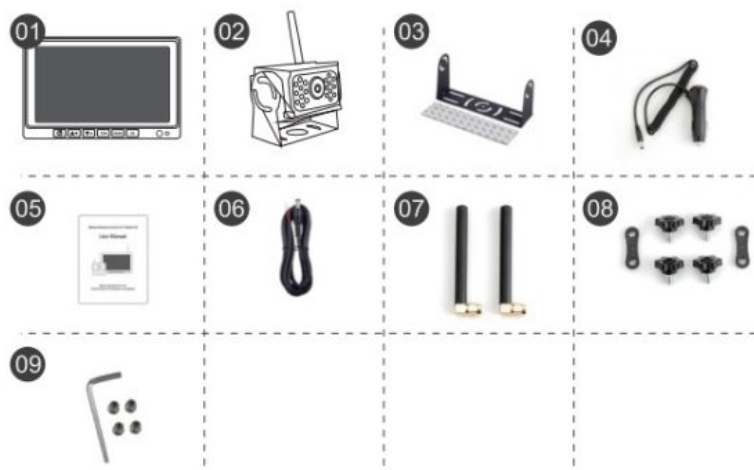
- 1 A3648, A3598 Digital Wireless Backup Camera Systems
- 2 What's in the Box?
- 3 Introduction
- 4 Monitor Operation
- 5 Installation Diagram
- 6 Connection method
- 7 Pairing the Camera and Monitor
- 8 Specifications
- 9 Troubleshooting
- 10 Documents / Resources
 - 10.1 References

A3648, A3598 Digital Wireless Backup Camera Systems

VEHICLE SAFETY SOLUTIONS

Before installation please read the manual

What's in the Box?



NOTE: The contents included may be different based on the kit you purchased. Please take the actual product as standard

- 1. 7-inch IPS Monitor
- 2. Camera
- 3. U-shaped bracket
- 4. Car Charger
- 5. User Manual
- 6. Power cable
- 7. Antenna
- 8. Accessories
- 9. Installation tool

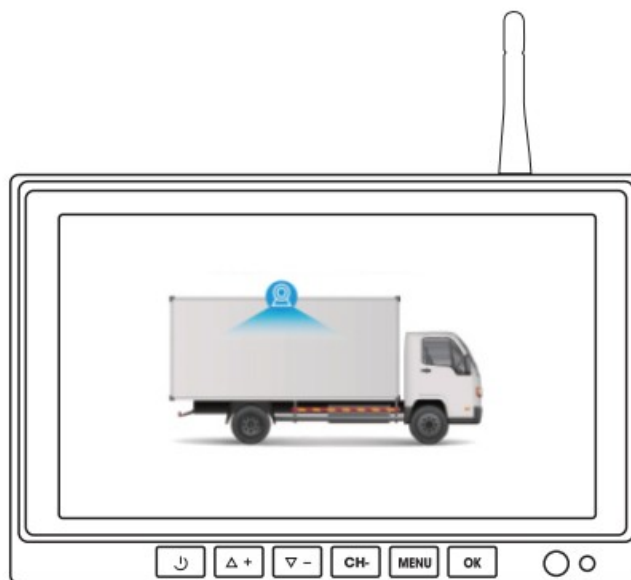
Introduction



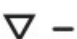
Please read all of the installation instructions carefully before installing the product. Improper installation will void manufacturer's warranty

Thank you very much for purchasing a Rear View Backup Camera System. With this manual you will be able to properly install and operate the unit.

The Backup Camera System is intended to be installed as a supplement aid to your standard rear view mirror that already exists in your vehicle. The Backup Camera System should not be used as a substitute for the standard rear view mirror or for any other mirror that exists in your vehicle. In some jurisdictions, it is unlawful for a person to drive a motor vehicle equipped with a TV viewer or screen located forward of the back of the driver's seat or in any location that is visible, directly or indirectly, to the driver while operating the vehicle.

Monitor Operation



Button	Function
	Use this button to turn the monitor On and Off
	Enter the menu left selection key
	Enter the menu right selection key
CH-	Switch channel
MENU	MENU
ENTER	Confirming

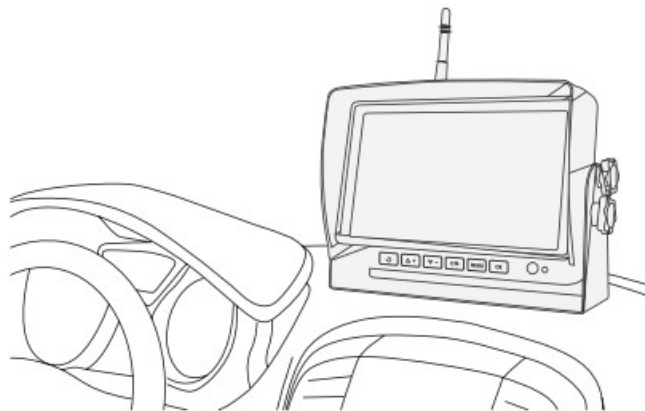


On the back of the monitor, you can insert an TF card.
It is recommended to use high-speed TF card of class 10 or above.(Less than 128G)
Plug in the card to start recording ,

Installation Diagram

- **Monitor Installation**

Choose a monitor location in your vehicle that does not block your view and complies with local laws for safe driving. Do not place in an area where it might interfere with driving.

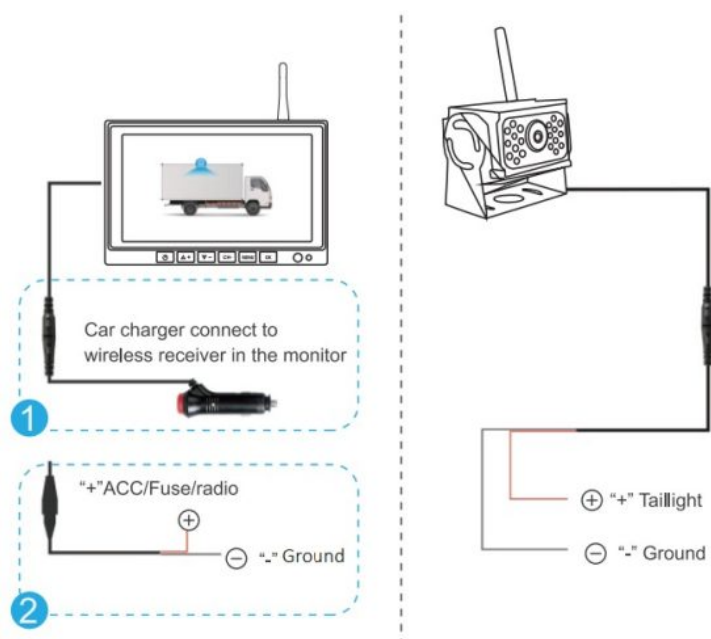


- **Camera Installation**

Suitable Installation Position



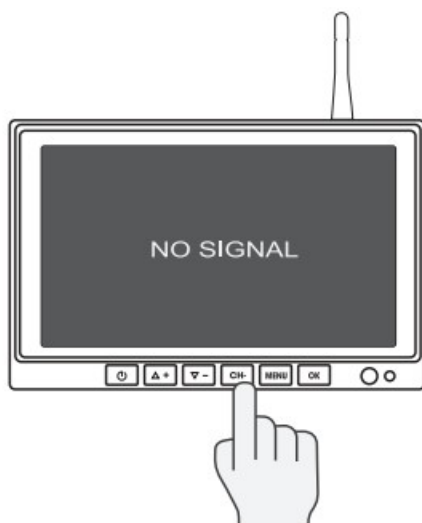
Connection method



Note: Of connecting power directly to battery, the cameras always ON and therefore candrain battery. Therefore it is recommended to connect power to an ignition switched accessory power source.

Pairing the Camera and Monitor

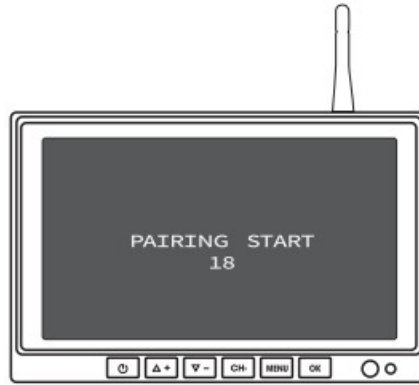
1.



Select the channel to be pairing



2. Enter the menu and select pairing



3. Start pairing



4. Waiting for matching and drawing successfully

NOTE: when you need pairing, please confirm the circuit is properly connected and powered. If you need to pairing multiple cameras, please switch to the corresponding channel.

Specifications

Power Supply	DC12 to 36V
Wireless Frequency	2.4 GHz
2.4G Wireless network range	2403-2480MHz
Wireless Range	500m(open area)
Delaying Time	<200ms
Operating temperature	-20°C — 80°C
CAMERA	
Image Sensor	1/3 inch
Waterproof Rating	IP68
View Angle	110°[H] 140°[D]
Camera Pixel	1000TVL
MONITOR	
LCD Size	7 inch IPS
Resolution	1024(H) x 600(V)
Contrast	500:1
Brightness	600cd/m ²
Response Time	25ms
Power Consumption	<500mA

Troubleshooting

Problem	Solution
Monitor Won't turn on	Check the cigarette lighter has 12-36V DC Output
	Check the fuse in the Cigarette socket adapter
Camera and Monitor won't pair	Check if the camera is receiving power
	Make sure to follow the instructions to operate the Pairing
Weak Signal	Check if the camera and monitor antennas are installed
	Distance between camera and monitor is too great. Reduce distance between camera and monitor
	Large dense objects could be obscuring the signal. If possible, move the objects
	Interference from overhead power lines may be affecting the signal
	Try unpairing and pairing
Night Vision is poor	The night sensor on the camera may be dirty or obstructed
	Ensure the camera is installed at least 2 inches away from rear lights
Dark Picture	Check whether brightness and contrast are adjusted correctly

FCC Statement

This device complies with part 15 of the FCC Rules. Operation is subject to the following two conditions: (1) This device may not cause harmful interference, and (2) this device must accept any interference received, including interference that may cause undesired operation.

Note: This equipment has been tested and found to comply with the limits for a Class B digital device, pursuant to part 15 of the FCC Rules. These limits are designed to provide reasonable protection against harmful interference in a residential installation. This equipment generates, uses and can radiate radio frequency energy and, if not installed and used in accordance with the instructions, may cause harmful interference to radio communications. However, there is no guarantee that interference will not occur in a particular installation. If this equipment does cause harmful interference to radio or television reception, which can be determined by turning the equipment off and on, the user is encouraged to try to correct the interference by one or more of the following measures:

- Reorient or relocate the receiving antenna.
- Increase the separation between the equipment and receiver.
- Connect the equipment into an outlet on a circuit different from that to which the receiver is connected.
- Consult the dealer or an experienced radio/TV technician for help.

Note: The Grantee is not responsible for any changes or modifications not expressly approved by the party responsible for compliance. such modifications could void the user's authority to operate the equipment. To maintain compliance with FCC's RF exposure guidelines, the distance must be at least 20 cm between the radiator and your body, and fully supported by the operating and installation configurations of the transmitter and its antenna(s).





[Dongguan A3648, A3598 Digital Wireless Backup Camera Systems](#) [pdf] User Manual 2BHXU-WX7001, 2BHXUWX7001, wx7001, A3648 A3598 Digital Wireless Backup Camera Systems, A3648 A3598, Digital Wireless Backup Camera Systems, Wireless Backup Camera Systems, Backup Camera Systems, Camera Systems, Systems

References

- [User Manual](#)

[Manuals+](#), [Privacy Policy](#)

This website is an independent publication and is neither affiliated with nor endorsed by any of the trademark owners. The "Bluetooth®" word mark and logos are registered trademarks owned by Bluetooth SIG, Inc. The "Wi-Fi®" word mark and logos are registered trademarks owned by the Wi-Fi Alliance. Any use of these marks on this website does not imply any affiliation with or endorsement.