

DONGCHENG DSA125 Random Orbital Sander Instruction Manual

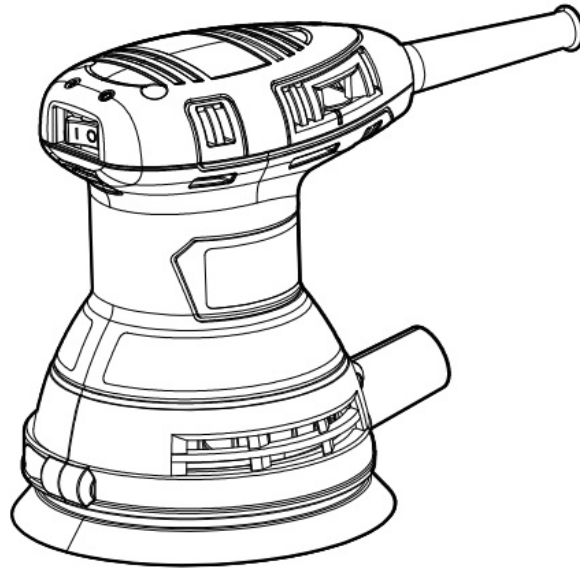
[Home](#) » [DONGCHENG](#) » DONGCHENG DSA125 Random Orbital Sander Instruction Manual 

Contents

- 1 DONGCHENG DSA125 Random Orbital Sander
- 2 Product Information
- 3 Specifications
- 4 Product Usage Instructions
- 5 FAQ (Frequently Asked Questions)
- 6 INTRODUCTION
- 7 General power tool safety warnings
- 8 ADDITIONAL SAFETY RULES
- 9 DESCRIPTION OF SYMBOLS
- 10 Technical data
- 11 Intended Use
- 12 Instructions for Operation
- 13 Maintenance and Care
- 14 EXPLODED VIEW
- 15 ABOUT COMPANY
- 16 Documents / Resources
 - 16.1 References
- 17 Related Posts

Dong Cheng
PROFESSIONAL POWER TOOLS

DONGCHENG DSA125 Random Orbital Sander



Product Information

- **Product Name:** DSA125 ASA125 KSA125
- **Description:** This is a power tool that can be operated using mains power or battery power.

Specifications

- **Power Source:** Mains-operated (corded) or battery-operated (cordless)
- **Voltage:** Check the voltage specified on the nameplate of the machine before connecting to a power source

Product Usage Instructions

Work Area Safety

- Keep your work area clean and well lit to avoid accidents.
- Do not operate the power tool in explosive atmospheres where there are flammable liquids, gases, or dust. Sparks from the power tool can ignite the dust or fumes.
- Keep children and bystanders away from the work area to prevent distractions that may lead to loss of control.

General Power Tool Safety Warnings

Read all safety warnings, instructions, illustrations, and specifications provided with this power tool to ensure safe operation and prevent electric shock, fire, and serious injury.

Electrical Safety

- Ensure that the power tool plugs match the outlet and never modify the plug. Do not use adapter plugs with earthed (grounded) power tools. Using unmodified plugs and matching outlets reduces the risk of electric shock.
- Avoid body contact with live electrical parts of the power tool.

Personal Safety

- Stay alert, watch what you are doing, and use common sense when operating the power tool.
- Dress properly by avoiding loose clothing, jewelry, and keeping hair and clothing away from moving parts.
- If provided, connect and properly use dust extraction and collection facilities to reduce dust-related hazards.
- Do not become complacent due to familiarity with the tool. Always follow tool safety principles to prevent severe injury.

Power Tool Use and Care

- Do not force the power tool. Use the correct power tool for your application to ensure better and safer performance.
- Do not use the tool if the switch does not turn it on or off. A power tool that cannot be controlled with the switch is dangerous and needs repair.
- Disconnect the plug from the power source before making any adjustments, changing accessories, or storing the tool.
- Use the power tool only for its intended operations. Using it for other purposes can result in hazardous situations.
- Keep handles and grasping surfaces dry, clean, and free from oil and grease to ensure safe handling and control of the tool.

Service

Have your power tool serviced by a qualified repair person using only identical replacement parts to maintain its safety.

FAQ (Frequently Asked Questions)

• What should I do if the power tool does not turn on or off with the switch?

If the power tool cannot be controlled with the switch, it is dangerous and must be repaired.

• Can I use the power tool in explosive atmospheres?

No, power tools should not be operated in explosive atmospheres where there are flammable liquids, gases, or dust.

• How should I dress when operating the power tool?

Avoid wearing loose clothing or jewelry and keep your hair and clothing away from moving parts to prevent accidents.

• Can I use the power tool for operations other than those intended?

No, using the power tool for operations different from those intended could result in a hazardous situation.

INTRODUCTION

- Some dust created by power sanding, sawing, grinding, drilling, and other construction activities contains chemicals known to cause cancer, birth defects or other reproductive harm. Some examples of these chemicals are:
 - Lead from lead-based paints,
 - Crystalline silica from bricks and cement and other masonry products, and
 - Arsenic and chromium from chemically treated lumber.

- Your risk from these exposures varies, depending on how often you do this type of work. To reduce your exposure to these chemicals: work in a well ventilated area, and work with approved safety equipment, such as those dust masks that are specially designed to filter out microscopic particles.
- For more information go to www.P65Warnings.ca.gov.

General power tool safety warnings

WARNING Read all safety warnings, instructions, illustrations and specifications provided with this power tool. Failure to follow all instructions listed below may result in electric shock, fire and/or serious injury. Save all warnings and instructions for future reference.

The term “power tool” in the warnings refers to your mains-operated (corded) power tool or battery-operated (cordless) power tool.

1. Work area safety

- Keep work area clean and well lit. Cluttered or dark areas invite accidents.
- Do not operate power tools in explosive atmospheres, such as in the presence of flammable liquids, gases or dust. Power tools create sparks which may ignite the dust or fumes.
- Keep children and bystanders away while operating a power tool. Distractions can cause you to lose control.

2. Electrical safety

- Power tool plugs must match the outlet. Never modify the plug in any way. Do not use any adapter plugs with earthed (grounded) power tools. Unmodified plugs and matching outlets will reduce risk of electric shock.
- Avoid body contact with earthed or grounded surfaces, such as pipes, radiators, ranges and refrigerators. There is an increased risk of electric shock if your body is earthed or grounded.
- Do not expose power tools to rain or wet conditions. Water entering a power tool will increase the risk of electric shock.
- Do not abuse the cord. Never use the cord for carrying, pulling or unplugging the power tool. Keep cord away from heat, oil, sharp edges or moving parts. Damaged or entangled cords increase the risk of electric shock.
- When operating a power tool outdoors, use an extension cord suitable for outdoor use. Use of a cord suitable for outdoor use reduces the risk of electric shock.
- If operating a power tool in a damp location is unavoidable, use a residual current device (RCD) protected supply. Use of an RCD reduces the risk of electric shock.

3. Personal safety

- Stay alert, watch what you are doing and use common sense when operating a power tool. Do not use a power tool while you are tired or under the influence of drugs, alcohol or medication. A moment of inattention while operating power tools may result in serious personal injury.
- Use personal protective equipment. Always wear eye protection. Protective equipment such as a dust mask, non-skid safety shoes, hard hat or hearing protection used for appropriate conditions will reduce personal injuries.
- Prevent unintentional starting. Ensure the switch is in the off-position before connecting to power source and/or battery pack, picking up or carrying the tool. Carrying power tools with your finger on the switch or energising power tools that have the switch on invites accidents.
- Remove any adjusting key or wrench before turning the power tool on. A wrench or a key left attached to

a rotating part of the power tool may result in personal injury.

- Do not overreach. Keep proper footing and balance at all times. This enables better control of the power tool in unexpected situations.
- Dress properly. Do not wear loose clothing or jewellery. Keep your hair and clothing away from moving parts. Loose clothes, jewellery or long hair can be caught in moving parts.
- If devices are provided for the connection of dust extraction and collection facilities, ensure these are connected and properly used. Use of dust collection can reduce dust-related hazards.
- Do not let familiarity gained from frequent use of tools allow you to become complacent and ignore tool safety principles. A careless action can cause severe injury within a fraction of a second.

4. Power tool use and care

- Do not force the power tool. Use the correct power tool for your application. The correct power tool will do the job better and safer at the rate for which it was designed.
- Do not use tool if switch does not turn it on or off. Any power tool that cannot be controlled with the switch is dangerous and must be repaired.
- Disconnect the plug from the power source and/or remove the battery pack, if detachable, from the power tool before making any adjustments, changing accessories, or storing power tools. Such preventive safety measures reduce the risk of starting the power tool accidentally.
- Store idle power tools out of the reach of children and do not allow persons unfamiliar with the power tool or these instructions to operate the power tool. Power tools are dangerous in the hands of untrained users.
- Maintain power tools and accessories. Check for misalignment or binding of moving parts, breakage of parts and any other condition that may affect the power tool's operation. If damaged, have the power tool repaired before use. Many accidents are caused by poorly maintained power tools.
- Keep cutting tools sharp and clean. Properly maintained cutting tools with sharp cutting edges are less likely to bind and are easier to control.
- Use the power tool, accessories and tool bits etc. in accordance with these instructions, taking into account the working conditions and the work to be performed. Use of the power tool for operations different from those intended could result in a hazardous situation.
- Keep handles and grasping surfaces dry, clean and free from oil and grease. Slippery handles and grasping surfaces do not allow for safe handling and control of the tool in unexpected situations.

5. Service

Have your power tool serviced by a qualified repair person using only identical replacement parts. This will ensure that the safety of the power tool is maintained.

VOLTAGE WARNING:

Before connecting the machine to a power source (receptacle, outlet, etc.), be sure the voltage supplied is the same as that specified on the nameplate of the machine. A power source with voltage greater than that specified for the machine can result in **SERIOUS INJURY** to the user, as well as damage to the machine. If in doubt, **DO NOT PLUG IN THE MACHINE**. Using a power source with voltage less than nameplate rating is harmful to the motor.

ADDITIONAL SAFETY RULES

Instructions for All Operations

General Safety Warning for Sanding

- This tool is used for sanding. Read all safety warnings, instructions, diagrams and stipulations.
- This tool is not recommended to be used for some operations like cutting.
- Do not use the accessory recommended or specially designed by other manufacturers.
- The rated speed of the accessories must be at least no less than the maximum speed marked on the tool.
- The external diameter and thickness of the accessory must be within the rated capacity of the tool.
- The axle hole size of abrasive discs must in accordance with the spindle of the tool.
- Do not use damaged accessories. Check the accessories like abrasive discs to see whether there is debris and cracks before every use. Check whether it is damaged if the tool falls, or replace with a new accessory. After checking and installing the accessory, keep yourself and bystanders far away from the rotating accessory and run the tool for 1 minute under the maximum no-load speed.
- Wear protective equipment. Based on the situation, use mask, goggles or safety glasses. Wear dust mask, hearing protectors, gloves and apron which can protect you from some small segments or chips when applicable.
- Bystanders must keep a safe distance from the working area. Anyone who enters the working areas must wear protective equipments.
- Keep the soft lines far away from rotating parts.
- Do not lay down the tool until the accessory stops completely.
- Do not switch on the tool when carrying it.
- Clean the air vents of the tool often.
- Do not operate the tool near the inflammable materials.
- Do not use the accessories which need cooling liquid.

Further safety Instructions for All Operation

- Hold the tool firmly, and make sure your body and arms in a correct posture to resist bounce. If auxiliary handle is provided, always use it so as to maximum control the bounce or counter torque when the tool starts.
- Never get close to rotating parts.
- Do not stand on the place where the tool may move to when bouncing.
- Be very careful when working on the sharp corners or edges. Avoid you from accessories bouncing or twining.
- Do not attach the saw chain, blade or sawblade with teeth.

SAVE THESE INSTRUCTIONS

WARNING! MISUSE or failure to follow the safety rules stated in this instruction manual may cause serious personal injury.

DESCRIPTION OF SYMBOLS

The rating plate on your power tool may show symbols. These represent important information about the product or instructions on its use. Double insulated for additional protection.



WARNING



To reduce the risk of injury, user must read instruction manual



Always wear eye protection



Class II tool



Conformity of US
and CANADA

Technical data

DSA125/ASA125/KSA125 (The letter “SA” means Disk Sander)

- **Rated Power Input** 3 A
- **Rated No-load Speed** 4000-12000/min
- **Abrasive Disc Dia.** 125 mm
- **Net Weight** 1.4 kg

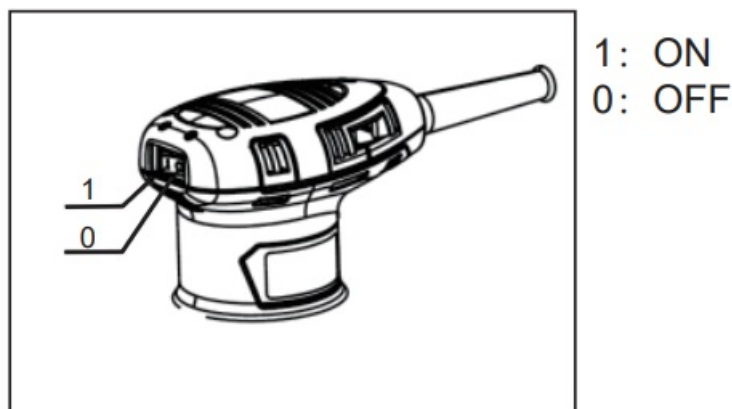
Intended Use

The machine is intended for dry sanding of wood, plastic, filler and coated surfaces.

Instructions for Operation

Switch Operation

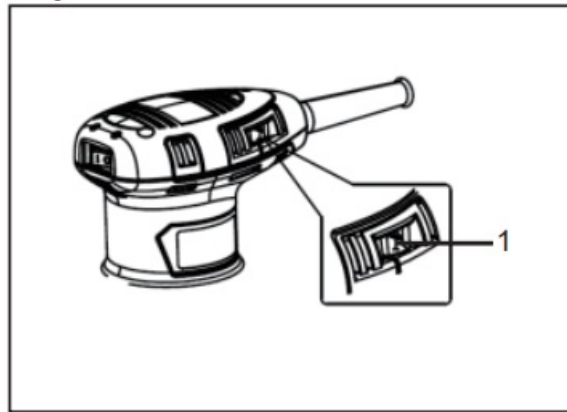
Caution Always be sure that the tool is switched off and unplugged before installing or removing the abrasive disc.



1. Before plugging in the tool, always check to see that the switch actuates properly and returns to the “OFF” position.
2. Set the switch to the position of “1” for more comfortable operation during operation. Always grip the tools firmly.
3. Push the switch to the position of “1”, the tool will be started. And push the switch to the position of “0” to stop machine.

Speed Control Dial

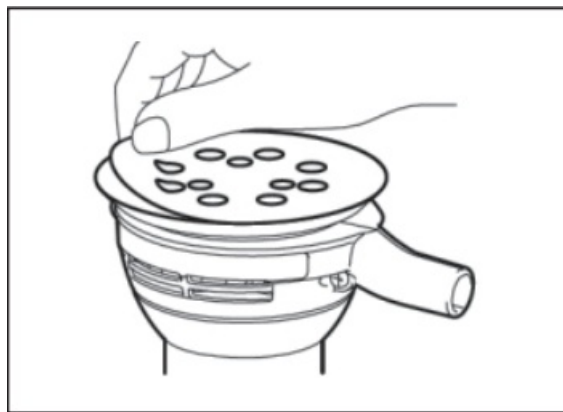
The rotation speed can be adjusted from 4000/min to 12000/min by turning the speed control dial. Higher speed is obtained when the dial is turned in the direction of number 6. And lower speed is obtained when it is turned in the direction of number 1.



Installing or Removing the Abrasive Paper

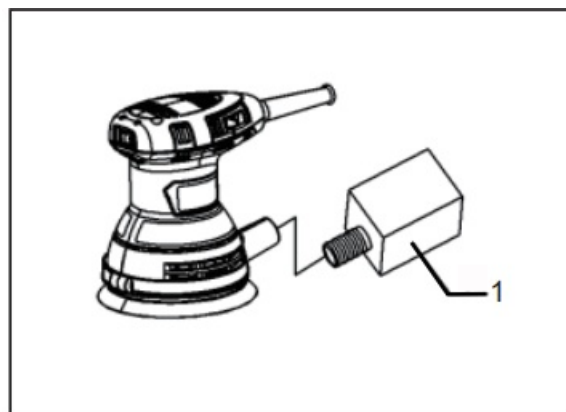
To install the abrasive paper, first remove all dirt or foreign matter from the pad. Then carefully align the holes in the abrasive paper with those in the pad and paste the abrasive paper firmly with your hand.

Caution: If you peel off the abrasive paper from the pad, the adhesion will be decreased, therefore, do not stick it to the pad for further use.



Installing Dust Bag

Install the dust bag on the tool so that it inclines upward. As shown in the figure.



1: Dust Bag

Sanding Operation

Hold the tool firmly. Turn the tool on and then slightly apply it to the workpiece, as shown in the figure. Generally, this tool only applies to micro grinding for the surface of workpieces. The grinding quality is more important than the grinding amount and grinding rate. Thus, do not apply strong pressure to grind. Keep the baseplate aligned over the workpieces. Good finish can be obtained on the furniture or fine surface if put a cloth under the

workpieces.

Cautions:

- Never plug up the air outlet with your fingers or hand.
- Never run the tool without the abrasive paper. You may seriously damage the pad.
- This tool is not waterproof, and do not use water on the workpiece.



Maintenance and Care

Caution: Always be sure that the tool is switched off and unplugged before attempting to perform inspection or maintenance.

- **Check the mounting screws**

Should always check whether mounting screw fastening safely. If found loose screws, shall be immediately to tighten, so as to avoid an accident.

- **Maintenance of the Motor**

The motor unit winding is the very “heart” of the power tool. Exercise due care to ensure the winding does not become damaged and /or wet with oil or water.

- **After Use**

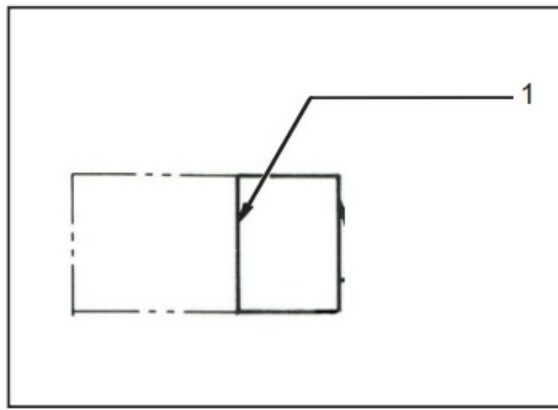
Do not put down the tool immediately after the tool is turned off. Wait until the tool completely stops before putting it down. This can not only avoid accidents, but also reduce a large amount of dust and fine debris being sucked into the tool.

- **Clean the air vents**

The air inlet and air outlet of the tool should be cleaned regularly or at any time when it is blocked.

- **Check the Carbon Brushes**

Remove and check the carbon brushes regularly. Replace when they wear down to the limit mark. Keep the carbon brushes clean and free to slip in the holders. Both carbon brushes should be replaced at the same time.



1.Limit Mark

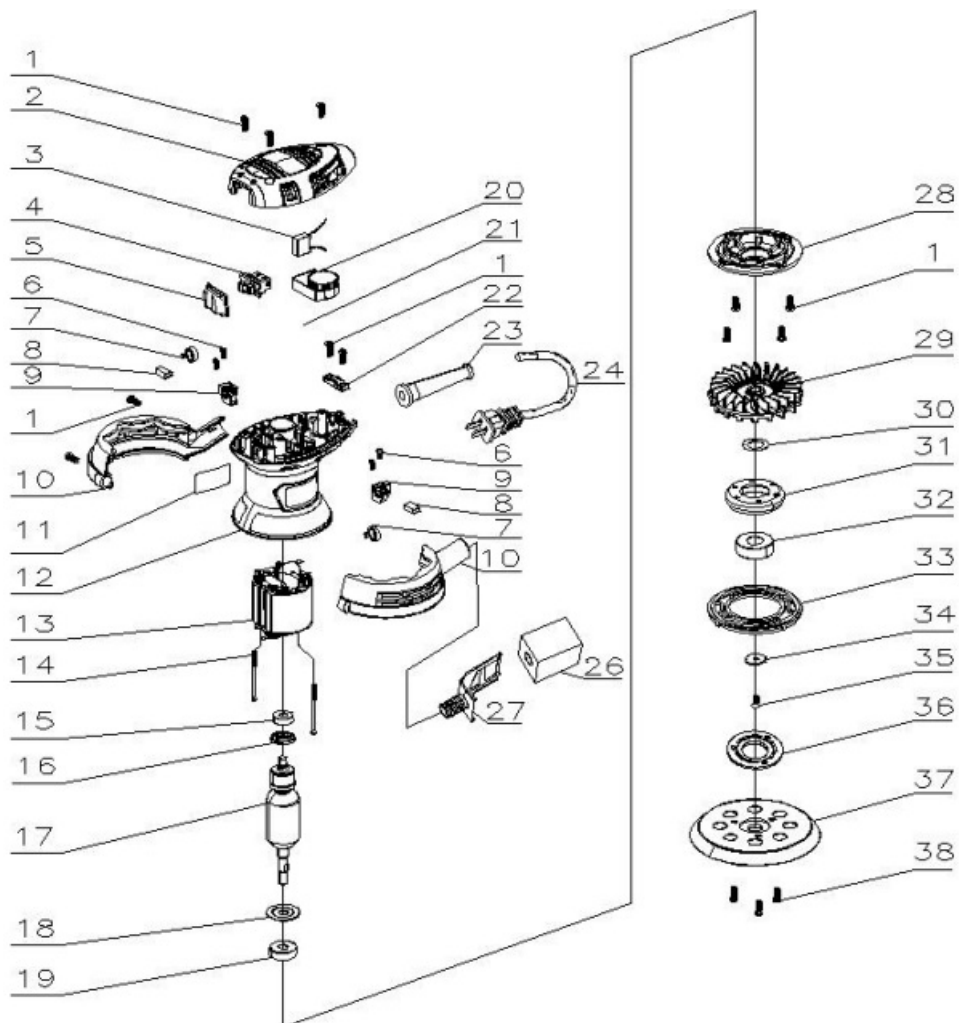
- **Replace the Carbon Brushes**

Use a screwdriver to remove the brush cover, take out the worn carbon bush and replace a new one, and then tighten the brush cover securely.

- **Replaceable Parts: Carbon Brush, Switch, and Cord**

If the replacement of the supply cord is necessary, this has to be done by the manufacturer or his agent in order to avoid a safety hazard.

EXPLODED VIEW



1. Cross Recessed Pan Head Tapping Screw ST4.2×17
2. Rear Cover
3. Capacitor 0.22μF


4. Switch
5. Switch Dirt-Proof Boot
6. Cross Recessed Pan Head Tapping Screw ST2.9×9
7. Plane Coiled Coil Spring
8. Carbon Brush
9. Brush Holder Assembly
10. Motor Housing
11. Stator(Disk Sander)
12. Cross Recessed Pan Head Tapping Screw ST4.2X55
13. Ball Bearing 607SS(NMB)
14. Insulation Washer
15. Armature (Disk Sander)
16. Bearing Retainer
17. Ball Bearing 629VV(NSK)
18. PCBA Assembly
19. Terminal Block(Single)
20. Strain Relief
21. Cord Guard
22. Cord
23. Dust Bag
24. Dust Collection Rack
25. Holder Plate
26. Eccentricity Fan
27. Washer
28. Bearing Retainer
29. Ball Bearing 6202T1XDDWC3E(NSK)
30. Dust Free Ring
31. Washer
32. Cross Recessed Countersunk Head Screw M4×10
33. Bearing Flange
34. Abrasive Disc
35. Cross Recessed Pan Head Screw With Spring And Flat Washer M4×16
36. **T1** Left And Right Base Plate

ABOUT COMPANY

- Made by Jiangsu Dongcheng M&E Tools Co.,Ltd.
- **Add:** Power Tools Industrial Park, Tianfen Town, Qidong City, Nantong, Jiangsu 226244
- **Tel** :+86-400-182-5988
- **Fax:**+86-513-83299608
- <http://www.chinadongcheng.com>

Documents / Resources

OPERATION INSTRUCTIONS



DSA125 ASA125 KSA125

SA	2
AS	10
KS	20

[DONGCHENG DSA125 Random Orbital Sander](#) [pdf] Instruction Manual
DSA125, ASA125, KSA125, DSA125 Random Orbital Sander, DSA125, Random Orbital Sander, Orbital Sander, Sander

References

- [P65Warnings.ca.gov](#)
- [User Manual](#)