



# Dong Guan Shi Zhi Dong Dian Zi Ke Ji You Xian Gong Si ZD-O23 Wired Gaming Controller User Guide

[Home](#) » [Dong Guan Shi Zhi Dong Dian Zi Ke Ji You Xian Gong Si](#) » Dong Guan Shi Zhi Dong Dian Zi Ke Ji You Xian Gong Si ZD-O23 Wired Gaming Controller User Guide 



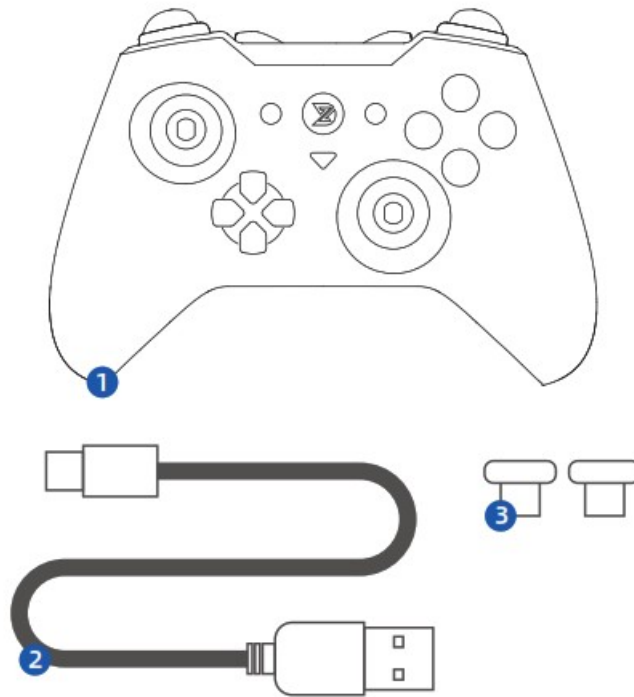
User Guide

## Contents

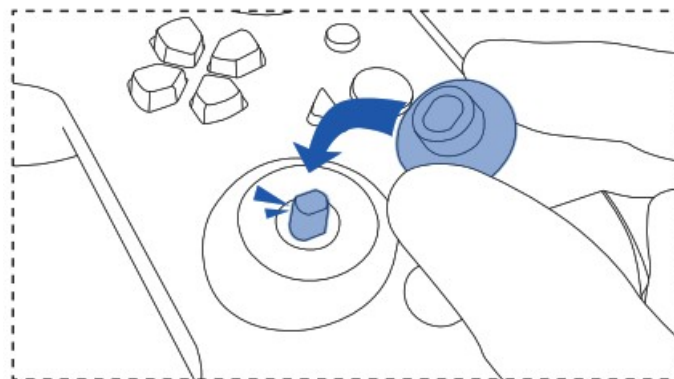
- [1 Package List](#)
- [2 Turn on](#)
- [3 Connect to computer](#)
- [4 Connect to phone/tablet](#)
- [5 Connect to Switch](#)
- [6 Turn off](#)
- [7 Reset function](#)
- [8 Low battery](#)
- [9 Charging](#)
- [10 Documents / Resources](#)
- [11 Related Posts](#)

## Package List

1.



- 1 Controller
- 2. 1 Data line
- 3. 2 Thumb sticks caps



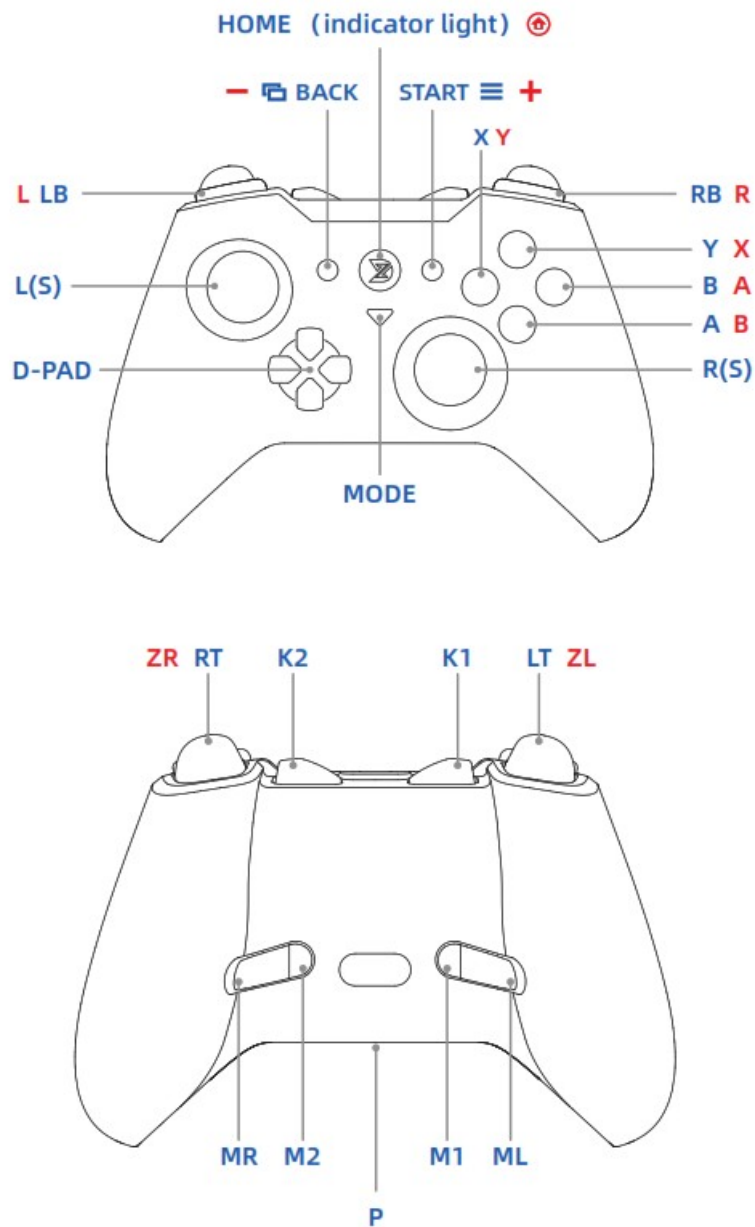
**Warning:** please insert the thumb sticks caps before turn on the controller!!!

This description is a simplified version. For more information, please scan the QR code.



<http://izdtech.com>

The blue keys are common keys and the red keys are Nintendo Switch keys.

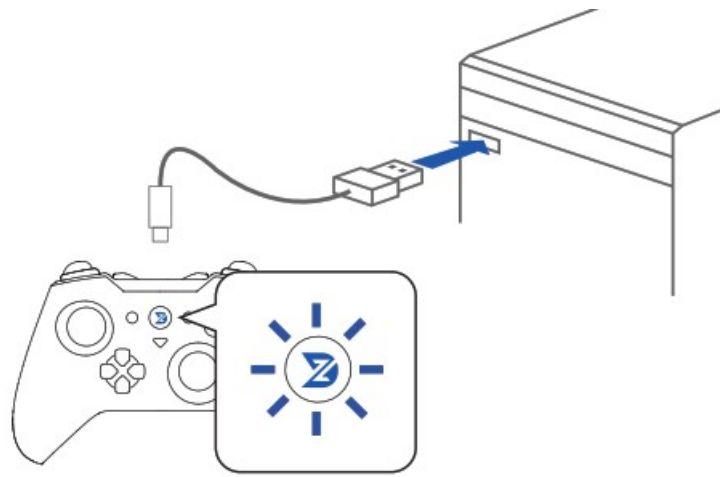


## Turn on

Press HOME button 1 second to turn on the controller.

## Connect to computer

1. Connect the controller to the computer with data cable
2. The controller indicator flashing blue.
3. The indicator shines blue when the battery is fully charged.



## Connect to phone/tablet

1. Turn on the Bluetooth of your phone/tablet
2. Press and hold the A/B button first, then press the HOME button to turn it on. The indicator flashes cyan
3. Press and hold the P button for 3 seconds, the indicator flashes cyan and yellow alternately.
4. Search Xbox wireless controller and click pair.
5. If connection succeeds, the indicator shines cyan.

After pairing, you can quickly connect by pressing the A/B button and HOME button directly to turn on the device, as long as you have not paired another device in the same mode.



## Connect to Switch

1. Turn on Switch and click “Controllers – Change Grip/Order ” in order.
2. Press and hold the X/Y button first, then press the HOME button to turn it on. The indicator flashes red.
3. Press and hold the P button for 3 seconds, the indicator flashes red and yellow alternately.
4. If connection succeeds, the indicator shines red.

After pairing, you can quickly connect by pressing the A/B button and HOME button directly to turn on the device, as long as you have not paired another device in the same mode.



Double-click the MODE button to take pictures. Double-click and then hold the MODE button to record the first 30 seconds of game screen.

## **Turn off**

Press HOME button 4 seconds to turn off the controller.

## **Reset function**

Press and hold the BACK button and MODE button simultaneously for 2 seconds to reset all functions of the controller.

## **Low battery**

Joystick light ring flashes red when the battery is below 20%.

## **Charging**

5V 1A chargers are applicable. The indicator flashes during charging and turns off or stays on when fully charged. If there is no 5V 1A charger, plug it into the USB port of your computer for charging.

FCC Warning Statement Changes or modifications not expressly approved by the party responsible for compliance could void the user's authority to operate the equipment. This equipment has been tested and found to comply with the limits for a Class B digital device, pursuant to Part 15 of the FCC Rules. These limits are designed to provide reasonable protection against harmful interference in a residential installation. This equipment generates uses and can radiate radio frequency energy and, if not installed and used in accordance with the instructions, may cause harmful interference to radio communications. However, there is no guarantee that interference will not occur in a particular installation. If this equipment does cause harmful interference to radio or television reception, which can be determined by turning the equipment off and on, the user is encouraged to try to correct the interference by one or more of the following measures:

- Reorient or relocate the receiving antenna.
- Increase the separation between the equipment and receiver.
- Connect the equipment into an outlet on a circuit different from that to which the receiver is connected.
- Consult the dealer or an experienced radio/TV technician for help.

This device complies with part 15 of the FCC Rules. Operation is subject to the following two conditions: (1) This device may not cause harmful interference, and (2) this device must accept any interference received, including interference that may cause undesired operation. The device has been evaluated to meet general RF exposure requirement.

Product name: ZD-O RGB

Model: ZD-O23

Battery capacity: 800 mAh

Operating current: 150 mA

Compatibility protocols: Bluetooth 3.0/4.0/5.0 USB 2.0/3.0

Operating temperature: -10 ~ 60

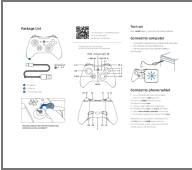
Weight: 206 g

Frequency range: 2402 MHz ~ 2480 MHz

Transmitting power: 1 dBm

Specifications are subject to change without notice.

Documents / Resources

	<p><a href="#">Dong Guan Shi Zhi Dong Dian Zi Ke Ji You Xian Gong Si ZD-O23 Wired Gaming Controller [pdf] User Guide</a></p> <p>ZD-O23, ZDO23, 2A7SN-ZD-O23, 2A7SNZDO23, ZD-O23 Wired Gaming Controller, ZD-O23, Wired Gaming Controller</p>
---	--

[Manuals+](#)