



Dong Cheng DCJF22 Cordless Reciprocating Saw Instruction Manual

[Home](#) » [Dong Cheng](#) » Dong Cheng DCJF22 Cordless Reciprocating Saw Instruction Manual 

Dong Cheng

DCJF22

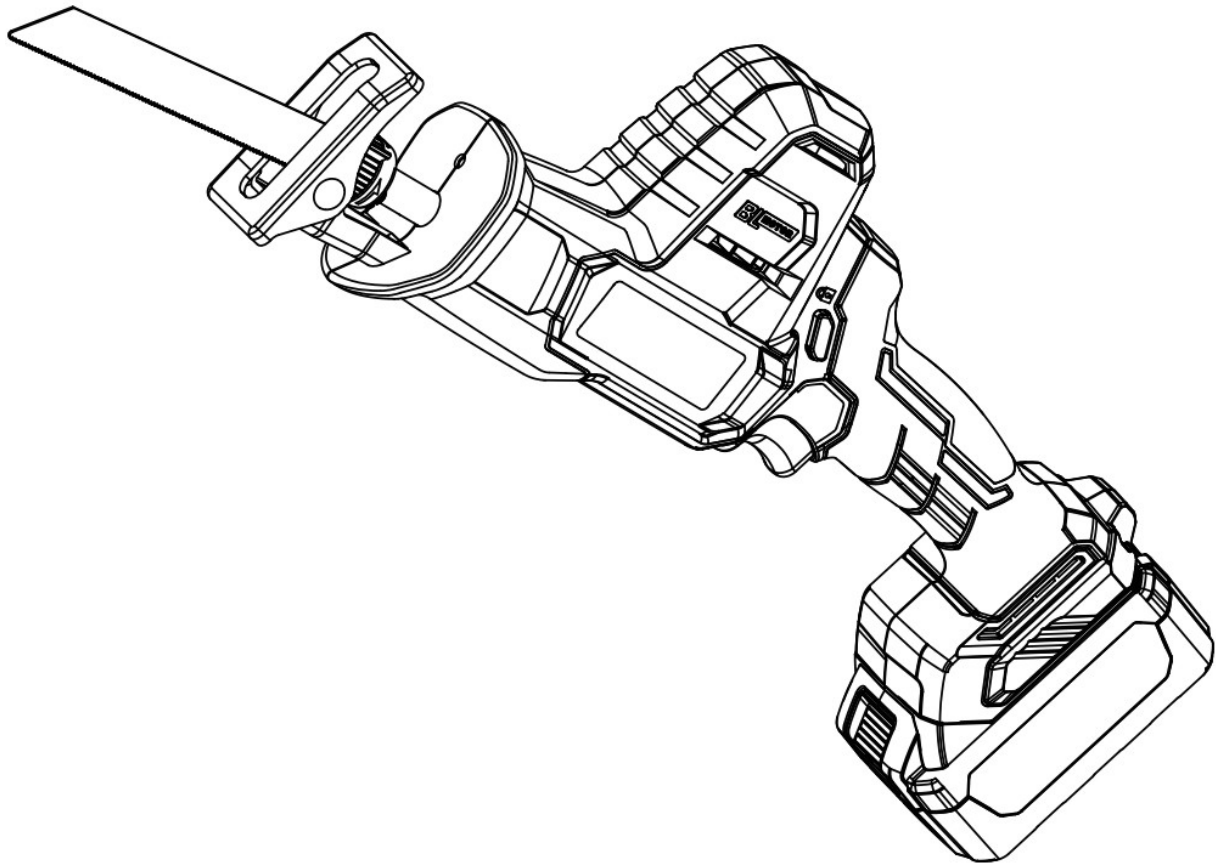
ADJF22

KDJF22

Contents

- [1 OPERATION INSTRUCTIONS](#)
- [2 TECHNICAL DATA](#)
- [3 FUNCTION SPECIFICATION](#)
- [4 INSTRUCTIONS FOR OPERATION](#)
- [5 CARE AND MAINTENANCE](#)
- [6 SAW BLADE SELECTION](#)
- [INSTRUCTIONS](#)
- [7 Documents / Resources](#)
 - [7.1 References](#)
- [8 Related Posts](#)

OPERATION INSTRUCTIONS



Some dust created by power sanding, sawing, grinding, drilling, and other construction activities contains chemicals known to cause cancer, birth defects or other reproductive harm. Some examples of these chemicals are:

- Lead from lead-based paints,
- Crystalline silica from bricks and cement and other masonry products, and
- Arsenic and chromium from chemically treated lumber. Your risk from these exposures varies, depending on how often you do this type of work. To reduce your exposure to these chemicals: work in a well ventilated area, and work with approved safety equipment, such as those dust masks that are specially designed to filter out microscopic particles.

For more information go to www.P65Warnings.ca.gov.

General power tool safety warnings



WARNING Read all safety warnings, instructions, illustrations and specifications provided with this power tool.

Failure to follow all instructions listed below may result in electric shock, fire and/or serious personal injury. Save all warnings and instructions for future reference.

The term “power tool” in the warnings refers to your mainsoperated (corded) power tool or battery-operated (cordless) power tool.

1. Work area safety

- a) Keep work area clean and well lit. Cluttered or dark areas invite accidents.
- b) Do not operate power tools in explosive atmospheres, such as in the presence of flammable liquids, gases or dust. Power tools create sparks which may ignite the dust or fumes.
- c) Keep children and bystanders away while operating a power tool.

Distractions can cause you to lose control.

2. Electrical safety

- a) Power tool plugs must match the outlet. Never modify the plug in any way. Do not use any adapter plugs with earthed (grounded) power tools. Unmodified plugs and matching outlets will reduce risk of electric shock.
- b) Avoid body contact with earthed or grounded surfaces, such as pipes, radiators, ranges and refrigerators. There is an increased risk of electric shock if your body is earthed or grounded.
- c) Do not expose power tools to rain or wet conditions.
Water entering a power tool will increase the risk of electric shock.
- d) Do not abuse the cord. Never use the cord for carrying, pulling or unplugging the power tool. Keep cord away from heat, oil, sharp edges or moving parts. Damaged or entangled cords increase the risk of electric shock.
- e) When operating a power tool outdoors, use an extension cord suitable for outdoor use. Use of a cord suitable for outdoor use reduces the risk of electric shock.
- f) If operating a power tool in a damp location is unavoidable, use a residual current device (RCD) protected supply. Use of an RCD reduces the risk of electric shock.

3. Personal safety

- a) Stay alert, watch what you are doing and use common sense when operating a power tool. Do not use a power tool while you are tired or under the influence of drugs, alcohol or medication.
A moment of inattention while operating power tools may result in serious personal injury.
- b) Use personal protective equipment. Always wear eye protection. Protective equipment such as a dust mask, non-skid safety shoes, hard hat or hearing protection used for appropriate conditions will reduce personal injuries.
- c) Prevent unintentional starting. Ensure the switch is in the off-position before connecting to power source and/or battery pack, picking up or carrying the tool.
Carrying power tools with your finger on the switch or energising power tools that have the switch on invites accidents.
- d) Remove any adjusting key or wrench before turning the power tool on. A wrench or a key left attached to a rotating part of the power tool may result in personal injury.
- e) Do not overreach. Keep proper footing and balance at all times. This enables better control of the power tool in unexpected situations.
- f) Dress properly. Do not wear loose clothing or jewellery.
Keep your hair and clothing away from moving parts.
Loose clothes, jewellery or long hair can be caught in moving parts.
- g) If devices are provided for the connection of dust extraction and collection facilities, ensure these are connected and properly used.
Use of dust collection can reduce dust-related hazards.
- h) Do not let familiarity gained from frequent use of tools allow you to become complacent and ignore tool safety principles. A careless action can cause severe injury within a fraction of a second.

4. Power Tool Use and Care

- a) Do not force the power tool. Use the correct power tool for your application. The correct power tool will do the job better and safer at the rate for which it was designed.
- b) Do not use the power tool if switch does not turn it on or off. Any power tool that cannot be controlled with the switch is dangerous and must be repaired.
- c) Disconnect the plug from the power source and/or the battery pack from the power tool before making any

adjustments, changing accessories, or storing power tools. Such preventive safety measures reduce the risk of starting the power tool accidentally.

d) Store idle power tools out of the reach of children and do not allow persons unfamiliar with the power tool or these instructions to operate the power tool. Power tools are dangerous in the hands of untrained users.

e) Maintain power tools. Check for misalignment or binding of moving parts, breakage of parts and any other condition that may affect the power tool's operation. If damaged, have the power tool repaired before use. Many accidents are caused by poorly maintained power tools.

f) Keep cutting tools sharp and clean. Properly maintained cutting tools with sharp cutting edges are less likely to bind and are easier to control.

g) Use the power tool, accessories and tool bits etc. in accordance with these instructions, taking into account the working conditions and the work to be performed. Use of the power tool for operations different from those intended could result in a hazardous situation.

h) Keep handles and grasping surfaces dry, clean and free from oil and grease. Slippery handles and grasping surfaces do not allow for safe handling and control of the tool in unexpected situations.

5. Battery tool use and care

a) Recharge only with the charger specified by the manufacturer. A charger that is suitable for one type of battery pack may create a risk of fire when used with another battery pack.

b) Use power tools only with specifically designated battery packs. Use of any other battery packs may create a risk of injury and fire.

c) When battery pack is not in use, keep it away from other metal objects, like paper clips, coins, keys, nails, screws or other small metal objects, that can make a connection from one terminal to another. Shorting the battery terminals together may cause burns or a fire.

d) Under abusive conditions, liquid may be ejected from the battery; avoid contact. If contact accidentally occurs, flush with water. If liquid contacts eyes, additionally seek medical help. Liquid ejected from the battery may cause irritation or burns.

e) Do not use a battery pack or tool that is damaged or modified. Damaged or modified batteries may exhibit unpredictable behaviour resulting in fire, explosion or risk of injury.

f) Do not expose a battery pack or tool to fire or excessive temperature. Exposure to fire or temperature above 130 °C may cause explosion.

NOTE The temperature „130 °C“ can be replaced by the temperature „265 °F“.

g) Follow all charging instructions and do not charge the battery pack or tool outside the temperature range specified in the instructions. Charging improperly or at temperatures outside the specified range may damage the battery and increase the risk of fire.

6. Service

a) Have your power tool serviced by a qualified repair person using only identical replacement parts. This will ensure that the safety of the power tool is maintained.

b) Never service damaged battery packs. Service of battery packs should only be performed by the manufacturer or authorized service providers.

Safety instructions for reciprocating saws

a) Hold the power tool by insulated gripping surfaces, when performing an operation where the cutting accessory may contact hidden wiring.

Cutting accessory contacting a “live” wire may make exposed metal parts of the power tool “live” and could give the operator an electric shock.








b) Use clamps or another practical way to secure and support the workpiece to a stable platform. Holding the

workpiece by hand or against your body leaves it unstable and may lead to loss of control.


Battery safety warning

- a) Do not dismantle, open or shred secondary cells or batteries.
- b) Keep batteries out of the reach of children Battery usage by children should be supervised. Especially keep small batteries out of reach of small children.
- c) Do not expose cells or batteries to heat or fire. Avoid storage in direct sunlight.
- d) Do not short-circuit a cell or a battery. Do not store cells or batteries haphazardly in a box or drawer where they may short-circuit each other or be short-circuited by other metal objects.
- e) Do not subject cells or batteries to mechanical shock.
- f) In the event of a cell leaking, do not allow the liquid to come in contact with the skin or eyes. If contact has been made, wash the affected area with copious amounts of water and seek medical advice.
- g) Do not use any charger other than that specifically provided for use with the equipment.
- h) Do not use any cell or battery which is not designed for use with the equipment.
- i) Do not mix cells of different manufacture, capacity, size or type within a device.
- j) Always purchase the battery recommended by the device manufacturer for the equipment.
- k) Keep cells and batteries clean and dry.
- l) Wipe the cell or battery terminals with a clean dry cloth if they become dirty.
- m) Secondary cells and batteries need to be charged before use. Always use the correct charger and refer to the manufacturer's instructions or equipment manual for proper charging instructions.
- n) Do not leave a battery on prolonged charge when not in use.
- o) After extended periods of storage, it may be necessary to charge and discharge the cells or batteries several times to obtain maximum performance.
- p) Retain the original product literature for future reference.
- q) Use the cell or battery only in the application for which it was intended.
- r) When possible, remove the battery from the equipment when not in use.
- s) Keep the cell or battery away from microwaves and high pressure.
- t) Dispose of properly.

Symbol

	WARNING
	To reduce the risk of injury, user must read instruction manual
	Do not burn
	Do not charge a damaged battery pack
 Li-Ion 	Do not dispose of batteries. Return exhausted batteries to your local collection or recycling point.
	Conformity of US and CANADA

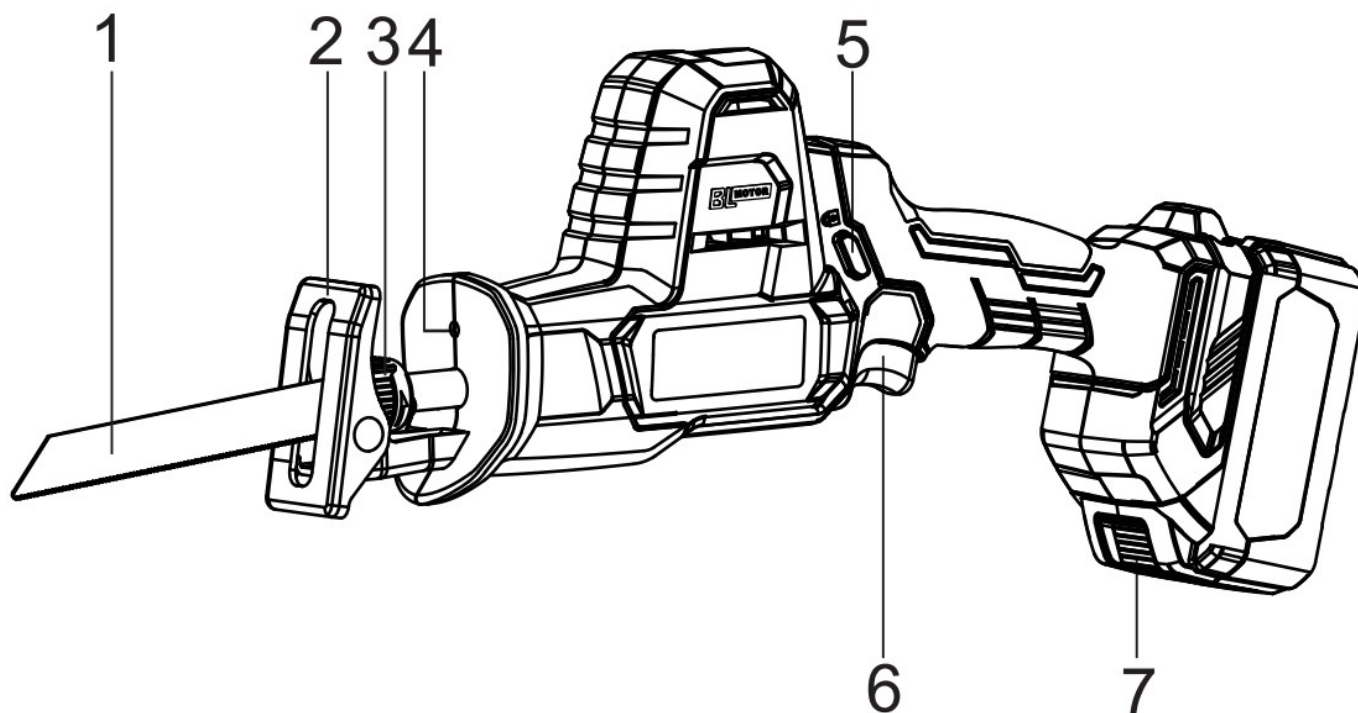
TECHNICAL DATA

Model		DCJF22/ADJF22/KDJF22 (The letter “JF” means Reciprocating Saw)
Rated voltage		20 
Battery	Type	Li-Ion
Tool chuck		Quick clamping(SDS)
Length of Strokes		Ø7/8"(22mm)
No-load strokes		0-3000/min
Max. Cutting Depth	Metal	3/5"(15mm)
	Wood	7"(180mm)
	Diameter of Pipe	Ø4"(Ø100mm)
Net Weight Of The Machine (without battery		4.0 lb(1.8kg)

Intended use

This product can saw wood, plastic, metal and general building materials.This product can be used for straight sawing or curve sawing.

FUNCTION SPECIFICATION



1. Saw Blade
2. Base Plate
3. Locking Sleeve for Saw Blade
4. LED Light
5. Safety Switch
6. Speed Controller
7. Battery Pack Button

INSTRUCTIONS FOR OPERATION

- Battery Charging

Check the user manual of battery charger for detailed information.

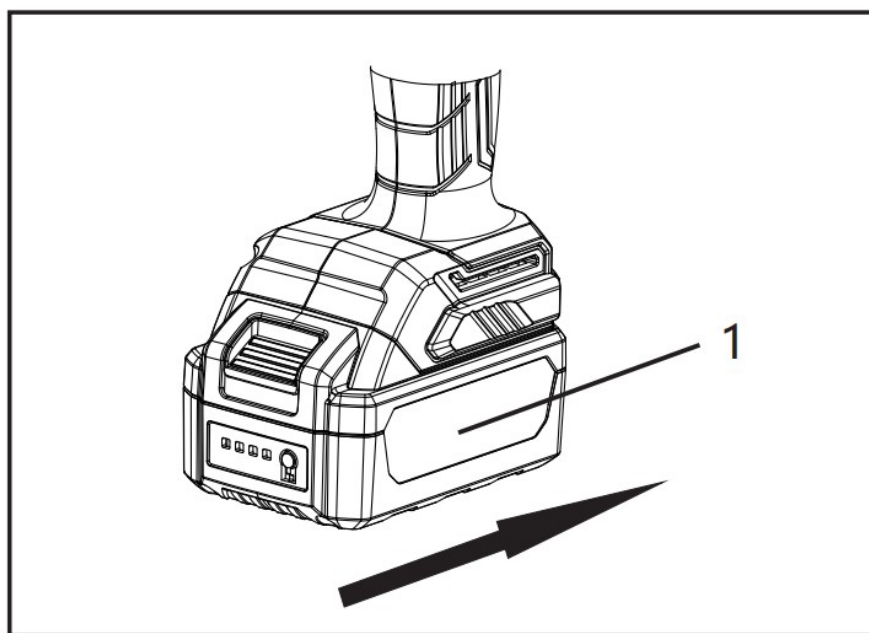
- Installing the Battery Pack

To install the battery firmly, insert it properly all the way until it locks in place with a little click. If not, it may accidentally fall out of the tool, causing injury to you or someone around you. Avoid overexerting or hammering the battery into the motor housing with the help of other objects.

CAUTION: Only use the specified battery pack.

Using other brands of battery packs may result in the risk of injury and personal injury and property damage caused by the explosion of the battery pack.

1. Battery Pack



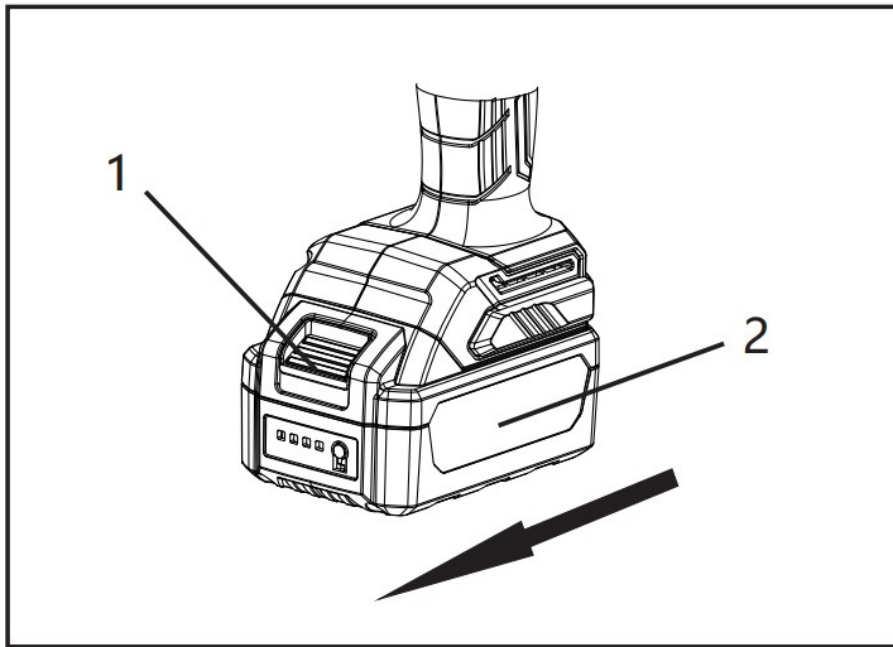
- Removing the Battery Pack

The battery pack is under the handle of the machine, press the battery pack button, and then pull out the battery pack.

CAUTION: Do not forcefully pull out the battery pack.

1. Battery Pack Button

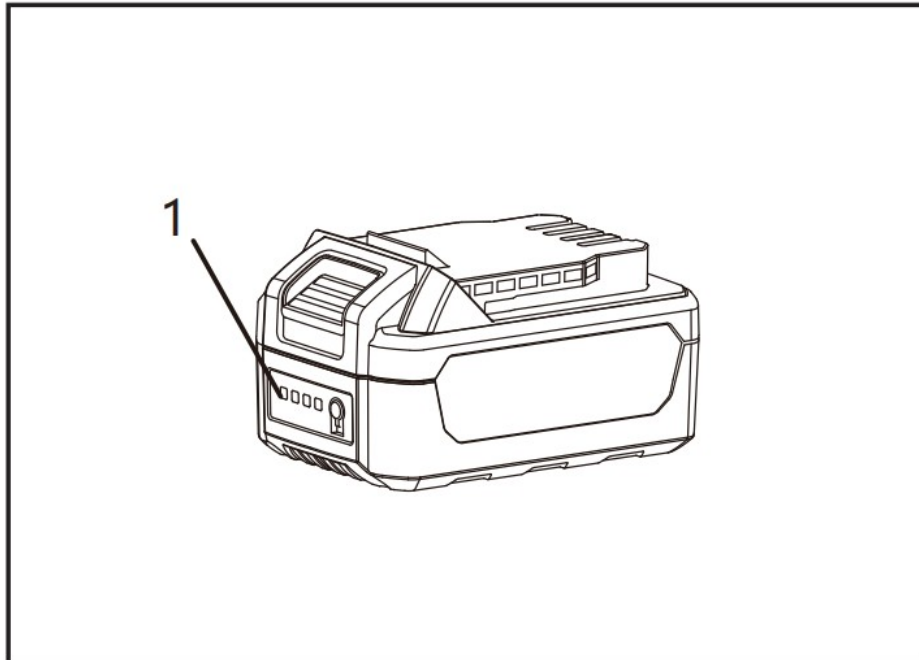
2. Battery Pack



- Electric Quantity Indicator Light

When the power button is pressed or the tool is started, the electric quantity indicator light will display the electric quantity of the battery pack. The electric quantity level can be displayed by the state of 4 LED lights (hereinafter referred to as the red light).

1. Electric Quantity Indicator Light



The battery status is shown in the table below

Status of Red LED Lights	Approx. Battery Power Left
4 lights lit	75%~100%
3 lights lit	50%~75%
2 lights lit	25%~50%
1 light lit	10%~25%

- **Continuous Use**

When you continue to use the machine until the battery is exhausted, let the machine cool for 15 minutes before replacing it with a new battery pack.

- **Over-discharge Protection**

The machine is equipped with an over-discharge protection circuit. When the battery power is insufficient, the protection circuit is opened and the machine stops rotating.

- **Disposal of used battery packs**

To protect natural resources, please recycle or dispose of battery packs properly. The battery contains a lithium battery. Please consult the relevant local authorities for information on recycling and/or disposal. After the battery pack is exhausted, remove the battery pack and wrap the terminals with strong tape to avoid short circuit and leakage. It is absolutely forbidden to try to open or disassemble any parts or components.

- **Inserting/Replacing Saw Blade**

1. **Selecting Saw Blade**

Use only saw blades suitable for the material being worked. Select a suitable saw blade according to the workpiece in reference to the table as mentioned in intended use. The saw blade should not be longer than required for the intended cut. Use a thin saw blade for narrow curve cuts.

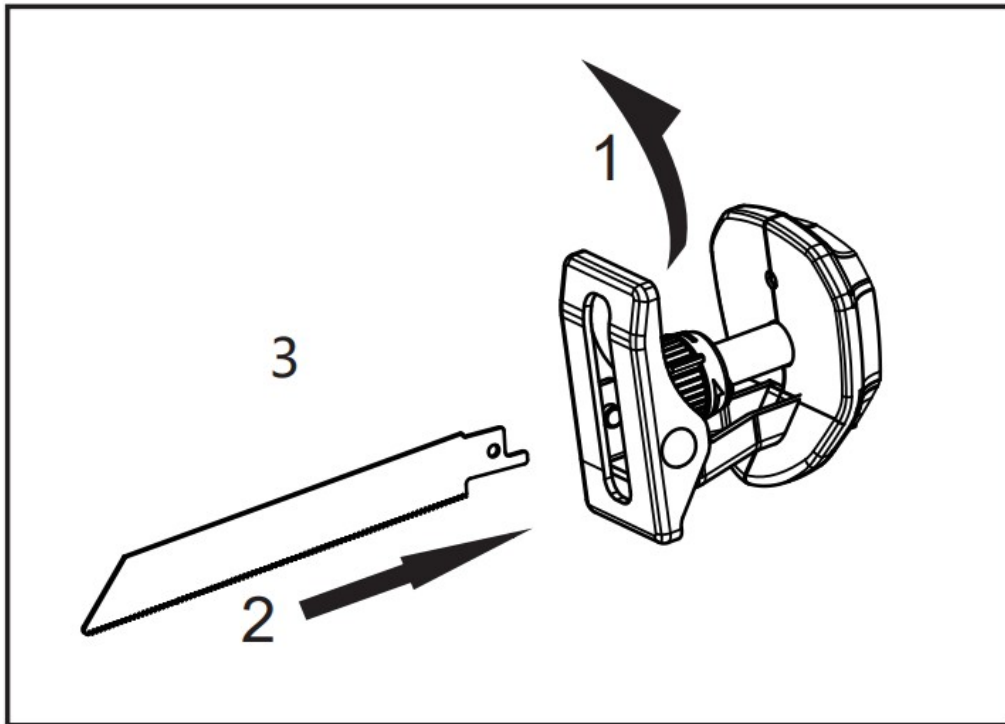
2. **Inserting Saw Blade**

Turn the locking sleeve approx. 90° in the direction of the arrow and hold it. Insert the saw blade into the saw blade holder.

CAUTION Check the tight seating of the saw blade. A loose saw blade can fall out and lead to injuries.

For some special work, the saw blade can also be turned through 180° (with the teeth pointed upwards) and re-inserted again.

Inserting Saw Blade



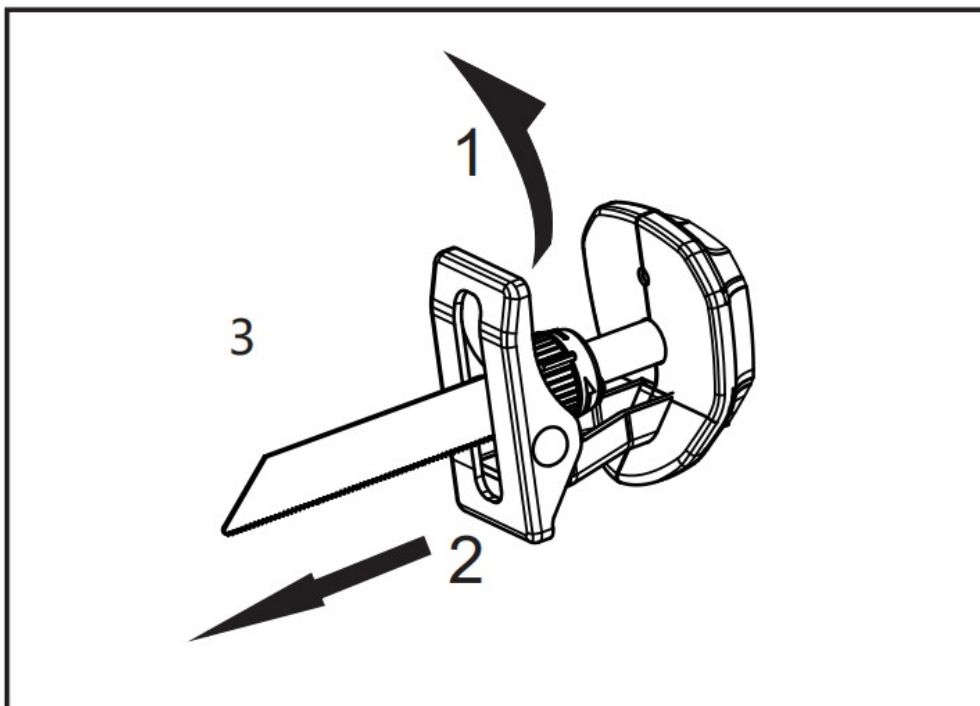
3. Removing Saw Blade

Turn the locking sleeve for saw blade approx. 90° in the direction of the arrow and hold it. Remove the saw blade.

Cautions:

1. Before installing or removing saw blades or any maintenance work for power tools, be sure to take out the battery pack.
2. Wear work gloves when installing the saw blade.
If your hands touch the saw blade, you may get cuts.
3. When replacing the saw blade, please note that there can be no debris on the saw blade joint, such as wood chips or metal chips.

Removing Saw Blade



- **Start the machine**

First, turn the safety switch to the unlocked position; then press the speed switch to start the machine;

The speed control switch can steplessly adjust the number of impacts. The correct number of impacts must depend on the workpiece material and working conditions. Only actual operation can find the right number of impacts.

It is best to reduce the number of impacts when starting sawing, or when sawing plastic and aluminum sheets.

- **Shut down the machine**

Loosen the speed control switch and the machine will stop.

CAUTION: If the machine is temporarily not used, the safety switch needs to be pushed to the locked position.

- **Saw Dust**

Pigment with lead or dust generated from some wood, mineral or metal can damage health. The operator or people near the working area may suffer from allergies or respiratory tract infection if they breathe in those dusts. Such dust generated from oak may be carcinogenic, especially when mixed with additive. Only people with special training can process materials with asbestos.

——Keep working area well ventilated.

——Wear respirator of grade P2 when operating.

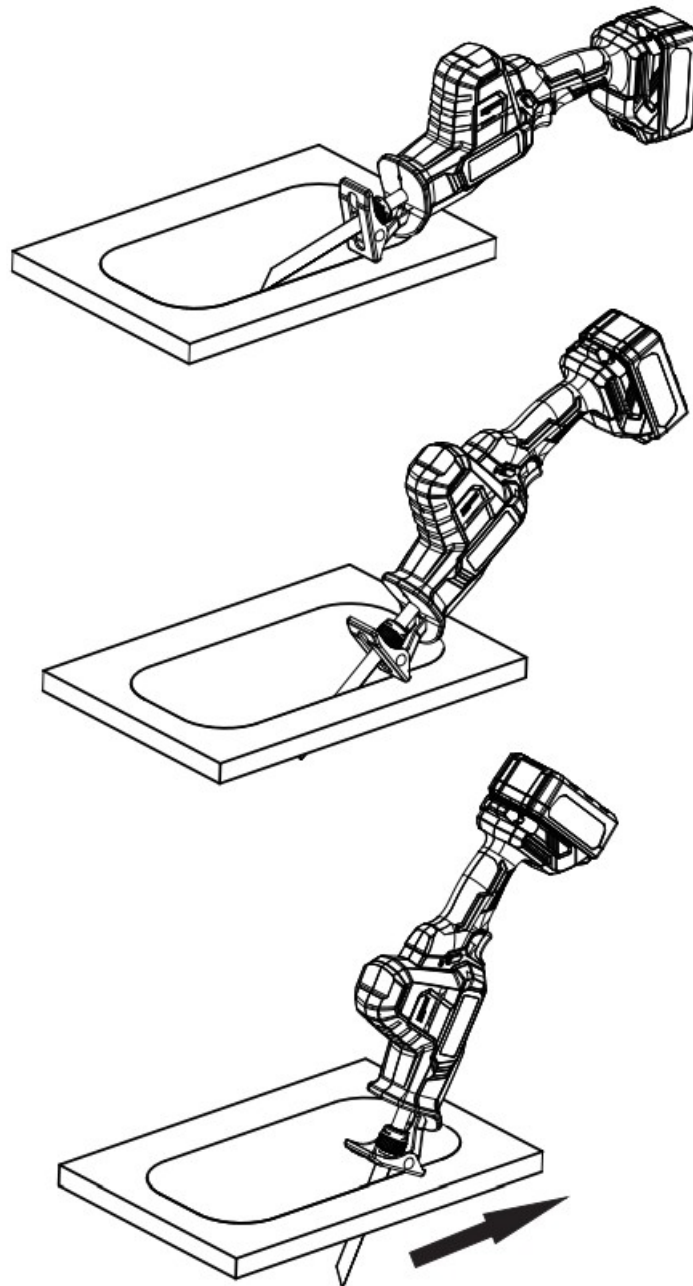
CAUTION: Avoid working area from accumulating too much dust, or there may be a danger of fire.

- **LED Light**

1. When working normally, press the speed control switch and the LED light will be on.
2. This provides extra light for work and can be operated in low-light areas.
3. Release switch, LED lights off.

- **Tips for Operation**

1. When saw light building materials, observe the statutory provisions and the recommendations of the material suppliers. Check wood, press boards, building materials, etc. for foreign objects such as nails, screws or similar, and remove them, if required.
2. Switch the machine on and guide it toward the workpiece. Position the base plate onto the surface of the work and saw through the material applying uniform contact pressure and feed. After completing



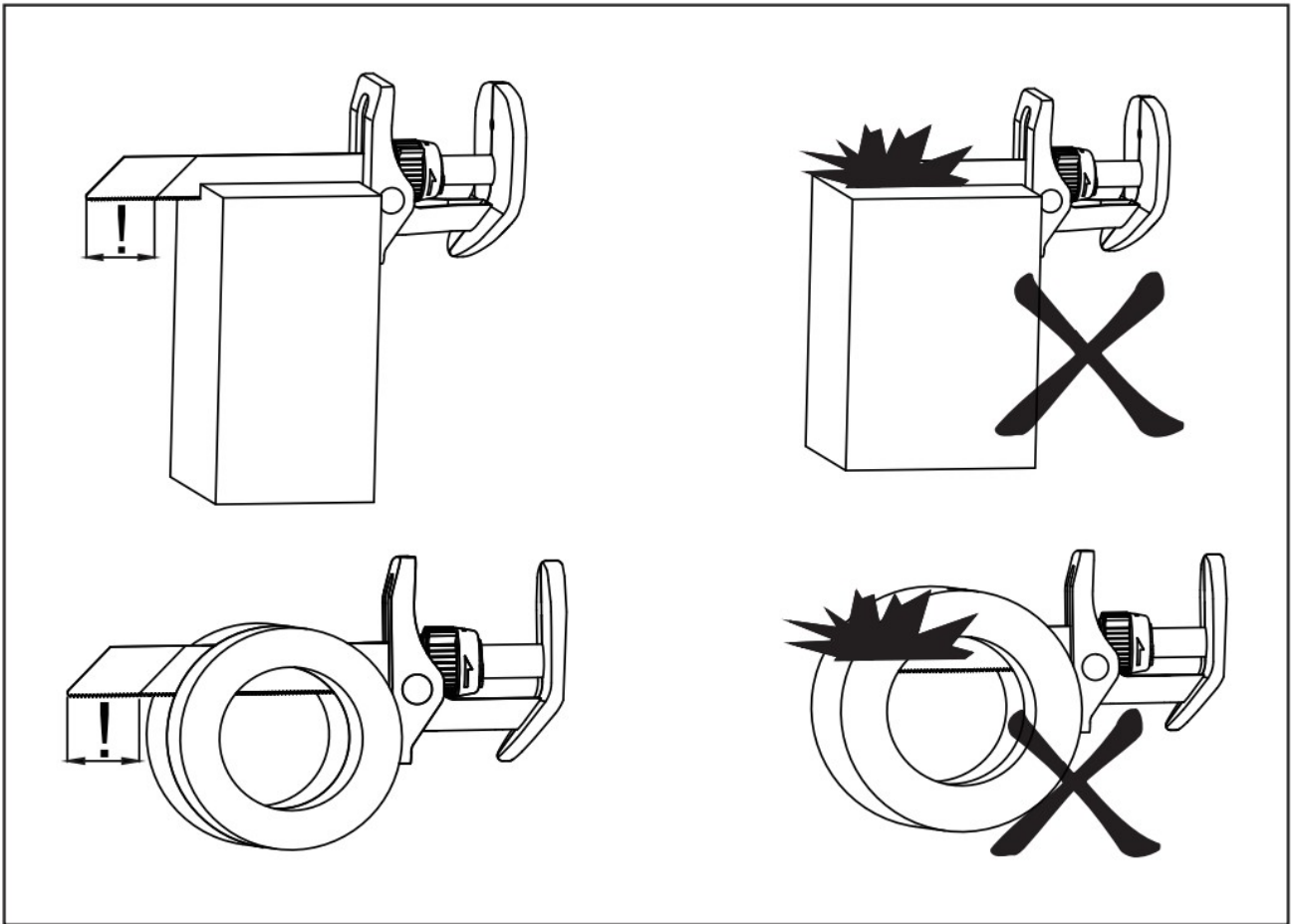
Schematic diagram of plunge cutting on wood, plaster splint and other materials.

Sct

- Flat Cutting

Use flexible bimetallic blade to saw the bulge on the wall (such as water pipe and so on).

CAUTION: The length of saw blade must be longer than the diameter of the pipe, otherwise there is a danger of kickback.



MAINTENANCE AND INSPECTION

- **Inspection:**

When the machine is issued or retracted, the custodian must conduct a daily inspection; before use, the user must conduct a daily inspection; the unit using the machine must have a full-time staff to conduct regular inspections; inspect at least once a year; In areas with damp heat and frequent temperature changes or places with harsh operating conditions, the inspection period should be shortened accordingly; inspections should be carried out in time before the rainy season.

For machines that have passed regular inspections, the inspection “qualified” mark should be pasted on the appropriate parts of the machine. The “qualified” mark should be clear, clear and correct and include at least: machine number, inspection unit name or mark, inspector name or mark, and effective date.

- **Maintenance:**

The maintenance of the machine must be carried out by a maintenance organization approved by the original manufacturer. The user and maintenance department shall not arbitrarily modify the original design parameters of the machine, and shall not use substitute materials that are lower than the performance of the raw materials and parts and components that do not conform to the original specifications.

CARE AND MAINTENANCE

CAUTION: Always be sure that the tool is switched off and the battery is removed before attempting to perform inspection or maintenance.

- **Storage**

When you do not need to use the machine for a long time, please pull out the battery pack. Keep the battery pack away from metal objects, such as paper clips, coins, keys, nails, screws or other small metal objects. These objects may connect the two terminals of the battery together. Shorting the battery terminals may cause an explosion or fire.

• **Clean the Vents**

Machine vents must be kept clean. It should be cleaned regularly or whenever there is a blockage.

• **Inspecting the Mounting Screws**


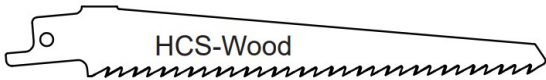
Regularly inspect all mounting screws and ensure that they are properly tightened. Should any of the screws be loose, retighten them immediately.

Failure to do so could result in serious hazard.

• **Cleaning**

It is forbidden to use liquids such as water or chemical cleaning agents to clean the machine, just wipe it with a dry cloth. Keep the handle dry and clean to avoid oil and grease pollution.

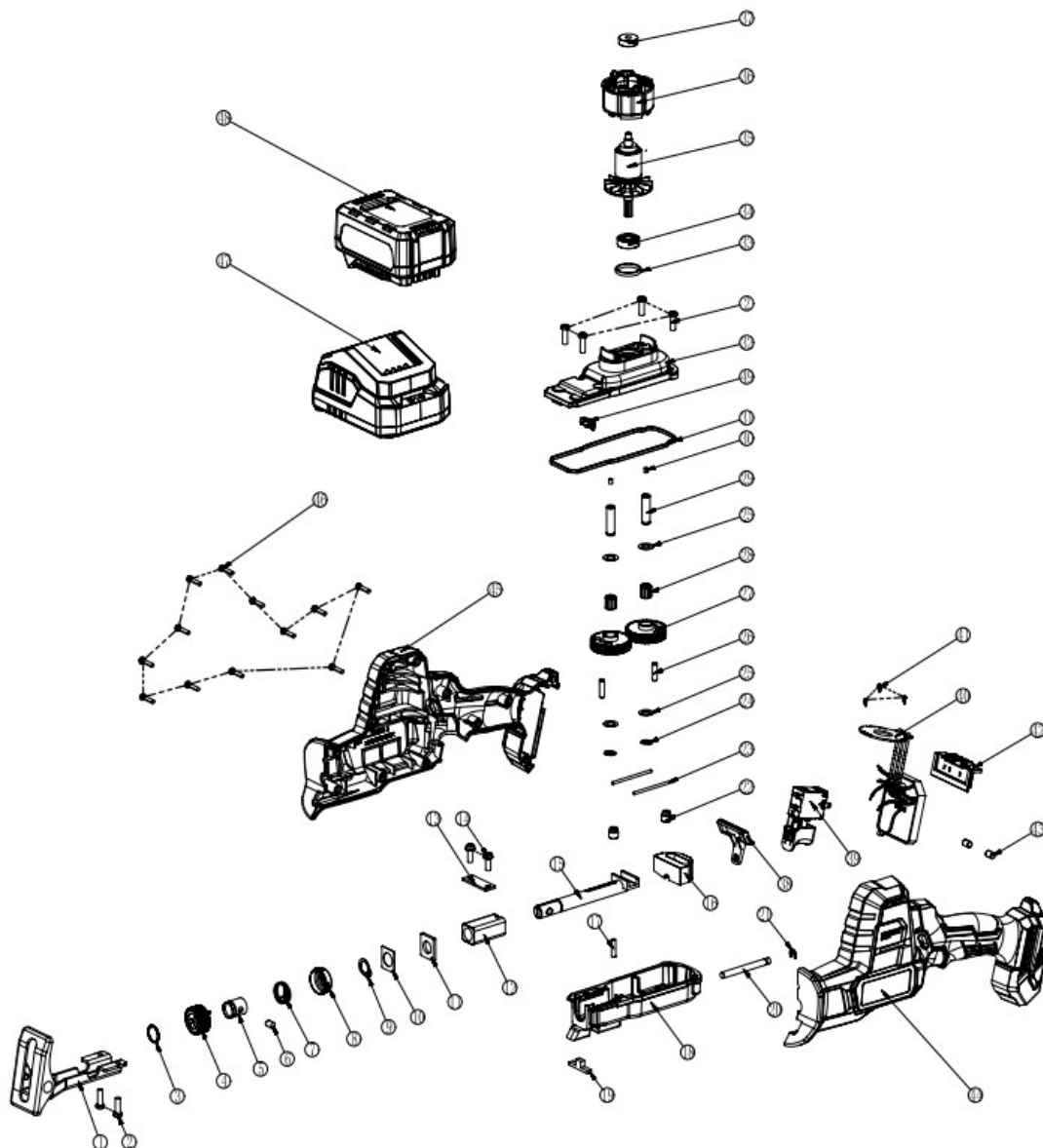
SAW BLADE SELECTION INSTRUCTIONS

Material	Picture	Usage
BIM		Sheet Metal 20mm Pipe Profile 90mm (Straight Saw)
High Carbon Steel		Wood Board 90mm Pipe Profile 90mm (Straight Saw)

For battery tools:
 Ambient temperature range during operation and storage: 0 °C – 45°C (32 °F -113 °F)
 Recommended ambient temperature range during charging: 5 °C – 40 °C (41 °F -104 °F)

	Charger	Battery pack
Model	FFCL20-02	FFBL2020 FFBL2040

1	Shoe	27	Big Gear
2	Cross Recessed Small Pan Head Screw M5x15	28	Needle Bearing K8X11x13TN1(SBF)
3	Spiral Snap Ring	29	Gear Spindle-New
4	Locking Cam For Saw Blade	30	Pin3.6×4.9
5	Locking Sleeve For Saw Blade	31	Sealing Ring
6	Pin	32	Gearbox
7	Torsion Spring	33	Bearing Seal
8	Blade Chuck Cover	34	Rolling Bearing 608
9	Circlip For Shaft 12	35	DC Armature
10	Washer 0.5	36	DC Stator
11	Oil Seal Gasket	37	Deep Groove Ball Bearing 626-2RS
12	Square Shaft Sleeve	38	Safety Switch
13	Square Bearing Flange	39	Switch Assembly
14	Cross Recessed Small Pan Head Screw M5x14 (With Spring Washer)	40	Controller Assembly
15	Reciprocating Shaft	41	Cross Recessed Pan Head Tapping Screw ST 2.2×6
16	Balance Block	42	Pins for Battery
17	Safety Pin	43	Rubber Column
18	Gearbox Cover	44	Left Motor Housing
19	Filter Sponge	45	Right Motor Housing
20	Guide Pin	46	Cross Recessed Pan Head Tapping Screw ST 3.5 x 16
21	Split Washer 5	47	20V Charger Assembly
22	Shaft Sleeve	48	20V Battery Pack
23	Anchor Pin	T1	Armature Ass'y (34,35,37)
24	Circlip For Shaft 8	T2	Gearbox Cover Ass'// (17,18,20,21)
25	Washer A8.2×13.7×0.5	T3	Gearbox Ass'y (29,30,32)
26	Gear Pin	T4	Big Gear Ass'y (26,27)



Dong Cheng

Made by Jiangsu Dongcheng M&E Tools Co.,Ltd.

Add:Power Tools Industrial Park of Tianfen, Qidong City, Jiangsu
Province, P.R. China

Tel :+86-400-182-5988







Fax:+86-513-83299608

<https://www.dongchengtool.com/>

90040600433/2022.04/NO.1

<div data-bbox="124 96 292 132" data-label="Section-Header"> <p>OPERATION INSTRUCTIONS</p> </div> <div data-bbox="140 159 264 250" data-label="Image"> </div> <div data-bbox="124 264 292 318" data-label="Table"> <table> <tr> <th colspan="2">DCJF22 ADAPTER ADJUF22</th></tr> <tr> <td>14</td><td>1</td></tr> <tr> <td>16</td><td>12</td></tr> <tr> <td>18</td><td>20</td></tr> </table> </div>	DCJF22 ADAPTER ADJUF22		14	1	16	12	18	20	<div data-bbox="311 150 1465 255" data-label="Text"> <p>Dong Cheng DCJF22 Cordless Reciprocating Saw [pdf] Instruction Manual DCJF22 Cordless Reciprocating Saw, DCJF22, Cordless Reciprocating Saw, Reciprocating Saw, Saw</p> </div>
DCJF22 ADAPTER ADJUF22									
14	1								
16	12								
18	20								

References

-  [Alt innen reklame i over 25 år](#)
-  [The domain name general.la is for sale](#)
-  [P65Warnings.ca.gov](#)
-  [SIERRA d.o.o. - Sistemske finančne storitve | Naše poslanstvo je na kvaliteten, kompetenten in zaupanja vreden način svetovati klientom na finančnem področju. Rezultat našega dela je prihranek pri stroških in zagotovitev socialne varnosti.](#)
-  [The domain name trabajo.la is for sale](#)
-  [P65Warnings.ca.gov](#)
- [User Manual](#)