



# Donar Electronic BT1505 Foldable Bluetooth 5.1 Keyboard User Manual

[Home](#) » [Donar Electronic](#) » Donar Electronic BT1505 Foldable Bluetooth 5.1 Keyboard User Manual 

## DONAR

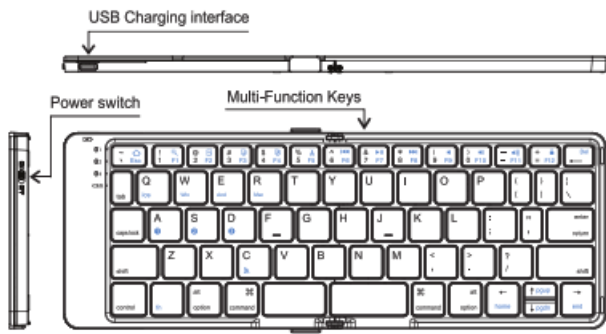
### Electronic BT1505 Foldable Bluetooth 5.1 Keyboard User Manual



#### Contents

- [1 BT1505 Foldable Bluetooth 5.1 Keyboard](#)
- [2 Compatible system](#)
- [3 Technical Specifications](#)
- [4 Product features](#)
- [5 iOS Connection instructions](#)
- [6 Mac Connection instructions](#)
- [7 Win 10 Connection instructions](#)
- [8 Android Connection instructions:](#)
- [9 Status Display LED](#)
- [10 Keyboard Maintenance](#)
- [11 FAQ](#)
- [12 Warranty Card](#)
- [13 Documents / Resources](#)
- [14 Related Posts](#)

**Note:** Please read the user manual carefully before you start using this product.



**Compatible system**

Windows/ios/Android/Mac

**Technical Specifications**

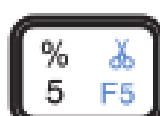
**Keyboard size.** 269.3×97.4×7.9mm (open) 142.7×97.4x16mm (folding)  
**Weight:** 165g  
**Standby current:** < 0.7mA Key  
working current: < 1.5mA Working  
**Sleep current:** 20 pA  
**Sleep time:** Ten minutes  
**distance:** 10m  
**Lithium battery capacity:** 80 mAh  
**Awaken way:** Pre.  
**key Input:** 5V/50-100mA

**Product features**

Fn+	iOS/Mac Android	Fn + shift	Windows	Fn+	Windows





lgtsr t°



izur 0





Esc

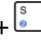
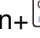
		 			
Search	Search	F1			
Select	Select	F2			
Copy	Copy	F3			
Stick	Stick	F4			
Cut	Cut	F5			
Pm:Slack	Pre,rack	F6			
Play/Pau.	Play/Pause	F7			
Next	Next	FS			
Mute	Mute	F9			
Volume-	Volume-	F10			
Volume+	Volume+	F11			
Lock	Lock	F			



Three system switching language:

- windows: Alt+Shift switch language
- K./Mac: Ctrl+Space key switch language.
- Android : Shift+Space key switch language.

### Multi-channel connection:

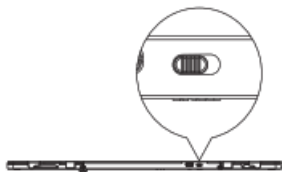
When connecting the first device, press Fn+, then press Fn+ to pair the code to start the connection.

When connecting the second device, pre. Fn+ then press Fn+ to pair the code to start the connection.

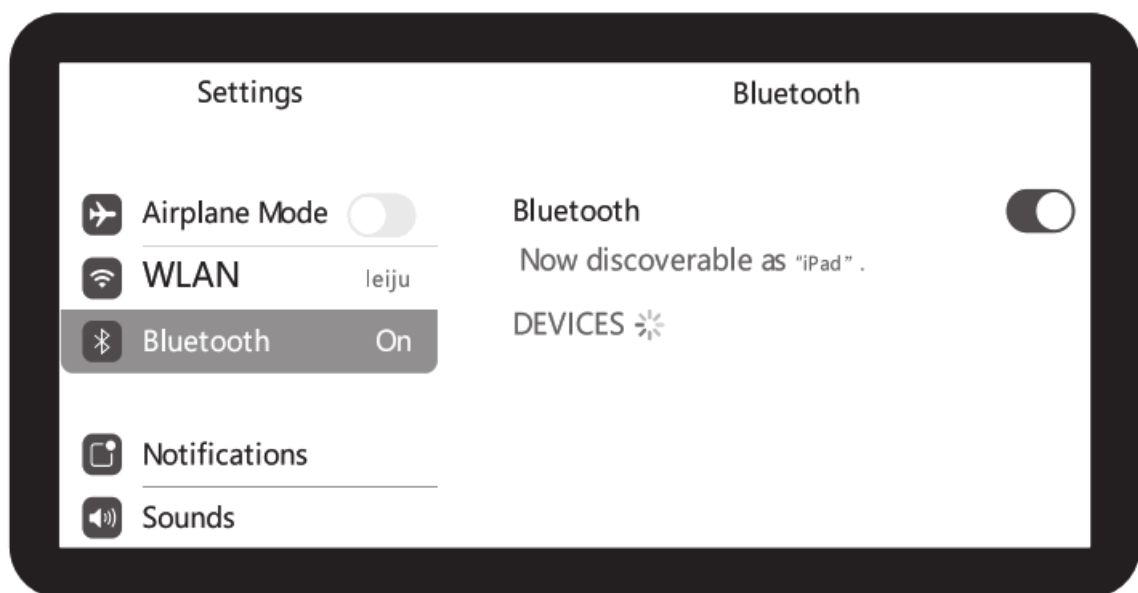
When connecting the third device, press Fn+, and then press Fn+ to pair the code to start the connection.

When using multiple devices at the same time, press Fn+   switch to the connected device freely.

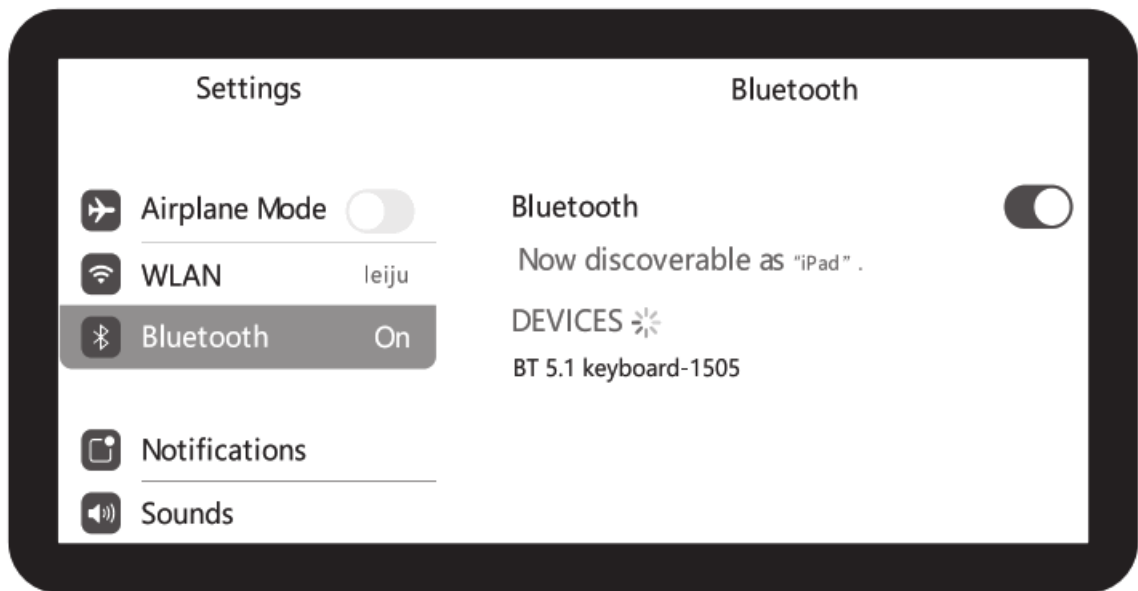
### iOS Connection instructions



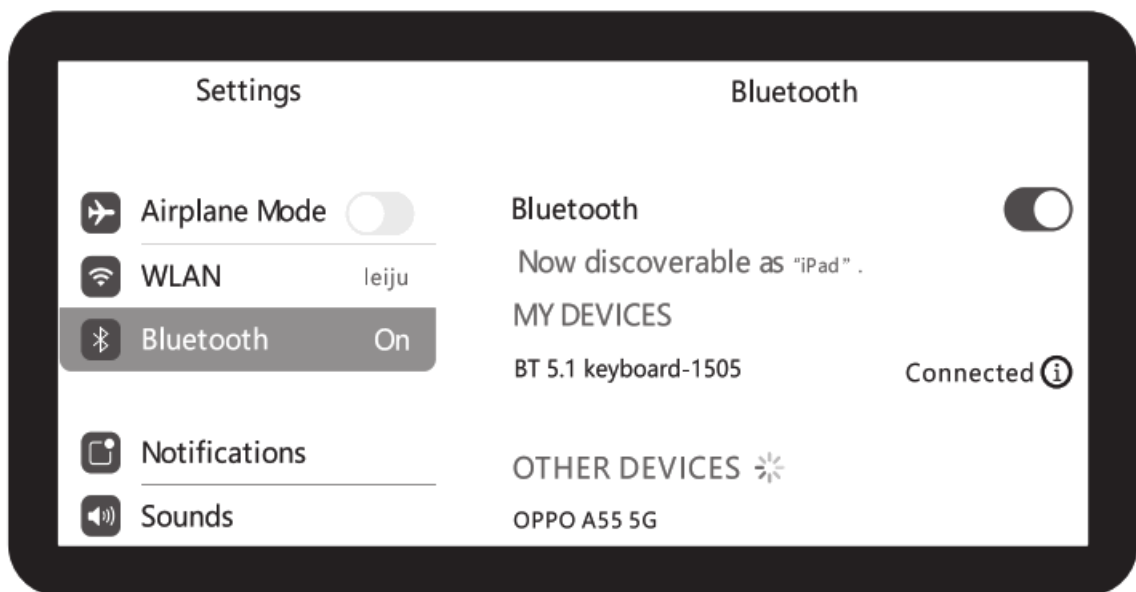
1. Slide the keyboard on/off switch to on, select the bluetooth model when green light is visible. Then press Fn+C, start to pair when the blue light is flashing.



2. Open the set up button at starting interface and select "Bluetooth", then searching.

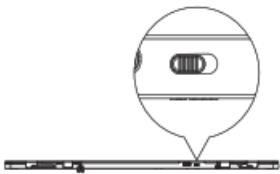


3. You will find the\* BT 5.1 keyboard-1505",and click the pairing name t o connect .



4. There is a tip for connecting successfully , you can use your keyboard comfortably.

## Mac Connection instructions



1. Slide the keyboard on/off switch to on, select the bluetooth model when green light is visible. Then press Fn+C, start to pair when the blue light is flashing.



2. Open the Mac System Preferences and select "Bluetooth", then searching.

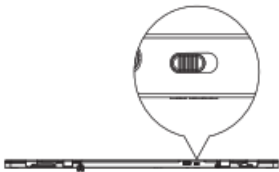


3. You will find the "BT 5.1 keyboard-1505", and click the pairing name to connect.

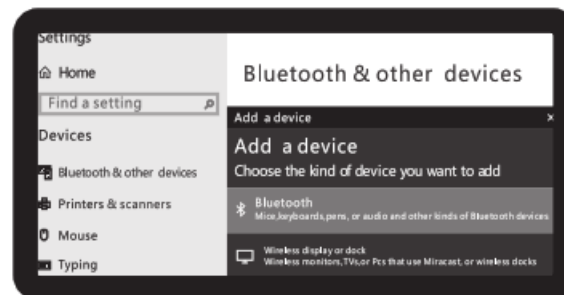


4. There is a tip for connecting successfully, you can use your keyboard comfortably.

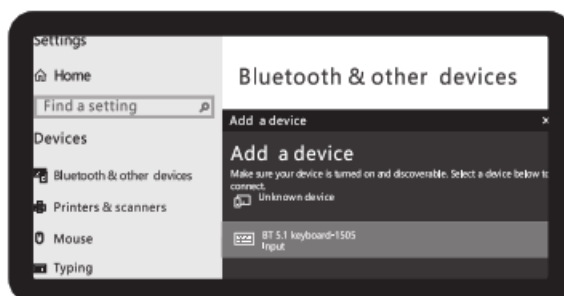
## Win 10 Connection instructions



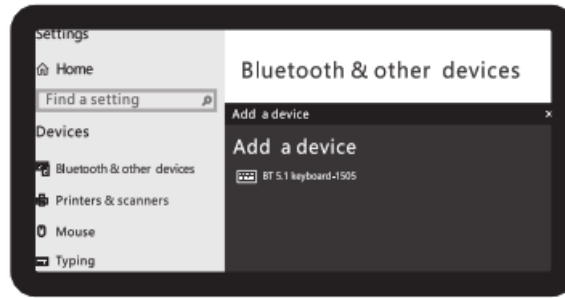
1. Slide the keyboard on/off switch to on, select the bluetooth model when green light is visible. Then press Fn+C, start to pair when the blue light is flashing.



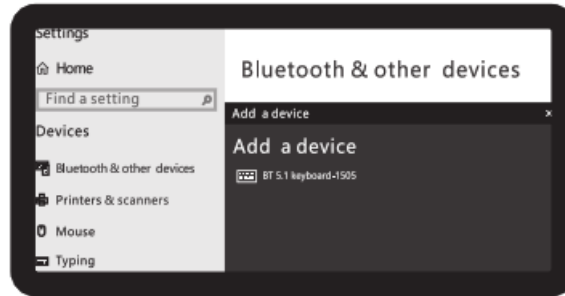
2. Open settings, turn on Bluetooth, click Add Bluetooth or other devices.



3. Select "Bluetooth" in the Add Device to search.

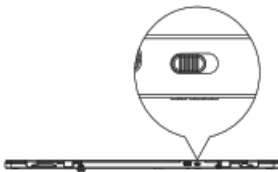


4. You will find the" BT 5.1 keyboard-1505",and click the pairing name to connect.

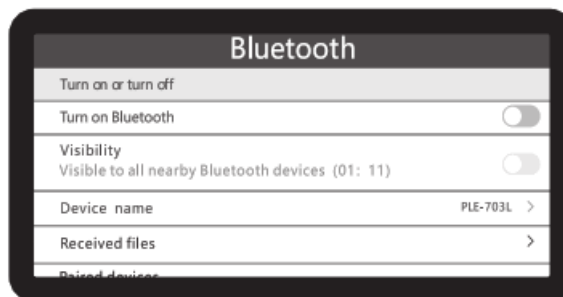


5. There is a tip for connecting successfully , you can use your keyboard comfortably .

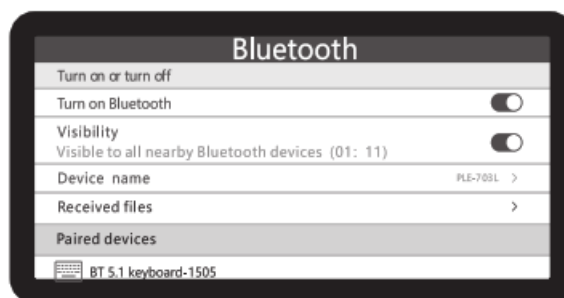
### Android Connection instructions:



1. Slide the keyboard on/off switch to on, select the bluetooth model when green light is visible. Then press Fn+C, start to pair when the blue light is flashing.

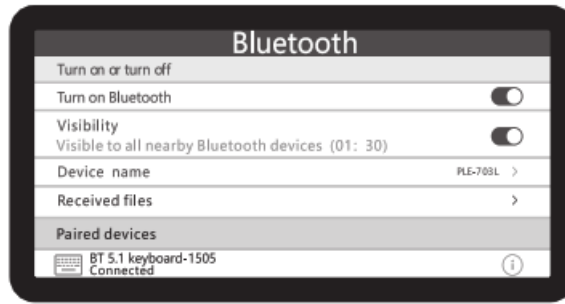


2. Open the tablet PC setting" Bluetooth" into searching and pairing status.



3. You will find the" BT 5.1 keyboard-1505",and click to fie. step.





There is a tip for connecting successfully, you can use your keyboard comfortably .

**Remarks :** After connecting successfully the next time you don't need match code, just open the Bluetooth keyboard power switch and the tablet PC " Bluetooth ." The BT keyboard will search the device and automatic connects.

## Status Display LED

**Power:** Slide the keyboard on/off switch to on, the green is visible for seconds.

**Bluetooth :** Choose the mode, the blue light is visible for seconds.

**Pairing :** Press Fn+C, Blue light flash. When connected, the lights turns off

**Low-Battery :** Red light flash Charging : Red light on. When fully charged, the light turns off.

**Capslock :** Green light on

## Keyboard Maintenance

1. Please keep the keyboard away from liquid or humid environment,saunas,swim-ming pool,steam room and don't let the keyboard get wet in the rain.
2. Please don't expose the keyboard at too high or too low temperature condition.
3. Please don't put keyboard under sun for a long time.
4. Please don't put keyboard dose to the flame,such as cooking stoves,candles or fireplace.
5. Avoid sharp objects scratching products,timely to recharge products to ensure the normal use.

## FAQ

### The tablet PC can't connect the BT keyboard?

- At first check the BT keyboard is into match code state,then open the table PC Bluetooth searching.
- Checking the BT keyboard Battery is enough,the battery low is also lead to can't connect,you need charge.

### The keyboard indication light always flashing when use?

- Keyboard indication always flashing when use, is means the keyboard will be no power , please charge the power as soon as possible.

### The table PC display BT keyboard is disconnect?

- The Bluetooth keyboard is not used for a period of time,the device will, automatically enter the sleep state in order to save power Press any key on the keyboard to wake up,and the Bluetooth connection will be automatically restored.

## FCC Statement

This device complies with part 15 of the FCC rules. Operation is subject to the following two conditions:

1. this device may not cause harmful interference, and
2. this device must accept any interference received, including interference that may cause undesired operation.

Changes or modifications not expressly approved by the party responsible for compliance could void the user's authority to operate the equipment.

**NOTE:** This equipment has been tested and found to comply with the limits for a Class B digital device, pursuant to part 15 of the FCC Rules. These limits are designed to provide reasonable protection against harmful interference in a residential installation. This equipment generates uses and can radiate radio frequency energy and, if not installed and used in accordance with the instructions, may cause harmful interference to radio communications. However, there is no guarantee that interference will not occur in a particular installation. If this equipment does cause harmful interference to radio or television reception, which can be determined by turning the equipment off and on, the user is encouraged to try to correct the interference by one or more of the following measures:

- Reorient or relocate the receiving antenna.
- Increase the separation between the equipment and receiver
- Connect the equipment into an outlet on a circuit different from that to which the receiver is connected.
- Consult the dealer or an experienced radio/TV technician for help.

The device has been evaluated to meet general RF exposure requirement. The device can be used in portable exposure condition without restriction.

## Warranty Card

### User information

Company or personage full name

Contact.....

address.....

TEL.....

Zip.....

The purchased product name and model NO.

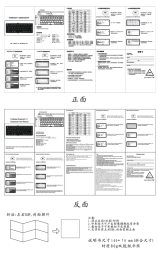
Purchased date.....

This reason due t o the product broken and damage is not include on the warranty .

1. Accident , misuse , improper operation , or any unauthorized repair modified or removed.
2. Improper operation or maintenance, when operation violation o f the instructions or connectionun suitability power supply.
3. Or use consumables ( such as spare batteries ) that are not provided by the company, but applicable laws  
Except where such restrictions are prohibited

# DONAR



	<p><a href="#">Donar Electronic BT1505 Foldable Bluetooth 5.1 Keyboard</a> [pdf] User Manual BT-1505, BT1505, 2A5ZGBT-1505, 2A5ZGBT1505, BT1505 Foldable Bluetooth 5.1 Keyboard, Foldable Bluetooth 5.1 Keyboard, Bluetooth 5.1 Keyboard, Keyboard</p>
---	--