


# DOMUS CHAM-TOUCH-3C 3 Channel Wall Controller Instruction Manual

[Home](#) » [DOMUS](#) » DOMUS CHAM-TOUCH-3C 3 Channel Wall Controller Instruction Manual 

## Contents

- [1 DOMUS CHAM-TOUCH-3C 3 Channel Wall Controller](#)
- [2 Product Information](#)
- [3 Product Usage Instructions](#)
- [4 Specifications](#)
- [5 Function Introduction](#)
- [6 Wiring Diagram](#)
- [7 Operation](#)
- [8 Contact](#)
- [9 Documents / Resources](#)
  - [9.1 References](#)
- [10 Related Posts](#)



**DOMUS CHAM-TOUCH-3C 3 Channel Wall Controller**



## Product Information

- **Product Name:** CHAM-TOUCH-3C Wall Controller
- **Item Number:** 20144
- **Type of Controller:** RGBW touch wall control
- **Output Signal:** RF + Bluetooth
- **Dimming Range:** 0.1% – 100%
- **Colour:** White (Glass)
- **Dimensions (mm):** (L) 120 x (W) 75 x (D) 29.1
- **Cutout (mm):** 19.4
- **Transmission Frequency:** Not specified
- **Operating Temperature:** Not specified
- **Power Consumption:** Not specified
- **Operation Voltage:** Not specified

## Product Usage Instructions

### 1. Installation:

- The lamp must be installed by a professional electrician.
- Ensure the power supply is switched off before fitting this product.
- Keep away from hot steam and corrosive gas.

## 2. Function Introduction:

- Red channel:
  - Click to turn off/on.
  - Press and hold down to increase/decrease light intensity.
- Blue channel:
  - Click to turn off/on.
  - Press and hold down to increase/decrease light intensity.
  - Click to select Warm White, Natural White, and Cool White mixed by RGB colors.
  - Press and hold down to increase/decrease light intensity.
- Green channel:
  - Click to turn off/on.
  - Press and hold down to increase/decrease light intensity.
- White channel:
  - Click to turn off/on.
  - Press and hold down to increase/decrease light intensity.
  - Click to switch on/off.
  - Click to play/pause the 10 built-in effects.
  - Press and hold down to speed up/down the running effects.
  - Press and hold down to save color/effect.
  - Click to recall the saved color/effect.

## 3. Operation:

- Do wiring the wall panel & RF+Bluetooth receiver according to the wiring diagram provided.
- Power on, then touch the button to turn on the controller. The indicator of the controller will turn blue.

## 4. Pairing with RF+Bluetooth Receiver:

- Click the Prog. Key on the RF+Bluetooth receiver (or reset power of the receiver 3 times continuously if the button is not accessible) to set it into pairing to RF+Bluetooth remote status.

**Variant**      **Item No.**      **Detail**

20144	CHAM-TOUCH-3C	3CH Wall Controller
-------	---------------	---------------------

Thank you for purchasing your new CHAM-TOUCH-3C Wall Controller, Please take the time to read and understand the instruction sheet below. Failure to do so may void warranty.

## Specifications

Type of controller:	RGBW touch wall control	Cutout (mm):	(L) 70mm x (W) 44mm x (D) 20mm
Output signal:	RF + Bluetooth	Transmission frequency:	2.4GHz
Dimming range:	0.1% – 100%	Operating temperature:	0-40°C
Colour:	White (Glass)	Power consumption:	< 15mA
Dimensions (mm):	(L) 120mm x (W) 75mm x (D) 29.1mm	Operation voltage:	240V

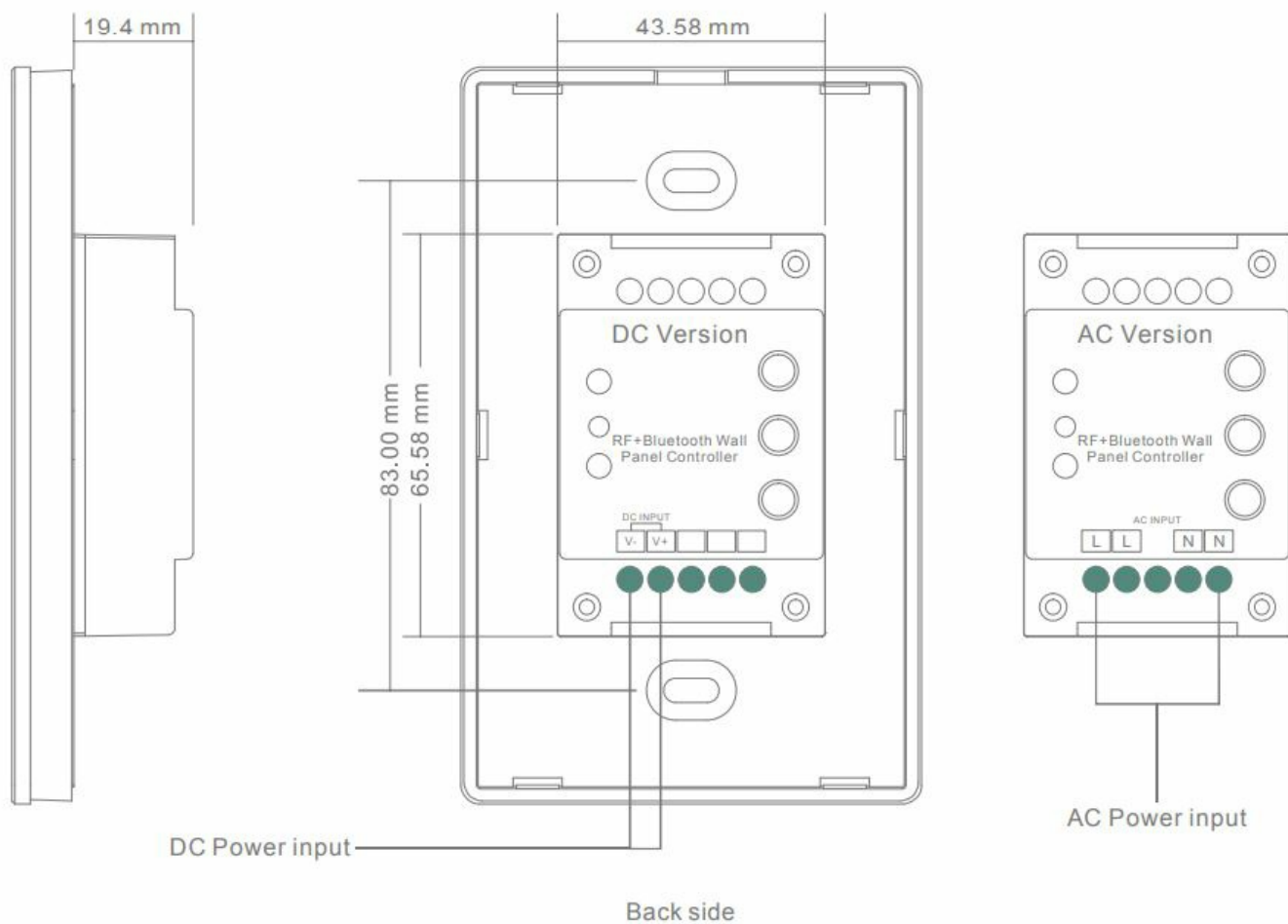
- Touch sensitive
- Glass interface(white & black)
- Compatible with all universal series RF+Bluetooth receivers
- **Radio frequency:** 2.4GHz
- Control RGBW colour
- Control 1 zone/area
- **Waterproof grade:** IP20

### Safety & Warnings

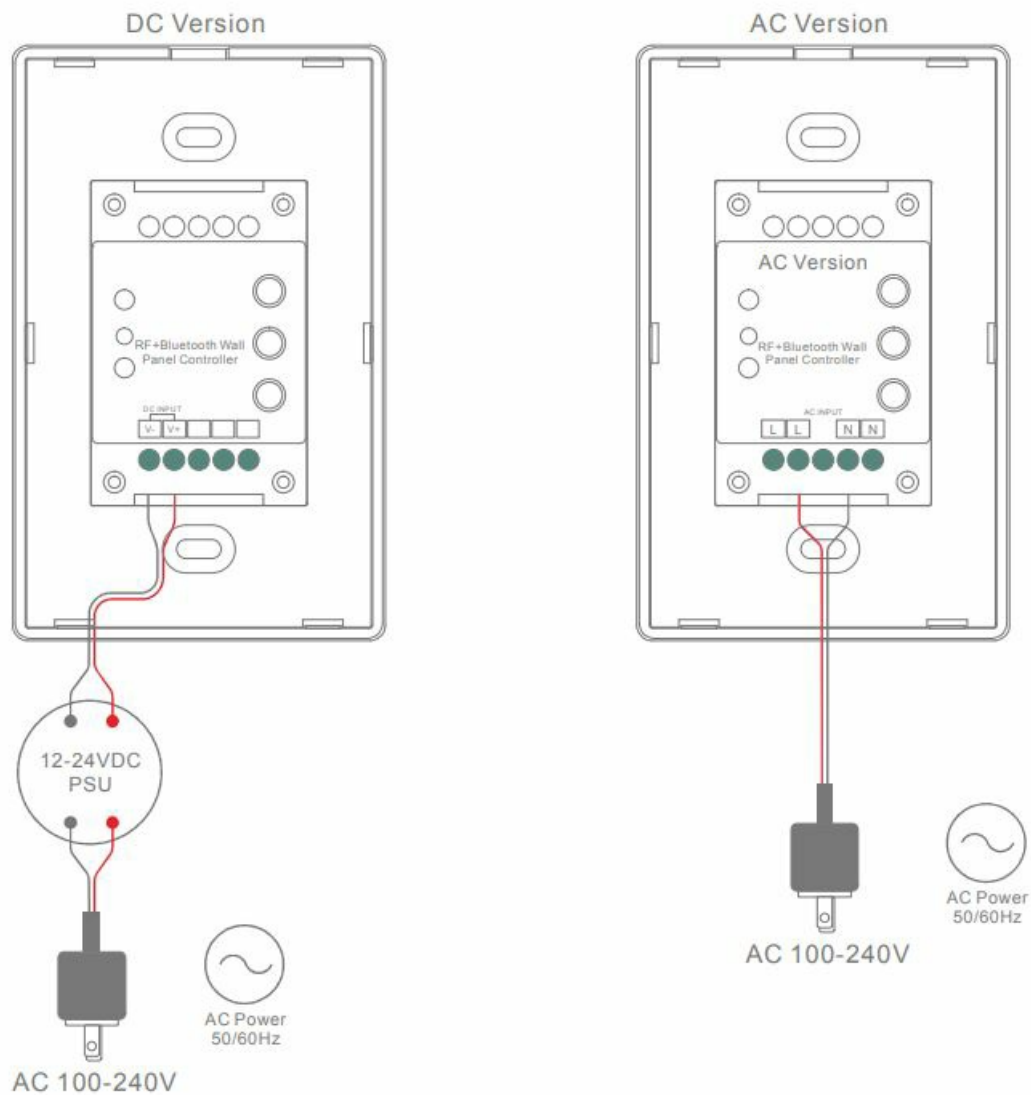
- DO NOT install with power applied to device.
- DO NOT expose the device to moisture.

### Function Introduction





## Wiring Diagram



## Operation

1. Do wiring the wall panel & RF+Bluetooth receiver according to wiring diagram (please refer to the instruction of RF+Bluetooth receiver that you would like to pair with).
2. Power on, then touch the button to turn on the controller, indicator of the controller turned blue.

## Pair with RF+Bluetooth receiver



**Step 1:** Click the "Prog. Key" on RF+Bluetooth receiver (or reset power of the receiver 3 times continuously if the button is not accessible) to set it into pairing to RF+Bluetooth remote status.

**Step 2:** Touch the colour wheel, LED lights connected with the RF+Bluetooth receiver flicker once means the receiver is paired with the wall panel successfully.

### Built-in 10 colour changing modes are as follows:

Mode 1:	Any two colours of RGB mix fade-in & fade-out
Mode 2:	RGB three colours mix fade-in & fade-out
Mode 3:	RGB three colours mix fade-out & fade-in
Mode 4:	RGB flash
Mode 5:	RGB three colours fade-in & fade-out successively
Mode 6:	RGB three colours fade-in successively
Mode 7:	RGB three colours fade-out successively
Mode 8:	RGB three colours jump changing successively
Mode 9:	R&B two colours mix fade (R in B out), then G fade-in, then R&B mix fade (R out B in), then G fade-out
Mode 10:	B fade-out, then G&B mix fade (G out B in), then R&G mix fade (R out G in), then R fade-in


### Note

- The lamp must be installed by professional electrician
- Ensure the power supply is switched off before fitting this product
- Do not touch the lamp when in use
- Keep away from hot steam and corrosive gas

### Contact

- 29-31 Richland St. Kingsgrove. Sydney NSW 2208 Australia
- **Phone:** 02 9554 9600
- **Fax:** 02 9554 9433
- [enquiries@domuslighting.com.au](mailto:enquiries@domuslighting.com.au)
- [www.domuslighting.com.au](http://www.domuslighting.com.au)

### Documents / Resources

	<p><a href="#">DOMUS CHAM-TOUCH-3C 3 Channel Wall Controller</a> [pdf] Instruction Manual</p> <p>20144, CHAM-TOUCH-3C 3 Channel Wall Controller, CHAM-TOUCH-3C, 3 Channel Wall Controller, Wall Controller, Controller</p>
--	--

References