

# DOMUS LINE RC3 Remote Controller Instruction Manual

[Home](#) » [DOMUS LINE](#) » DOMUS LINE RC3 Remote Controller Instruction Manual 



## Contents

- [1 DOMUS LINE RC3 Remote Controller Instruction Manual](#)
- [2 Inserting – replacing batteries](#)
- [3 Setting DIMMER mode operation](#)
- [4 Configuring with CALL-ME V17 receiver](#)
- [5 Configuration with X-DRIVER](#)
- [6 Setting TW mode operation](#)
- [7 Configuring the MAGIC TUNE receiver](#)
- [8 Configuring with TW X-DRIVER](#)
- [9 Documents / Resources](#)
  - [9.1 References](#)
- [10 Related Posts](#)

## DOMUS LINE RC3 Remote Controller Instruction Manual

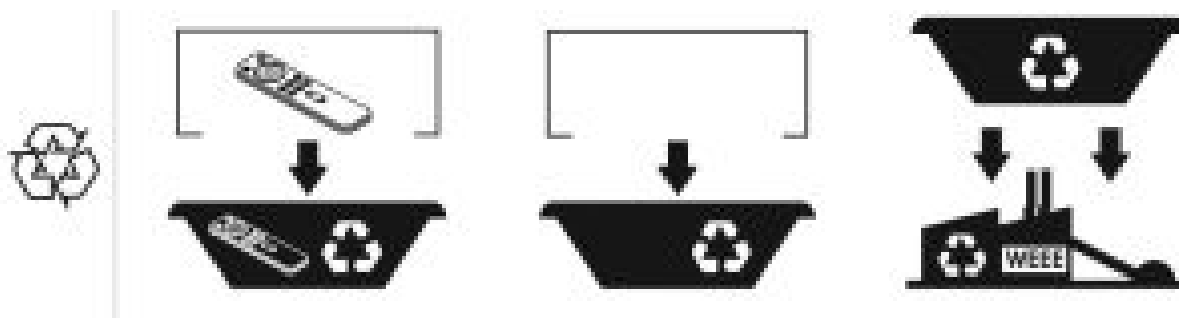
[DOMUS LINE RC3 Remote Controller](#)



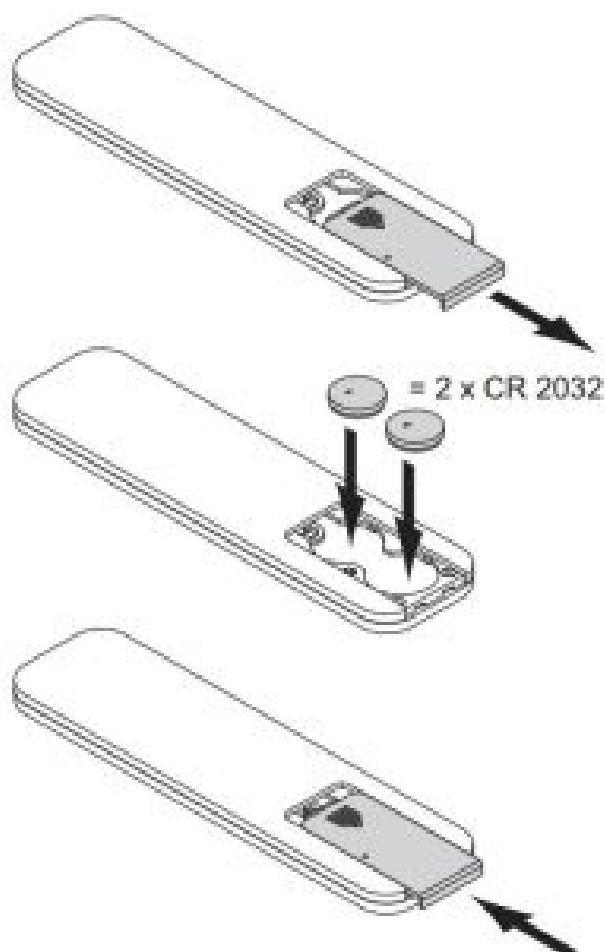
phone: 0039 0434 595911  
fax: 0039 0434 923345  
e-mail: [info@domusline.com](mailto:info@domusline.com)  
website: [www.domusline.com](http://www.domusline.com)



The product must be disposed of separately from urban waste, delivering it to the collection centres established by the prevailing standard. Adequate sorted waste collection contributes to preventing negative effects on the environment and health and favours reuse and/or recycling materials. Incorrect disposal of the product implies the application of the administrative sanctions envisaged by the prevailing regulation.

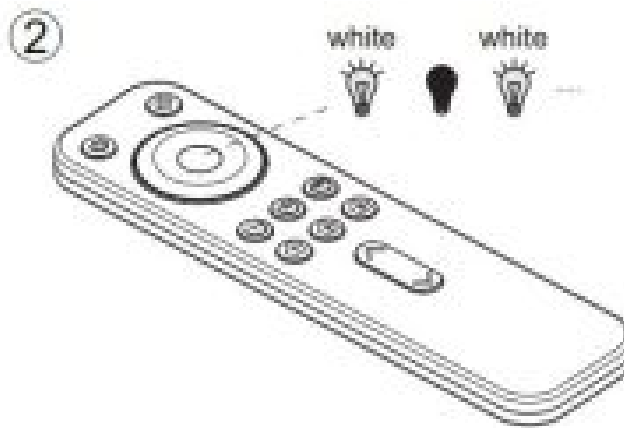
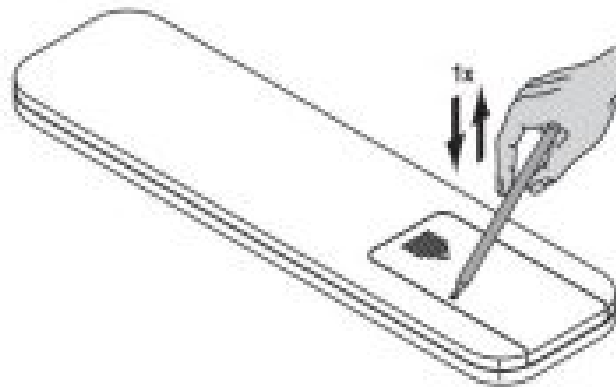


### Inserting – replacing batteries

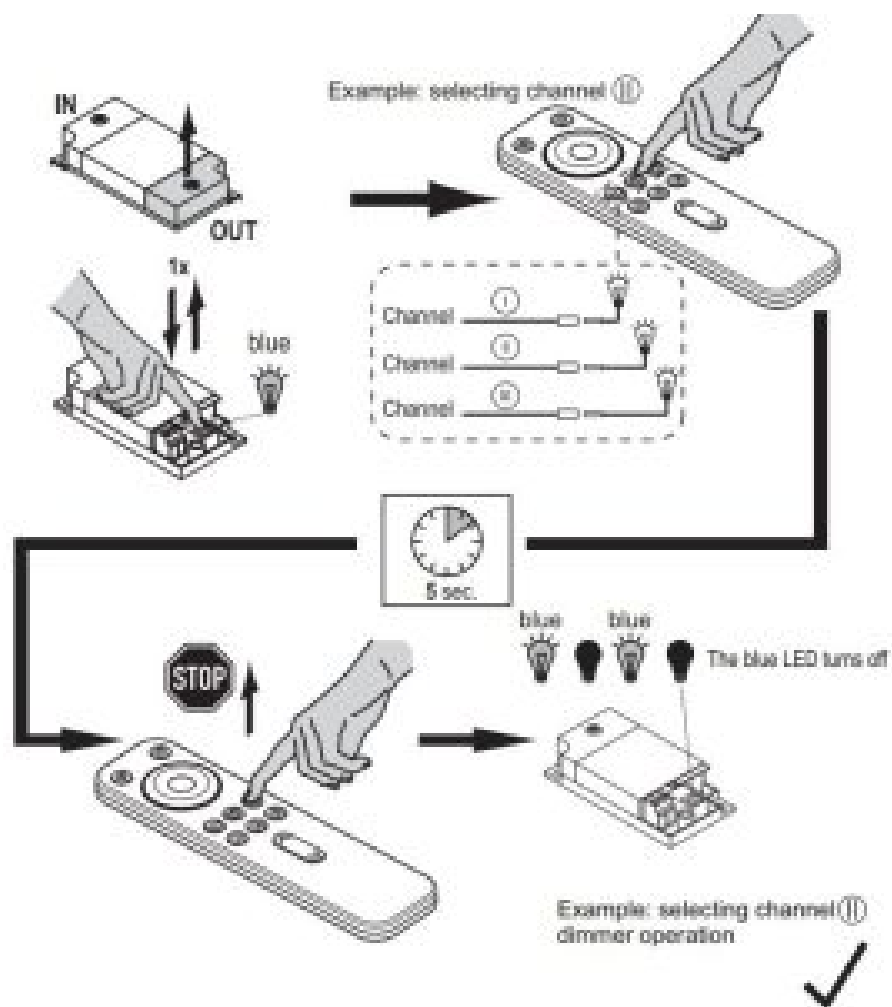


### Setting DIMMER mode operation

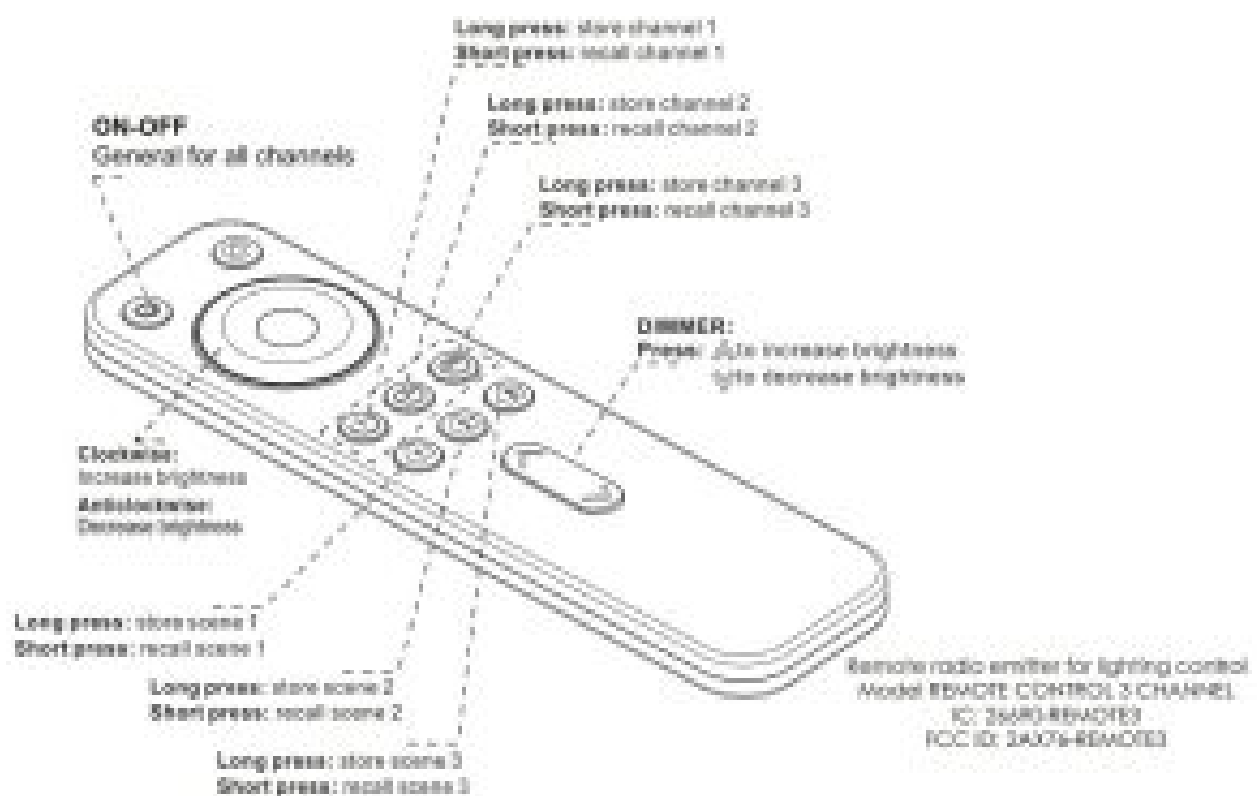
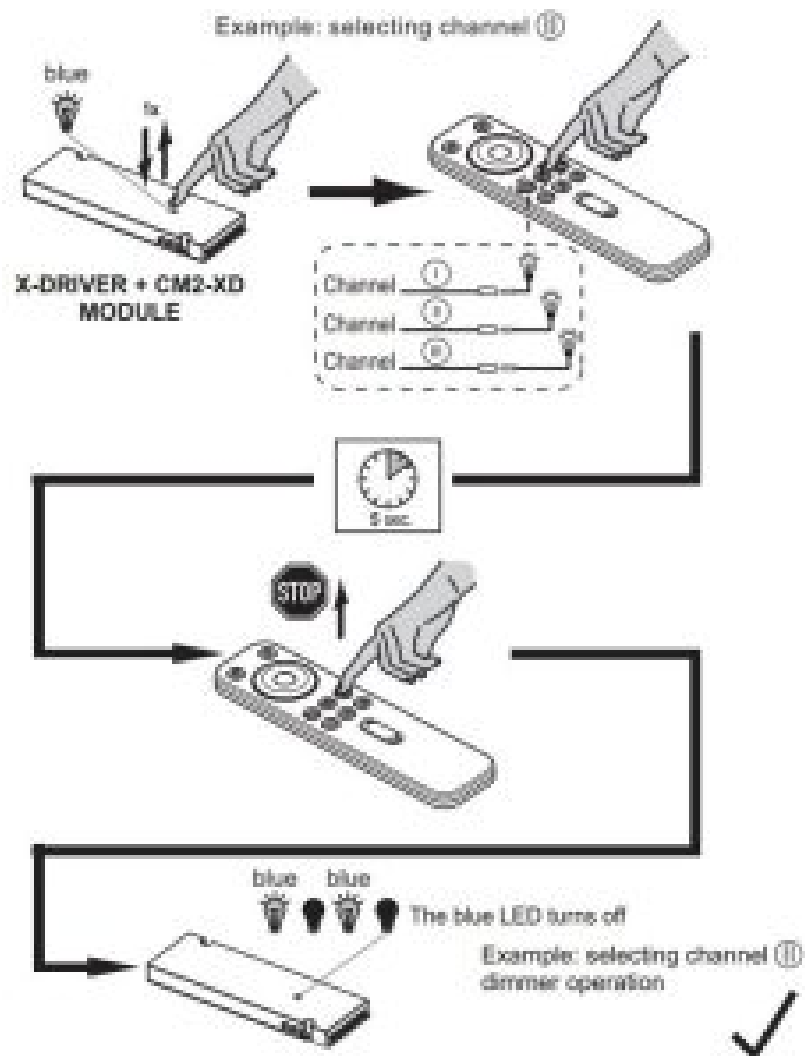
- ① If the channel has already been set to TW or RGB mode, follow steps 1 and 2. If this is the first time that this channel has been used, or it has previously been set to dimmer mode, skip steps 1 and 2.



**Configuring with CALL-ME V17 receiver**

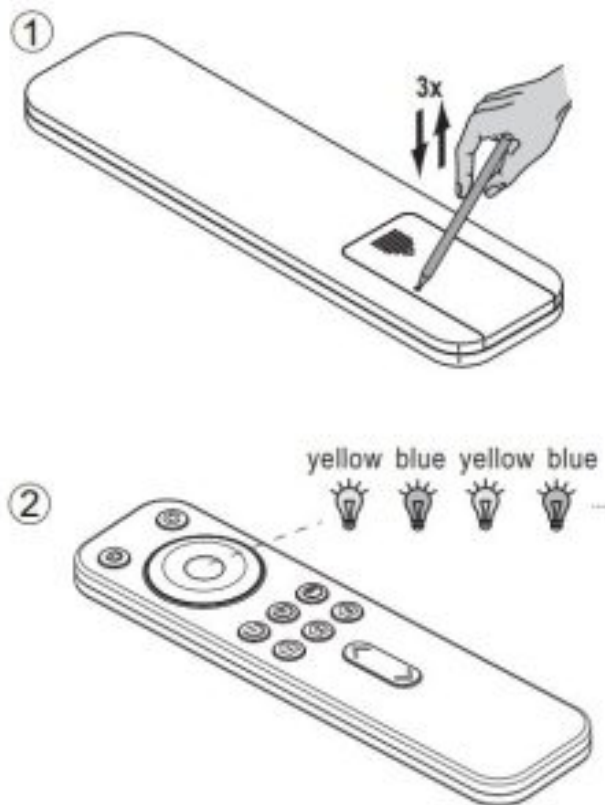


Configuration with X-DRIVER



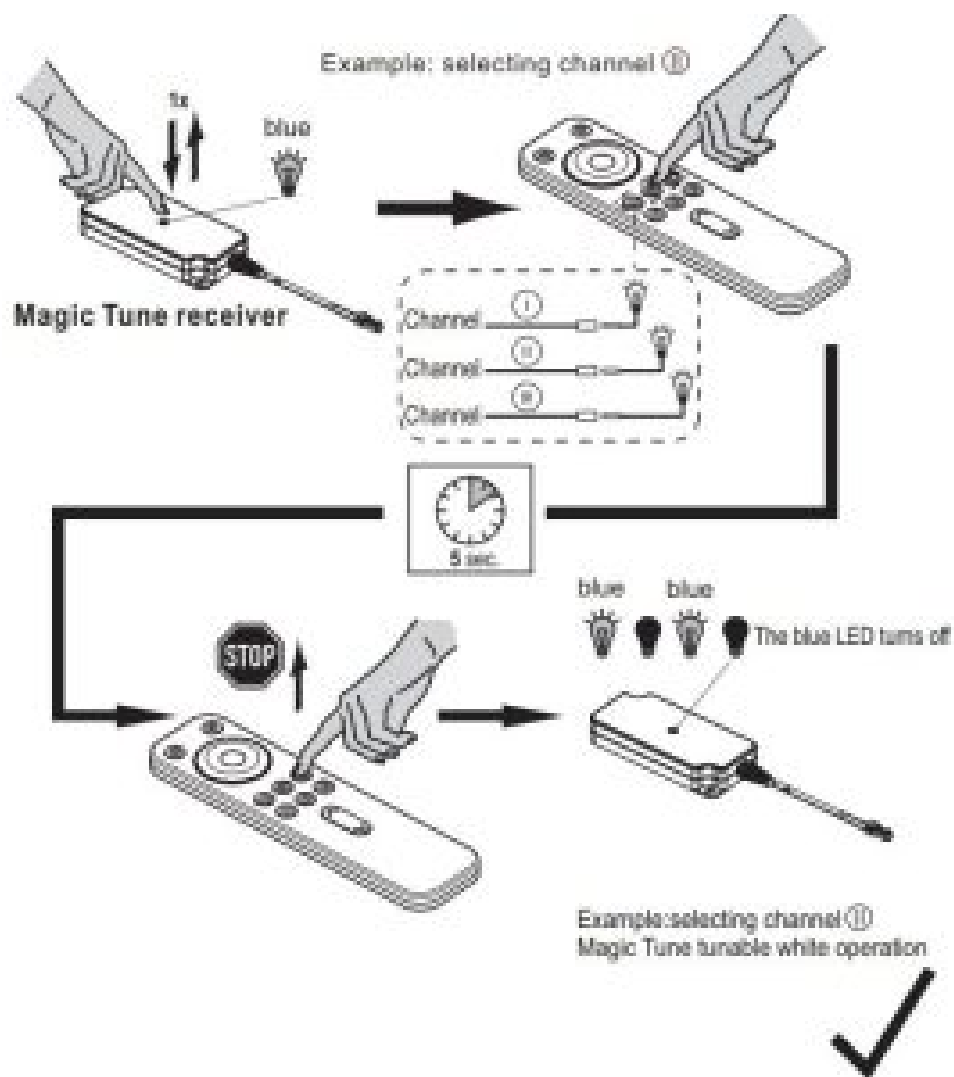
## Setting TW mode operation

If the channel has already been set to dimmer / RGB mode, follow steps 1 and 2. If it has already been set in the TW channel, skip steps 1 and 2.



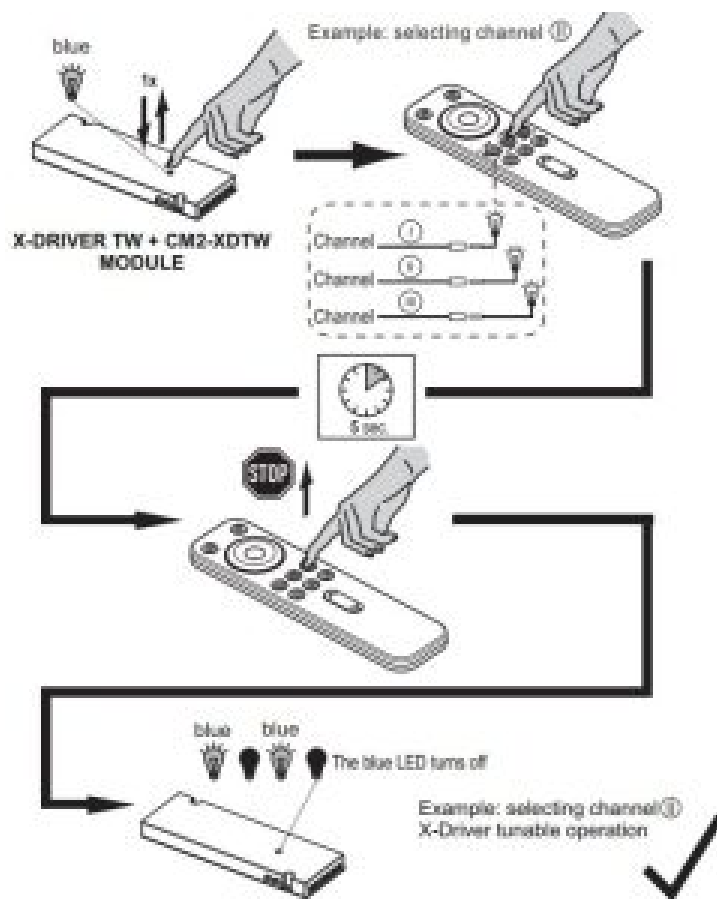


## Configuring the MAGIC TUNE receiver



Configuring with TW X-DRIVER





This device complies with part 15 of the FCC Rules. Operation is subject to the following two conditions: (1) This device may not cause harmful interference, and (2) this device must accept any interference received, including interference that may cause undesired operation.

#### **FCC warning:**

Any Changes or modifications not expressly approved by the party responsible for compliance could void the user's authority to operate the equipment.

**Note:** This equipment has been tested and found to comply with the limits for a Class B digital device, pursuant to part 15 of the FCC Rules.

These limits are designed to provide reasonable protection against harmful interference in a residential installation. This equipment generates uses and can radiate radio frequency energy and, if not installed and used in accordance with the instructions, may cause harmful interference to radio communications. However, there is no guarantee that interference will not occur in a particular installation. If this equipment does cause harmful interference to radio or television reception, which can be determined by turning the equipment off and on, the user is encouraged to try to correct the interference by one or more of the following measures:

- Reorient or relocate the receiving antenna.
- Increase the separation between the equipment and receiver.
- Connect the equipment into an outlet on a circuit different from that to which the receiver is connected.
- Consult the dealer or an experienced radio/TV technician for help.

#### **IC warning**



This device complies with Industry Canada licence-exempt RSS standard(s).

Operation is subject to the following two conditions: (1) This device may not cause interference, and (2) This

device must accept any interference, including interference that may cause undesired operation of the device.

The device has been evaluated to meet general RF exposure requirement. The device can be used in portable exposure condition without restriction

Documents / Resources

	<a href="#">DOMUS LINE RC3 Remote Controller</a> [pdf] Instruction Manual RC3, Remote Controller, RC3 Remote Controller
	<a href="#">DOMUS LINE RC3 Remote Controller</a> [pdf] Instruction Manual REMOTE3, 2AX76-REMOTE3, 2AX76REMOTE3, RC3 Remote Controller, RC3, Remote Contr oller

References

Manuals+.